

Daily market
Report
05 Oct 23



Parity Movements (implied price moves)

USA Movement (Overnight)	Cents	Currencies	05-Oct-23	07:48:52
(DEC23)	486.00	-1.50 R/\$ last	19.2953	0.0179
(NOV23)	1,271.25	-10.25 Euro=	1.0519	0.0023
W1 CBOT (Dec23)	563.75	3.75 GOLD	1,827	6.4956
W1 KCBT (Dec23)	670.00	-7.25 BRENT	86.34	-3.66
BlackSea Weat (Dec23)	249.25	0.00		
Index Change				
Maize (Dec23)	3,692	R -7.96	Wheat CBOT (Dec123)	3,997 R30.27
Soya (Dec23)	9,012	R -64.24	Wheat Kansas (Dec23)	4,750 R -46.95
BlackSea Weat Near	4,809	R 4.46	Rand Effect on WEAT Parity*	R 4.68

* Average based on Prev. Spot FOB - US, Baltic and Australian Wheat.

USA Corn

Dec23 Daily: Contract status bearish < \$5.05

- Corn lost more ground as prices of corn & soybeans came under pressure from advancing US harvest and ample global supplies; US weather is forecast to be favourable for the corn and soybean harvest in the coming weeks – Reuters News

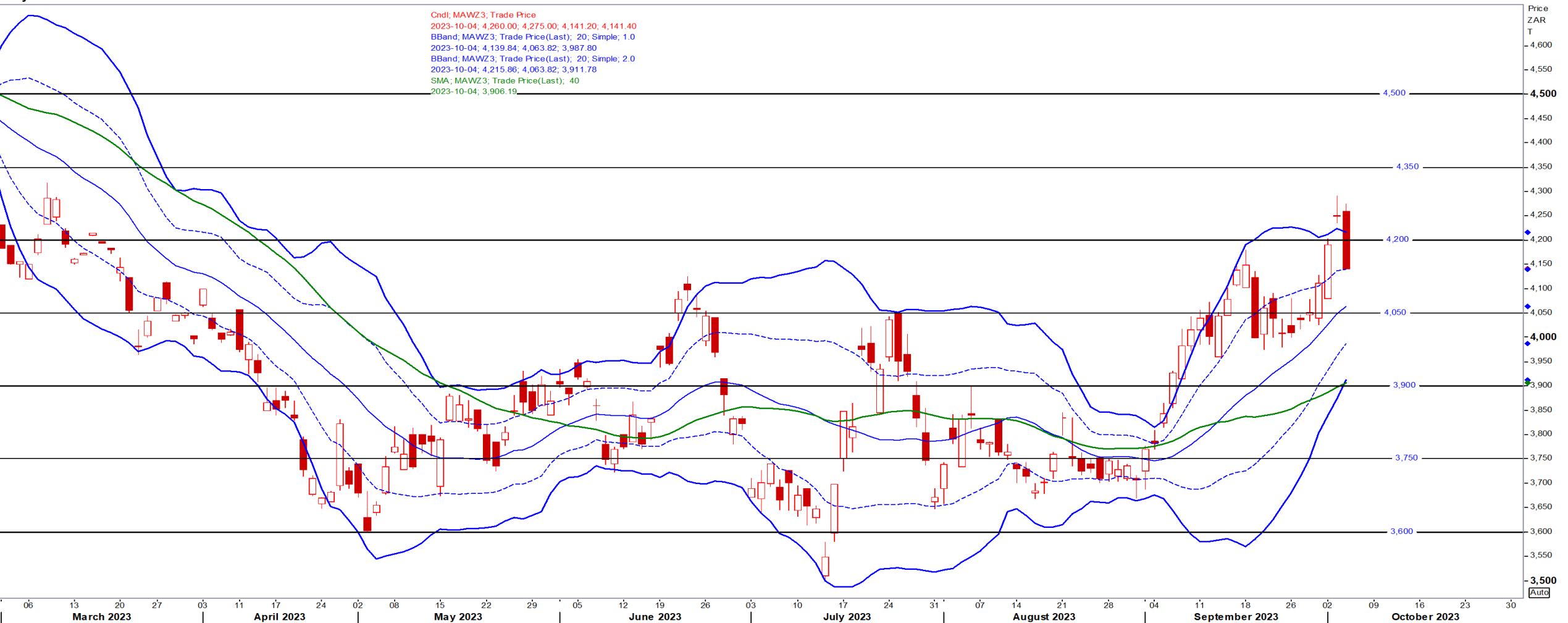


White Maize

Dec23 Daily: Contract status bullish > R4050

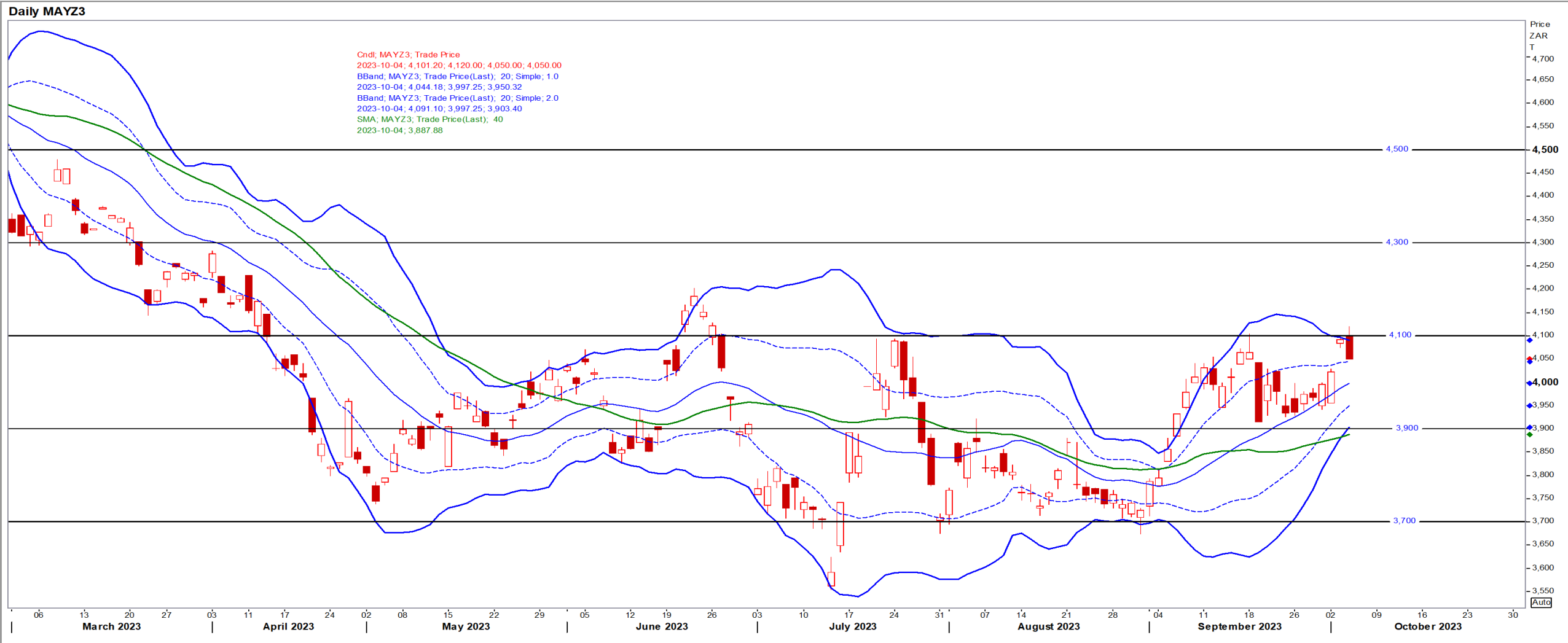
Daily MAWZ3

Cndt; MAWZ3; Trade Price
2023-10-04; 4,260.00; 4,275.00; 4,141.20; 4,141.40
BBand; MAWZ3; Trade Price(Last); 20; Simple; 1.0
2023-10-04; 4,139.84; 4,063.82; 3,987.80
BBand; MAWZ3; Trade Price(Last); 20; Simple; 2.0
2023-10-04; 4,215.86; 4,063.82; 3,911.78
SMA; MAWZ3; Trade Price(Last); 40
2023-10-04; 3,906.19



Yellow Maize

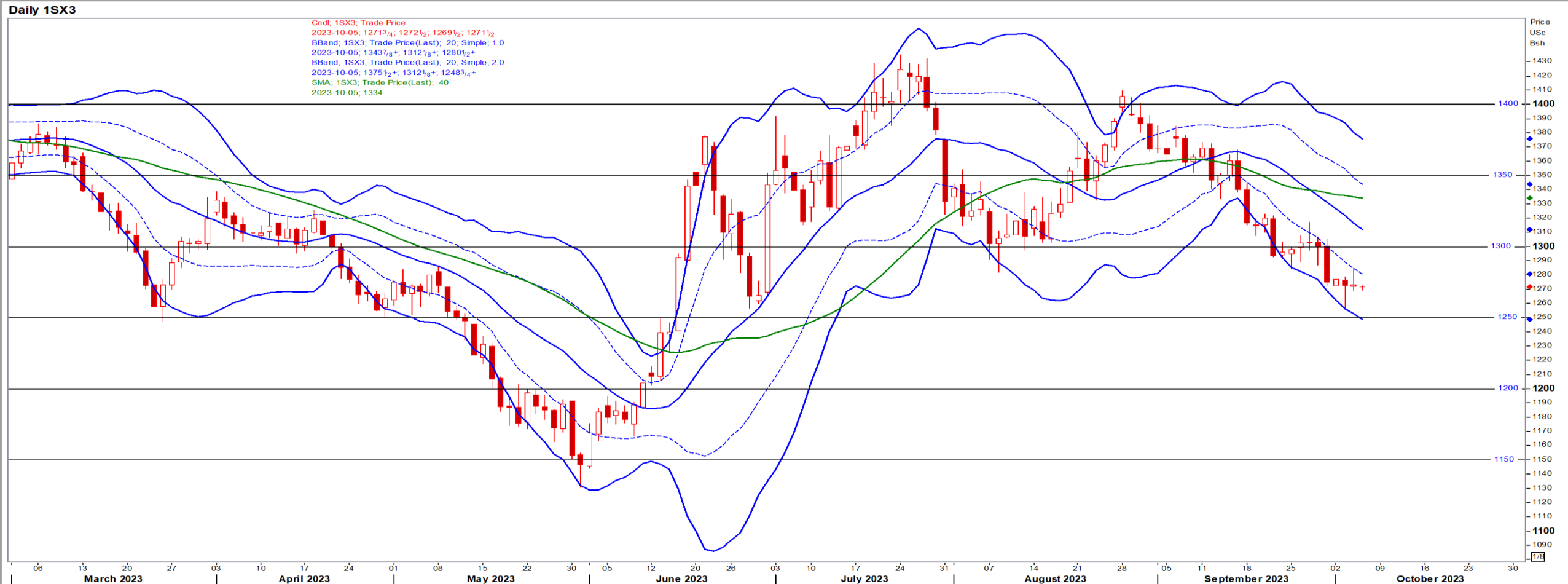
Dec23 Daily: Contract status bullish > R4000



USA Soya

Nov23 Daily: Contract status bearish < \$13.00

- Decline in the USD from recent highs, along with a recent report of purchases from China lent some support to soybean prices, but ample global supplies have capped gains following a steep selloff Friday – Reuters News



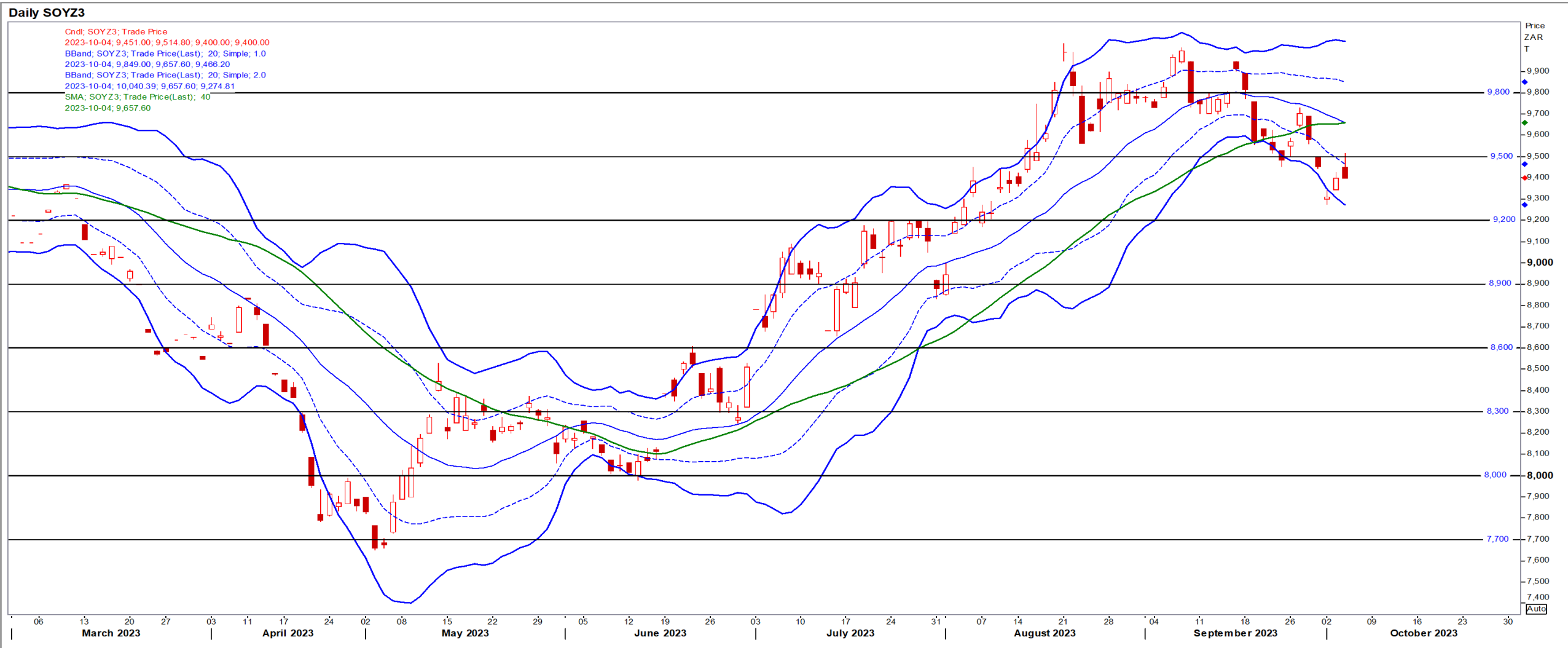
Suns

Dec23 Daily: Contract status bullish > R9100



SA Soya

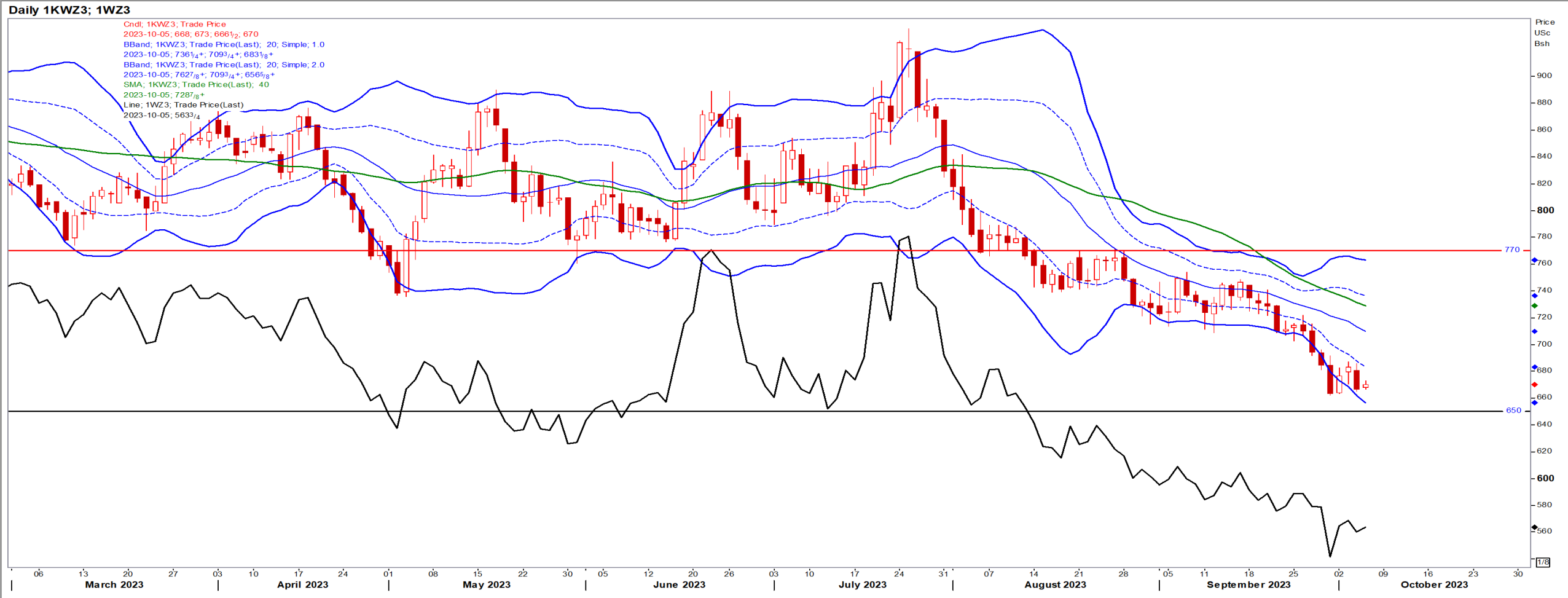
Dec23 Daily: Contract status bearish < R9650



USA Wheat (Kansas red; CBOT black)

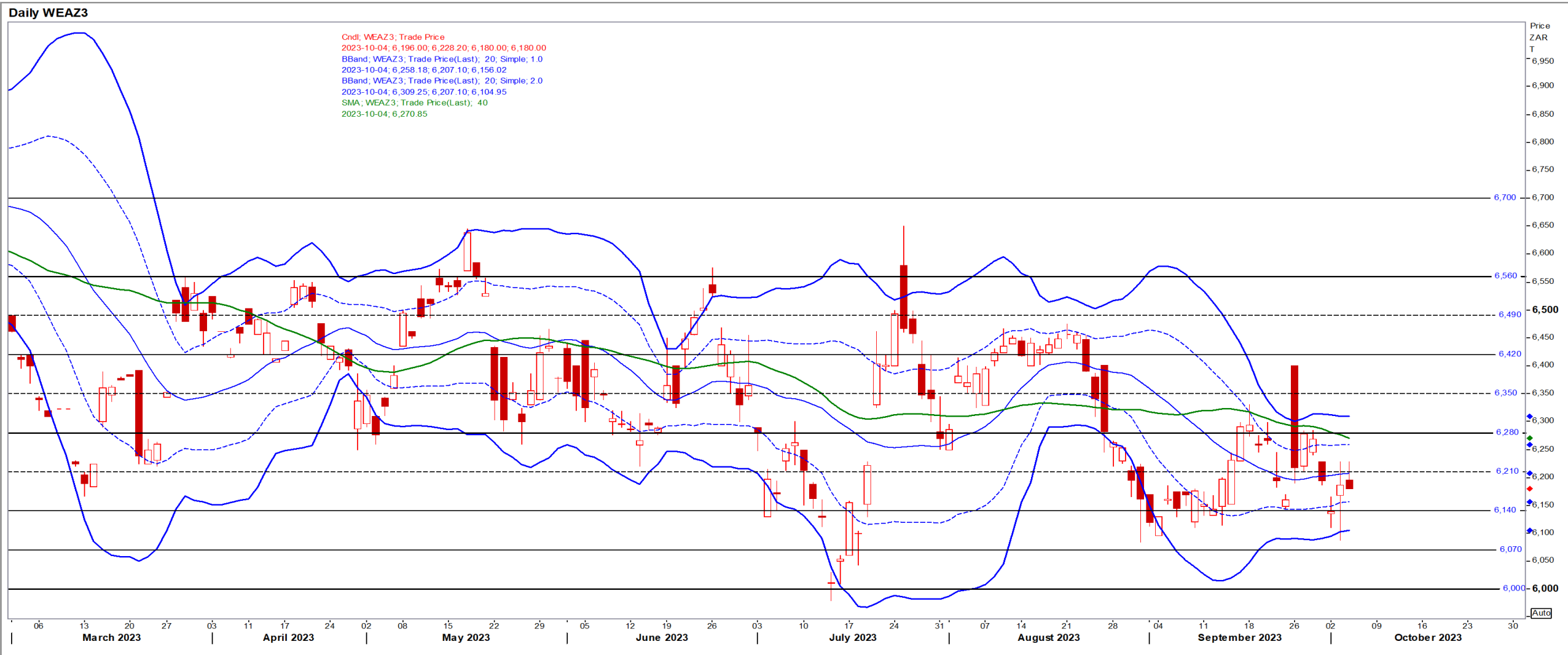
Dec23 Daily: Contract status bearish < \$7.70

- Soft red winter wheat declined 1.5% to end \$5.60, pushed lower by profit-taking; demand remains a real problem in the market, but is expect to improve as South American supplies dwindle and the US moves into the winter months – Reuters News



SA Wheat

Dec23 Daily: Contract status bearish < R6280



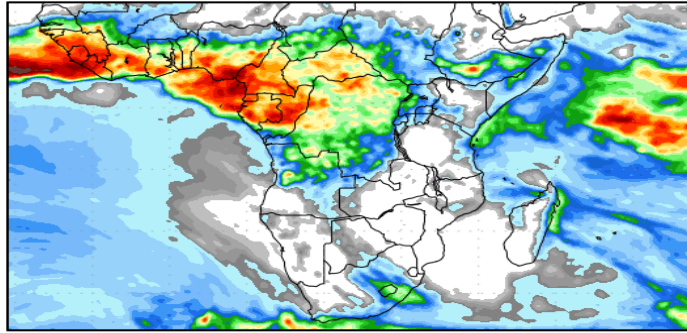
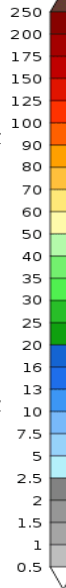
Weather

SA Medium-term Precipitation Forecasts

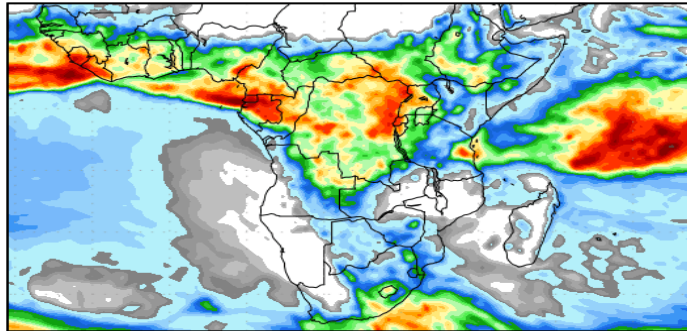
Precipitation Forecasts

Precipitation (mm)
during the period:

Tue, 03 OCT 2023 at 00Z
-to-
Wed, 11 OCT 2023 at 00Z

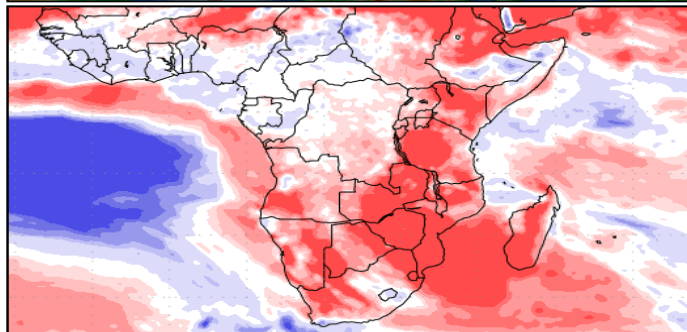
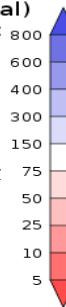


Wed, 11 OCT 2023 at 00Z
-to-
Thu, 19 OCT 2023 at 00Z



Precipitation (% of normal)
during the first period:

Tue, 03 OCT 2023 at 00Z
-to-
Wed, 11 OCT 2023 at 00Z



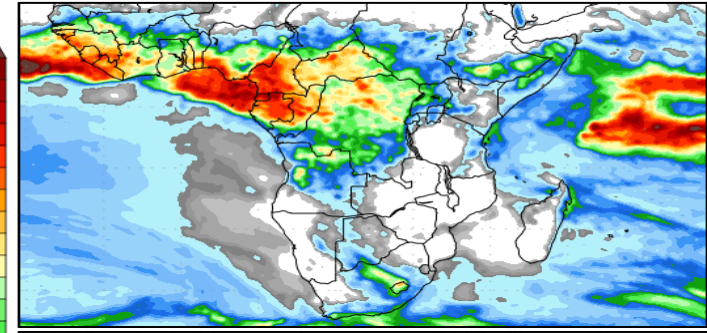
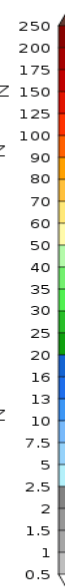
Precipitation forecasts from the National Centers for Environmental Prediction.
Normal rainfall derived from Xie-Arkin (CMAP) Monthly Climatology for 1979-2003.
Forecast Initialization Time: 00Z03OCT2023

GrADS/COLA

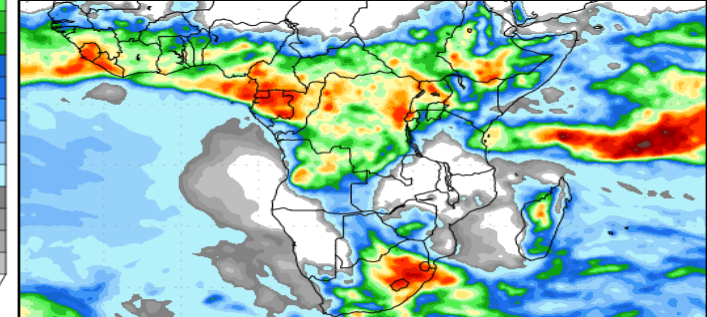
Precipitation Forecasts

Precipitation (mm)
during the period:

Wed, 04 OCT 2023 at 00Z
-to-
Thu, 12 OCT 2023 at 00Z

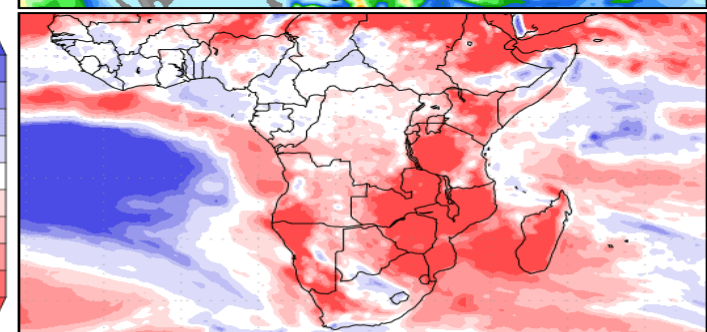
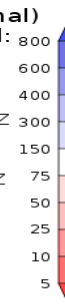


Thu, 12 OCT 2023 at 00Z
-to-
Fri, 20 OCT 2023 at 00Z



Precipitation (% of normal)
during the first period:

Wed, 04 OCT 2023 at 00Z
-to-
Thu, 12 OCT 2023 at 00Z



Precipitation forecasts from the National Centers for Environmental Prediction.
Normal rainfall derived from Xie-Arkin (CMAP) Monthly Climatology for 1979-2003.
Forecast Initialization Time: 00Z04OCT2023

GrADS/COLA