

Daily market  
Report  
13 Nov 23



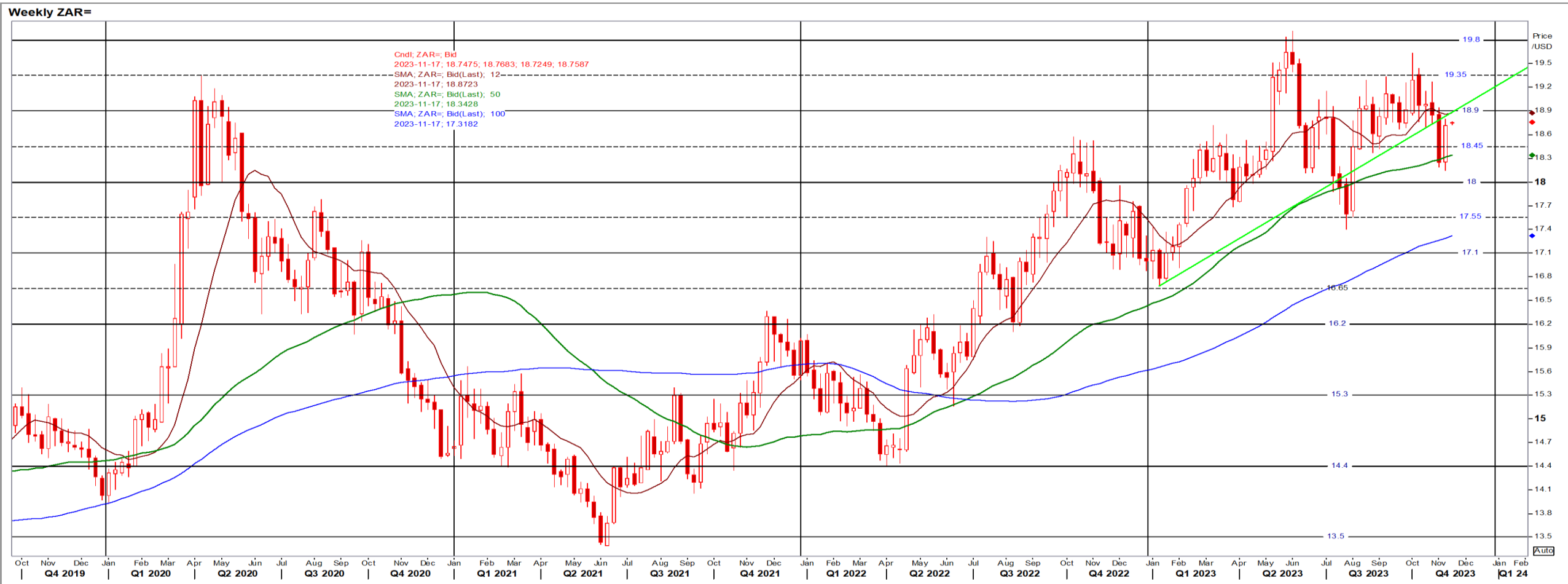
# Parity Movements (implied price moves)

USA Movement (Overnight)		Cents	Currencies	13-Nov-23	07:28:32
CORN CBOT (DEC23)	463.00	-4.75	R/\$ last	18.7469	0.0262
SOY CBOT (NOV23)	1,334.50	8.25	Euro=	1.0684	0.0007
W1 CBOT (Dec23)	570.25	-7.50	GOLD	1,938	-15.4100
W1 KCBT (Dec23)	634.75	-8.75	BRENT	80.68	-0.12
BlackSea Weat (Dec23)	249.25	0.00			
<b>Index Change</b>					
Maize (Dec23)	3,417	R -30.23	Wheat CBOT (Dec123)	3,928	-R46.10
Soya (Dec23)	9,192	R 69.59	Wheat Kansas (Dec23)	4,372	R -54.08
BlackSea Weat Near	4,673	R 6.53	Rand Effect on WEAT Parity*		R 6.79
* Average based on Prev. Spot FOB - US, Baltic and Australian Wheat.					

# South African Rand (ZAR)

USD/ZAR Weekly: Bearish > R18.45

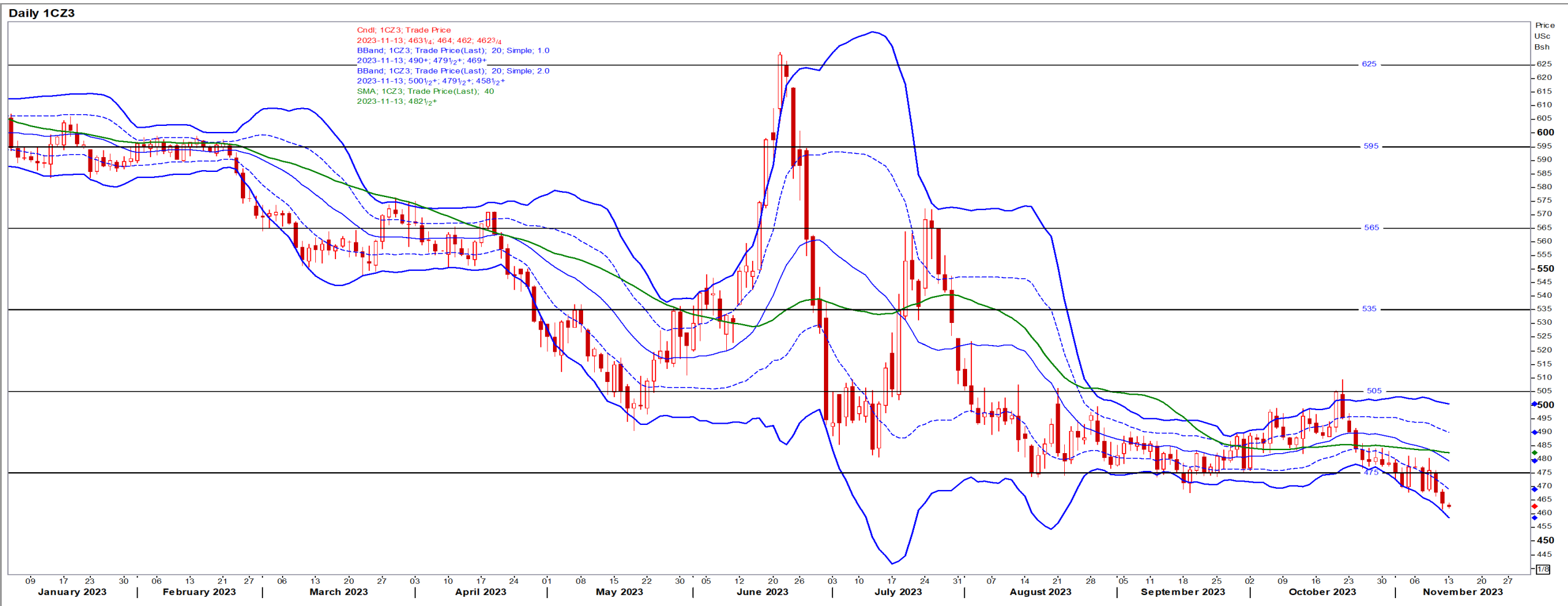
- USD steady as traders awaited US inflation data offering clues whether the Fed has more work to do to tame price pressures – Reuters News
- Weaker than R18.45 means the ZAR remains under pressure against a basically sideways USD.



# USA Corn

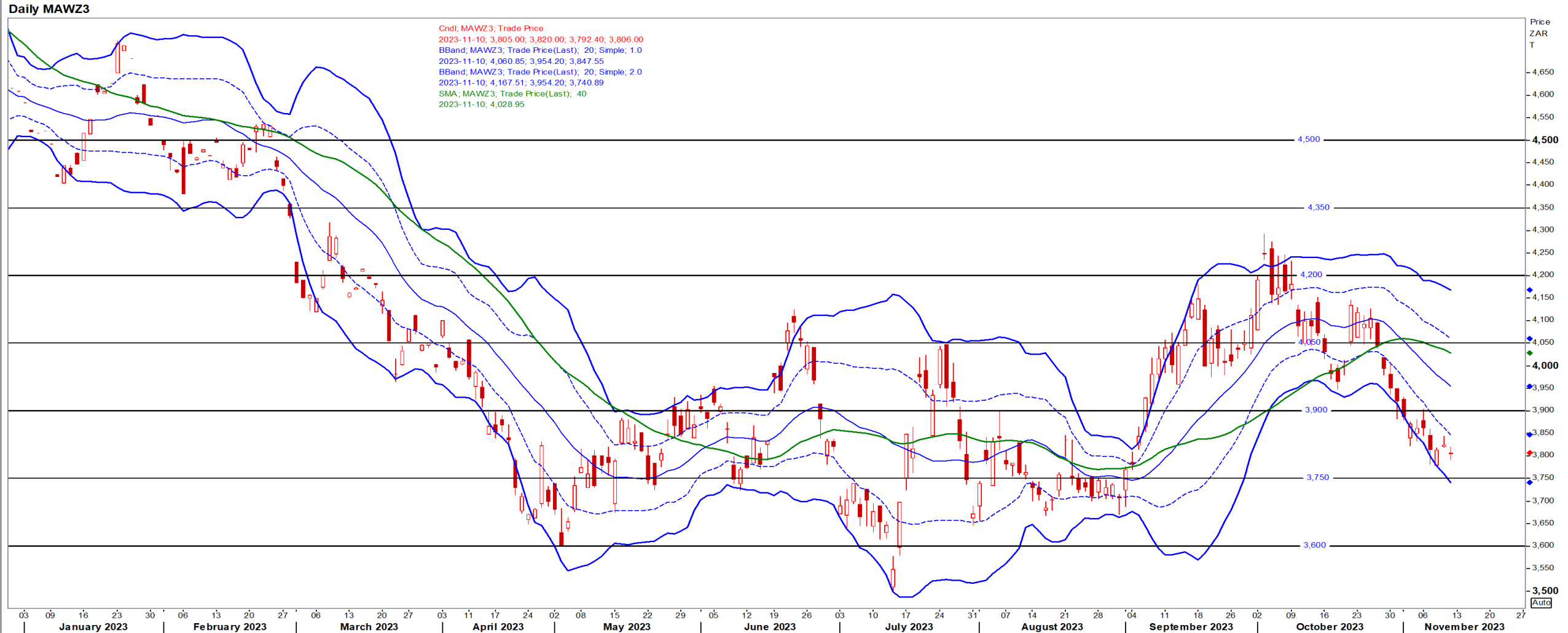
Dec23 Daily: Contract status bearish < \$4.75

- Corn turned down a second session as traders continued to react to government forecasts that farmers will produce a record-breaking crop – Reuters News



# White Maize

Dec23 Daily: Contract status bearish < R3900



# Yellow Maize

Dec23 Daily: Contract status bearish < R3900



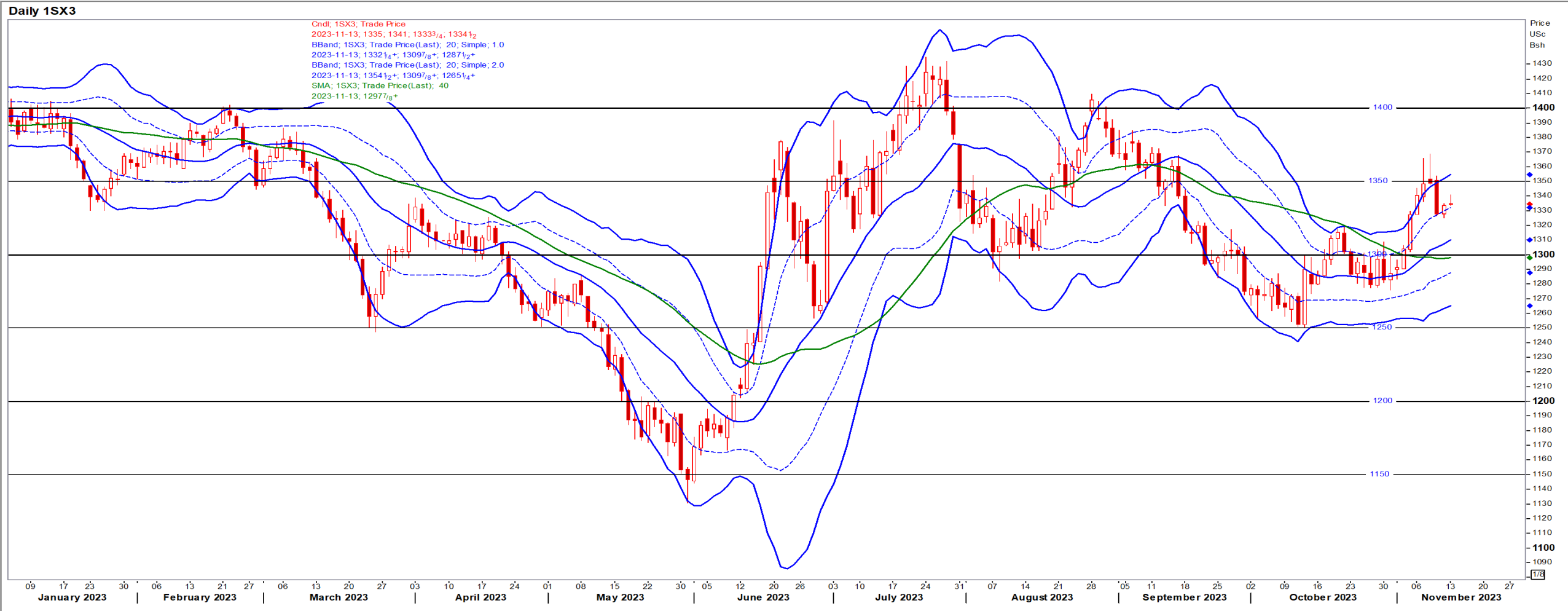
Data, news and graphs reproduced using Refinitiv. Although everything has been done to ensure the accuracy of the report NeXgro (Pty) Ltd cannot be held responsible for any losses incurred as a result of the use of the information contained in the report



# USA Soya

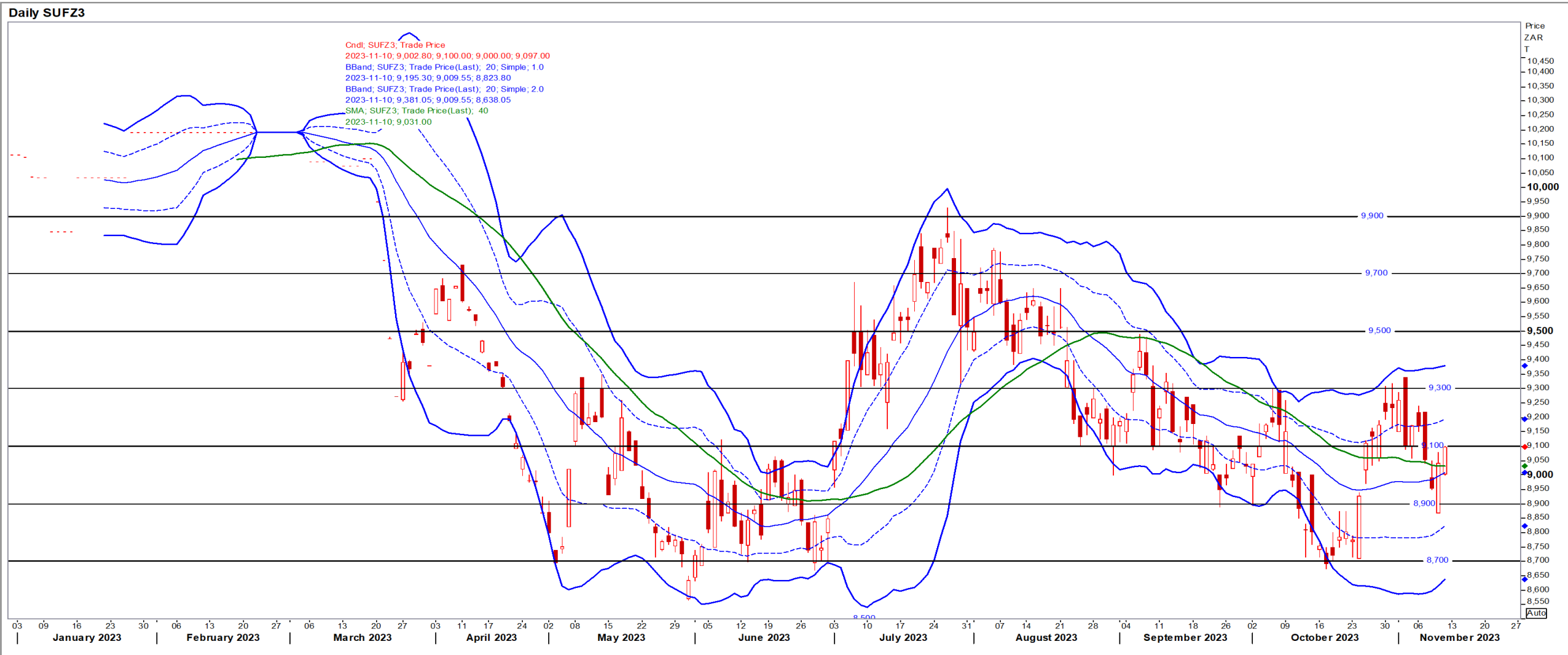
Nov23 Daily: Contract status bullish > \$13.00

- Soybeans edged lower (first weekly decline in five weeks) on pressure from a US government forecast of higher production – Reuters News



# Suns

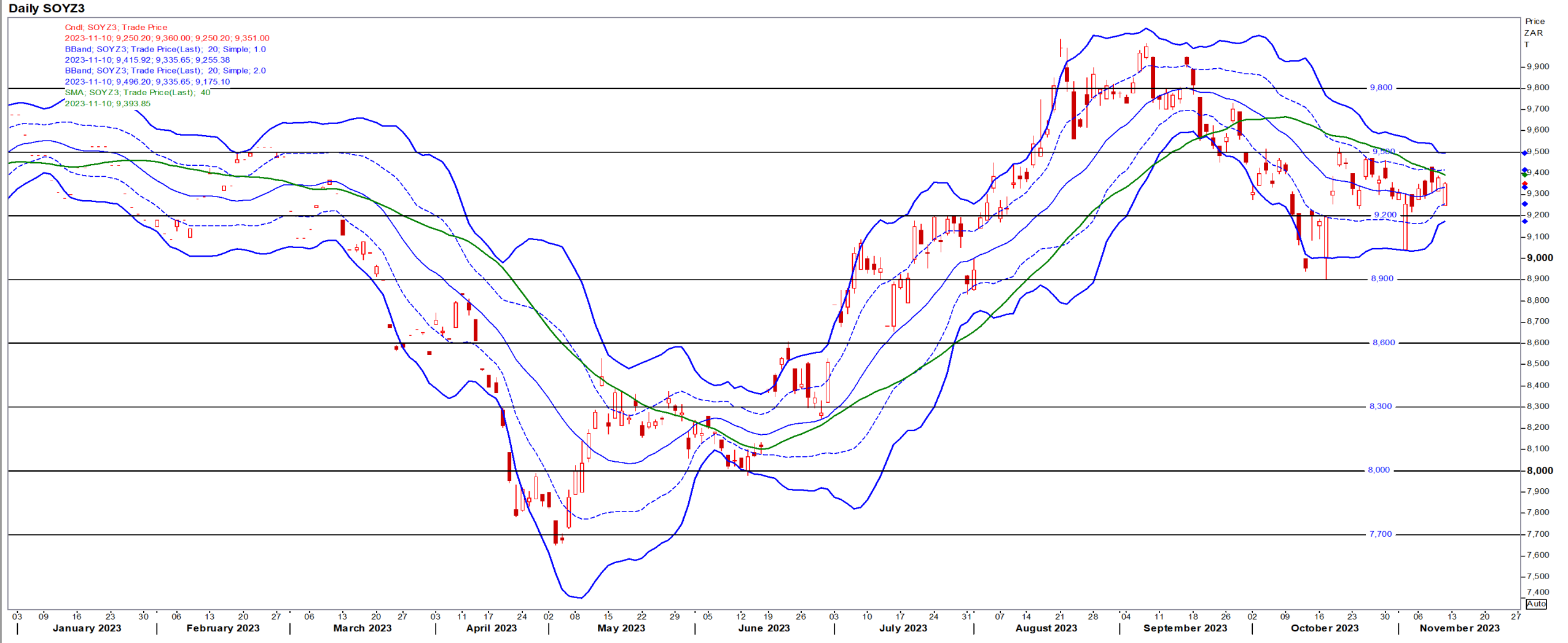
Dec23 Daily: Contract status bullish > R9000





# SA Soya

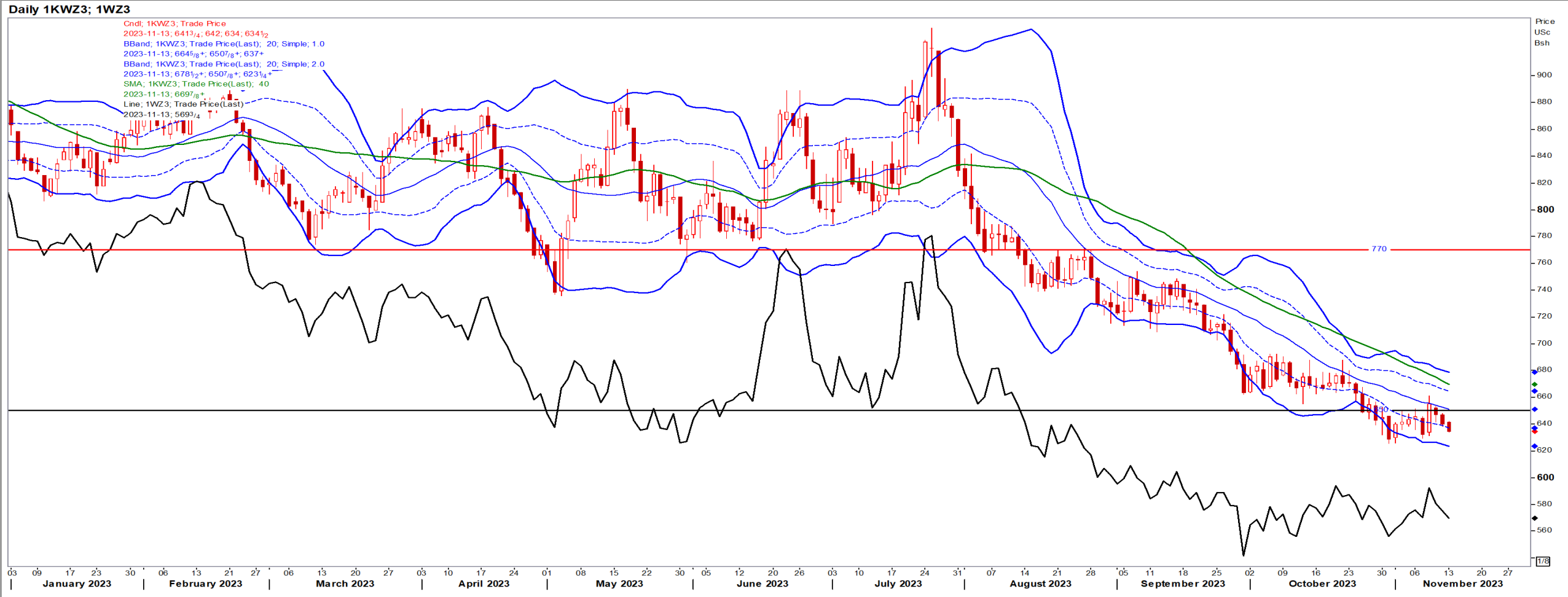
Dec23 Daily: Contract status bearish < R9400



# USA Wheat (Kansas red; CBOT black)

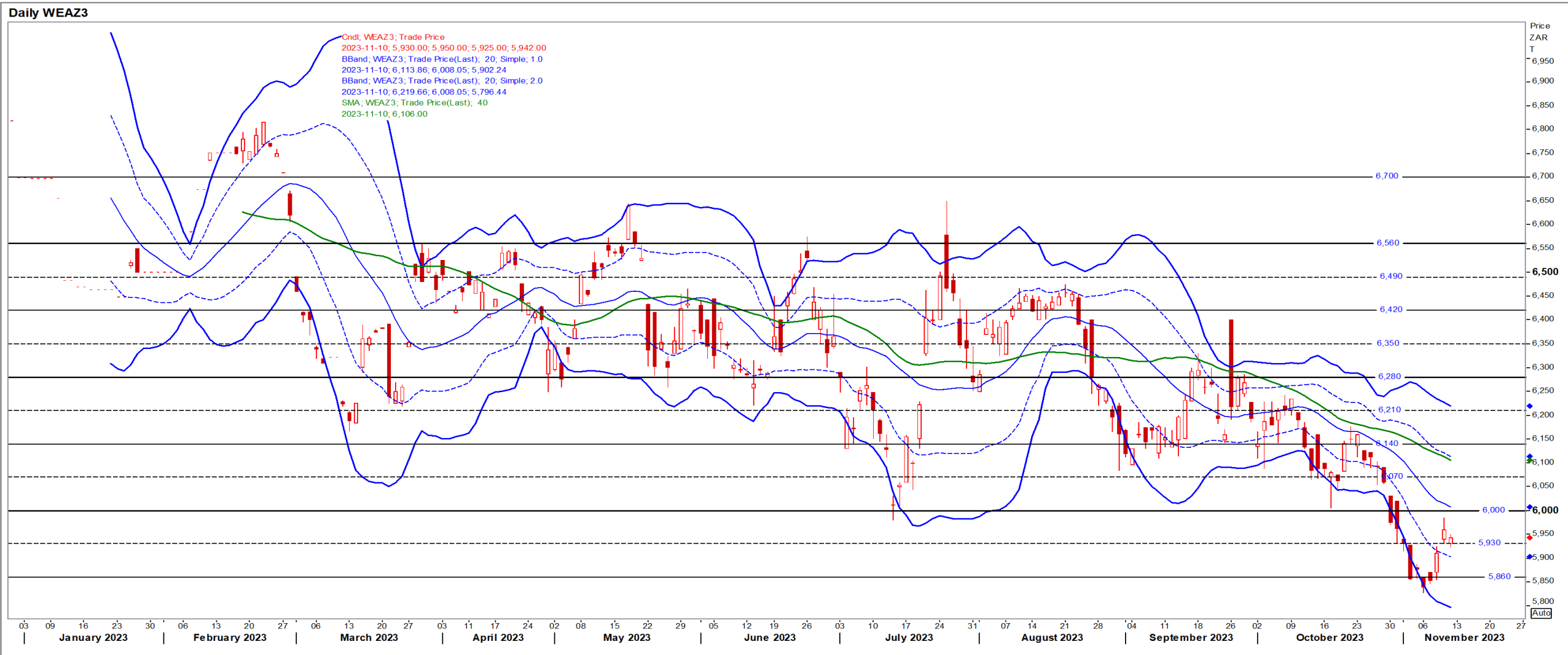
Dec23 Daily: KW contract status bearish < \$7.00

- Wheat fell on Friday, following corn, as the market continued to react to a government report that cast a bearish pall over grains.
- Commodity funds were net sellers of corn, wheat and soymeal on Friday, and net buyers of soybean and soyoil futures – Reuters News



# SA Wheat

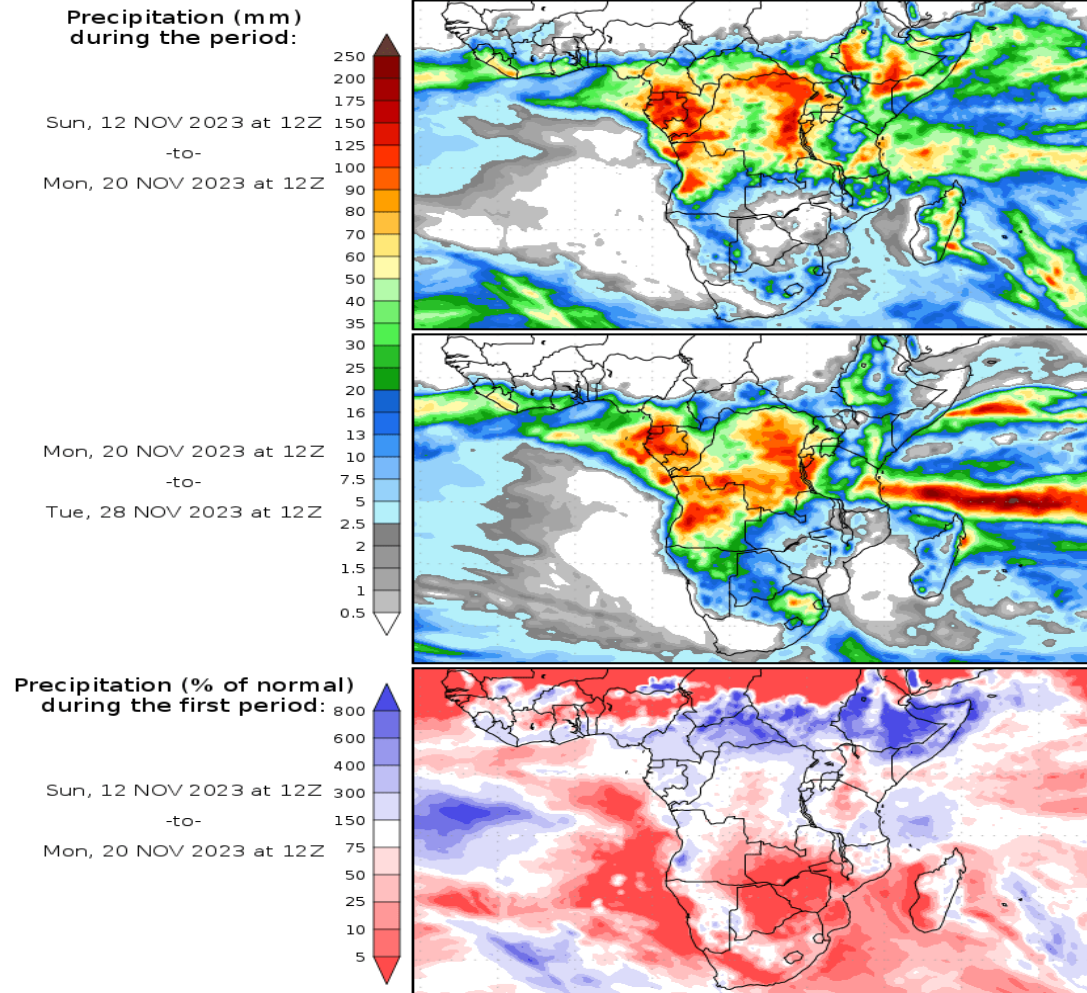
Dec23 Daily: Contract status bearish < R6100



# Weather

## SA Medium-term Precipitation Forecasts

### Precipitation Forecasts



Precipitation forecasts from the National Centers for Environmental Prediction.  
Normal rainfall derived from Xie-Arkin (CMAP) Monthly Climatology for 1979-2003.  
Forecast Initialization Time: 12Z12NOV2023

GrADS/COLA