

Daily market
Report
12 Feb 24



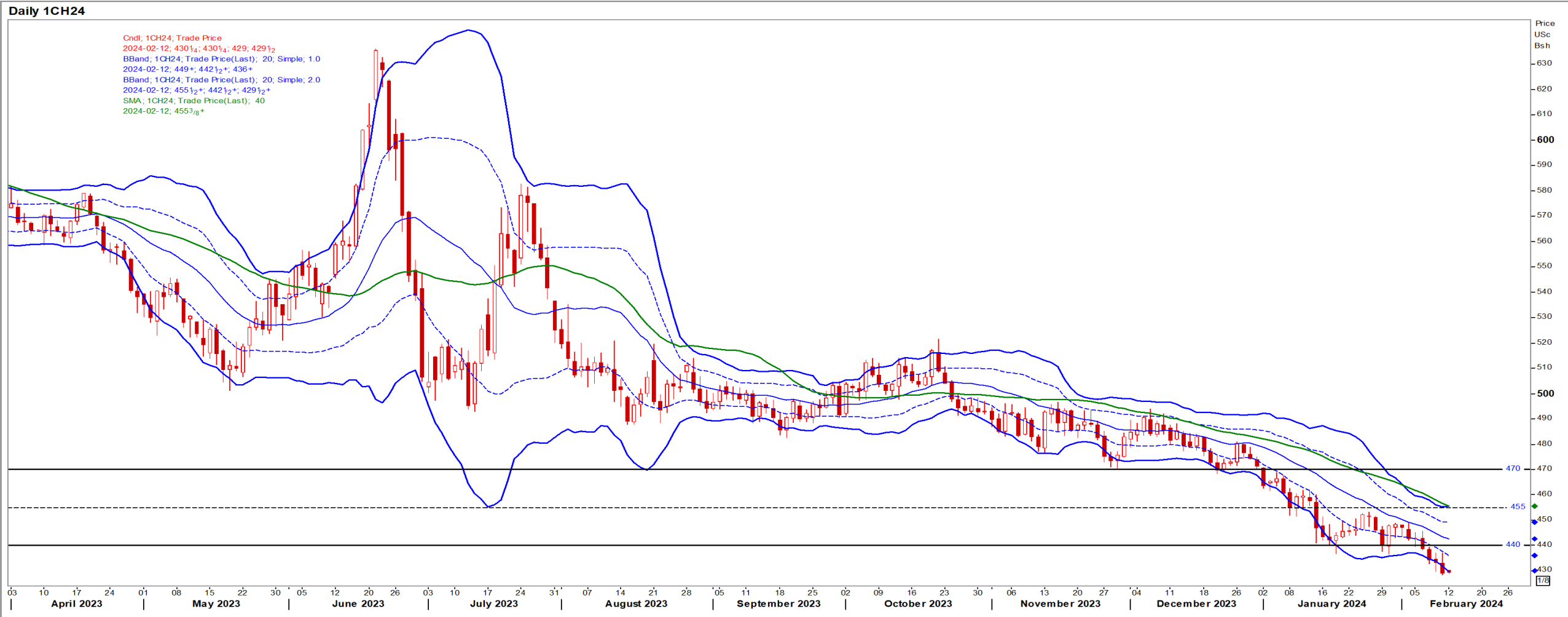
Parity Movements (implied price moves)

USA Movement (Overnight)	Cents	Currencies	12-Feb-24	07:37:07	
CORN CBOT (Mar24)	429.75	-2.00	R/\$ last	19.0391	0.0139
SOY CBOT (Mar24)	1,188.25	1.75	Euro=	1.0794	0.0029
W1 CBOT (Mar24)	595.50	4.75	GOLD	2,023	-7.9694
W1 KCBT (Mar24)	600.25	1.50	BRENT	81.89	0.07
BlackSea Weat (Mar24)	203.00	0.00			
Index Change					
Maize (Mar24)	3,221	R -12.63	Wheat CBOT (Mar24)	4,166	R36.25
Soya (Mar24)	8,312	R 18.30	Wheat Kansas (Mar24)	4,199	R 13.55
BlackSea Weat Near	3,865	R 2.82	RAND EFFECT ON WHEAT PARITY	4,189	R 3.06

USA Corn

Mar24 Daily: Contract status bearish < \$4.55

- Corn fell to a three-year low pressured by improving South American crop weather and ample supplies – Reuters News.

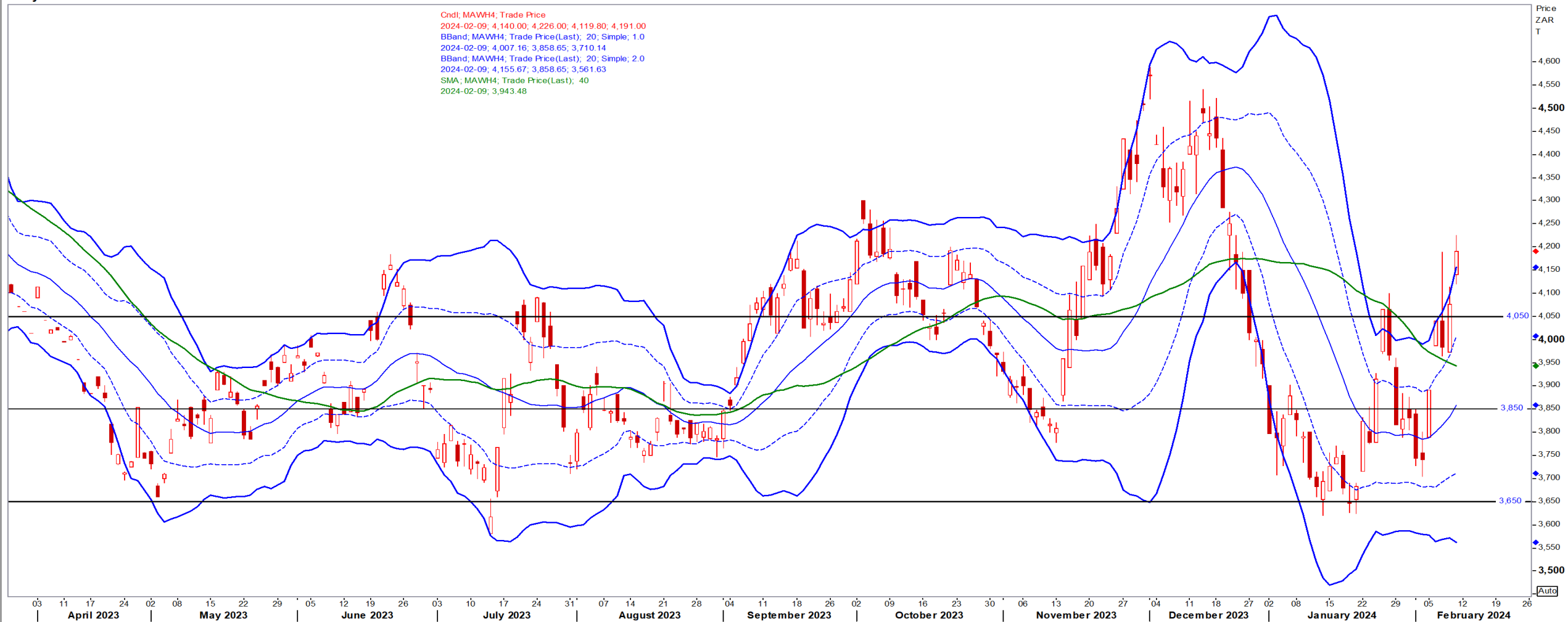


White Maize

Mar24 Daily: Contract status bullish > R4050

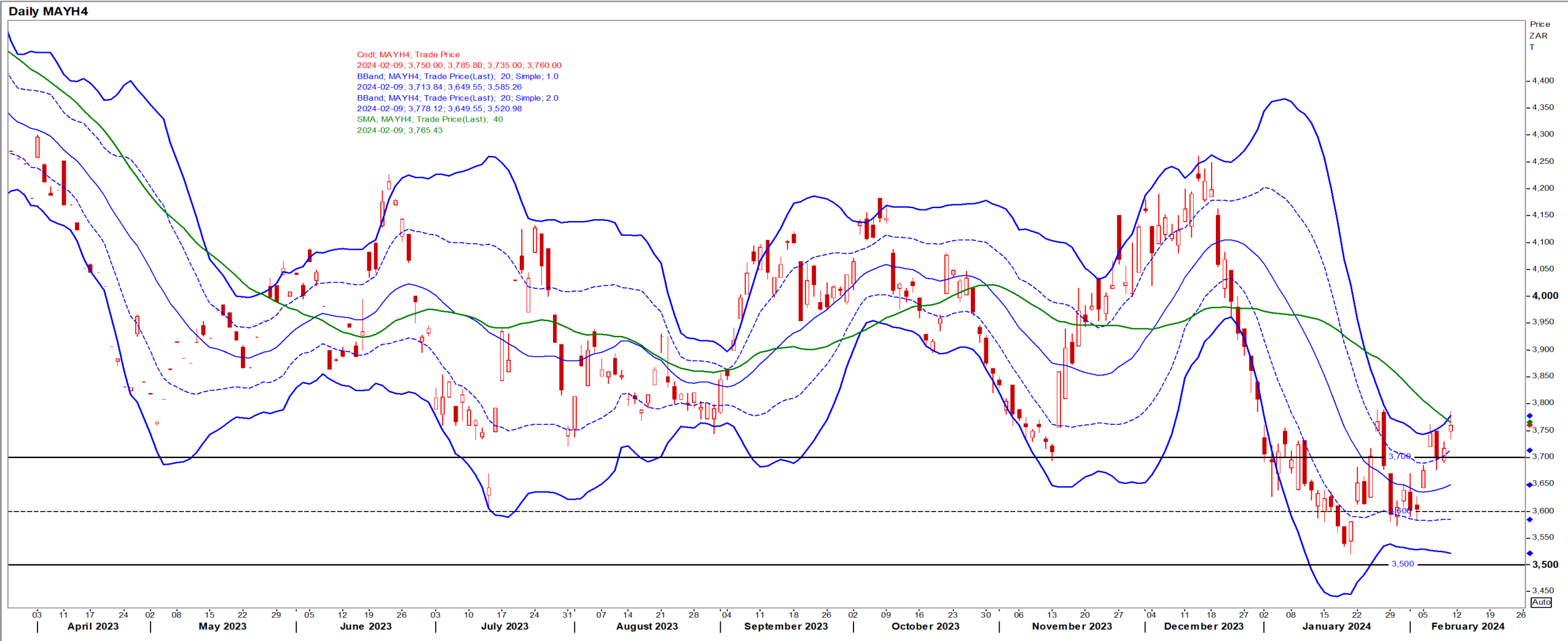
Daily MAWH4

Cndt, MAWH4; Trade Price
2024-02-09; 4,140.00; 4,226.00; 4,119.80; 4,191.00
BBand, MAWH4; Trade Price(Last); 20; Simple; 1.0
2024-02-09; 4,007.16; 3,858.65; 3,710.14
BBand, MAWH4; Trade Price(Last); 20; Simple; 2.0
2024-02-09; 4,155.67; 3,858.65; 3,561.63
SMA, MAWH4; Trade Price(Last); 40
2024-02-09; 3,943.48



Yellow Maize

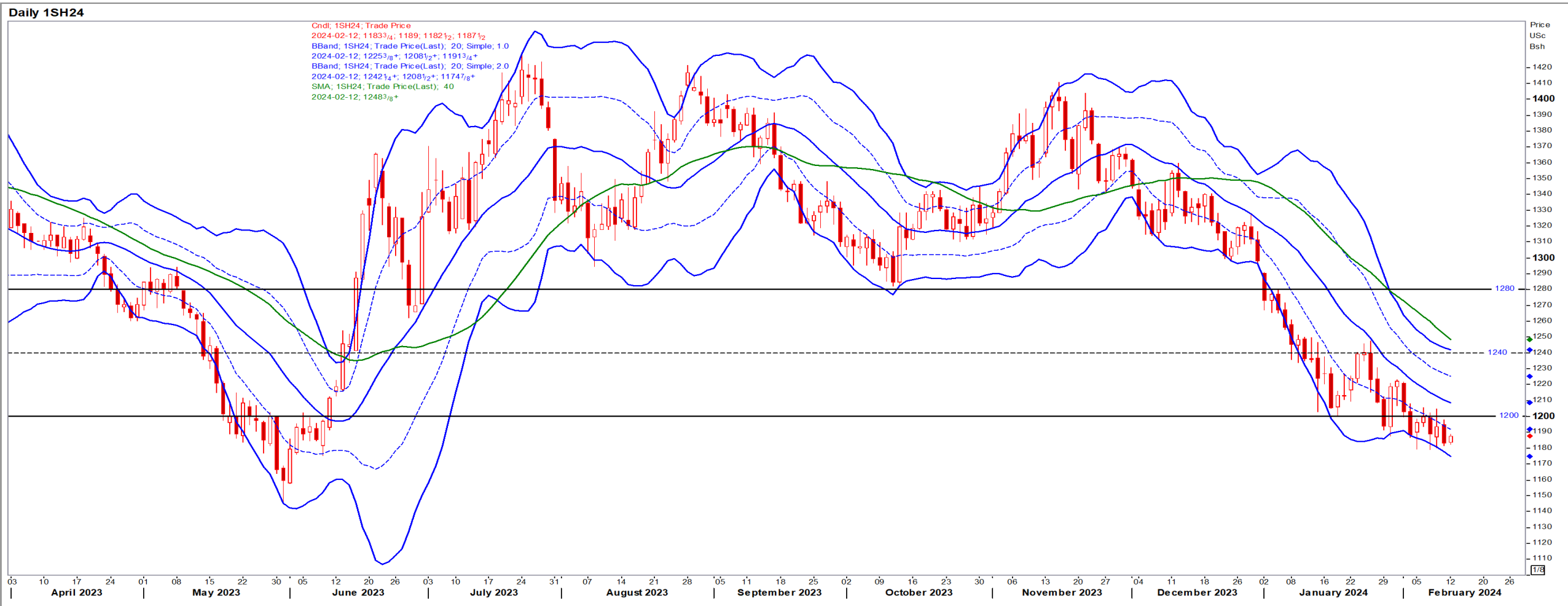
Mar24 Daily: Contract status bullish > R3700



USA Soya

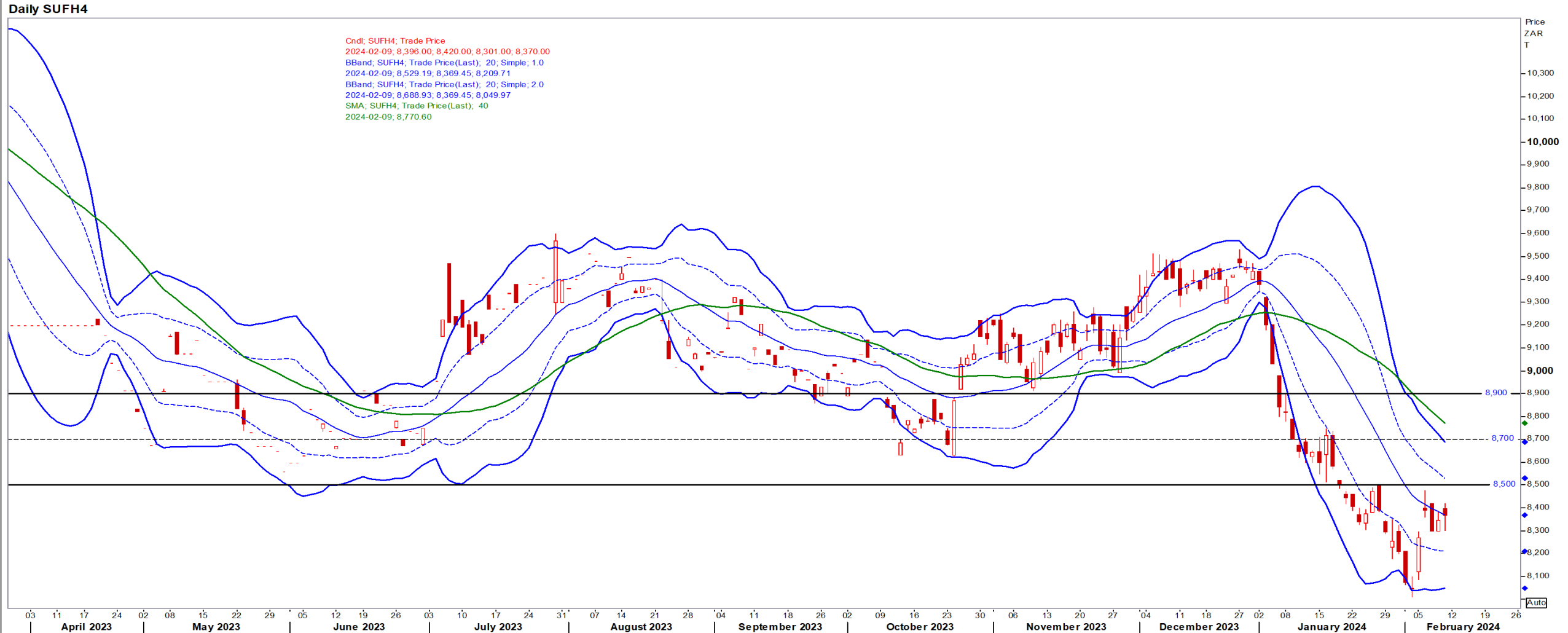
Mar24 Daily: Contract status bearish < \$12.00

- Soybeans remained near 3 year lows as USDA raised estimates for inventories and speculators bet on further price drops on global supply – Reuters News.



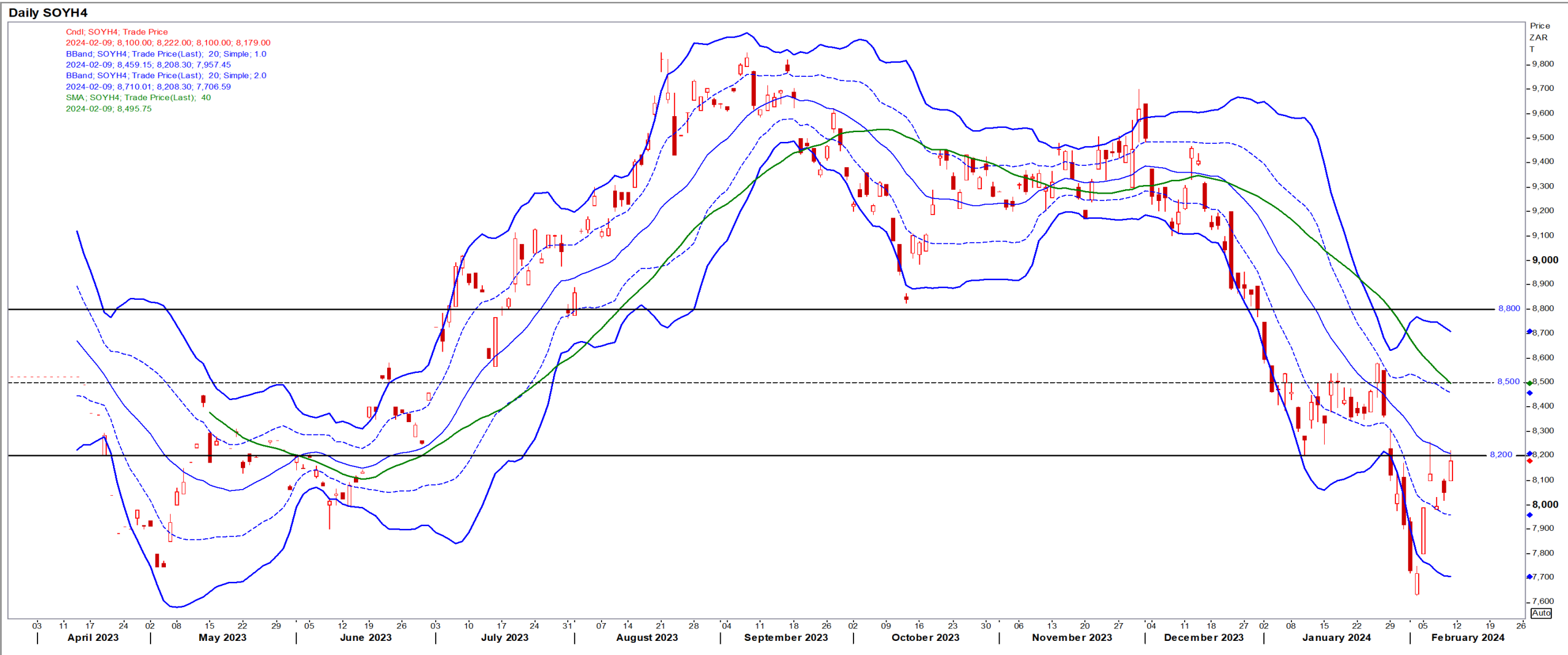
Suns

Mar24 Daily: Contract status bearish < R8500



SA Soya

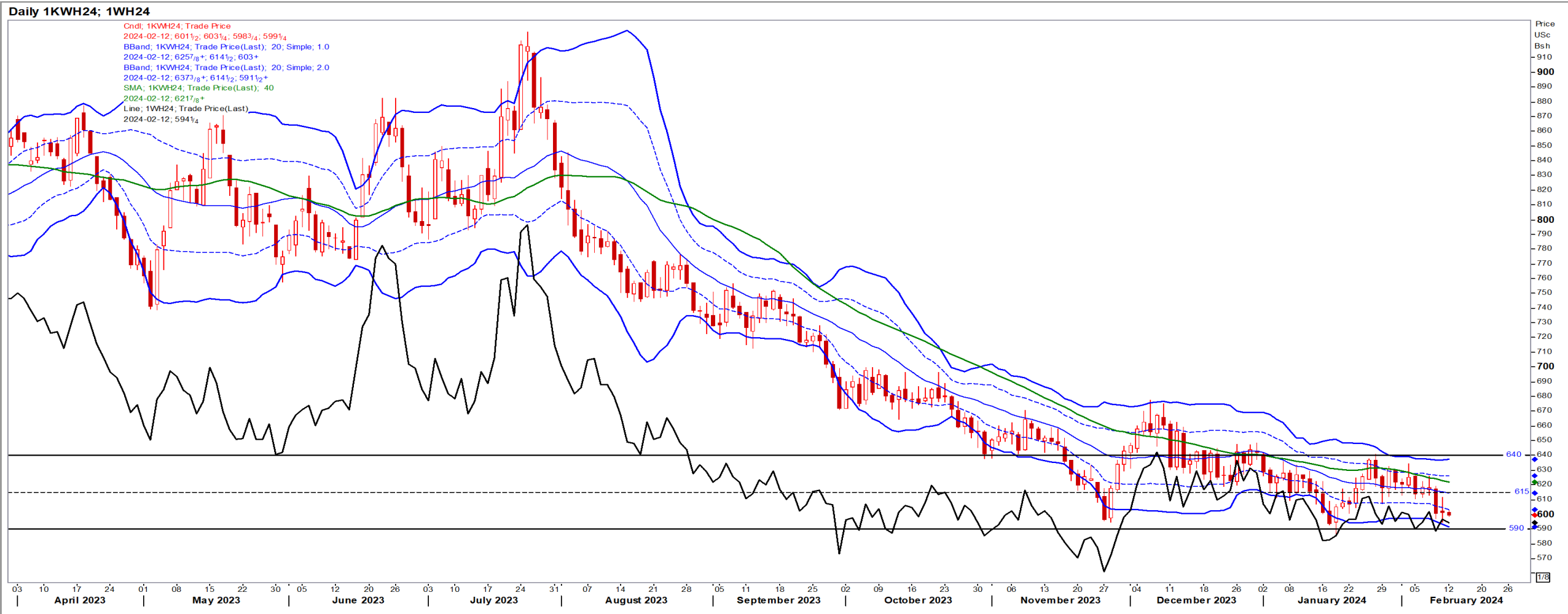
Mar24 Daily: Contract status bearish < R8200



USA Wheat (Kansas red; CBOT black)

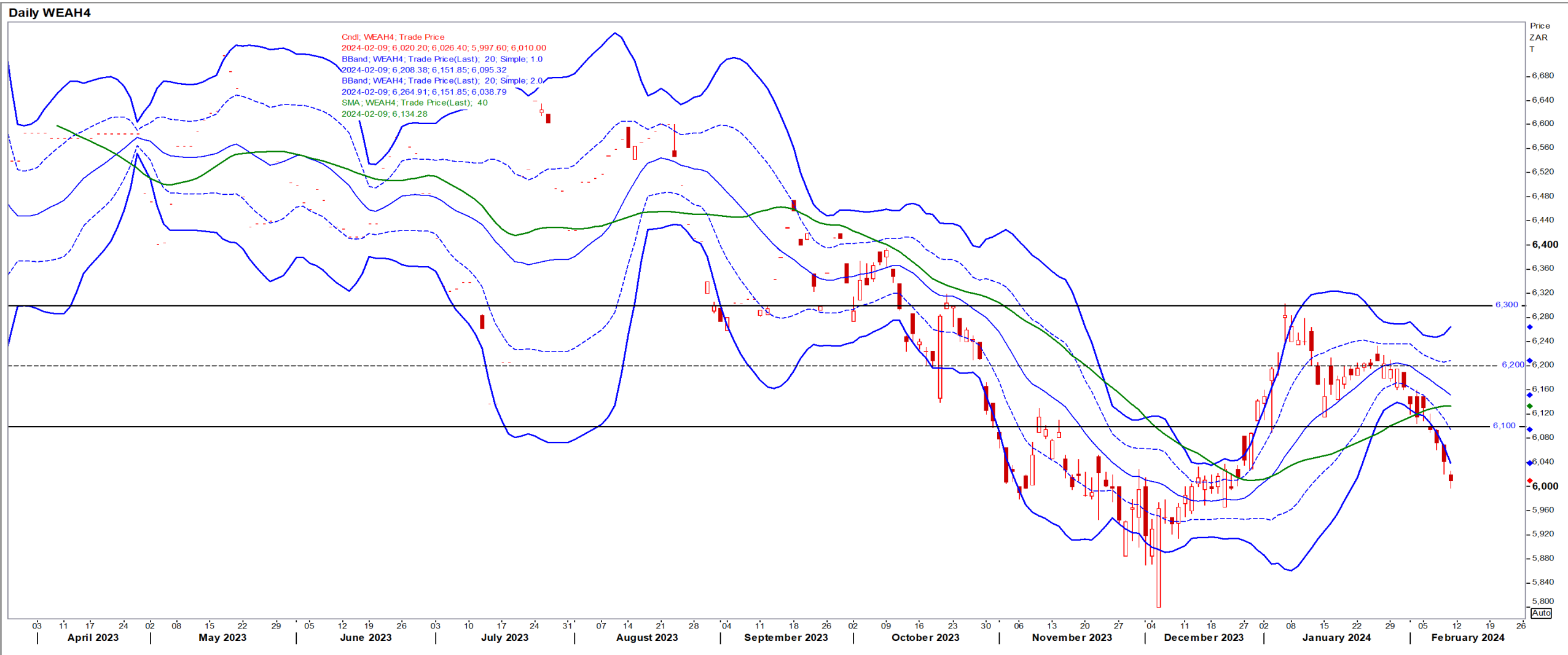
Mar24 Daily: KW contract status bearish < \$6.15

- Wheat rebounded on bargain buying, short covering and a softening USD – Reuters News.



SA Wheat

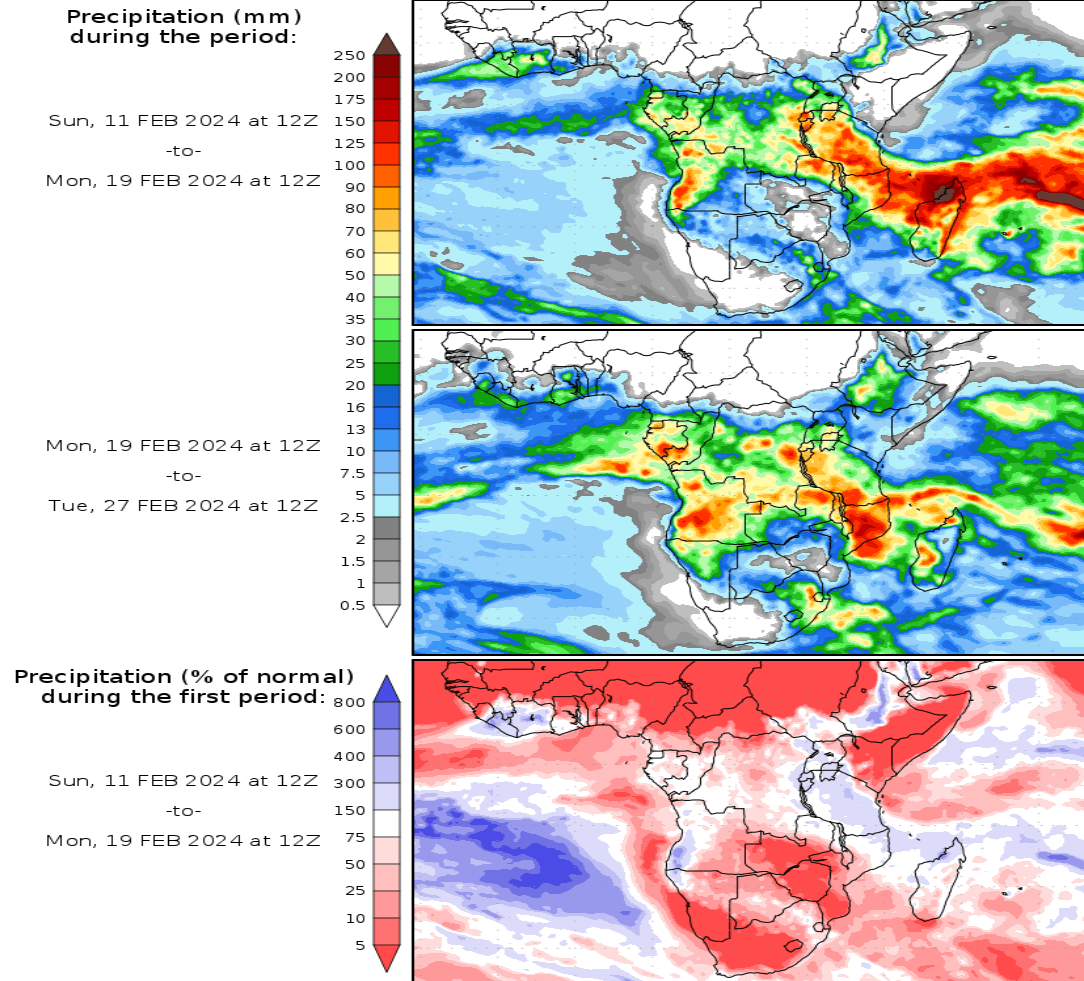
Mar24 Daily: Contract status bearish < R6100



Weather

SA Medium-term Precipitation Forecasts

Precipitation Forecasts



Precipitation forecasts from the National Centers for Environmental Prediction.
Normal rainfall derived from Xie-Arkin (CMAP) Monthly Climatology for 1979-2003.
Forecast Initialization Time: 12Z11FEB2024

GrADS/COLA