

Daily market  
Report  
13 Feb 24



# Parity Movements (implied price moves)

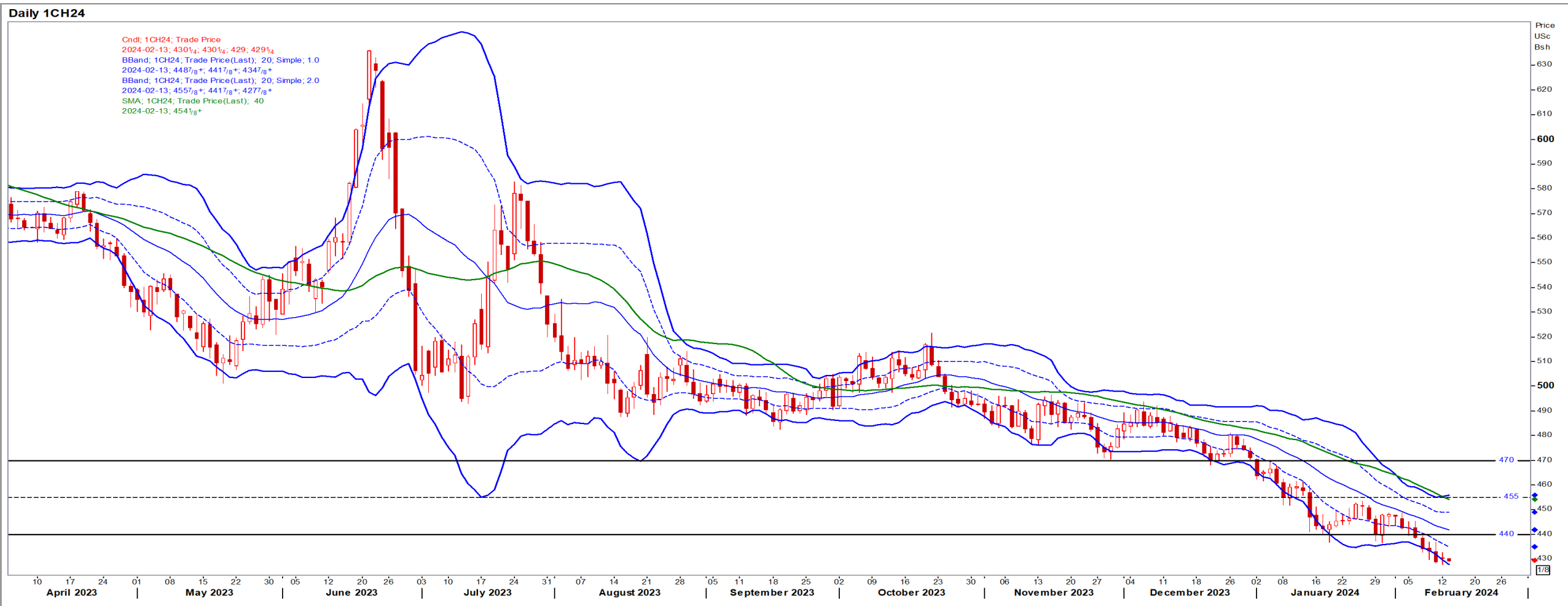
USA Movement (Overnight)		Cents	Currencies	13-Feb-24	07:48:46
CORN CBOT (Mar24)	429.25	-1.00	R/\$ last	18.9101	-0.1279
SOY CBOT (Mar24)	1,188.25	0.25	Euro=	1.0766	-0.0003
W1 CBOT (Mar24)	594.25	1.50	GOLD	2,021	0.4579
W1 KCBT (Mar24)	596.00	-2.25	BRENT	82.1	0.33
BlackSea Weat (Mar24)	203.00	0.00			
<b>Index Change</b>					
Maize (Mar24)	3,196	R -29.11	Wheat CBOT (Mar24)	4,129	-R17.43
Soya (Mar24)	8,255	R -54.09	Wheat Kansas (Mar24)	4,141	R -43.75
BlackSea Weat Near	3,839	R -25.96	RAND EFFECT ON WHEAT PARITY	4,157	-R 28.11



# USA Corn

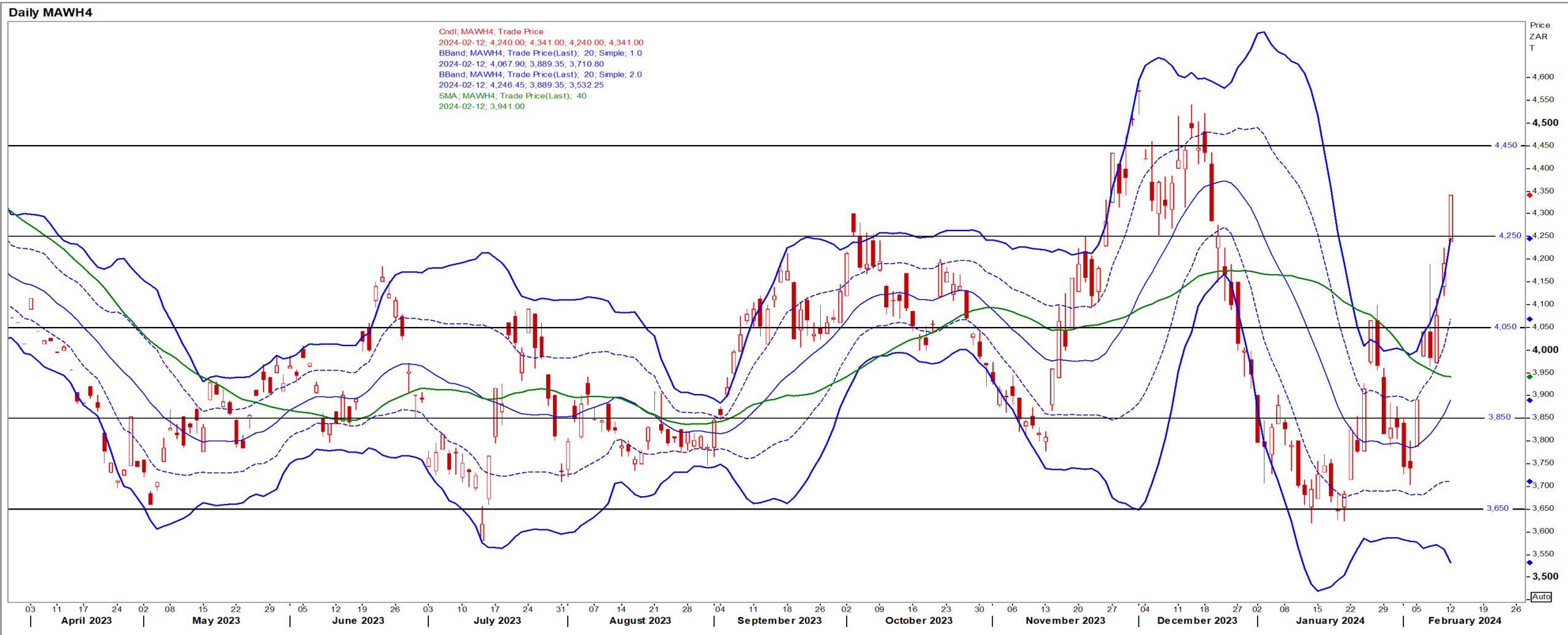
Mar24 Daily: Contract status bearish < \$4.55

- Corn turned up on bargain buying but the market continues to feel pressure from ample supplies and improving Argentina crop weather – Reuters News.



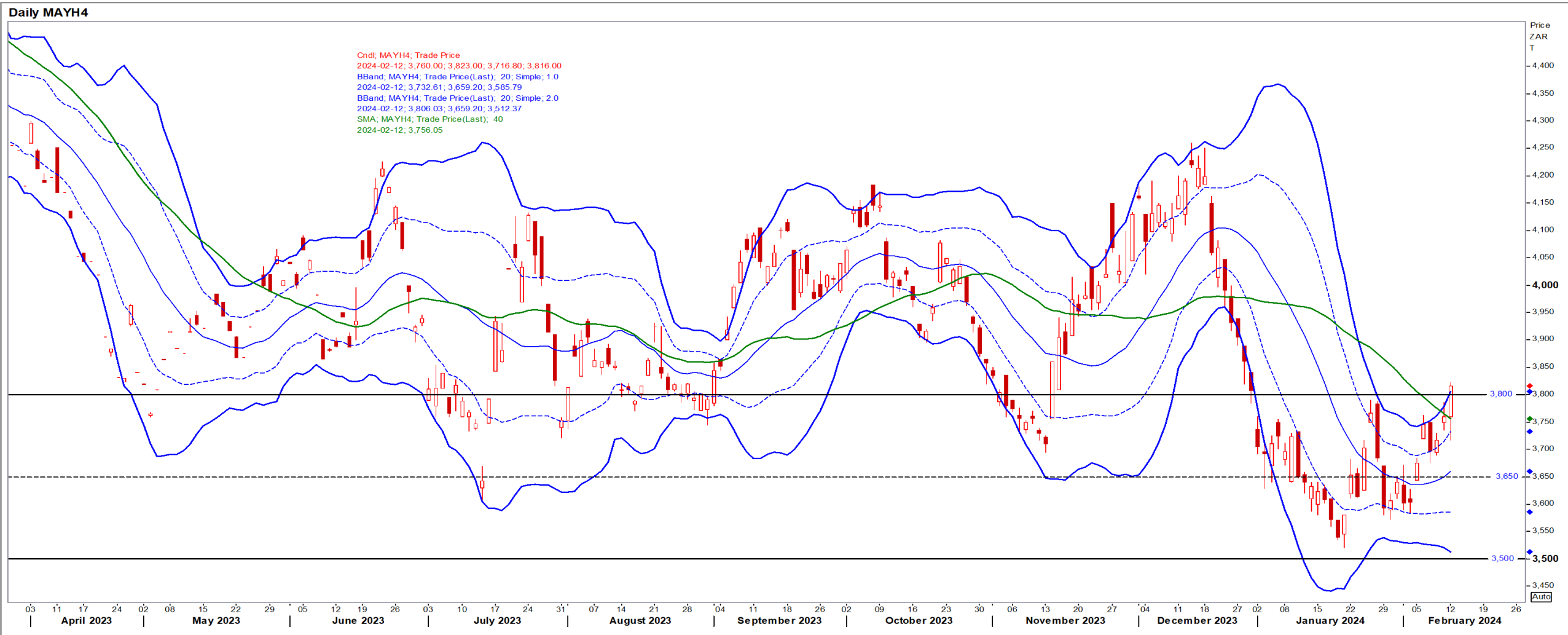
# White Maize

Mar24 Daily: Contract status bullish > R4050



# Yellow Maize

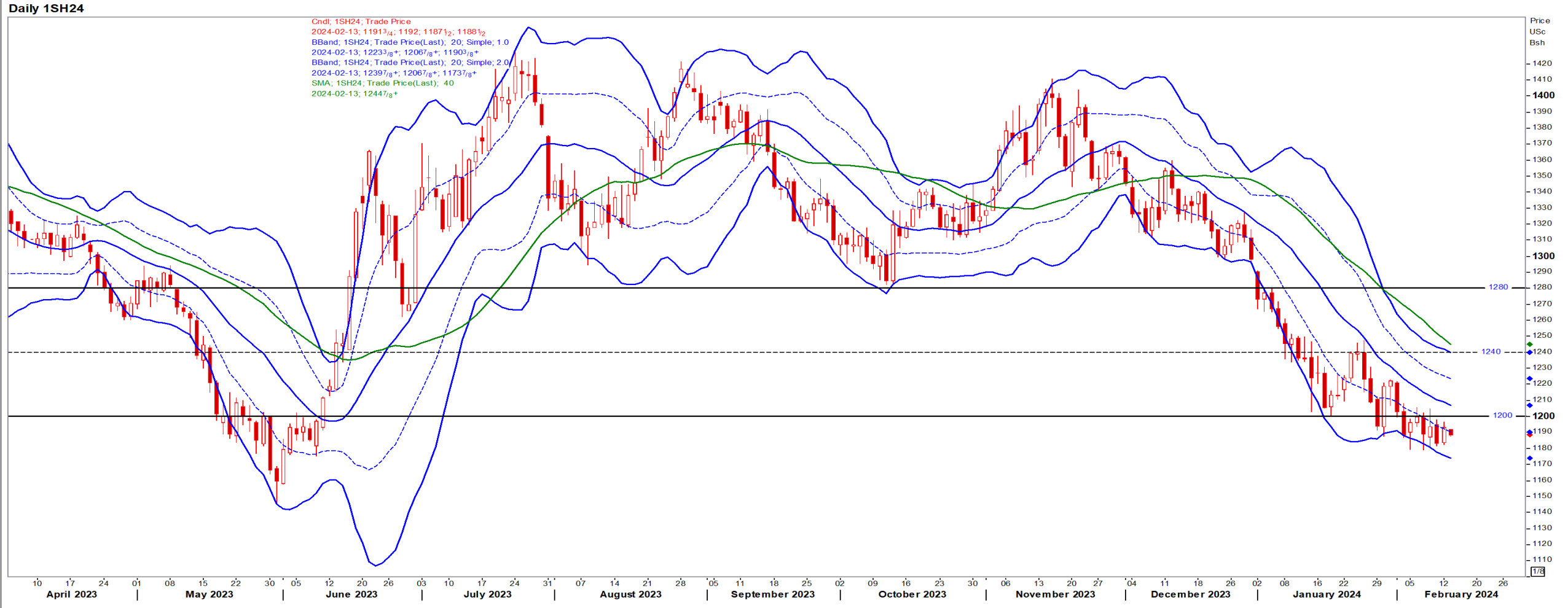
Mar24 Daily: Contract status bullish > R3750



# USA Soya

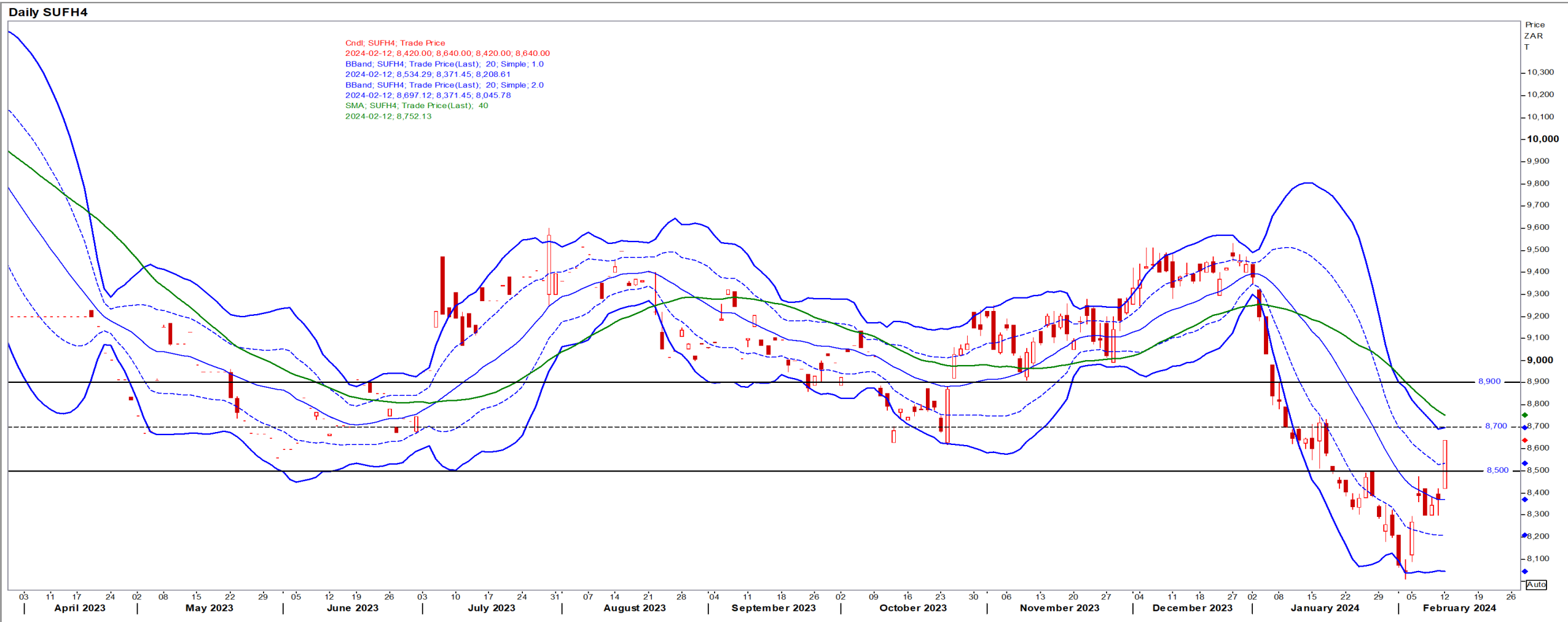
Mar24 Daily: Contract status bearish < \$12.00

- Soybeans fell to near three-year lows as forecasts of rainfall in South America bolstered expectations of ample supplies – Reuters News.



# Suns

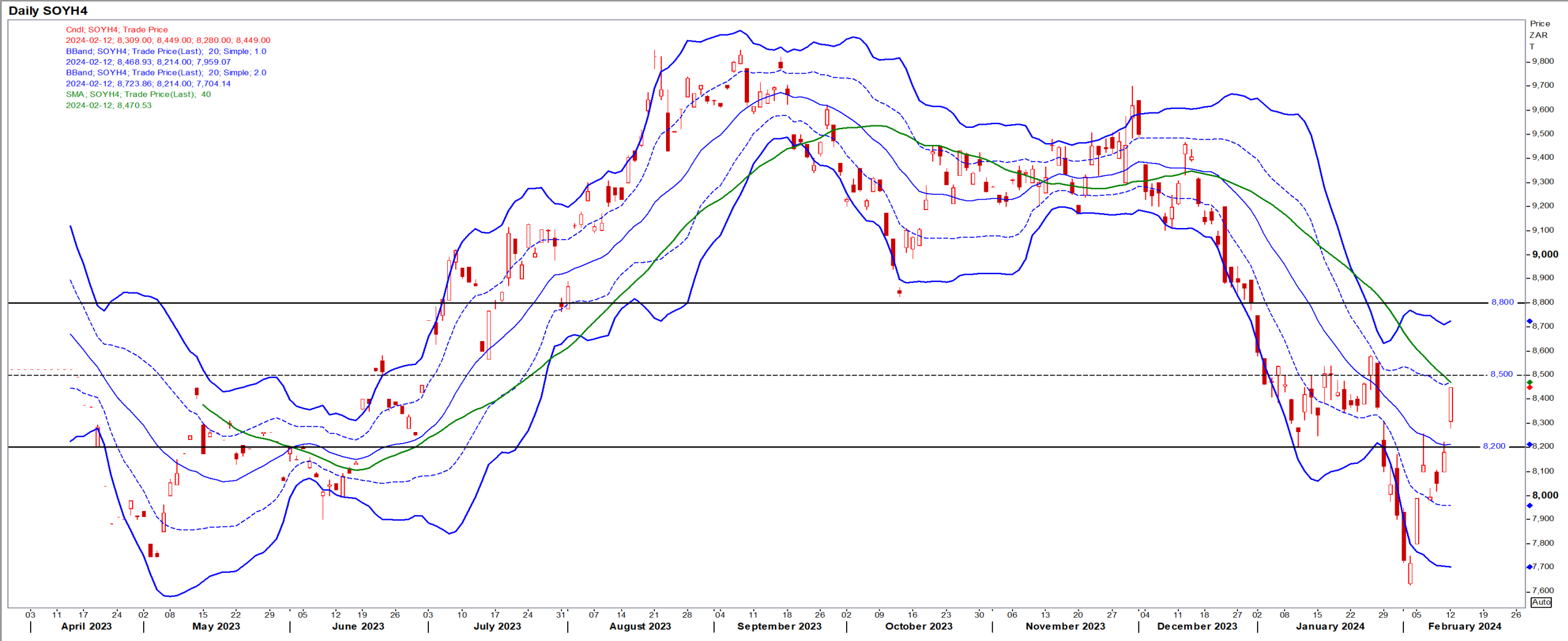
Mar24 Daily: Contract status sideways R8500/R8900





# SA Soya

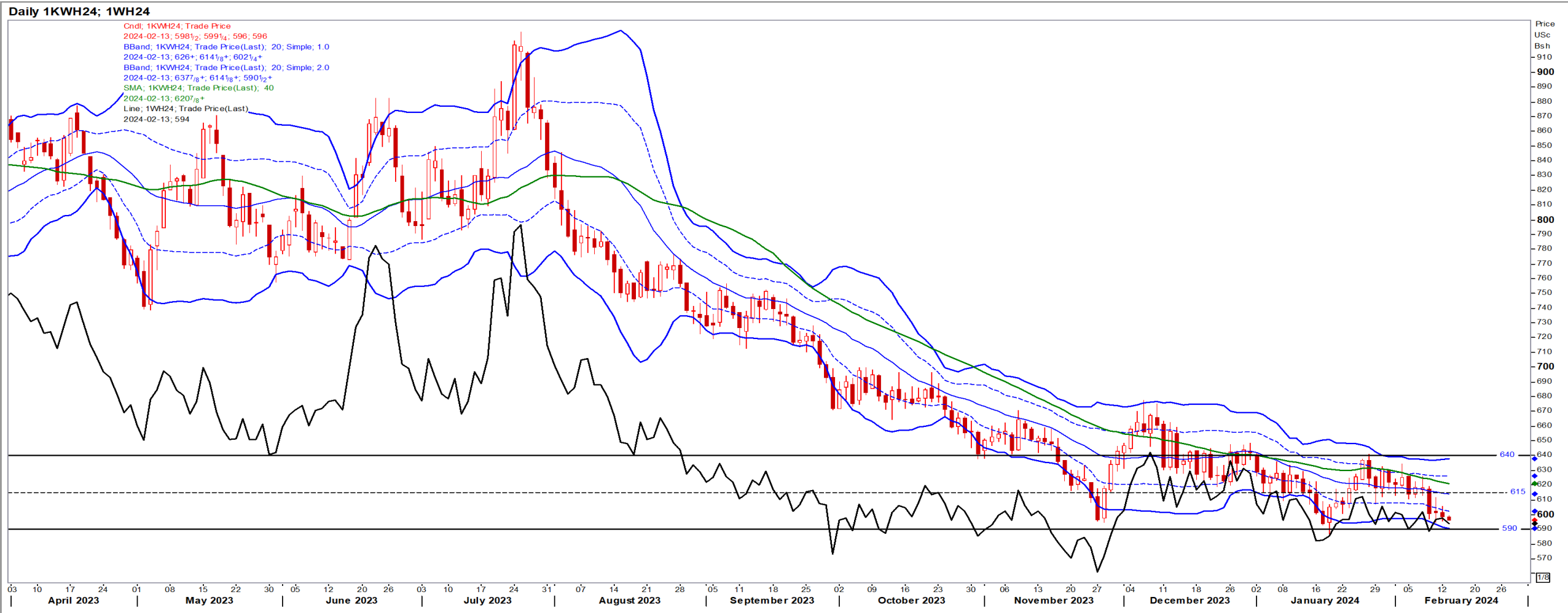
Mar24 Daily: Contract status sideways R8200/R8800



# USA Wheat (Kansas red; CBOT black)

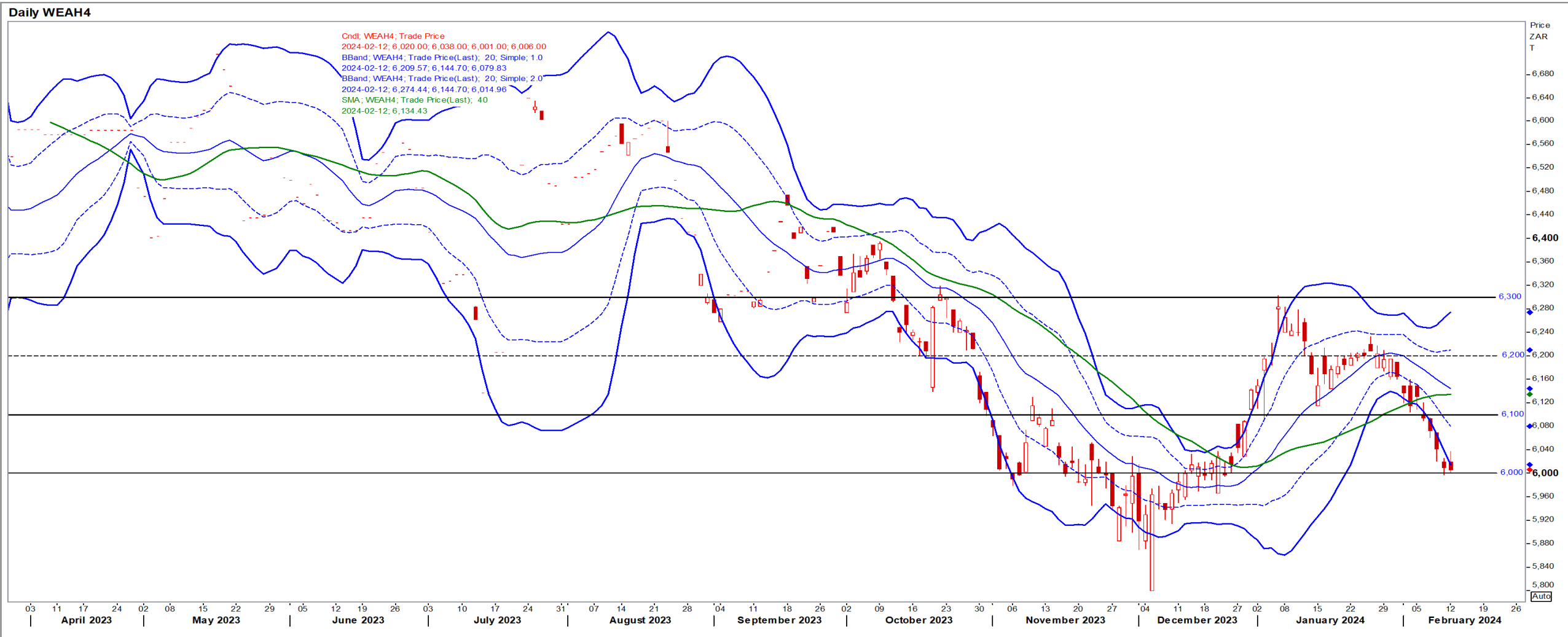
Mar24 Daily: KW contract status bearish < \$6.15

- Wheat slipped as declining Russian grain prices maintained pressure on the market – Reuters News.



# SA Wheat

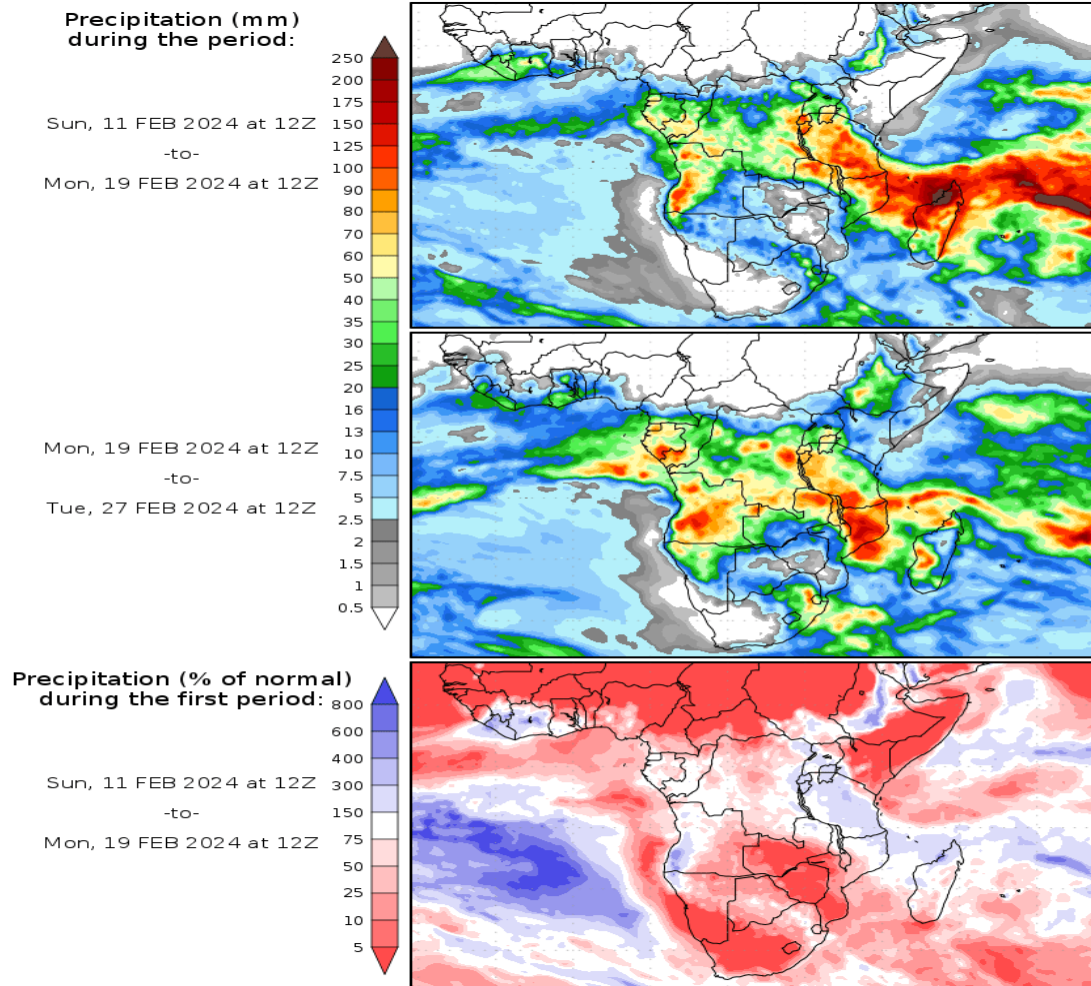
Mar24 Daily: Contract status bearish < R6100



# Weather

## SA Medium-term Precipitation Forecasts

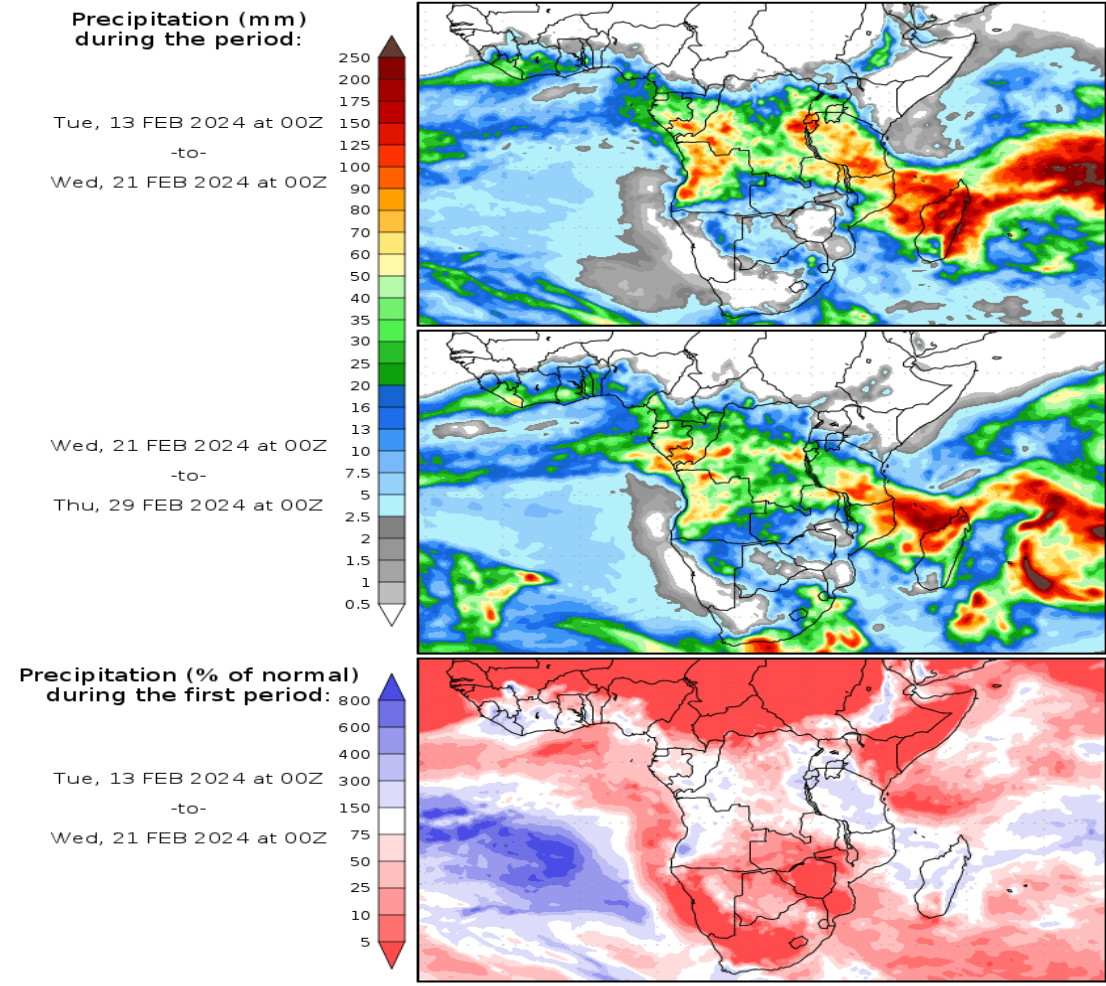
### Precipitation Forecasts



Precipitation forecasts from the National Centers for Environmental Prediction.  
Normal rainfall derived from Xie-Arkin (CMAP) Monthly Climatology for 1979-2003.  
Forecast Initialization Time: 12Z11FEB2024

GrADS/COLA

### Precipitation Forecasts



Precipitation forecasts from the National Centers for Environmental Prediction.  
Normal rainfall derived from Xie-Arkin (CMAP) Monthly Climatology for 1979-2003.  
Forecast Initialization Time: 00Z13FEB2024

GrADS/COLA