

Daily market
Report
29 Apr 24



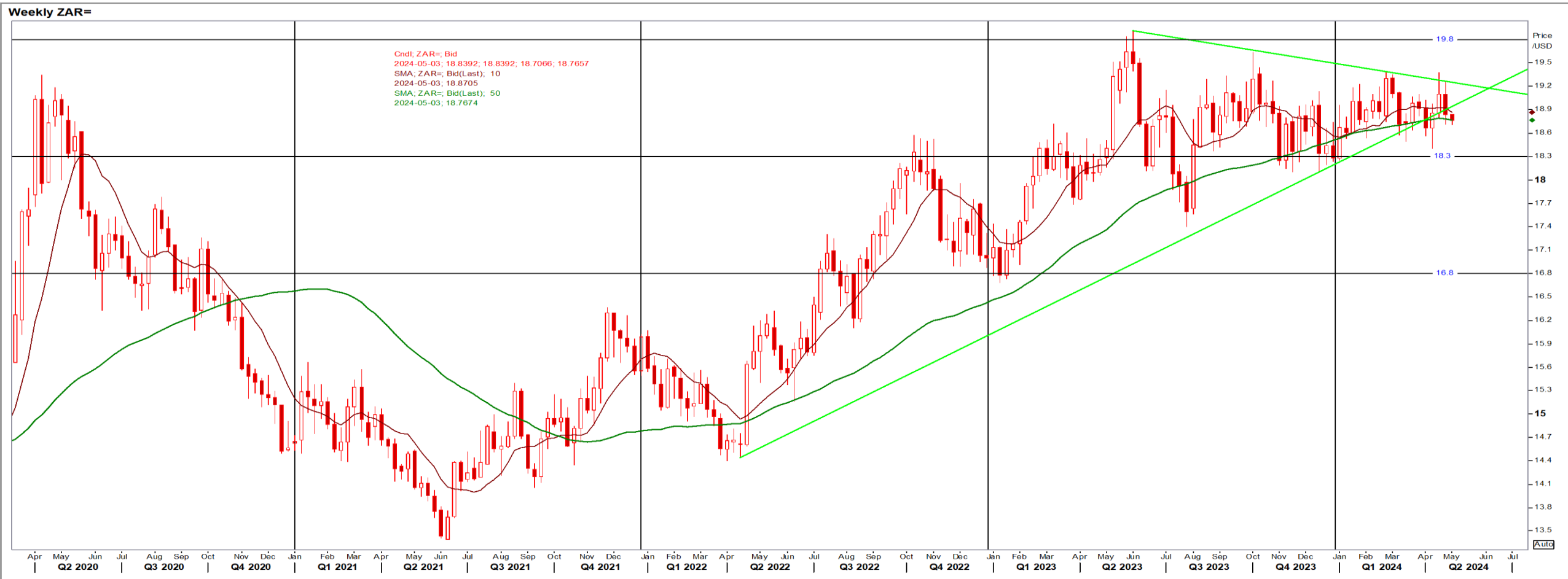
Parity Movements (implied price moves)

USA Movement (Overnight)	Cents	Currencies	29-Apr-24	07:55:19	
CORN CBOT (Jul24)	450.75	-0.75	R/\$ last	18.7658	-0.2617
SOY CBOT (Jul24)	1,181.50	6.25	Euro=	1.0723	-0.0011
W1 CBOT (Jul24)	622.00	2.50	GOLD	2,331	-18.6250
W1 KCBT (Jul24)	663.00	23.25	BRENT	88.75	-0.60
BlackSea Weat (Near)	204.00	0.00			
Index Change					
Maize (Jul24)	3,330	R -52.06	Wheat CBOT (Jul24)	4,289	-R42.33
Soya (Jul24)	8,146	R -69.91	Wheat Kansas (Jul24)	4,572	R 98.80
BlackSea Weat Near	3,828	R -53.39	RAND EFFECT ON WHEAT PARITY	4,411	-R 61.52

South African Rand (ZAR)

USD/ZAR Weekly: Bearish > R18.78

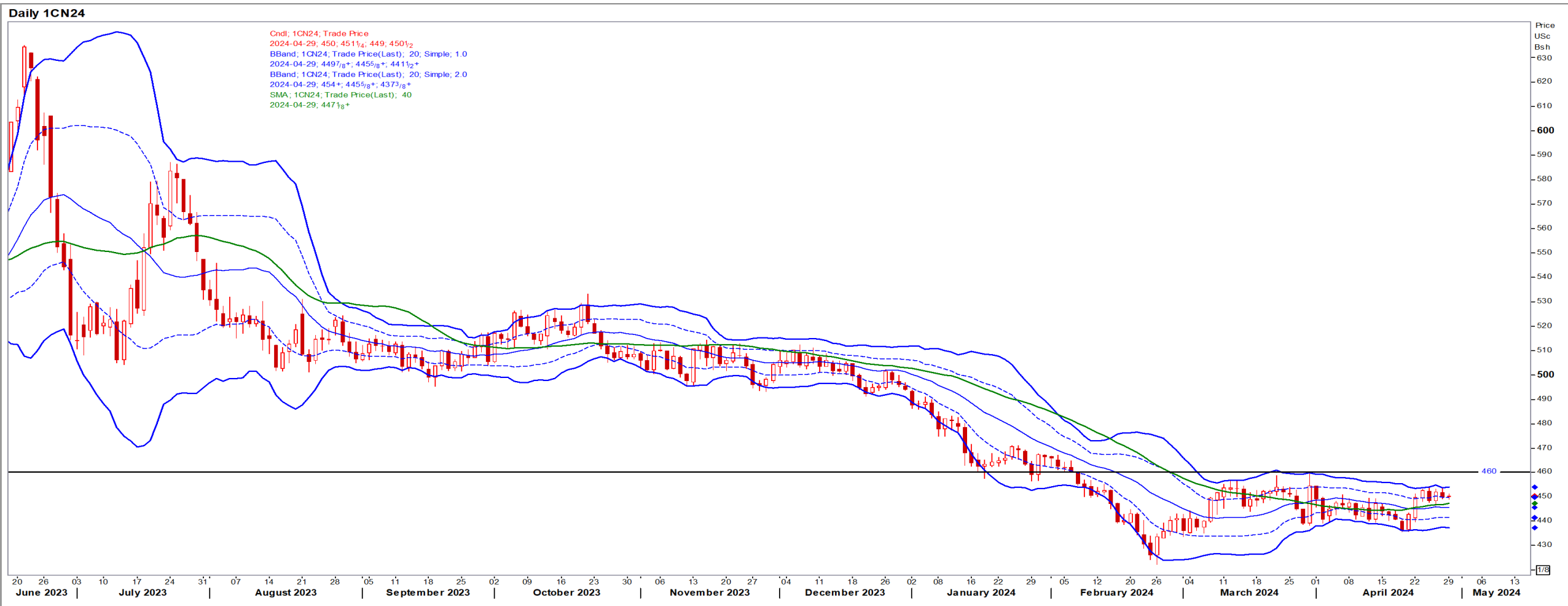
- USD surged on Friday on inflation data that showed no signs of easing, affirming expectations that the Fed will delay cutting rates – Reuters News.
- Weaker than R18.78 means the ZAR remains under pressure against a sideways to bullish USD.



USA Corn

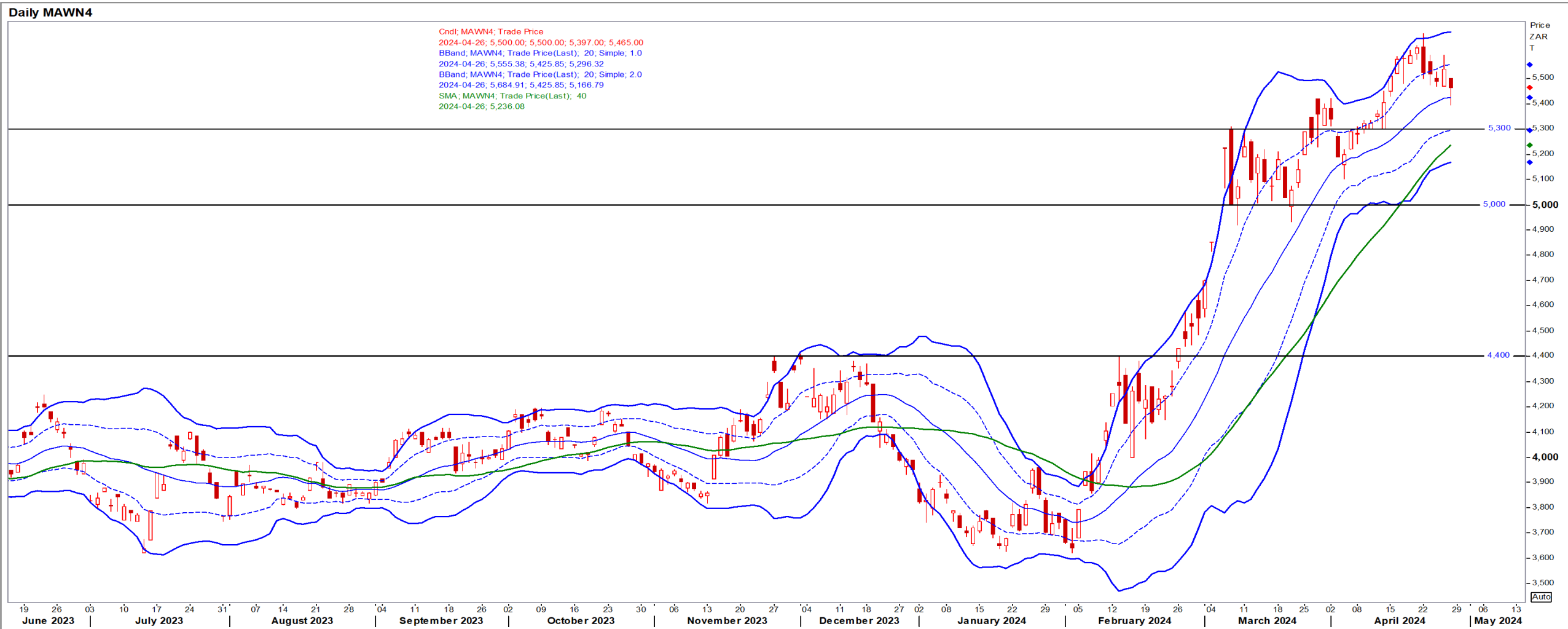
Jul24 Daily: Contract status bearish < \$4.60

- Corn turned lower Friday on profit-taking and market participants watching weather impacts on the pace of spring planting in the Midwest – Reuters News.



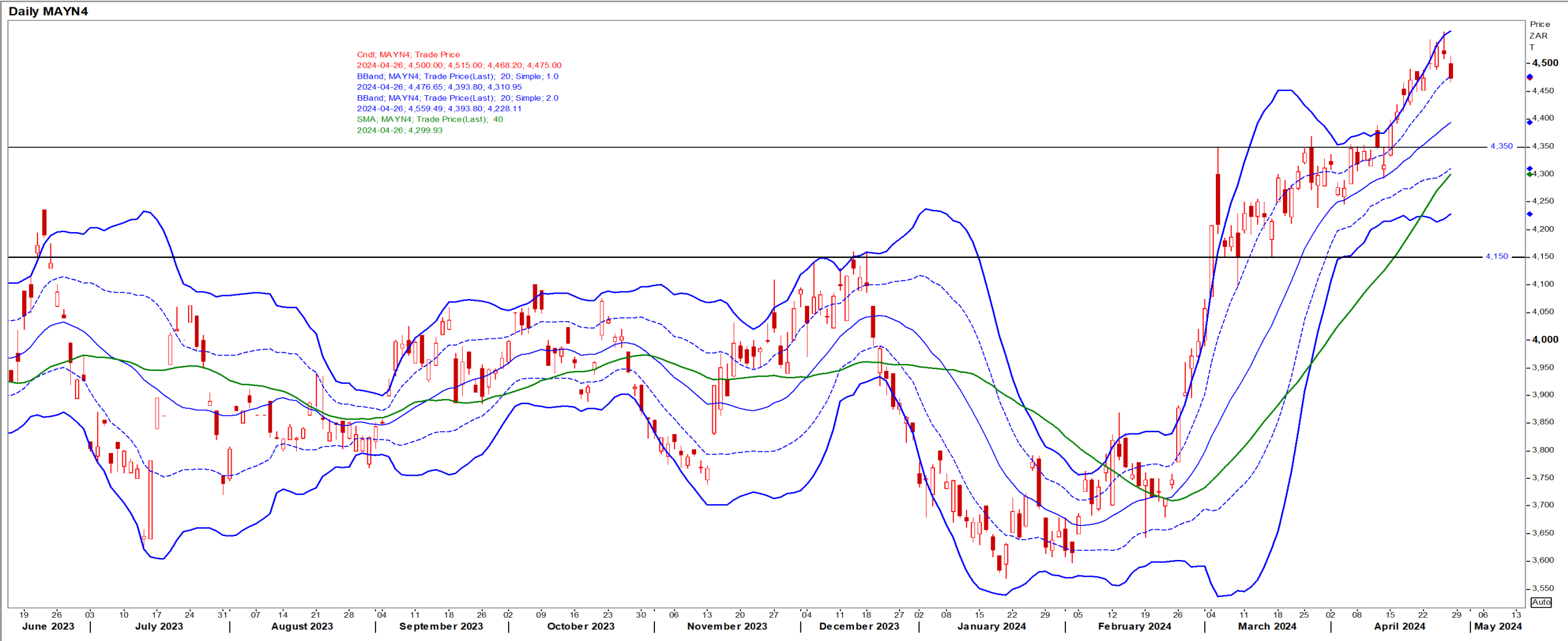
White Maize

Jul24 Daily: Contract status very bullish > R5300



Yellow Maize

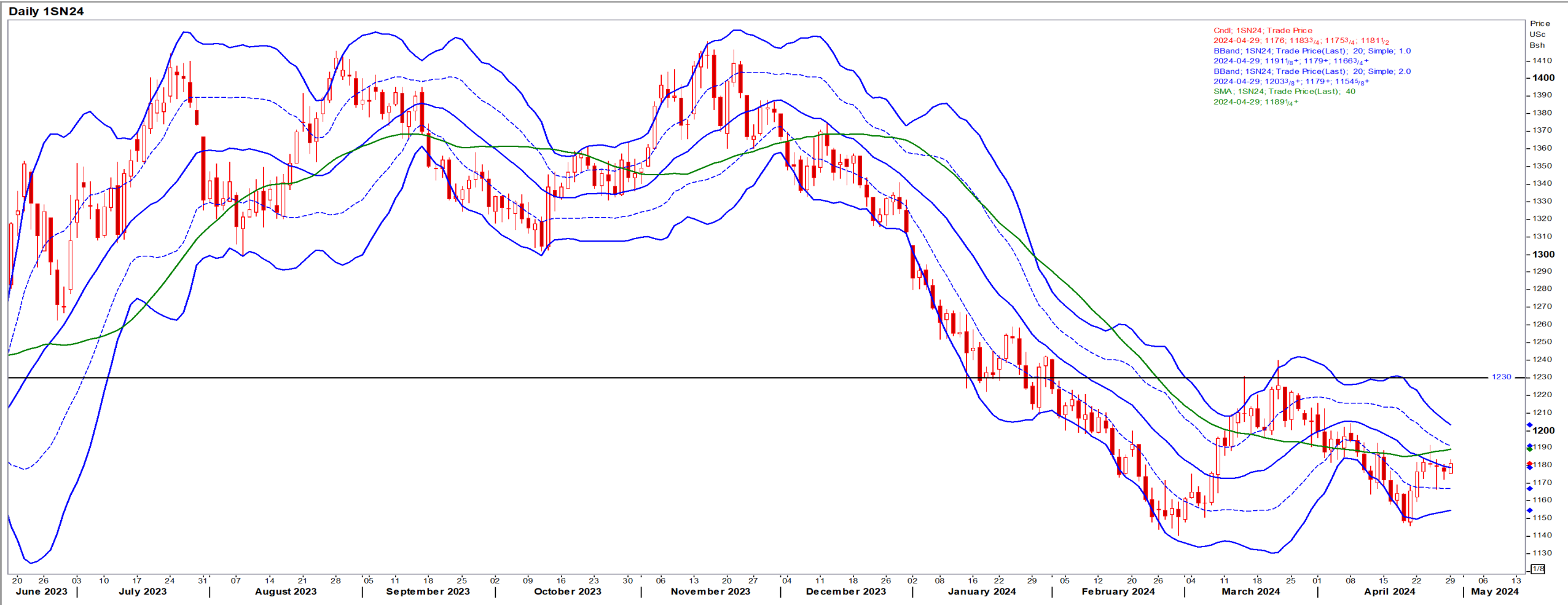
Jul24 Daily: Contract status bullish > R4350



USA Soya

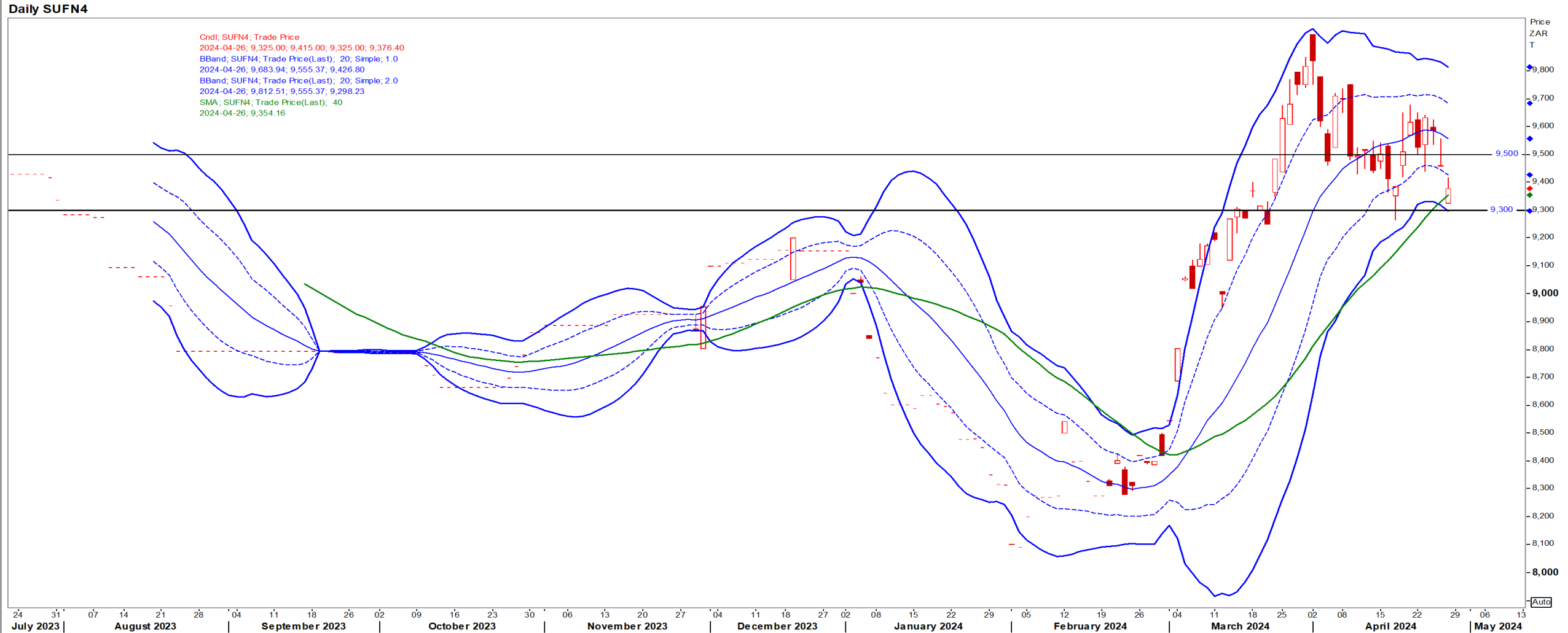
Jul24 Daily: Contract status very bearish < \$12.30

- Funds were net sellers of corn, soybean and soymeal futures on Friday and net buyers of wheat, but net even in soyoil – Reuters News.



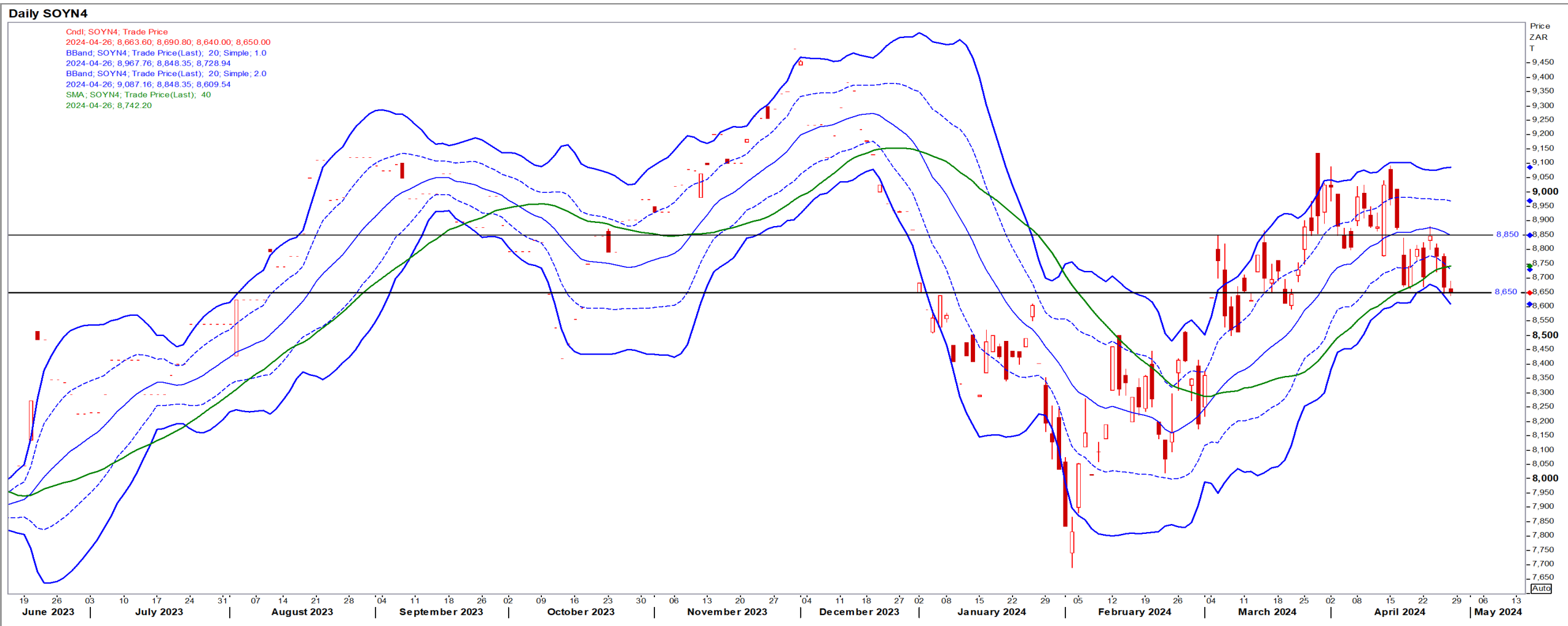
Suns

Jul24 Daily: Contract status neutral R9500/R9300



SA Soya

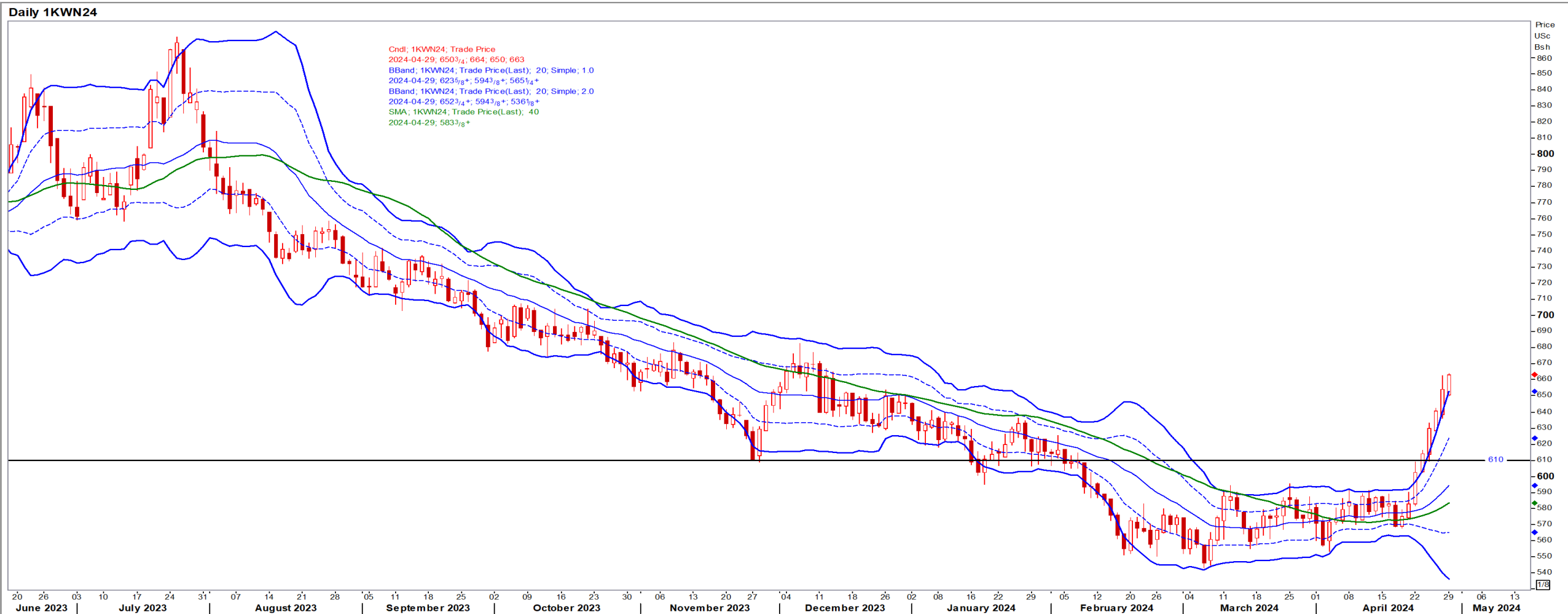
Jul24 Daily: Contract status neutral R8850/R8650



US KANSAS Wheat

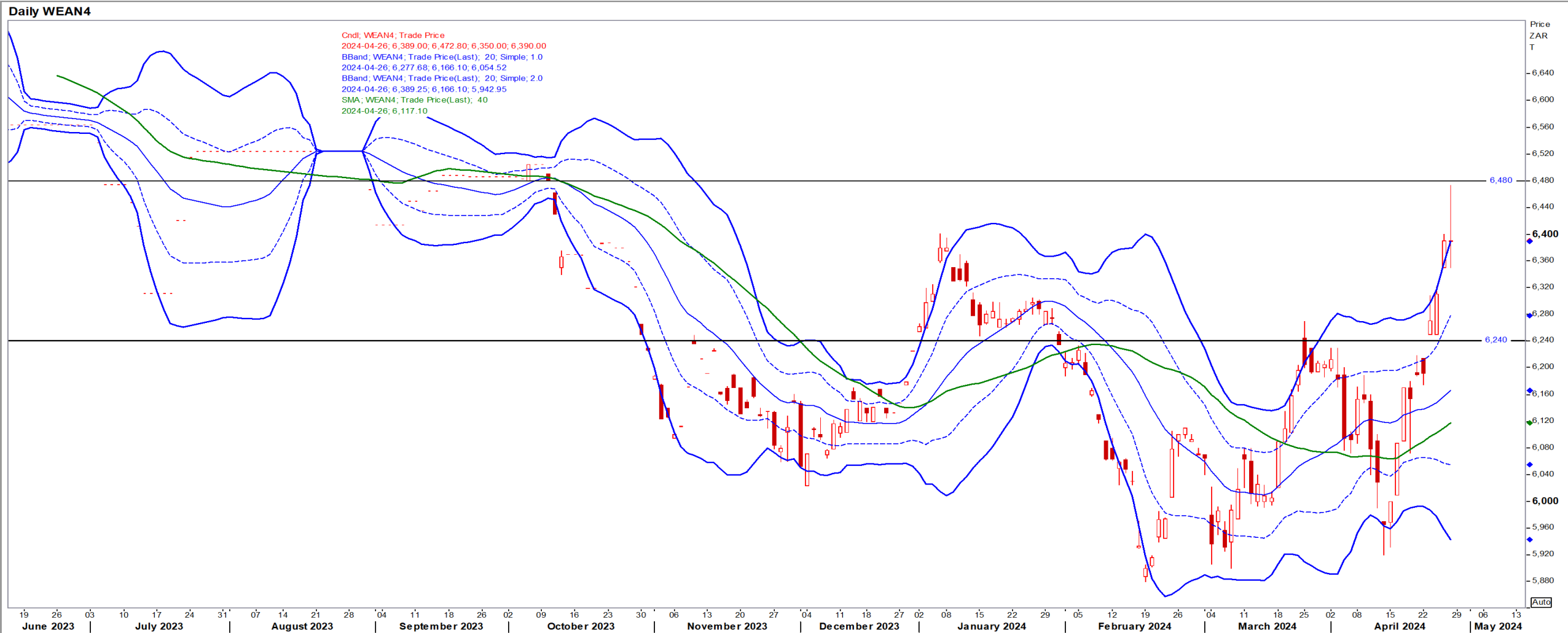
Jul24 Daily: Contract status bullish > \$6.10

- Dry weather south Russia and central US, as well as freezing weather in Europe, continued to propel short covering – Reuters News.



SA Wheat

Jul24 Daily: Contract status very bullish > R6240



Weather

US Medium-term Precipitation Forecasts

Precipitation Forecasts

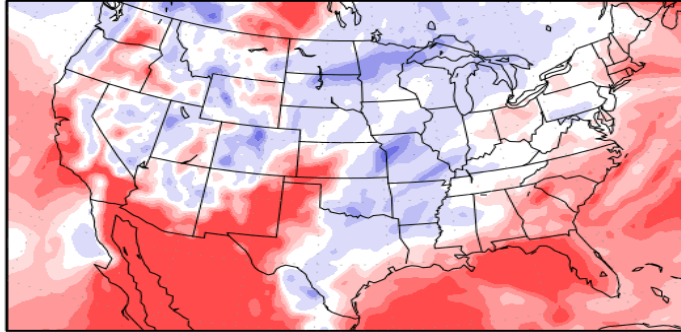
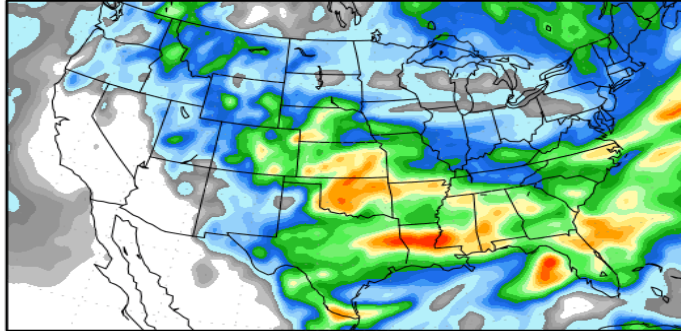
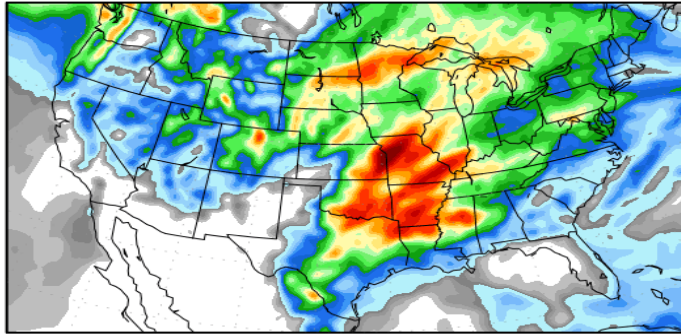
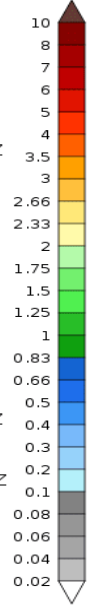
Precipitation (in)
during the period:

Fri, 26 APR 2024 at 00Z
-to-
Sat, 04 MAY 2024 at 00Z

Sat, 04 MAY 2024 at 00Z
-to-
Sun, 12 MAY 2024 at 00Z

Precipitation (% of normal)
during the first period:

Fri, 26 APR 2024 at 00Z
-to-
Sat, 04 MAY 2024 at 00Z



Precipitation forecasts from the National Centers for Environmental Prediction.
Normal rainfall derived from Xie-Arkin (CMAP) Monthly Climatology for 1979-2003.
Forecast Initialization Time: 00Z26APR2024

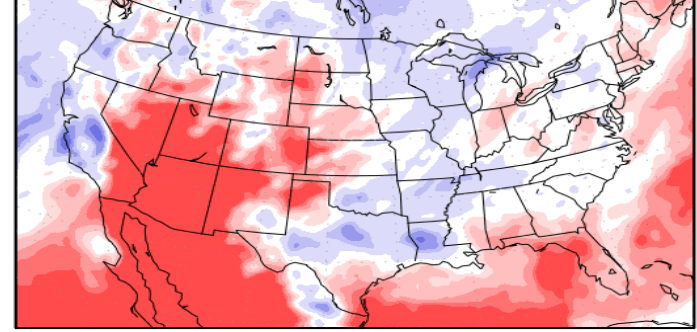
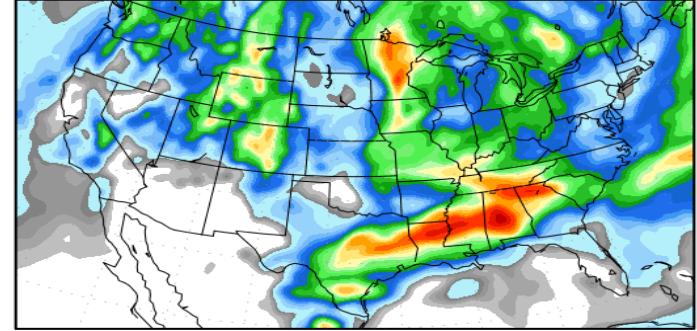
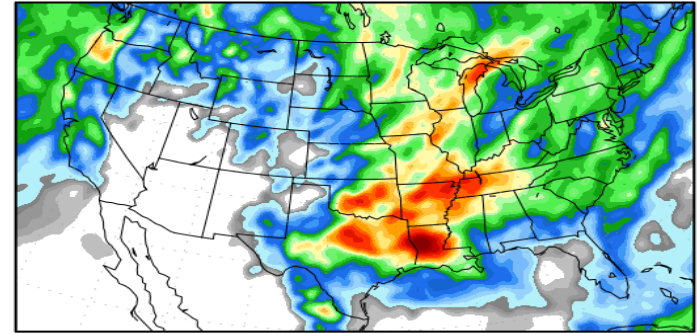
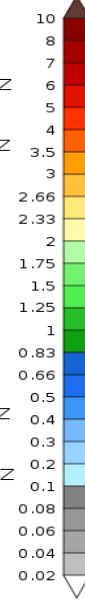
GrADS/COLA

Precipitation Forecasts

Precipitation (in)
during the period:

Mon, 29 APR 2024 at 00Z
-to-
Tue, 07 MAY 2024 at 00Z

Tue, 07 MAY 2024 at 00Z
-to-
Wed, 15 MAY 2024 at 00Z



Precipitation forecasts from the National Centers for Environmental Prediction.
Normal rainfall derived from Xie-Arkin (CMAP) Monthly Climatology for 1979-2003.
Forecast Initialization Time: 00Z29APR2024

GrADS/COLA