

Daily market
Report
30 Apr 24



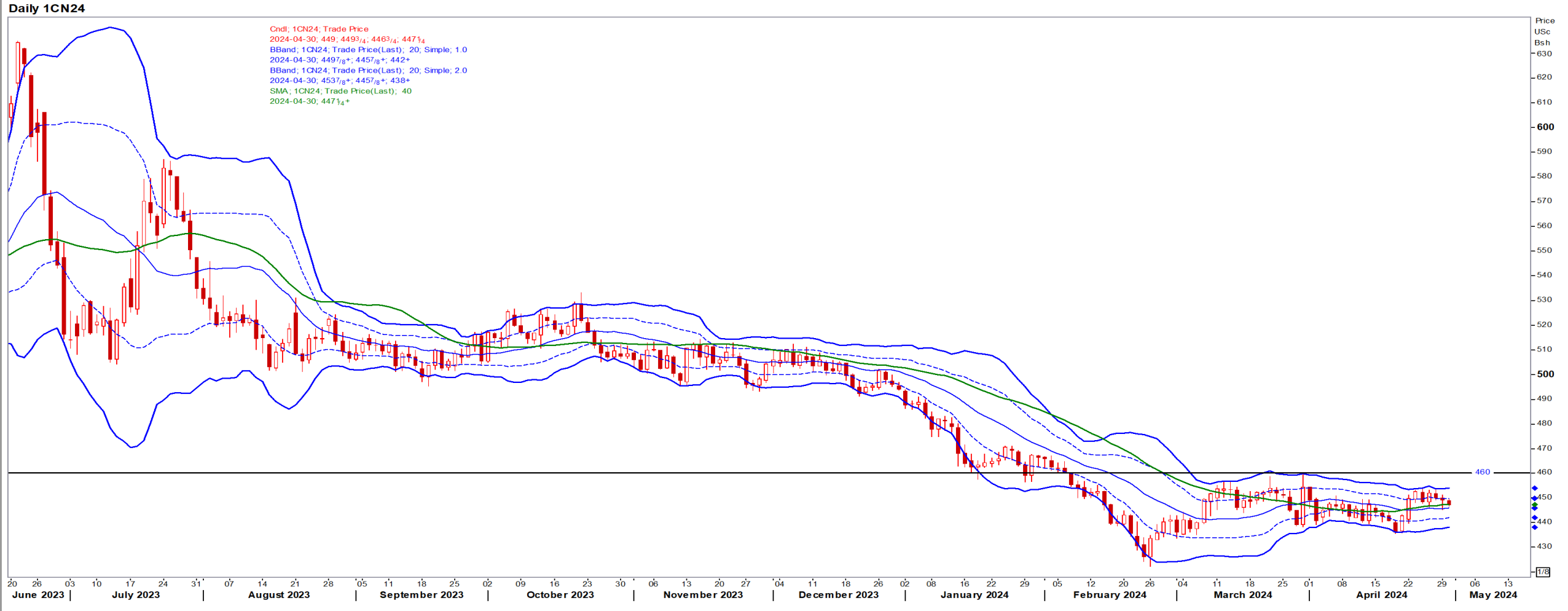
Parity Movements (implied price moves)

USA Movement (Overnight)	Cents	Currencies	30-Apr-24	07:50:18	
CORN CBOT (Jul24)	447.00	-3.00	R/\$ last	18.6944	-0.0653
SOY CBOT (Jul24)	1,173.00	-9.00	Euro=	1.0696	-0.0017
W1 CBOT (Jul24)	600.75	-11.50	GOLD	2,323	-20.3600
W1 KCBT (Jul24)	642.75	-10.50	BRENT	88.2	-0.79
BlackSea Weat (Near)	204.00	0.00			
Index Change					
Maize (Jul24)	3,290	R -33.65	Wheat CBOT (Jul24)	4,127	-R93.68
Soya (Jul24)	8,057	R -90.17	Wheat Kansas (Jul24)	4,415	R -87.80
BlackSea Weat Near	3,814	R -13.32	RAND EFFECT ON WHEAT PARITY	4,487	-R 15.67

USA Corn

Jul24 Daily: Contract status bearish < \$4.60

- Corn ended lower on Monday as falling wheat and crude oil prices added bearish sentiment to the market – Reuters News.

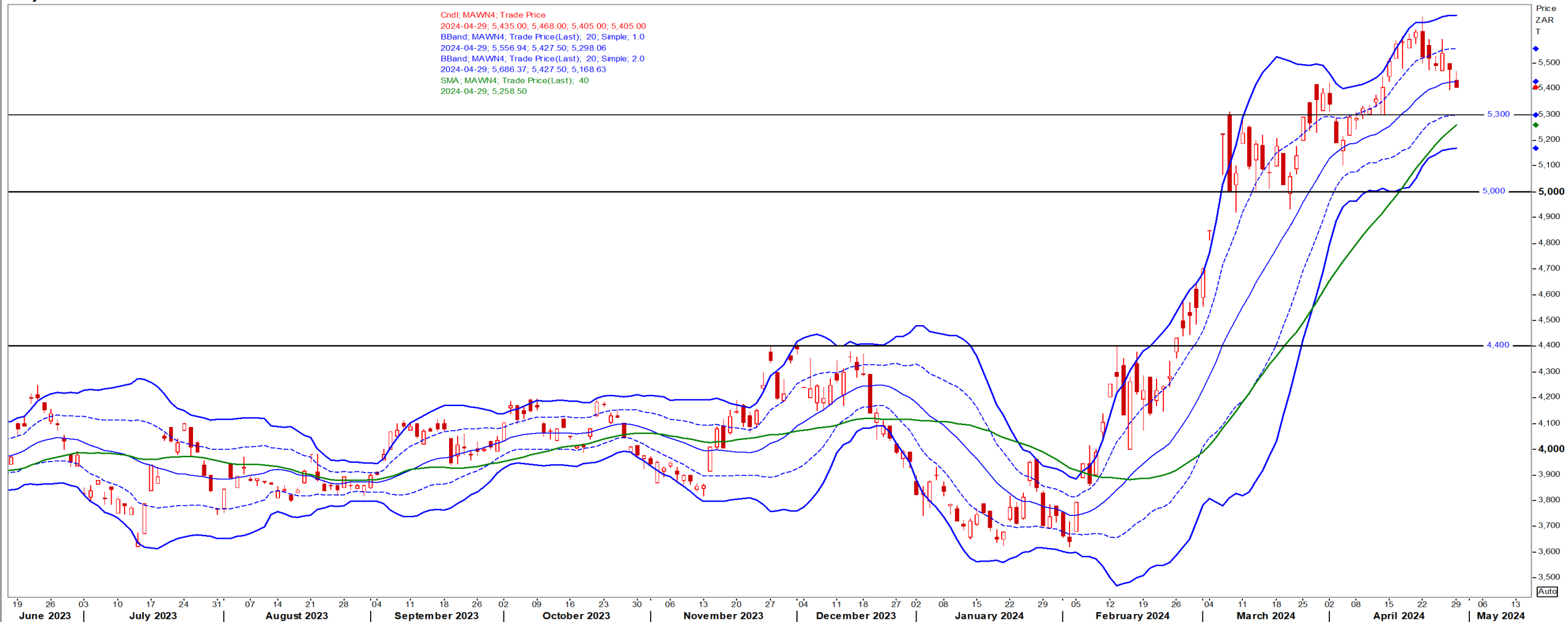


White Maize

Jul24 Daily: Contract status very bullish > R5300

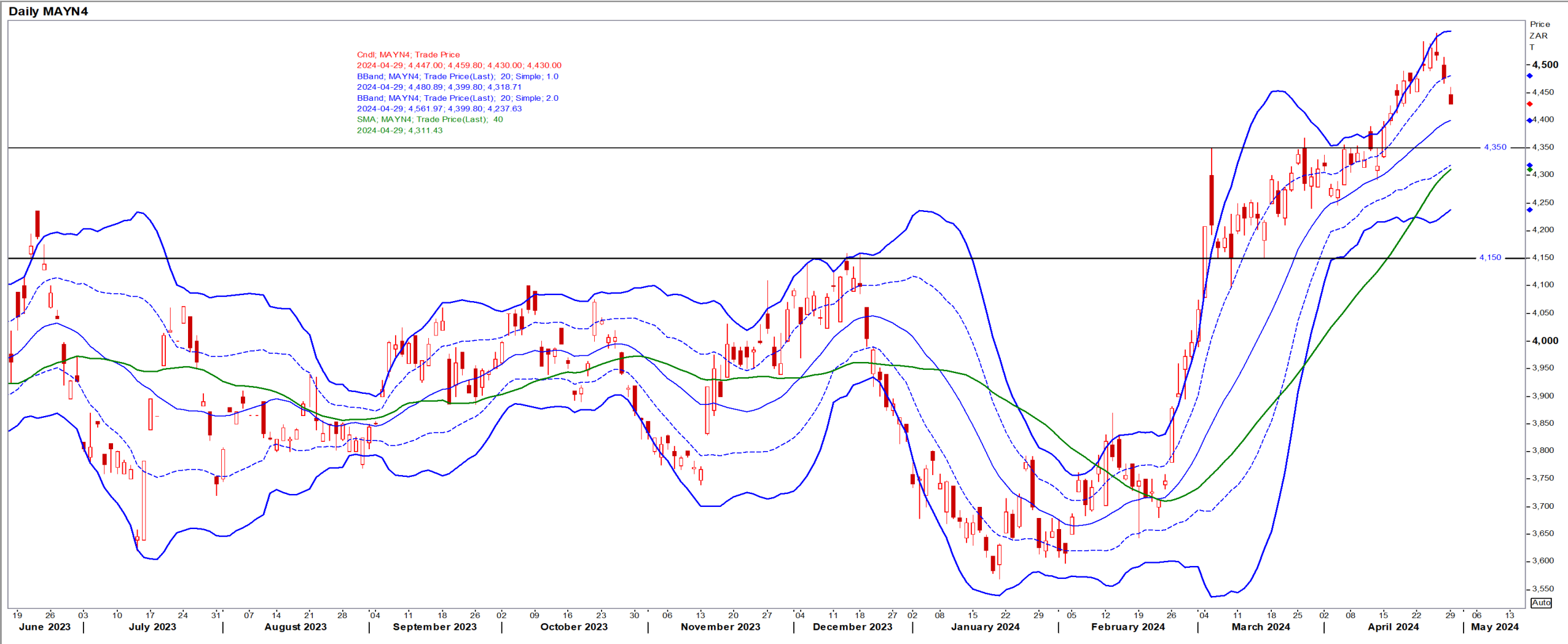
Daily MAWN4

Cndt; MAWN4; Trade Price
2024-04-29; 5,435.00; 5,468.00; 5,405.00; 5,405.00
BBand; MAWN4; Trade Price(Last); 20; Simple; 1.0
2024-04-29; 5,556.94; 5,427.50; 5,298.06
BBand; MAWN4; Trade Price(Last); 20; Simple; 2.0
2024-04-29; 5,686.37; 5,427.50; 5,168.63
SMA; MAWN4; Trade Price(Last); 40
2024-04-29; 5,258.50



Yellow Maize

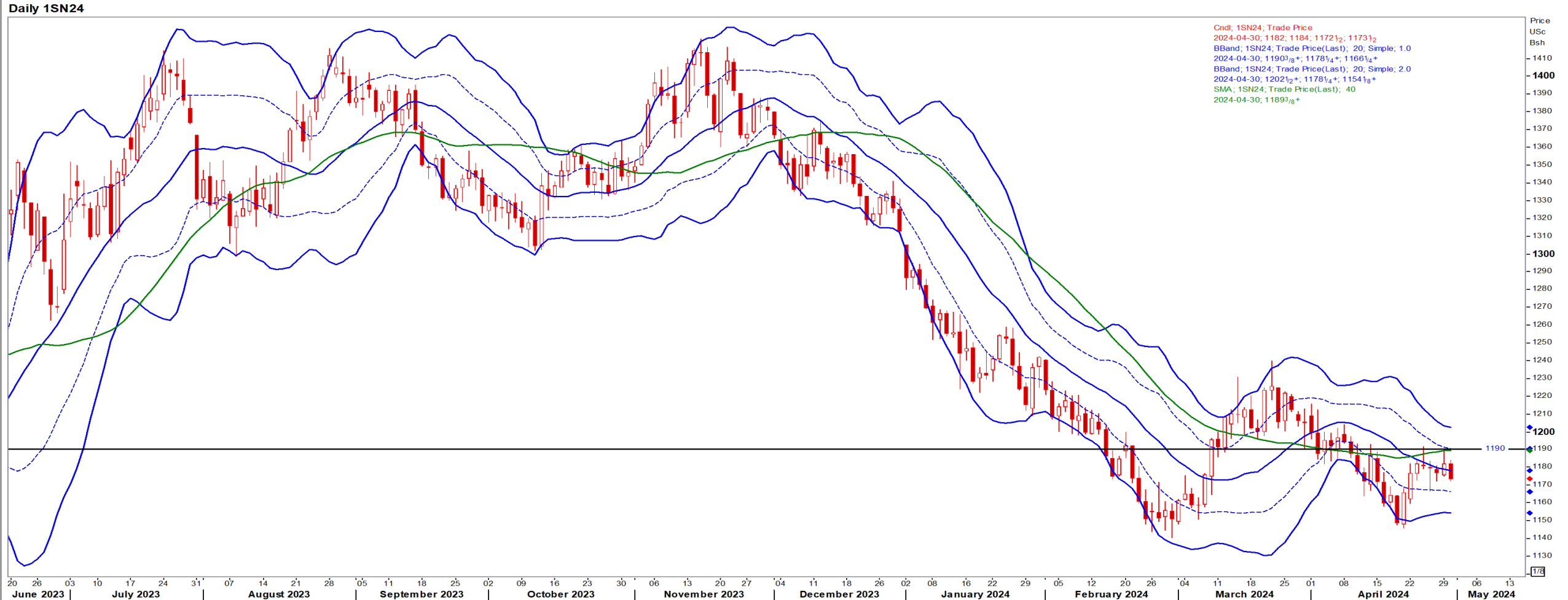
Jul24 Daily: Contract status bullish > R4350



USA Soya

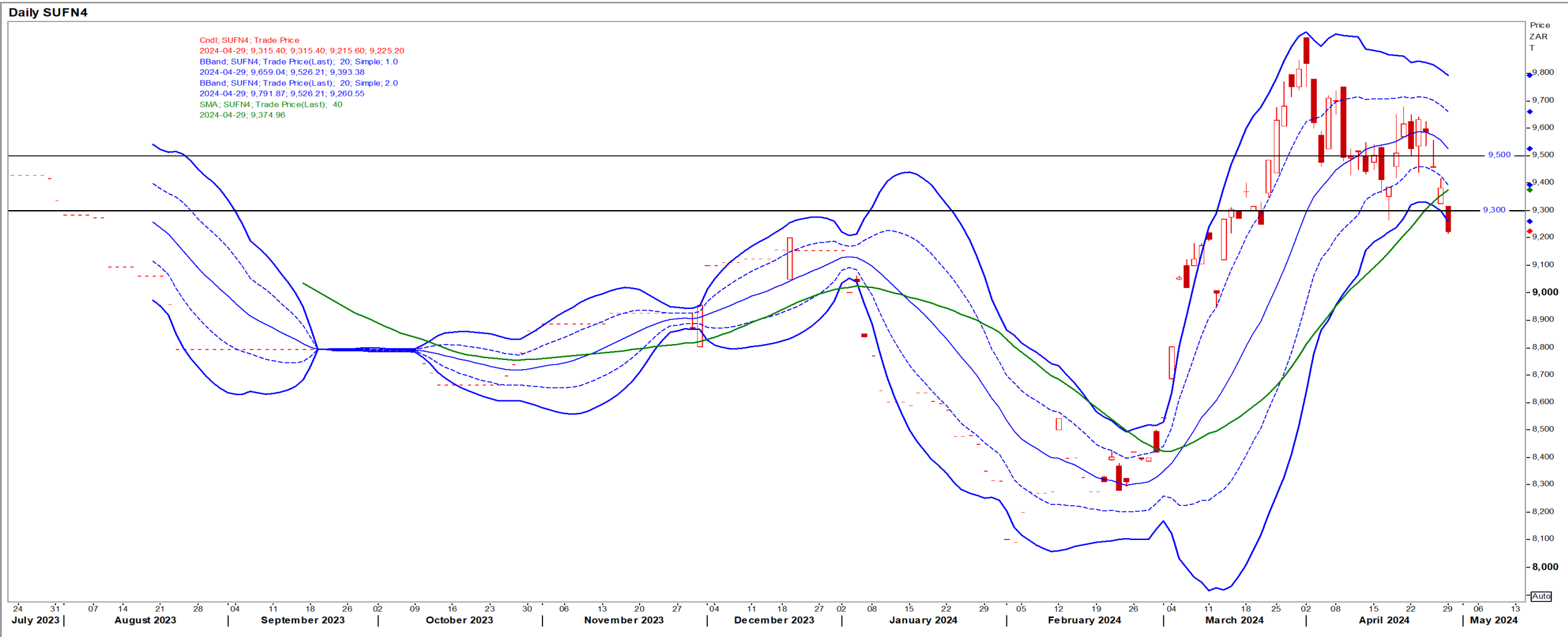
Jul24 Daily: Contract status bearish < \$11.90

- Funds were net buyers of soymeal and soybean futures on Monday and net sellers of wheat, corn and soyoil futures – Reuters News.



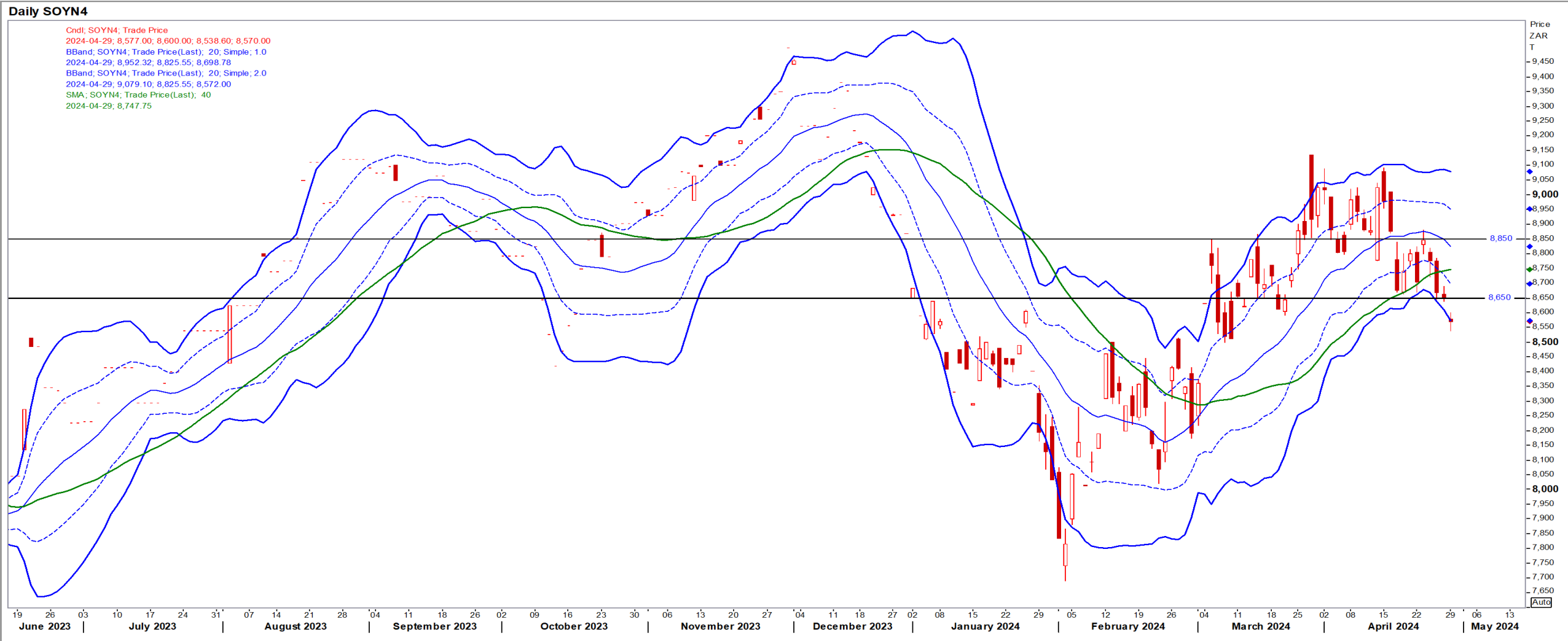
Suns

Jul24 Daily: Contract status bearish < R9300



SA Soya

Jul24 Daily: Contract status bearish < R8650



US KANSAS Wheat

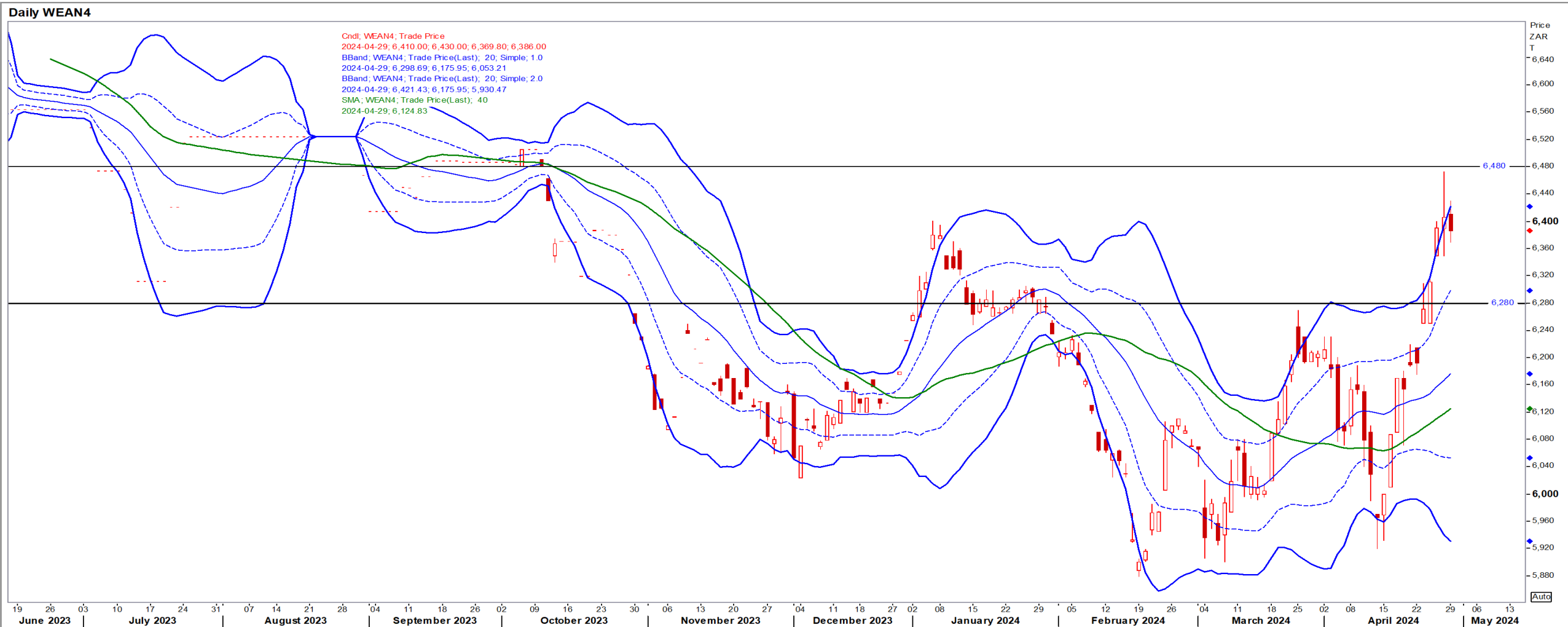
Jul24 Daily: Contract status bullish > \$6.10

- Wheat fell further from last week's four-month highs as forecasts for rain in key Russian cropping regions eased supply concerns – Reuters News.



SA Wheat

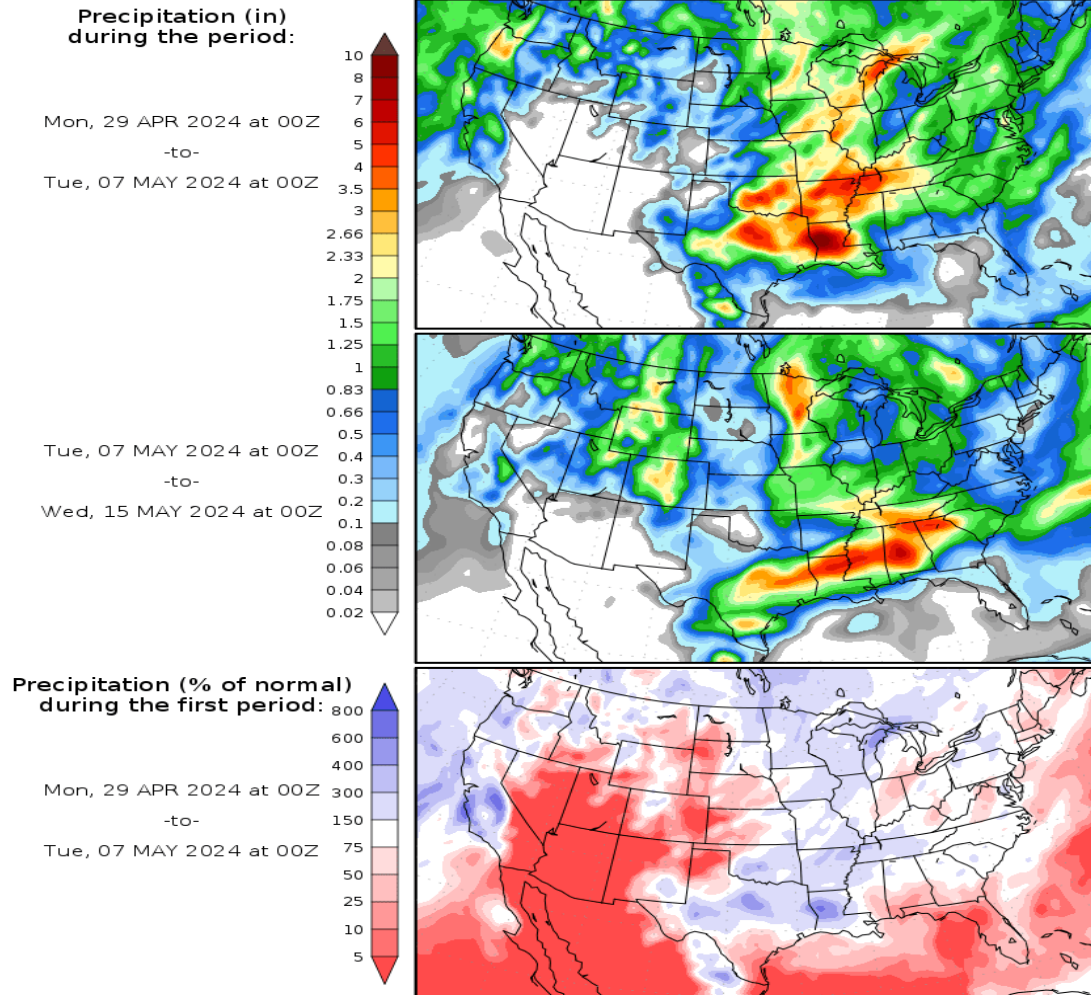
Jul24 Daily: Contract status very bullish > R6280



Weather

US Medium-term Precipitation Forecasts

Precipitation Forecasts



Precipitation forecasts from the National Centers for Environmental Prediction.
Normal rainfall derived from Xie-Arkin (CMAP) Monthly Climatology for 1979-2003.
Forecast Initialization Time: 00Z29APR2024