

Daily market
Report
21 May 24



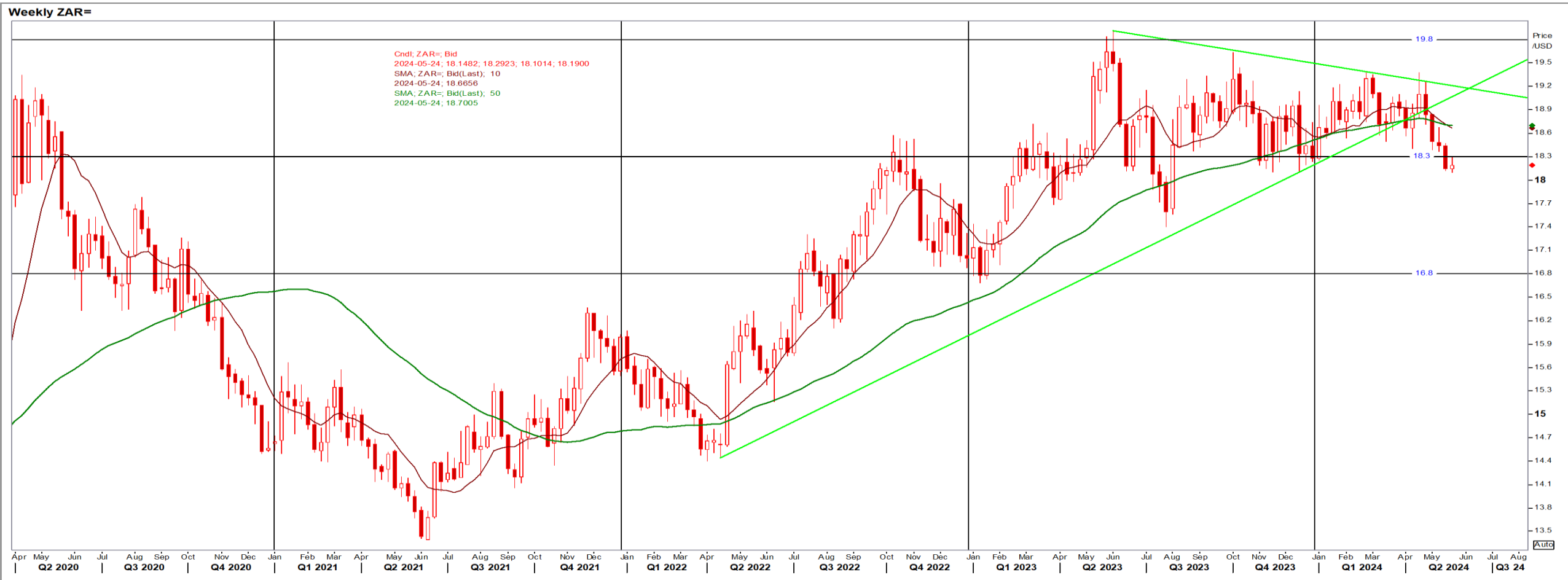
Parity Movements (implied price moves)

USA Movement (Overnight)	Cents	Currencies	21-May-24	07:06:59	
CORN CBOT (Jul24)	456.00	1.25	R/\$ last	18.1928	0.0063
SOY CBOT (Jul24)	1,242.75	8.75	Euro=	1.0859	-0.0008
W1 CBOT (Jul24)	686.50	18.50	GOLD	2,414	-27.1923
W1 KCBT (Jul24)	693.00	14.50	BRENT	83.2	-0.58
BlackSea Weat (Near)	227.00	0.00			
Index Change					
Maize (Jul24)	3,266	R 10.08	Wheat CBOT (Jul24)	4,589	R125.21
Soya (Jul24)	8,307	R 61.34	Wheat Kansas (Jul24)	4,633	R 98.50
BlackSea Weat Near	4,130	R 1.43	RAND EFFECT ON WHEAT PARITY	4,536	R 1.57

South African Rand (ZAR)

USD/ZAR Weekly: Bullish < R18.70

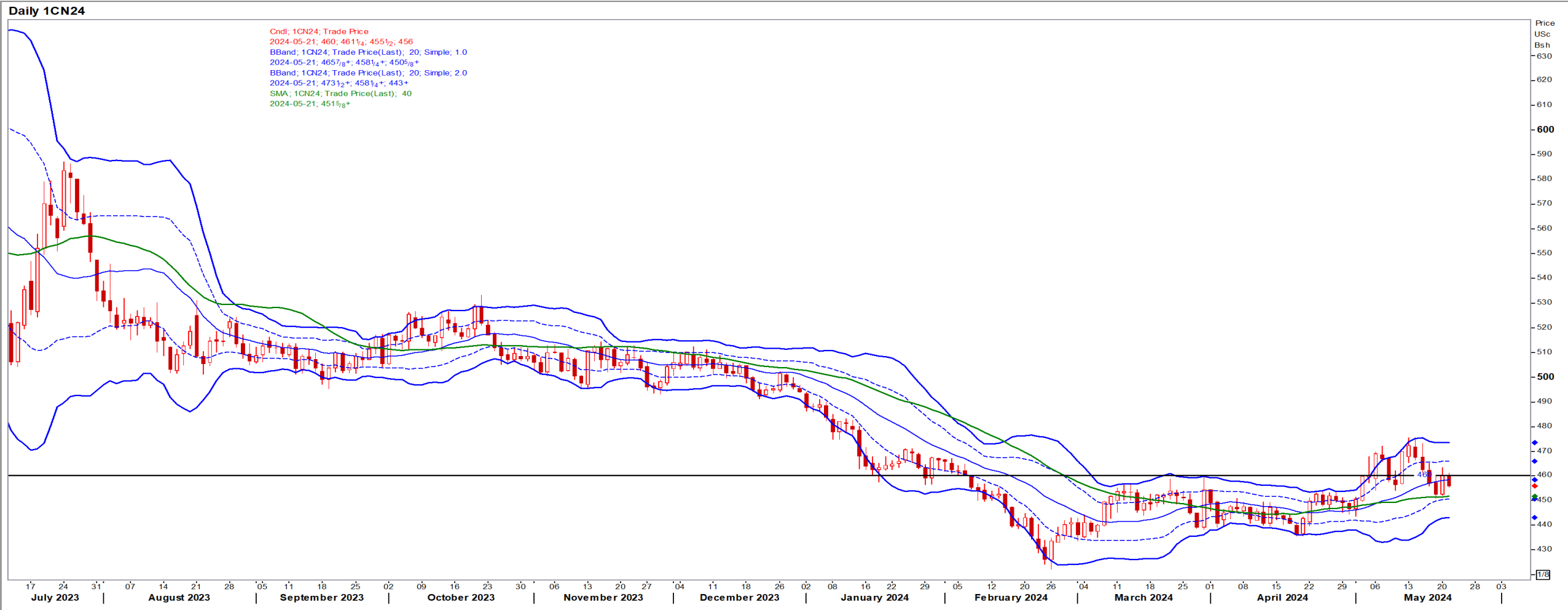
- ZAR weakened against a buoyant dollar after cautious [rate] comments by a Fed official propped up the USD – Reuters News.
- Stronger than R18.70 the ZAR is in bullish mode, but the overall LT picture is ZAR bearish.



USA Corn

Jul24 Daily: Contract status bearish < \$4.60

- Corn ended higher on Monday on concerns about unfavourably wet weather during the ongoing US planting season – Reuters News.

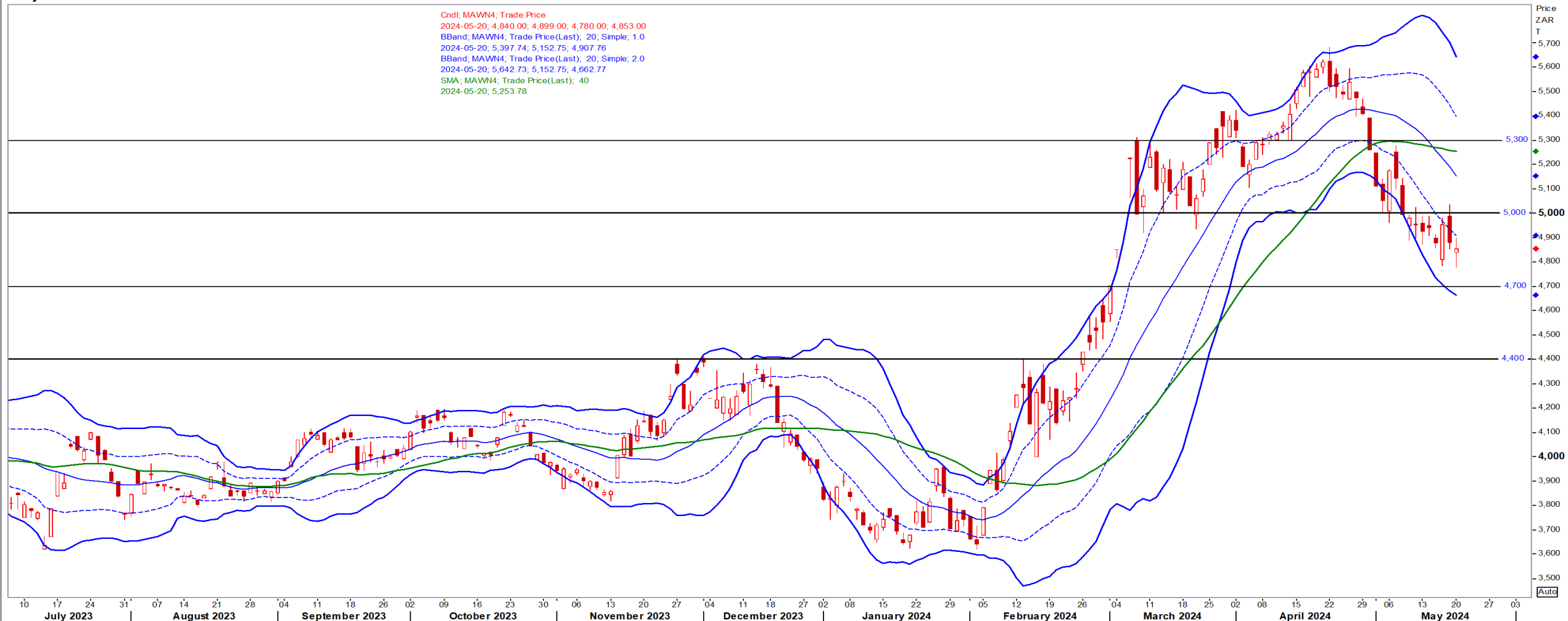


White Maize

Jul24 Daily: Contract status bearish < R5000

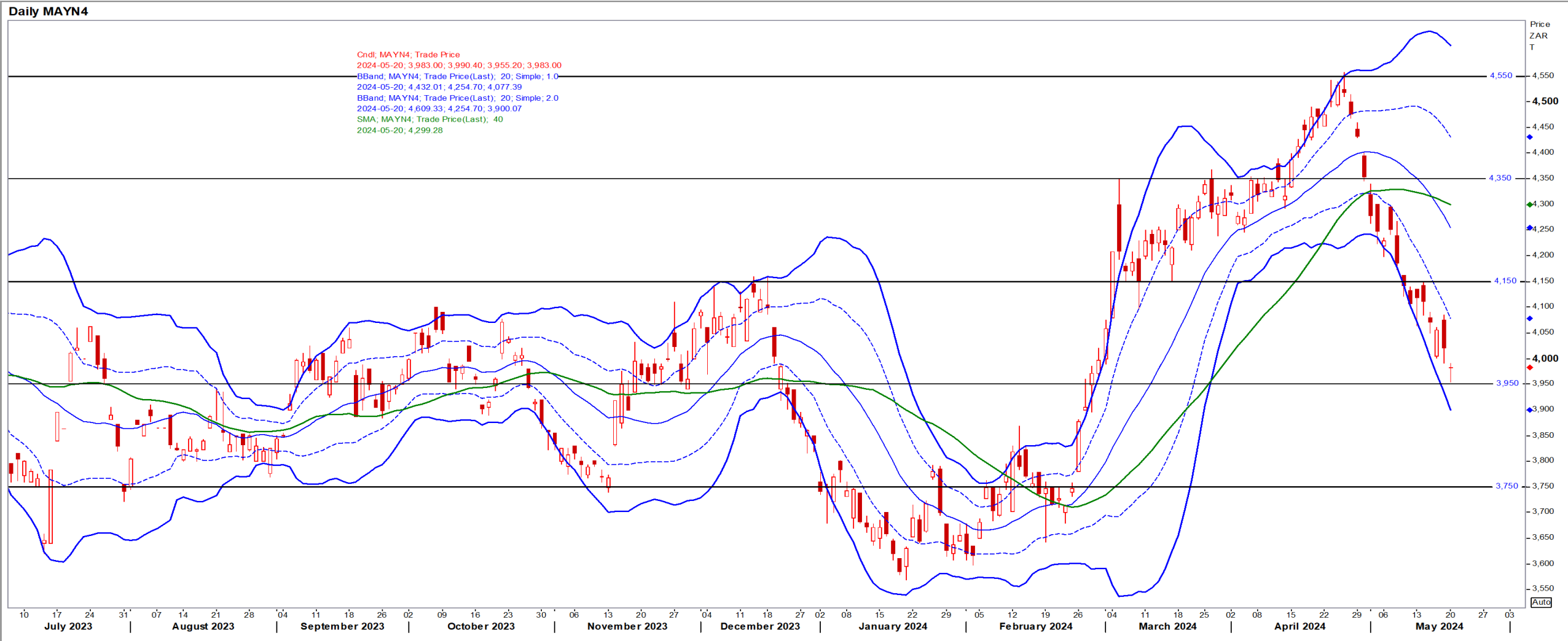
Daily MAWN4

Cndt, MAWN4; Trade Price
2024-05-20; 4,840.00; 4,899.00; 4,780.00; 4,853.00
BBand; MAWN4; Trade Price(Last); 20; Simple; 1.0
2024-05-20; 5,397.74; 5,152.75; 4,907.76
BBand; MAWN4; Trade Price(Last); 20; Simple; 2.0
2024-05-20; 5,642.73; 5,152.75; 4,662.77
SMA; MAWN4; Trade Price(Last); 40
2024-05-20; 5,253.78



Yellow Maize

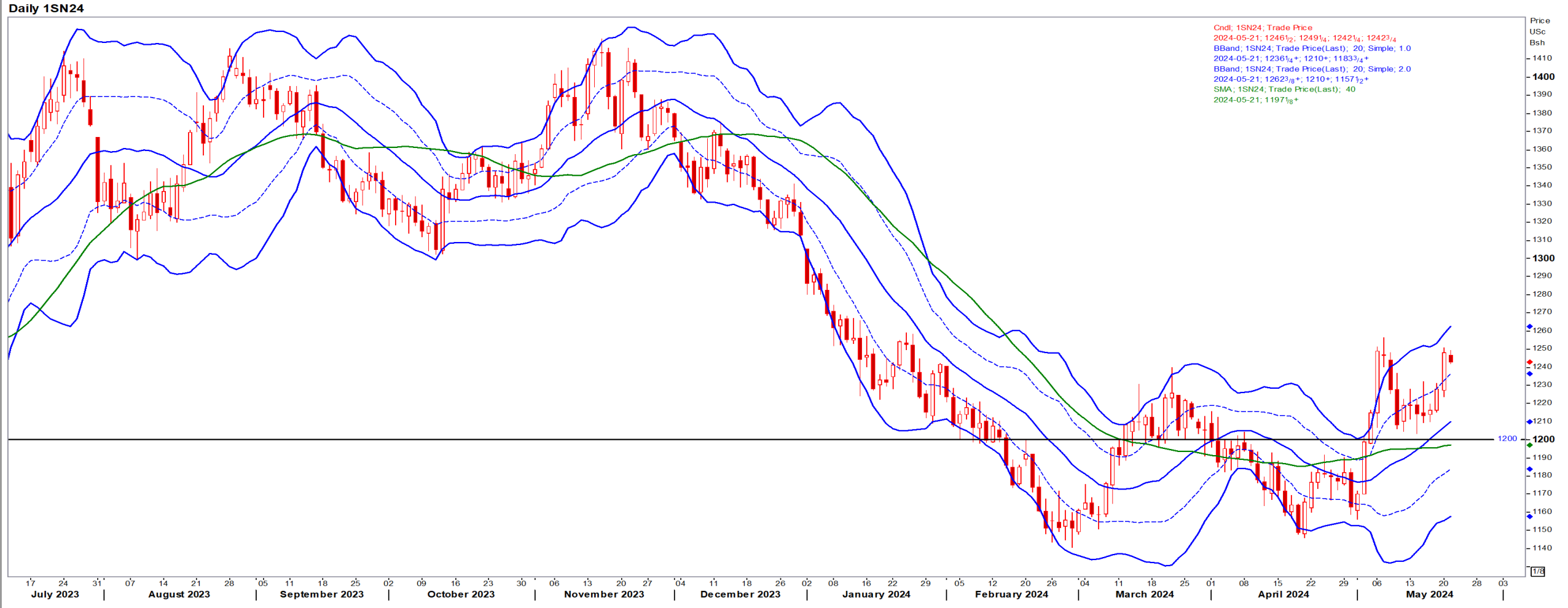
Jul24 Daily: Contract status very bearish < R4150



USA Soya

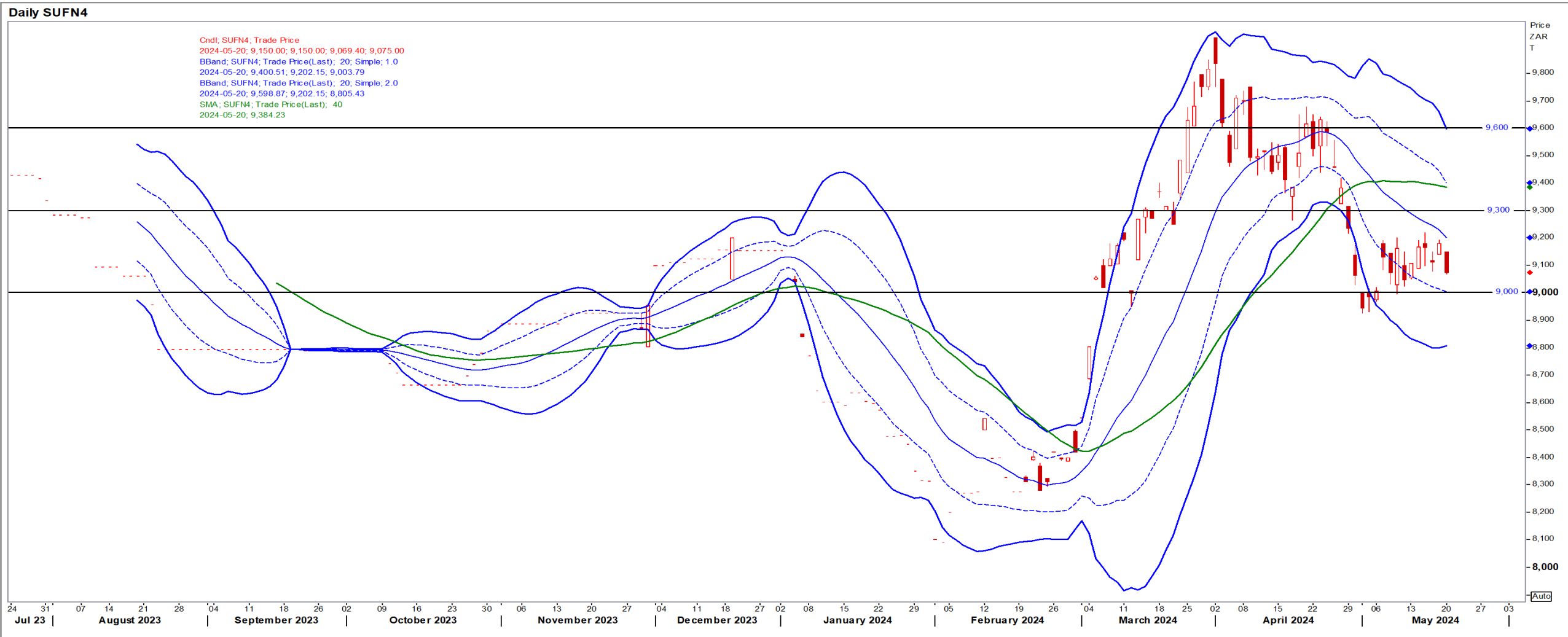
Jul24 Daily: Contract status bullish > \$12.00

- Soybeans closed higher on Monday as flooding in top exporter Brazil continued to fuel worries about crop losses – Reuters News.



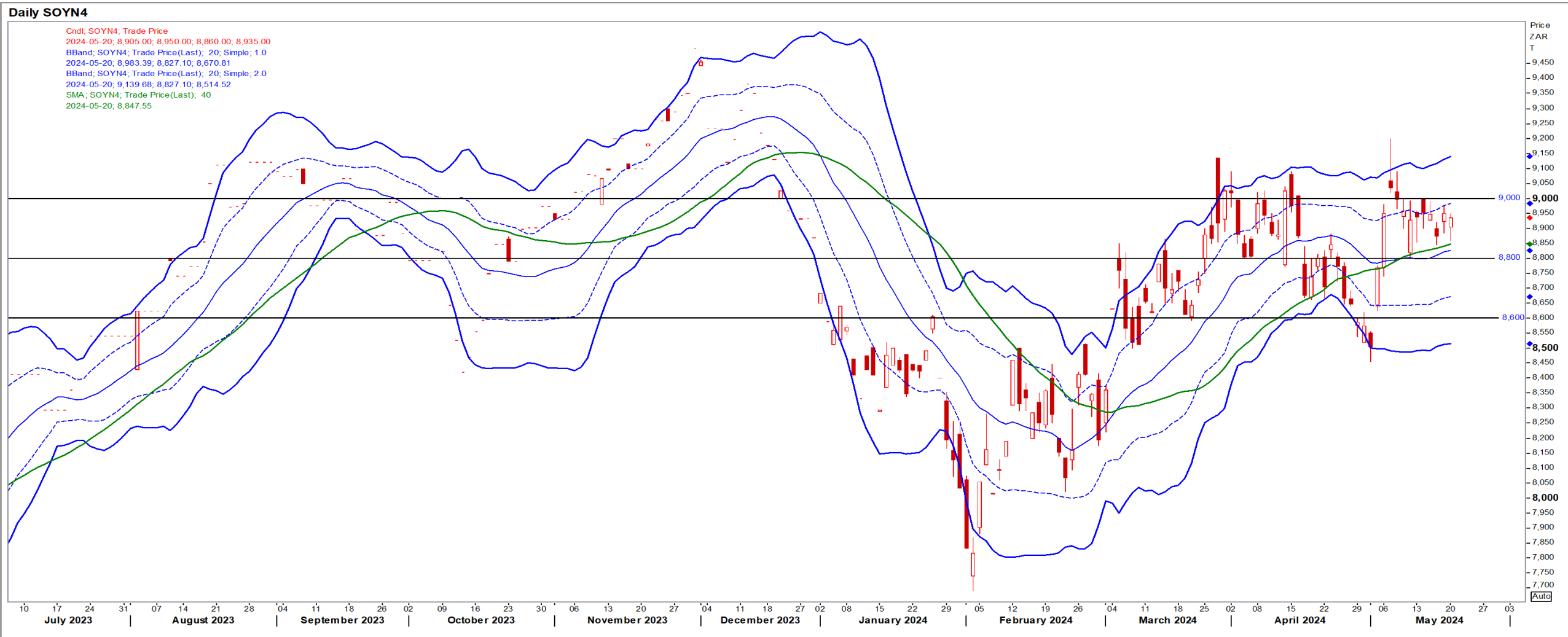
Suns

Jul24 Daily: Contract status bearish < R9300



SA Soya

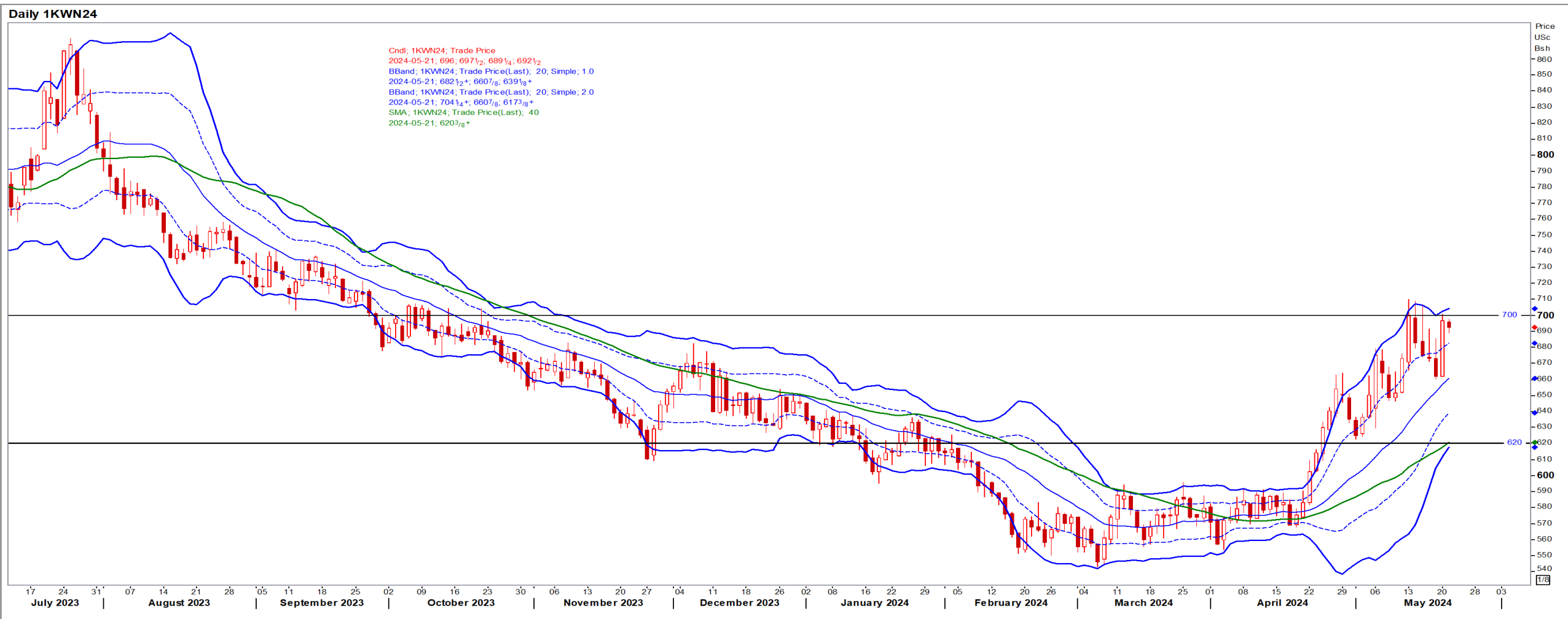
Jul24 Daily: Contract status bullish > R8800



US KANSAS Wheat

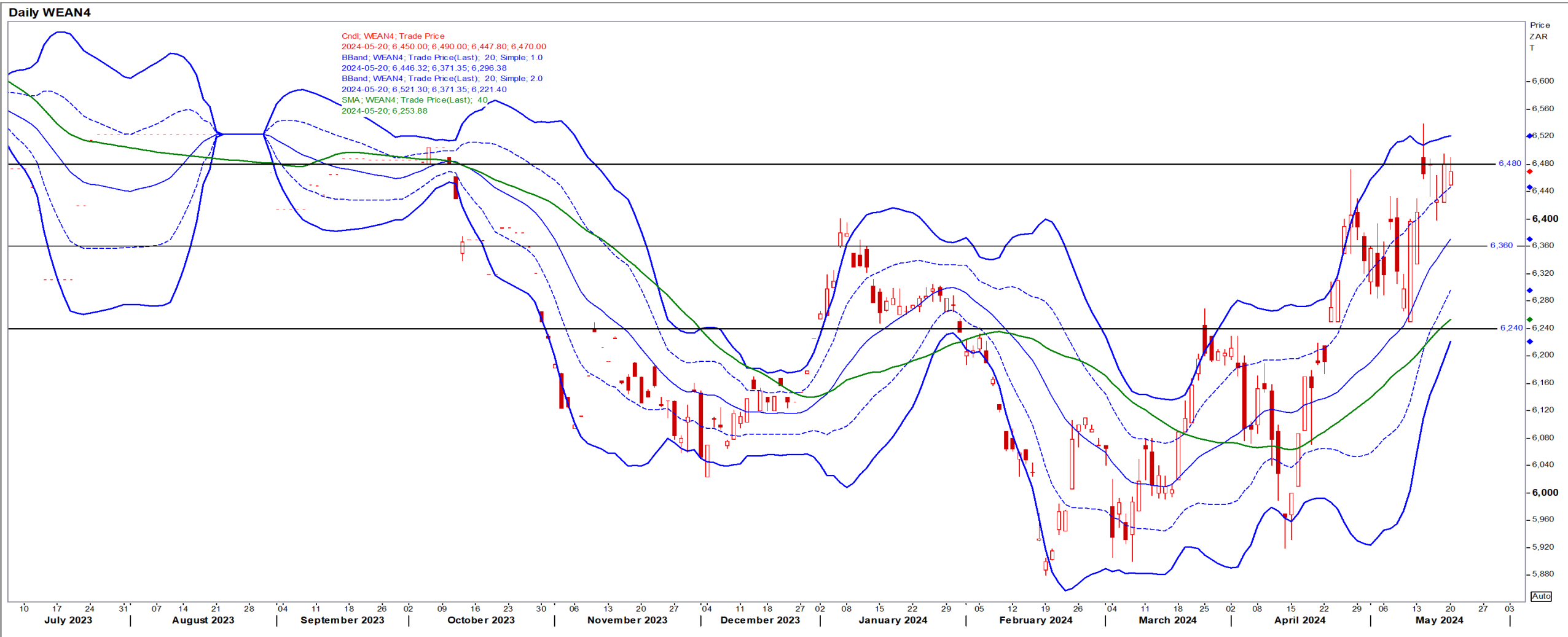
Jul24 Daily: Contract status very bullish > \$6.20

- Wheat closed higher Monday in the biggest one-day rally since July on concerns over poor crop weather in the Black Sea (frost) – Reuters News.



SA Wheat

Jul24 Daily: Contract status very bullish > R6360



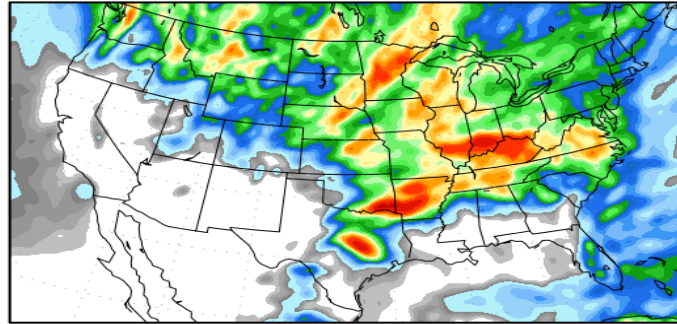
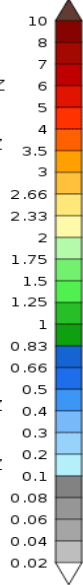
Weather

US Medium-term Precipitation Forecasts

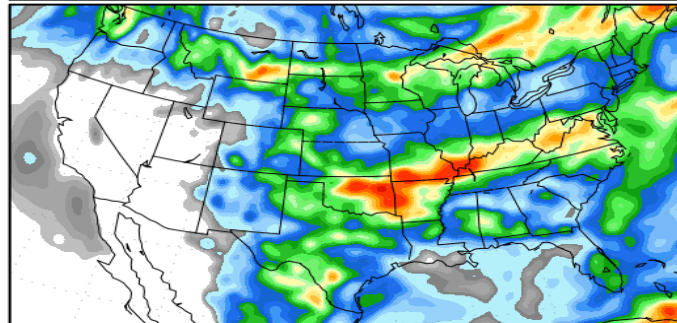
Precipitation Forecasts

Precipitation (in)
during the period:

Mon, 20 MAY 2024 at 00Z
-to-
Tue, 28 MAY 2024 at 00Z

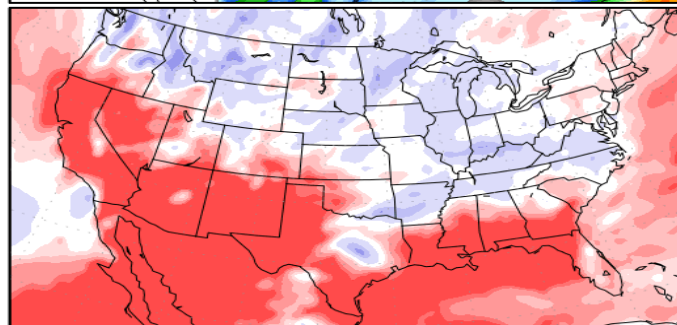
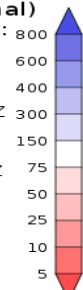


Tue, 28 MAY 2024 at 00Z
-to-
Wed, 05 JUN 2024 at 00Z



Precipitation (% of normal)
during the first period:

Mon, 20 MAY 2024 at 00Z
-to-
Tue, 28 MAY 2024 at 00Z



Precipitation forecasts from the National Centers for Environmental Prediction.
Normal rainfall derived from Xie-Arkin (CMAP) Monthly Climatology for 1979-2003.
Forecast Initialization Time: 00Z20MAY2024

GrADS/COLA