

Daily market  
Report  
22 May 24



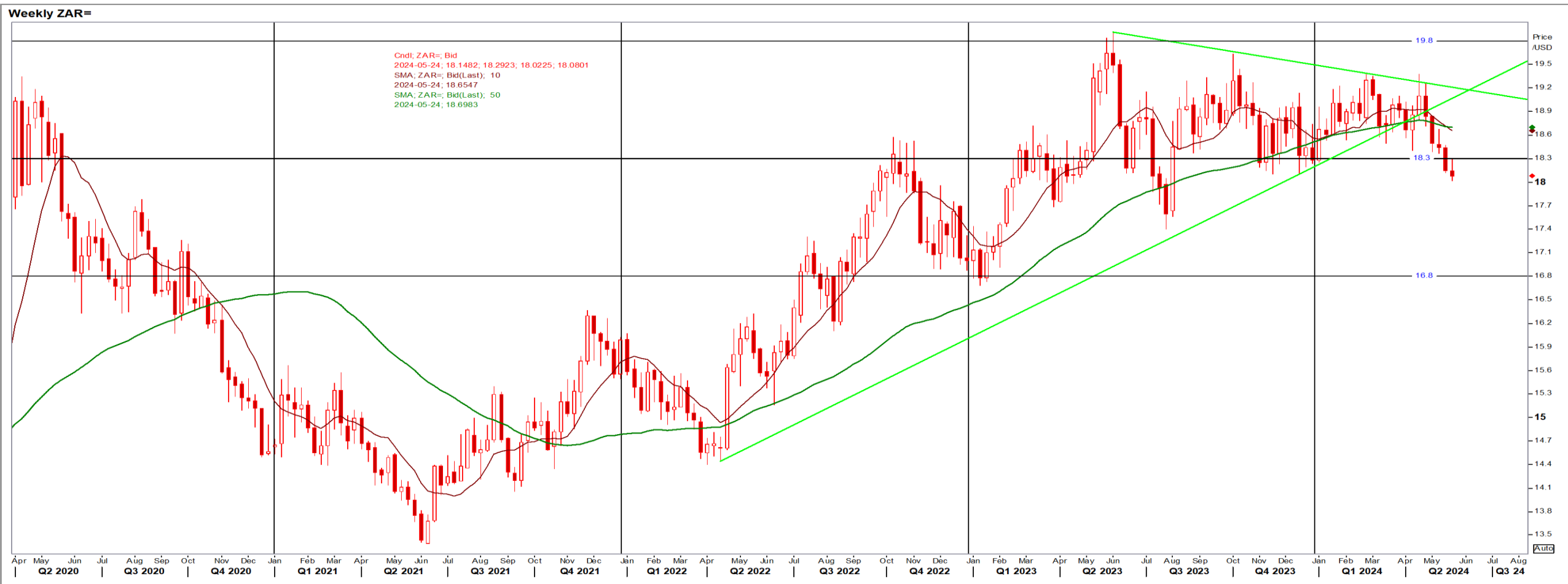
# Parity Movements (implied price moves)

USA Movement (Overnight)	Cents	Currencies	22-May-24	07:31:09	
<b>CORN CBOT (Jul24)</b>	462.00	6.50	<b>R/\$ last</b>	18.0766	-0.0733
<b>SOY CBOT (Jul24)</b>	1,240.75	5.25	<b>Euro=</b>	1.0852	-0.0019
<b>W1 CBOT (Jul24)</b>	710.25	25.50	<b>GOLD</b>	2,413	-4.0500
<b>W1 KCBT (Jul24)</b>	713.75	22.25	<b>BRENT</b>	82.26	-0.83
<b>BlackSea Wheat (Near)</b>	227.00	0.00			
<b>Index Change</b>					
<b>Maize (Jul24)</b>	3,288	R 33.11	<b>Wheat CBOT (Jul24)</b>	4,717	R150.93
<b>Soya (Jul24)</b>	8,240	R 1.59	<b>Wheat Kansas (Jul24)</b>	4,741	R 129.16
<b>BlackSea Wheat Near</b>	4,103	<b>R -16.64</b>	<b>RAND EFFECT ON WHEAT PARITY</b>	4,593	<b>-R 18.62</b>

# South African Rand (ZAR)

USD/ZAR Weekly: Bullish < R18.70

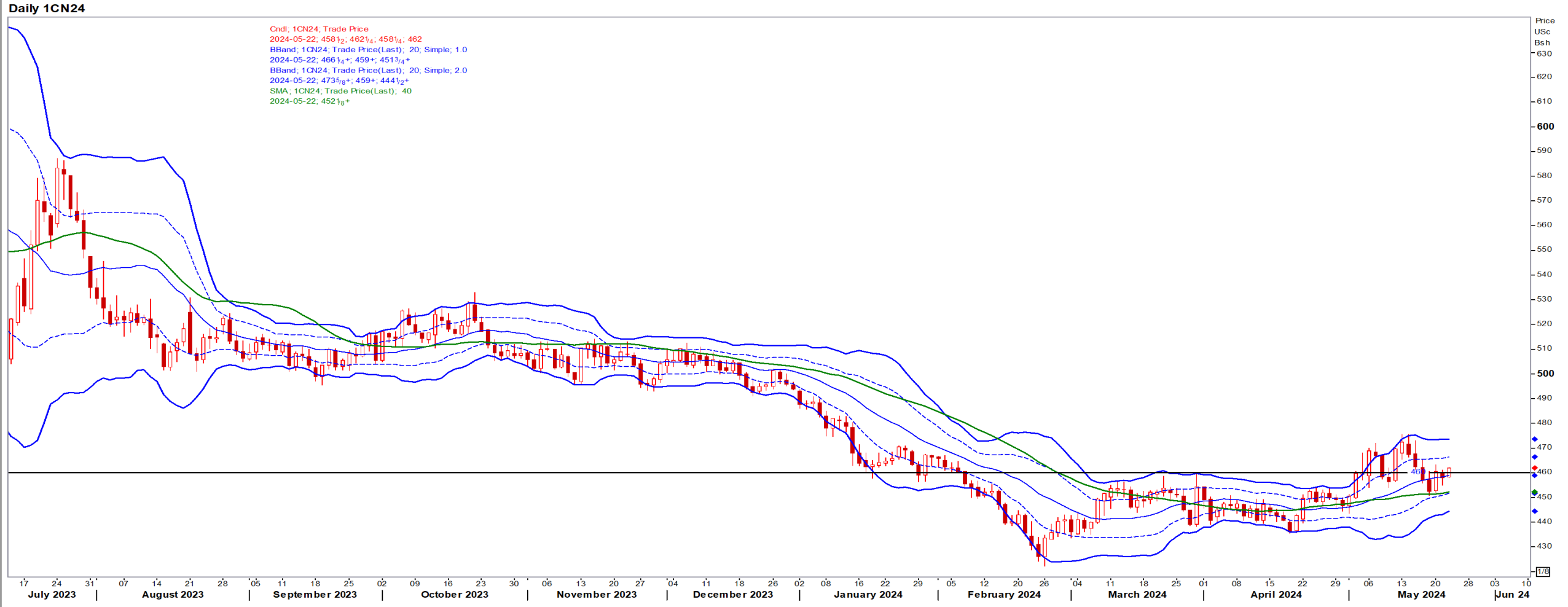
- USD edged up on Tuesday as the Fed said it is prudent to wait more months to ensure that inflation is back on a path to the 2% target – Reuters News.
- Stronger than R18.70 the ZAR is in bullish mode, but the overall LT picture is ZAR bearish.



# USA Corn

Jul24 Daily: Contract status bullish > \$4.60

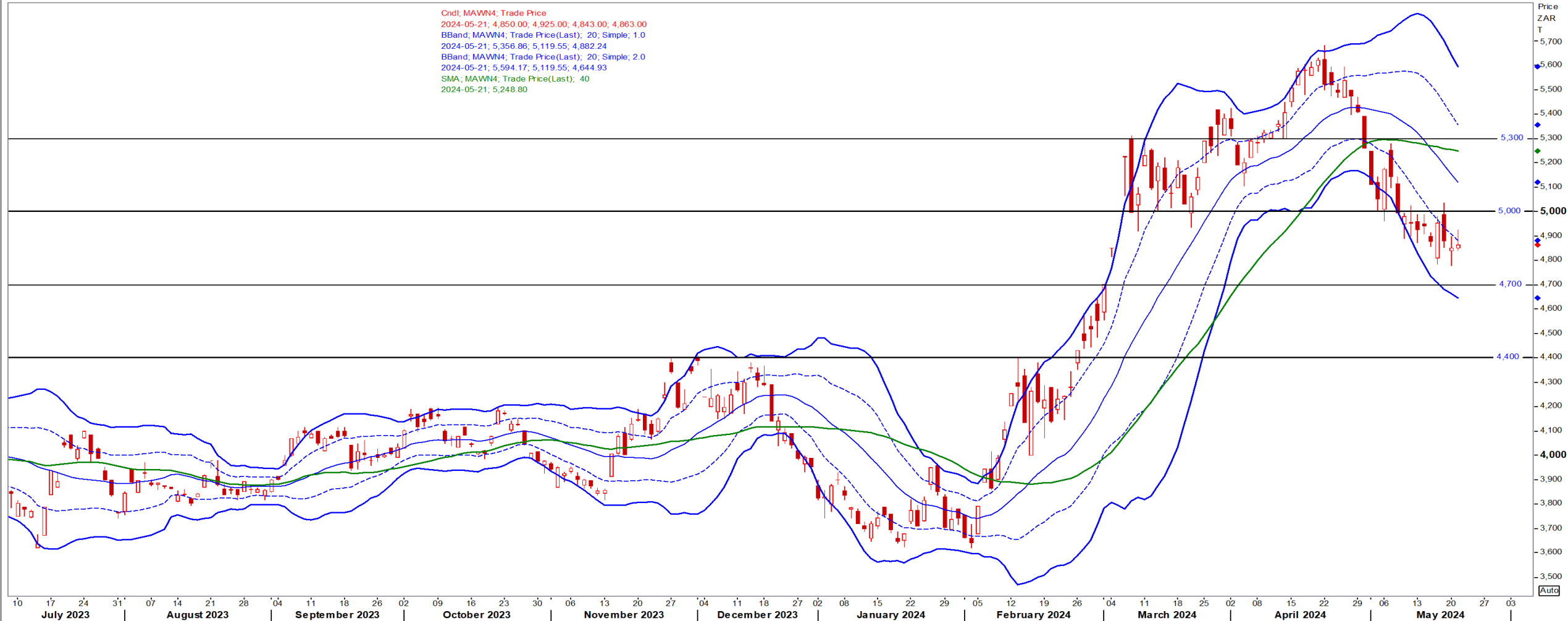
- Corn declined on Tuesday under pressure from the USDA's crop-progress report that showed speedy planting of corn in the US – Reuters News.



# White Maize

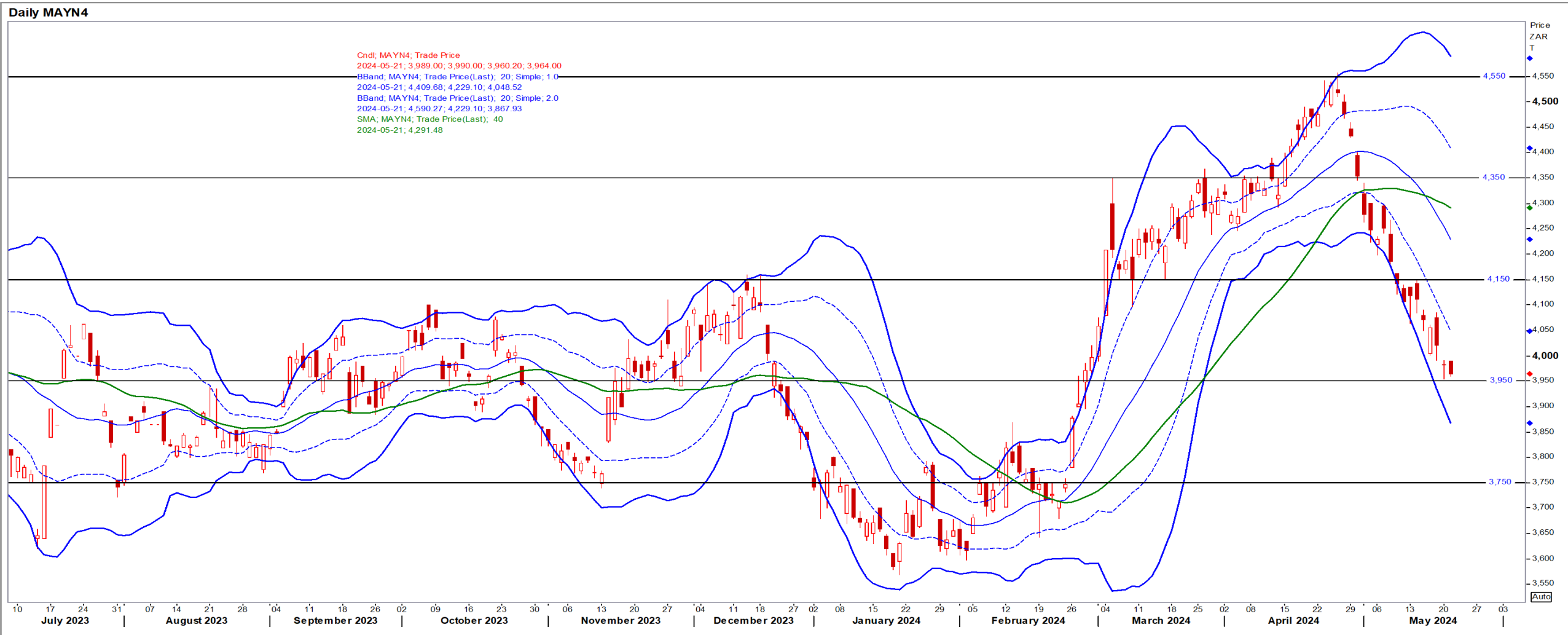
Jul24 Daily: Contract status bearish < R5000

Daily MAWN4



# Yellow Maize

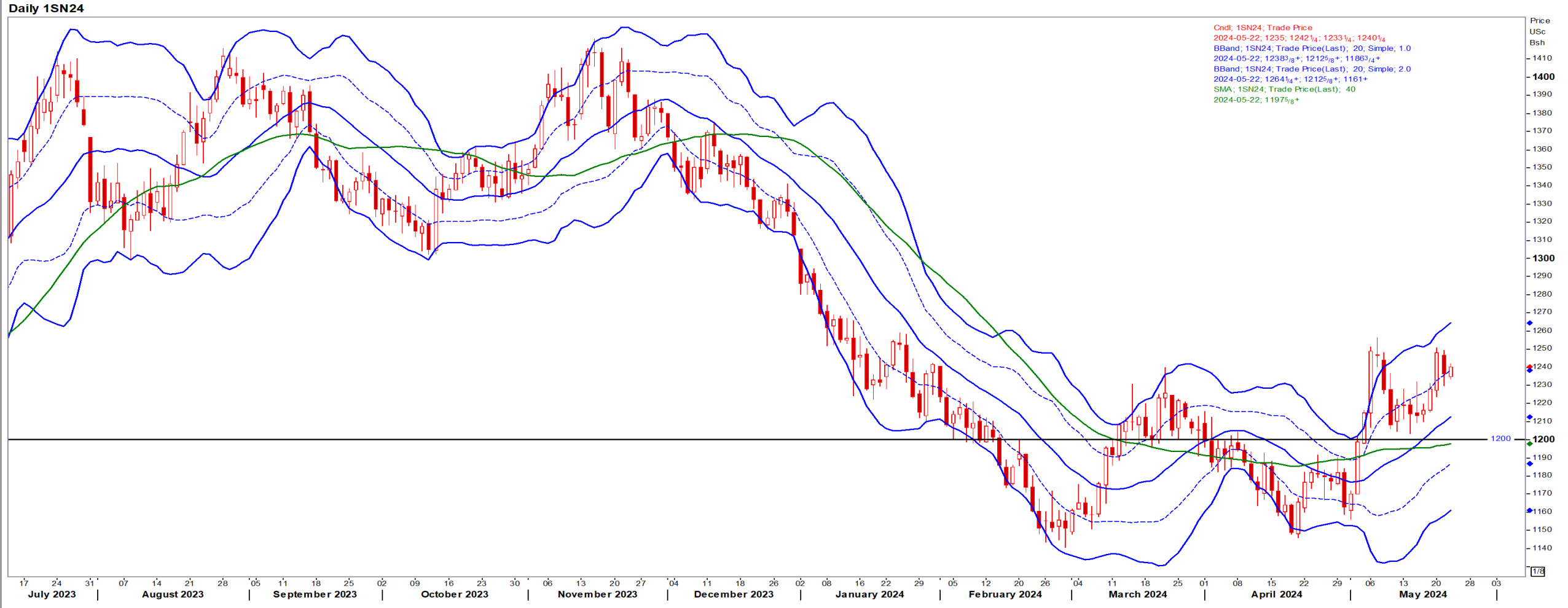
Jul24 Daily: Contract status very bearish < R4150



# USA Soya

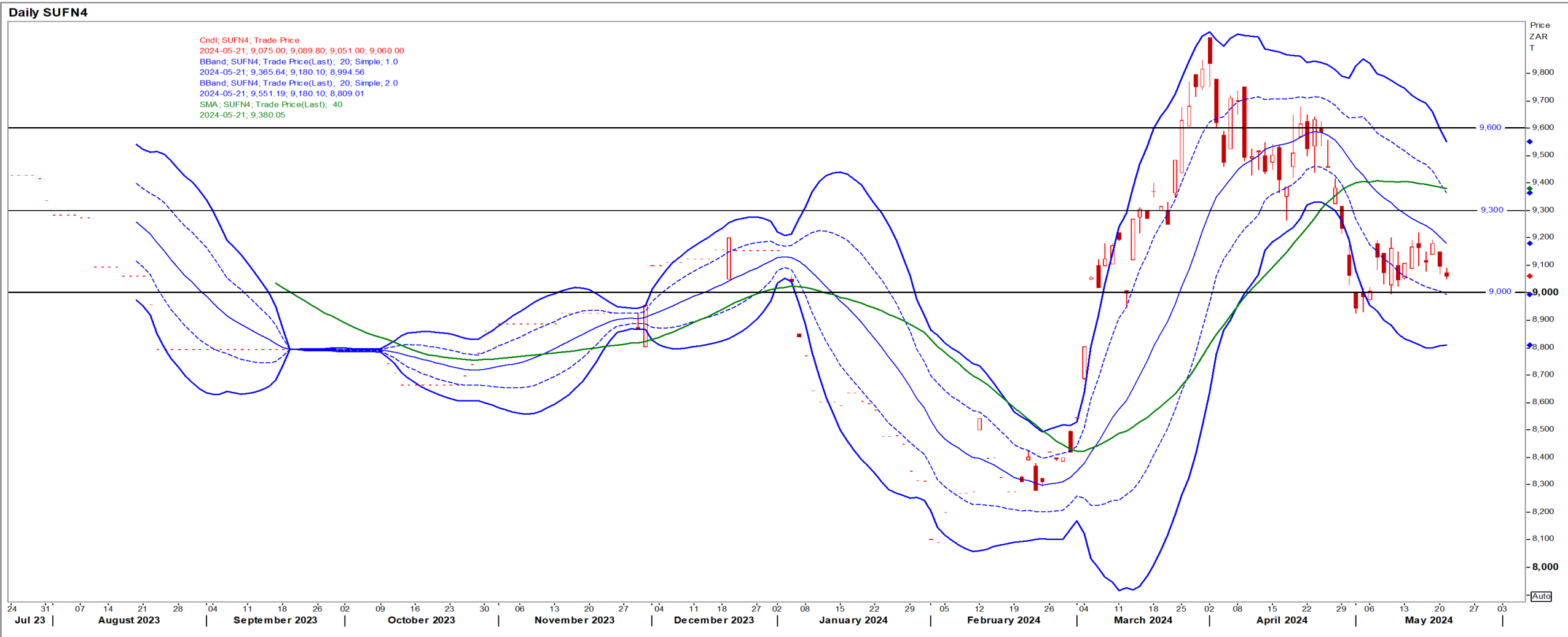
Jul24 Daily: Contract status bullish > \$12.00

- China bought US soybeans as Brazilian prices firm, supporting prices – Reuters News.



# Suns

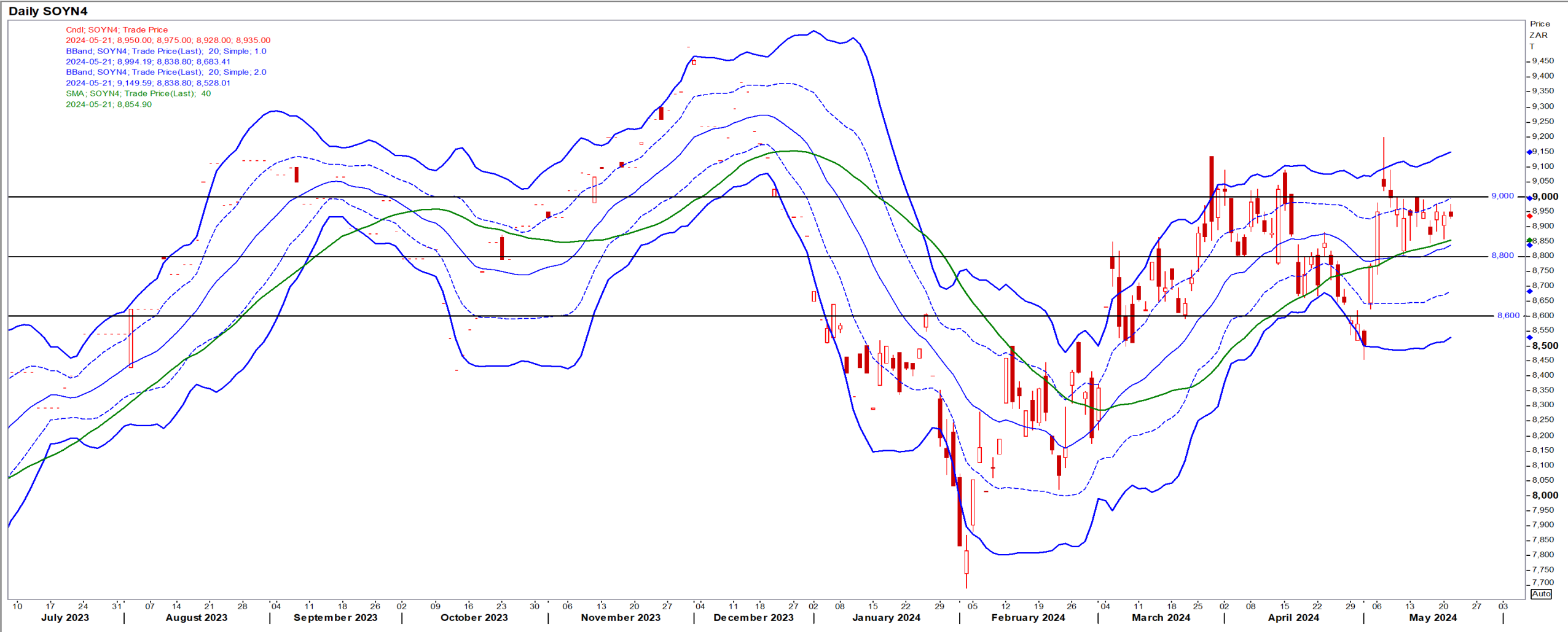
Jul24 Daily: Contract status bearish < R9300





# SA Soya

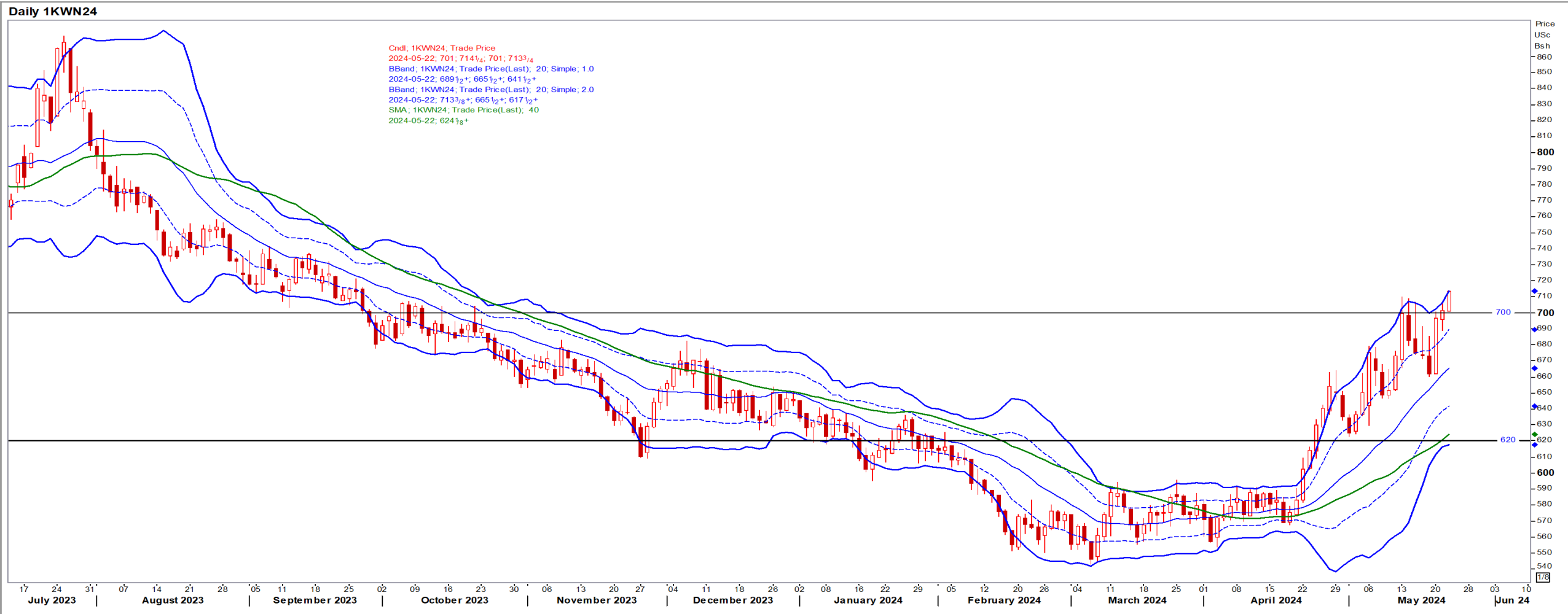
Jul24 Daily: Contract status bullish > R8800



# US KANSAS Wheat

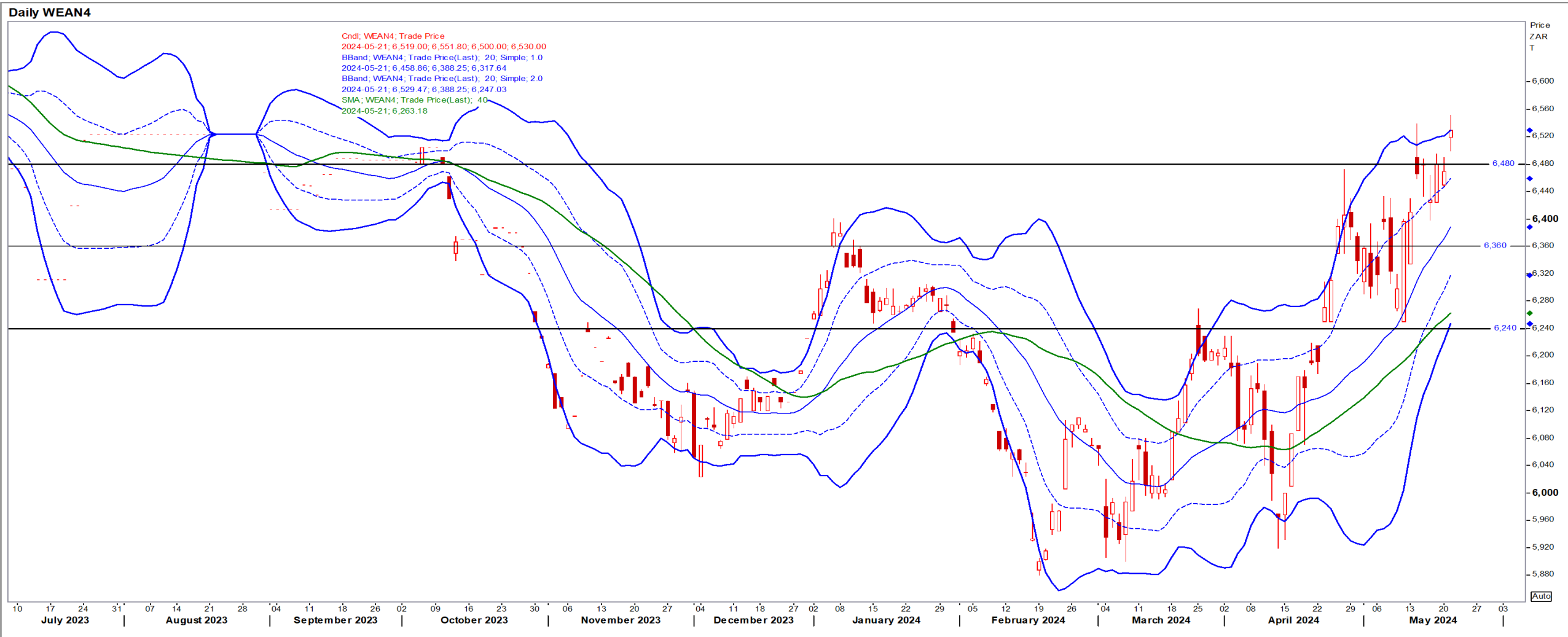
Jul24 Daily: Contract status very bullish > \$6.20 (getting overbought)

- Wheat futures reached highest levels since July on Tuesday as frost in top-exporter Russia and lower US crop ratings supported prices – Reuters News.



# SA Wheat

Jul24 Daily: Contract status very bullish > R6360

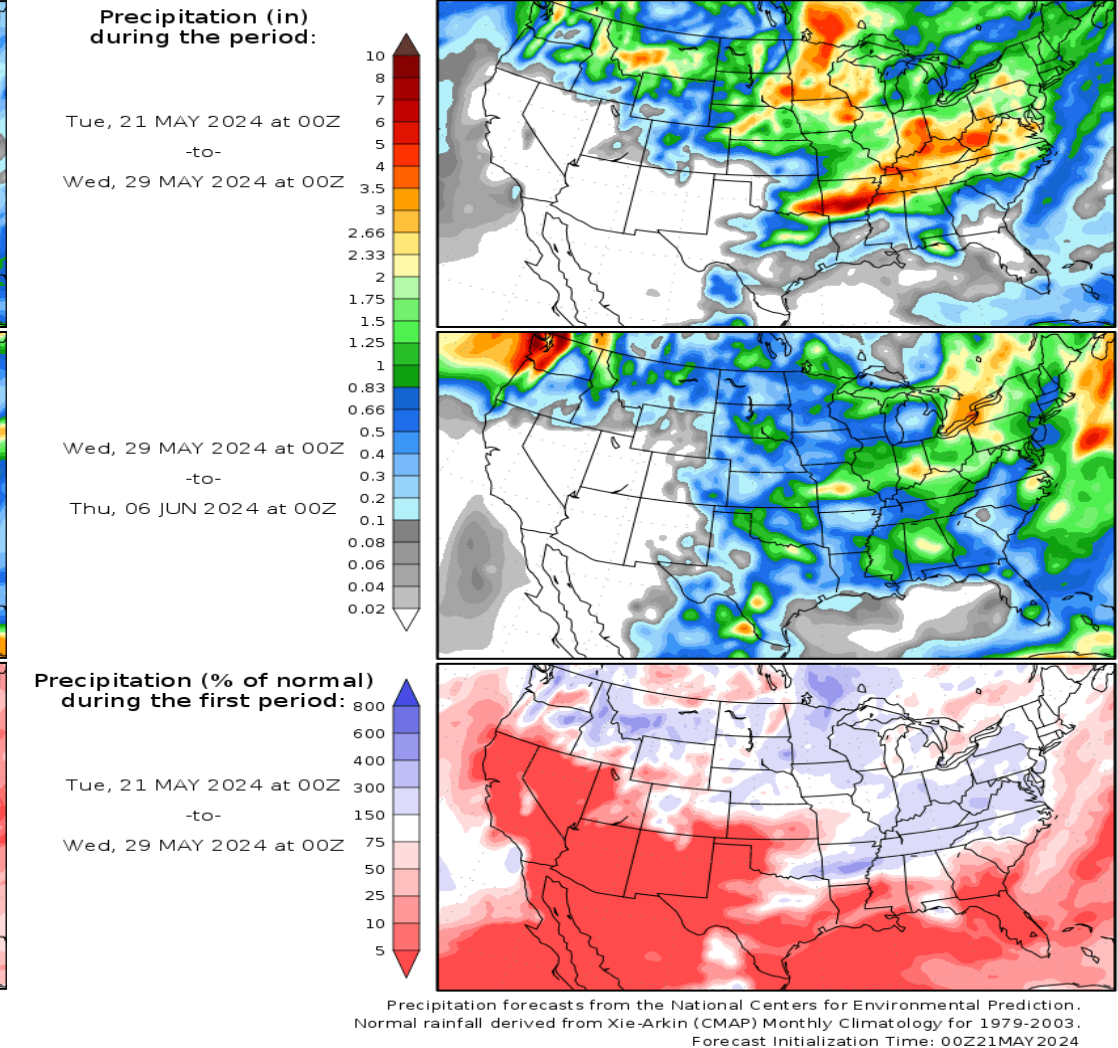
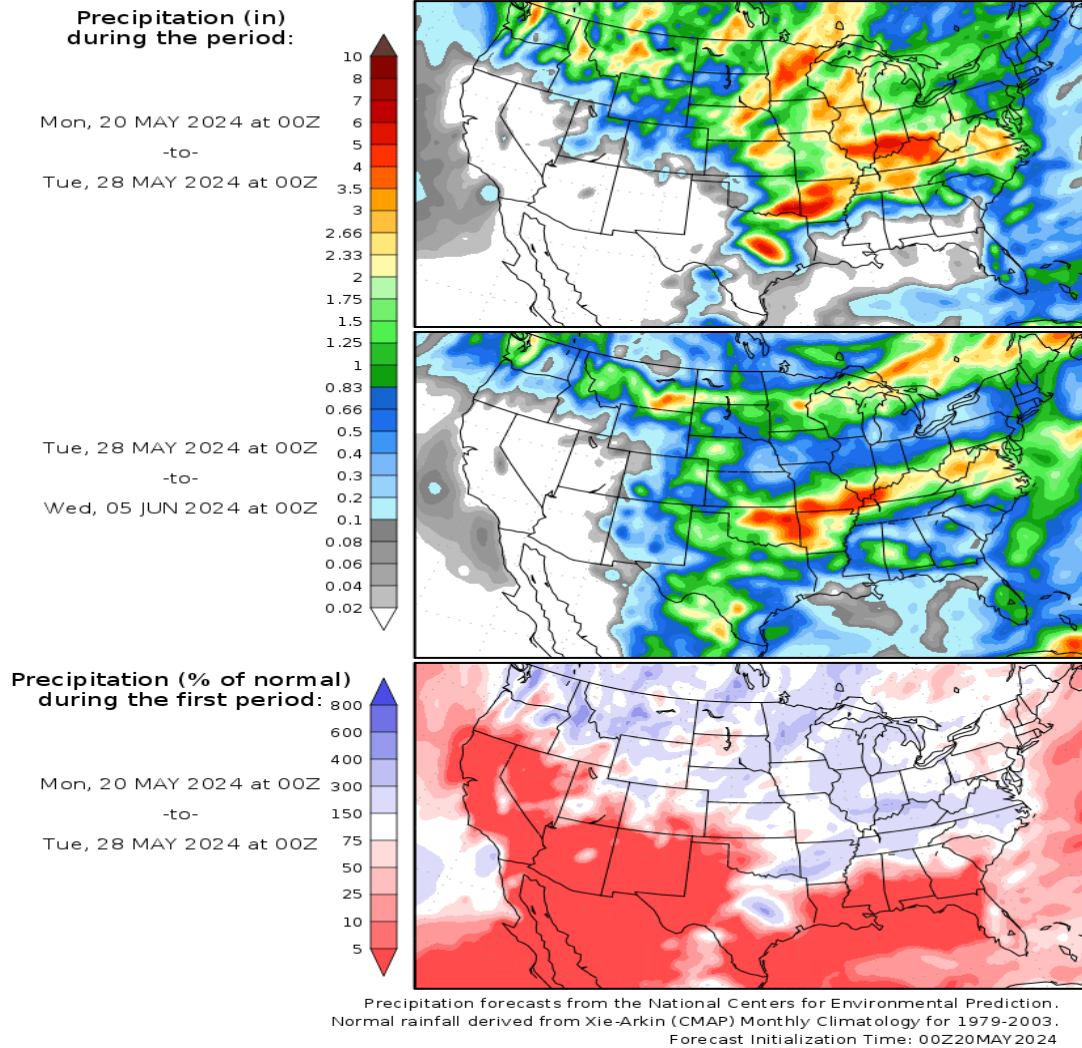


# Weather

## US Medium-term Precipitation Forecasts

### Precipitation Forecasts

### Precipitation Forecasts



GrADS/COLA

GrADS/COLA