

Daily market
Report
05 Jul 24



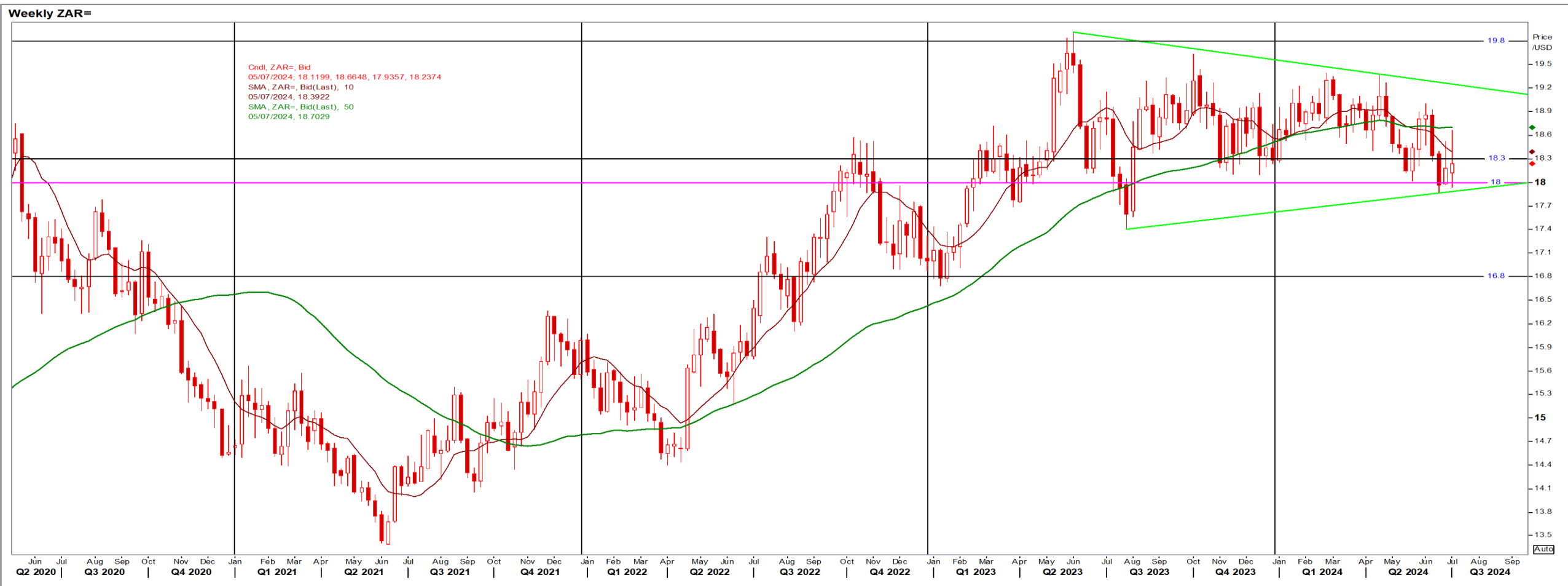
Parity Movements (implied price moves)

USA Movement (Overnight)	Cents	Currencies	05/Jul/24	07:22:24	
CORN CBOT (Dec24)	419.50	0.00 R/\$ last	18.2388	-0.1385	
SOY CBOT (Nov24)	1,121.50	0.00 Euro=	1.0820	0.0024	
W1 CBOT (Dec24)	598.00	0.00 GOLD	2,364	6.0900	
W2 KCBT (Dec24)	601.00	0.00 BRENT	87.14	0.15	
BlackSea Wheat (Near)	196.00	4.00			
Index Change					
Maize (Dec24)	3,012	R -22.87	Wheat CBOT (Dec24)	4,008	-R30.43
Soya (Nov24)	7,515	R -57.07	Wheat Kansas (Dec24)	4,028	R -30.58
BlackSea Wheat Near	3,575	R 46.36	RAND EFFECT ON WHEAT PARITY	4,028	-R 30.58

South African Rand (ZAR)

USD/ZAR Weekly: Bullish < R18.30

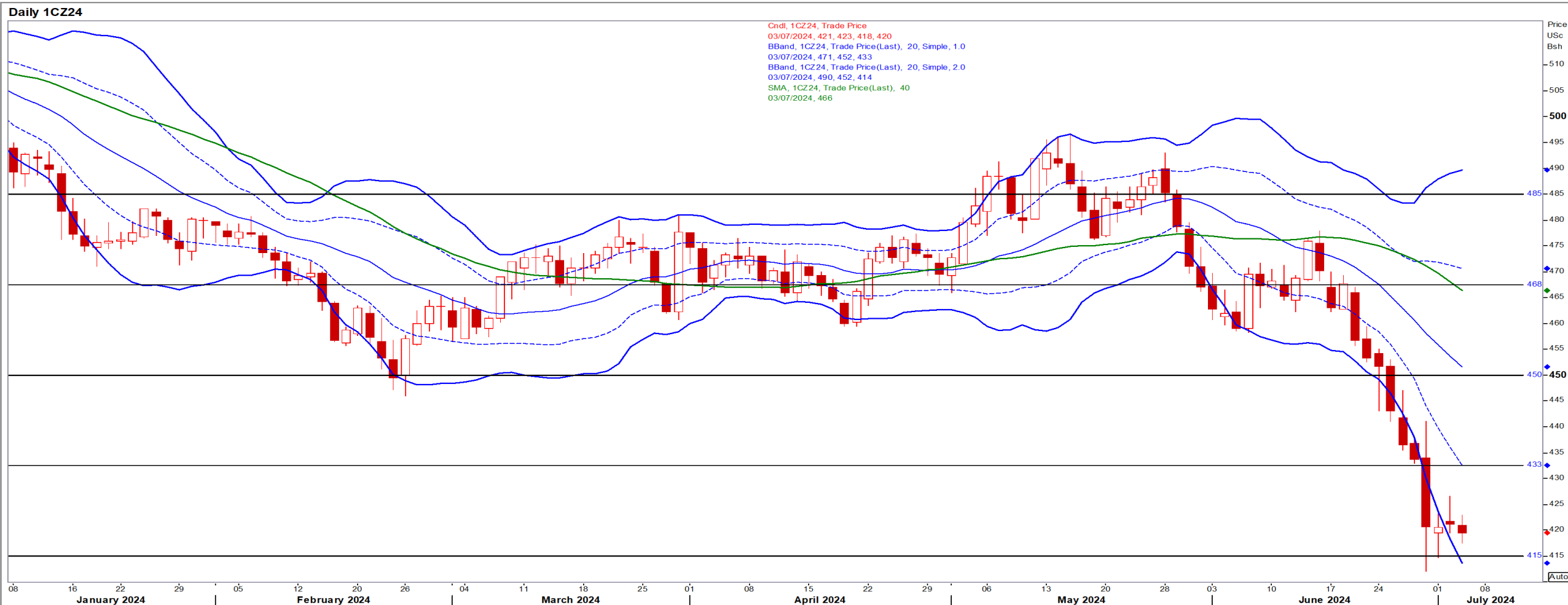
- ZAR extended its rally as markets priced in a potential US rate cut as early as September – Reuters News.
- Stronger than R18.30 the short-term ZAR is bullish with the overall long-term picture ZAR bearish.



USA Corn

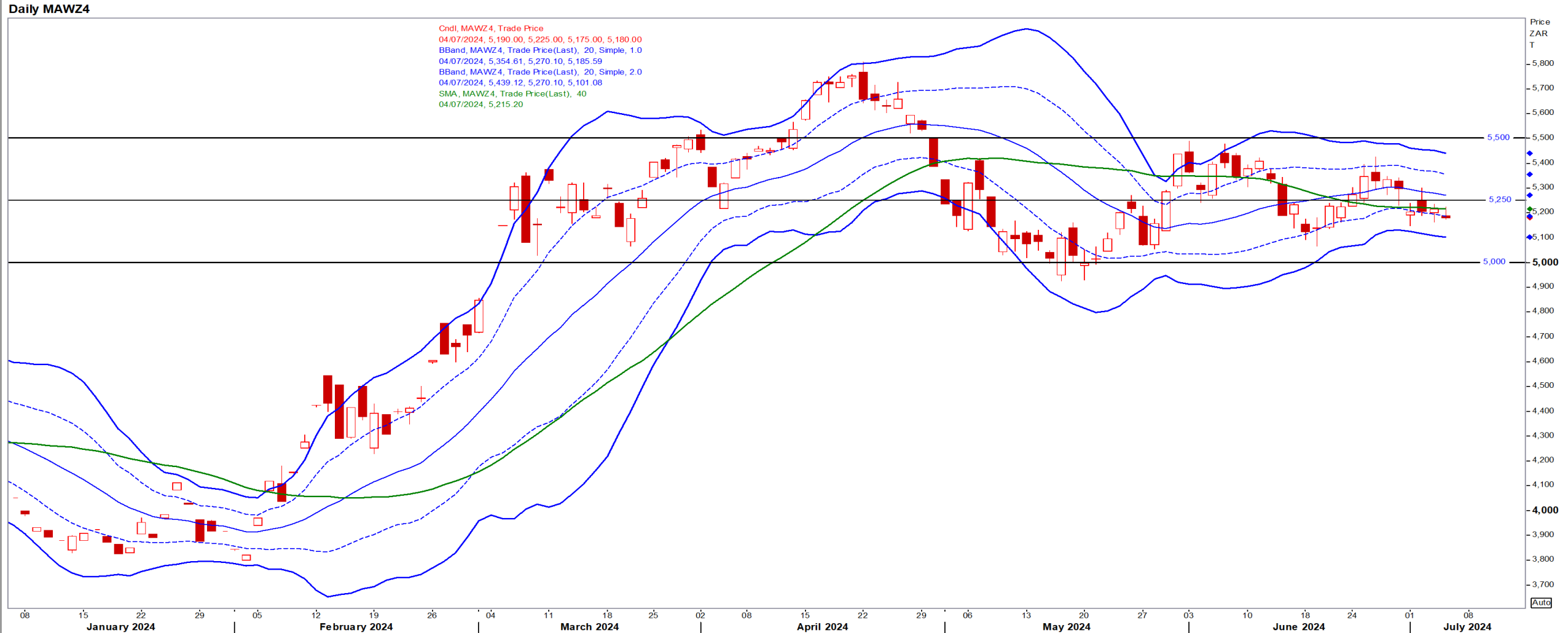
Dec24 Daily: Contract status very bearish < \$4.50

- 24/25 US corn production is raised by 1% amid favourable Jul weather prospects and overall high crop condition scores – Reuters News.



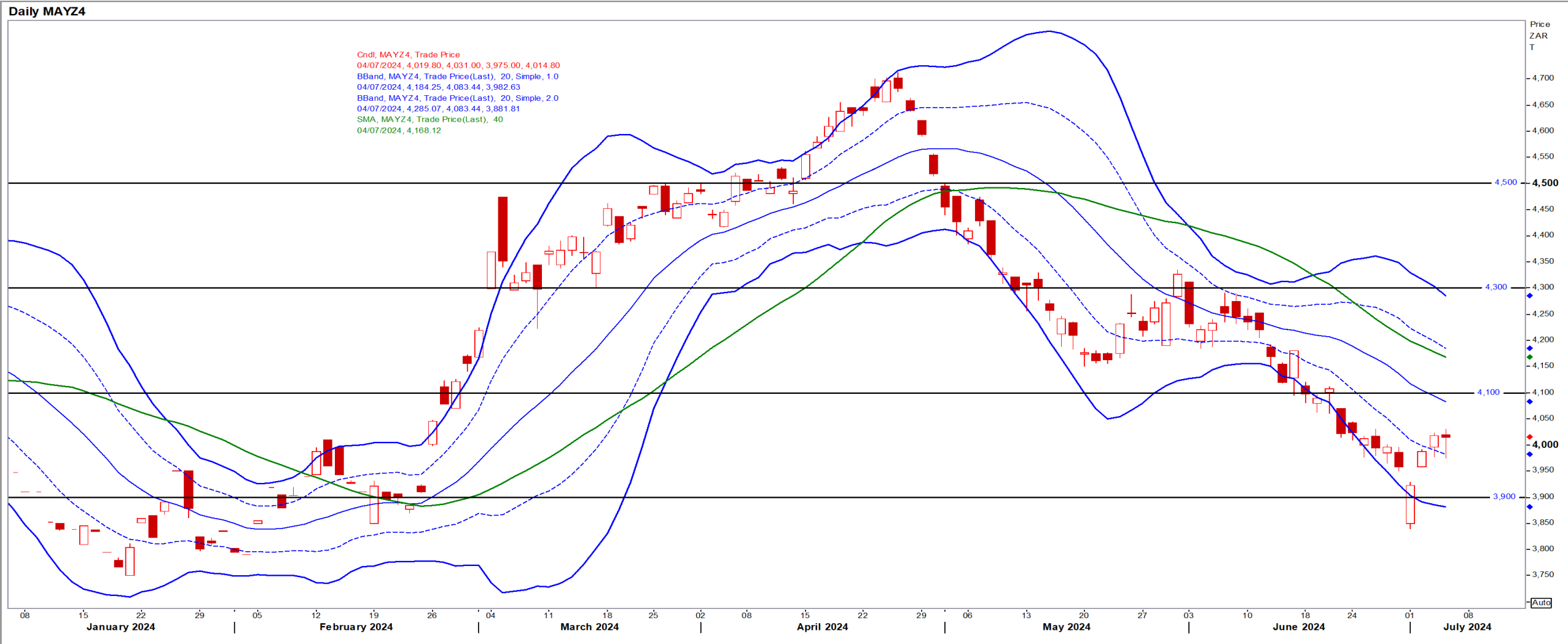
White Maize

Dec24 Daily: Contract status bearish < R5250



Yellow Maize

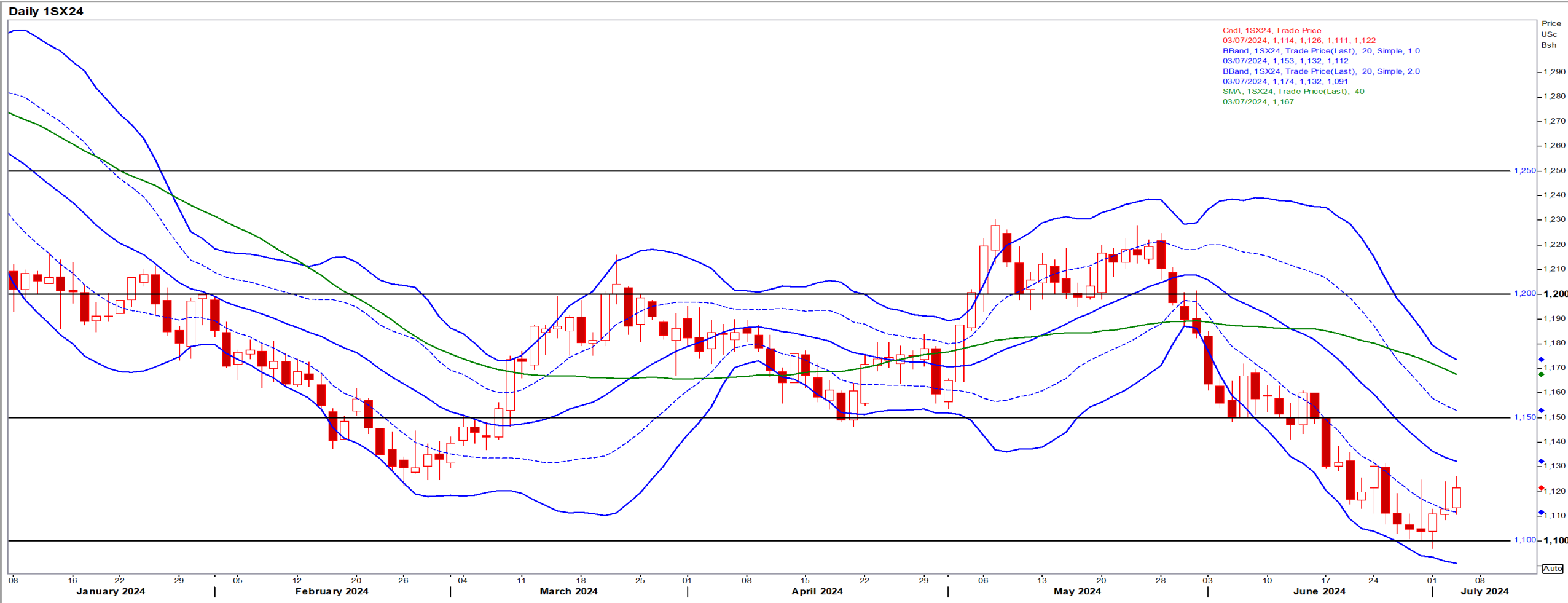
Dec24 Daily: Contract status very bearish < R4100



USA Soya

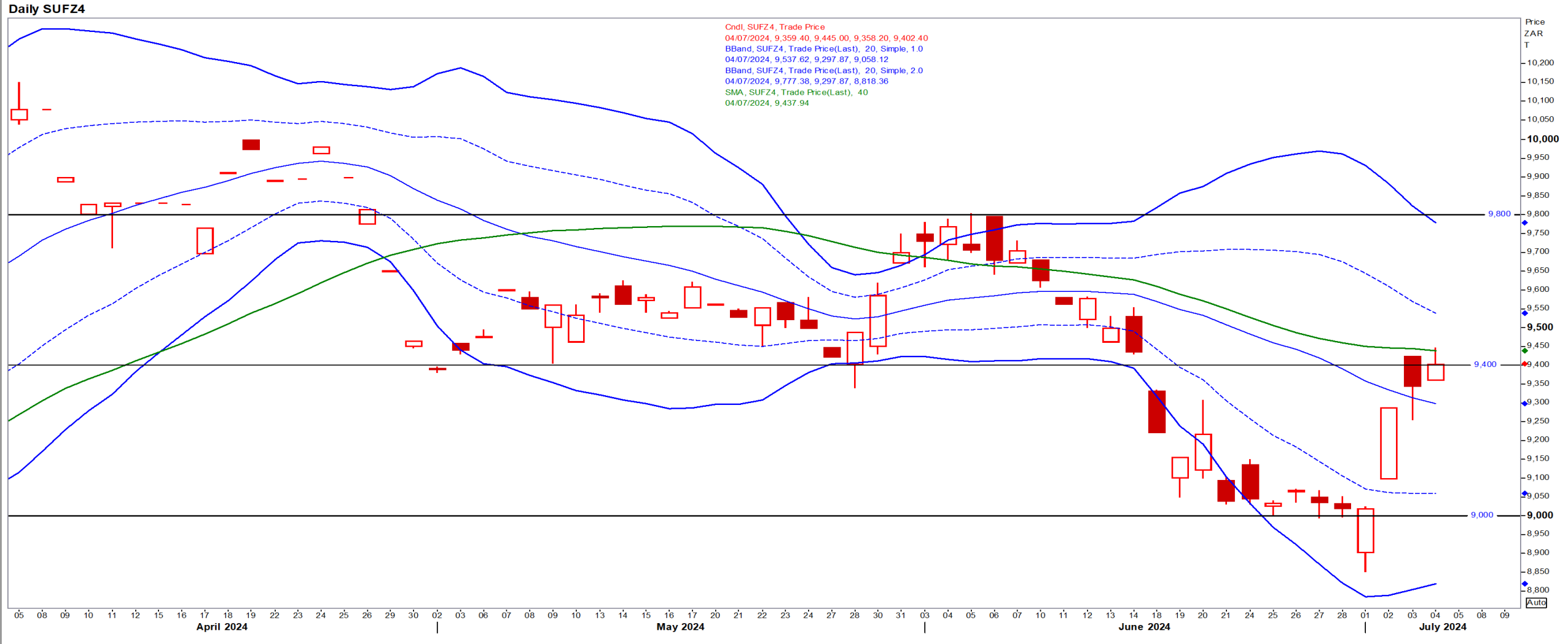
Nov24 Daily: Contract status bearish < \$11.50

- US corn and beans prices have tumbled to 4-year lows and producers' disappointment is reflected in their unusually massive stockpiles – Reuters News.



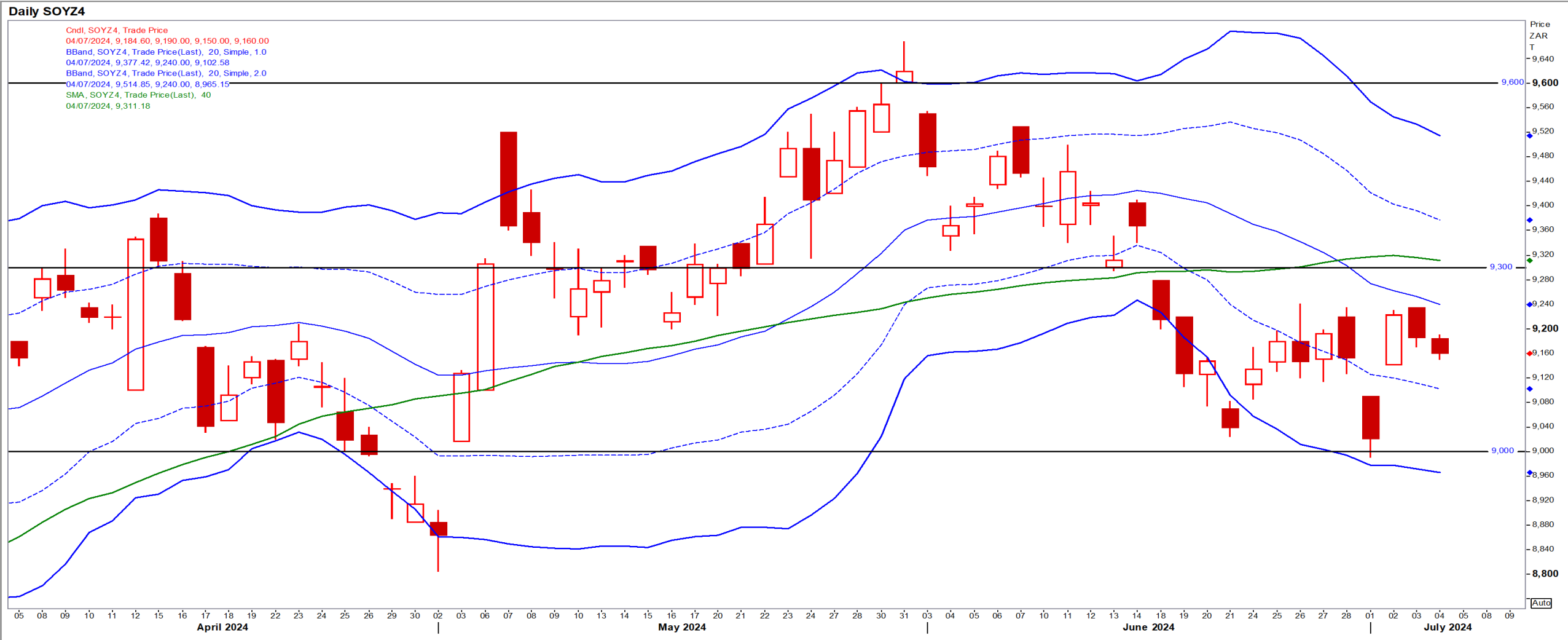
Suns

Dec24 Daily: Contract status bearish < R9440



SA Soya

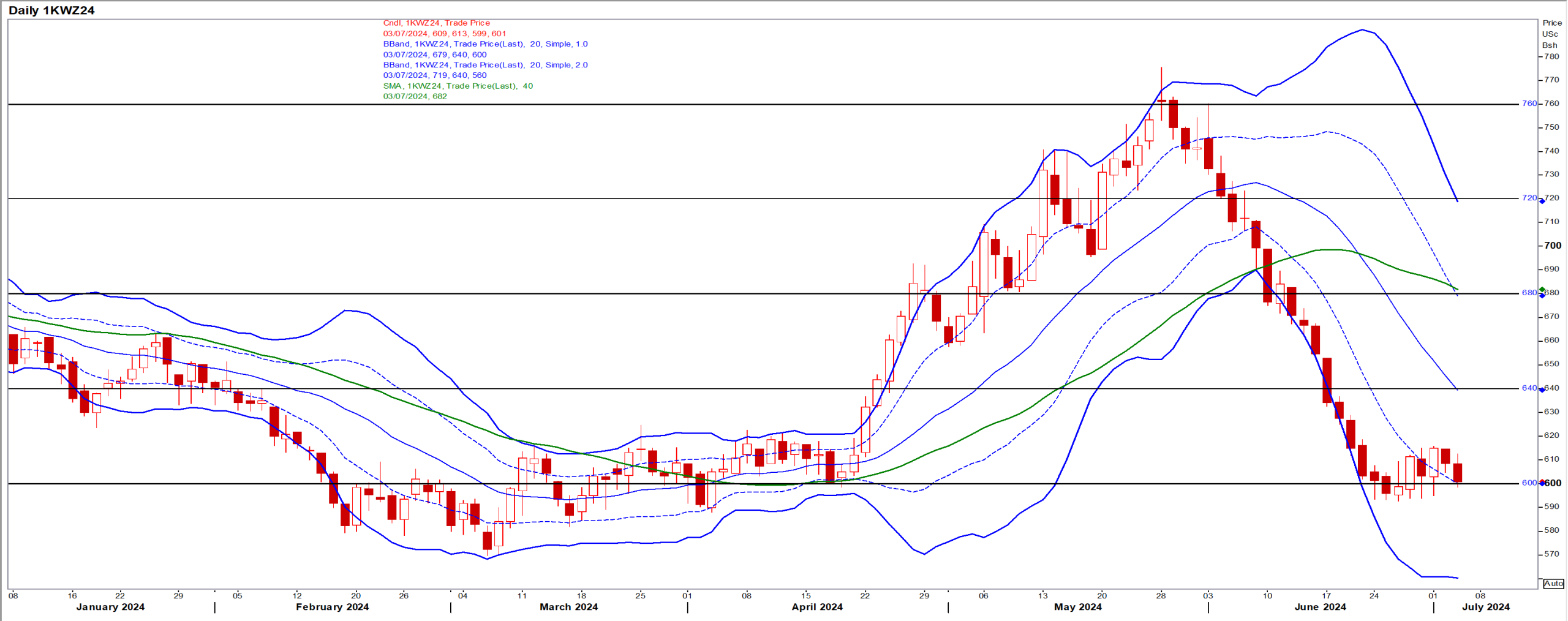
Dec24 Daily: Contract status bearish < R9300



US KANSAS Wheat

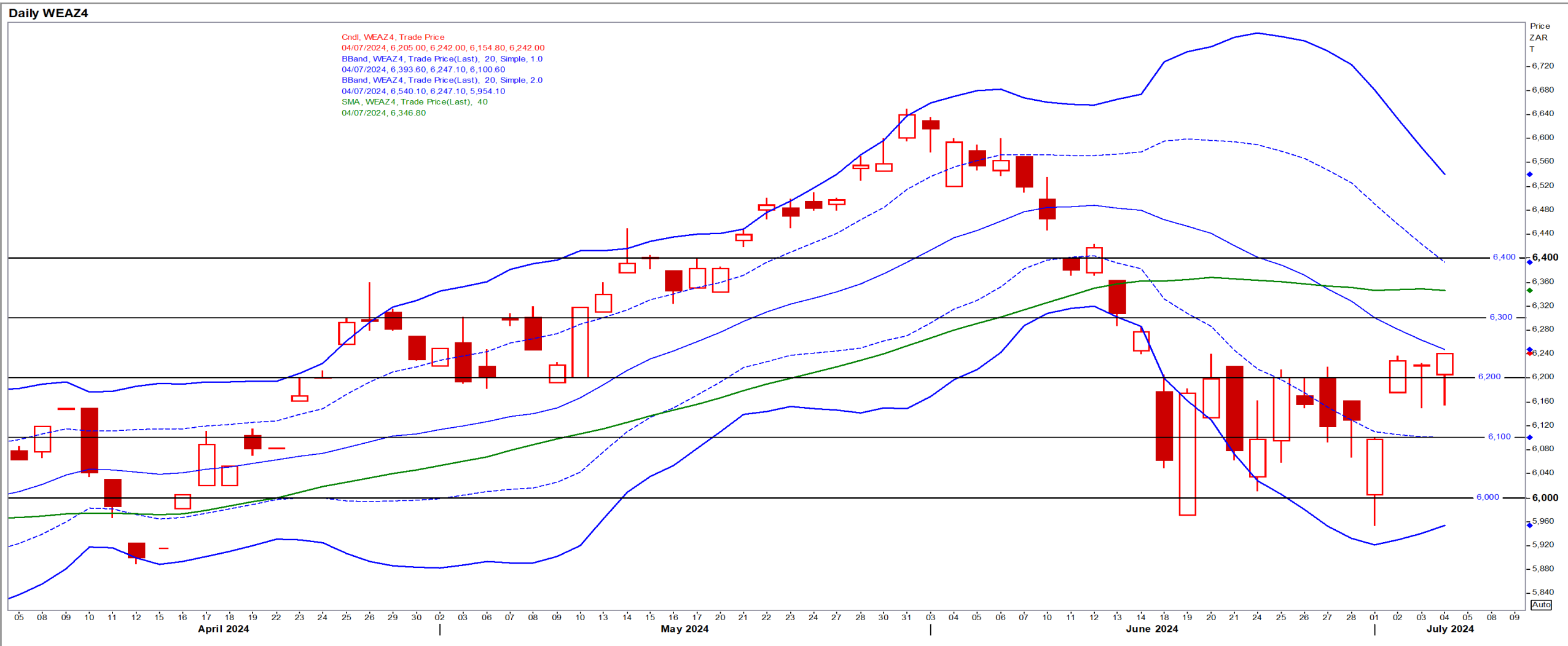
Dec24 Daily: Contract status very bearish < \$6.80

- European wheat rose on a technical rebound after falling sharply the previous day, but volumes were thin with US markets closed – Reuters News.



SA Wheat

Dec24 Daily: Contract status sideways in-between R6100/R6300



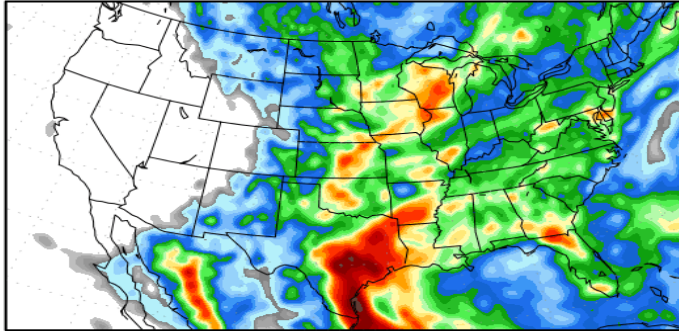
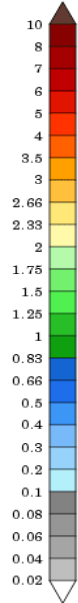
Weather

US Medium-term Precipitation Forecasts: US Corn moving into pollination

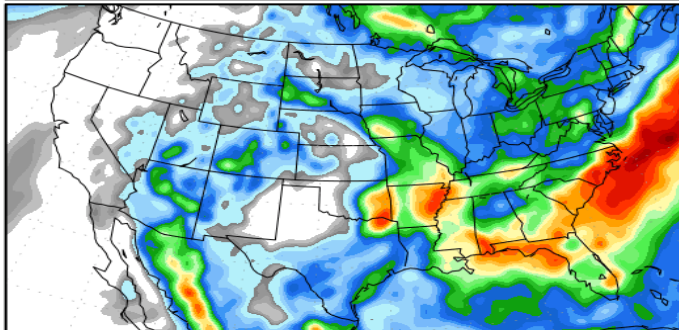
Precipitation Forecasts

Precipitation (in) during the period:

???, 08 JUL 2024 at 00Z
-to-
???, 11 JUL 2024 at 00Z

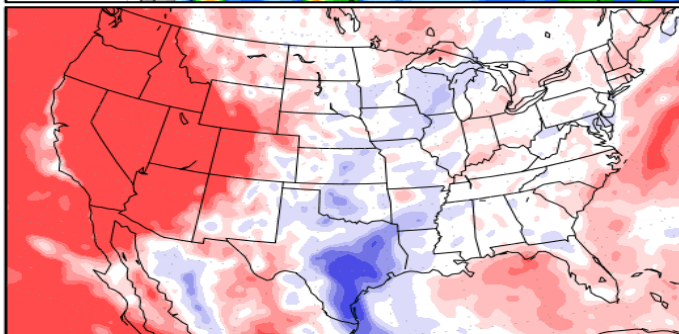
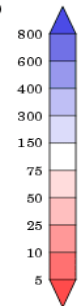


???, 11 JUL 2024 at 00Z
-to-
???, 19 JUL 2024 at 00Z



Precipitation (% of normal) during the first period:

???, 08 JUL 2024 at 00Z
-to-
???, 11 JUL 2024 at 00Z



Precipitation forecasts from the National Centers for Environmental Prediction.
Normal rainfall derived from Xie-Arkin (CMAP) Monthly Climatology for 1979-2003.
Forecast Initialization Time: 00Z03JUL2024

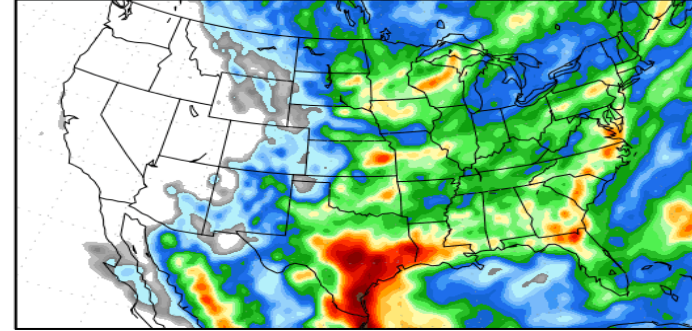
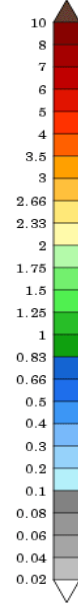
GrADS/COLA

GrADS/COLA

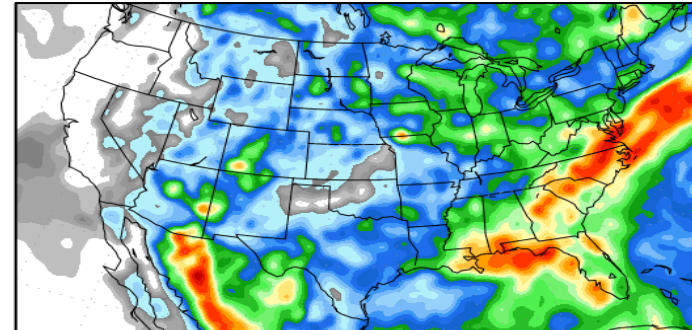
Precipitation Forecasts

Precipitation (in) during the period:

???, 04 JUL 2024 at 00Z
-to-
???, 12 JUL 2024 at 00Z

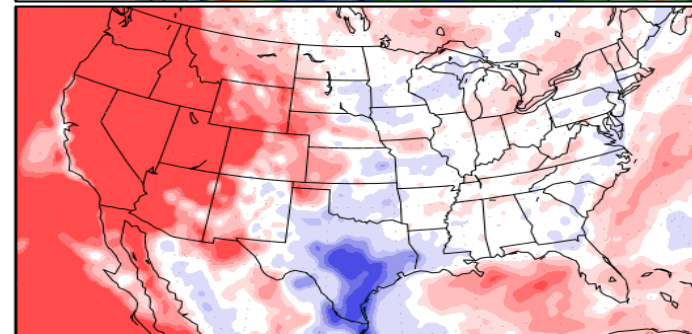
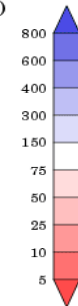


???, 12 JUL 2024 at 00Z
-to-
???, 20 JUL 2024 at 00Z



Precipitation (% of normal) during the first period:

???, 04 JUL 2024 at 00Z
-to-
???, 12 JUL 2024 at 00Z



Precipitation forecasts from the National Centers for Environmental Prediction.
Normal rainfall derived from Xie-Arkin (CMAP) Monthly Climatology for 1979-2003.
Forecast Initialization Time: 00Z04JUL2024

