

Daily market
Report
09 Jul 24



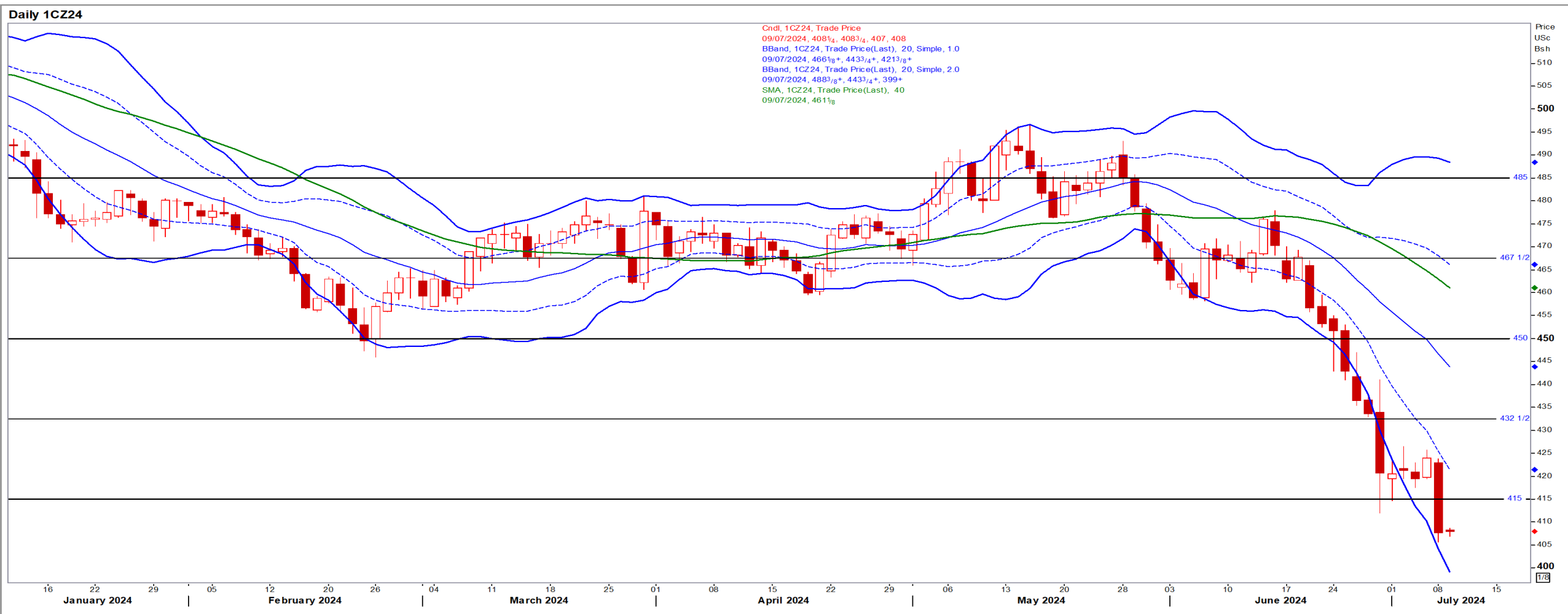
Parity Movements (implied price moves)

USA Movement (Overnight)	Cents	Currencies	09/Jul/24	07:39:26	
CORN CBOT (Dec24)	408.25	-10.75	R/\$ last	18.1201	-0.0178
SOY CBOT (Nov24)	1,095.25	-17.25	Euro=	1.0827	-0.0007
W1 CBOT (Dec24)	598.25	-6.50	GOLD	2,365	-7.5955
W2 KCBT (Dec24)	598.75	-6.00	BRENT	85.55	-0.13
BlackSea Wheat (Near)	197.00	1.00			
Index Change					
Maize (Dec24)	2,912	R -79.62	Wheat CBOT (Dec24)	3,983	-R47.23
Soya (Nov24)	7,291	R -122.11	Wheat Kansas (Dec24)	3,986	R -43.90
BlackSea Wheat Near	3,570	R 14.63	RAND EFFECT ON WHEAT PARITY	4,026	-R 3.96

USA Corn

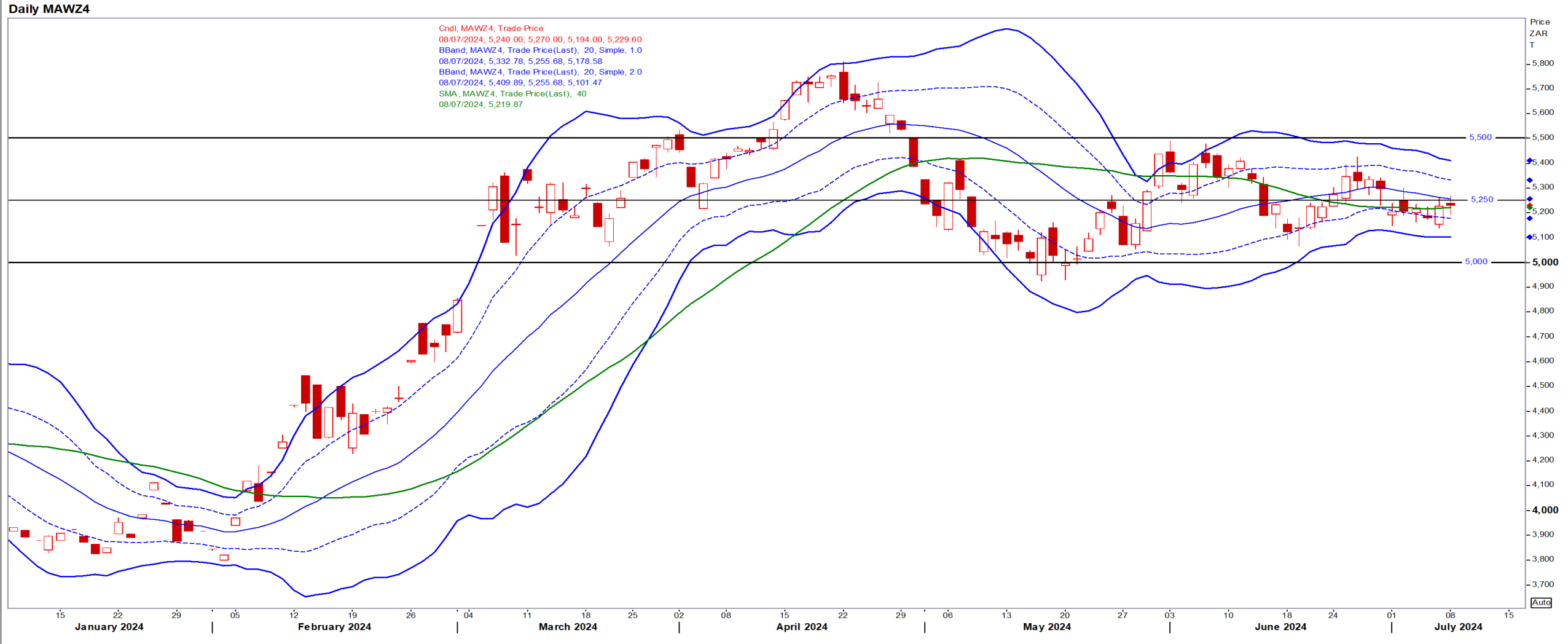
Dec24 Daily: Contract status very bearish < \$4.50

- Funds expanded their net short in CBOT corn futures and options to 336,538 contracts nearing the all-time record short of 340,732 – Reuters News.



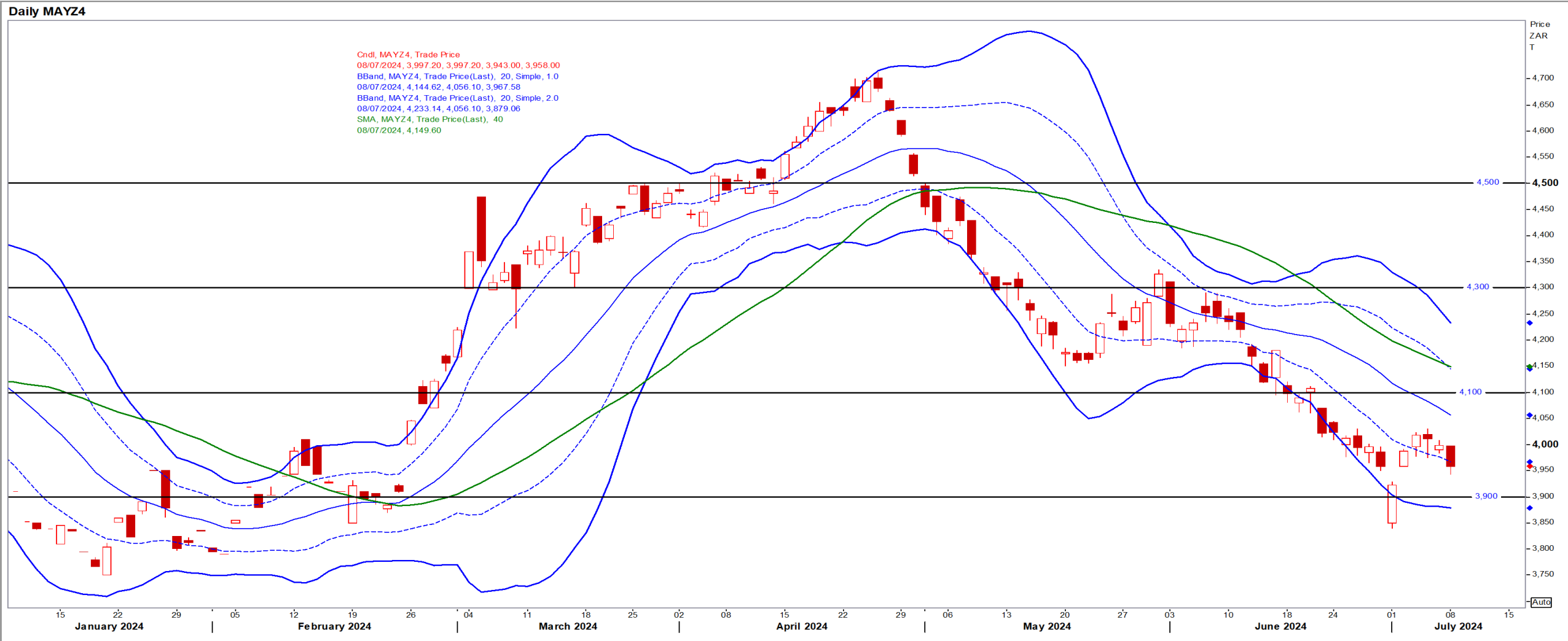
White Maize

Dec24 Daily: Contract status bearish < R5250



Yellow Maize

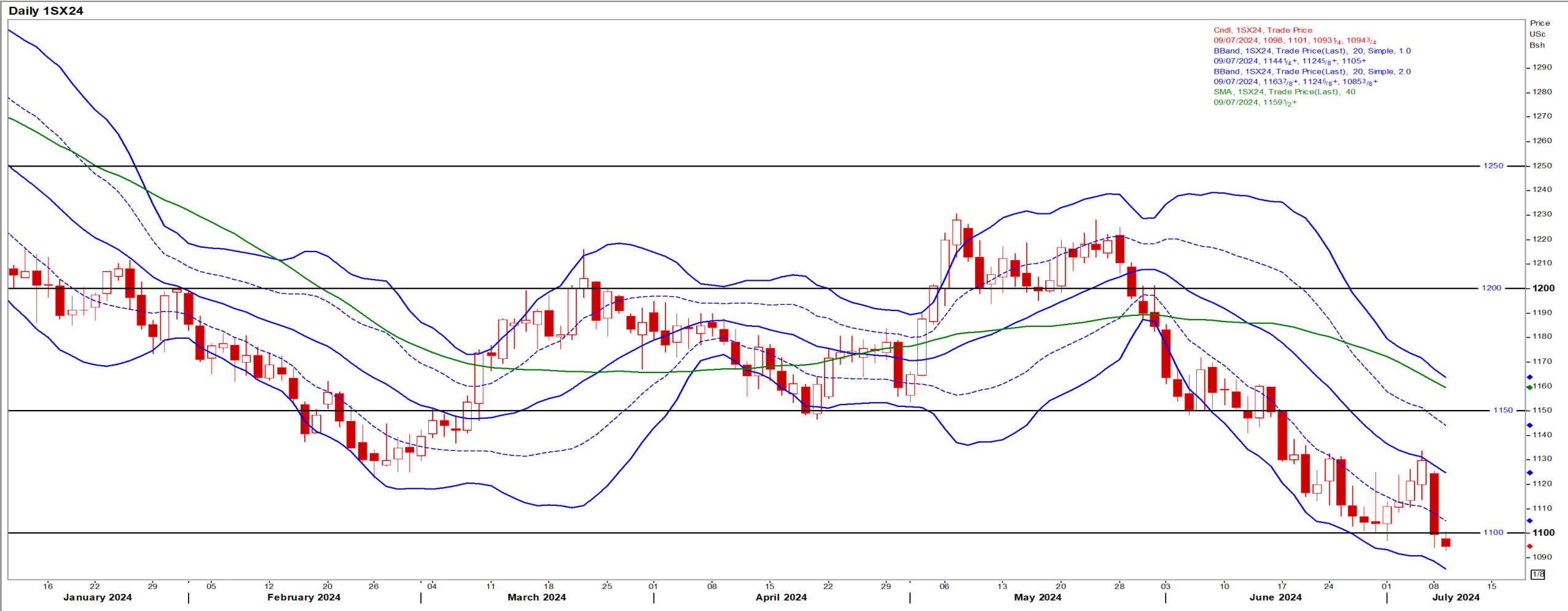
Dec24 Daily: Contract status very bearish < R4100



USA Soya

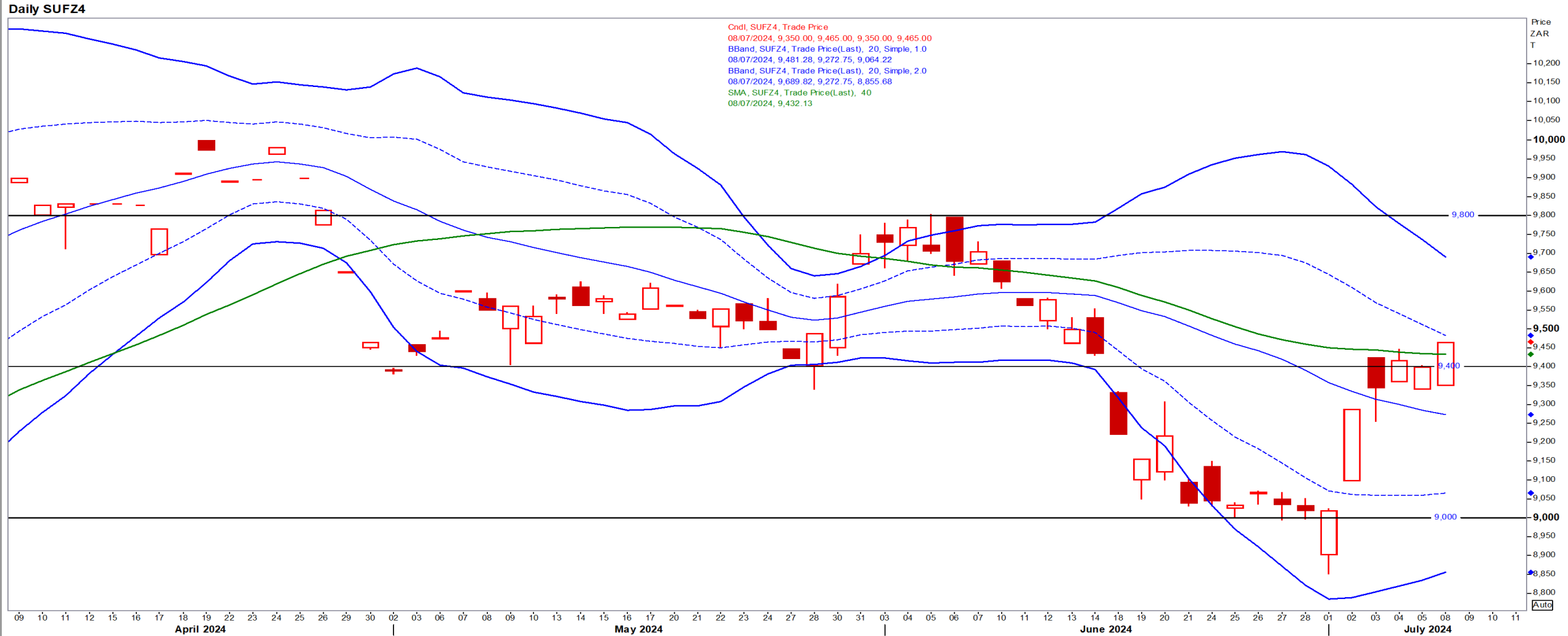
Nov24 Daily: Contract status bearish < \$11.50

- Beans dropped to their lowest price in nearly four years as traders expected a positive picture of US crop progress – Reuters News.



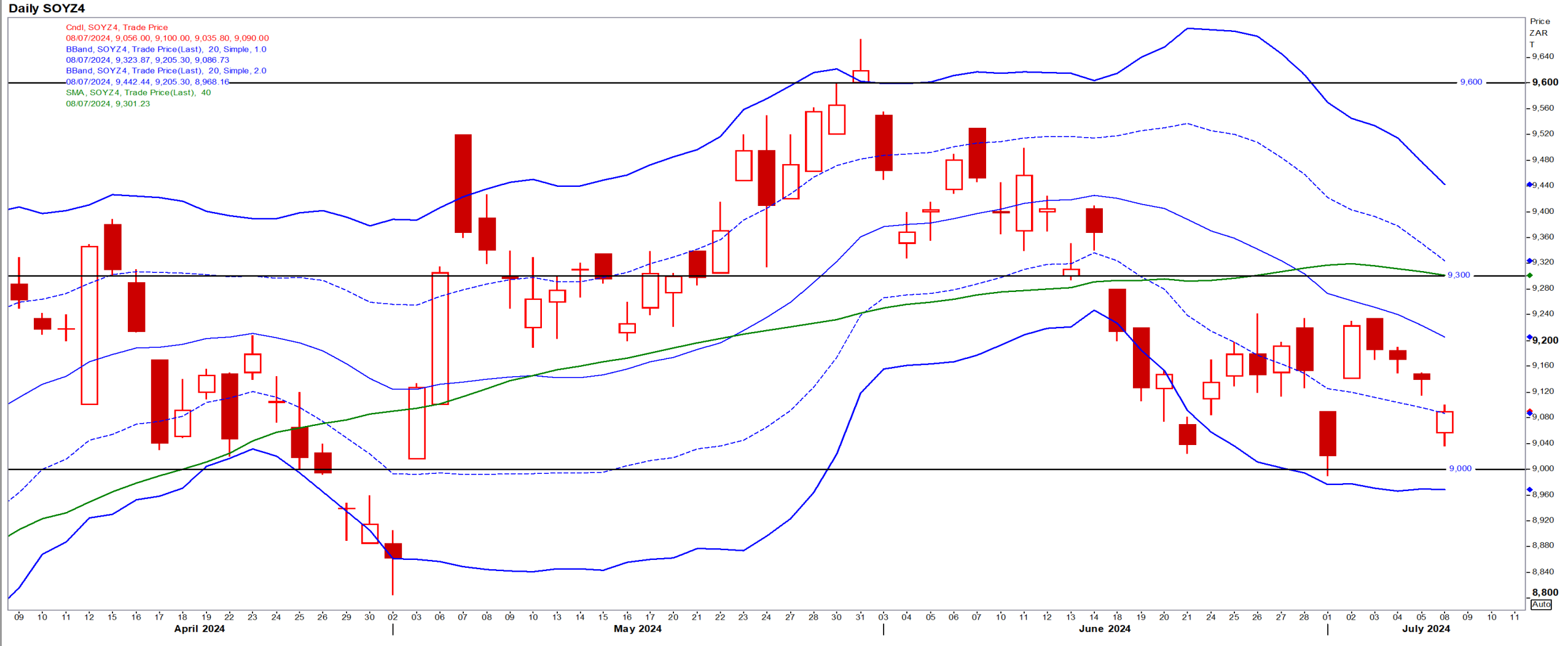
Suns

Dec24 Daily: Contract status bullish > R9435



SA Soya

Dec24 Daily: Contract status very bearish < R9300



US KANSAS Wheat

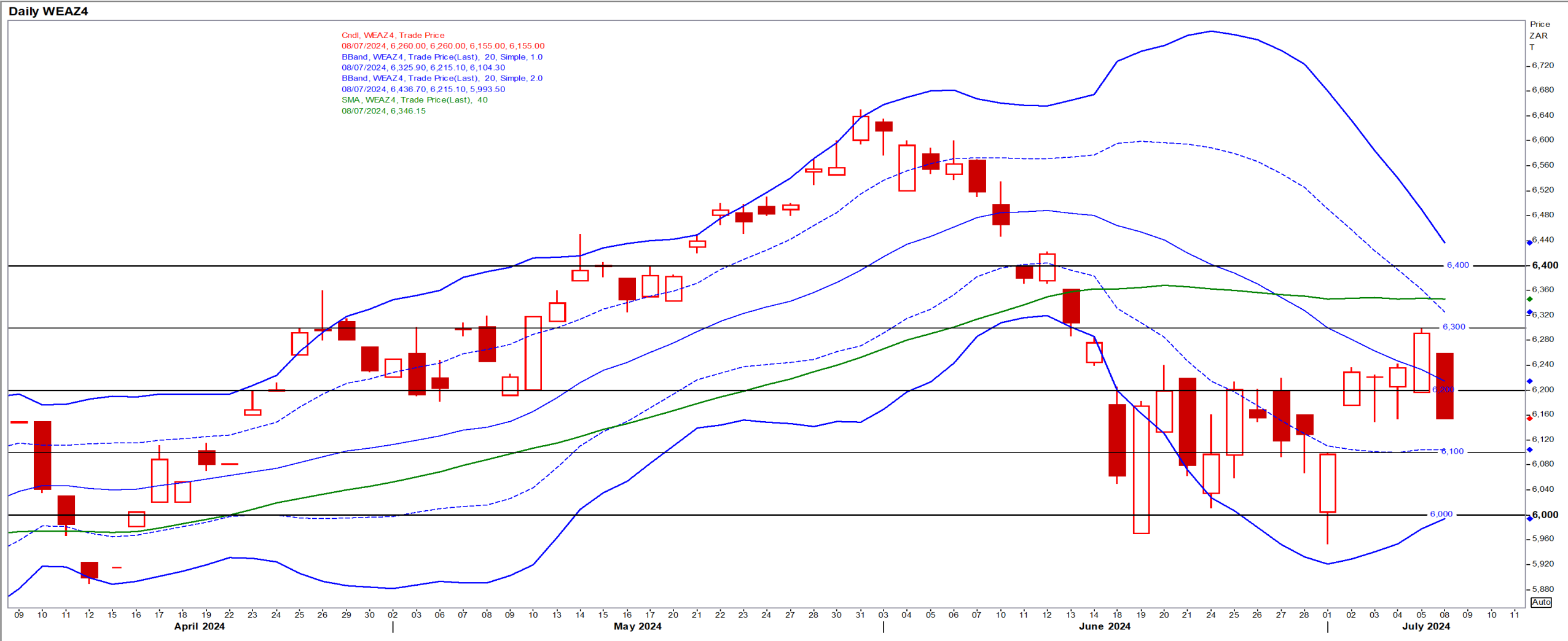
Dec24 Daily: Contract status very bearish < \$6.80

- Wheat steadied on Tuesday after sharp declines in the previous session as data showed that the condition of US crops had improved – Reuters News.



SA Wheat

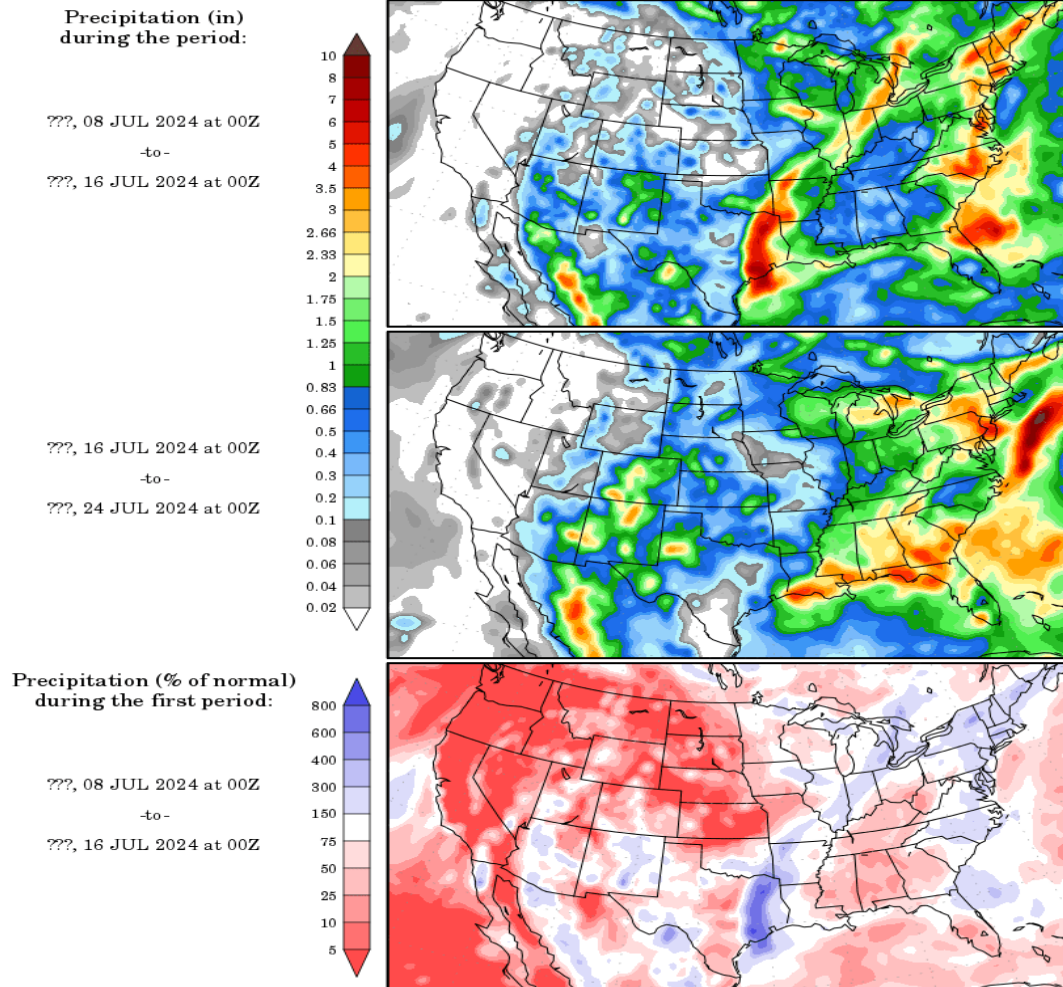
Dec24 Daily: Contract status sideways R6100/R6300



Weather

US Medium-term Precipitation Forecasts: US Corn moving into pollination

Precipitation Forecasts



Precipitation forecasts from the National Centers for Environmental Prediction.
Normal rainfall derived from Xie-Arkin (CMAP) Monthly Climatology for 1979-2003.
Forecast Initialization Time: 00Z08JUL2024

GrADS/COLA