

Daily market
Report
16 Jul 24

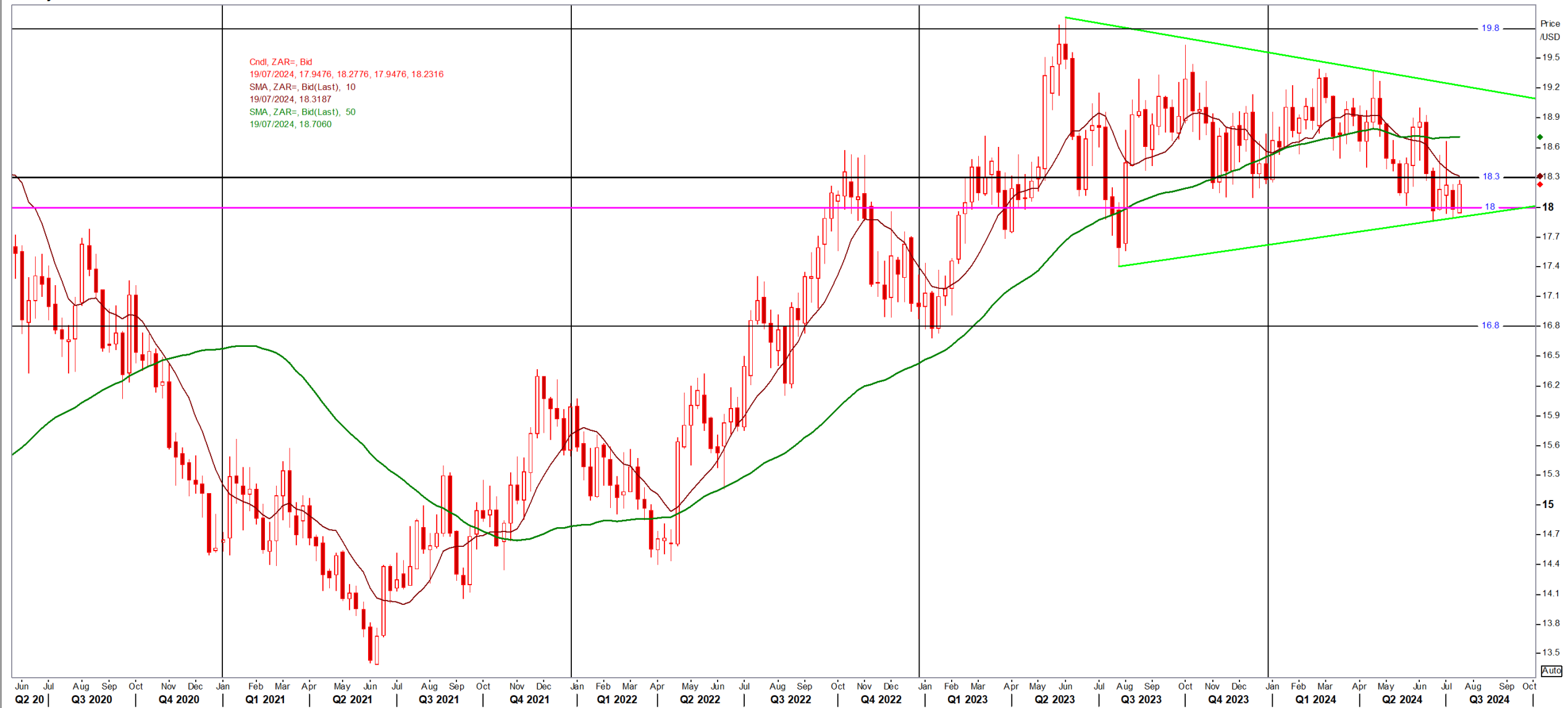


Parity Movements (implied price moves)

USA Movement (Overnight)	Cents	Currencies	16/Jul/24	07:36:09	
CORN CBOT (Dec24)	406.25	-3.75 R/\$ last	18.2306	0.0574	
SOY CBOT (Nov24)	1,042.00	-7.75 Euro=	1.0887	-0.0024	
W1 CBOT (Dec24)	557.25	-6.00 GOLD	2,431	20.2000	
W2 KCBT (Dec24)	574.00	-1.00 BRENT	84.56	-0.61	
BlackSea Wheat (Near)	209.00	-4.00			
Index Change					
Maize (Dec24)	2,916	R -17.65	Wheat CBOT (Dec24)	3,733	-R28.31
Soya (Nov24)	6,979	R -29.77	Wheat Kansas (Dec24)	3,845	R 5.43
BlackSea Wheat Near	3,810	R -60.70	RAND EFFECT ON WHEAT PARITY	3,852	R 12.13

South African Rand (ZAR)

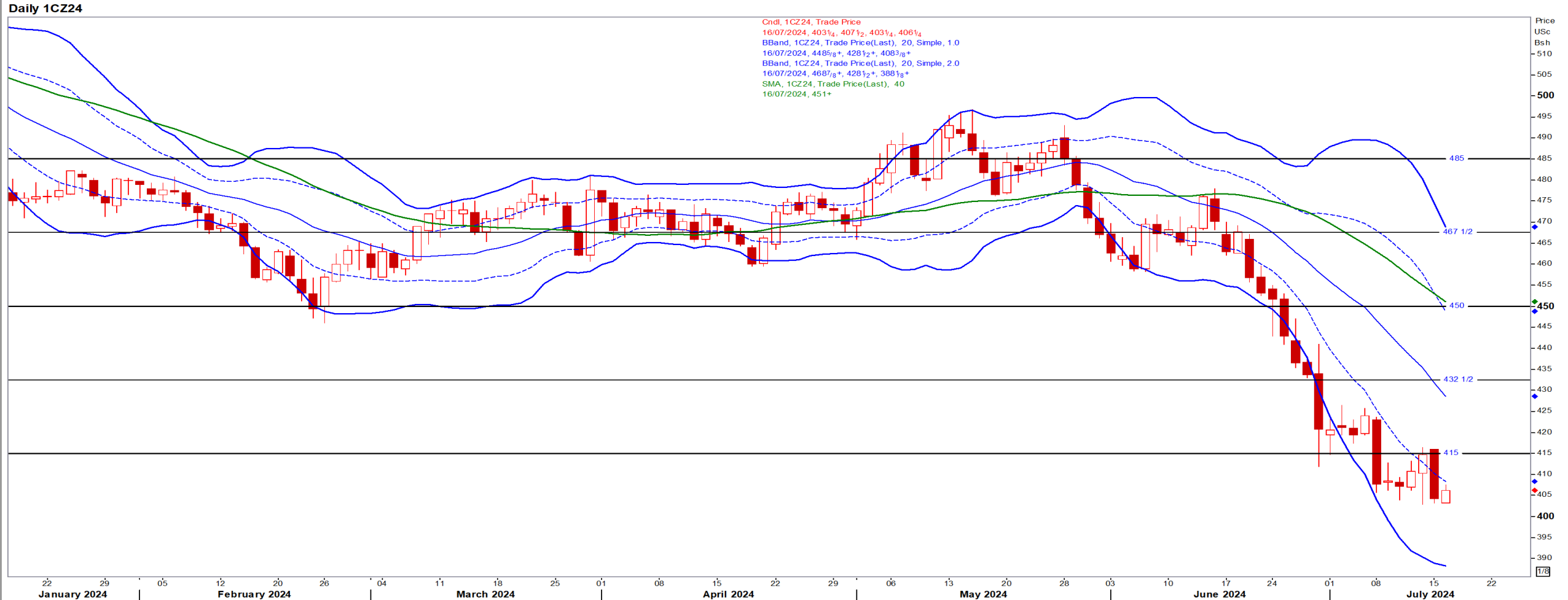
Weekly ZAR=



USA Corn

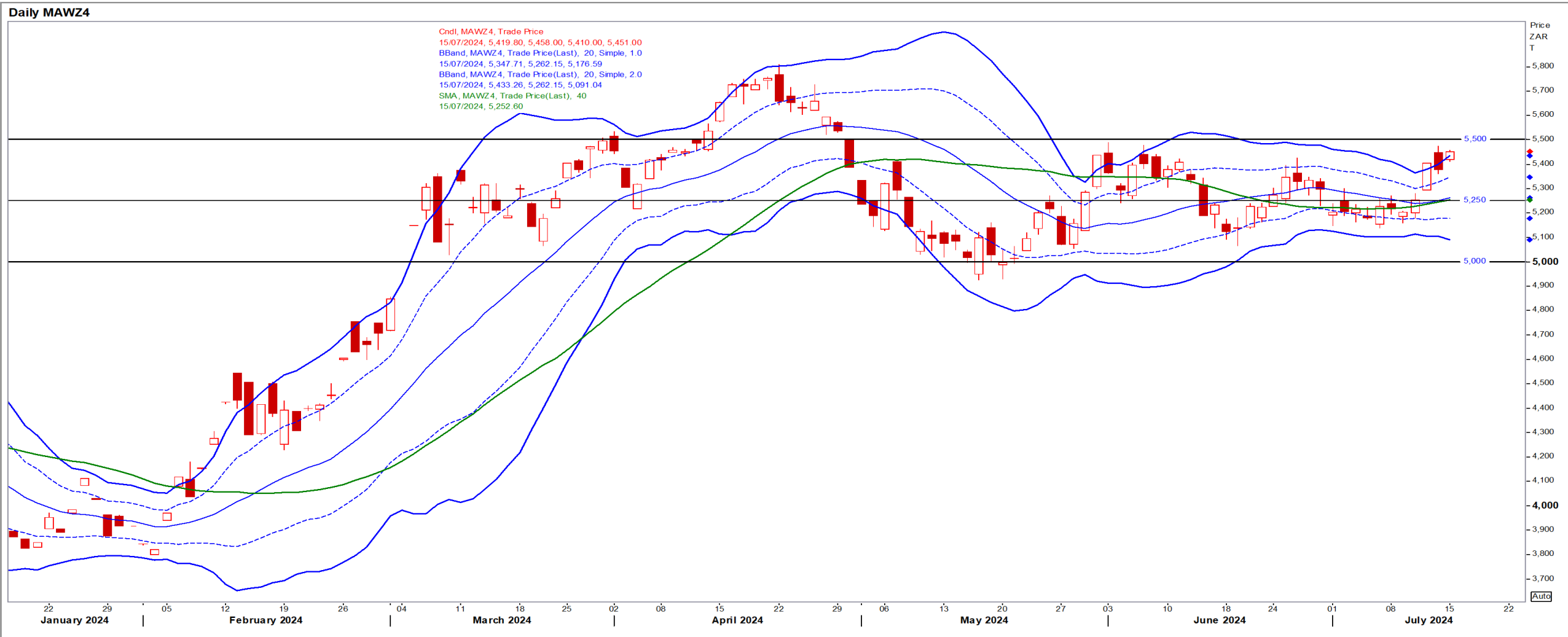
Dec24 Daily: Contract status very bearish < \$4.50

- Corn ended lower as Midwest rains favoured US production prospects and analysts worried about demand for the plentiful supplies – Reuters News.



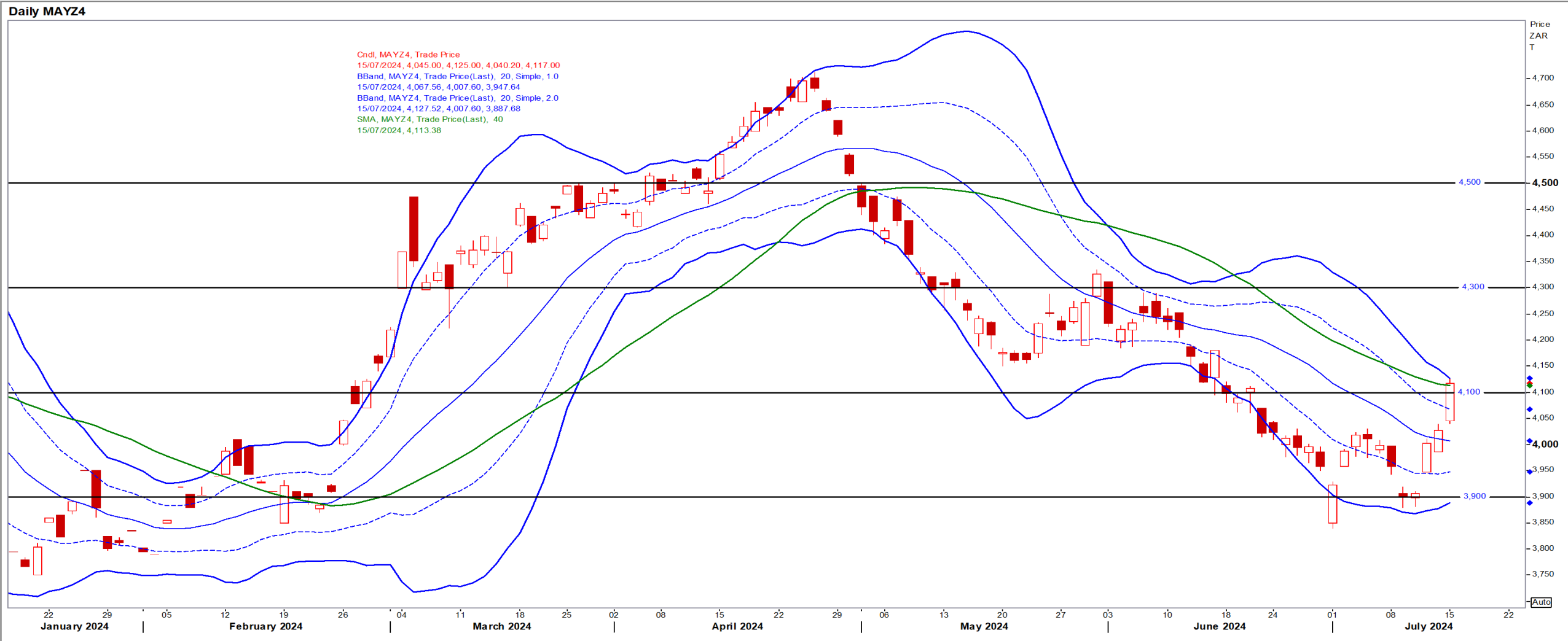
White Maize

Dec24 Daily: Contract status bullish > R5250



Yellow Maize

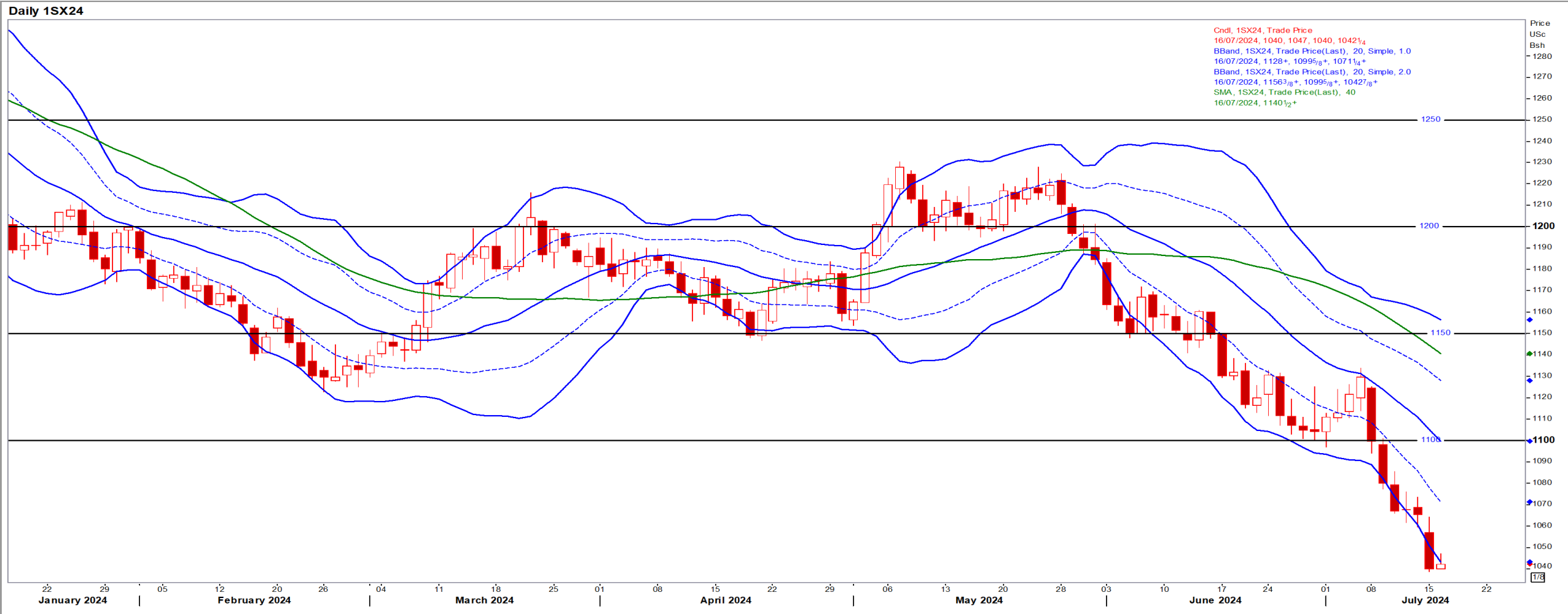
Dec24 Daily: Contract status very bullish > R4100



USA Soya

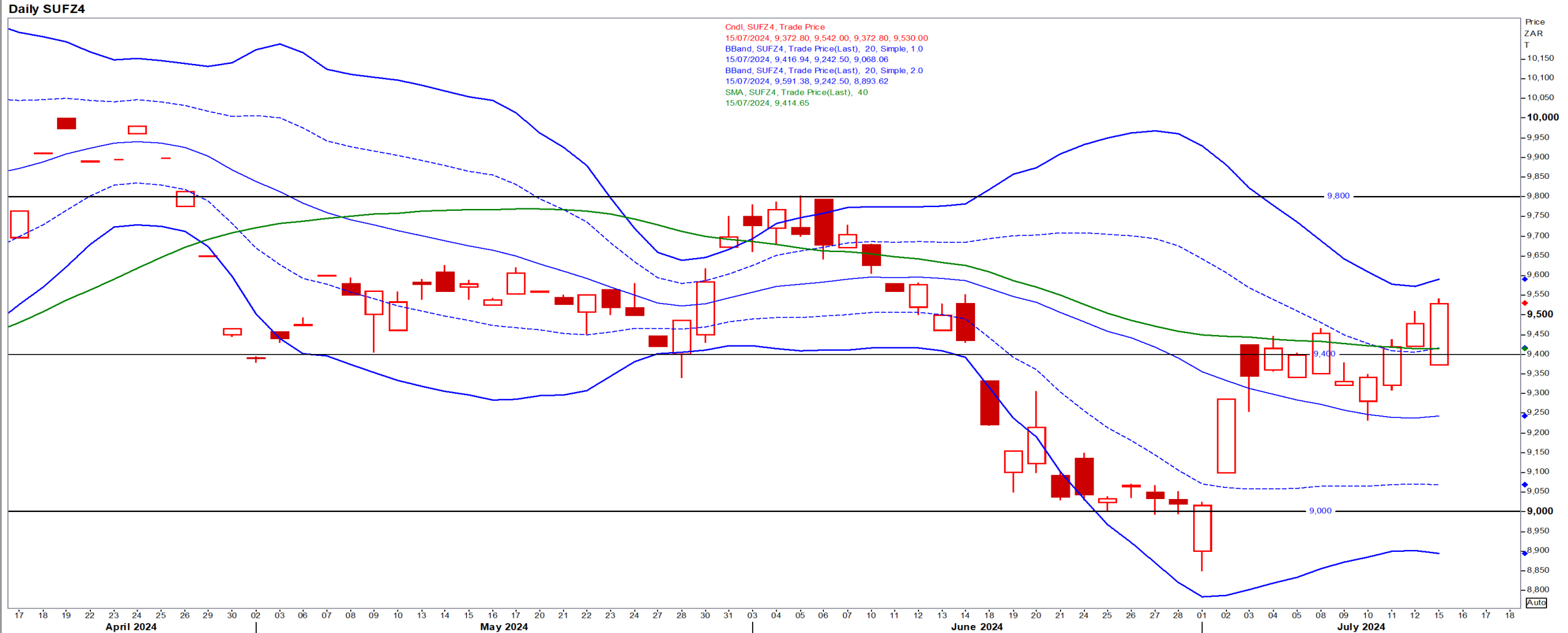
Nov24 Daily: Contract status very bearish < \$11.50

- Rainfall in the north-central Midwest over-performed expectations and favoured corn and soybeans – Reuters News.



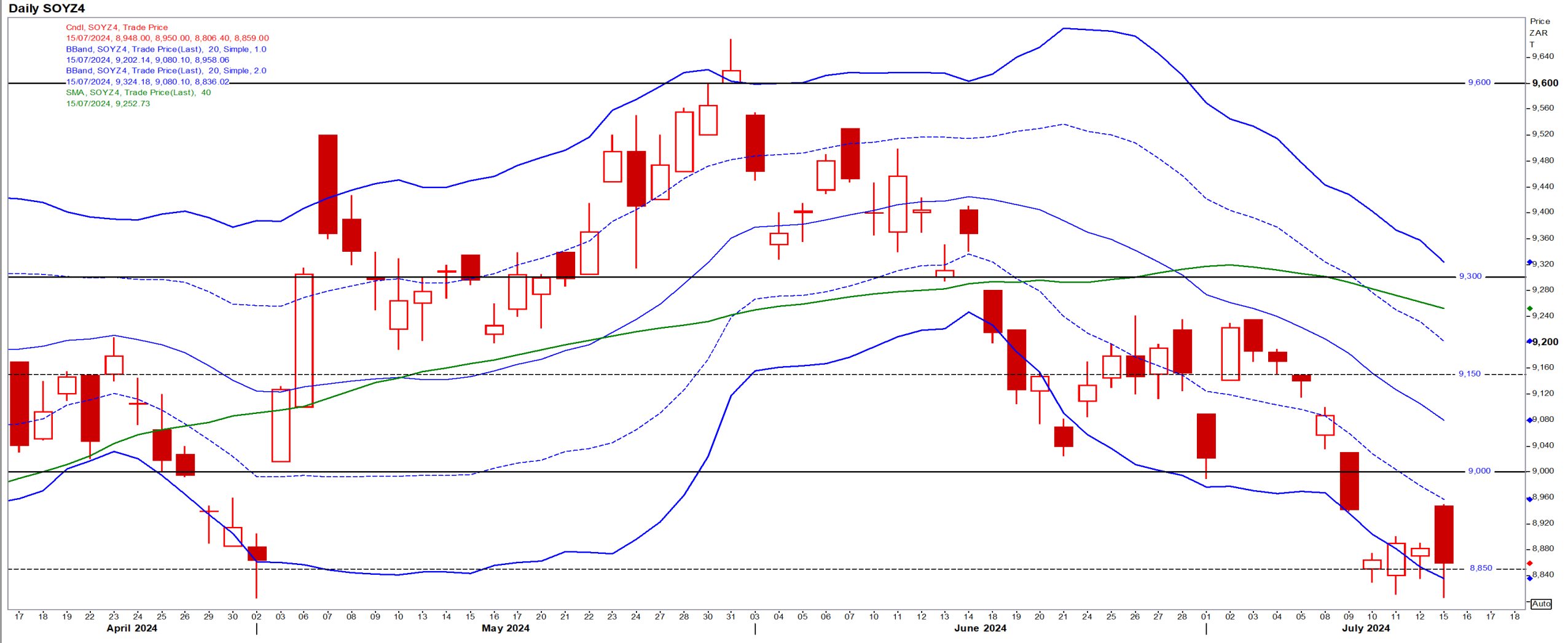
Suns

Dec24 Daily: Contract status bullish > R9400



SA Soya

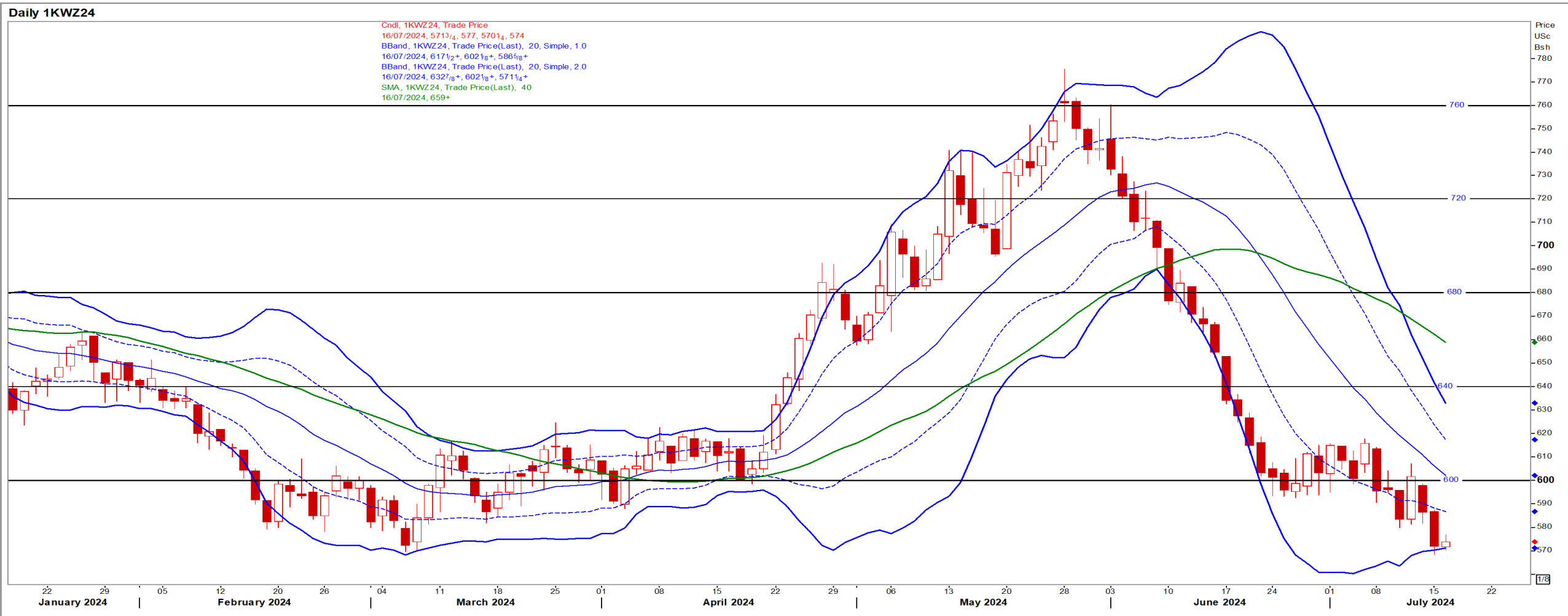
Dec24 Daily: Contract status very bearish < R9300



US KANSAS Wheat

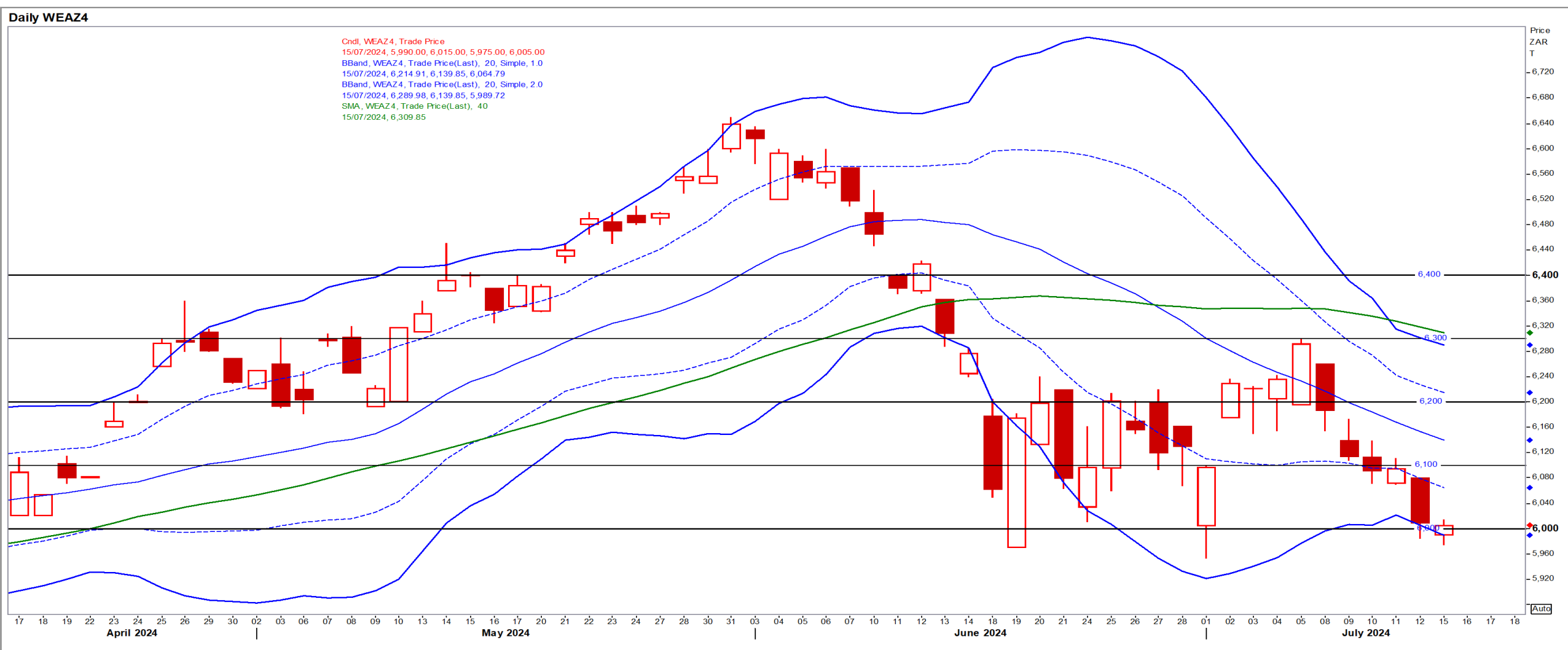
Dec24 Daily: Contract status very bearish < \$6.70

- Wheat fell to contract lows on seasonal pressure from the Northern Hemisphere harvest and prospects of large crops in the US and Russia – Reuters News.



SA Wheat

Dec24 Daily: Contract status bearish < R6100



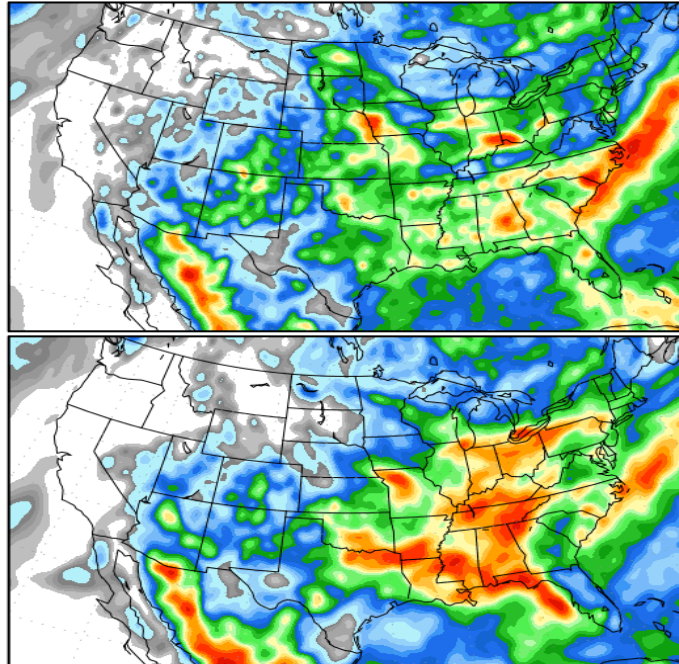
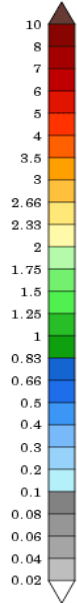
Weather

US Medium-term Precipitation Forecasts: US Corn moving into pollination

Precipitation Forecasts

Precipitation (in) during the period:

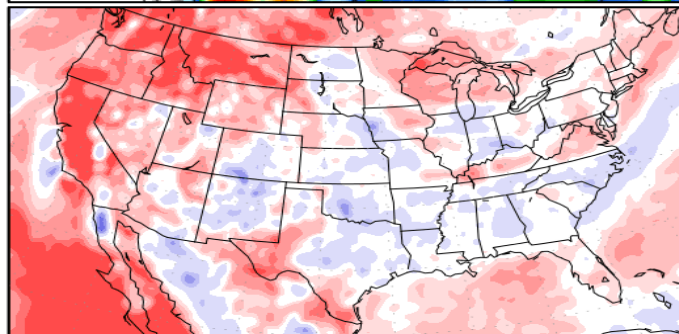
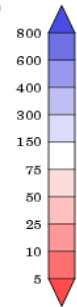
???, 15 JUL 2024 at 00Z
-to-
???, 23 JUL 2024 at 00Z



???, 23 JUL 2024 at 00Z
-to-
???, 31 JUL 2024 at 00Z

Precipitation (% of normal) during the first period:

???, 15 JUL 2024 at 00Z
-to-
???, 23 JUL 2024 at 00Z



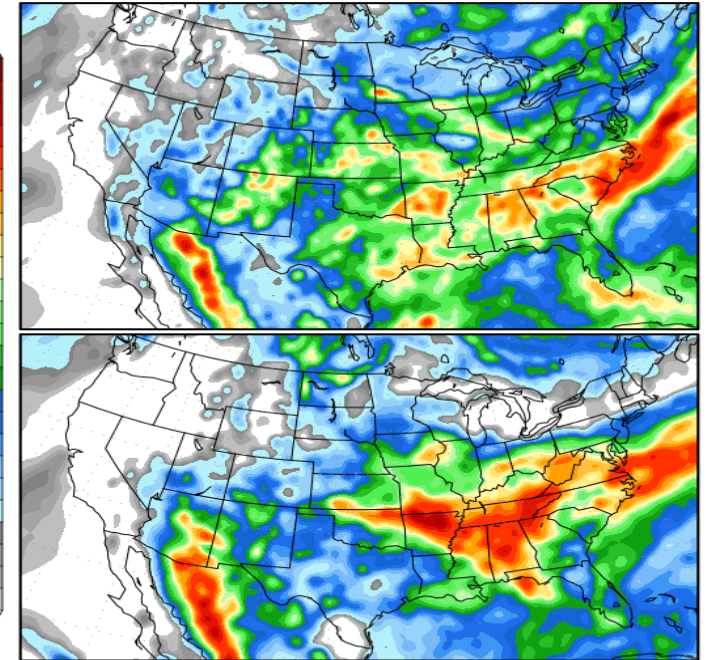
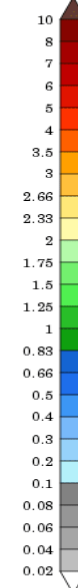
Precipitation forecasts from the National Centers for Environmental Prediction.
Normal rainfall derived from Xie-Arkin (CMAP) Monthly Climatology for 1979-2003.
Forecast Initialization Time: 00Z15JUL2024

GrADS/COLA

Precipitation Forecasts

Precipitation (in) during the period:

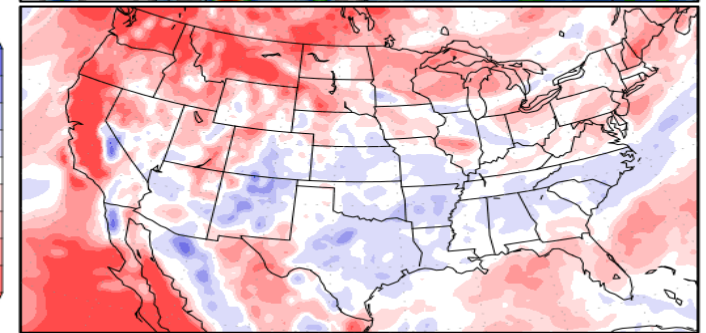
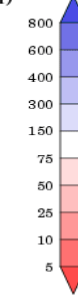
???, 15 JUL 2024 at 12Z
-to-
???, 23 JUL 2024 at 12Z



???, 23 JUL 2024 at 12Z
-to-
???, 31 JUL 2024 at 12Z

Precipitation (% of normal) during the first period:

???, 15 JUL 2024 at 12Z
-to-
???, 23 JUL 2024 at 12Z



Precipitation forecasts from the National Centers for Environmental Prediction.
Normal rainfall derived from Xie-Arkin (CMAP) Monthly Climatology for 1979-2003.
Forecast Initialization Time: 12Z15JUL2024

GrADS/COLA

