

Daily market
Report
17 Jul 24



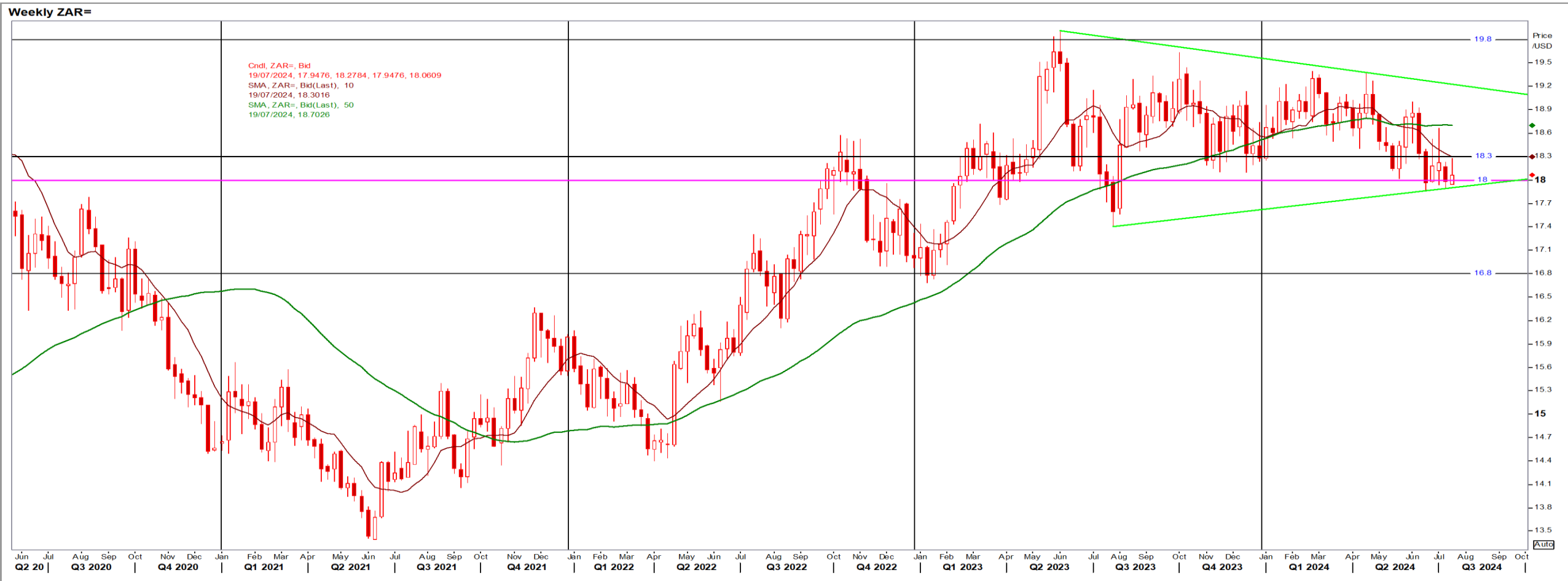
Parity Movements (implied price moves)

USA Movement (Overnight)	Cents	Currencies	17/Jul/24	07:47:33	
CORN CBOT (Dec24)	410.50	2.50	R/\$ last	18.0640	-0.0367
SOY CBOT (Nov24)	1,044.50	0.75	Euro=	1.0904	0.0007
W1 CBOT (Dec24)	558.50	-2.25	GOLD	2,467	25.2900
W2 KCBT (Dec24)	570.75	-4.25	BRENT	83.63	-0.64
BlackSea Wheat (Near)	209.00	0.00			
Index Change					
Maize (Dec24)	2,919	R 11.88	Wheat CBOT (Dec24)	3,707	-R22.50
Soya (Nov24)	6,932	R -9.10	Wheat Kansas (Dec24)	3,788	R -35.96
BlackSea Wheat Near	3,775	R -7.67	RAND EFFECT ON WHEAT PARITY	3,816	-R 7.75

South African Rand (ZAR)

USD/ZAR Weekly: Bullish < R18.30

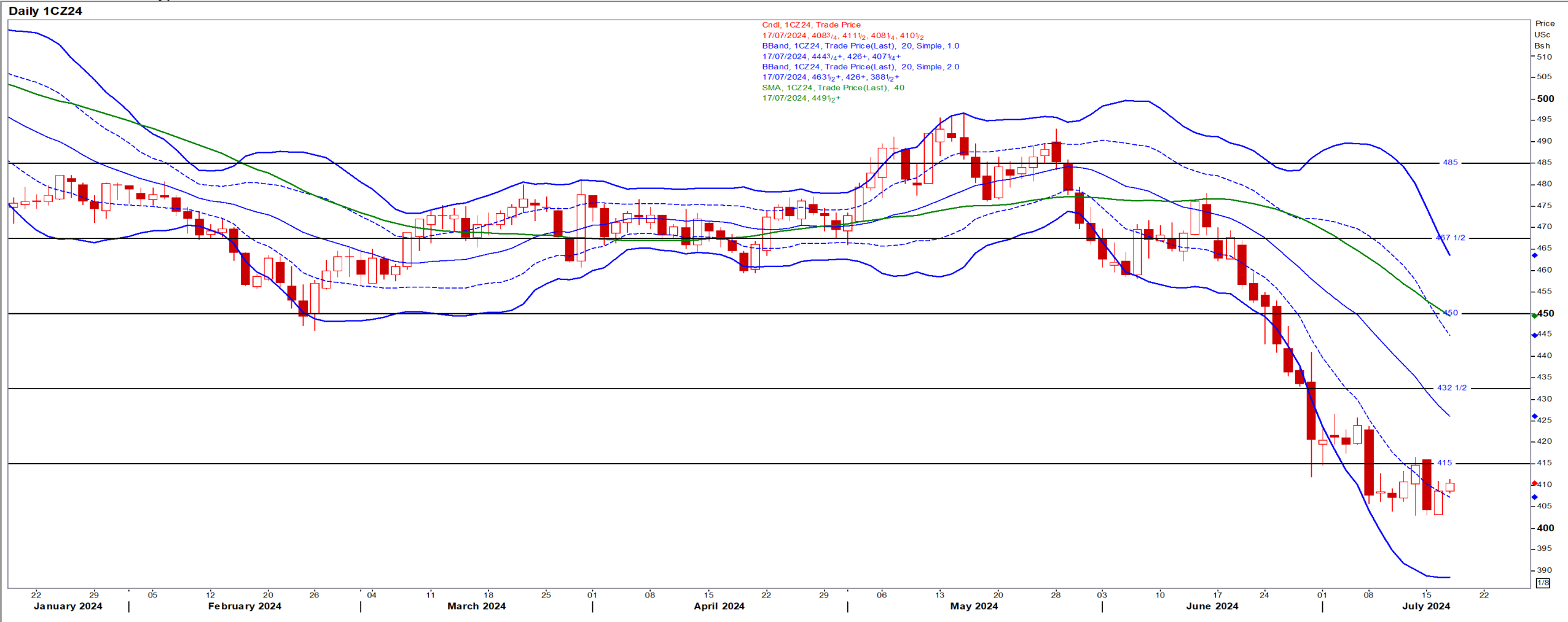
- ZAR weakened [$> R18$] as the attempt on Donald Trump's life dented appetite for riskier assets and spurred safe-haven demand – Reuters News.
- Stronger than R18.30 the short-term ZAR is bullish with the overall long-term picture ZAR bearish.



USA Corn

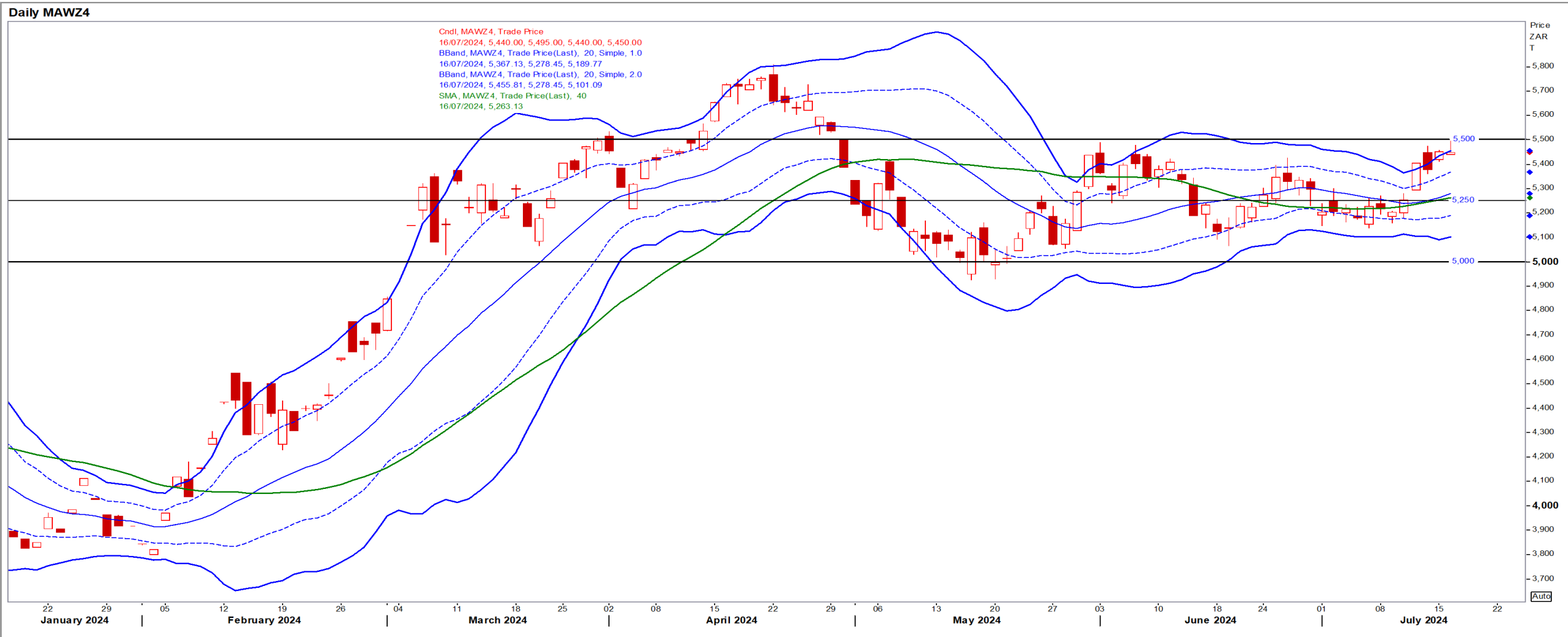
Dec24 Daily: Contract status very bearish < \$4.50

- Corn gained ground on bargain buying after several contracts set new lows and because of crop estimates that fell in some parts of the world – Reuters



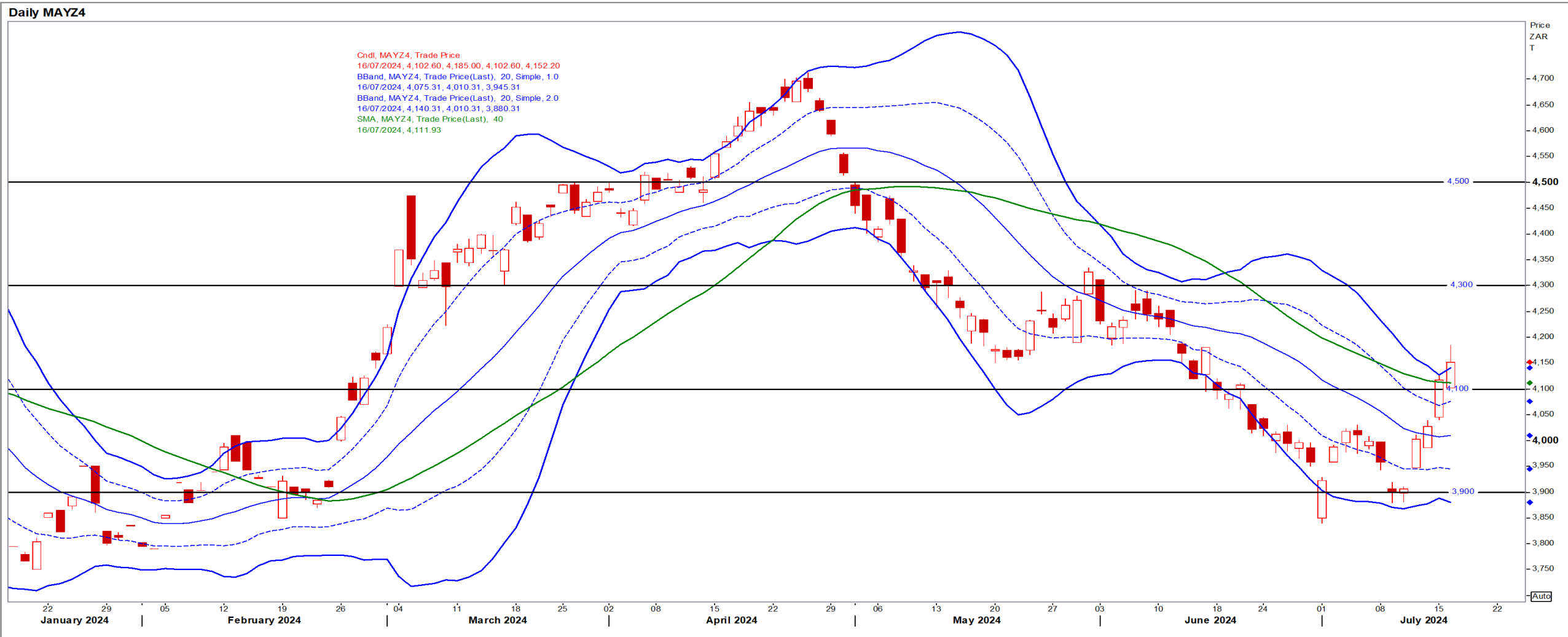
White Maize

Dec24 Daily: Contract status bullish > R5250



Yellow Maize

Dec24 Daily: Contract status bullish > R4100



USA Soya

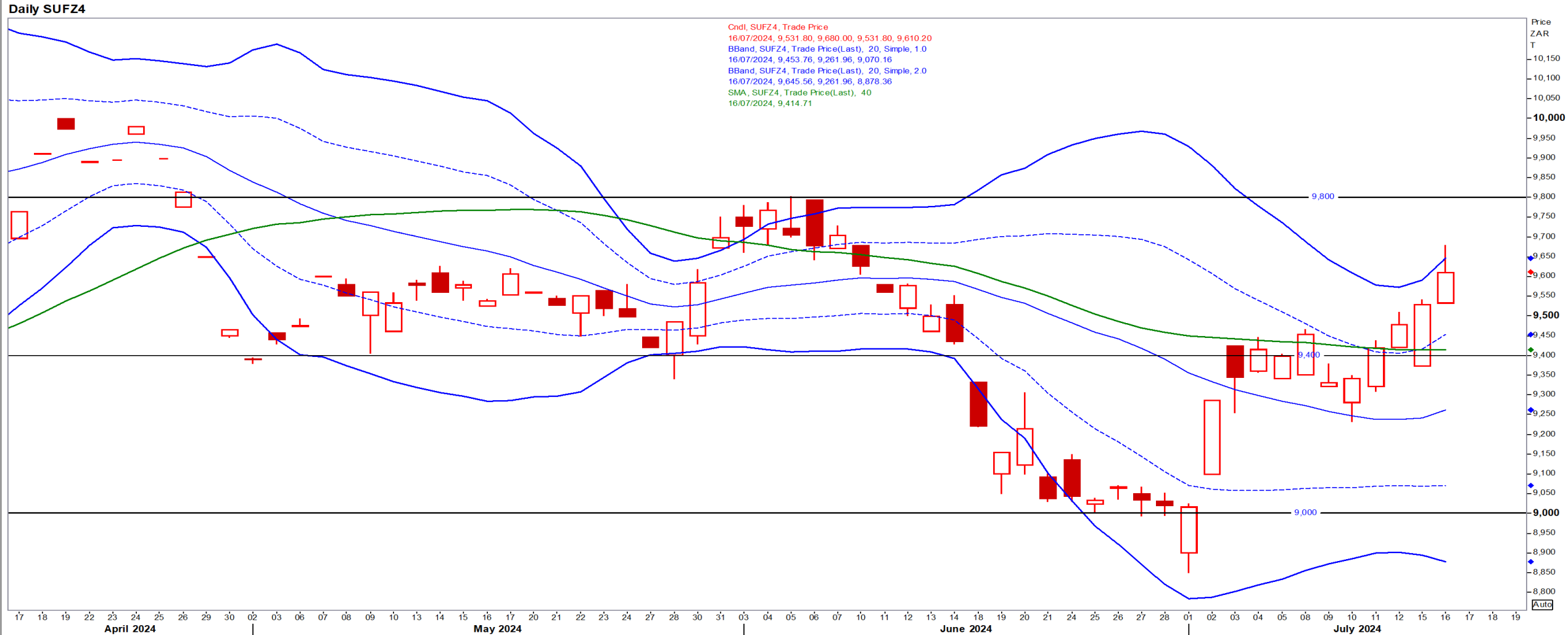
Nov24 Daily: Contract status very bearish < \$11.50

- Beans recovered on bargain buying after falling to their lowest levels in four years because of strong US crop production prospects – Reuters News.



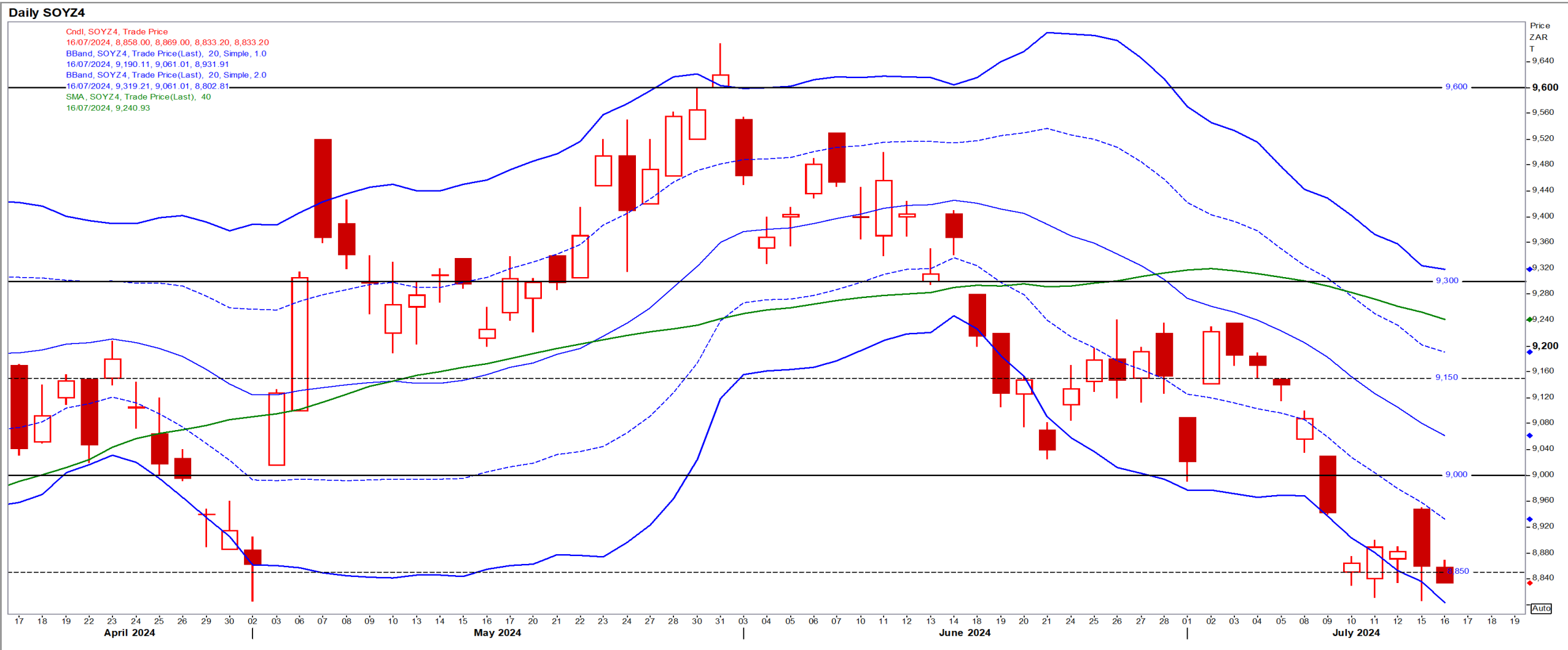
Suns

Dec24 Daily: Contract status bullish > R9400



SA Soya

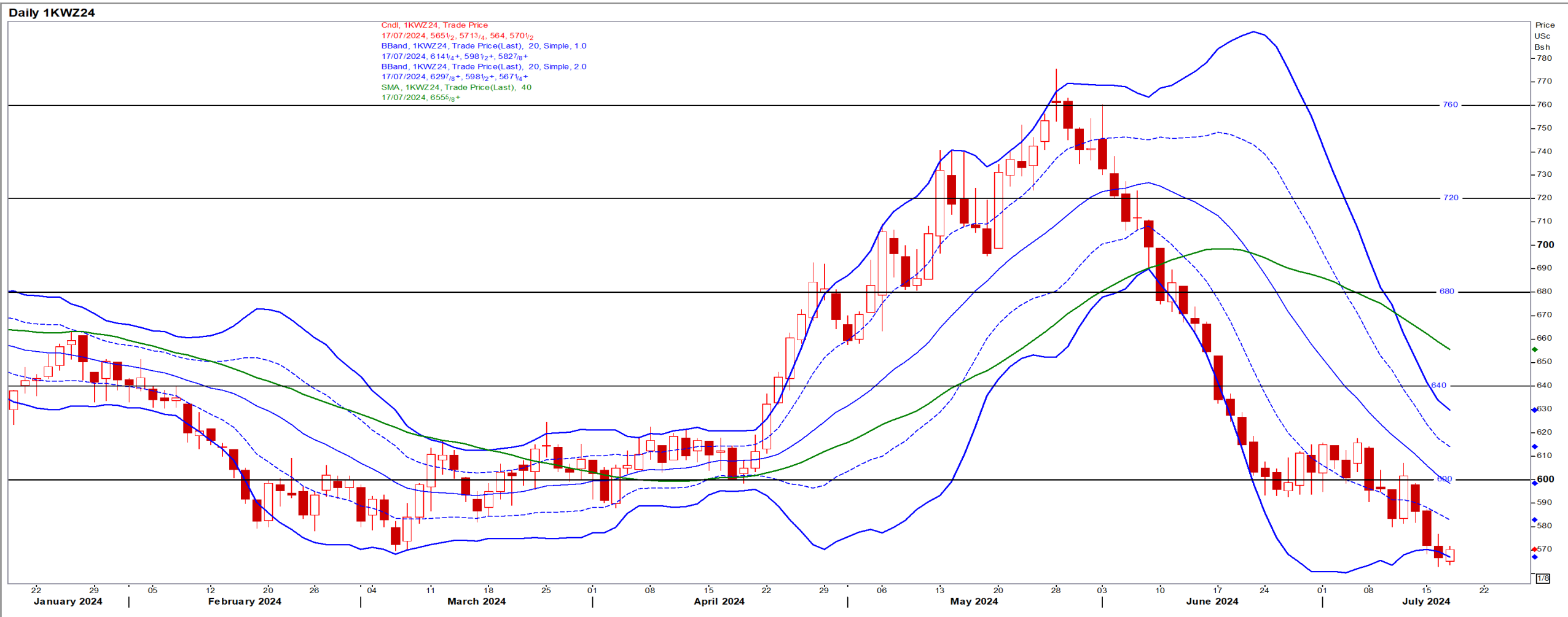
Dec24 Daily: Contract status very bearish < R9300



US KANSAS Wheat

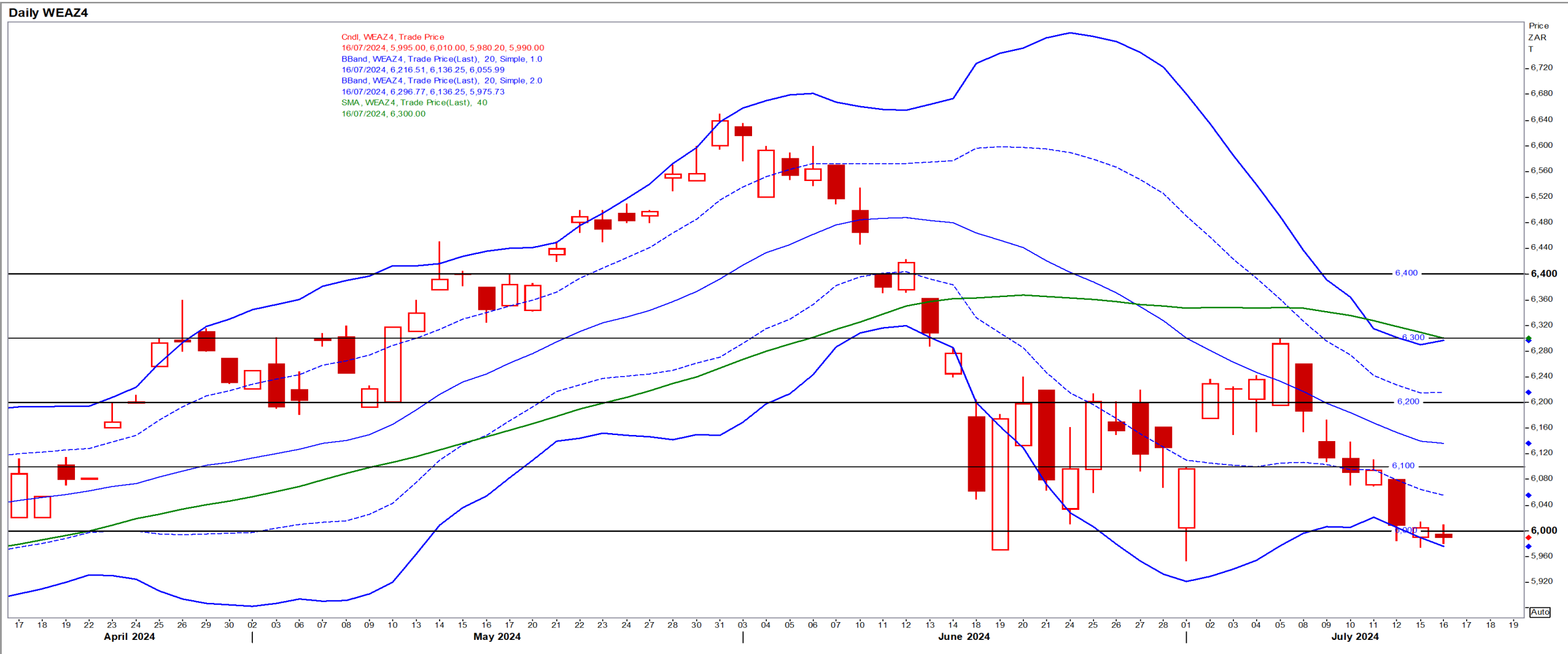
Dec24 Daily: Contract status very bearish < \$6.70

- Wheat rose for the 1st time in 4 sessions on strong global demand although ample world supplies are likely to limit upside potential – Reuters News.



SA Wheat

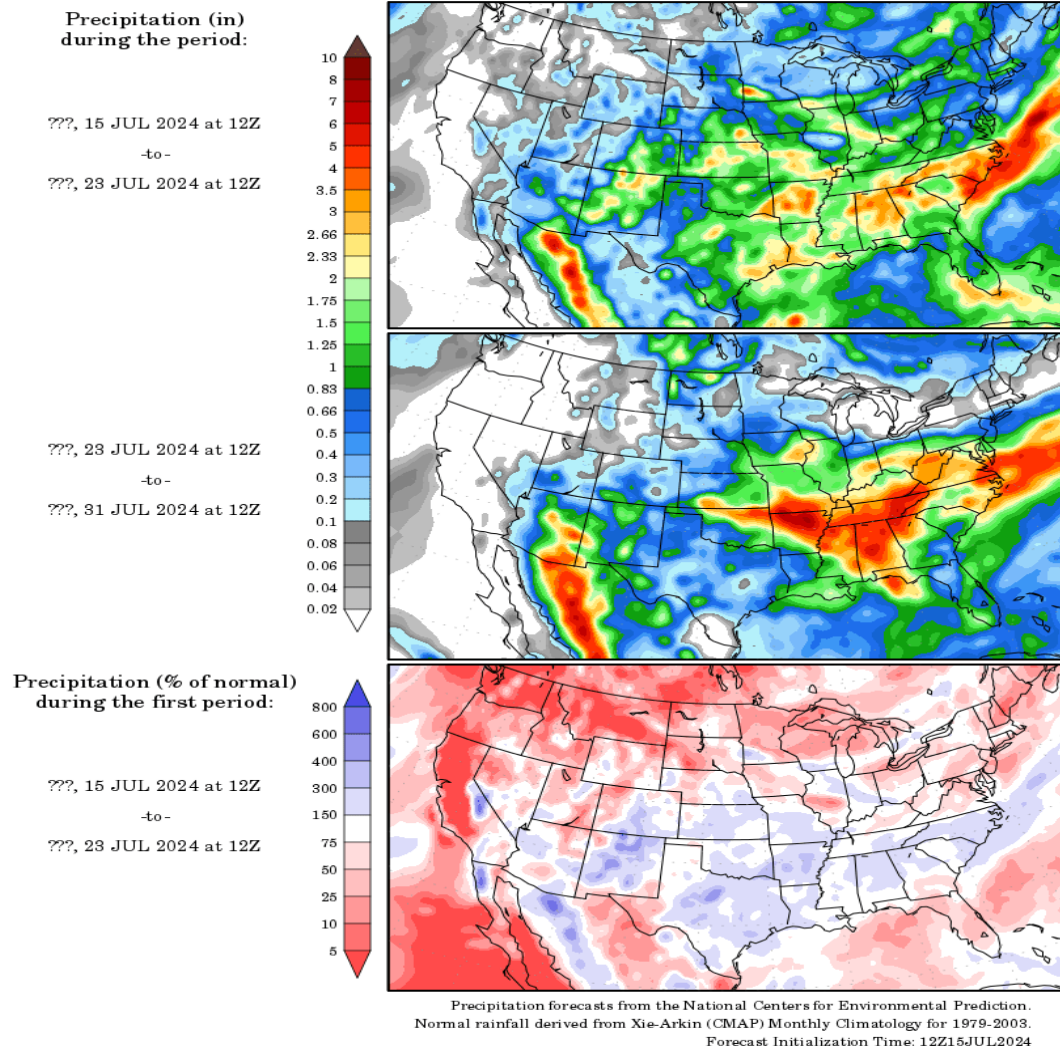
Dec24 Daily: Contract status bearish < R6100



Weather

US Medium-term Precipitation Forecasts: US Corn moving into pollination

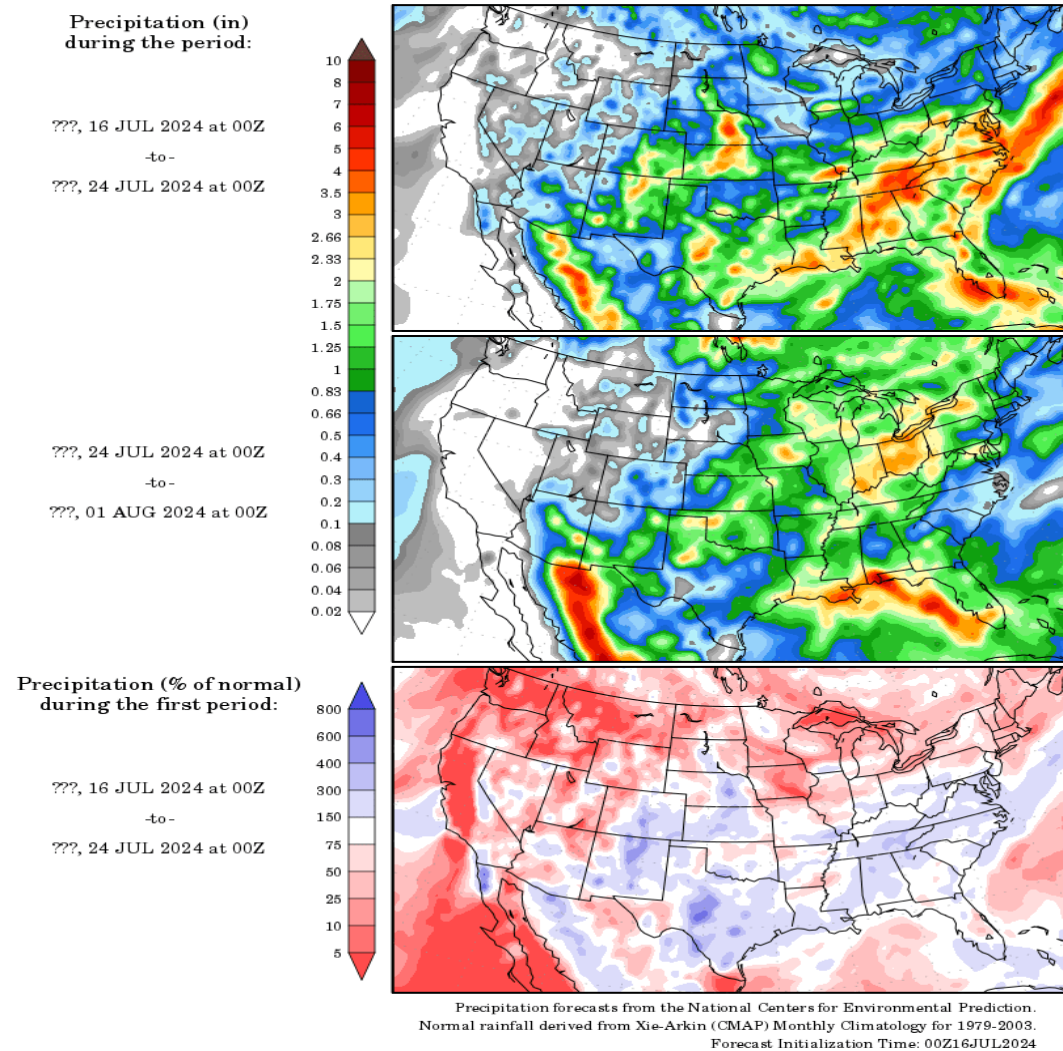
Precipitation Forecasts



GrADS/COLA

GrADS/COLA

Precipitation Forecasts



GrADS/COLA