

Daily market  
Report  
24 Jul 24



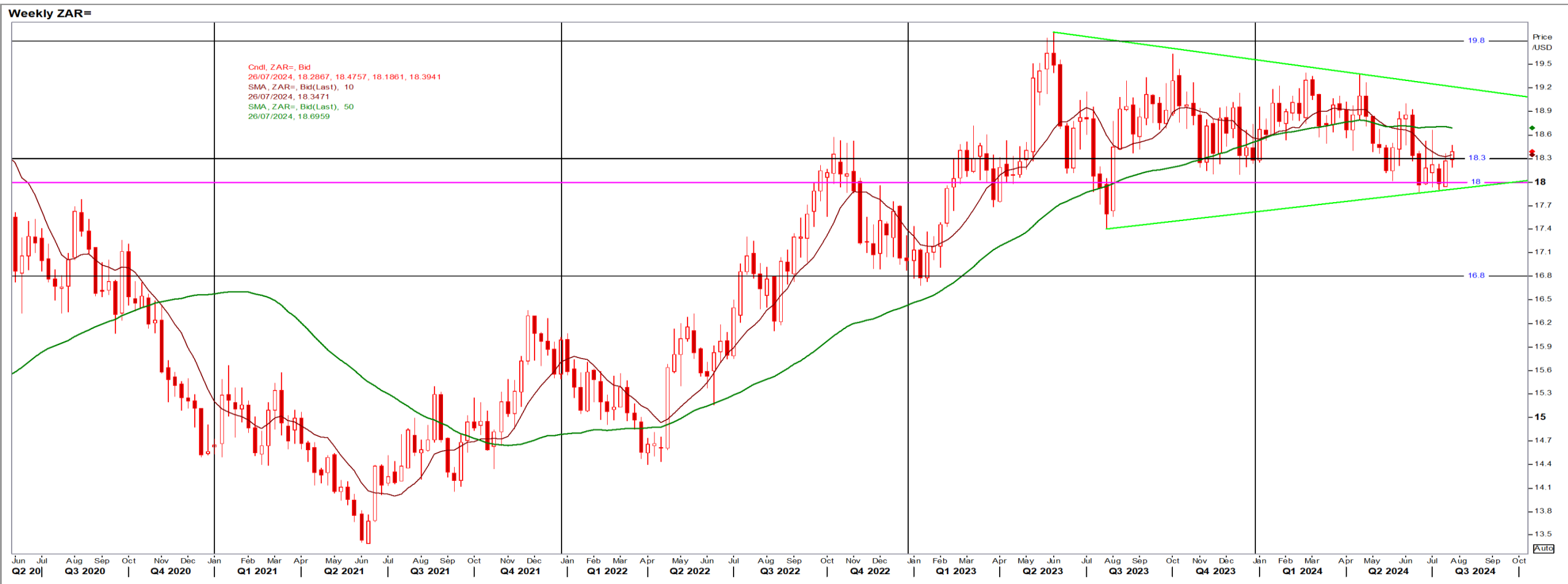
# Parity Movements (implied price moves)

USA Movement (Overnight)	Cents	Currencies	24/Jul/24	07:49:07	
<b>CORN CBOT (Dec24)</b>	415.00	1.25	<b>R/\$ last</b>	18.3908	0.0438
<b>SOY CBOT (Nov24)</b>	1,064.75	-4.75	<b>Euro=</b>	1.0850	-0.0017
<b>W1 CBOT (Dec24)</b>	565.00	-2.25	<b>GOLD</b>	2,416	9.0800
<b>W2 KCBT (Dec24)</b>	579.25	-2.00	<b>BRENT</b>	81.24	-1.37
<b>BlackSea Wheat (Near)</b>	219.00	0.00			
<b>Index Change</b>					
<b>Maize (Dec24)</b>	3,005	R 16.18	<b>Wheat CBOT (Dec24)</b>	3,818	-R6.08
<b>Soya (Nov24)</b>	7,194	R -14.88	<b>Wheat Kansas (Dec24)</b>	3,914	R -4.16
<b>BlackSea Wheat Near</b>	4,028	R 9.59	<b>RAND EFFECT ON WHEAT PARITY</b>	3,928	R 9.35

# South African Rand (ZAR)

USD/ZAR Weekly: Bearish > R18.30

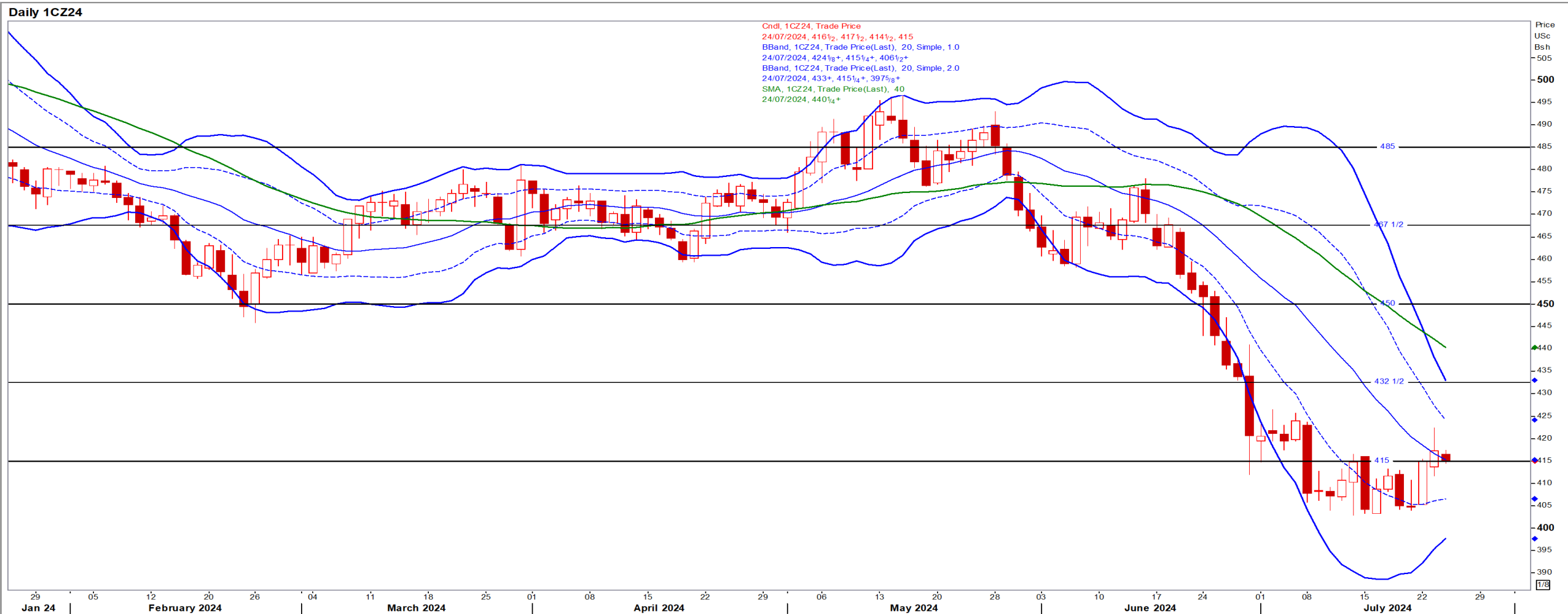
- ZAR weakened as investors look towards June inflation data out today and developments in the US presidential race – Reuters News.
- Stronger than R18.30 the short-term ZAR is bullish with the overall long-term picture ZAR bearish.



# USA Corn

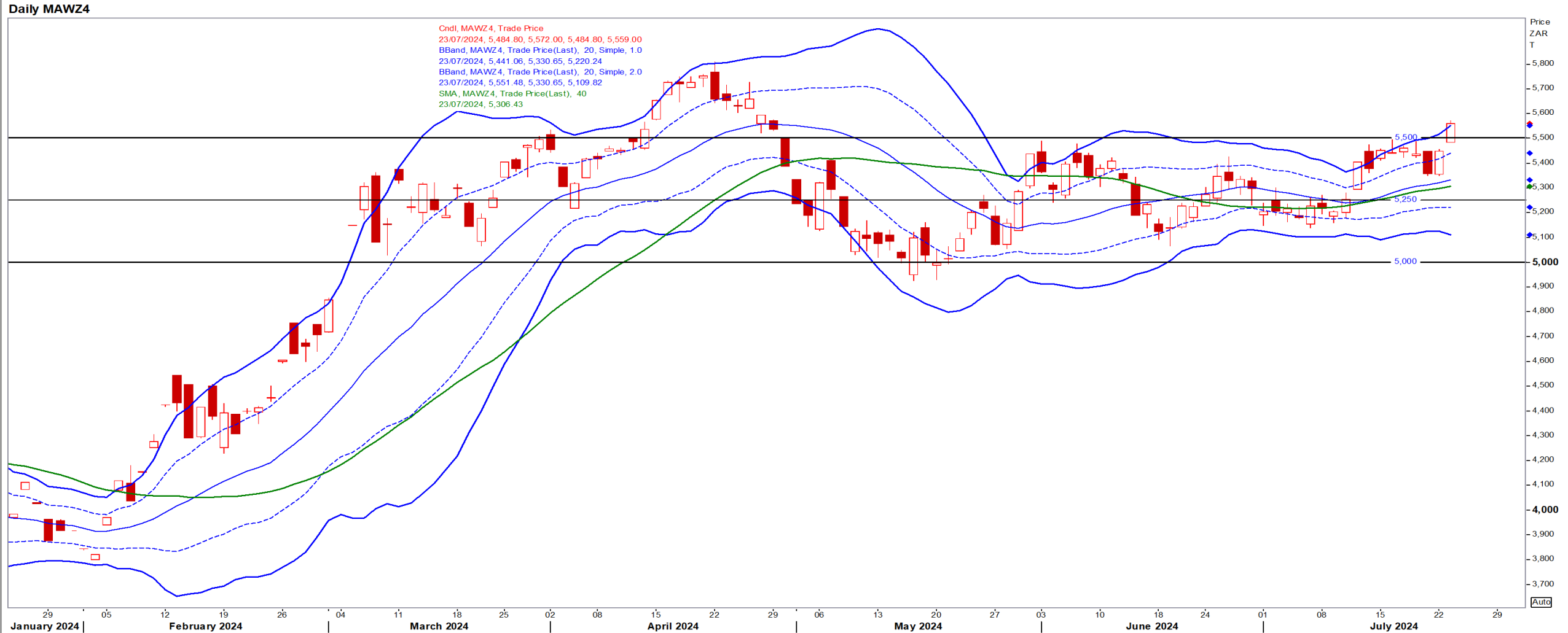
Dec24 Daily: Contract status very bearish < \$4.50

- Corn futures reached a two-week high as traders focus on weather-related impacts on the US crop and short-covering – Reuters News.



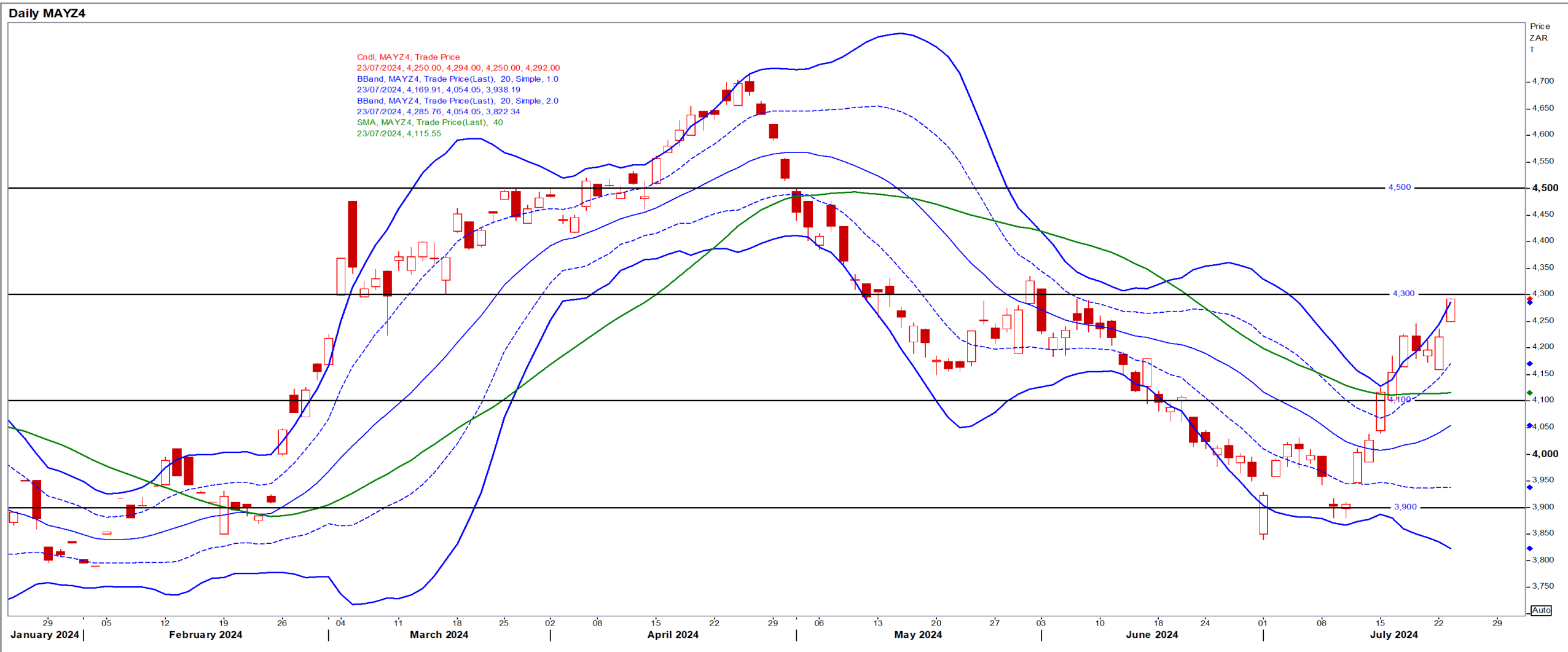
# White Maize

Dec24 Daily: Contract status very bullish > R5300



# Yellow Maize

Dec24 Daily: Contract status bullish > R4100



# USA Soya

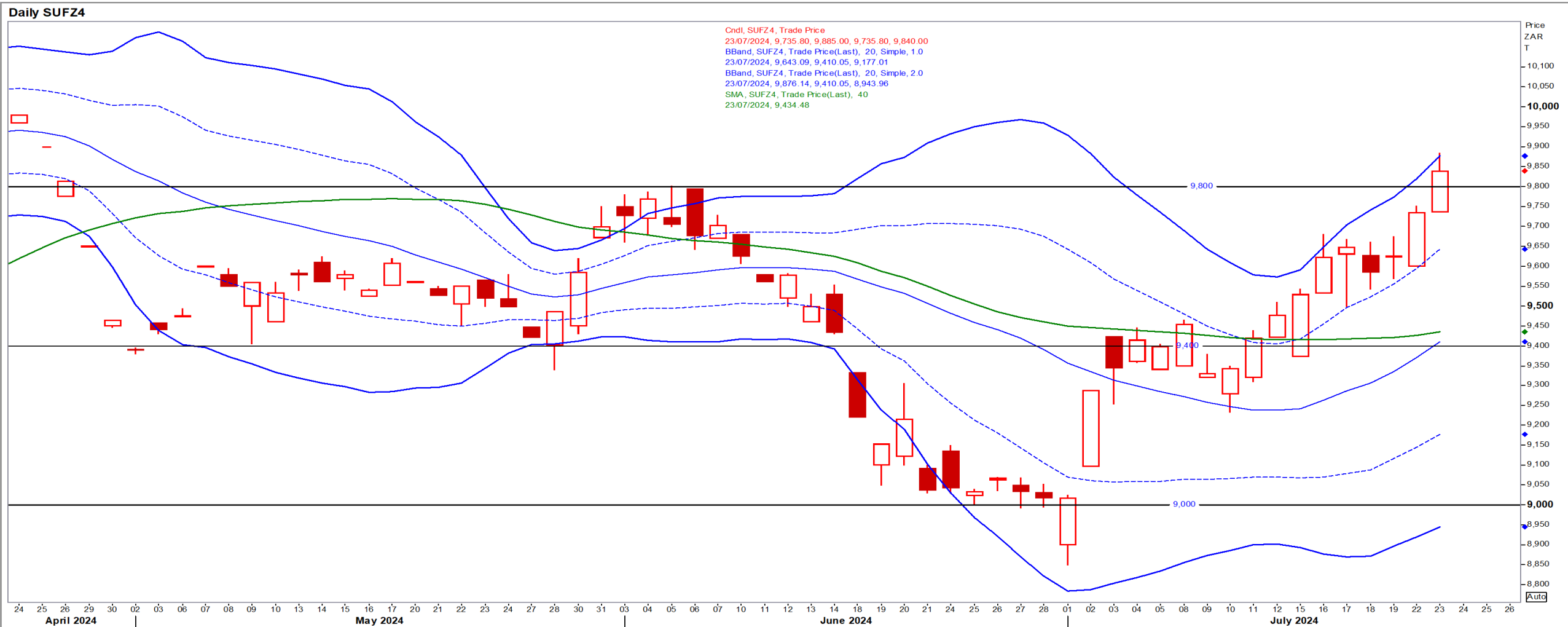
Nov24 Daily: Contract status very bearish < \$11.20

- Beans fell as a rally fuelled by adverse weather ran out of steam and investors refocused on expectations of plentiful global supplies – Reuters News.



# Suns

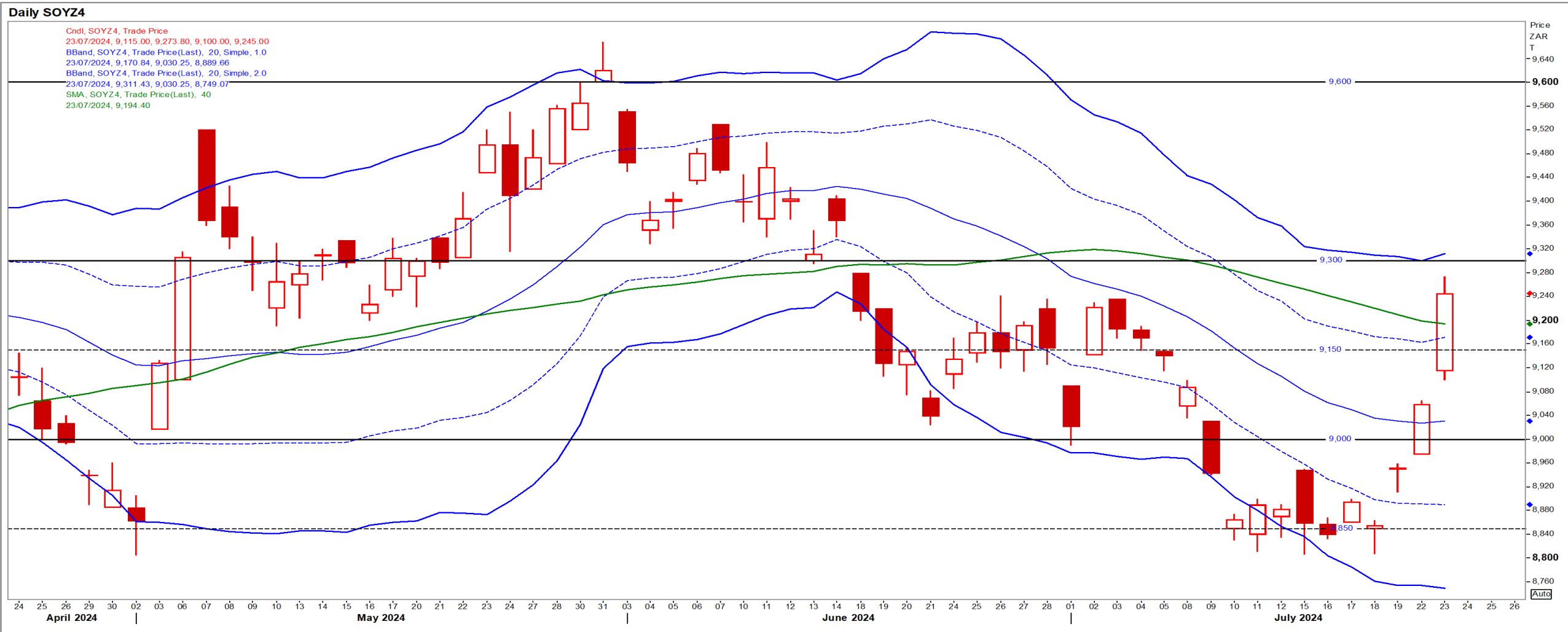
Dec24 Daily: Contract status very bullish > R9450





# SA Soya

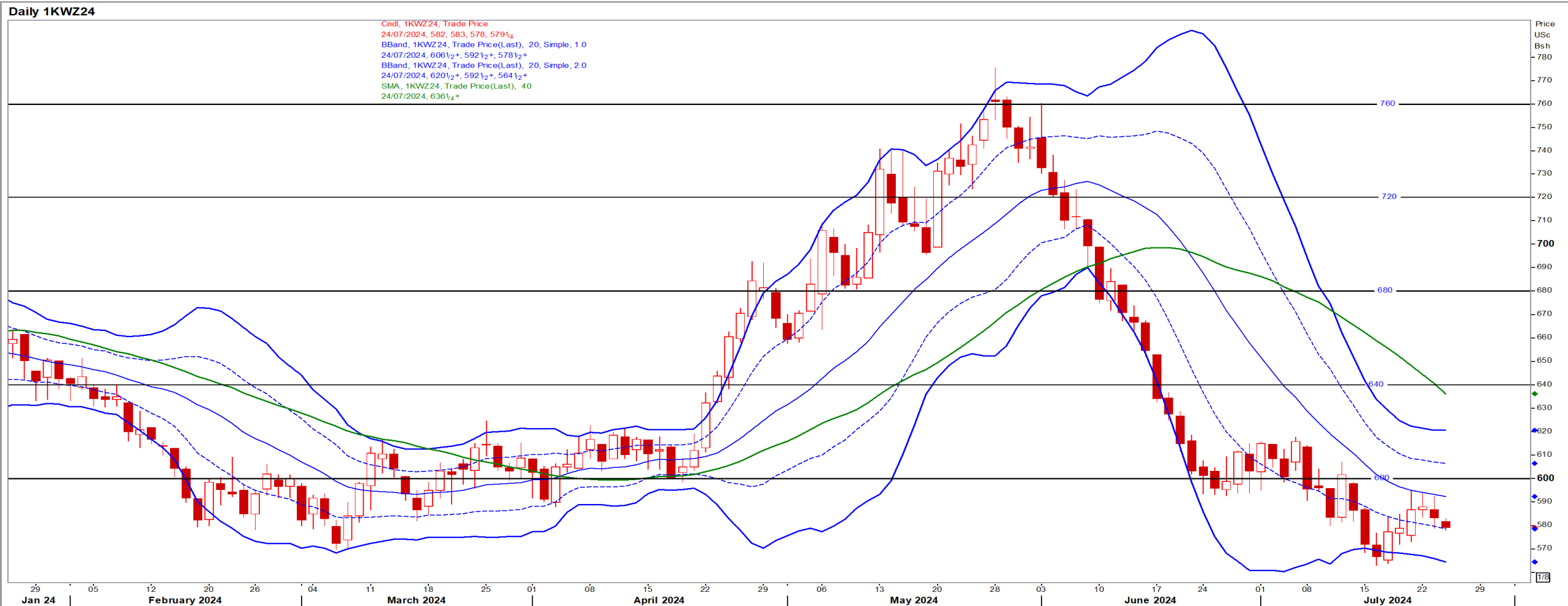
Dec24 Daily: Contract status bullish > R9200



# US KANSAS Wheat

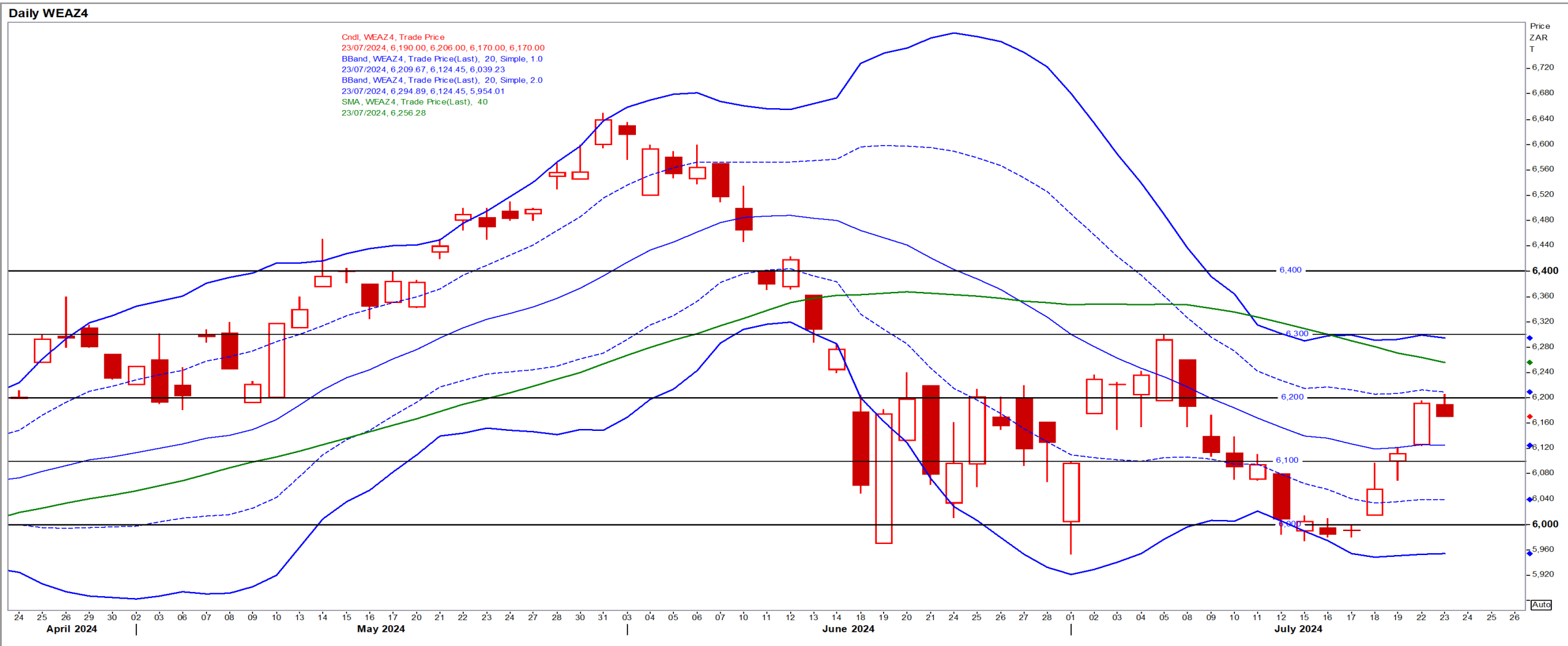
Dec24 Daily: Contract status very bearish < \$6.50

- Annual US crop tour projects spring wheat in North Dakota to produce highest yields in tour records dating to 1994 – Reuters News.



# SA Wheat

Dec24 Daily: Contract status sideways in-between R6100/R6300



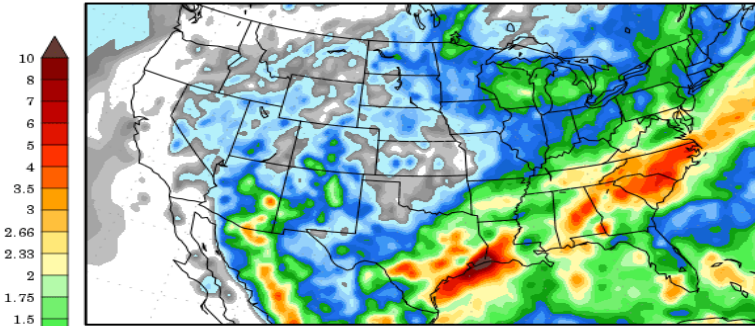
# Weather

## US Medium-term Precipitation Forecasts: US Corn in final pollination (61% completed)

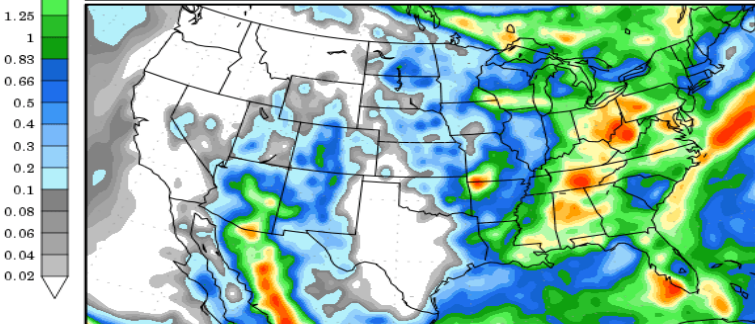
### Precipitation Forecasts

Precipitation (in) during the period:

???, 22 JUL 2024 at 00Z  
-to-  
???, 30 JUL 2024 at 00Z

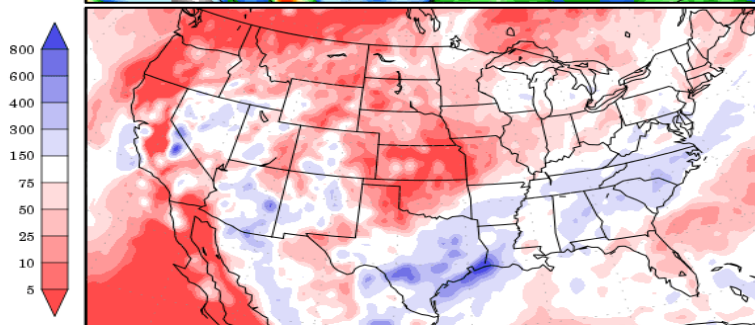


???, 30 JUL 2024 at 00Z  
-to-  
???, 07 AUG 2024 at 00Z



Precipitation (% of normal) during the first period:

???, 22 JUL 2024 at 00Z  
-to-  
???, 30 JUL 2024 at 00Z



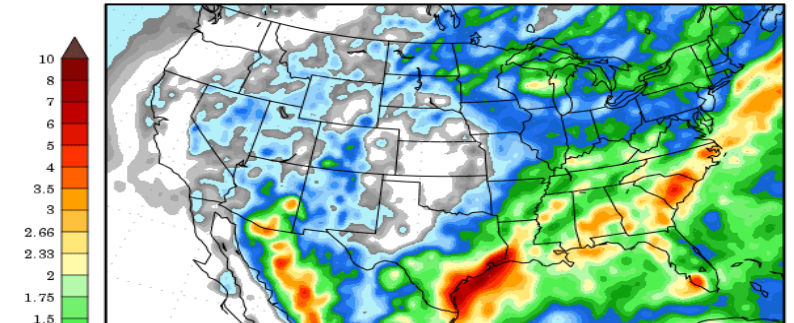
Precipitation forecasts from the National Centers for Environmental Prediction.  
Normal rainfall derived from Xie-Arkin (CMAP) Monthly Climatology for 1979-2003.  
Forecast Initialization Time: 00Z22JUL2024

GrADS/COLA

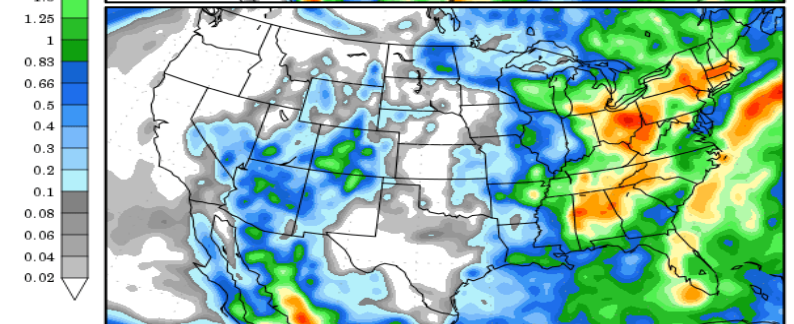
### Precipitation Forecasts

Precipitation (in) during the period:

???, 23 JUL 2024 at 00Z  
-to-  
???, 31 JUL 2024 at 00Z

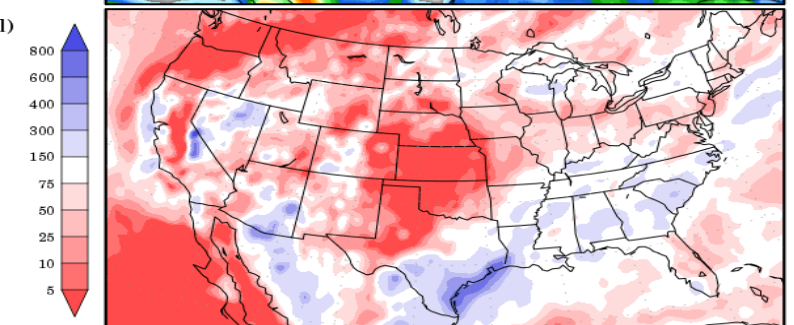


???, 31 JUL 2024 at 00Z  
-to-  
???, 08 AUG 2024 at 00Z



Precipitation (% of normal) during the first period:

???, 23 JUL 2024 at 00Z  
-to-  
???, 31 JUL 2024 at 00Z



Precipitation forecasts from the National Centers for Environmental Prediction.  
Normal rainfall derived from Xie-Arkin (CMAP) Monthly Climatology for 1979-2003.  
Forecast Initialization Time: 00Z23JUL2024

GrADS/COLA