

Daily market
Report
23 Sep 24



Parity Movements (implied price moves)

USA Movement (Overnight)	Cents	Currencies	23/Sep/24	07:34:28	
CORN CBOT (Dec24)	405.50	-0.50	R/\$ last	17.3837	-0.1823
SOY CBOT (Nov24)	1,024.25	7.50	Euro=	1.1164	0.0004
W1 CBOT (Dec24)	575.25	4.25	GOLD	2,628	20.8850
W2 KCBT (Dec24)	571.50	1.75	BRENT	75.02	0.33
BlackSea Wheat (Near)	212.00	0.00			
Index Change					
Maize (Dec24)	2,775	R -32.56	Wheat CBOT (Dec24)	3,674	-R11.10
Soya (Nov24)	6,542	R -20.20	Wheat Kansas (Dec24)	3,650	R -26.99
BlackSea Wheat Near	3,685	R -38.65	RAND EFFECT ON WHEAT PARITY	3,639	-R 38.16

USA Corn

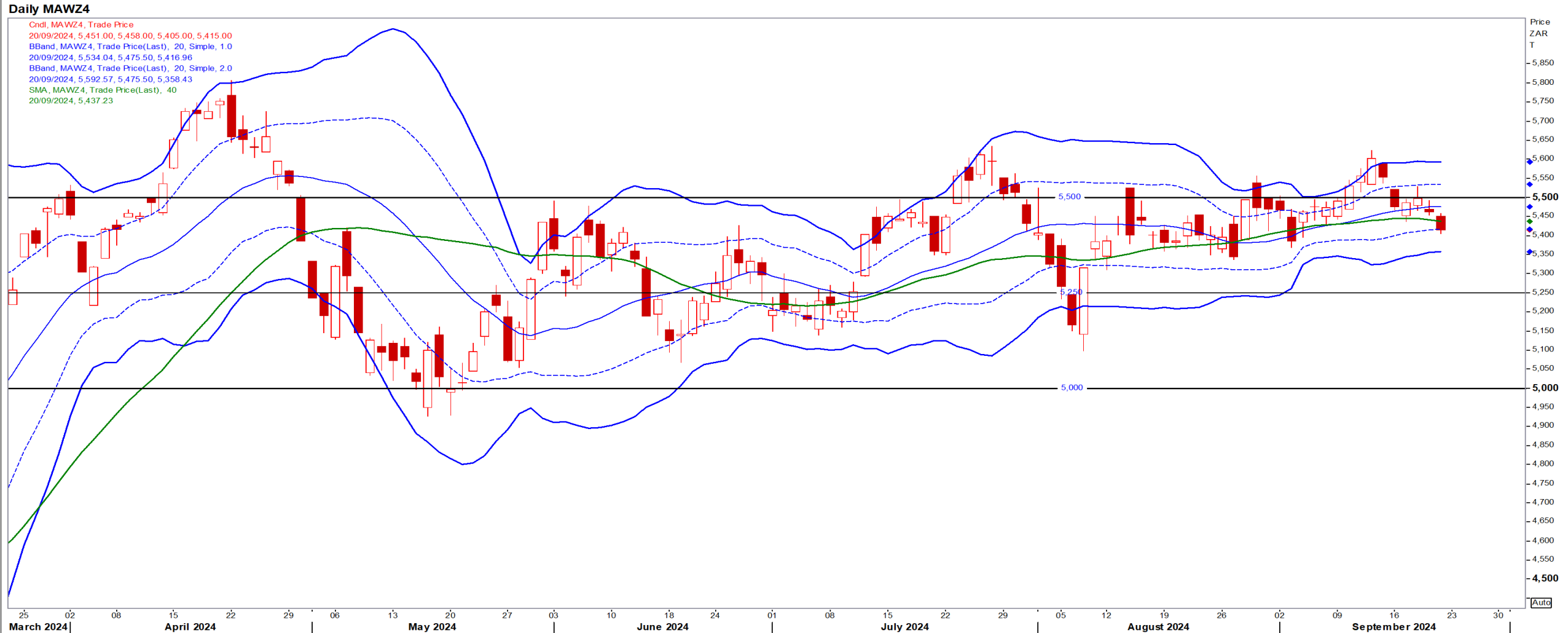
Dec24 Daily: Contract status very bearish < \$4.15

- Corn drifter lower from the expanding US harvest (warm, dry weather in the Corn Belt speed up crop maturity and harvest) – Reuters News.



White Maize

Dec24 Daily: Contract status bullish > R5250



Yellow Maize

Dec24 Daily: Contract status bullish > R4100



USA Soya

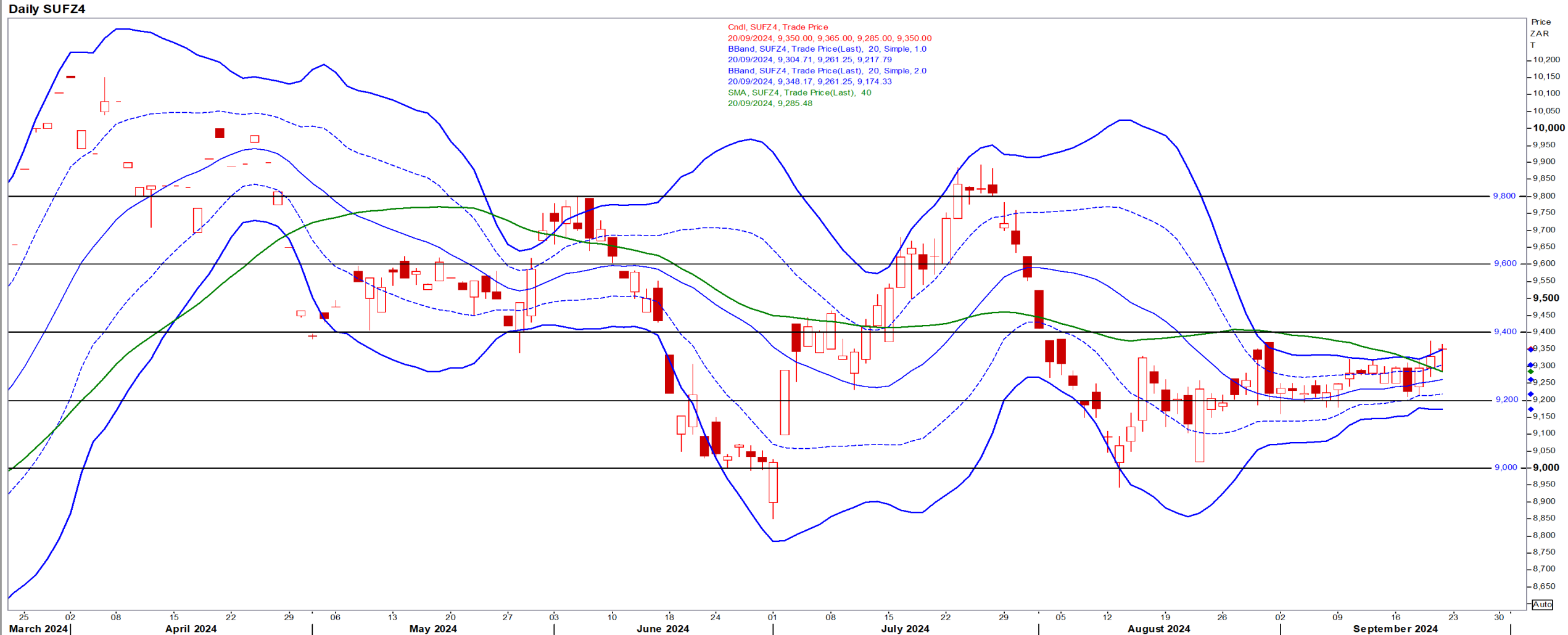
Nov24 Daily: Contract status very bearish < \$10.50

- Beans rose, underpinned by dry weather delaying planting in the world's biggest exporter Brazil – Reuters News.



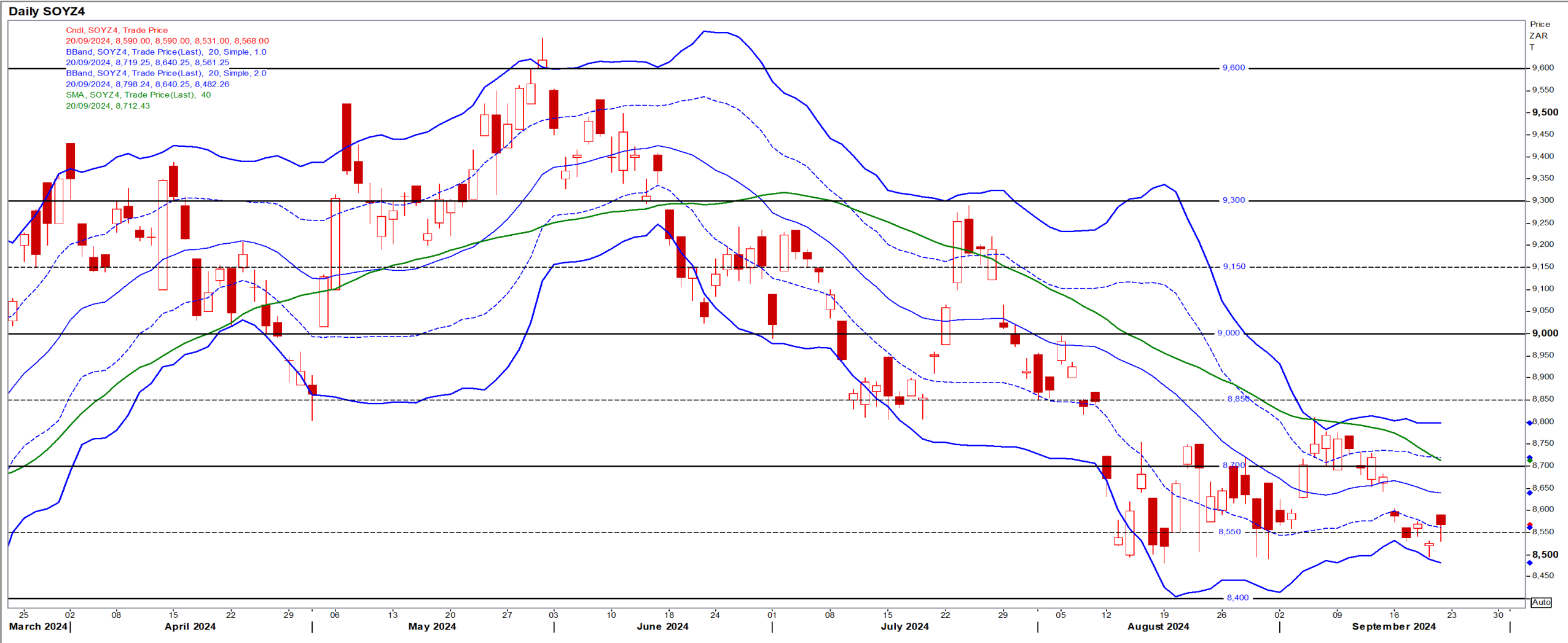
Suns

Dec24 Daily: Contract status bearish < R9400



SA Soya

Dec24 Daily: Contract status very bearish < R8700



US KANSAS Wheat

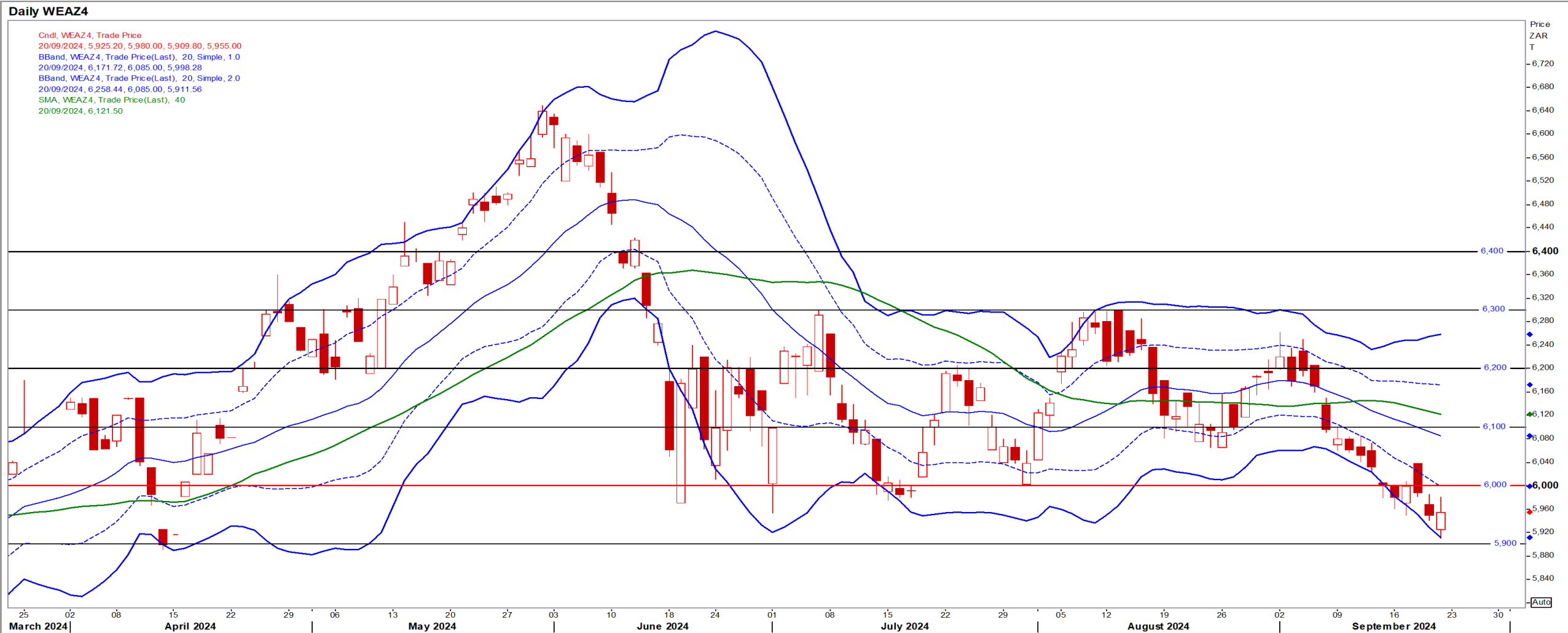
Dec24 Daily: Contract status very bearish < \$6.00

- Wheat gained ground with prices supported by dry weather curbing production prospects in Europe and other exporting countries – Reuters News.



SA Wheat

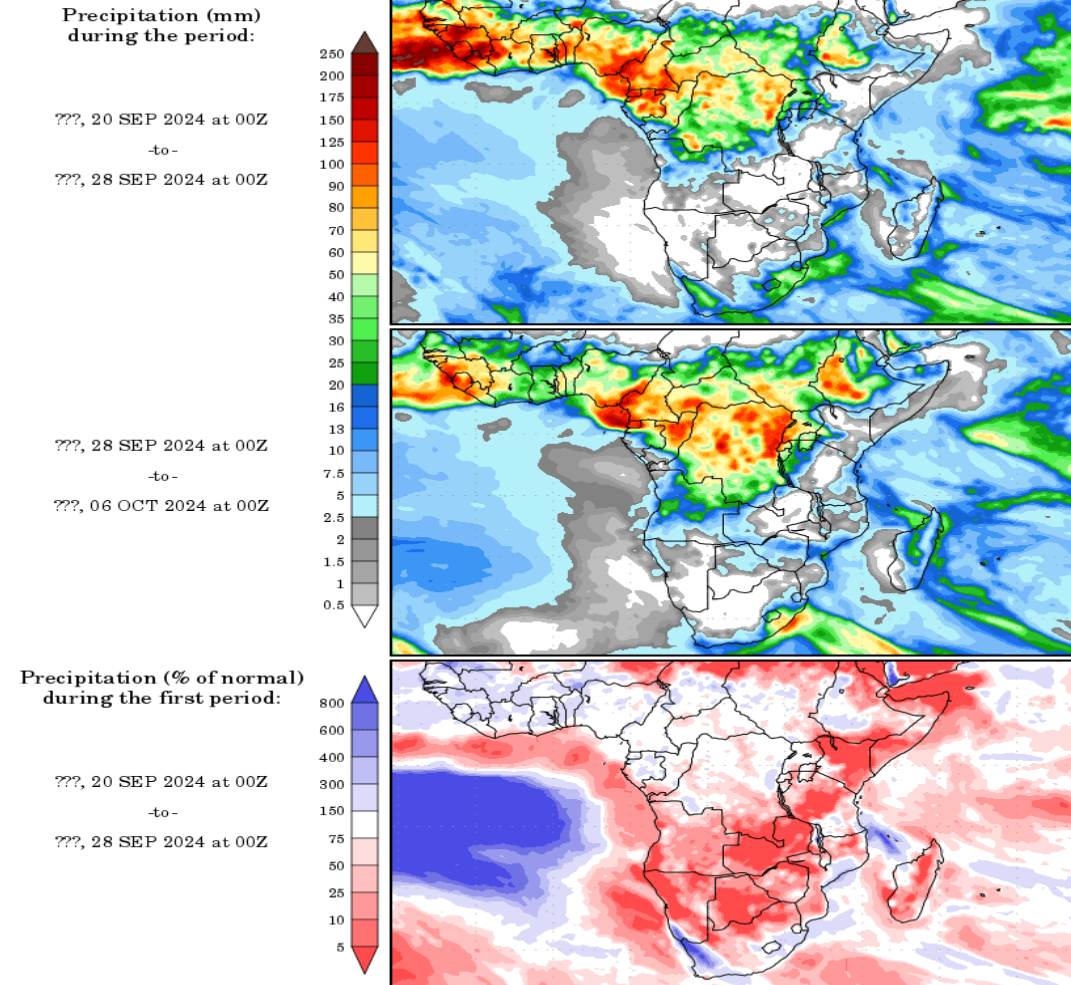
Dec24 Daily: Contract status very bearish < R6000



Weather

SA Medium-term Precipitation Forecasts

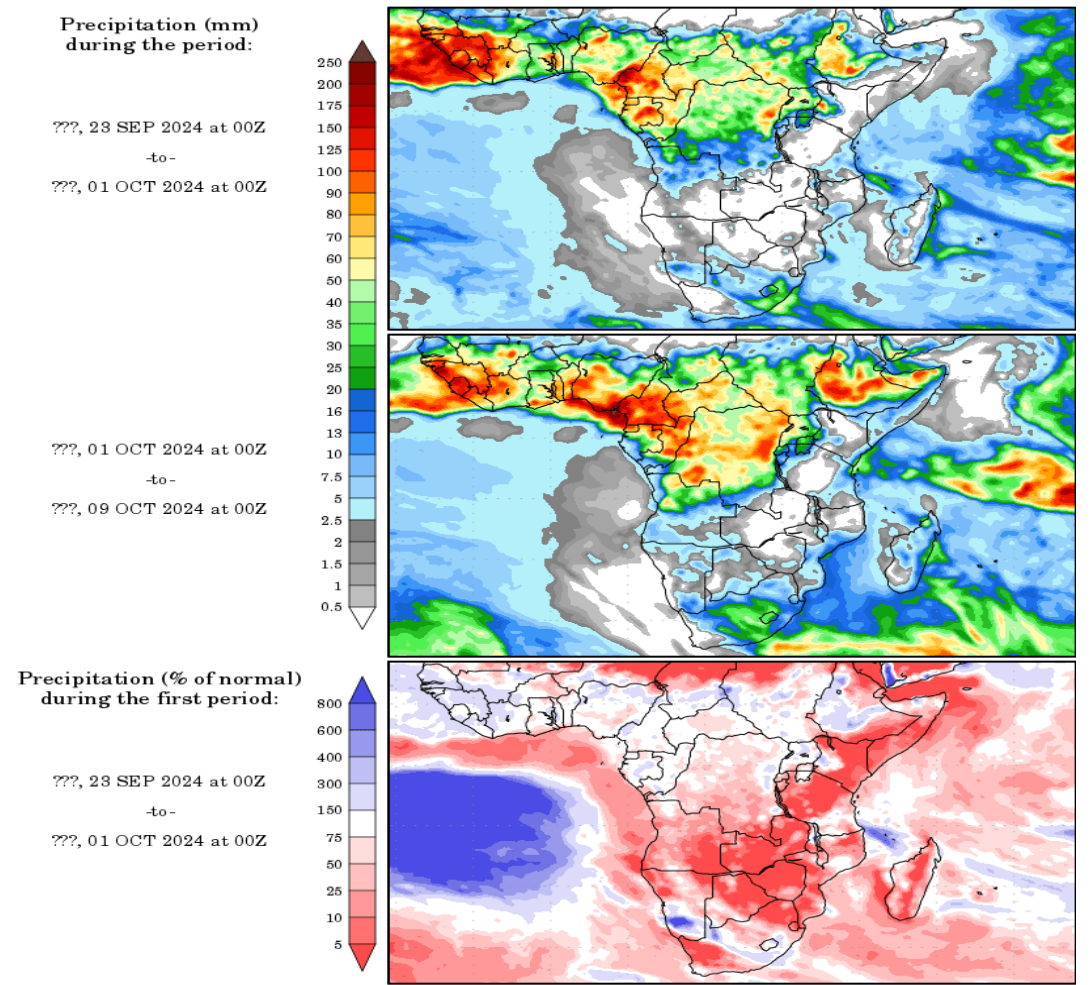
Precipitation Forecasts



Precipitation forecasts from the National Centers for Environmental Prediction.
Normal rainfall derived from Xie-Arkin (CMAP) Monthly Climatology for 1979-2003.
Forecast Initialization Time: 00Z20SEP2024

GrADS/COLA

Precipitation Forecasts



Precipitation forecasts from the National Centers for Environmental Prediction.
Normal rainfall derived from Xie-Arkin (CMAP) Monthly Climatology for 1979-2003.
Forecast Initialization Time: 00Z23SEP2024

GrADS/COLA