

Daily market
Report
25 Sep 24



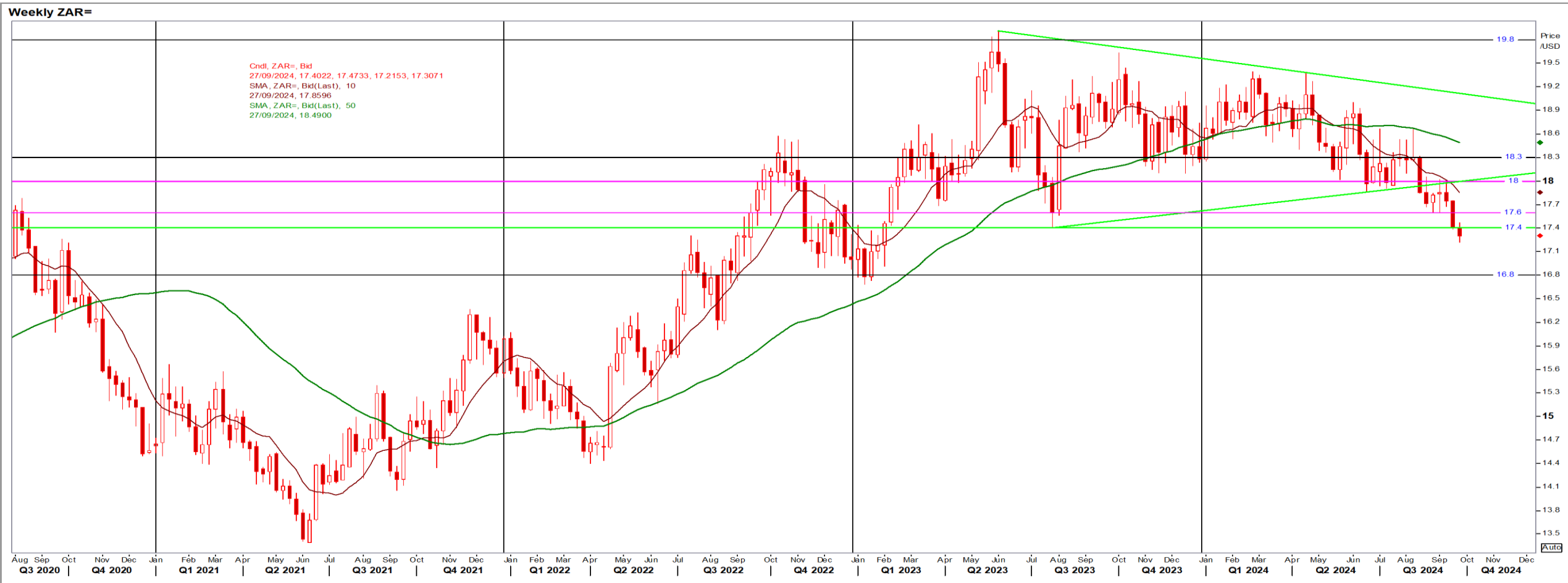
Parity Movements (implied price moves)

USA Movement (Overnight)	Cents	Currencies	25/Sep/24	07:48:58	
CORN CBOT (Dec24)	410.25	4.50	R/\$ last	17.3044	-0.0730
SOY CBOT (Nov24)	1,036.75	13.75	Euro=	1.1191	0.0083
W1 CBOT (Dec24)	575.75	0.00	GOLD	2,656	34.6250
W2 KCBT (Dec24)	567.25	-4.00	BRENT	75.01	0.37
BlackSea Wheat (Near)	215.00	0.00			
Index Change					
Maize (Dec24)	2,795	R 19.00	Wheat CBOT (Dec24)	3,661	-R15.44
Soya (Nov24)	6,591	R 59.98	Wheat Kansas (Dec24)	3,607	R -40.76
BlackSea Wheat Near	3,720	R -15.70	RAND EFFECT ON WHEAT PARITY	3,632	-R 15.32

South African Rand (ZAR)

USD/ZAR Weekly: Bullish < R17.60

- ZAR continues to rally following strong gains last week after a super-sized interest rate cut by the Federal Reserve and USD weakness – Reuters News.
- While stronger than R18.00 the medium-term ZAR remains bullish.



USA Corn

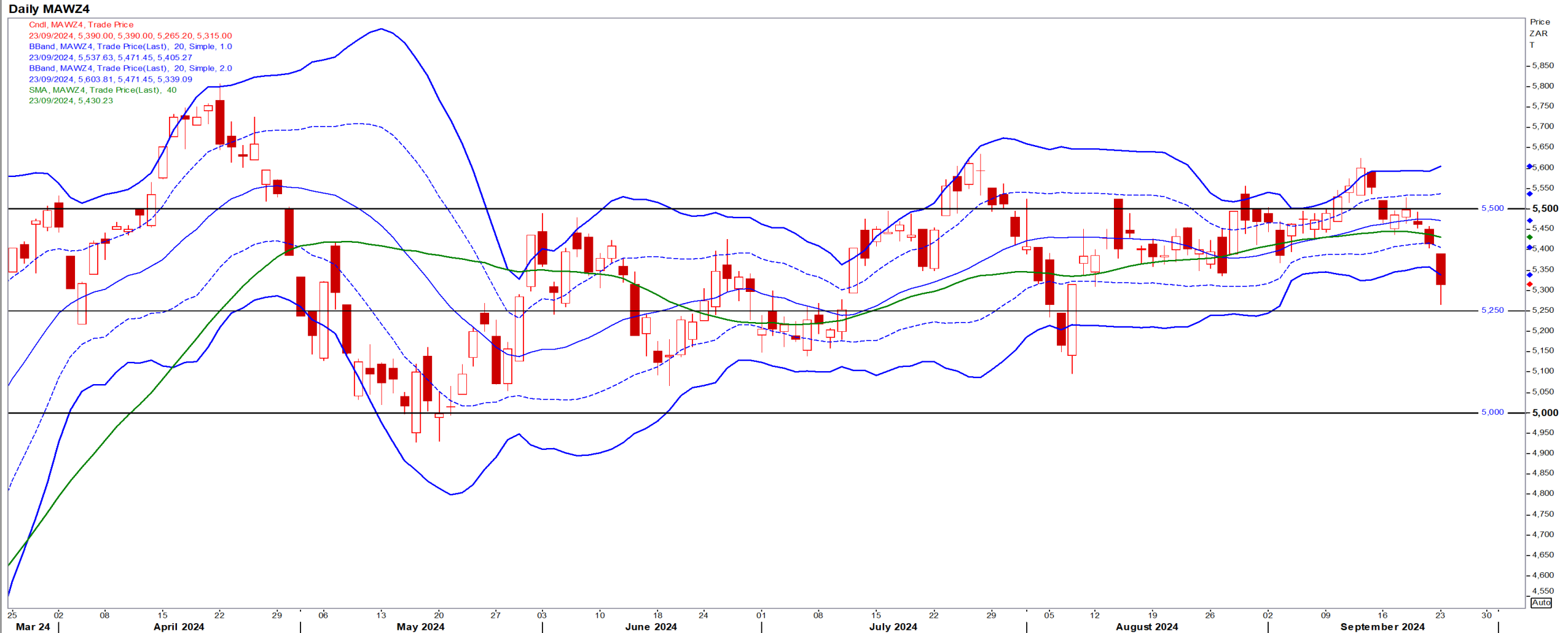
Dec24 Daily: Contract status very bearish < \$4.15

- Corn is retreating from a 2-month high as fund selling outweighed support from beans and news that China unveiled economic stimuli – Reuters News.



White Maize

Dec24 Daily: Contract status bullish > R5250



Yellow Maize

Dec24 Daily: Contract status bullish > R4200



USA Soya

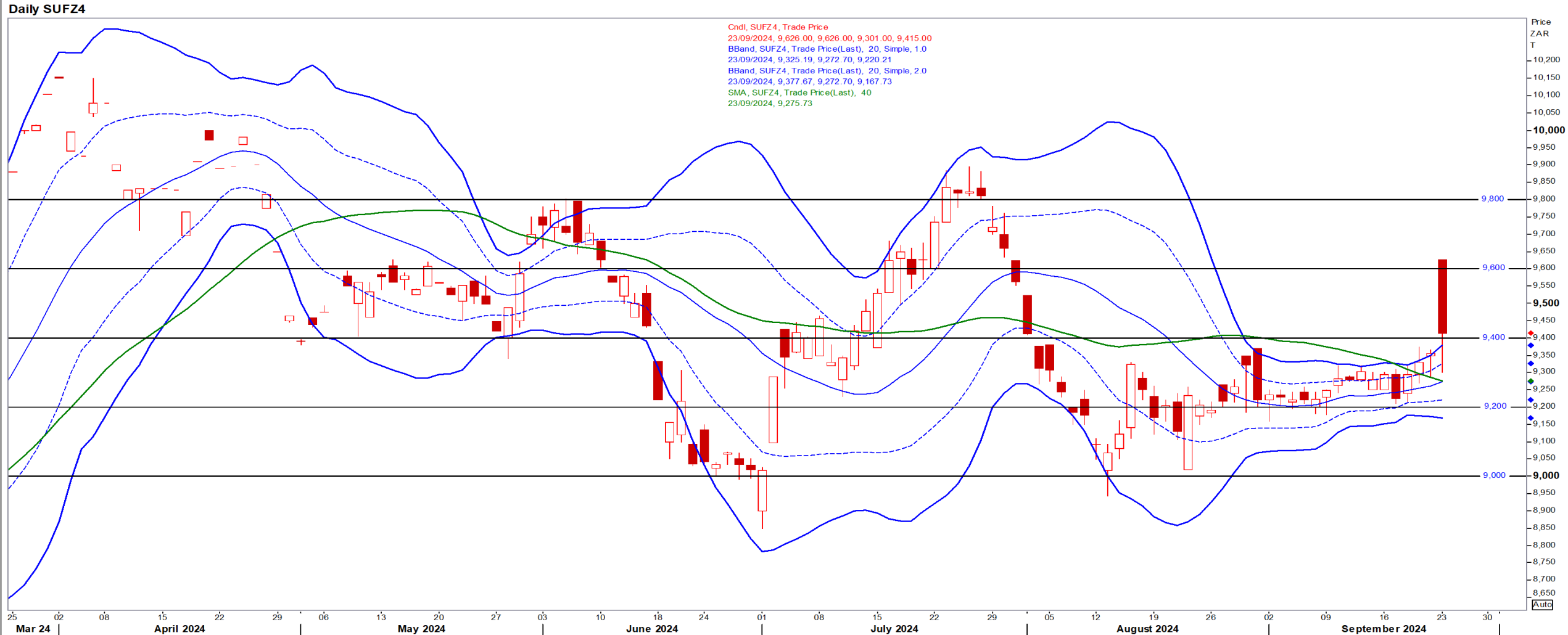
Nov24 Daily: Contract status very bearish < \$10.50

- Beans are sliding as an outlook for much-needed rains in Brazil eased worries about dry weather delaying planting – Reuters News.



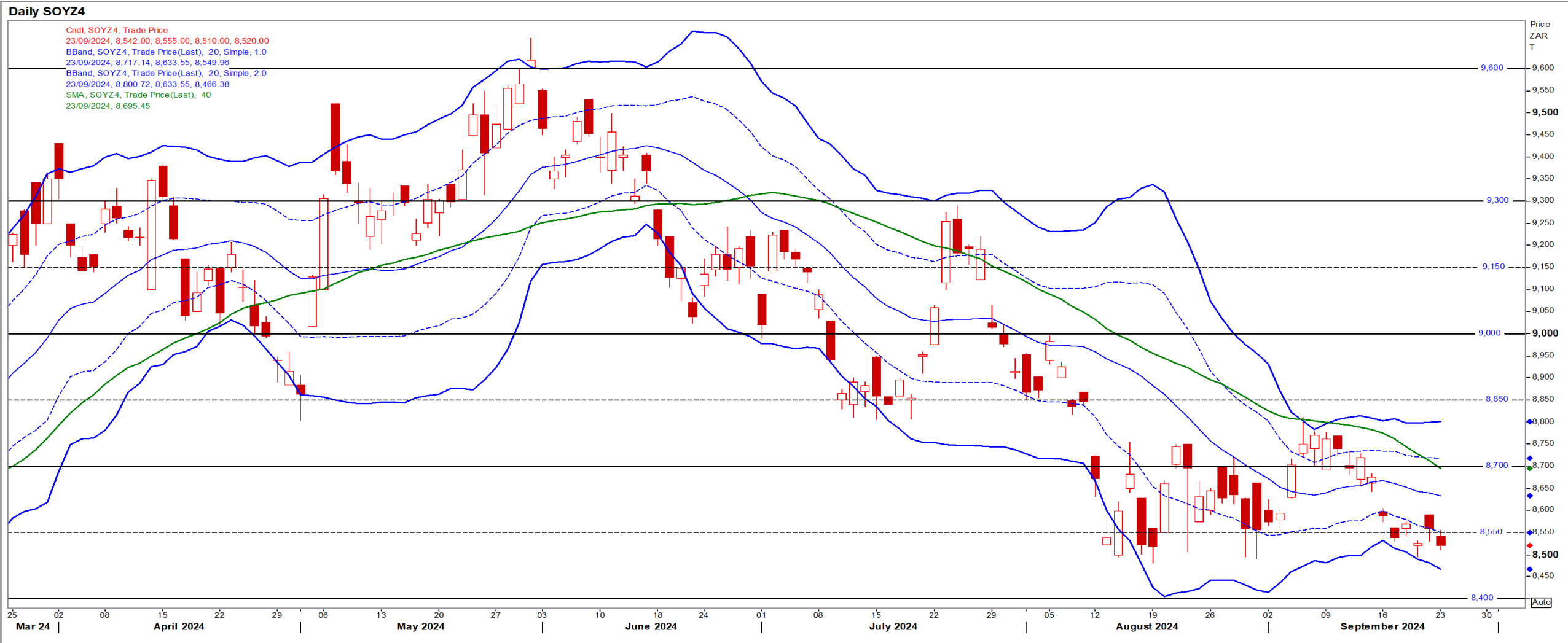
Suns

Dec24 Daily: Contract status bullish > R9400



SA Soya

Dec24 Daily: Contract status very bearish < R8700



US KANSAS Wheat

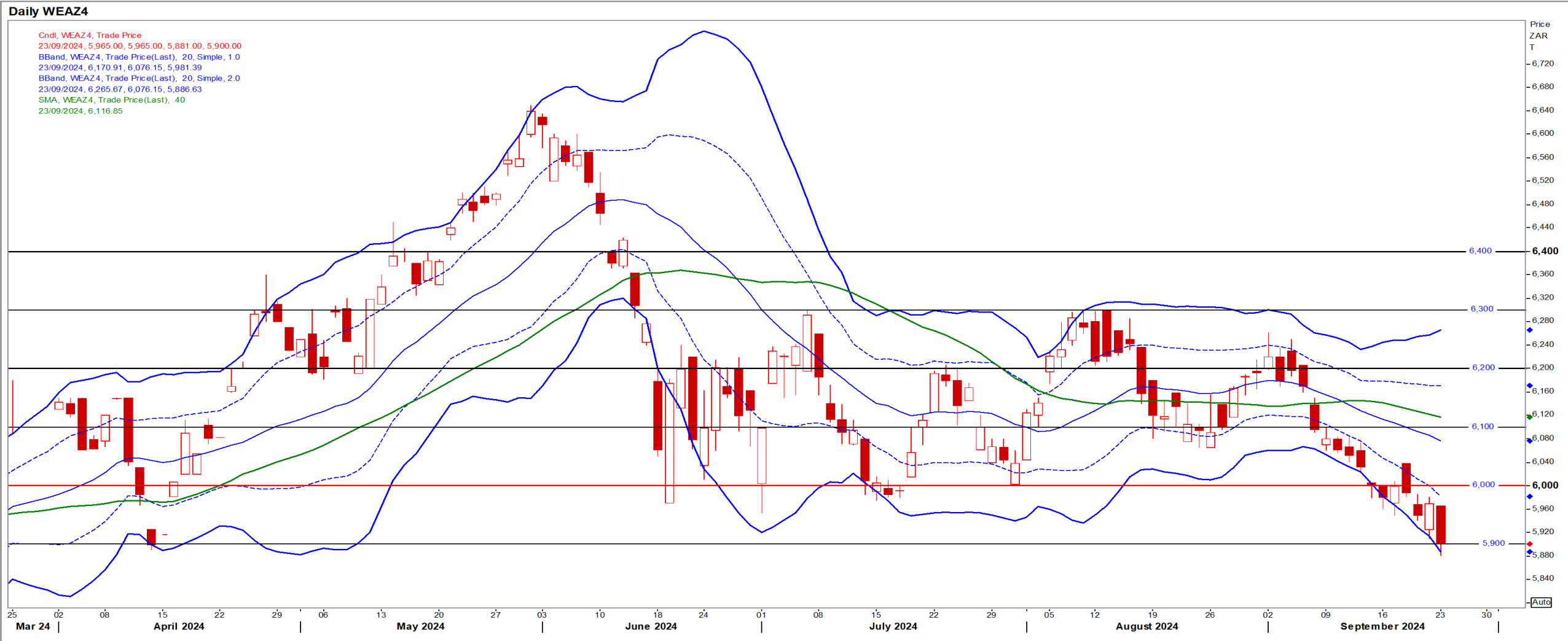
Dec24 Daily: Contract status very bearish < \$6.00

- Wheat ended lower as strong export competition from Russia outweighed early support from short-covering and strength from soybeans and corn – Reuters News.



SA Wheat

Dec24 Daily: Contract status very bearish < R6000



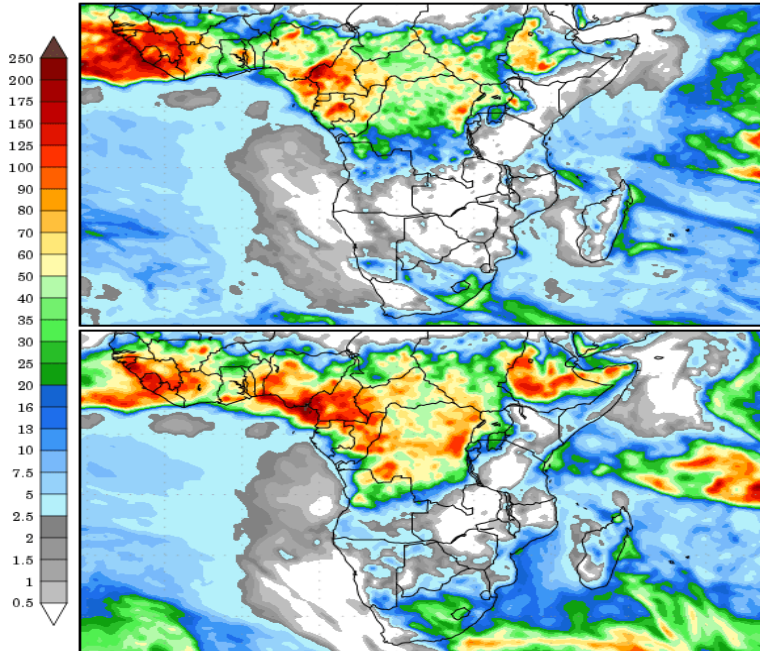
Weather

SA Medium-term Precipitation Forecasts

Precipitation Forecasts

Precipitation (mm)
during the period:

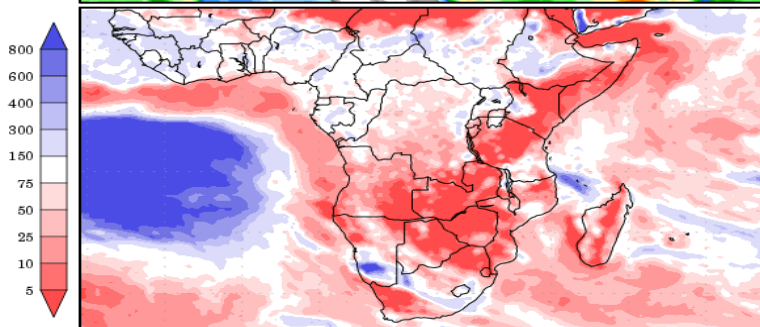
???, 23 SEP 2024 at 00Z
-to-
???, 01 OCT 2024 at 00Z



???, 01 OCT 2024 at 00Z
-to-
???, 09 OCT 2024 at 00Z

Precipitation (% of normal)
during the first period:

???, 23 SEP 2024 at 00Z
-to-
???, 01 OCT 2024 at 00Z



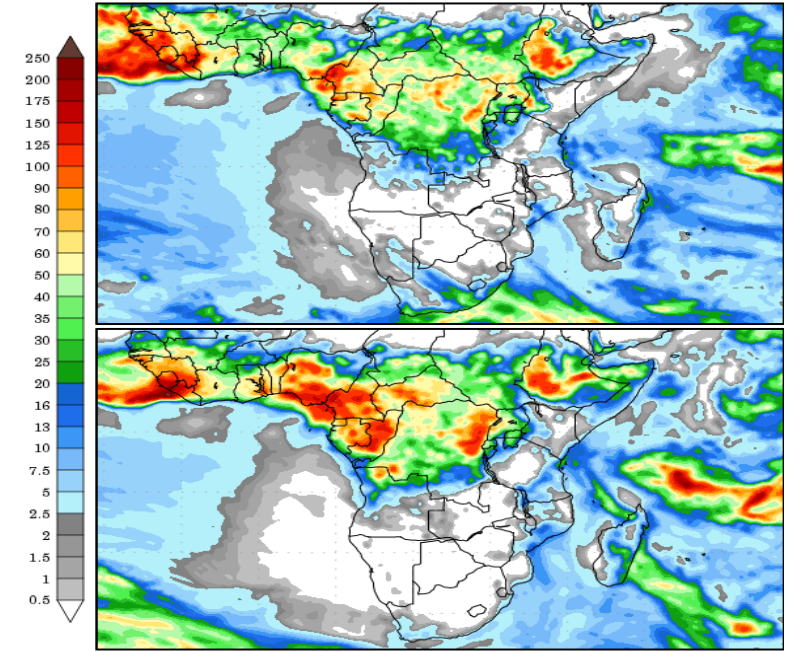
Precipitation forecasts from the National Centers for Environmental Prediction.
Normal rainfall derived from Xie-Arkin (CMAP) Monthly Climatology for 1979-2003.
Forecast Initialization Time: 00Z23SEP2024

GrADS/COLA

Precipitation Forecasts

Precipitation (mm)
during the period:

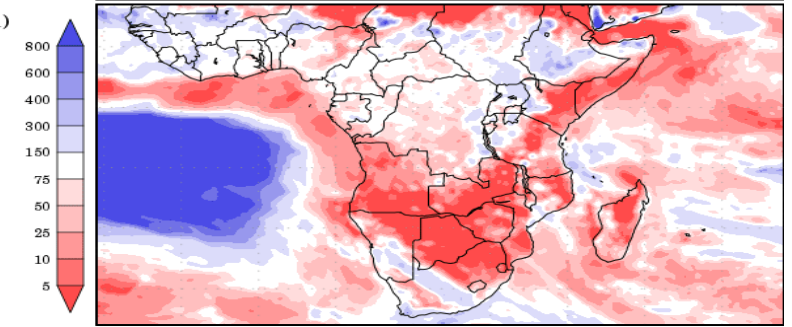
???, 24 SEP 2024 at 12Z
-to-
???, 02 OCT 2024 at 12Z



???, 02 OCT 2024 at 12Z
-to-
???, 10 OCT 2024 at 12Z

Precipitation (% of normal)
during the first period:

???, 24 SEP 2024 at 12Z
-to-
???, 02 OCT 2024 at 12Z



Precipitation forecasts from the National Centers for Environmental Prediction.
Normal rainfall derived from Xie-Arkin (CMAP) Monthly Climatology for 1979-2003.
Forecast Initialization Time: 12Z24SEP2024

GrADS/COLA

GrADS/COLA