

Daily market
Report
26 Sep 24



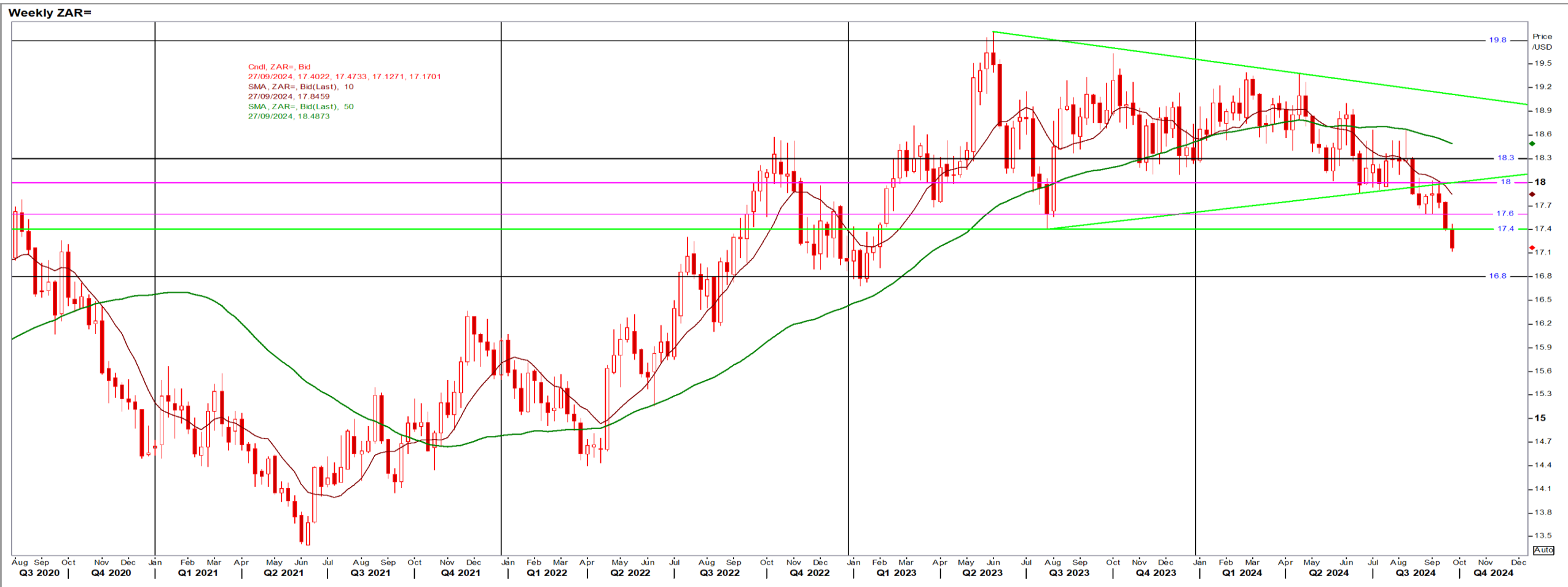
Parity Movements (implied price moves)

USA Movement (Overnight)	Cents	Currencies	26/Sep/24	07:58:05	
CORN CBOT (Dec24)	415.50	6.00	R/\$ last	17.1856	-0.0231
SOY CBOT (Nov24)	1,059.00	24.00	Euro=	1.1150	-0.0034
W1 CBOT (Dec24)	592.75	16.25	GOLD	2,661	4.5000
W2 KCBT (Dec24)	583.50	16.25	BRENT	72.1	-2.75
BlackSea Wheat (Near)	215.00	0.00			
Index Change					
Maize (Dec24)	2,811	R 36.87	Wheat CBOT (Dec24)	3,743	R97.72
Soya (Nov24)	6,687	R 142.75	Wheat Kansas (Dec24)	3,685	R 97.80
BlackSea Wheat Near	3,695	R -4.97	RAND EFFECT ON WHEAT PARITY	3,582	-R 4.81

South African Rand (ZAR)

USD/ZAR Weekly: Bullish < R17.60

- ZAR extended its rally on positive sentiment after US vs SA rate cuts (strongest since Feb23); likely to trade in R17.20/R17.40 range – Reuters News.
- While stronger than R18.00 the medium-term ZAR remains bullish.



USA Corn

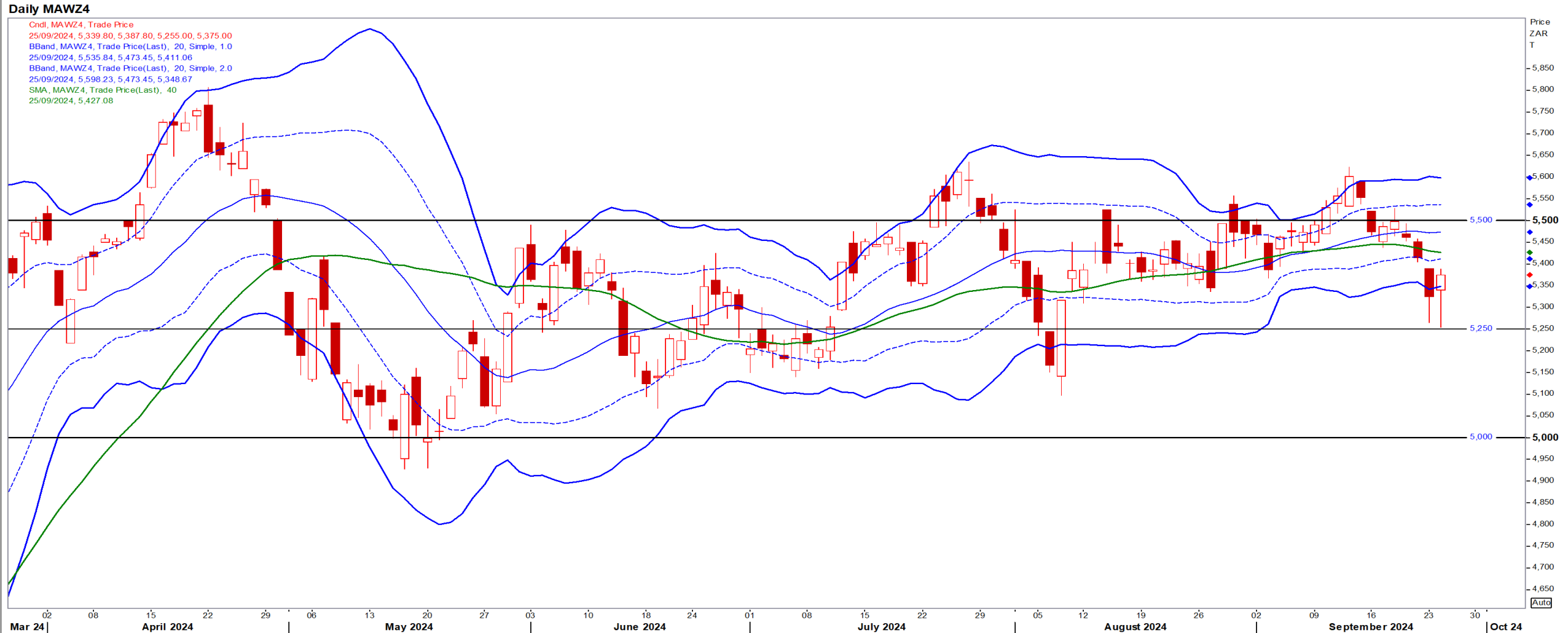
Dec24 Daily: Contract status very bearish < \$4.15

- Corn ended higher on rallies in beans and wheat as well as short-covering by speculators ahead of the end of the month and quarter – Reuters News.



White Maize

Dec24 Daily: Contract status bullish > R5250



Yellow Maize

Dec24 Daily: Contract status bullish > R4200



USA Soya

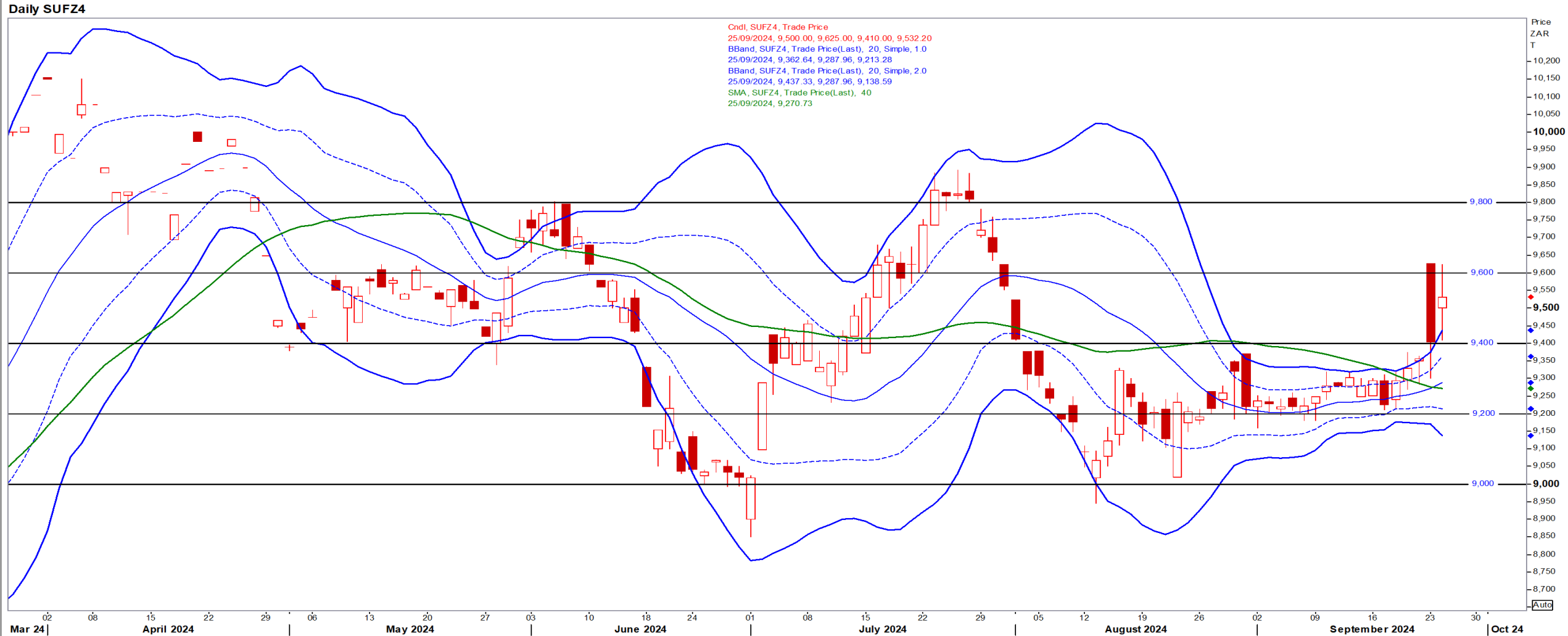
Nov24 Daily: Contract status very bearish < \$10.50

- Beans ended higher on worries about dry conditions in Brazil and position-squaring ahead of the end of the month and quarter – Reuters News.



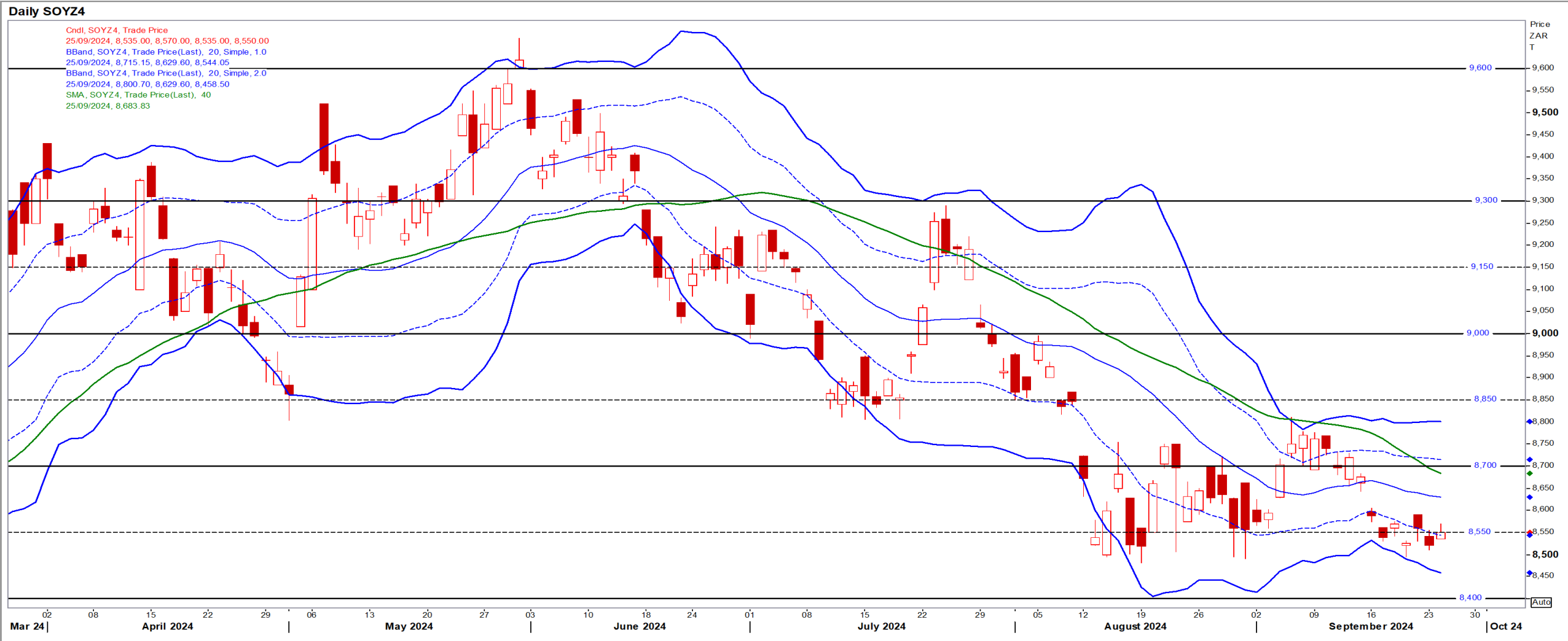
Suns

Dec24 Daily: Contract status bullish > R9400



SA Soya

Dec24 Daily: Contract status very bearish < R8700



US KANSAS Wheat

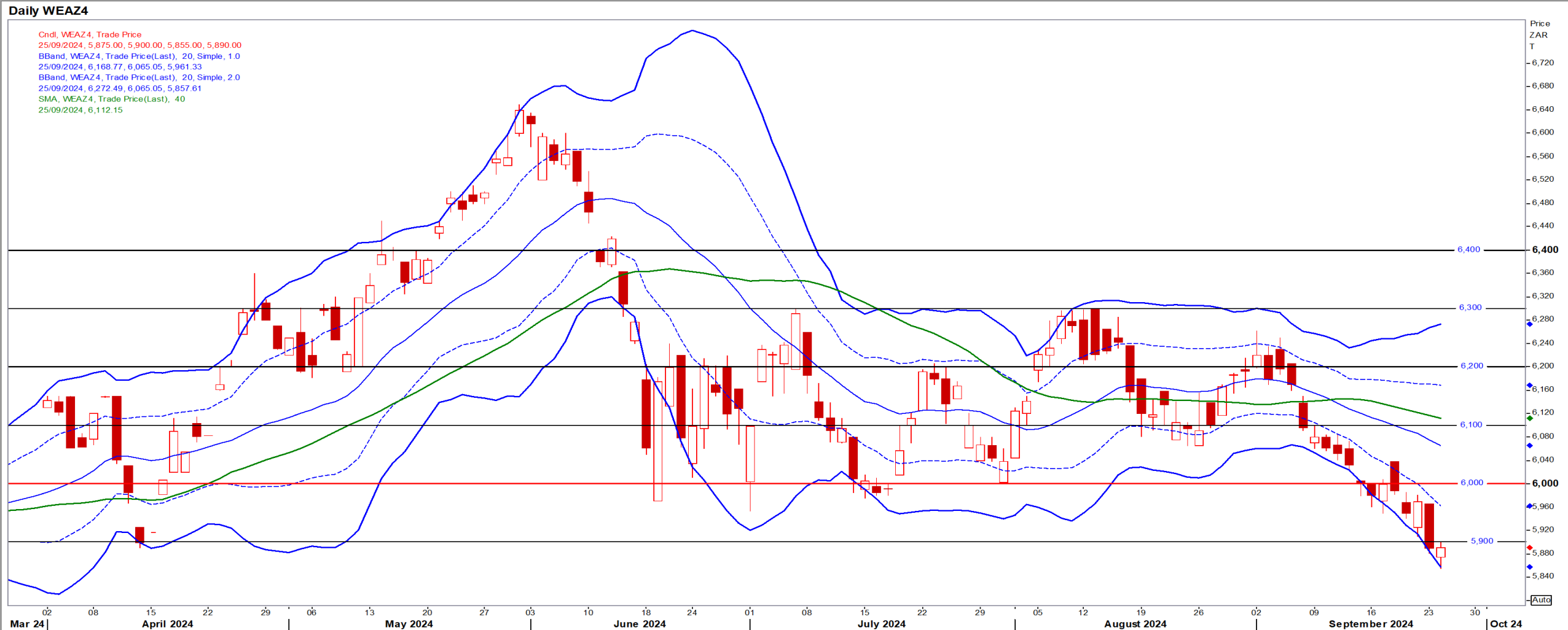
Dec24 Daily: Contract status very bearish < \$6.00

- Wheat climbed to their highest in 2 weeks on worries about dry weather slowing the pace of planting in top exporter Russia – Reuters News.



SA Wheat

Dec24 Daily: Contract status very bearish < R6000



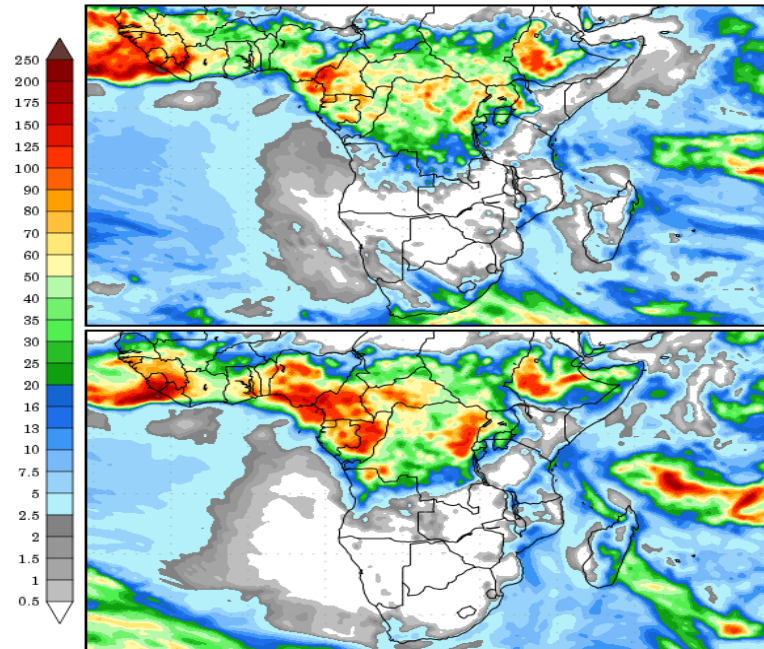
Weather

SA Medium-term Precipitation Forecasts

Precipitation Forecasts

Precipitation (mm)
during the period:

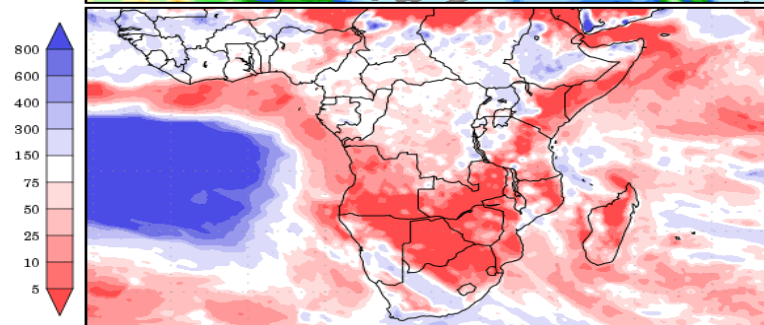
???, 24 SEP 2024 at 12Z
-to-
???, 02 OCT 2024 at 12Z



???, 02 OCT 2024 at 12Z
-to-
???, 10 OCT 2024 at 12Z

Precipitation (% of normal)
during the first period:

???, 24 SEP 2024 at 12Z
-to-
???, 02 OCT 2024 at 12Z



Precipitation forecasts from the National Centers for Environmental Prediction.
Normal rainfall derived from Xie-Arkin (CMAP) Monthly Climatology for 1979-2003.
Forecast Initialization Time: 12Z24SEP2024

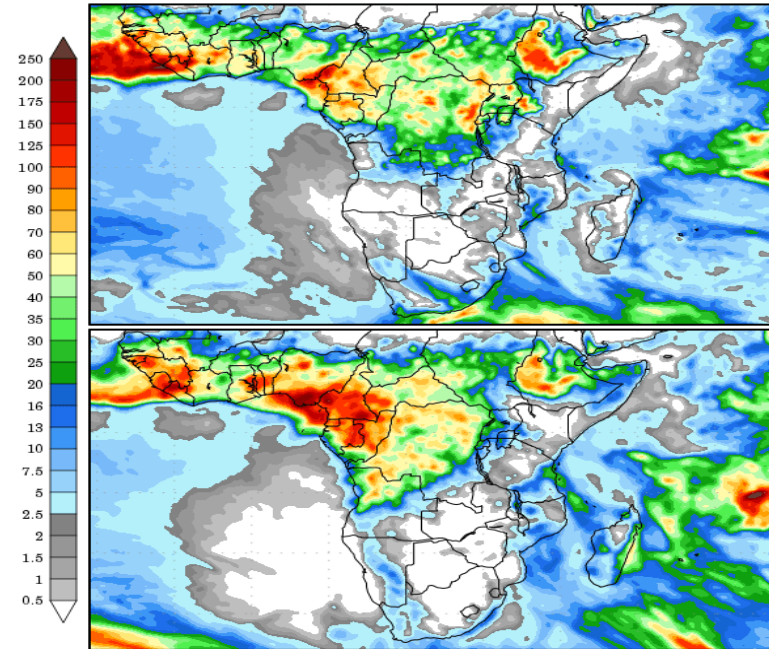
GrADS/COLA

GrADS/COLA

Precipitation Forecasts

Precipitation (mm)
during the period:

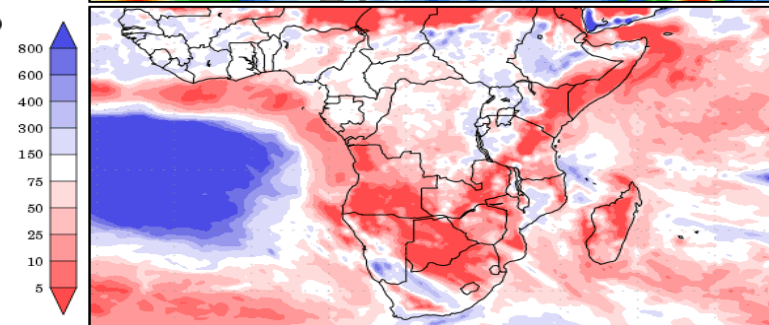
???, 25 SEP 2024 at 00Z
-to-
???, 03 OCT 2024 at 00Z



???, 03 OCT 2024 at 00Z
-to-
???, 11 OCT 2024 at 00Z

Precipitation (% of normal)
during the first period:

???, 25 SEP 2024 at 00Z
-to-
???, 03 OCT 2024 at 00Z



Precipitation forecasts from the National Centers for Environmental Prediction.
Normal rainfall derived from Xie-Arkin (CMAP) Monthly Climatology for 1979-2003.
Forecast Initialization Time: 00Z25SEP2024

