

Daily market
Report
27 Sep 24



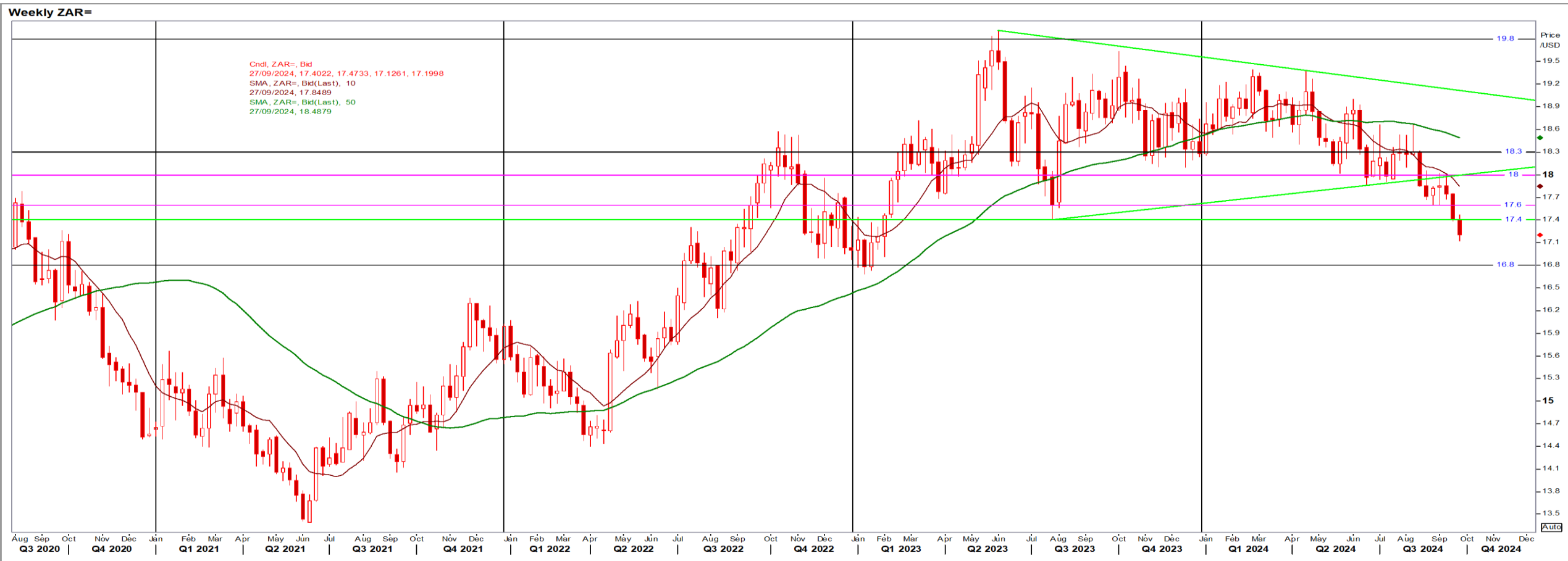
Parity Movements (implied price moves)

USA Movement (Overnight)		Cents	Currencies	27/Sep/24	08:06:00
CORN CBOT (Dec24)	411.50	-3.25	R/\$ last	17.2119	-0.0356
SOY CBOT (Nov24)	1,044.25	-12.50	Euro=	1.1163	0.0020
W1 CBOT (Dec24)	579.75	-12.25	GOLD	2,666	-3.0500
W2 KCBT (Dec24)	574.75	-9.50	BRENT	71.38	-1.03
BlackSea Wheat (Near)	216.00	1.00			
Index Change					
Maize (Dec24)	2,788	R -27.83	Wheat CBOT (Dec24)	3,667	-R85.22
Soya (Nov24)	6,603	R -92.87	Wheat Kansas (Dec24)	3,635	R -67.72
BlackSea Wheat Near	3,718	R 9.56	RAND EFFECT ON WHEAT PARITY	3,695	-R 7.64

South African Rand (ZAR)

USD/ZAR Weekly: Bullish < R17.60

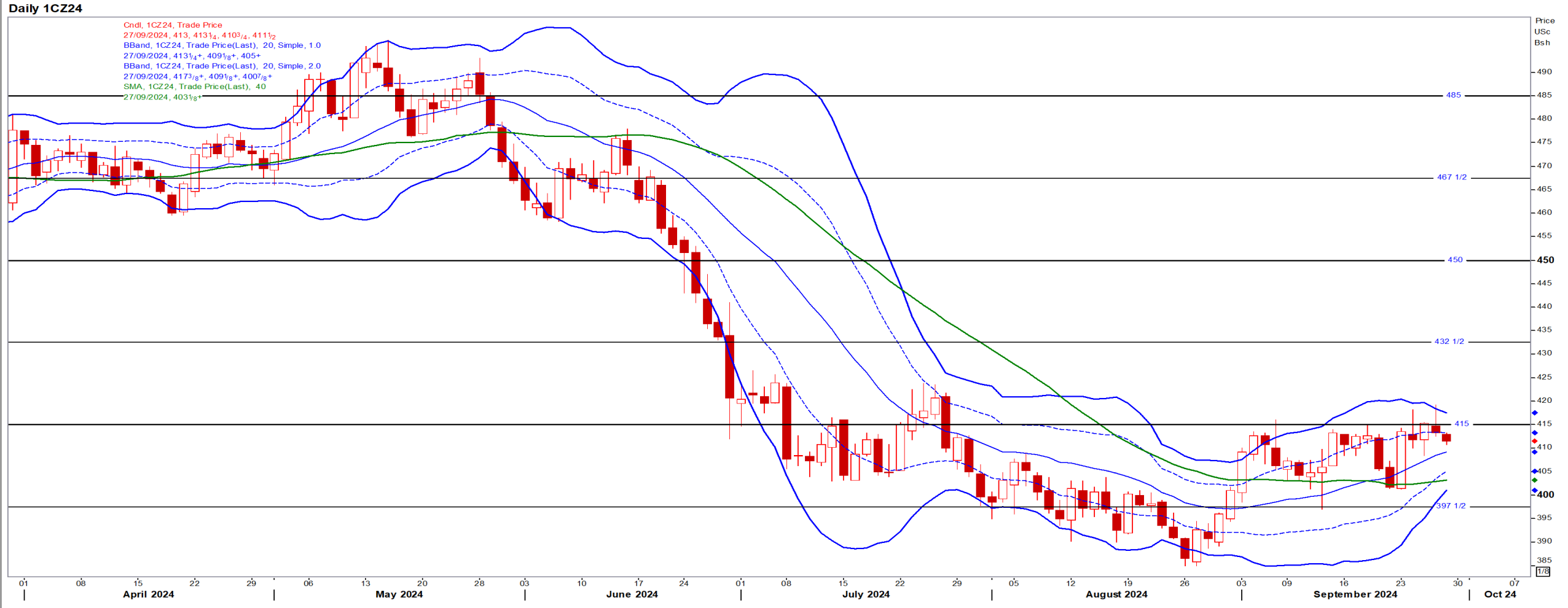
- Monetary easing in the developed world supports risk appetite and drives capital to high-yielding jurisdictions, with SA's post-election risk profile making it a prime candidate for foreign capital flows – Reuters News.
- While stronger than R18.00 the medium-term ZAR remains bullish.



USA Corn

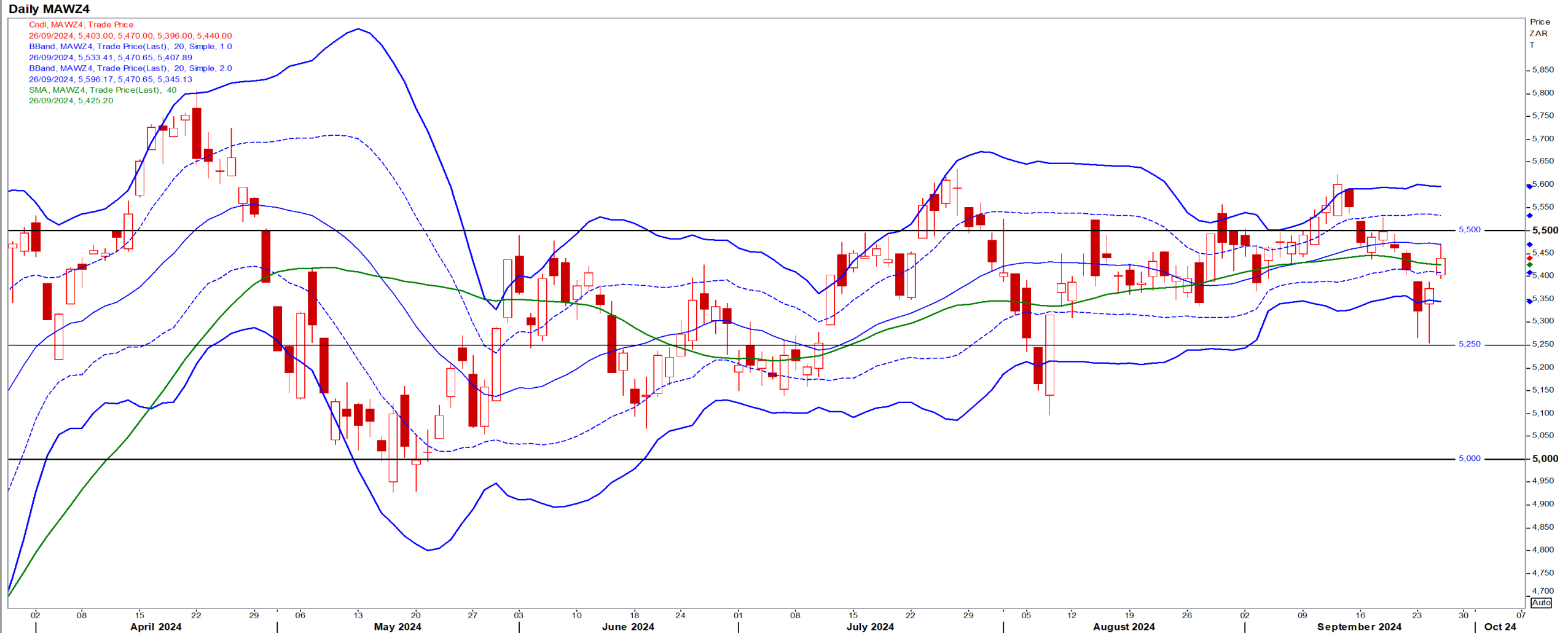
Dec24 Daily: Contract status very bearish < \$4.15

- Corn ended lower as lower-than-expected export numbers pressured prices despite news of sales of US corn to Mexico – Reuters News.



White Maize

Dec24 Daily: Contract status bullish > R5250



Yellow Maize

Dec24 Daily: Contract status bullish > R4200



USA Soya

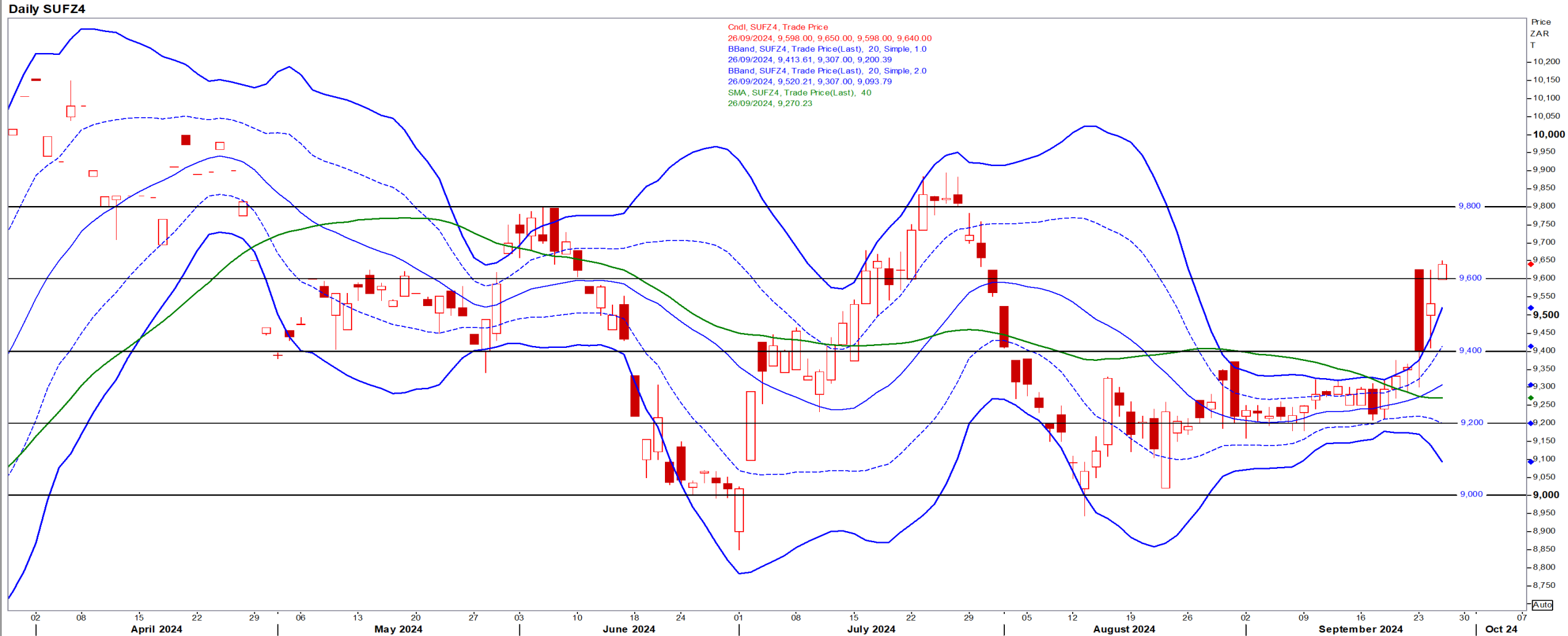
Nov24 Daily: Contract status very bearish < \$10.50

- Beans ended lower on a volatile day amid questions over export demand and US crop yields – Reuters News.



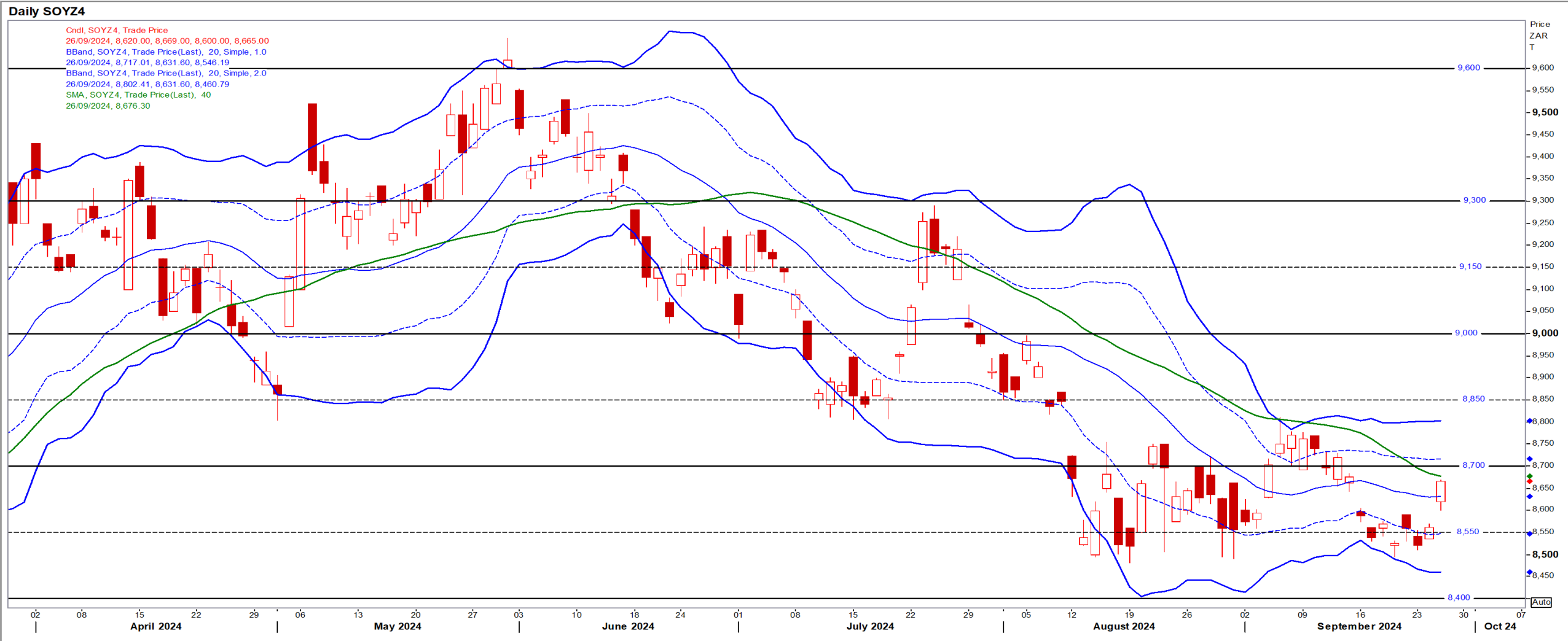
Suns

Dec24 Daily: Contract status bullish > R9400



SA Soya

Dec24 Daily: Contract status very bearish < R8700



US KANSAS Wheat

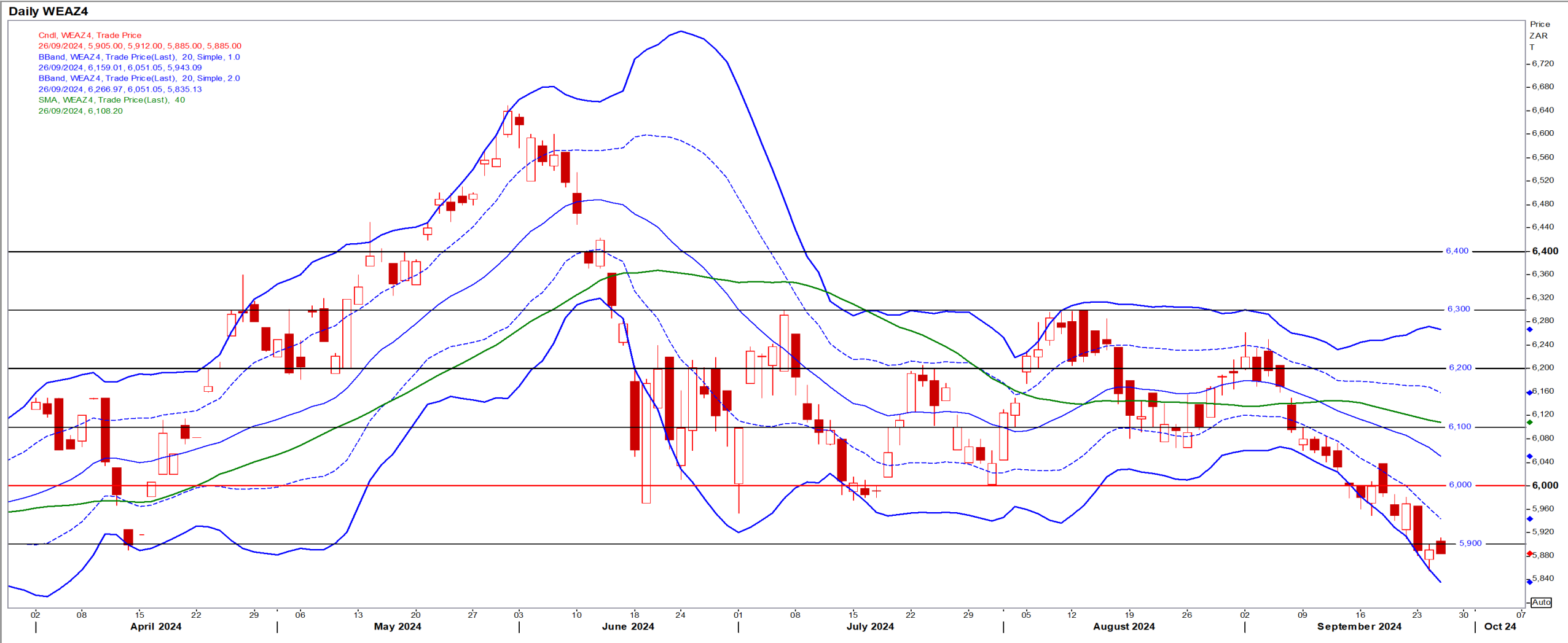
Dec24 Daily: Contract status very bearish < \$6.00

- Wheat slid as dismal demand for US cargoes weighed on prices after a weekly gain with dry weather slowing planting in top exporter Russia – Reuters News.



SA Wheat

Dec24 Daily: Contract status very bearish < R6000



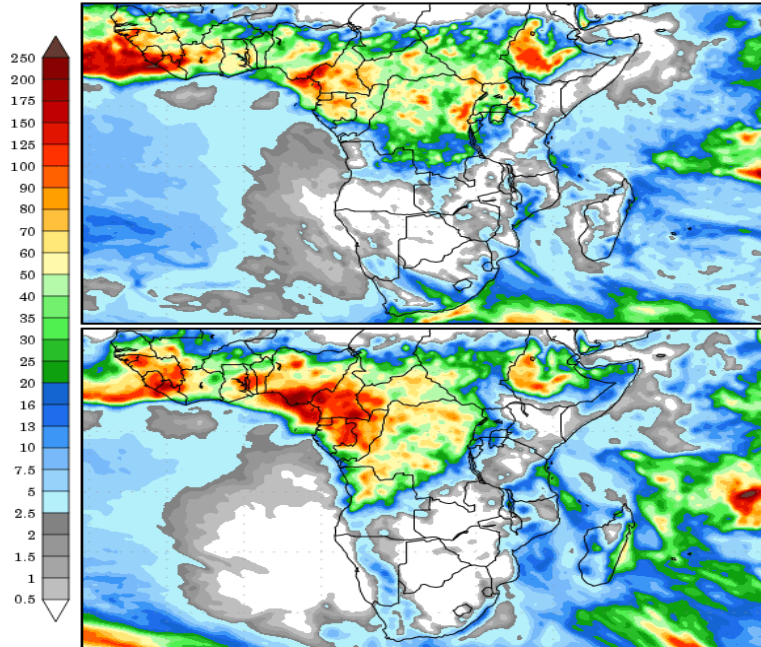
Weather

SA Medium-term Precipitation Forecasts

Precipitation Forecasts

Precipitation (mm)
during the period:

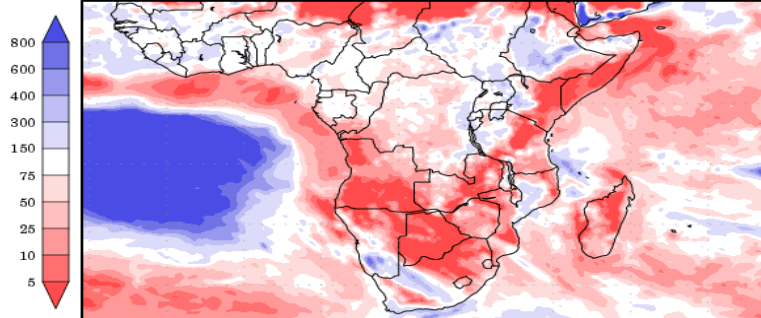
???, 25 SEP 2024 at 00Z
-to-
???, 03 OCT 2024 at 00Z



???, 03 OCT 2024 at 00Z
-to-
???, 11 OCT 2024 at 00Z

Precipitation (% of normal)
during the first period:

???, 25 SEP 2024 at 00Z
-to-
???, 03 OCT 2024 at 00Z



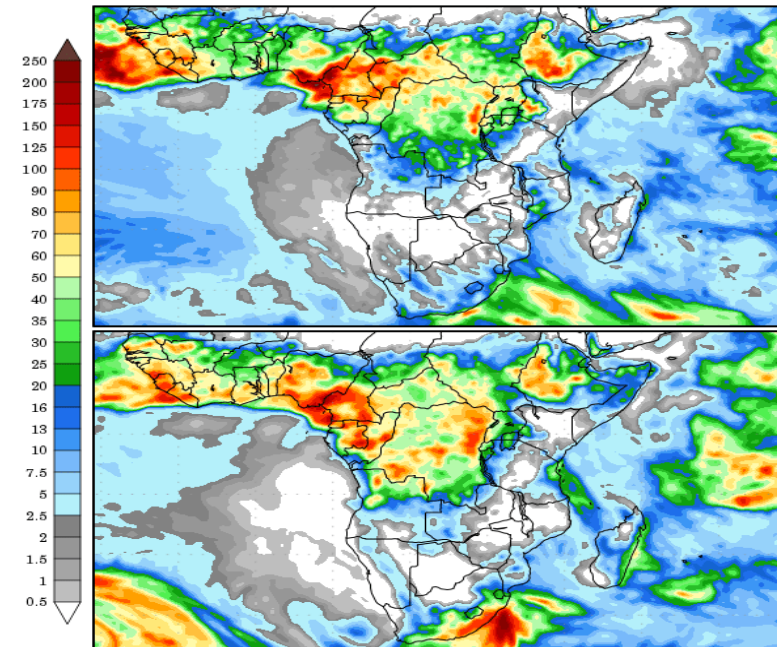
Precipitation forecasts from the National Centers for Environmental Prediction.
Normal rainfall derived from Xie-Arkin (CMAP) Monthly Climatology for 1979-2003.
Forecast Initialization Time: 00Z25SEP2024

GrADS/COLA

Precipitation Forecasts

Precipitation (mm)
during the period:

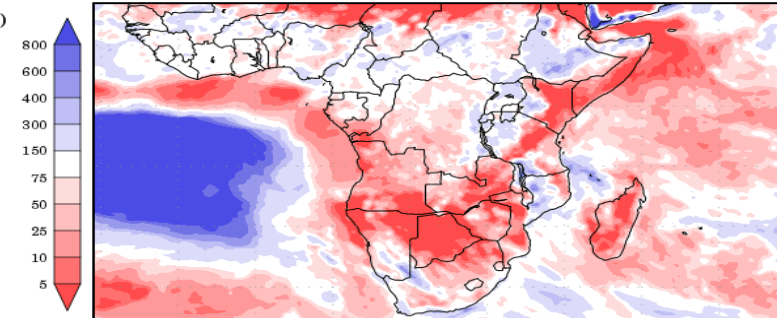
???, 26 SEP 2024 at 00Z
-to-
???, 04 OCT 2024 at 00Z



???, 04 OCT 2024 at 00Z
-to-
???, 12 OCT 2024 at 00Z

Precipitation (% of normal)
during the first period:

???, 26 SEP 2024 at 00Z
-to-
???, 04 OCT 2024 at 00Z



Precipitation forecasts from the National Centers for Environmental Prediction.
Normal rainfall derived from Xie-Arkin (CMAP) Monthly Climatology for 1979-2003.
Forecast Initialization Time: 00Z26SEP2024

GrADS/COLA