

Daily market
Report
23 Dec 24

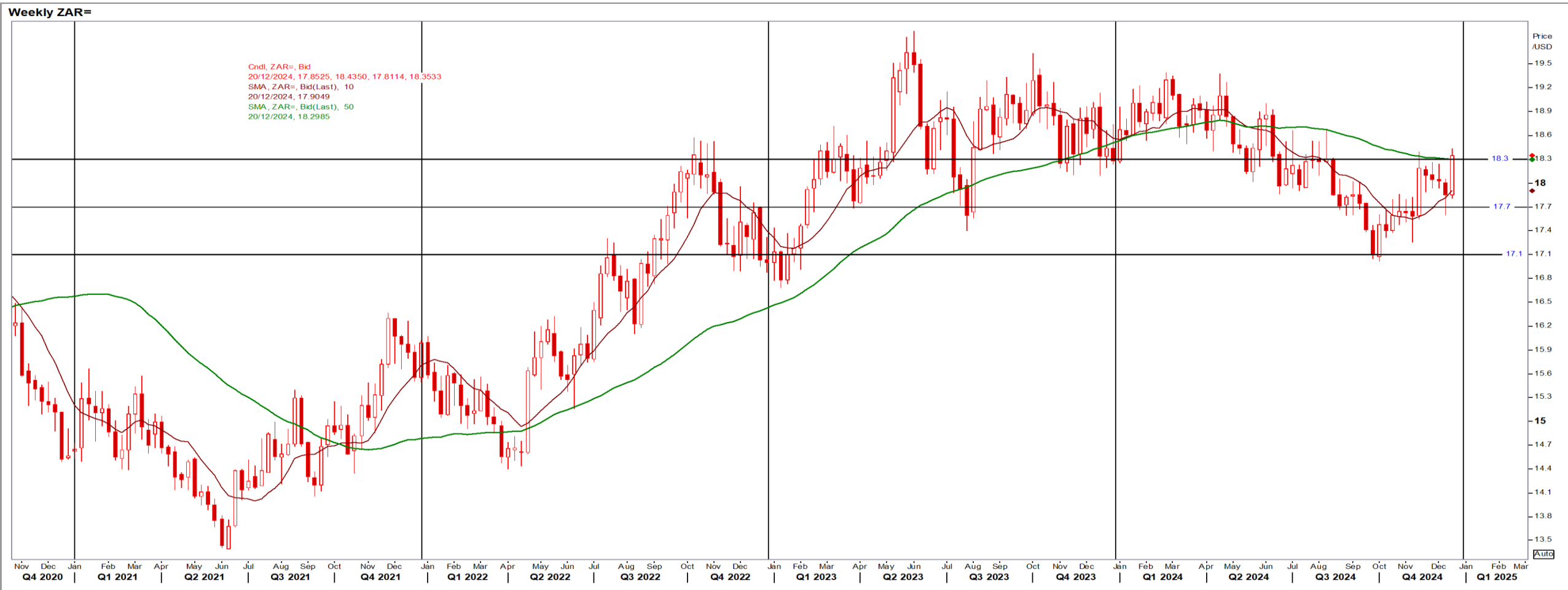


Parity Movements (implied price moves)

South African Rand (ZAR)

USD/ZAR Weekly: Bearish > R18.30

- ZAR recovered some losses on improved risk sentiment after a volatile week in which the Fed struck a hawkish tone on its rates outlook – Reuters News.
- While weaker than R18.30 the medium-term ZAR is bearish.



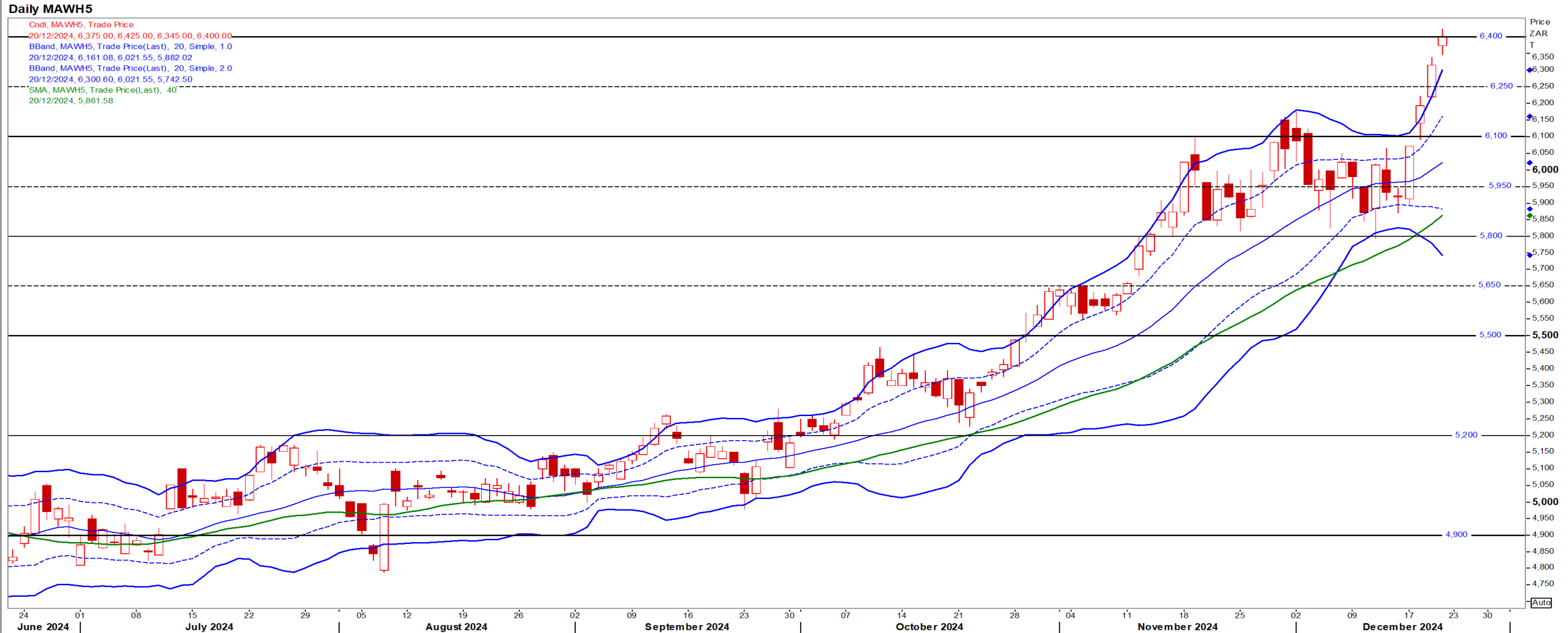
USA Corn

Mar25 Daily: Contract status bullish > \$4.35

- Corn finished higher after spending the day seesawing between wheat weakness, soybean strength and a stronger USD – Reuters News.

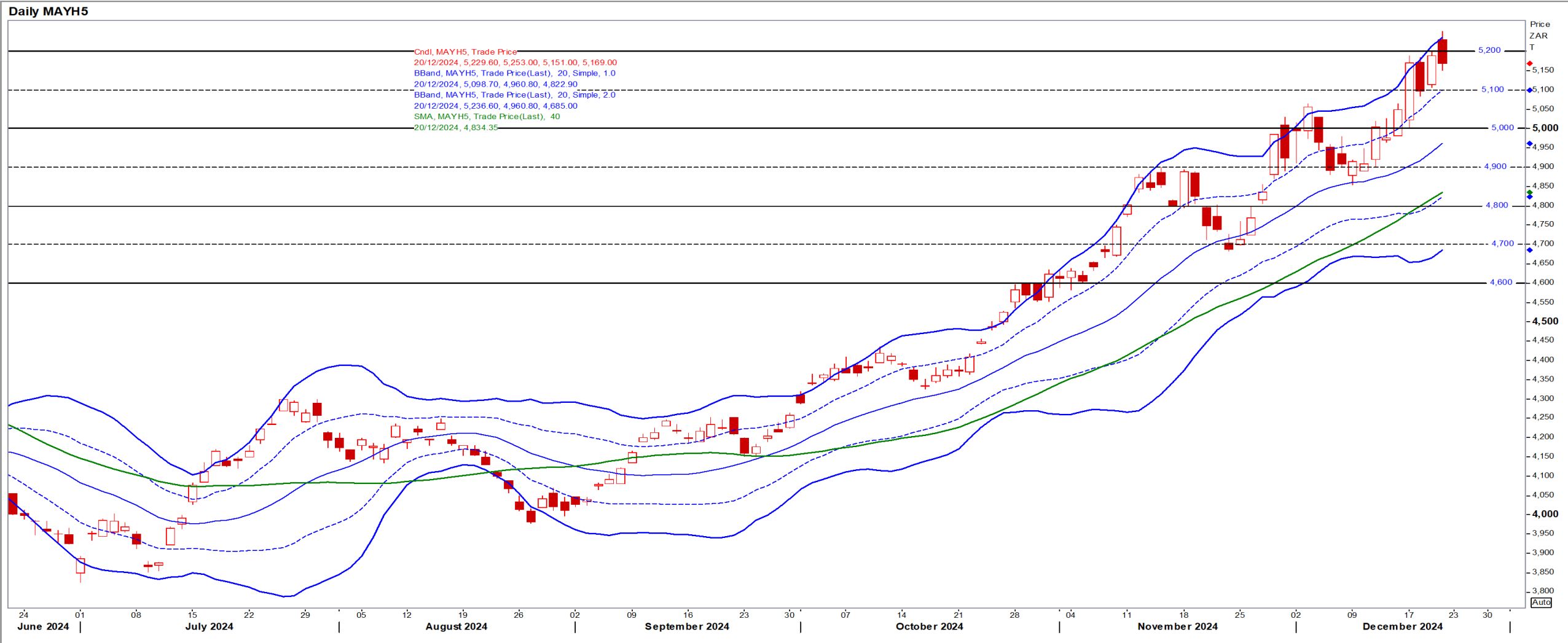
White Maize

Mar25 Daily: Contract status very bullish > R5800



Yellow Maize

Mar25 Daily: Contract status very bullish > R4800



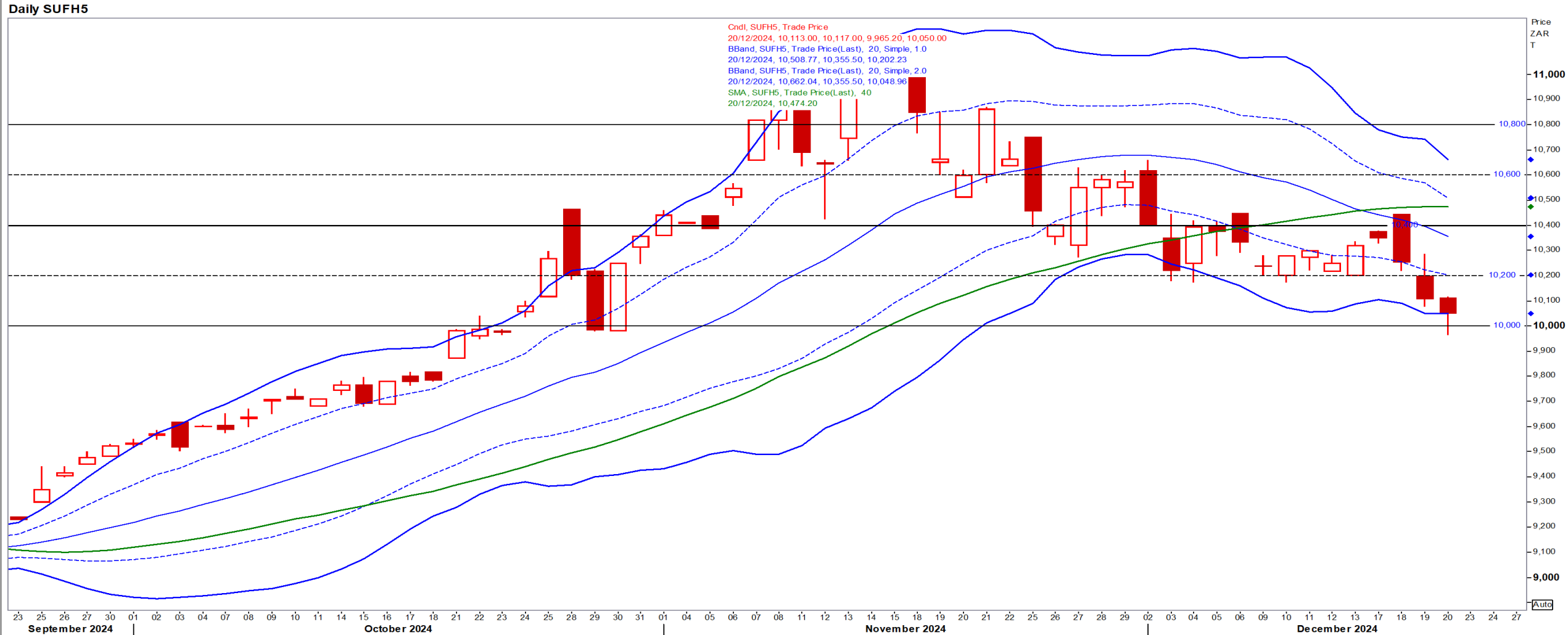
USA Soya

Mar25 Daily: Contract status bearish < \$10.00

- Beans rebounded off a four-year low on technical buying – Reuters News.

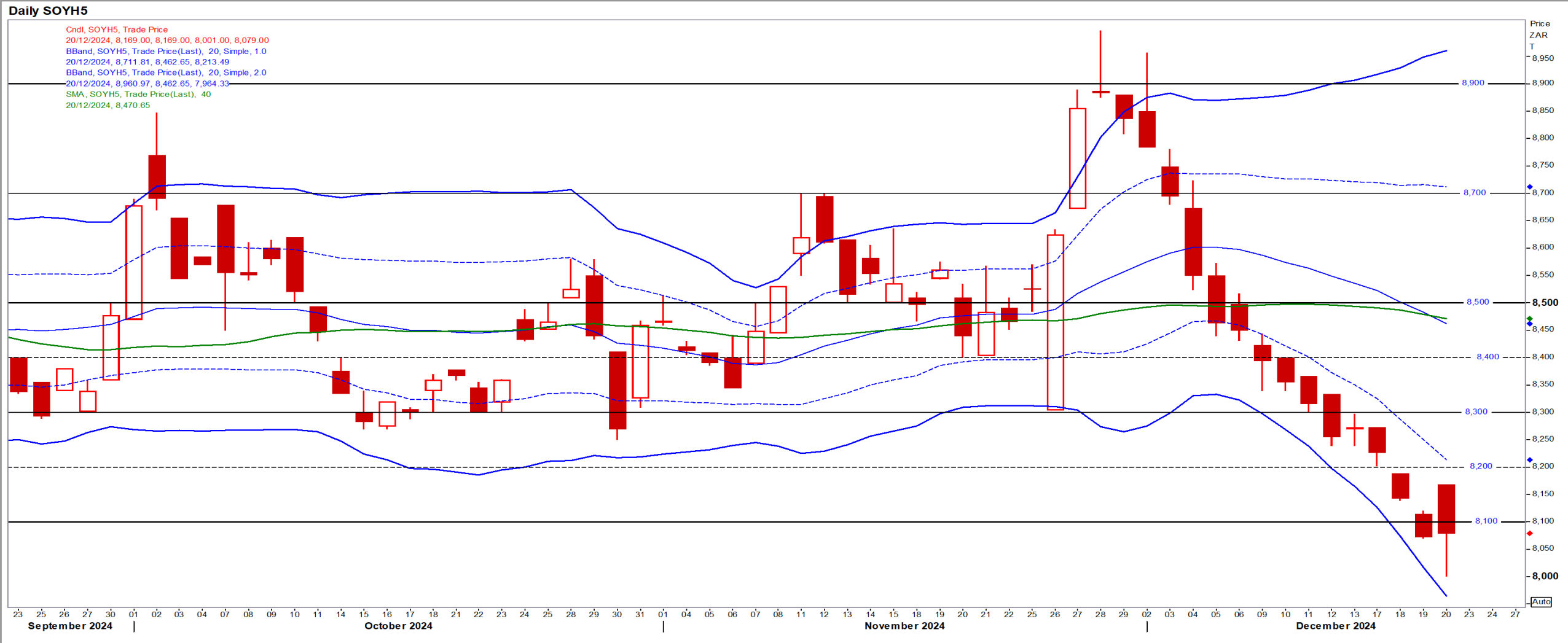
Suns

Mar25 Daily: Contract status bearish < R10400



SA Soya

Mar25 Daily: Contract status very bearish < R8500



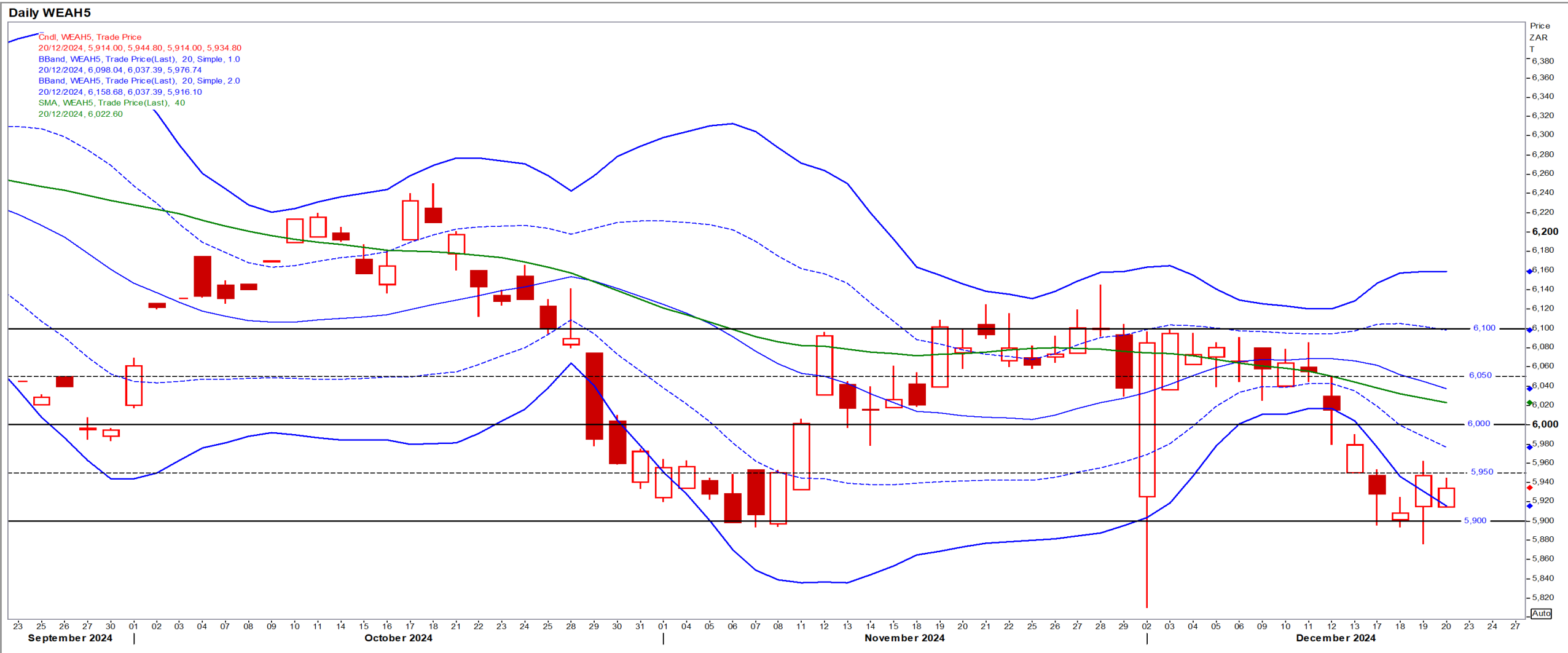
US KANSAS Wheat

Mar25 Daily: Contract bearish < \$5.65

- Wheat edged higher but were set for a weekly drop on a strong USD and ample supply despite forecasts of a tighter market next year – Reuters News.

SA Wheat

Mar25 Daily: Contract status very bearish < R6000



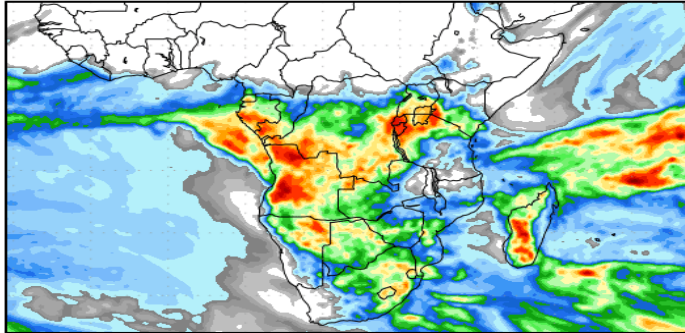
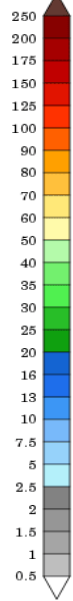
Weather

SA Medium-term Precipitation Forecasts

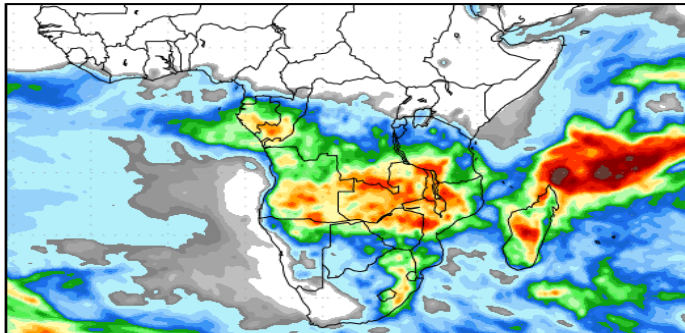
Precipitation Forecasts

Precipitation (mm)
during the period:

???, 20 DEC 2024 at 00Z
-to-
???, 28 DEC 2024 at 00Z

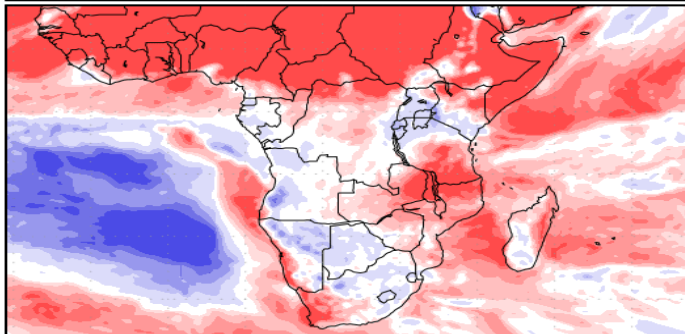
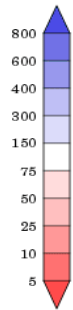


???, 28 DEC 2024 at 00Z
-to-
???, 05 JAN 2025 at 00Z



Precipitation (% of normal)
during the first period:

???, 20 DEC 2024 at 00Z
-to-
???, 28 DEC 2024 at 00Z



Precipitation forecasts from the National Centers for Environmental Prediction.
Normal rainfall derived from Xie-Arkin (CMAP) Monthly Climatology for 1979-2003.
Forecast Initialization Time: 00Z20DEC2024