

Daily market  
Report  
24 Dec 24



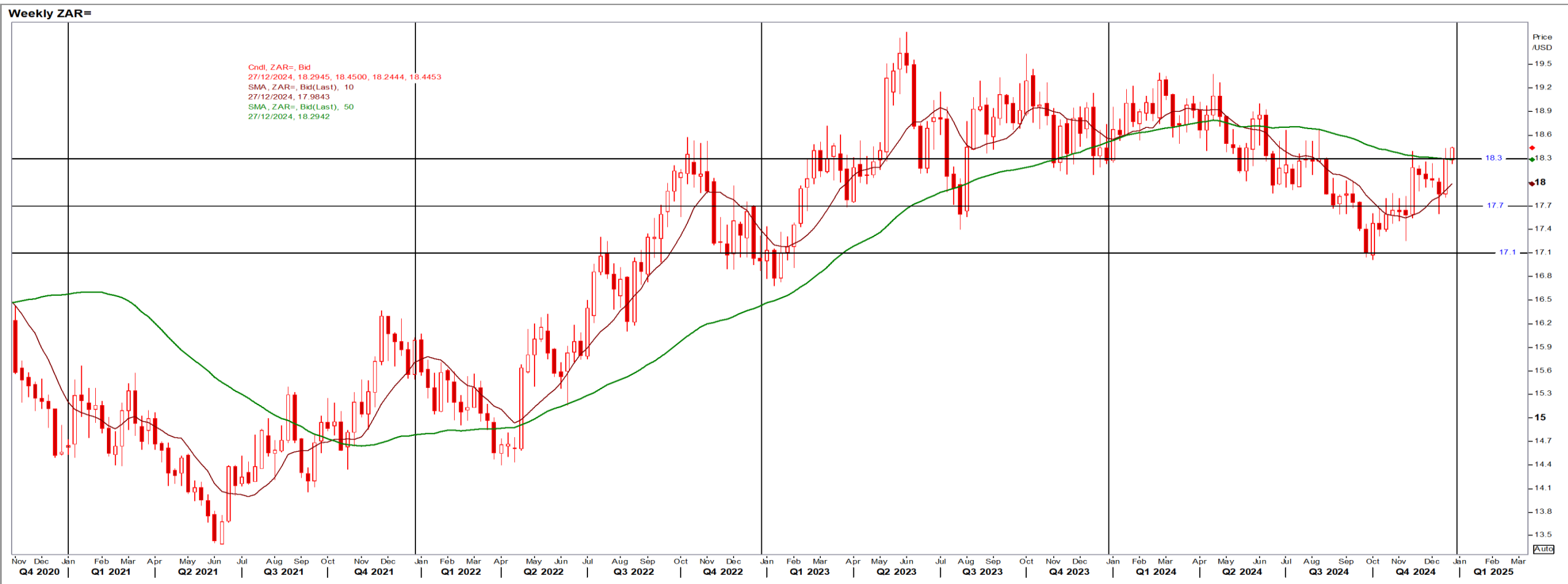
# Parity Movements (implied price moves)

USA Movement (Overnight)		Cents	Currencies	24-Dec-24	08:06:09
<b>CORN CBOT (Mar25)</b>	<b>447.50</b>	<b>-0.25</b>	<b>R/\$ last</b>	<b>R 18.5413</b>	<b>0.1489</b>
<b>SOY CBOT (Mar25)</b>	<b>974.25</b>	<b>-6.50</b>	<b>Euro=</b>	<b>\$ 1.0395</b>	<b>0.0004</b>
<b>W1 CBOT (Mar25)</b>	<b>537.50</b>	<b>0.00</b>	<b>GOLD</b>	<b>\$ 2,618</b>	<b>-1.0200</b>
<b>W2 KCBT (Mar25)</b>	<b>548.25</b>	<b>-1.25</b>	<b>BRENT</b>	<b>\$ 72.97</b>	<b>0.23</b>
<b>BlackSea Wheat (Near)</b>	<b>229.00</b>	<b>-1.00</b>			
<b>Index Change</b>					
<b>Maize (Mar25)</b>	<b>3,266</b>	<b>R 24.42</b>	<b>Wheat CBOT (Mar25)</b>	<b>3,662</b>	<b>R 29.41</b>
<b>Soya (Mar25)</b>	<b>6,637</b>	<b>R 9.37</b>	<b>Wheat Kansas (Mar25)</b>	<b>3,735</b>	<b>R 21.55</b>
<b>BlackSea Wheat Near</b>	<b>4,246</b>	<b>R 15.71</b>	<b>RAND EFFECT ON WHEAT PARITY</b>	<b>3,744</b>	<b>R 30.06</b>

# South African Rand (ZAR)

USD/ZAR Weekly: Bearish > R18.30

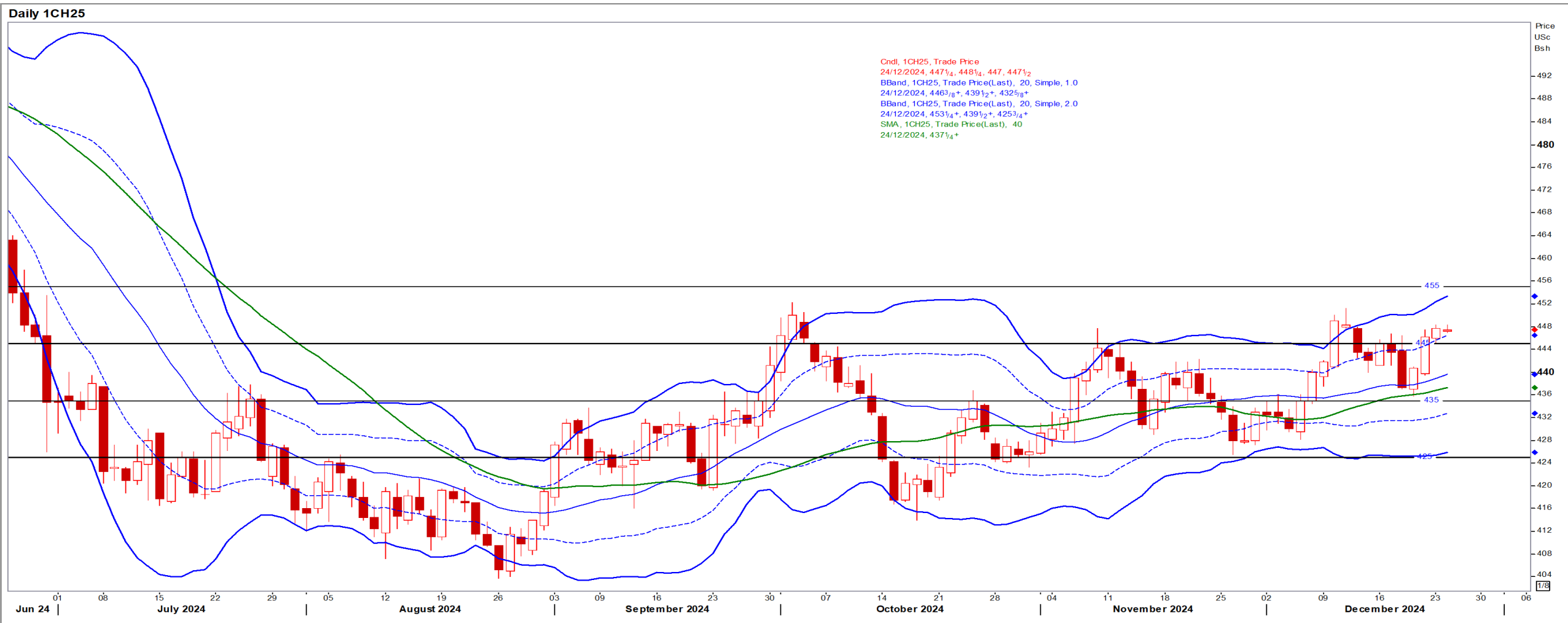
- ZAR weakened in thin trade ahead of year-end which amplify speculative price moves – Reuters News.
- While weaker than R18.30 the medium-term ZAR is bearish.



# USA Corn

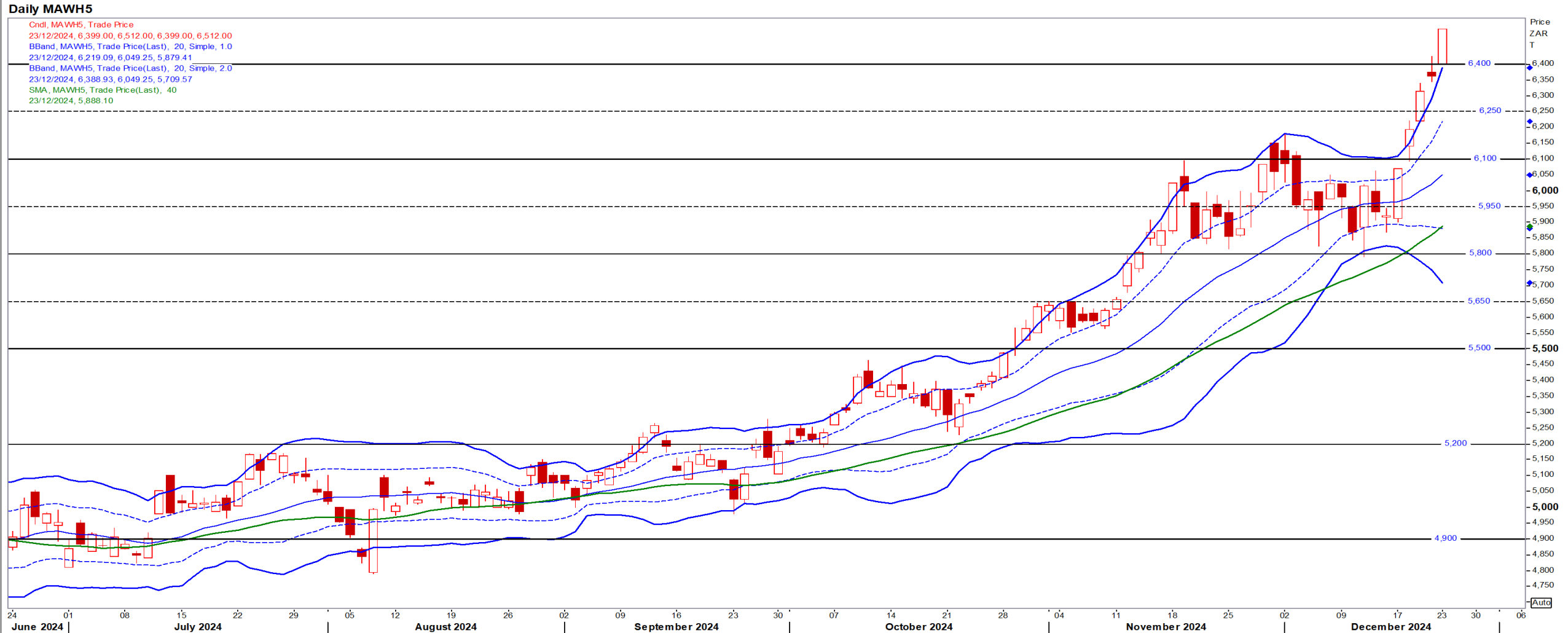
Mar25 Daily: Contract status bullish > \$4.35

- Corn eased as traders set final positions before the Christmas holiday break with a stronger dollar weighing on the market – Reuters News.



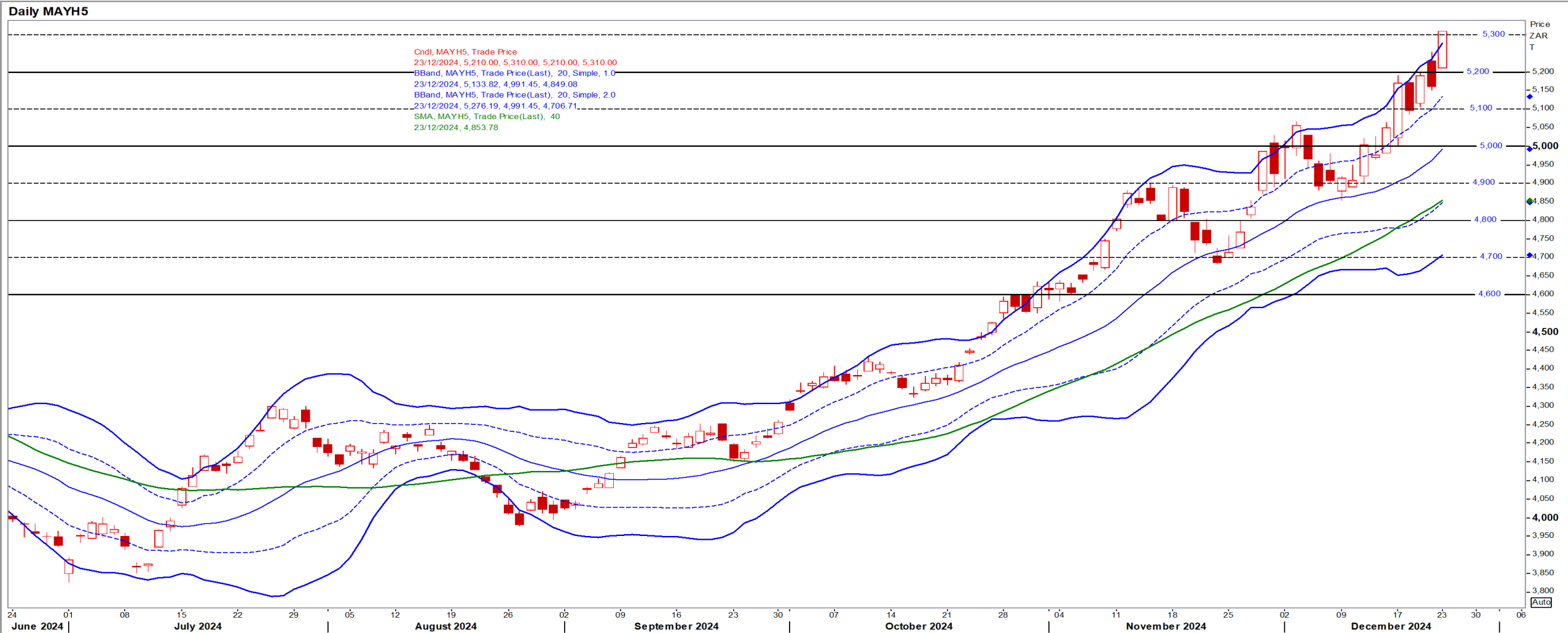
# White Maize

Mar25 Daily: Contract status very bullish > R5900



# Yellow Maize

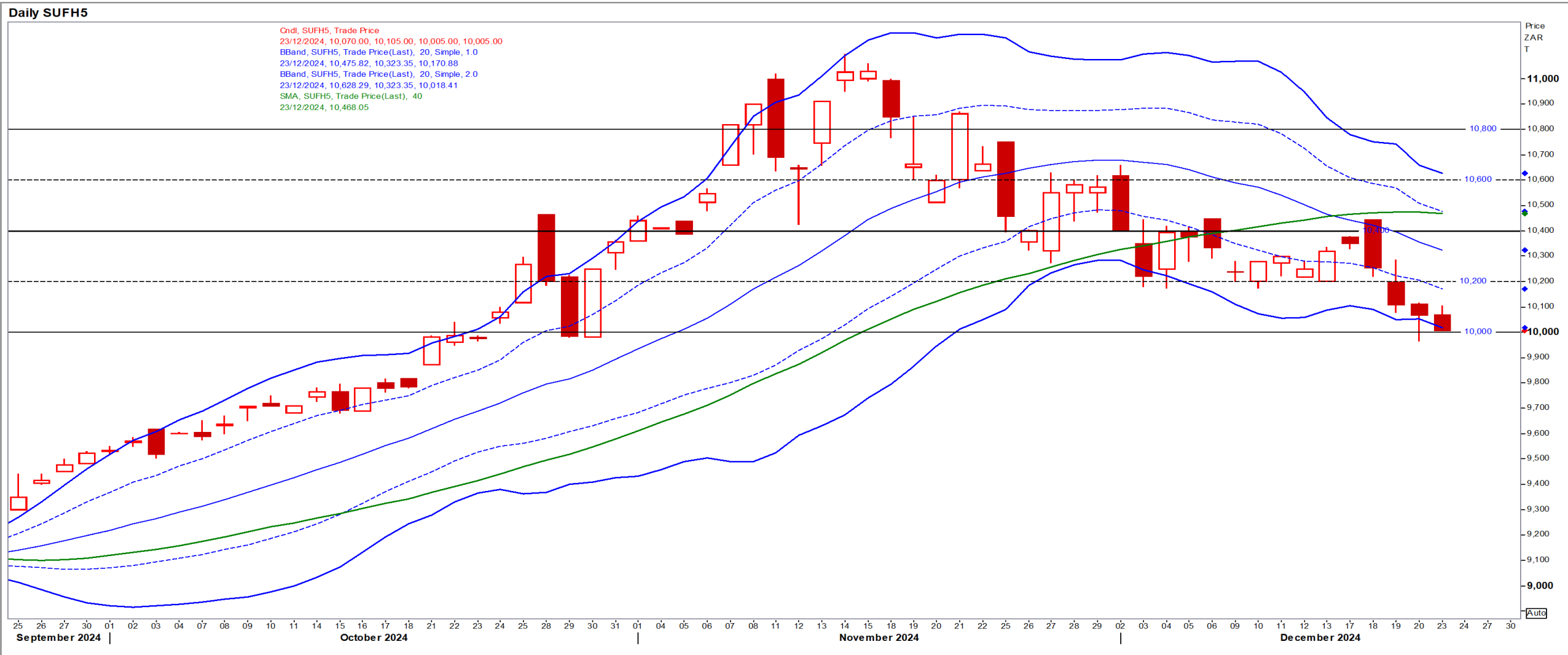
Mar25 Daily: Contract status very bullish > R4850





# Suns

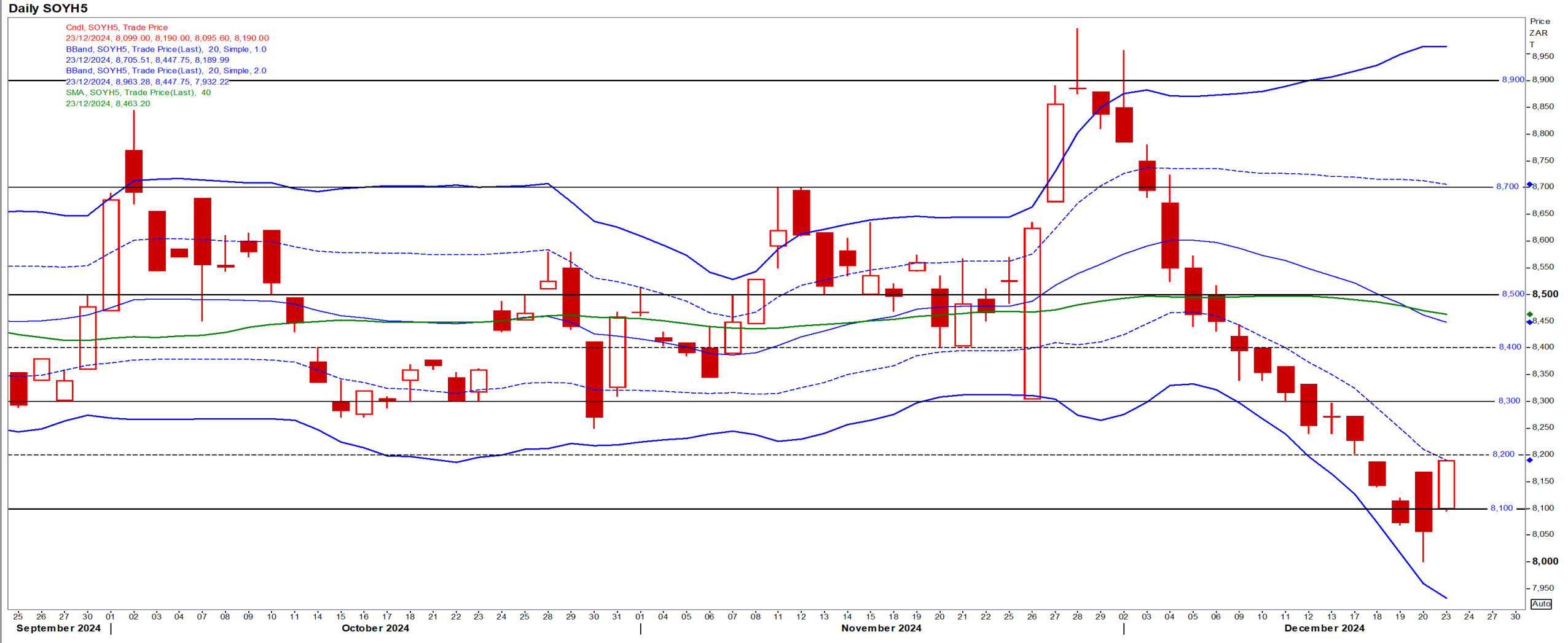
Mar25 Daily: Contract status bearish < R10400





# SA Soya

Mar25 Daily: Contract status very bearish < R8500



# US KANSAS Wheat

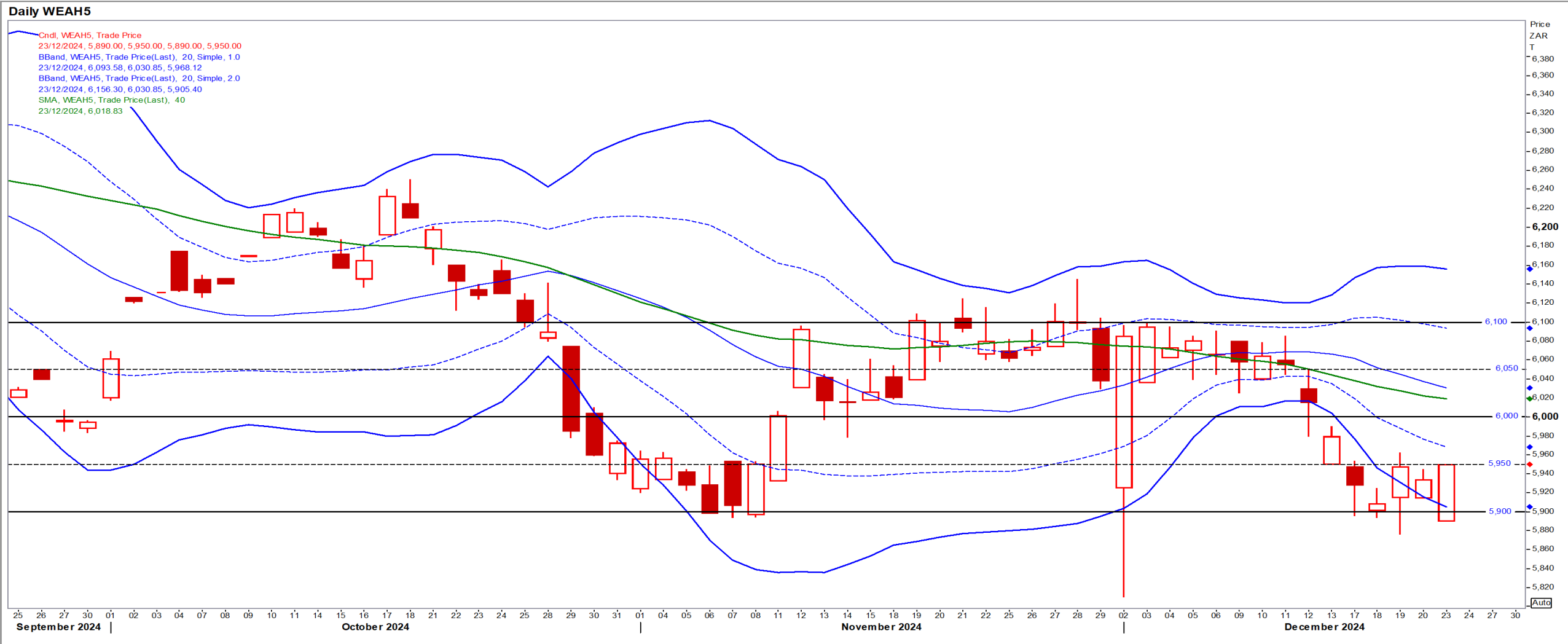
Mar25 Daily: Contract bearish < \$5.65

- Wheat eased as traders set final positions before the Christmas holiday break with a stronger dollar weighing on the market – Reuters News.



# SA Wheat

Mar25 Daily: Contract status very bearish < R6000



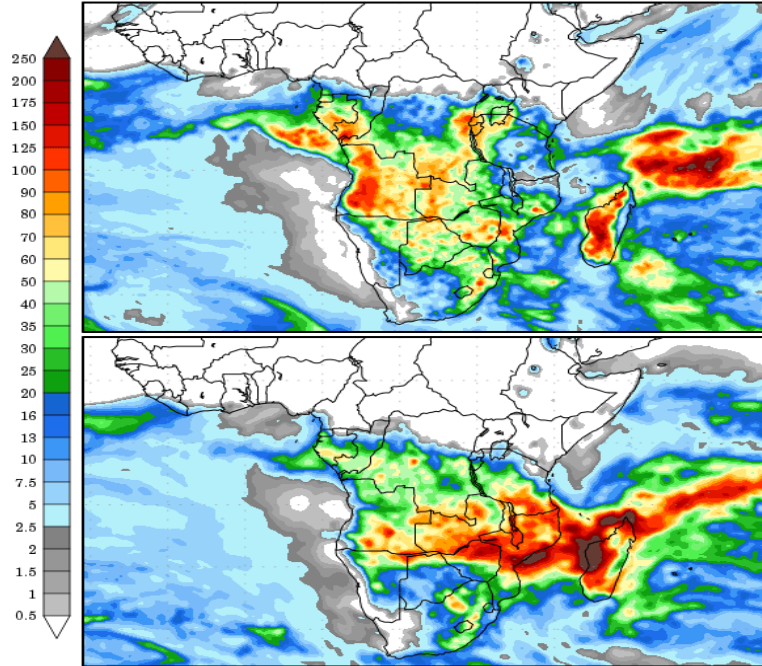
# Weather

## SA Medium-term Precipitation Forecasts

### Precipitation Forecasts

Precipitation (mm)  
during the period:

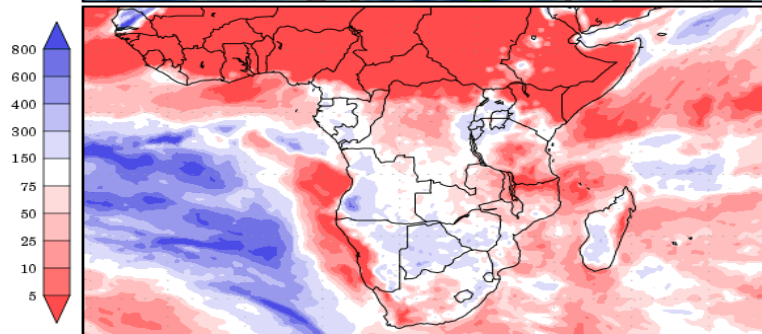
???, 23 DEC 2024 at 00Z  
-to-  
???, 31 DEC 2024 at 00Z



???, 31 DEC 2024 at 00Z  
-to-  
???, 08 JAN 2025 at 00Z

Precipitation (% of normal)  
during the first period:

???, 23 DEC 2024 at 00Z  
-to-  
???, 31 DEC 2024 at 00Z

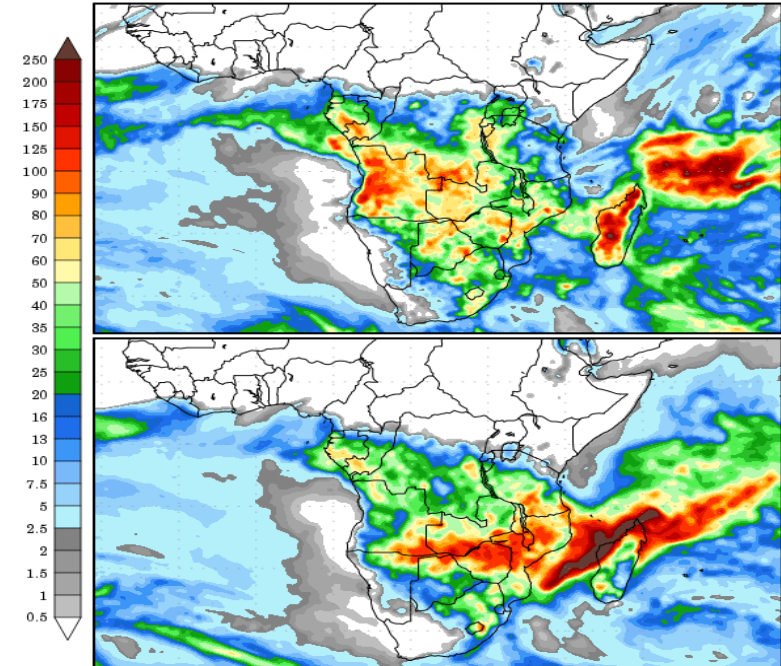


Precipitation forecasts from the National Centers for Environmental Prediction.  
Normal rainfall derived from Xie-Arkin (CMAP) Monthly Climatology for 1979-2003.  
Forecast Initialization Time: 00Z23DEC2024

### Precipitation Forecasts

Precipitation (mm)  
during the period:

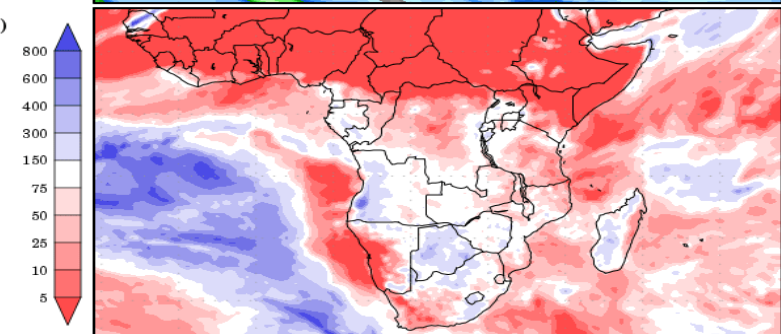
???, 24 DEC 2024 at 00Z  
-to-  
???, 01 JAN 2025 at 00Z



???, 01 JAN 2025 at 00Z  
-to-  
???, 09 JAN 2025 at 00Z

Precipitation (% of normal)  
during the first period:

???, 24 DEC 2024 at 00Z  
-to-  
???, 01 JAN 2025 at 00Z



Precipitation forecasts from the National Centers for Environmental Prediction.  
Normal rainfall derived from Xie-Arkin (CMAP) Monthly Climatology for 1979-2003.  
Forecast Initialization Time: 00Z24DEC2024