

Daily market
Report
27 Dec 24



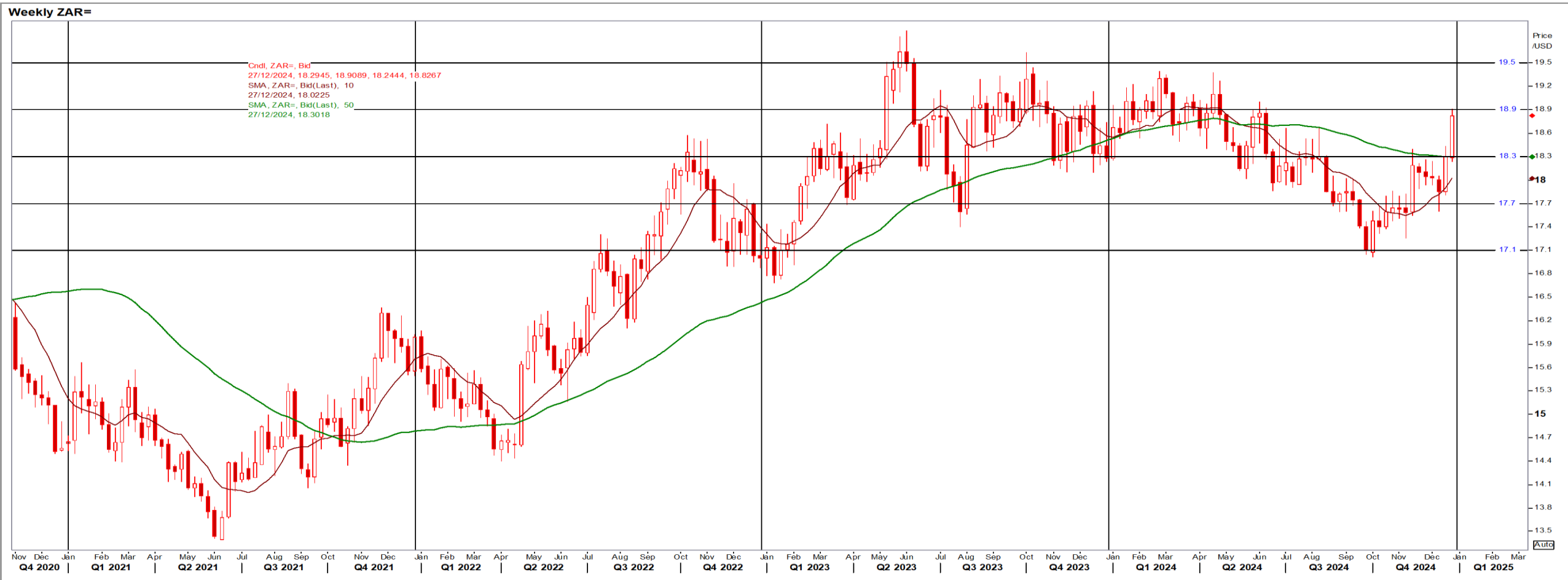
Parity Movements (implied price moves)

USA Movement (Overnight)	Cents	Currencies	27-Dec-24	07:57:24	
CORN CBOT (Mar25)	453.25	5.75	R/\$ last	R 18.8259	0.2827
SOY CBOT (Mar25)	995.25	17.00	Euro=	\$ 1.0410	0.0018
W1 CBOT (Mar25)	540.75	1.50	GOLD	\$ 2,632	17.7930
W2 KCBT (Mar25)	549.75	-0.75	BRENT	\$ 73.26	0.05
BlackSea Wheat (Near)	229.00	0.00			
Index Change					
Maize (Mar25)	3,359	R 92.42	Wheat CBOT (Mar25)	3,741	R 66.39
Soya (Mar25)	6,884	R 219.19	Wheat Kansas (Mar25)	3,803	R 51.99
BlackSea Wheat Near	4,311	R 64.74	RAND EFFECT ON WHEAT PARITY	3,808	R 57.18

South African Rand (ZAR)

USD/ZAR Weekly: Bearish > R18.30

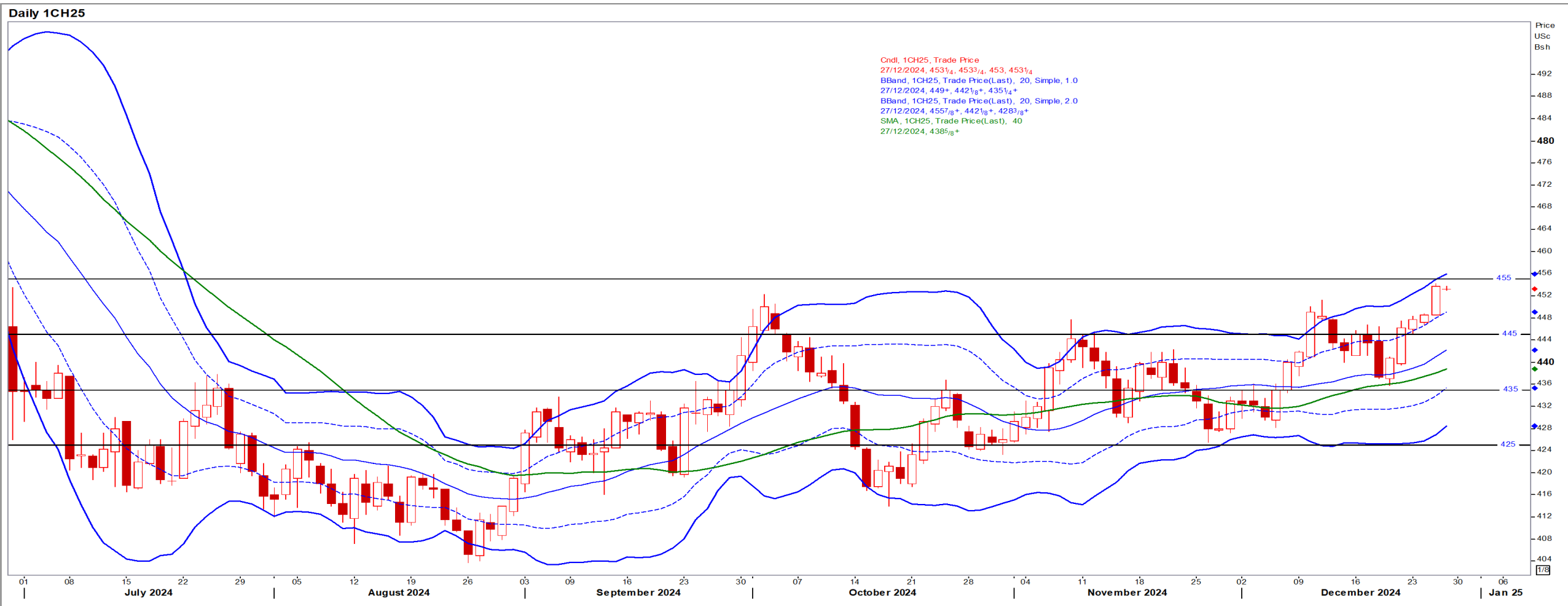
- ZAR like most EM currencies edged lower in thin holiday trading under pressure from a strong USD and rising Treasury yields – Reuters News.
- While weaker than R18.30 the medium-term ZAR is bearish.



USA Corn

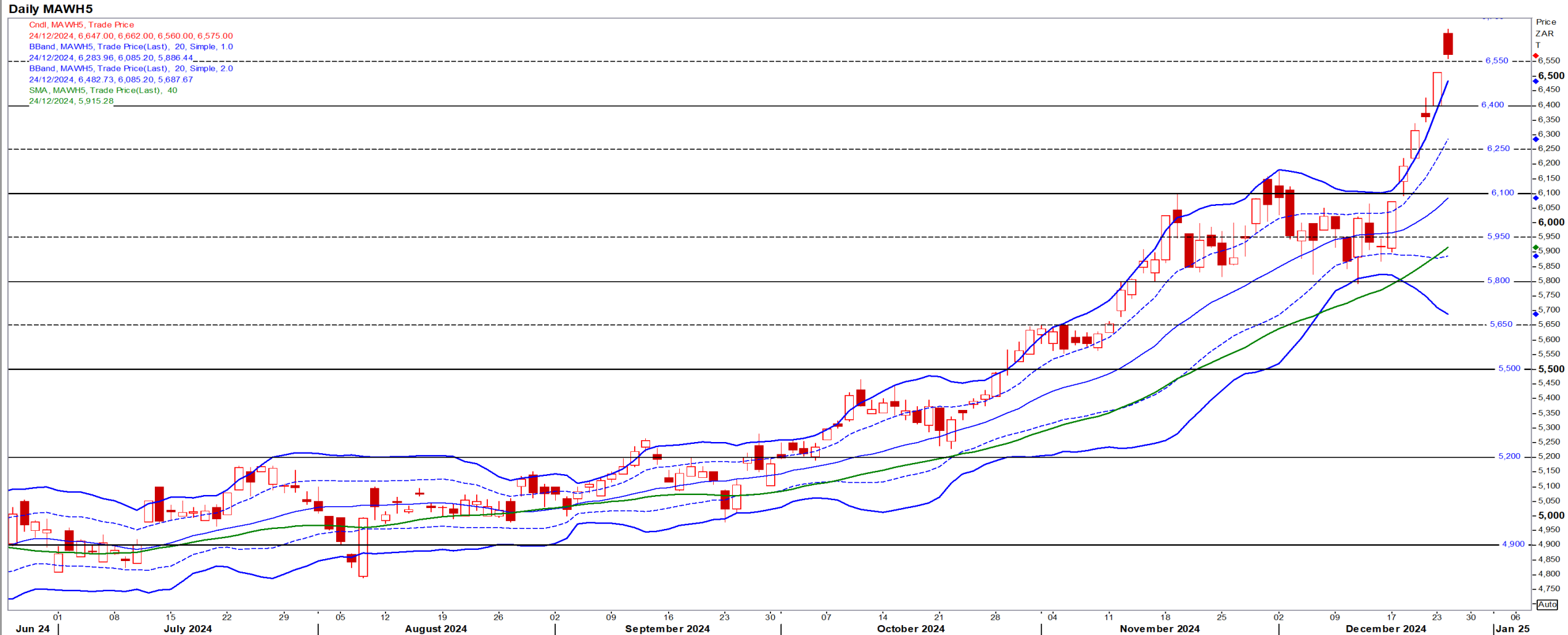
Mar25 Daily: Contract status bullish > \$4.35

- Corn hit 6 month high on spillover strength from wheat & soybeans in thin trade and on expectations of tightening US corn supplies – Reuters News.



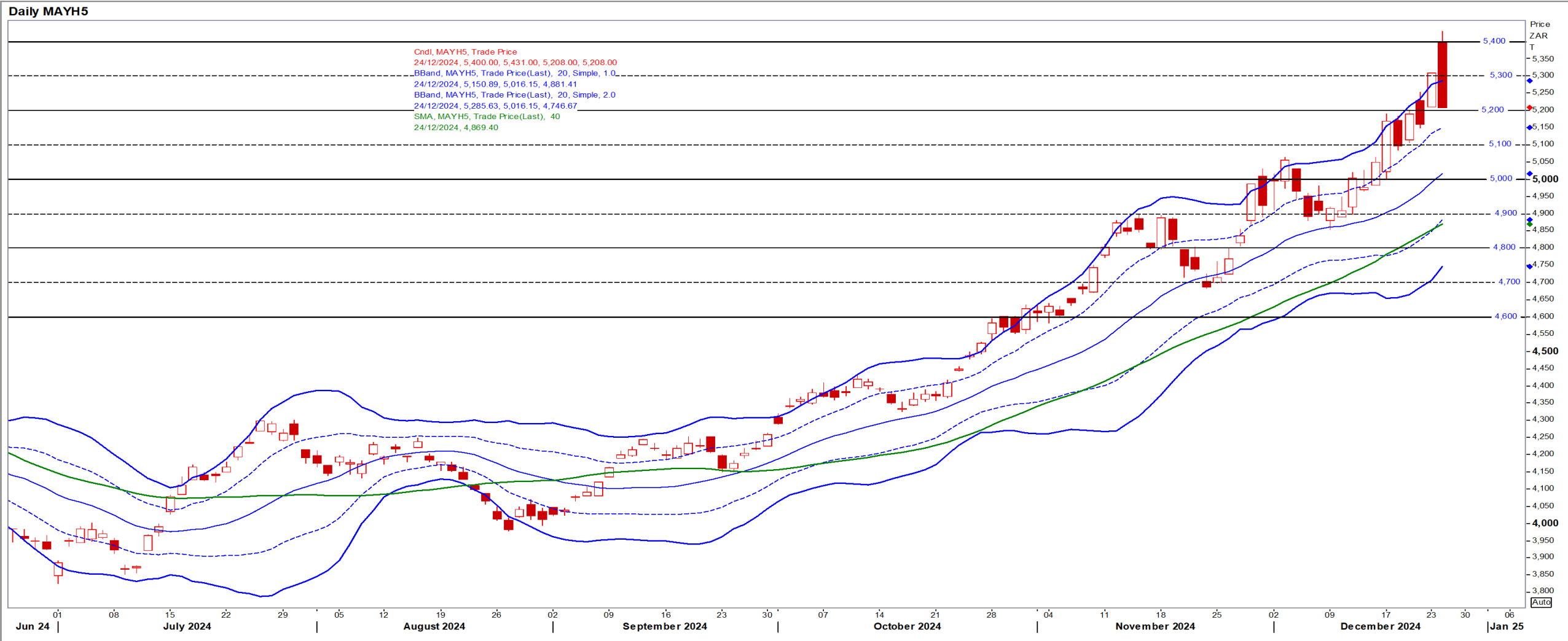
White Maize

Mar25 Daily: Contract status very bullish > R5900



Yellow Maize

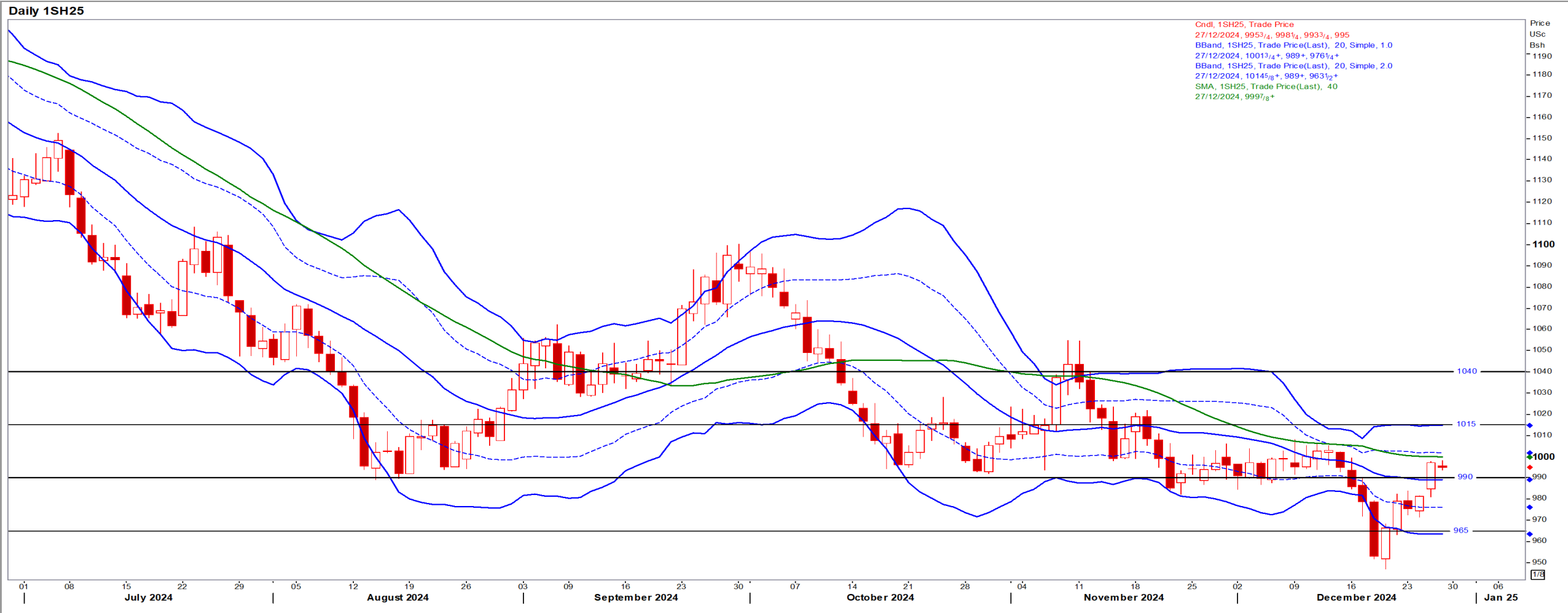
Mar25 Daily: Contract status very bullish > R4900



USA Soya

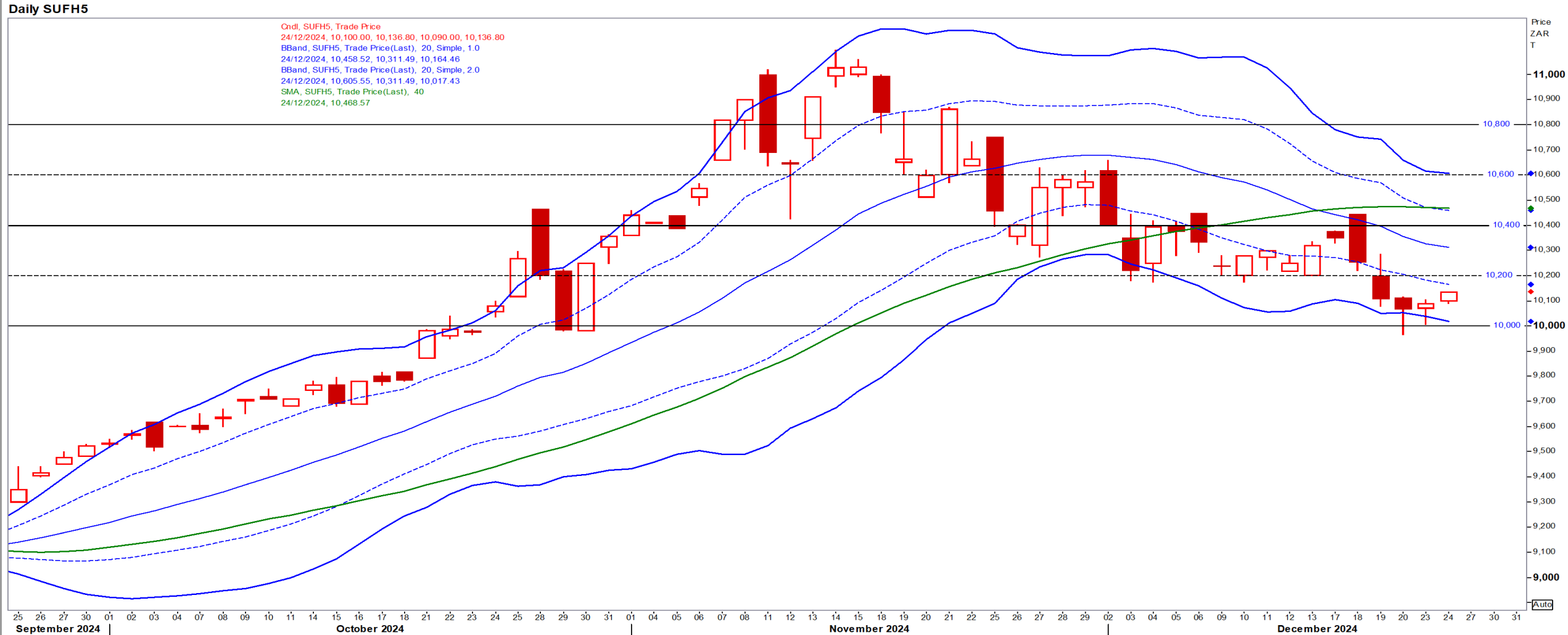
Mar25 Daily: Contract status bearish < \$10.00

- Beans rose and soymeal touched a 2 month high on dry weather worries in Argentina that prompted speculators to exit shorts – Reuters News.



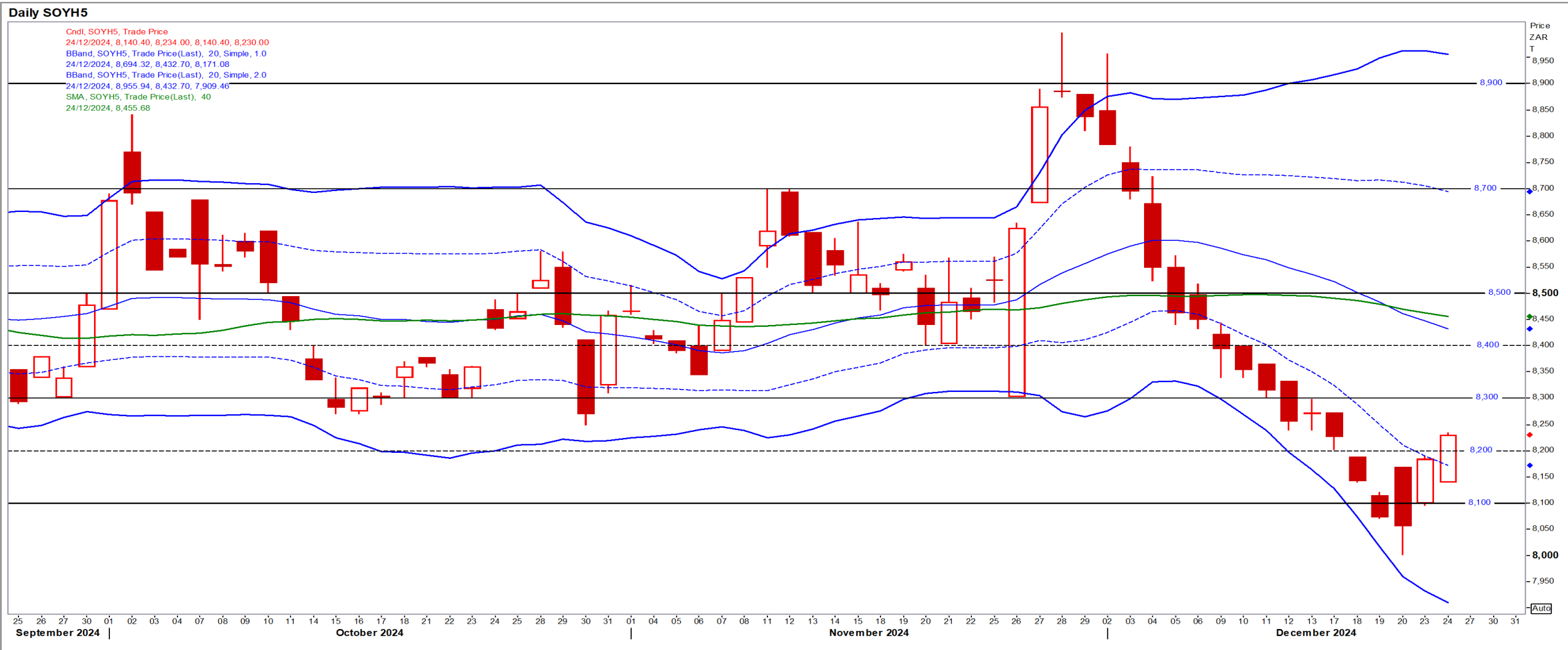
Suns

Mar25 Daily: Contract status bearish < R10400



SA Soya

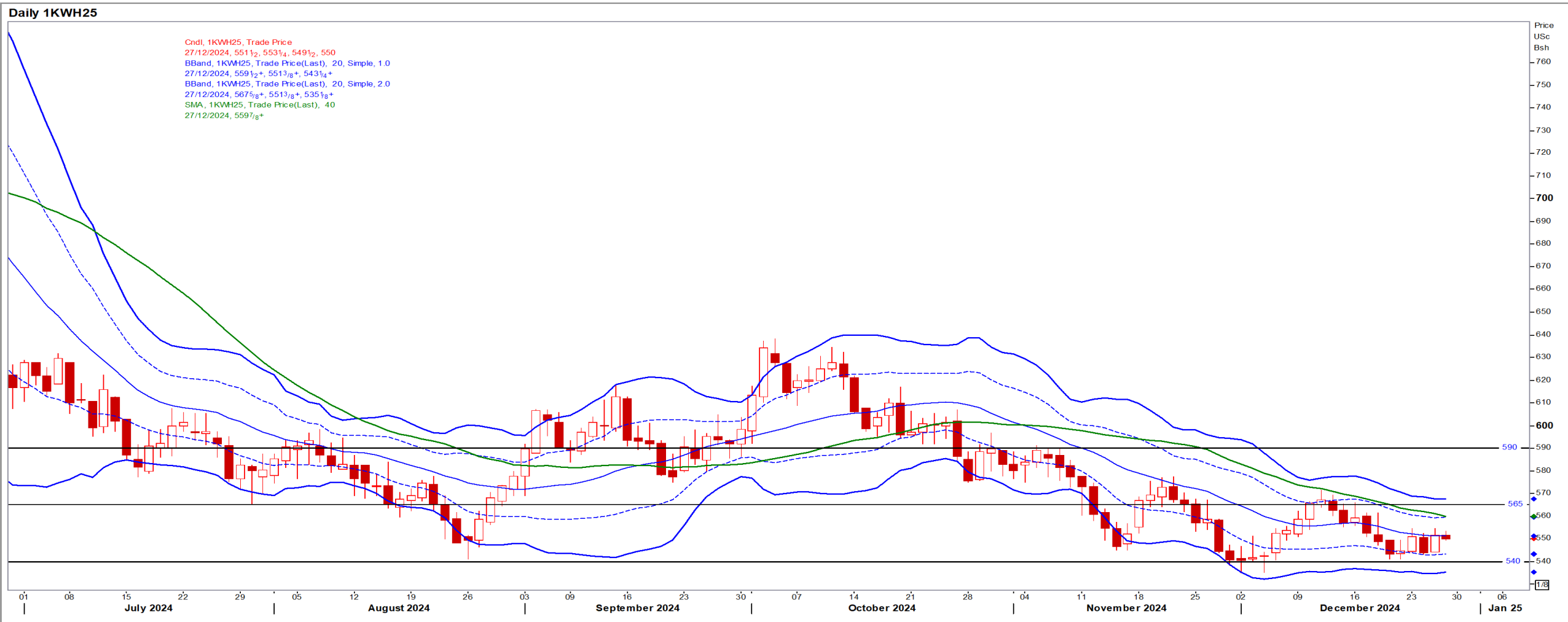
Mar25 Daily: Contract status very bearish < R8500



US KANSAS Wheat

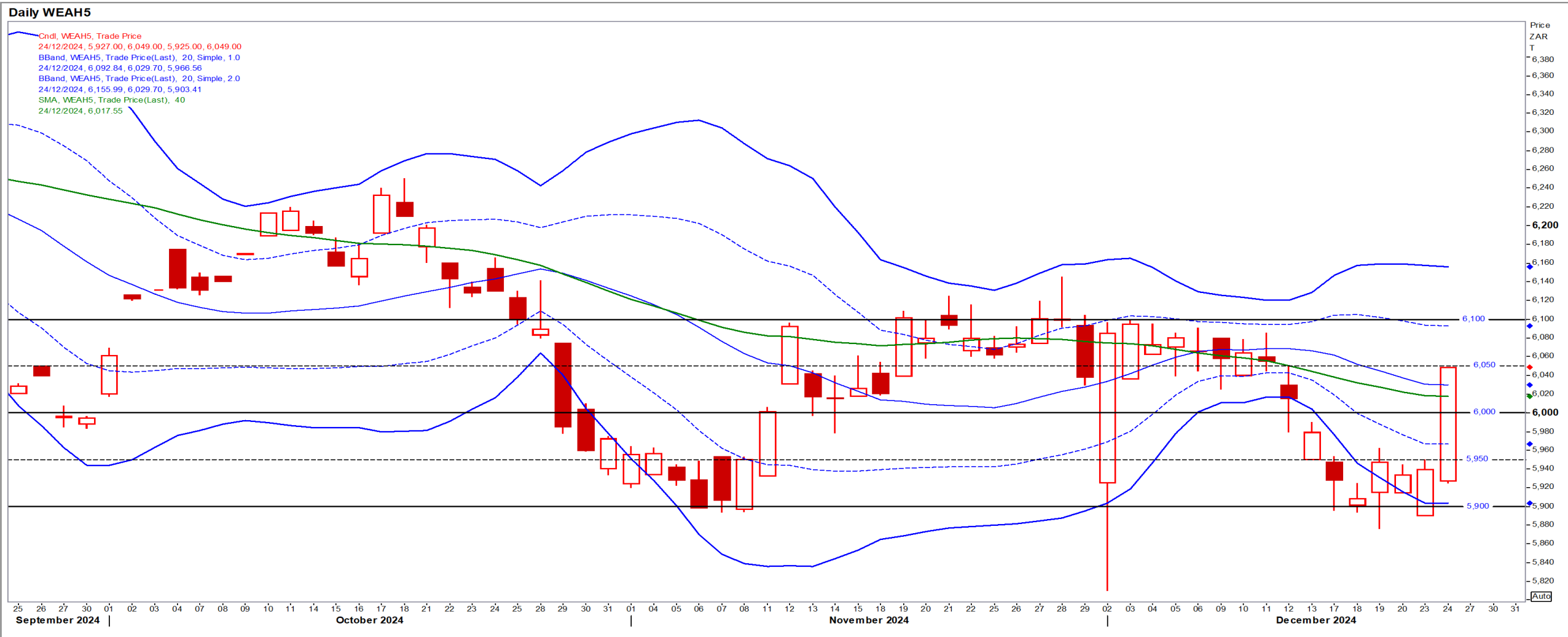
Mar25 Daily: Contract bearish < \$5.65

- Wheat closed higher on short-covering amid thin trade and on news of a massive wheat purchase by Algeria – Reuters News.



SA Wheat

Mar25 Daily: Contract status sideways to bullish > R6000



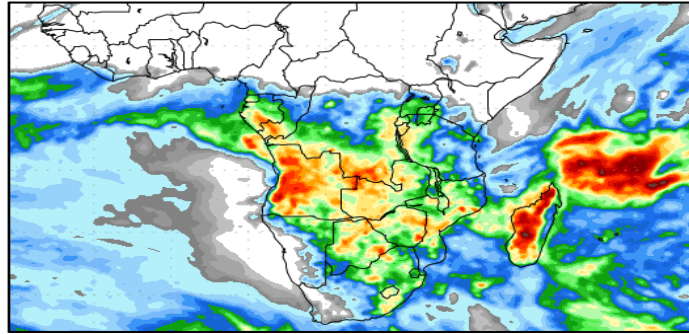
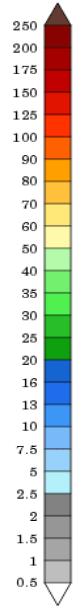
Weather

SA Medium-term Precipitation Forecasts

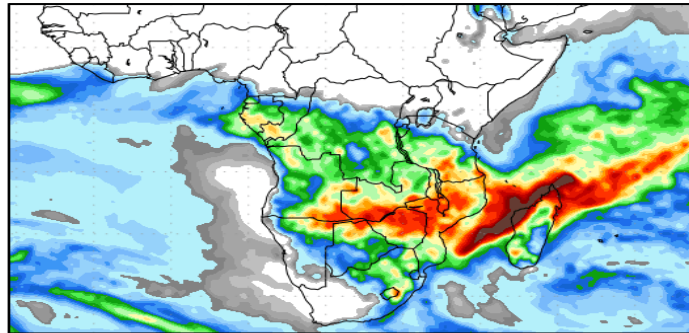
Precipitation Forecasts

Precipitation (mm)
during the period:

???, 24 DEC 2024 at 00Z
-to-
???, 01 JAN 2025 at 00Z

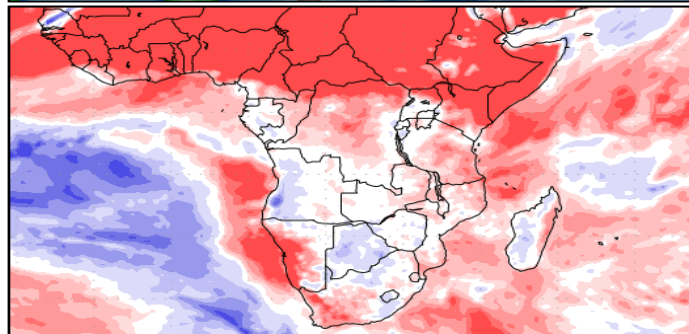
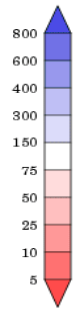


???, 01 JAN 2025 at 00Z
-to-
???, 09 JAN 2025 at 00Z



Precipitation (% of normal)
during the first period:

???, 24 DEC 2024 at 00Z
-to-
???, 01 JAN 2025 at 00Z



Precipitation forecasts from the National Centers for Environmental Prediction.
Normal rainfall derived from Xie-Arkin (CMAP) Monthly Climatology for 1979-2003.
Forecast Initialization Time: 00Z24DEC2024

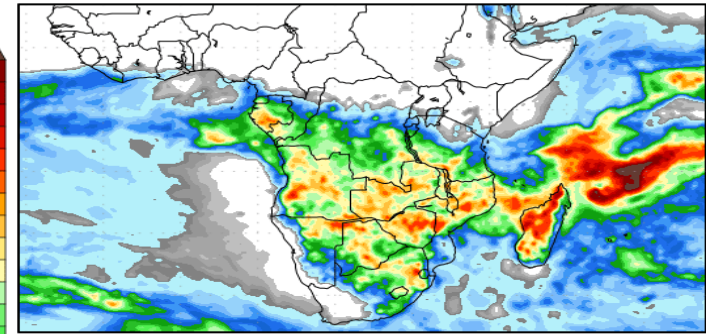
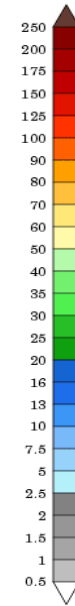
GrADS/COLA

GrADS/COLA

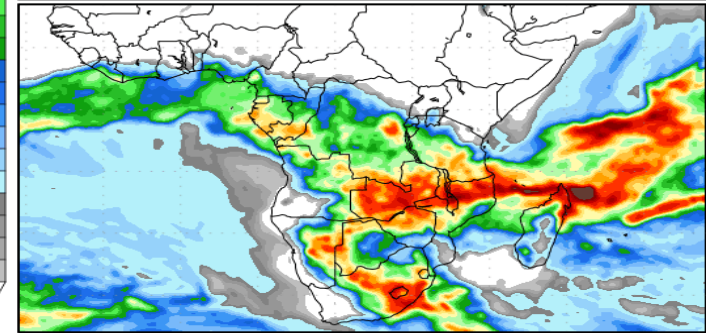
Precipitation Forecasts

Precipitation (mm)
during the period:

???, 27 DEC 2024 at 00Z
-to-
???, 04 JAN 2025 at 00Z

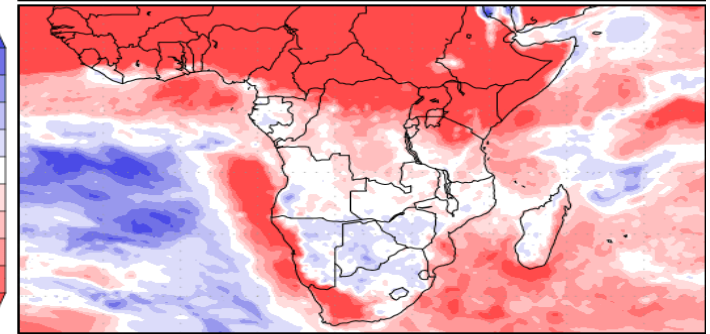
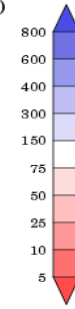


???, 04 JAN 2025 at 00Z
-to-
???, 12 JAN 2025 at 00Z



Precipitation (% of normal)
during the first period:

???, 27 DEC 2024 at 00Z
-to-
???, 04 JAN 2025 at 00Z



Precipitation forecasts from the National Centers for Environmental Prediction.
Normal rainfall derived from Xie-Arkin (CMAP) Monthly Climatology for 1979-2003.
Forecast Initialization Time: 00Z27DEC2024