

Daily market
Report
24 Feb 25



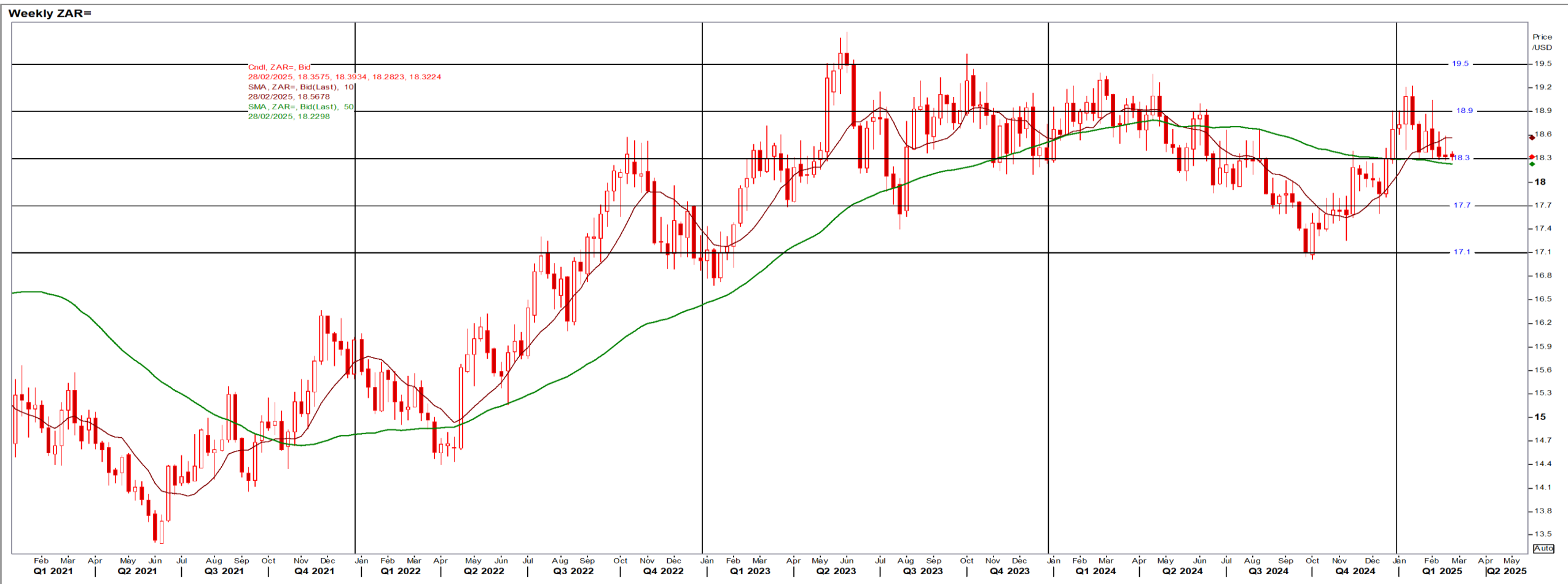
Parity Movements (implied price moves)

USA Movement (Overnight)		Cents	Currencies	24-Feb-25	07:18:00
CORN CBOT (Jul25)	507.50	-8.75	R/\$ last	R 18.3194	-0.0331
SOY CBOT (May25)	1,056.00	-5.00	Euro=	\$ 1.0513	0.0044
W1 CBOT (May25)	599.00	-2.25	GOLD	\$ 2,941	12.1300
W2 KCBT (May25)	617.00	-3.50	BRENT	\$ 74.30	-1.88
BlackSea Wheat (Near)	228.00	0.00			
Index Change					
Maize (Jul25)	3,660	R -69.83	Wheat CBOT (May25)	4,032	R -22.46
Soya (May25)	7,107	R -46.56	Wheat Kansas (May25)	4,153	R -31.11
BlackSea Wheat Near	4,177	R -7.55	RAND EFFECT ON WHEAT PARITY	4,177	-R 7.55

South African Rand (ZAR)

USD/ZAR Weekly: Bearish > R18.30

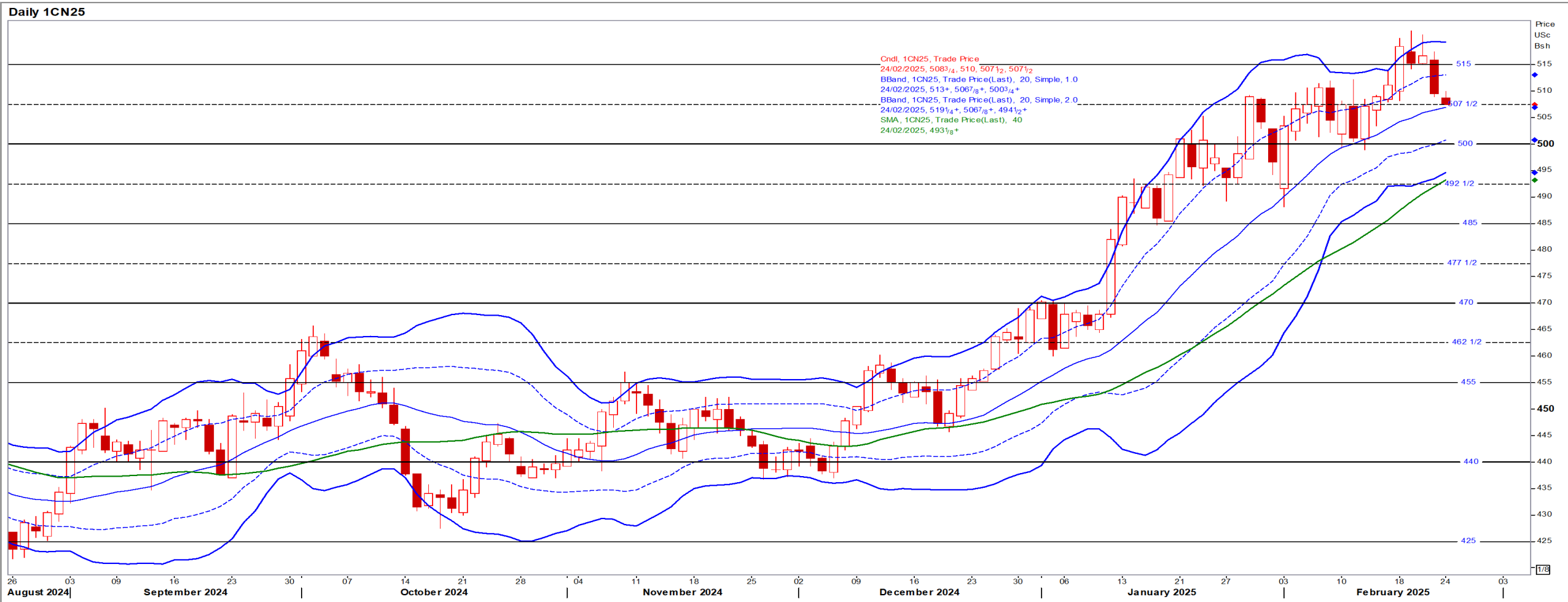
- ZAR stable on Friday after a volatile week in which it weakened over the budget postponement but recovered on a buoyant gold price – Reuters
- While weaker than R18.30 the medium-term ZAR is bearish.



USA Corn

Jul25 Daily: Contract status very bullish > \$4.70

- Corn closed down on profit-taking and expectations for an increased plantings figure this week as corn looks more profitable than beans – Reuters



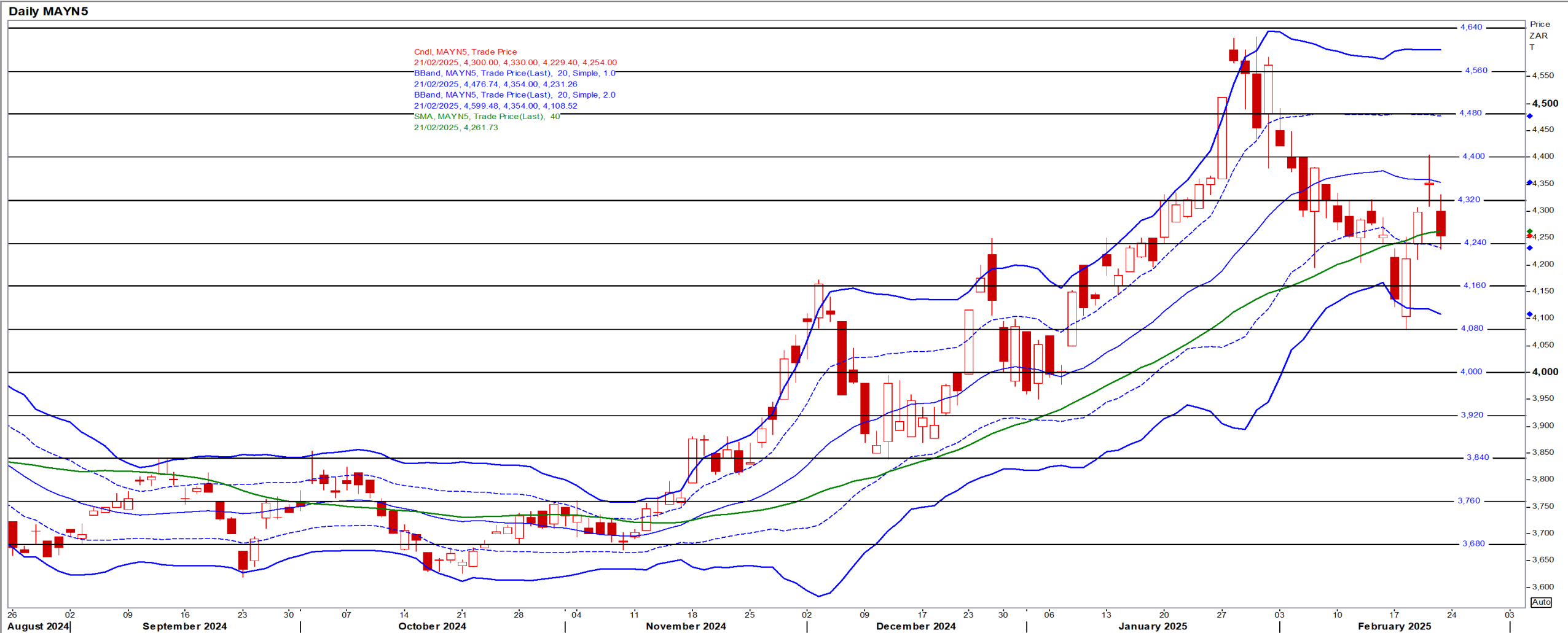
White Maize

Jul25 Daily: Contract status bearish < R4600



Yellow Maize

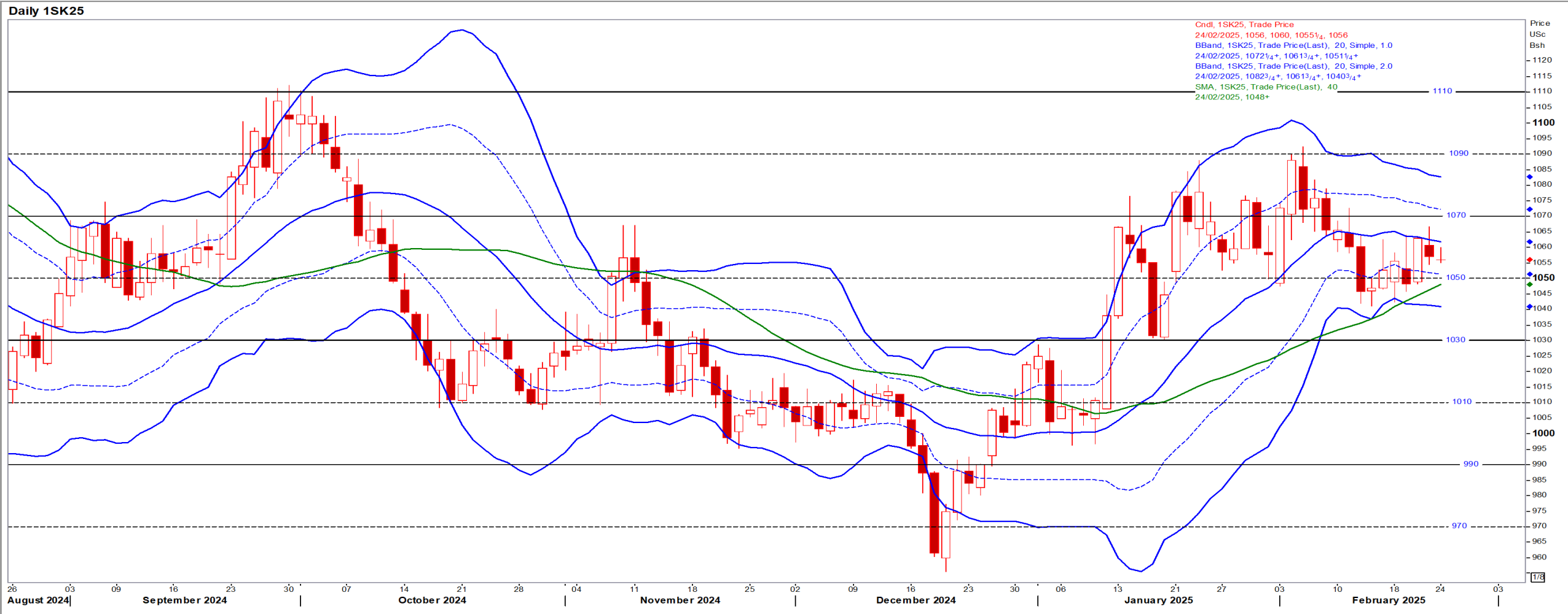
Jul25 Daily: Contract status bullish > R4160



USA Soya

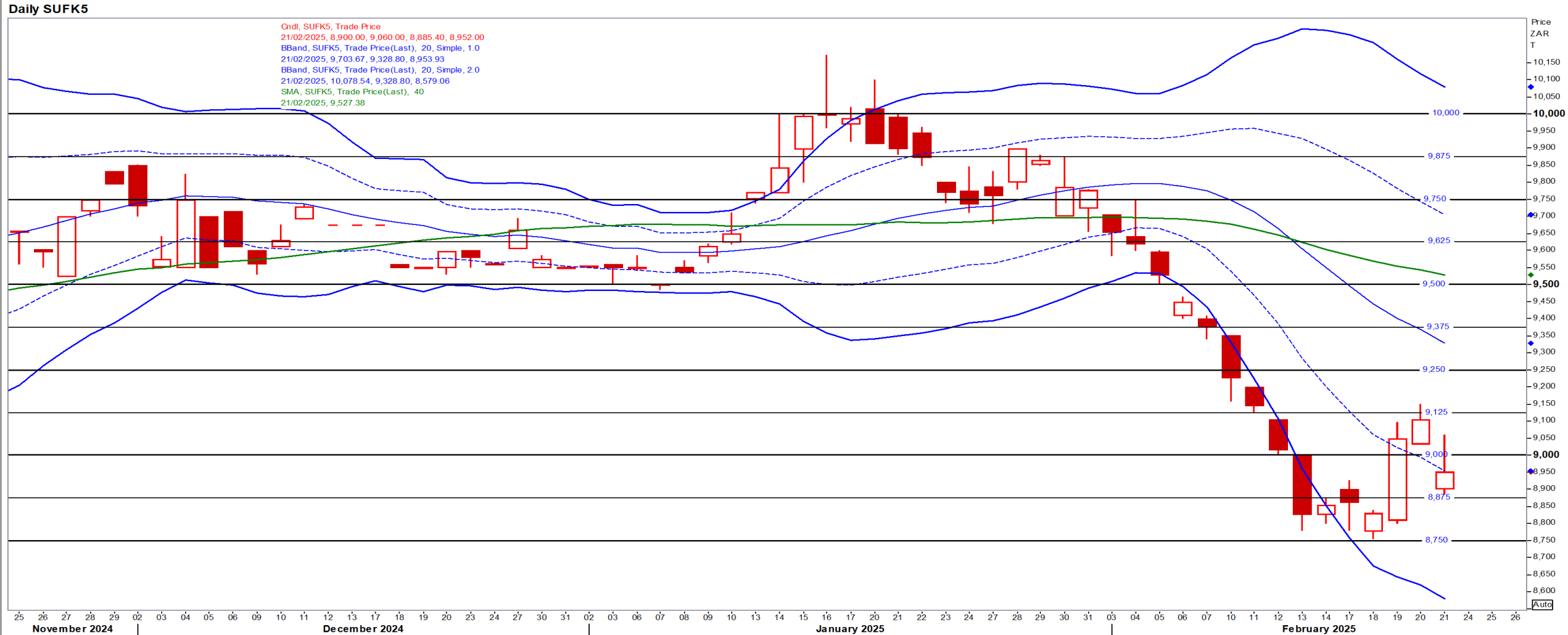
May25 Daily: Contract status bullish > \$10.30

- Beans ended lower as traders booked profits and on expectations of a record-large harvest in top-supplier Brazil – Reuters



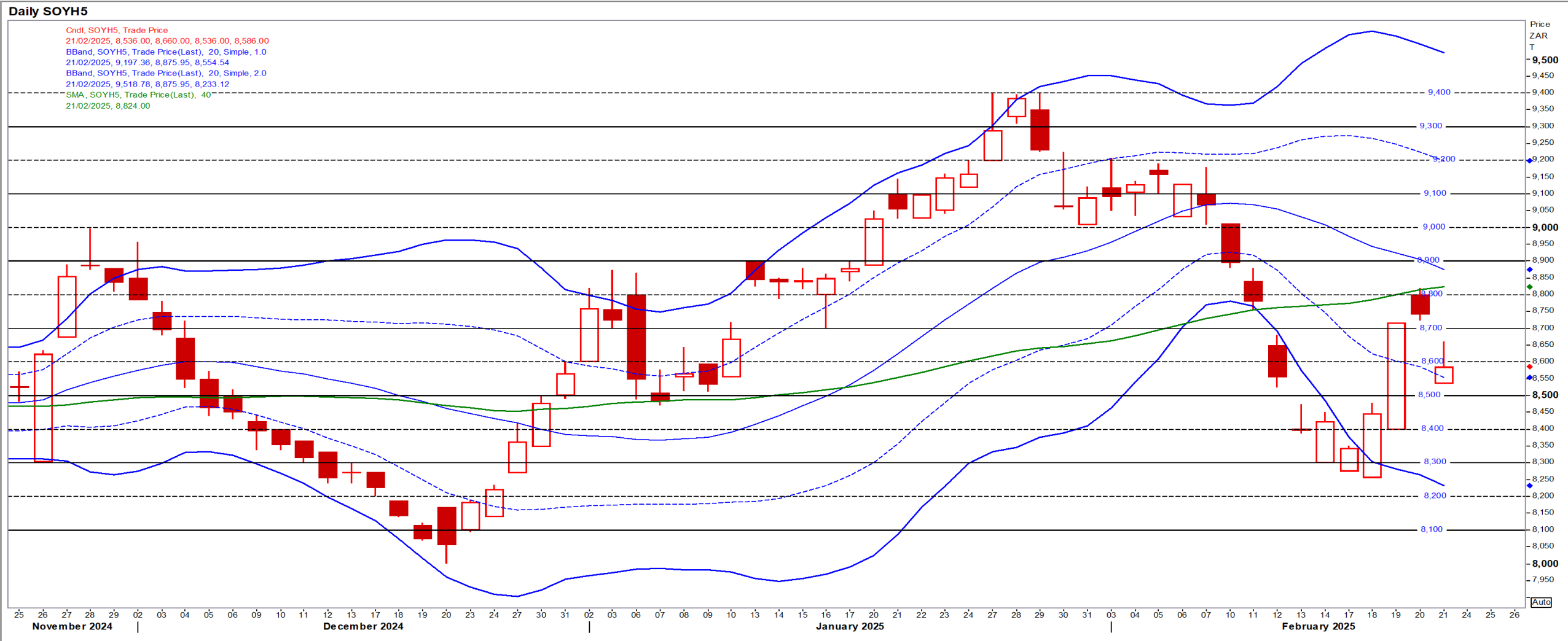
Suns

May25 Daily: Contract status very bearish < R9500



SA Soya

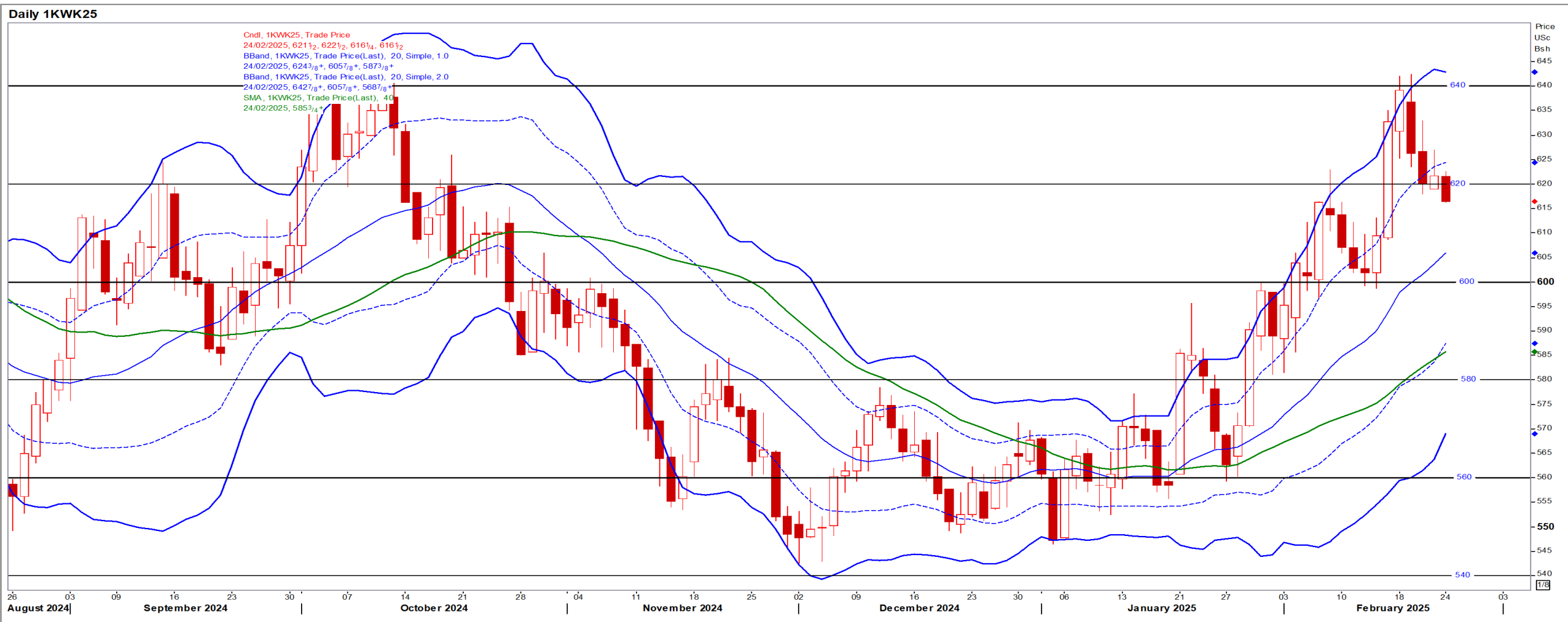
Mar25 Daily: Contract status very bearish < R8800 [No Refinitiv graph for May SoyB]



US KANSAS Wheat

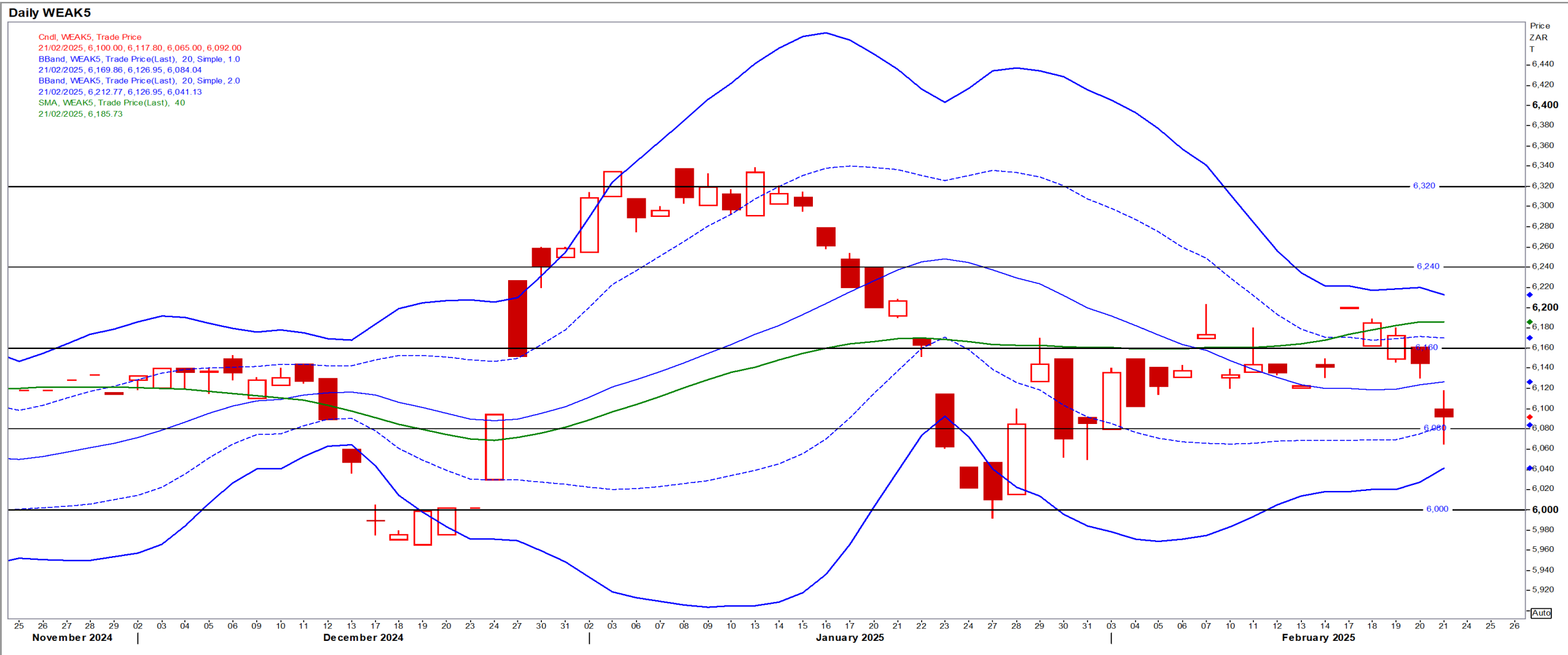
May25 Daily: Contract bullish > \$6.00

- Wheat finished higher on Friday on short covering and buying by commodity funds but cold weather concerns hurting dormant winter wheat eased – Reuters



SA Wheat

May25 Daily: Contract status bearish < R6160



Weather

SA Medium-term Precipitation Forecasts

Precipitation Forecasts

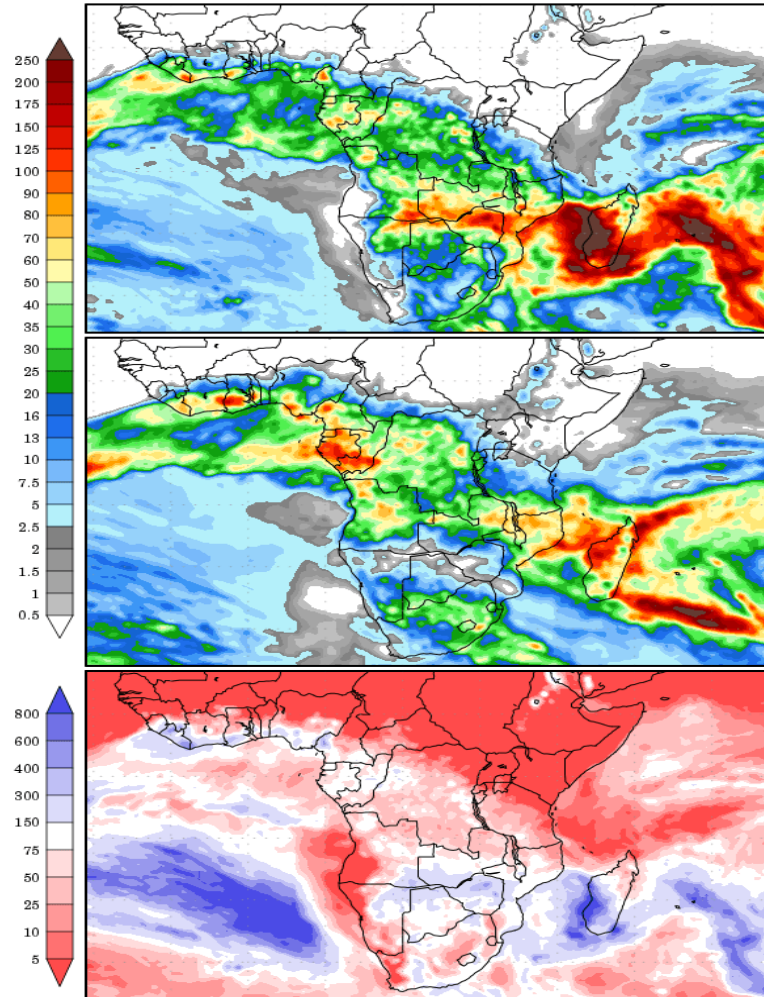
Precipitation (mm)
during the period:

???, 21 FEB 2025 at 00Z
-to-
???, 01 MAR 2025 at 00Z

???, 01 MAR 2025 at 00Z
-to-
???, 09 MAR 2025 at 00Z

Precipitation (% of normal)
during the first period:

???, 21 FEB 2025 at 00Z
-to-
???, 01 MAR 2025 at 00Z



Precipitation forecasts from the National Centers for Environmental Prediction.
Normal rainfall derived from Xie-Arkin (CMAP) Monthly Climatology for 1979-2003.
Forecast Initialization Time: 00Z21FEB2025

GrADS/COLA

GrADS/COLA

Precipitation Forecasts

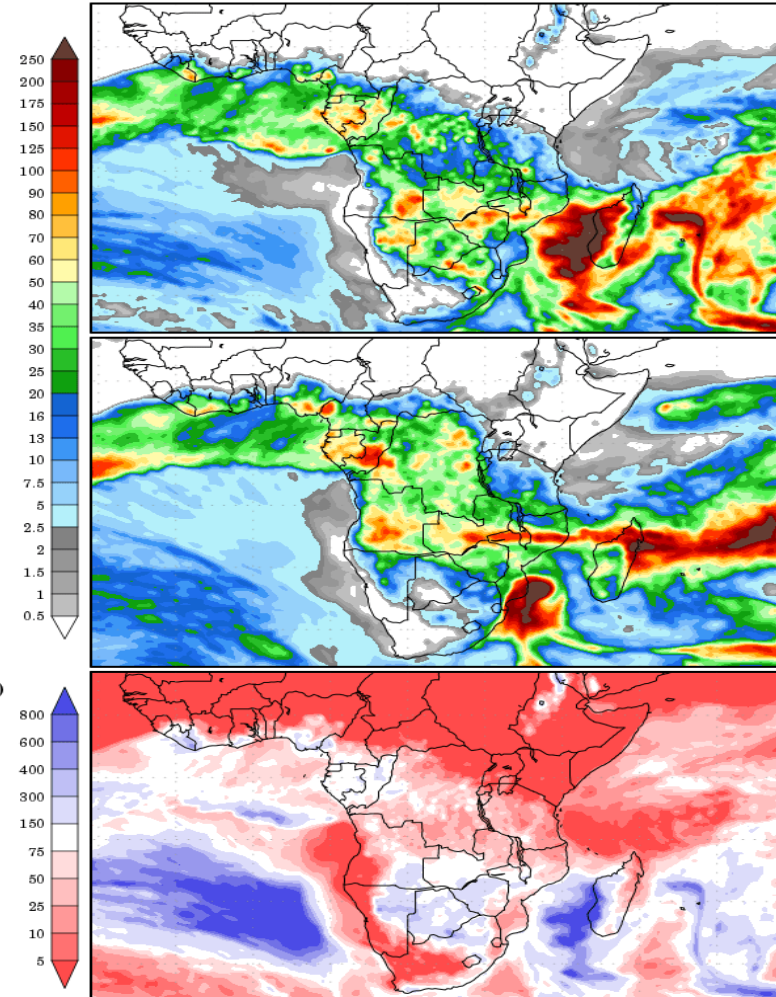
Precipitation (mm)
during the period:

???, 23 FEB 2025 at 00Z
-to-
???, 03 MAR 2025 at 00Z

???, 03 MAR 2025 at 00Z
-to-
???, 11 MAR 2025 at 00Z

Precipitation (% of normal)
during the first period:

???, 23 FEB 2025 at 00Z
-to-
???, 03 MAR 2025 at 00Z



Precipitation forecasts from the National Centers for Environmental Prediction.
Normal rainfall derived from Xie-Arkin (CMAP) Monthly Climatology for 1979-2003.
Forecast Initialization Time: 00Z23FEB2025

