

Daily market
Report
07 Mar 25



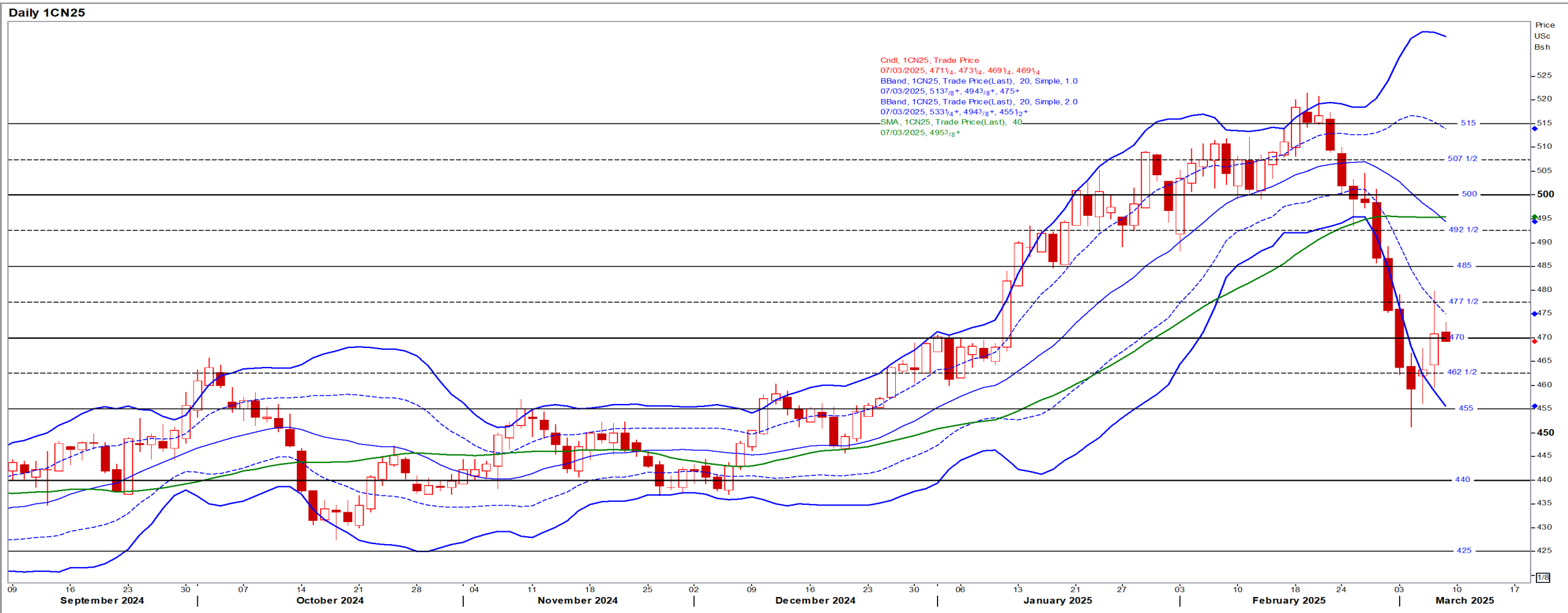
Parity Movements (implied price moves)

USA Movement (Overnight)		Cents	Currencies	07-Mar-25	07:34:25
CORN CBOT (Jul25)	469.25	3.50	R/\$ last	R 18.1216	-0.2077
SOY CBOT (May25)	1,025.00	4.50	Euro=	\$ 1.0812	0.0014
W1 CBOT (May25)	549.25	-2.00	GOLD	\$ 2,912	17.6900
W2 KCBT (May25)	559.50	-1.50	BRENT	\$ 69.57	-0.09
BlackSea Wheat (Near)	214.00	-3.00			
Index Change					
Maize (Jul25)	3,348	R -13.11	Wheat CBOT (May25)	3,657	R -55.39
Soya (May25)	6,824	R -47.91	Wheat Kansas (May25)	3,725	R -52.80
BlackSea Wheat Near	3,878	R -99.44	RAND EFFECT ON WHEAT PARITY	3,735	-R 42.81

USA Corn

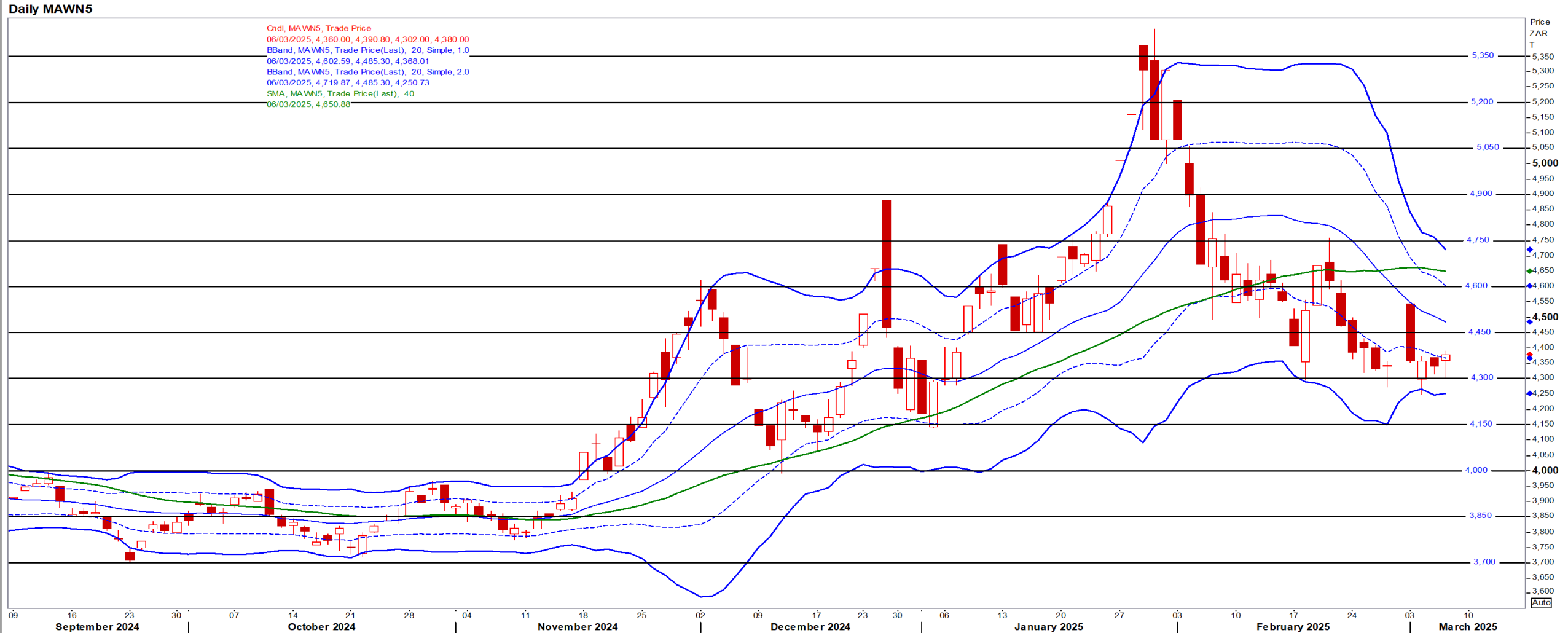
Jul25 Daily: Contract status bearish < \$4.70

- Corn ended higher as trade tensions eased after Trump exempted Mexico goods for a month from the 25% tariffs he had imposed – Reuters



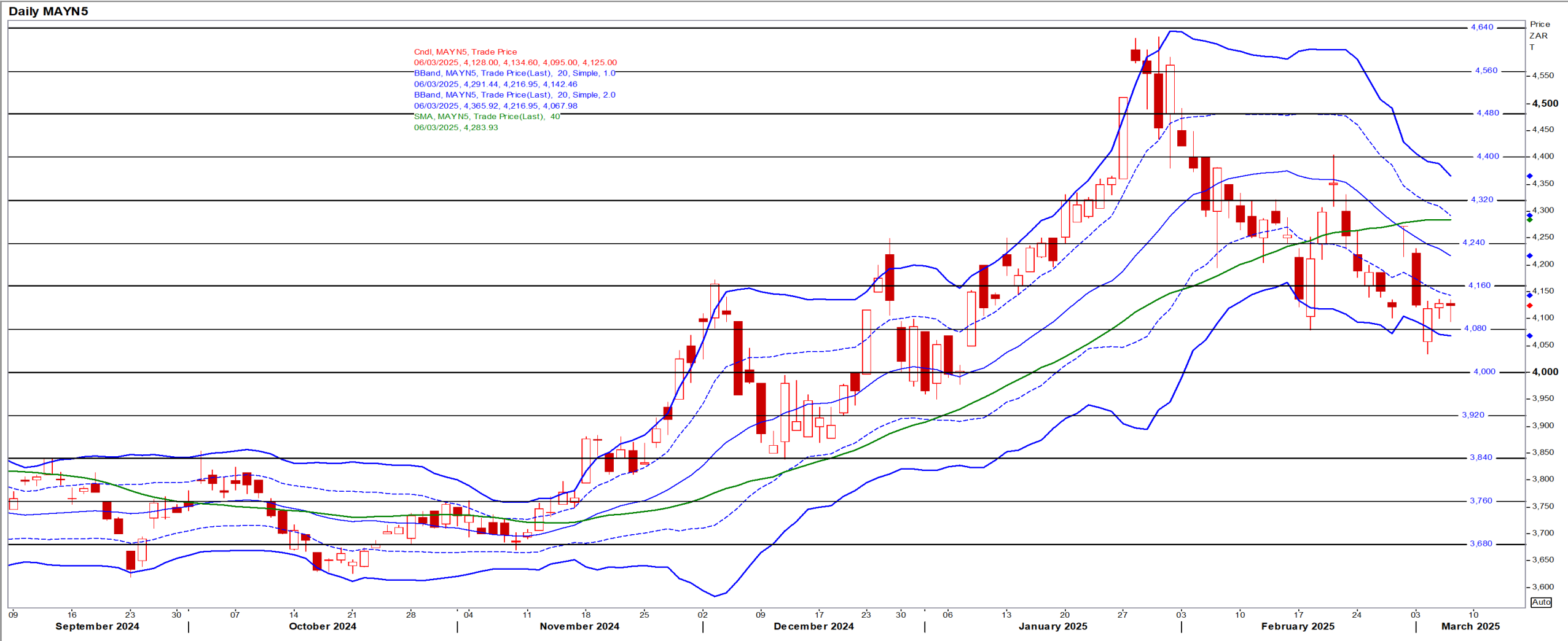
White Maize

Jul25 Daily: Contract status bearish < R4600



Yellow Maize

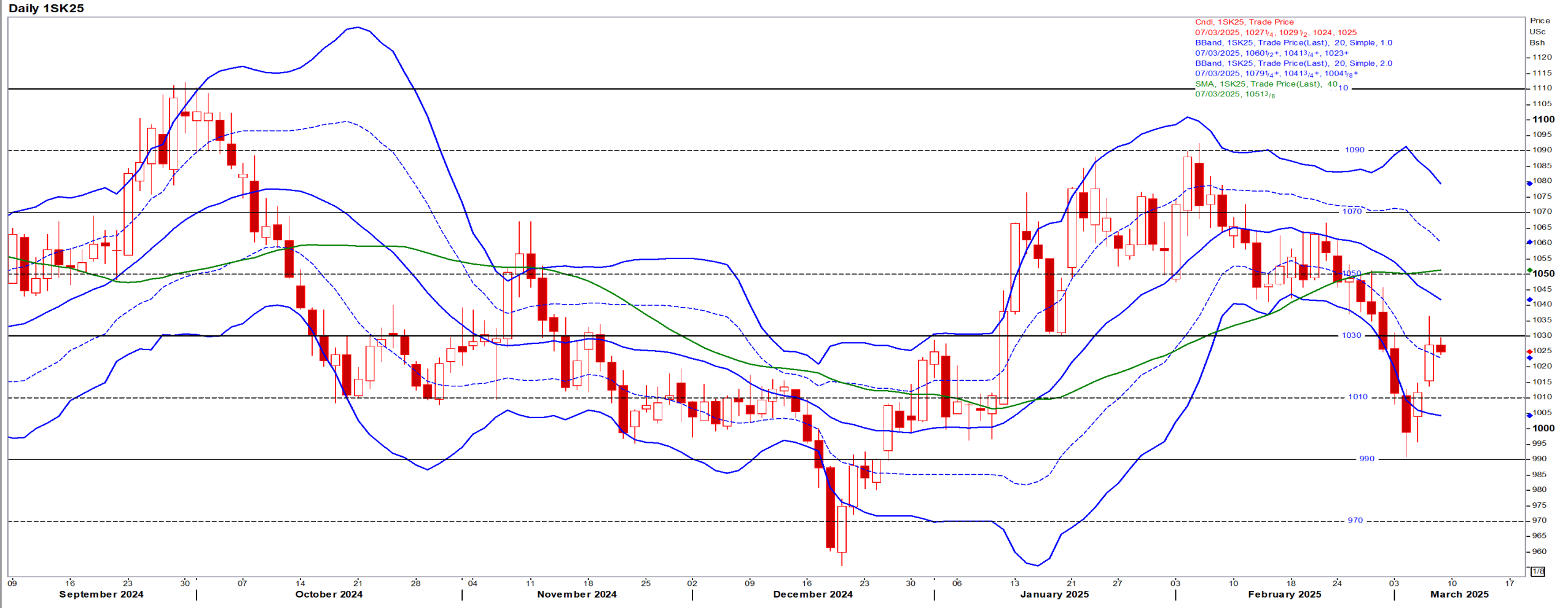
Jul25 Daily: Contract status bearish < R4160



USA Soya

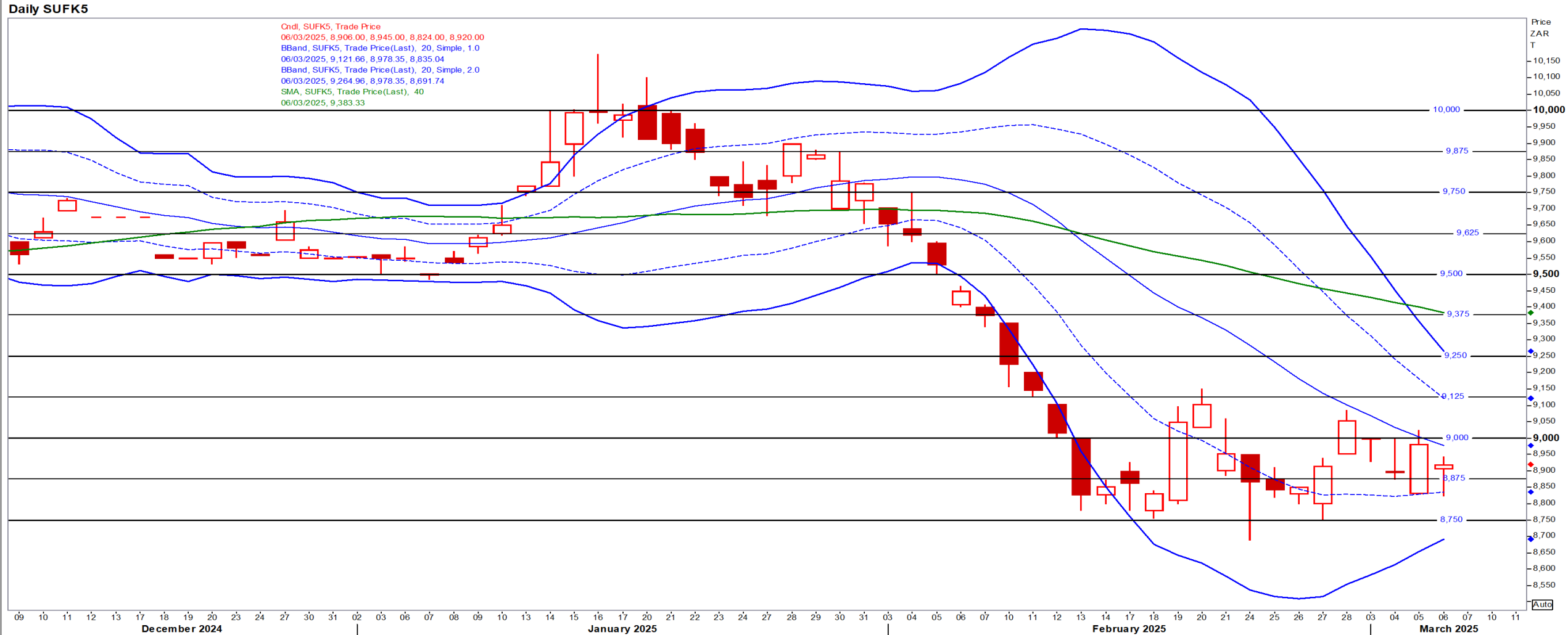
May25 Daily: Contract status bearish < \$10.30

- Beans gave up gains of the last two sessions although the suspension of US tariffs on Mexico/Canada limited the downside – Reuters



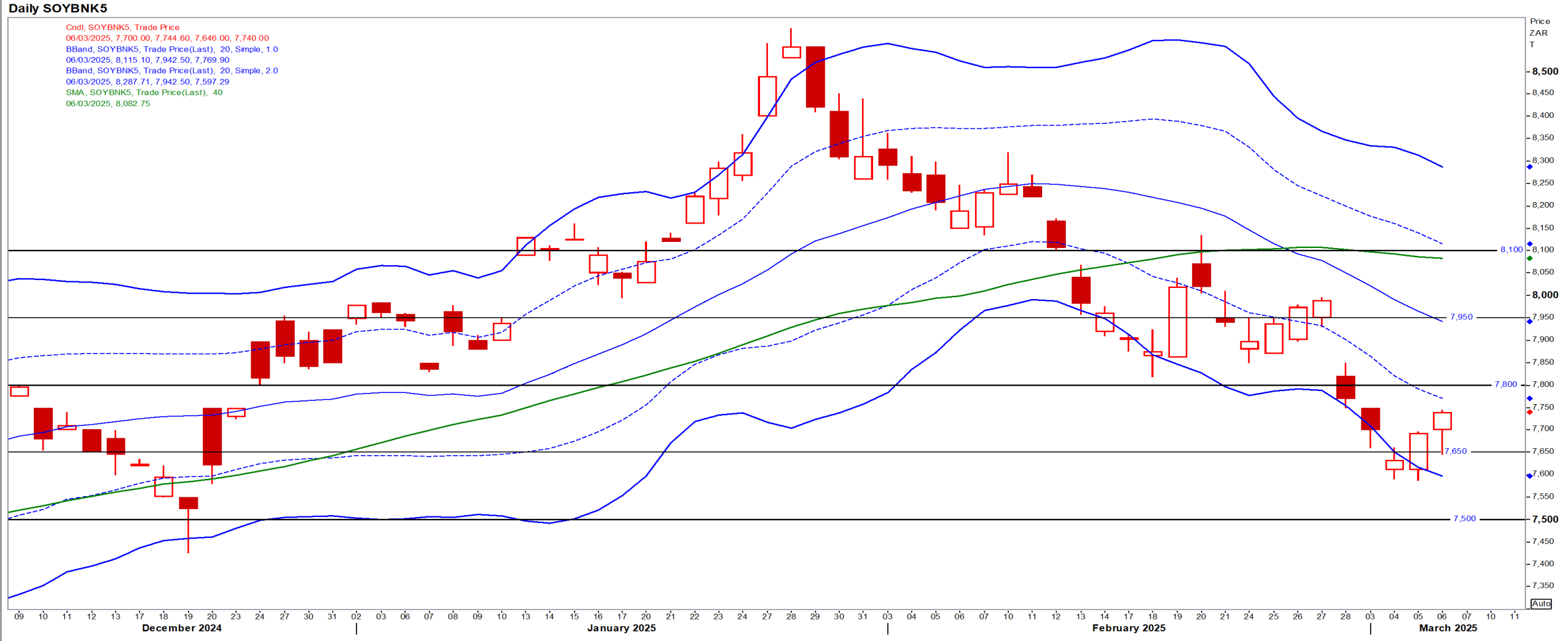
Suns

May25 Daily: Contract status very bearish < R9500



SA Soya

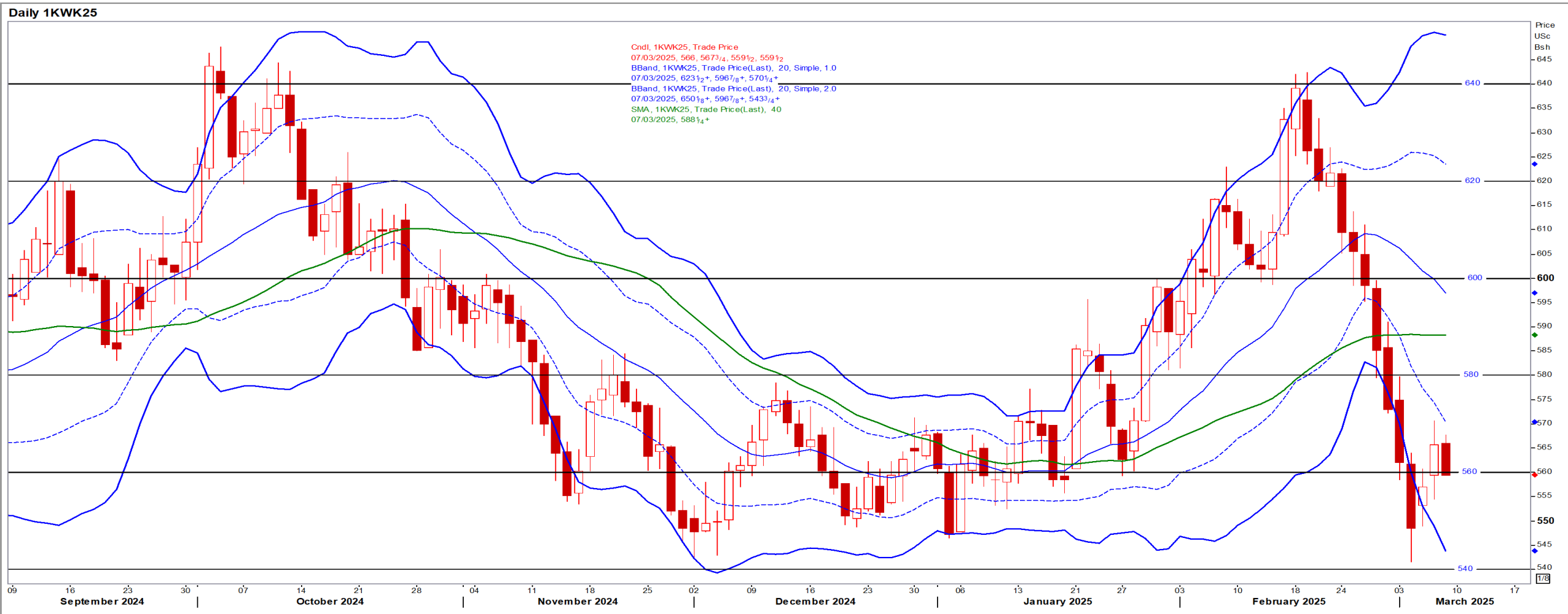
May25 Daily: Contract status very bearish < R7800



US KANSAS Wheat

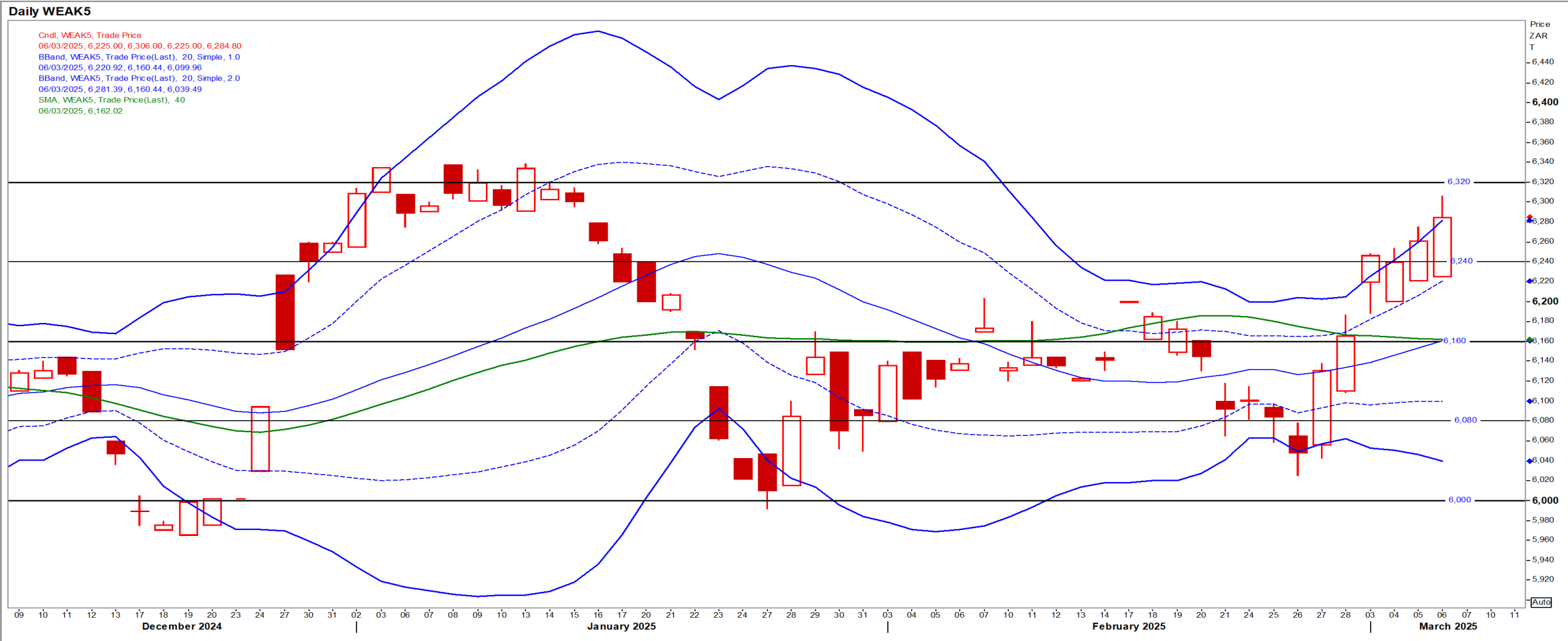
May25 Daily: Contract very bearish < \$6.00

- Wheat fell with additional pressure from expectations of a bumper harvest in top consumer China, apart from tariff uncertainty – Reuters



SA Wheat

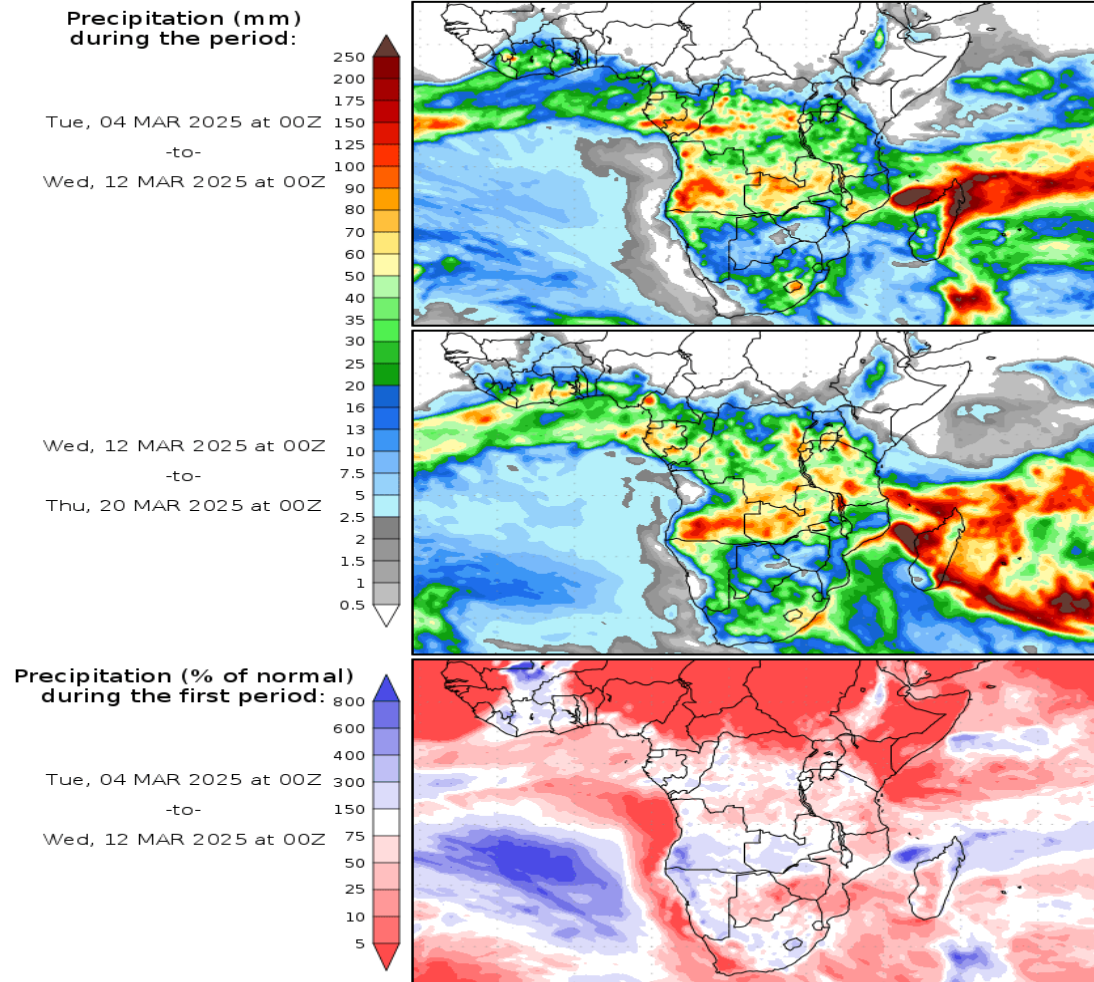
May25 Daily: Contract status very bullish > R6160



Weather

SA Medium-term Precipitation Forecasts

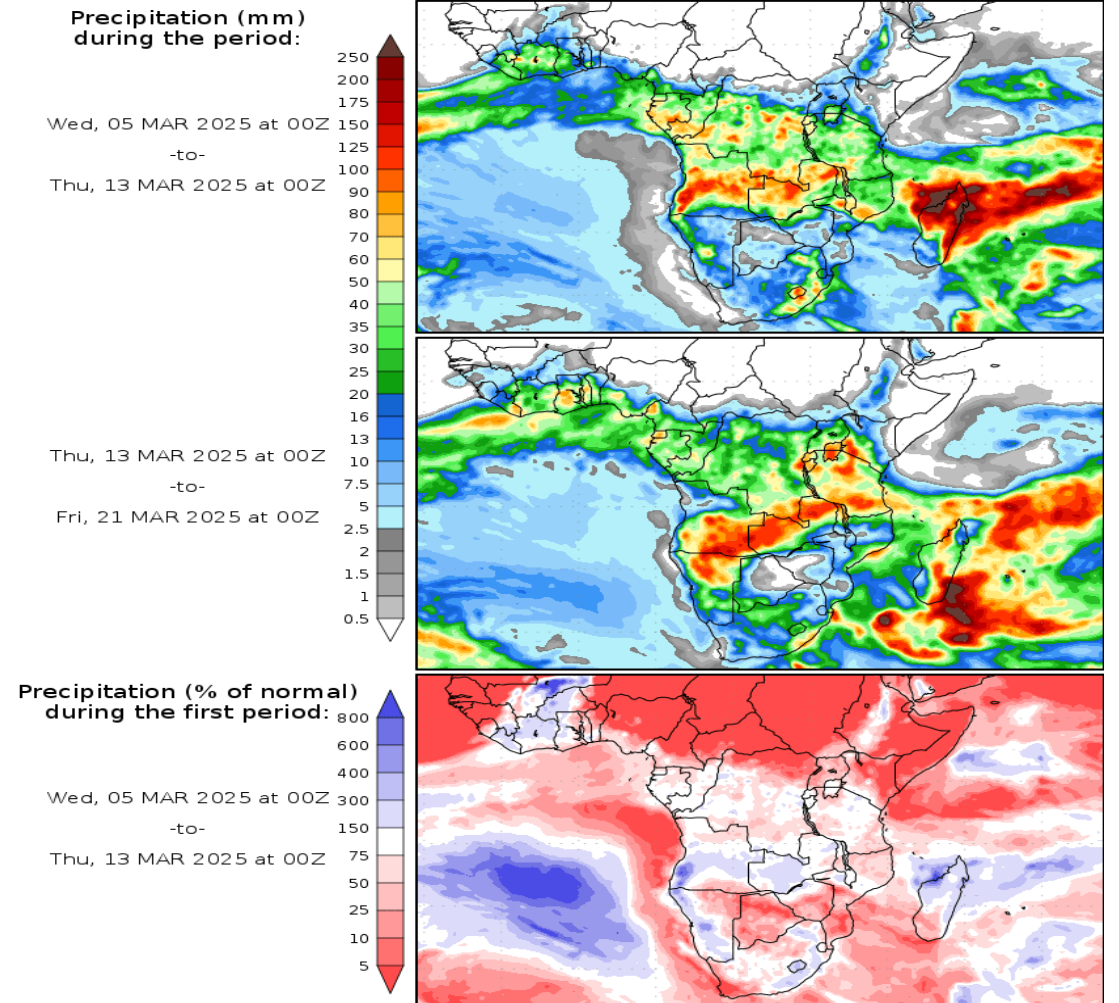
Precipitation Forecasts



Precipitation forecasts from the National Centers for Environmental Prediction.
Normal rainfall derived from Xie-Arkin (CMAP) Monthly Climatology for 1979-2003.
Forecast Initialization Time: 00Z04MAR2025

GrADS/COLA

Precipitation Forecasts



Precipitation forecasts from the National Centers for Environmental Prediction.
Normal rainfall derived from Xie-Arkin (CMAP) Monthly Climatology for 1979-2003.
Forecast Initialization Time: 00Z05MAR2025

GrADS/COLA