

Daily market
Report
13 Mar 25



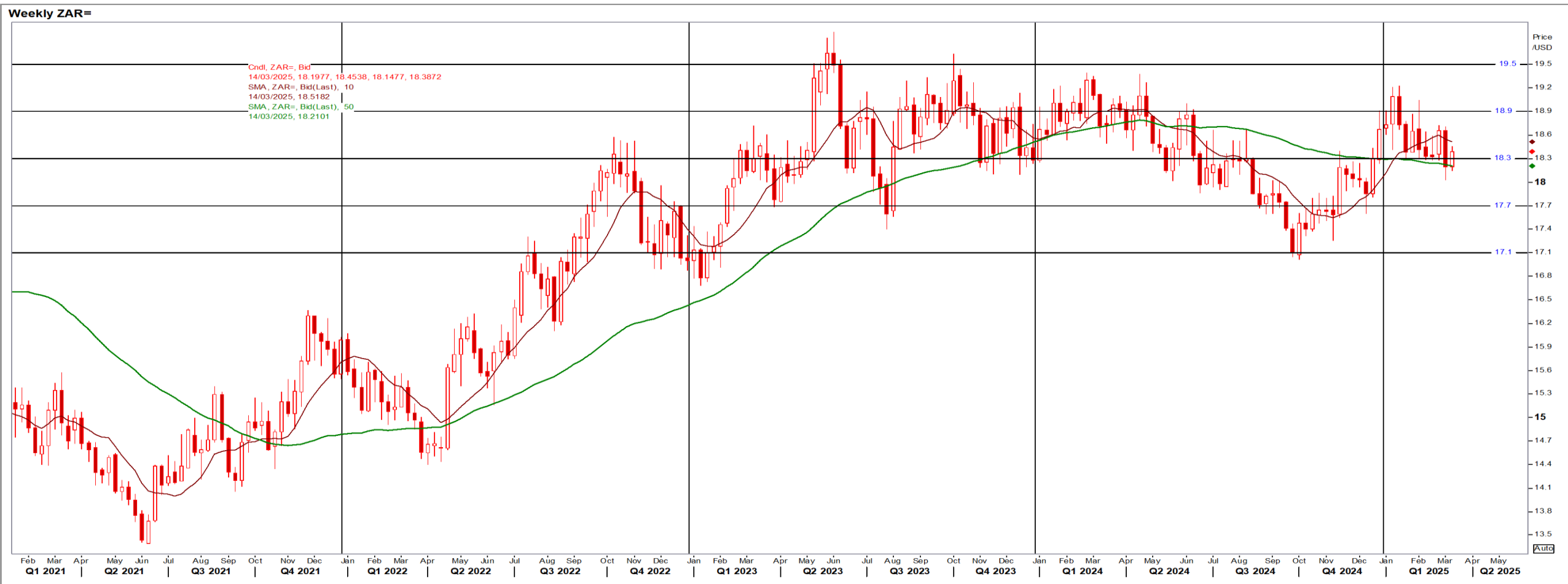
Parity Movements (implied price moves)

USA Movement (Overnight)	Cents	Currencies	13-Mar-25	07:58:47	
CORN CBOT (Jul25)	467.50	-3.00	R/\$ last	R 18.3591	-0.0196
SOY CBOT (May25)	1,005.00	1.50	Euro=	\$ 1.0884	-0.0029
W1 CBOT (May25)	556.25	5.75	GOLD	\$ 2,940	25.6400
W2 KCBT (May25)	577.75	11.25	BRENT	\$ 70.88	0.96
BlackSea Wheat (Near)	213.00	0.00			
Index Change					
Maize (Jul25)	3,379	R -25.31	Wheat CBOT (May25)	3,752	R 34.82
Soya (May25)	6,779	R 2.89	Wheat Kansas (May25)	3,897	R 71.81
BlackSea Wheat Near	3,910	R -4.17	RAND EFFECT ON WHEAT PARITY	3,822	-R 4.08

South African Rand (ZAR)

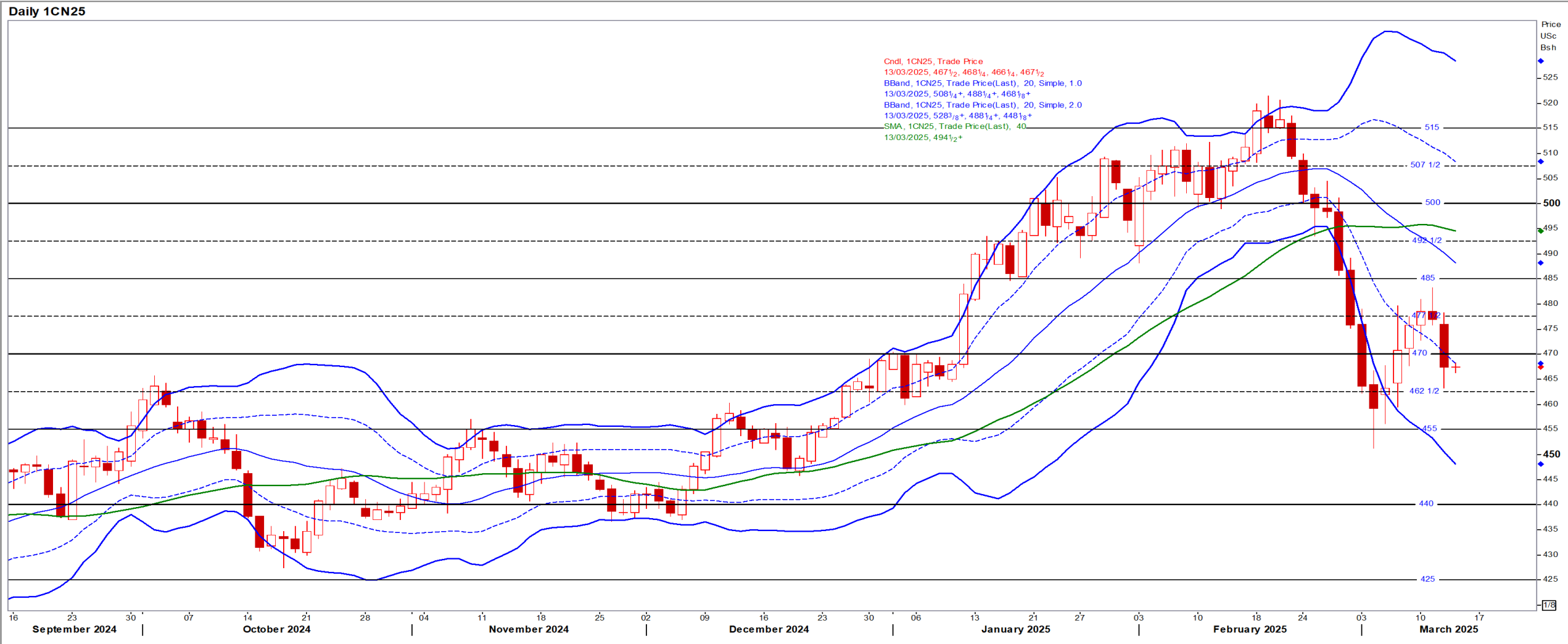
USD/ZAR Weekly: Bullish < R18.30

- ZAR fell on disagreements in the coalition despite the finance minister making VAT concessions in a revised budget that the DA does not support – Reuters
- While weaker than R18.30 the medium-term ZAR is bearish.



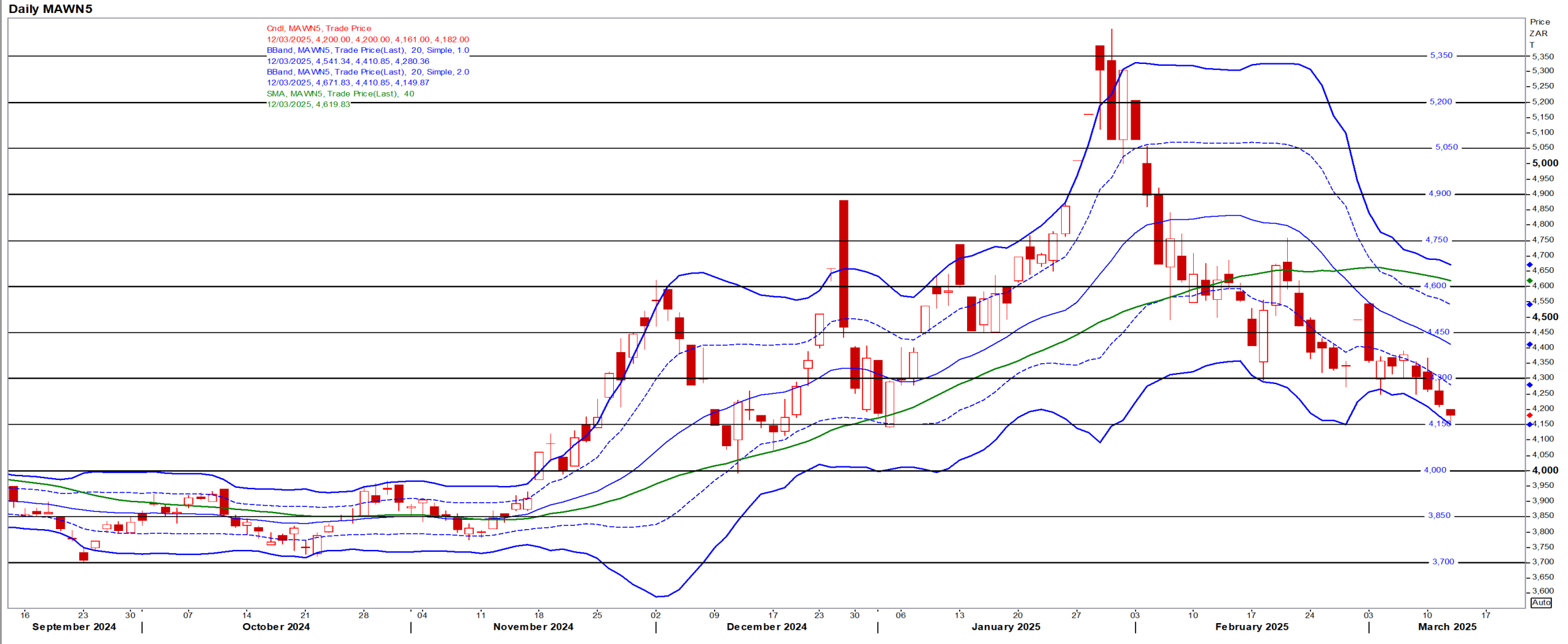
USA Corn

Jul25 Daily: Contract status bearish < \$4.70



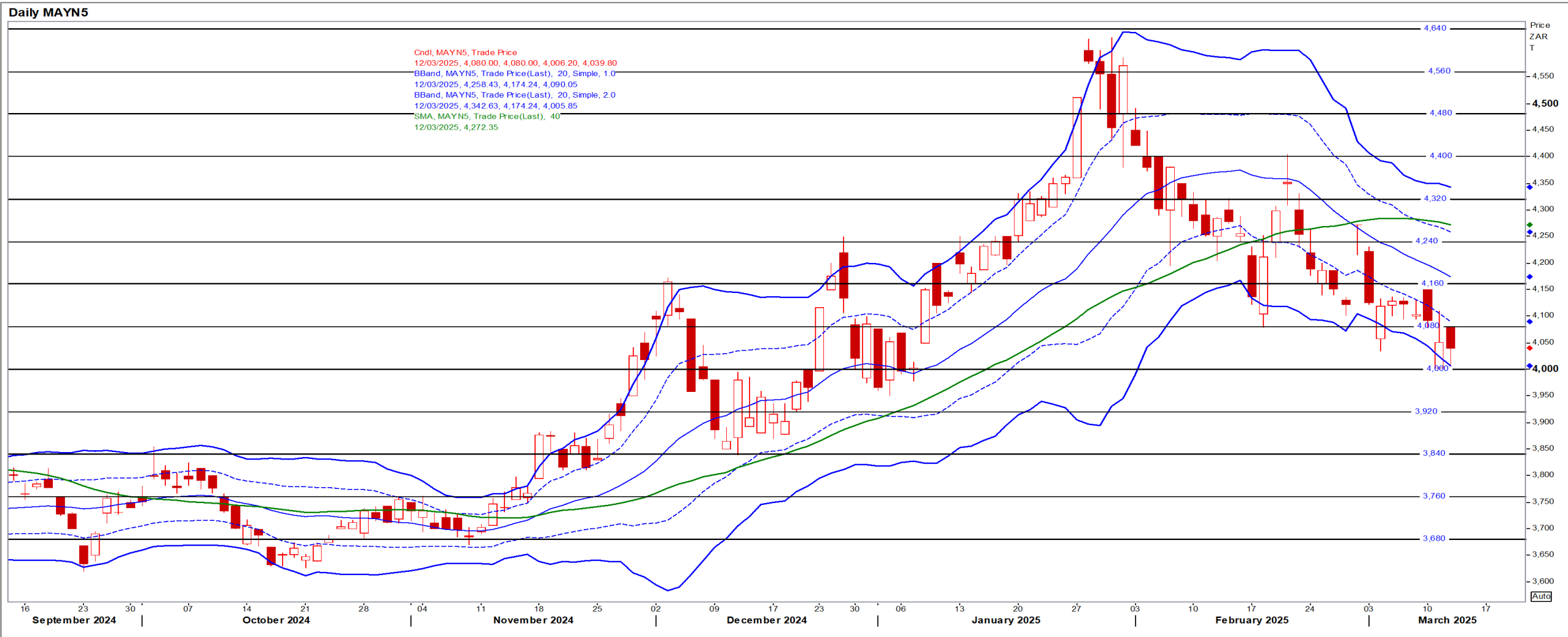
White Maize

Jul25 Daily: Contract status bearish < R4600



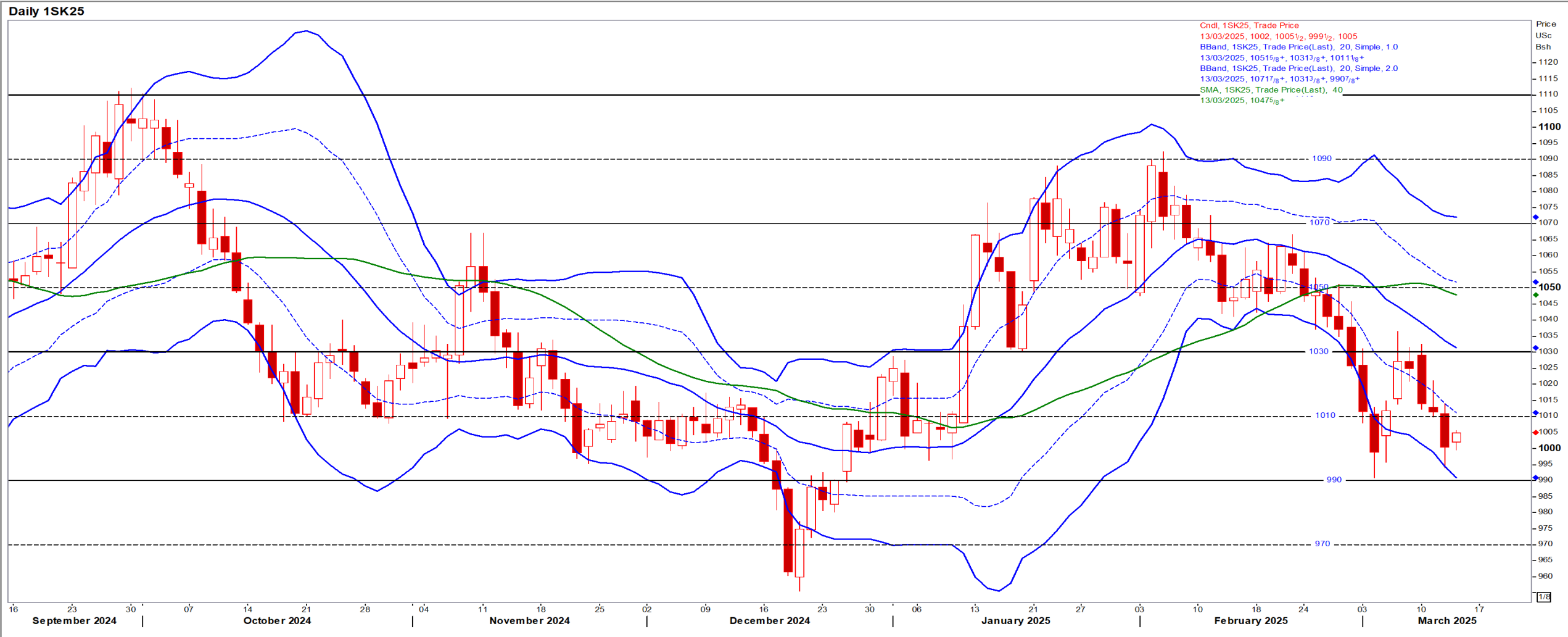
Yellow Maize

Jul25 Daily: Contract status bearish < R4160



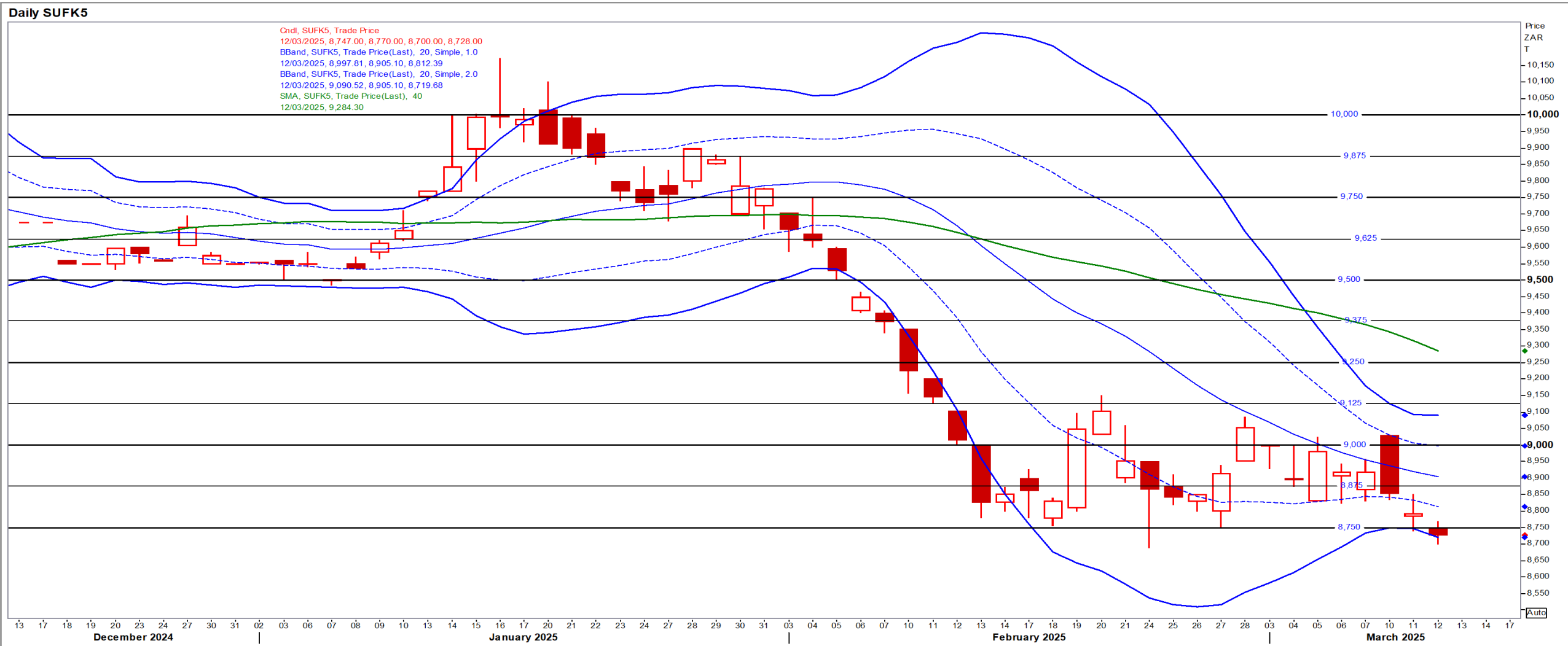
USA Soya

May25 Daily: Contract status bearish < \$10.30



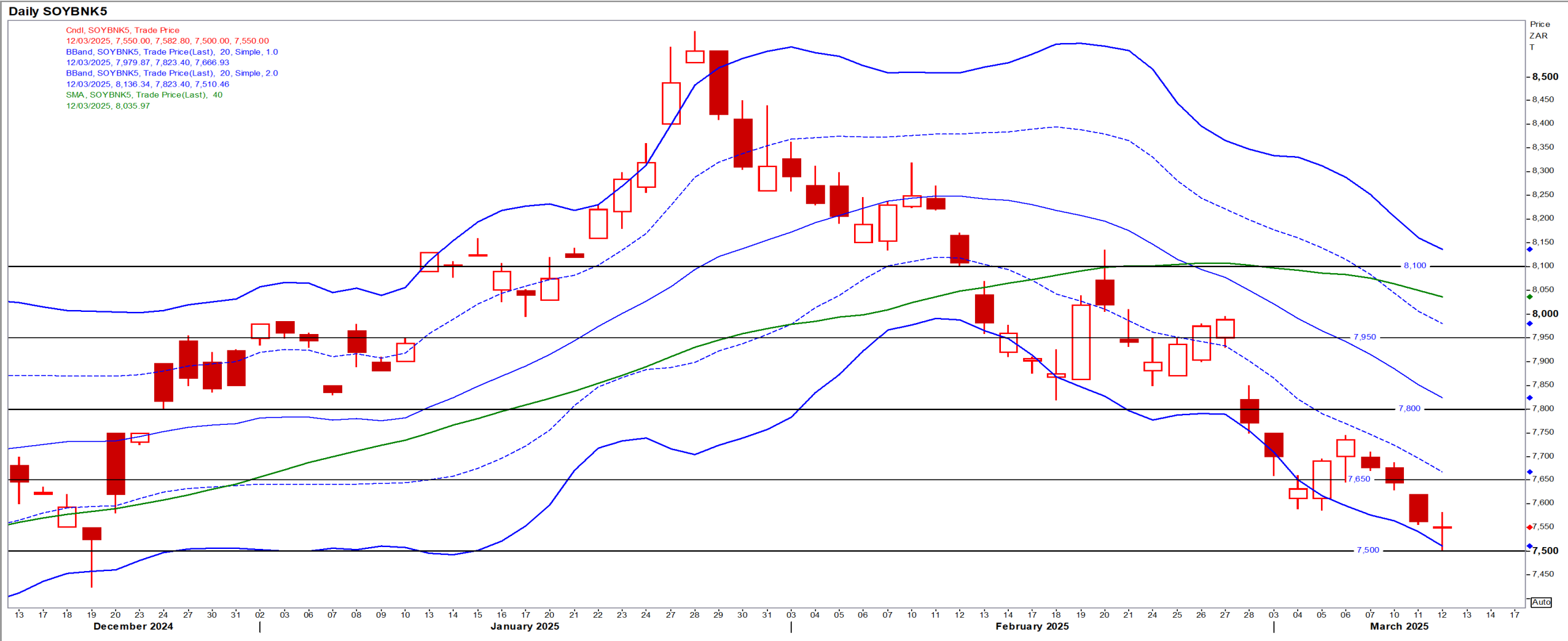
Suns

May25 Daily: Contract status very bearish < R9500



SA Soya

May25 Daily: Contract status very bearish < R7800



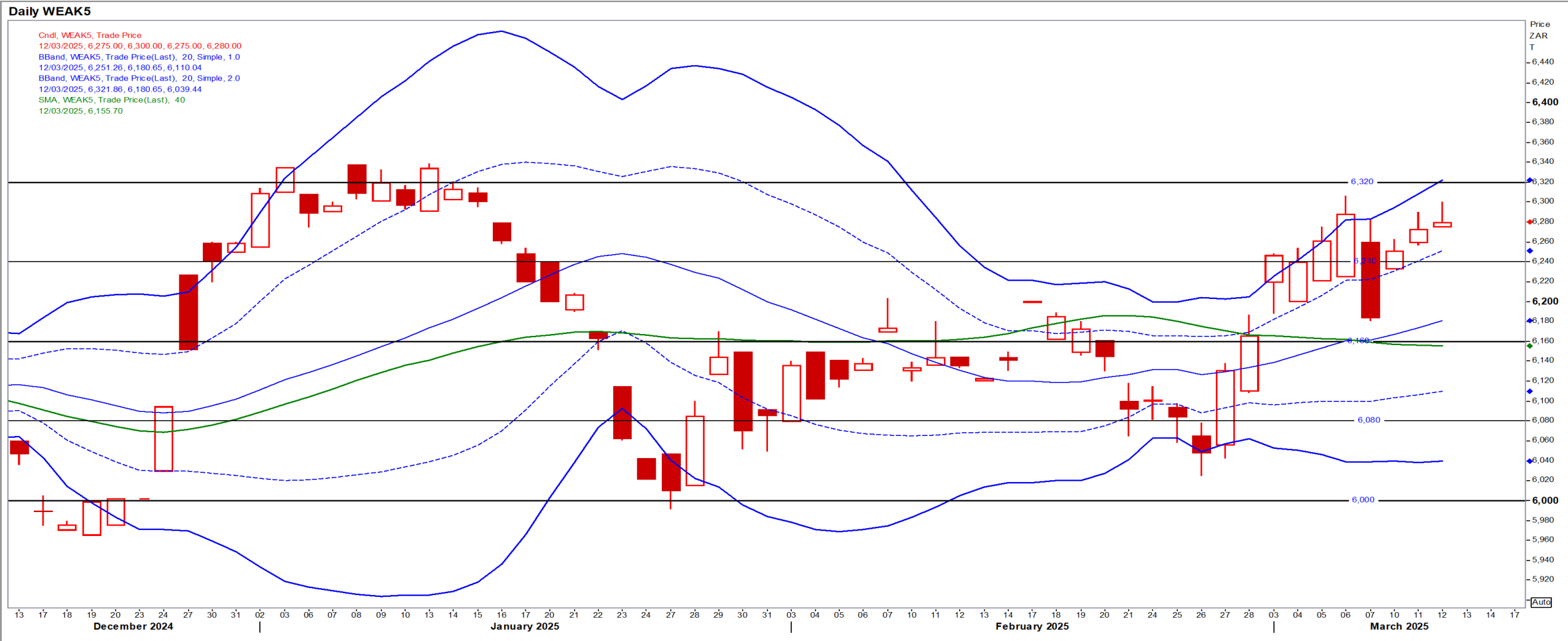
US KANSAS Wheat

May25 Daily: Contract very bearish < \$6.00



SA Wheat

May25 Daily: Contract status very bullish > R6160



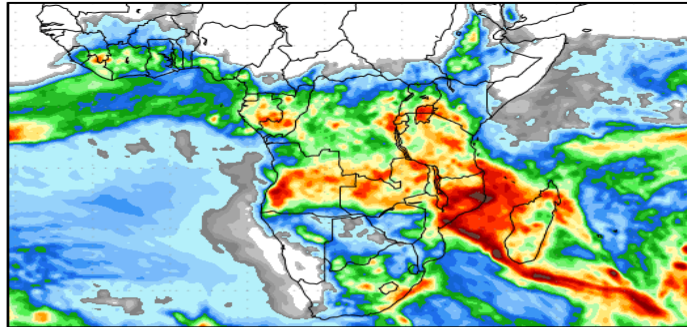
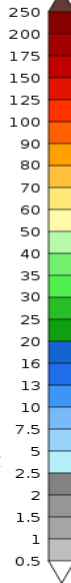
Weather

SA Medium-term Precipitation Forecasts

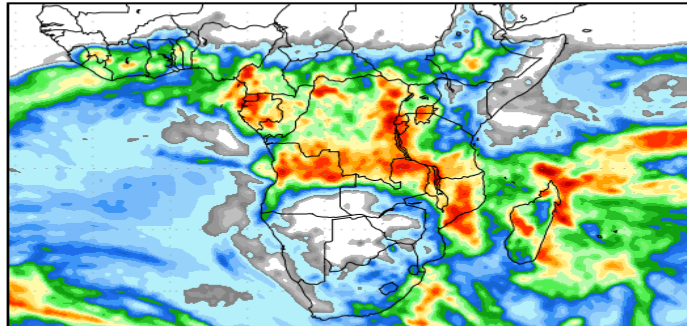
Precipitation Forecasts

Precipitation (mm)
during the period:

Mon, 10 MAR 2025 at 00Z
-to-
Tue, 18 MAR 2025 at 00Z

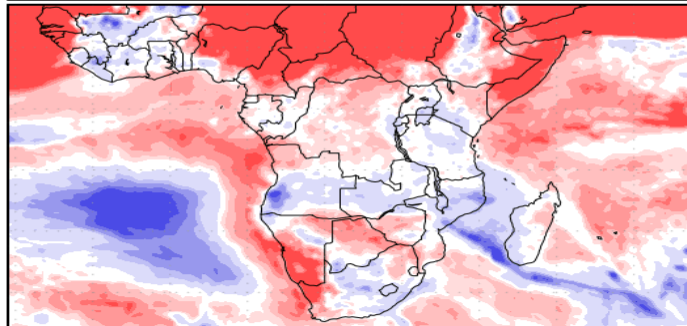
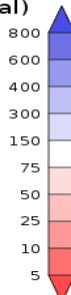


Tue, 18 MAR 2025 at 00Z
-to-
Wed, 26 MAR 2025 at 00Z



Precipitation (% of normal)
during the first period:

Mon, 10 MAR 2025 at 00Z
-to-
Tue, 18 MAR 2025 at 00Z



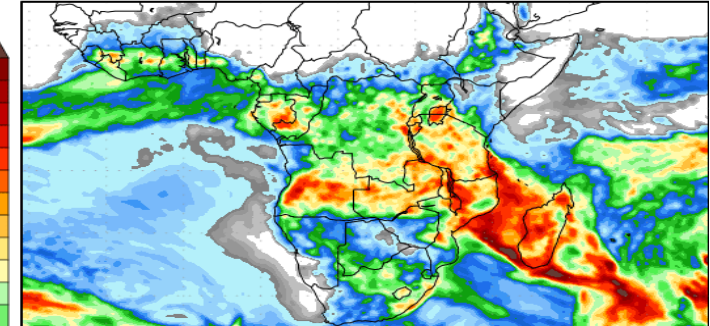
Precipitation forecasts from the National Centers for Environmental Prediction. Normal rainfall derived from Xie-Arkin (CMAP) Monthly Climatology for 1979-2003. Forecast Initialization Time: 00Z10MAR2025

GrADS/COLA

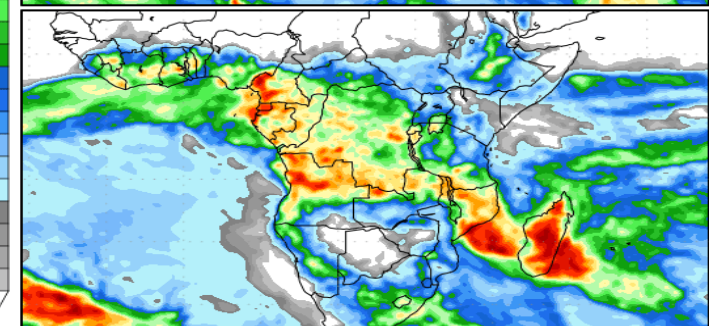
Precipitation Forecasts

Precipitation (mm)
during the period:

Tue, 11 MAR 2025 at 00Z
-to-
Wed, 19 MAR 2025 at 00Z

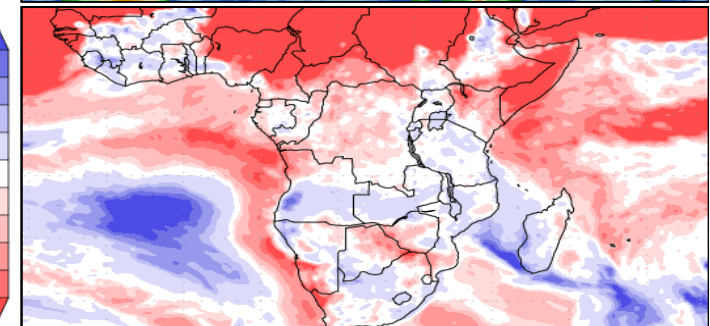
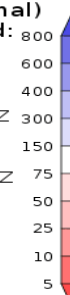


Wed, 19 MAR 2025 at 00Z
-to-
Thu, 27 MAR 2025 at 00Z



Precipitation (% of normal)
during the first period:

Tue, 11 MAR 2025 at 00Z
-to-
Wed, 19 MAR 2025 at 00Z



Precipitation forecasts from the National Centers for Environmental Prediction. Normal rainfall derived from Xie-Arkin (CMAP) Monthly Climatology for 1979-2003. Forecast Initialization Time: 00Z11MAR2025

GrADS/COLA