

Daily market
Report
14 Mar 25



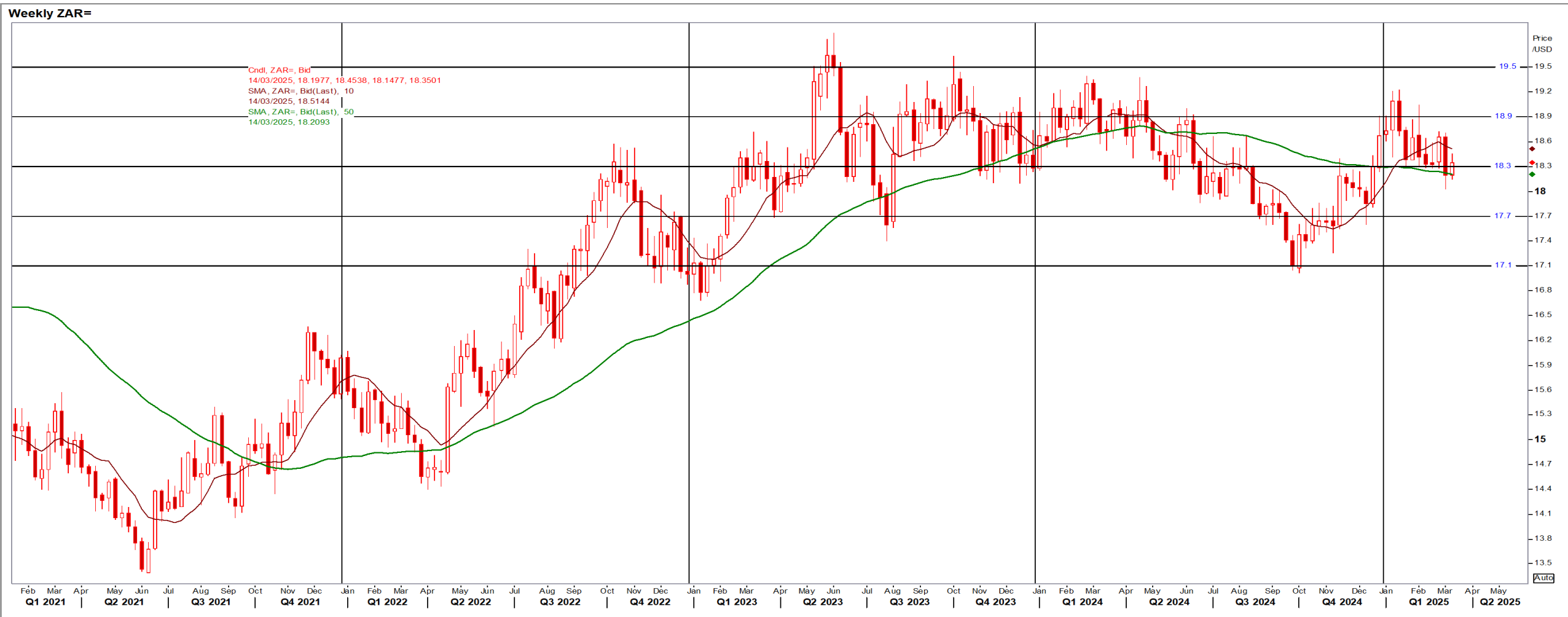
Parity Movements (implied price moves)

USA Movement (Overnight)	Cents	Currencies	14-Mar-25	07:59:27	
CORN CBOT (Jul25)	470.00	-1.00	R/\$ last	R 18.2941	-0.0806
SOY CBOT (May25)	1,012.50	4.75	Euro=	\$ 1.0850	-0.0029
W1 CBOT (May25)	563.25	6.00	GOLD	\$ 2,986	37.7200
W2 KCBT (May25)	591.25	13.25	BRENT	\$ 70.32	-0.34
BlackSea Wheat (Near)	215.00	2.00			
Index Change					
Maize (Jul25)	3,385	R -22.15	Wheat CBOT (May25)	3,786	R 23.83
Soya (May25)	6,805	R 2.08	Wheat Kansas (May25)	3,974	R 71.95
BlackSea Wheat Near	3,933	R 19.42	RAND EFFECT ON WHEAT PARITY	3,885	-R 17.12

South African Rand (ZAR)

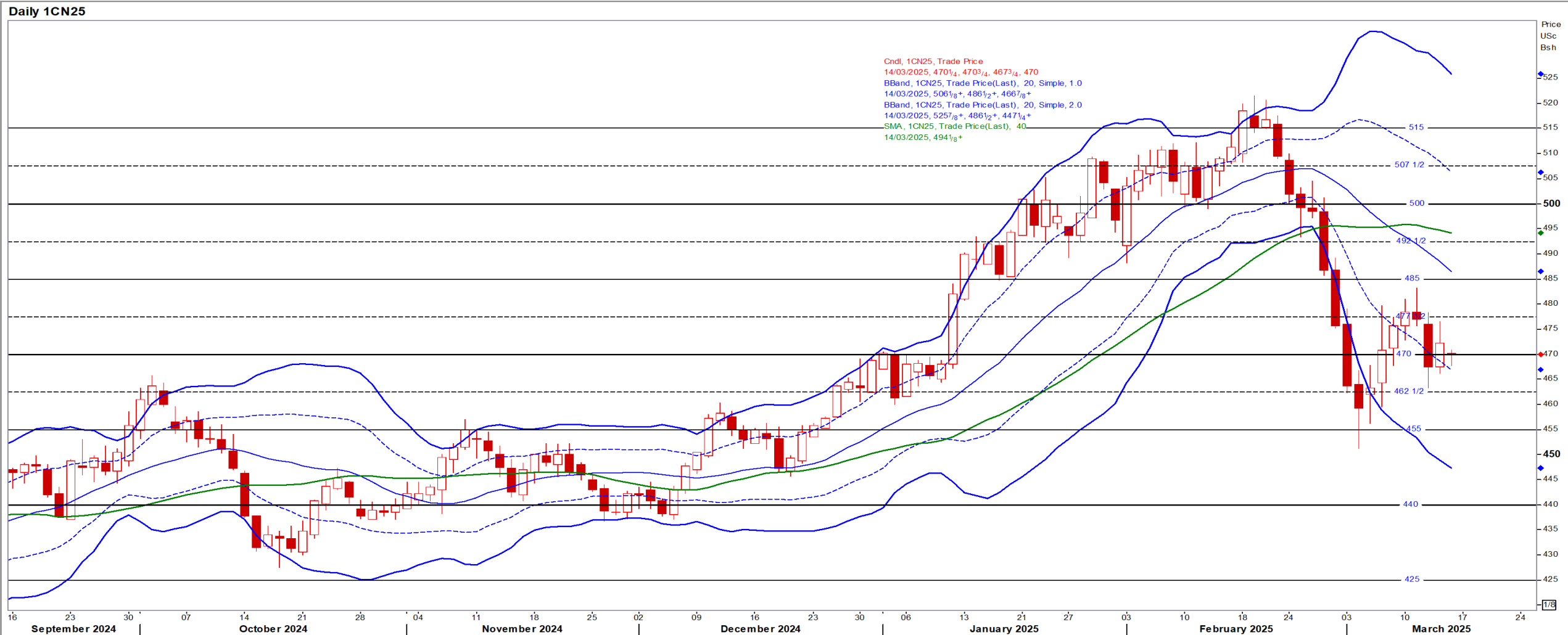
USD/ZAR Weekly: Bearish > R18.30

- While weaker than R18.30 the medium-term ZAR is bearish.



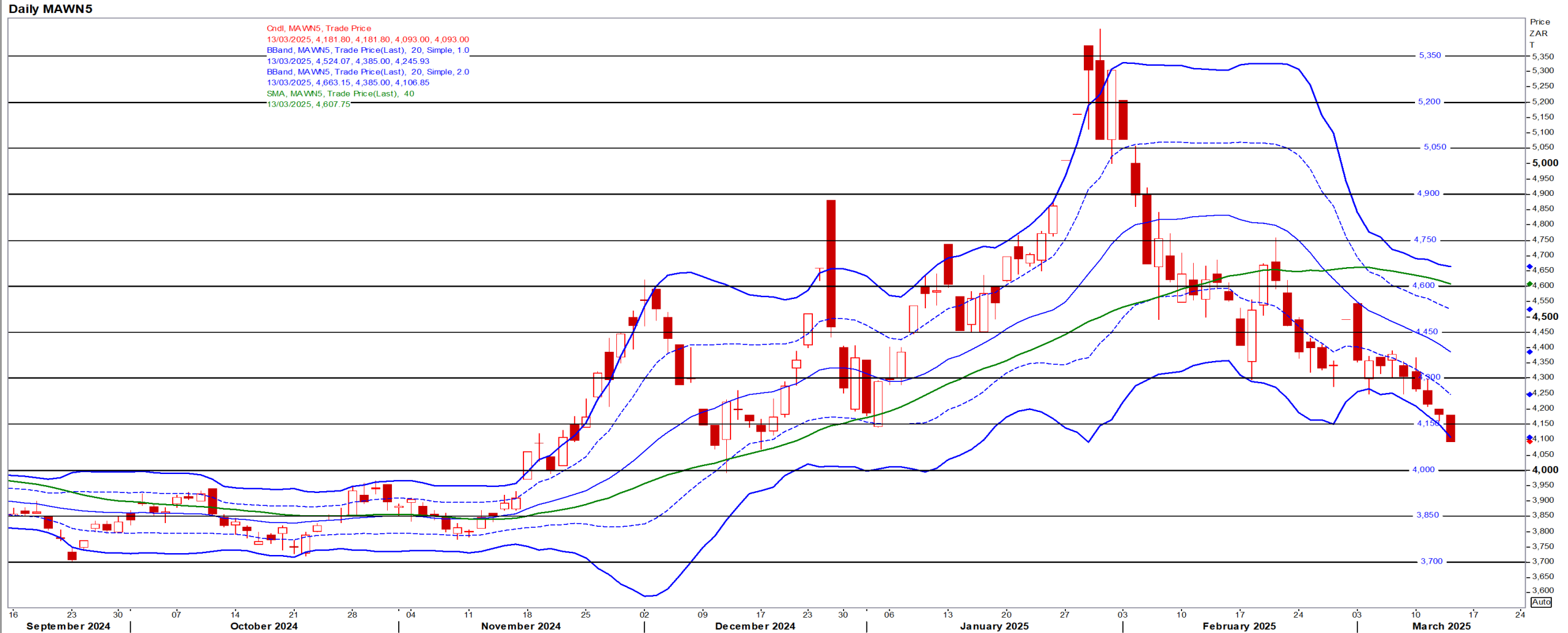
USA Corn

Jul25 Daily: Contract status bullish > \$4.70



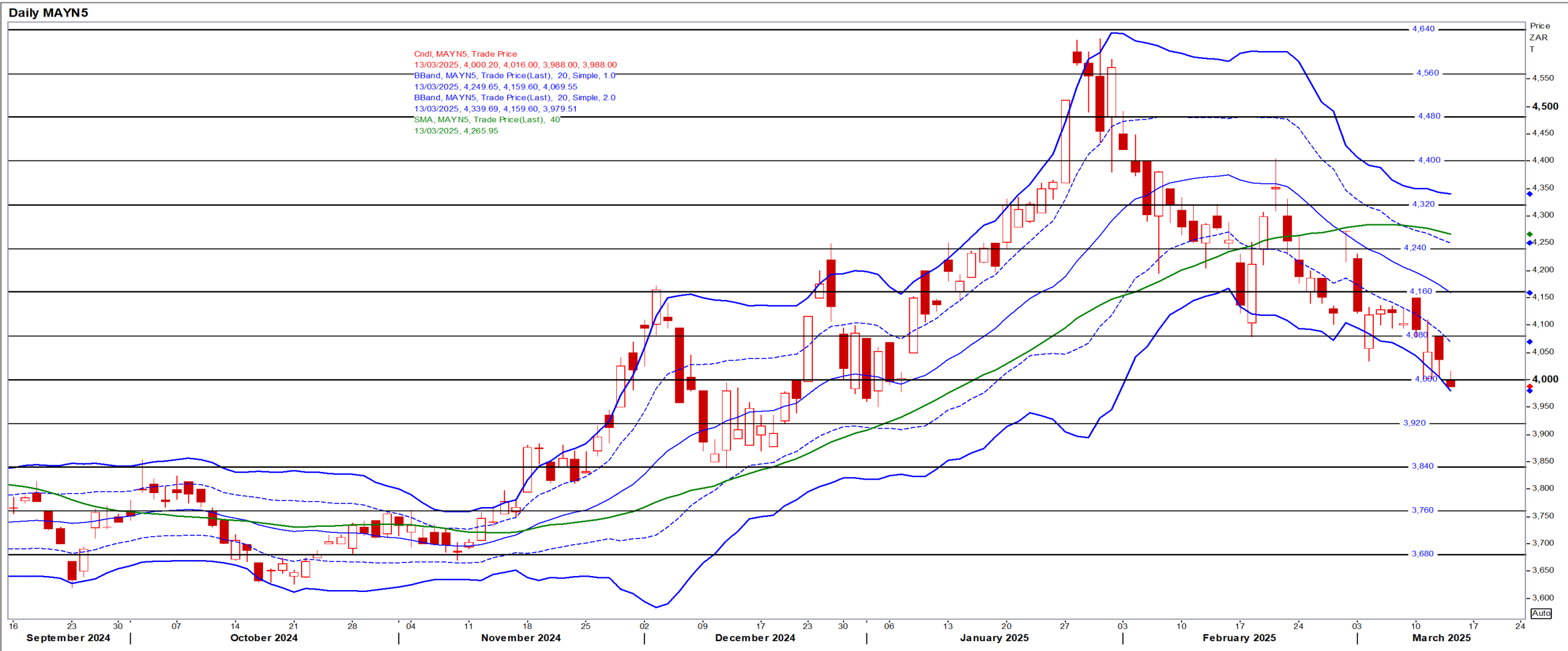
White Maize

Jul25 Daily: Contract status bearish < R4600



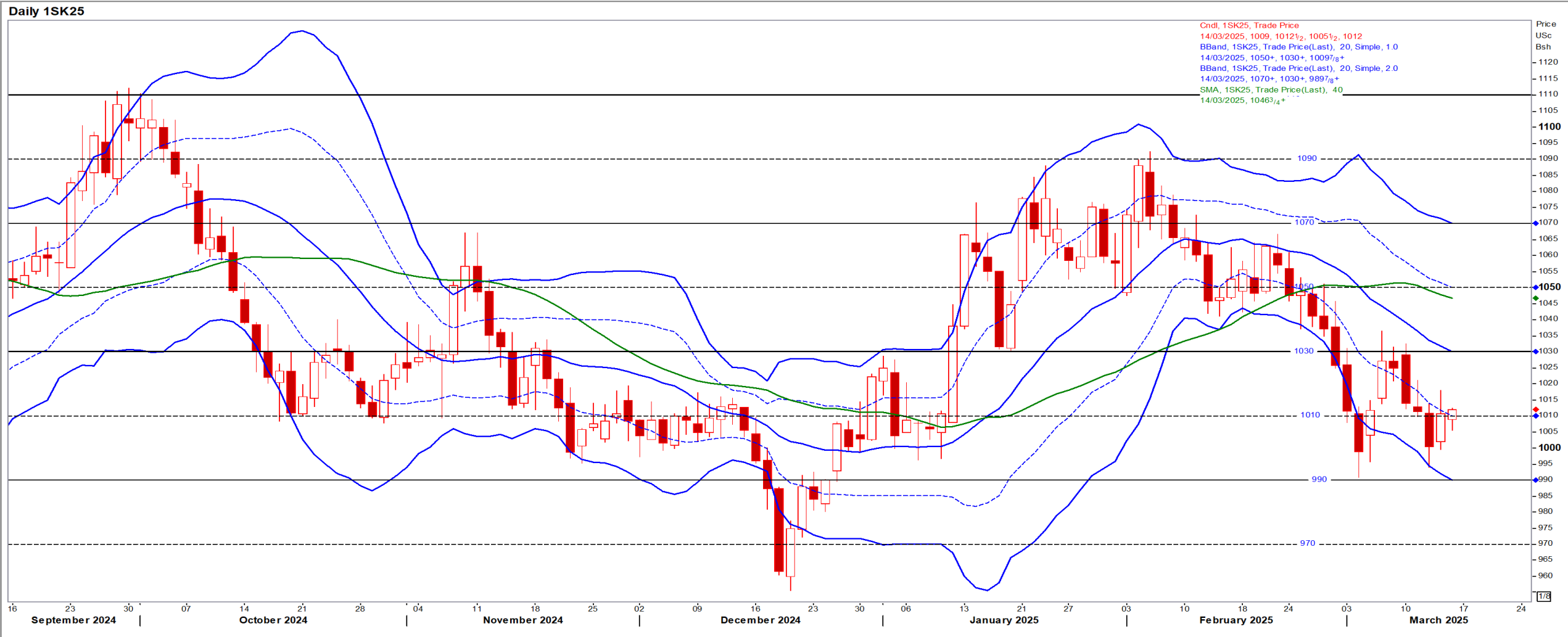
Yellow Maize

Jul25 Daily: Contract status bearish < R4160



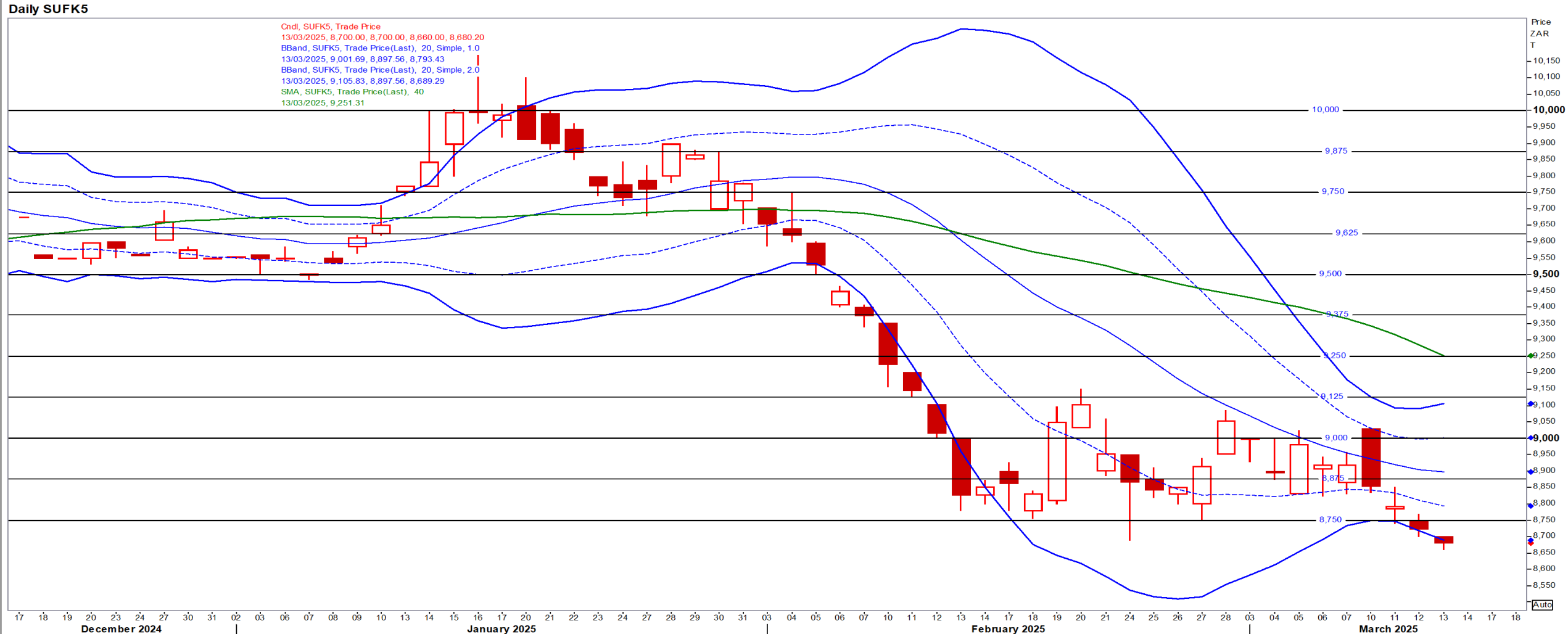
USA Soya

May25 Daily: Contract status bearish < \$10.30



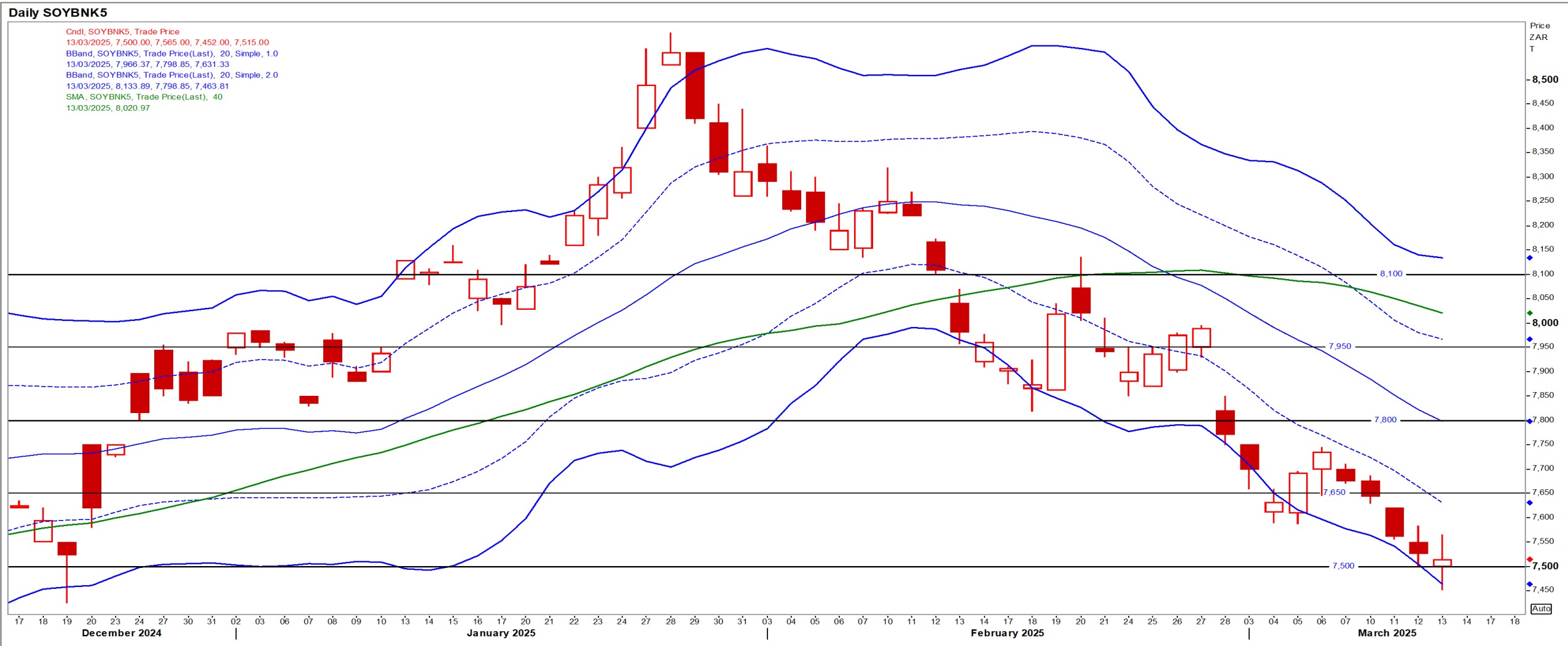
Suns

May25 Daily: Contract status very bearish < R9500



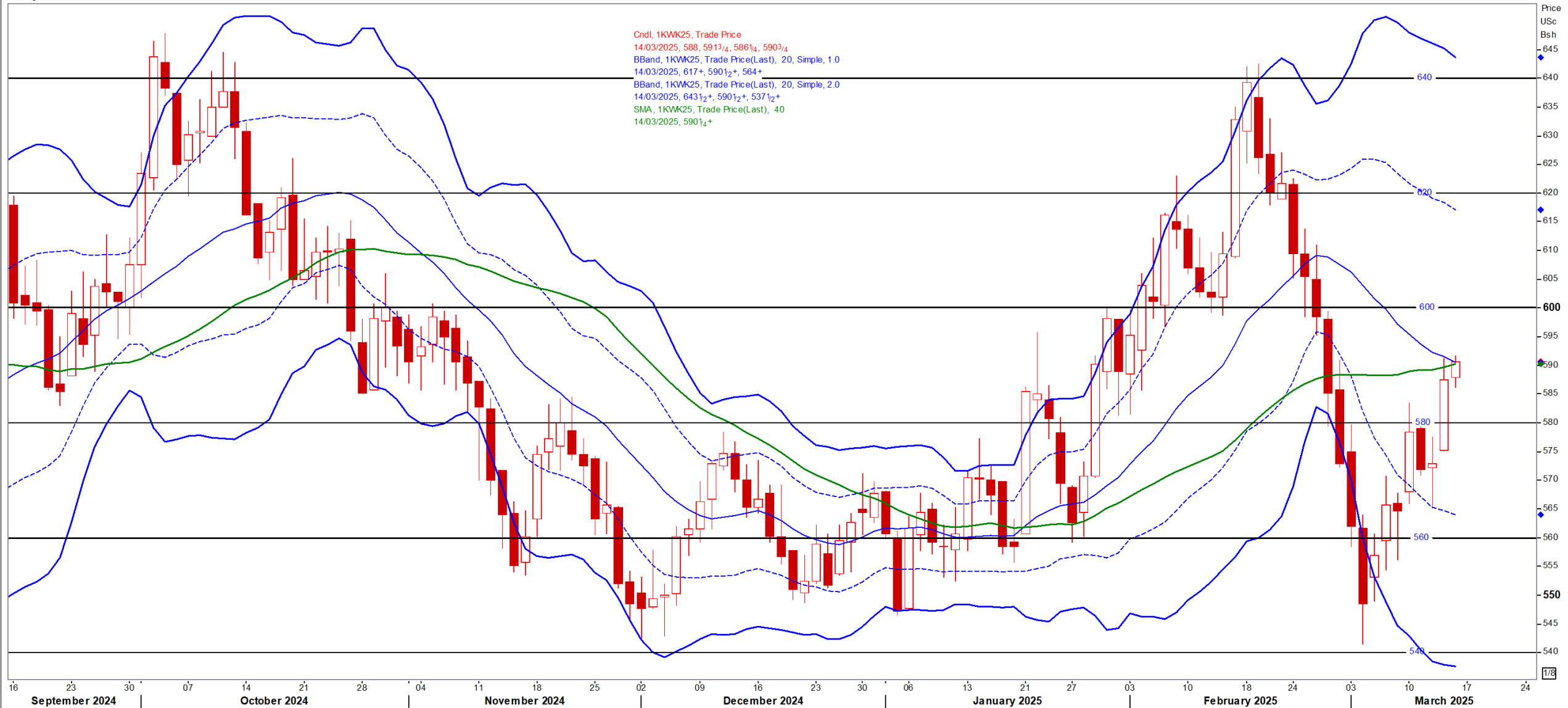
SA Soya

May25 Daily: Contract status very bearish < R7800



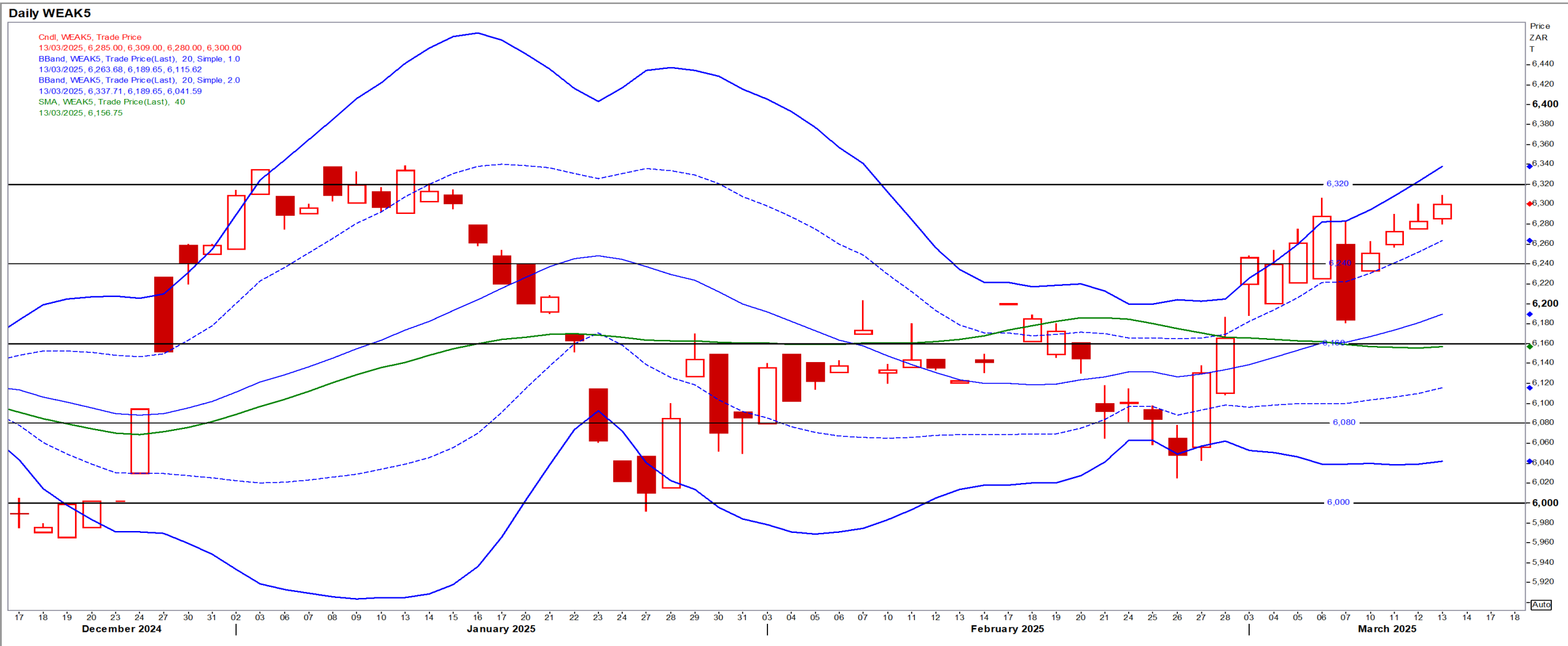
US KANSAS Wheat

Daily 1KWK25



SA Wheat

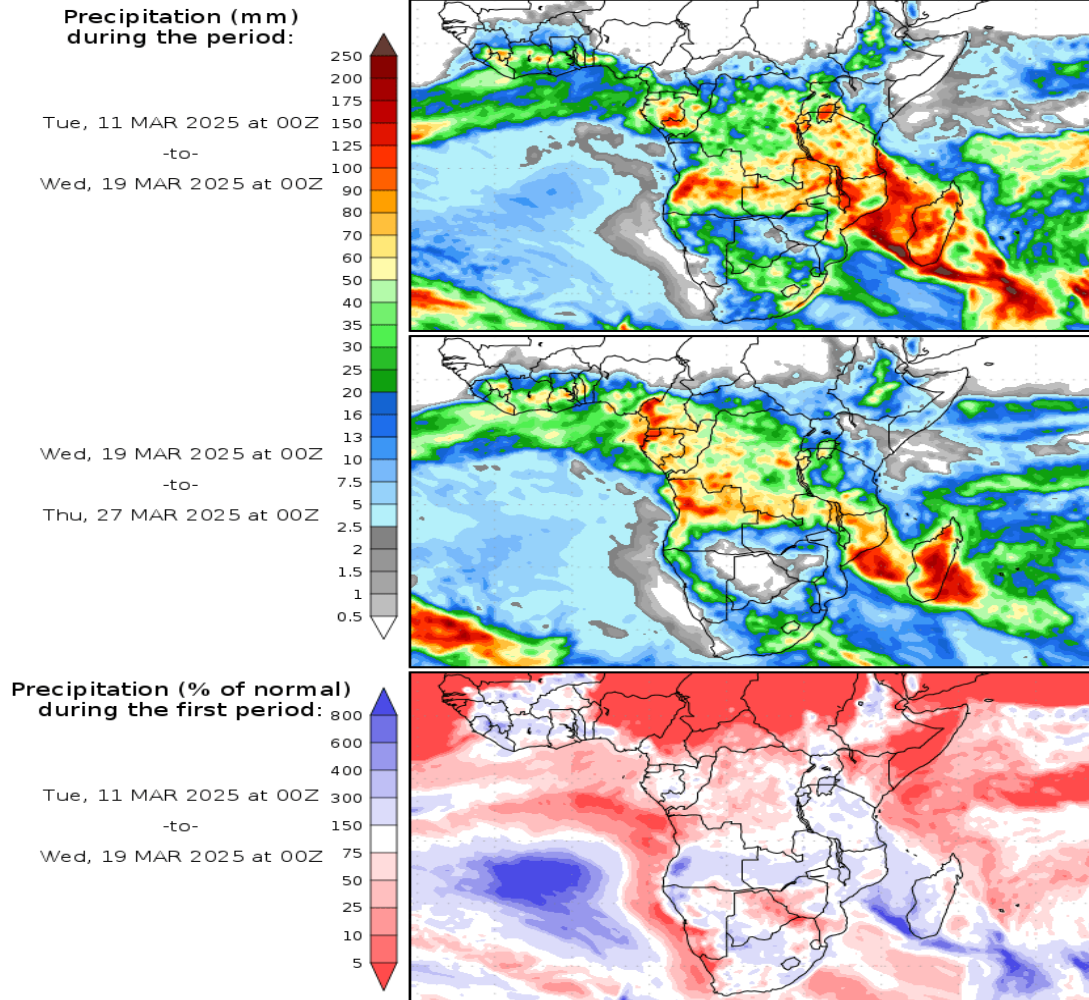
May25 Daily: Contract status very bullish > R6160



Weather

SA Medium-term Precipitation Forecasts

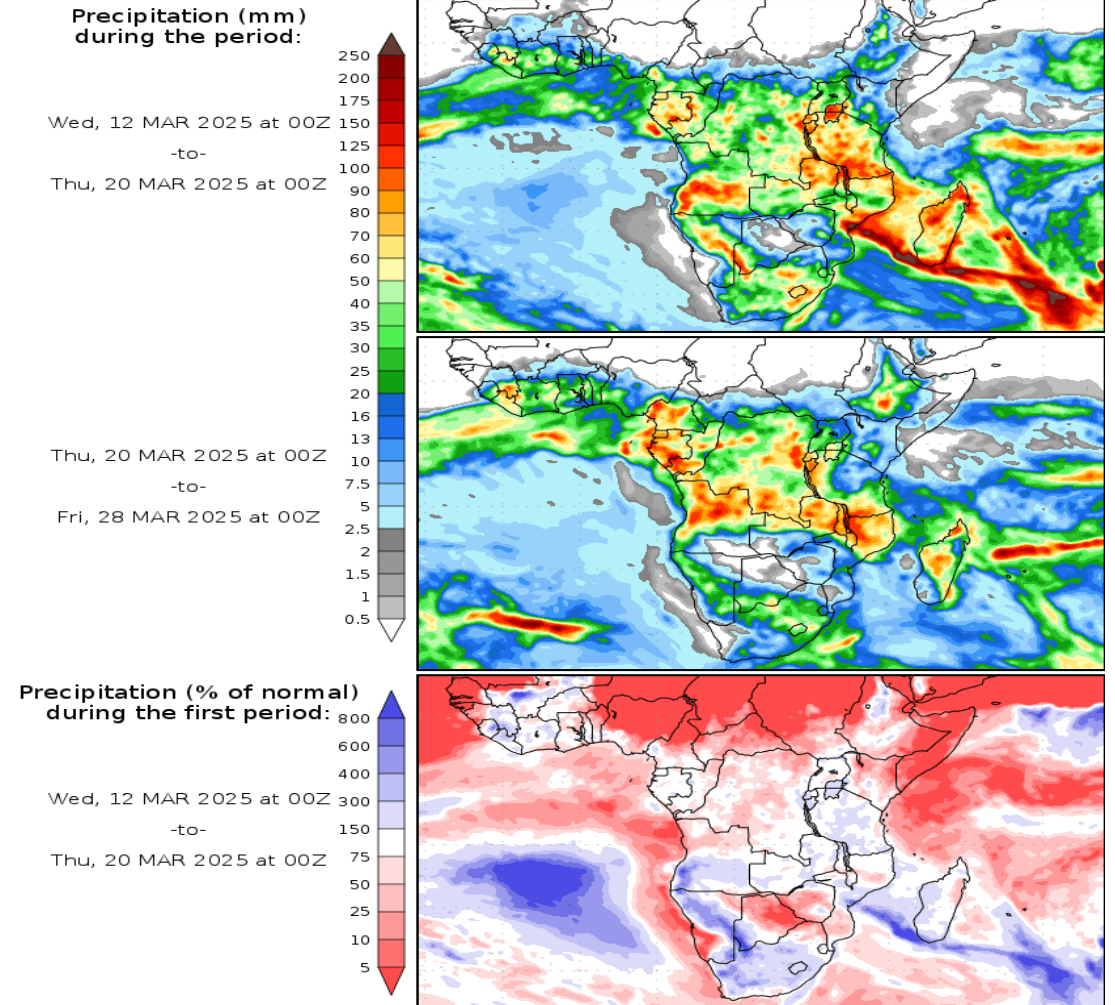
Precipitation Forecasts



Precipitation forecasts from the National Centers for Environmental Prediction.
Normal rainfall derived from Xie-Arkin (CMAP) Monthly Climatology for 1979-2003.
Forecast Initialization Time: 00Z11MAR2025

_ GrADS/COLA

Precipitation Forecasts



Precipitation forecasts from the National Centers for Environmental Prediction.
Normal rainfall derived from Xie-Arkin (CMAP) Monthly Climatology for 1979-2003.
Forecast Initialization Time: 00Z12MAR2025

GrADS/COLA