

Daily market  
Report  
18 Mar 25

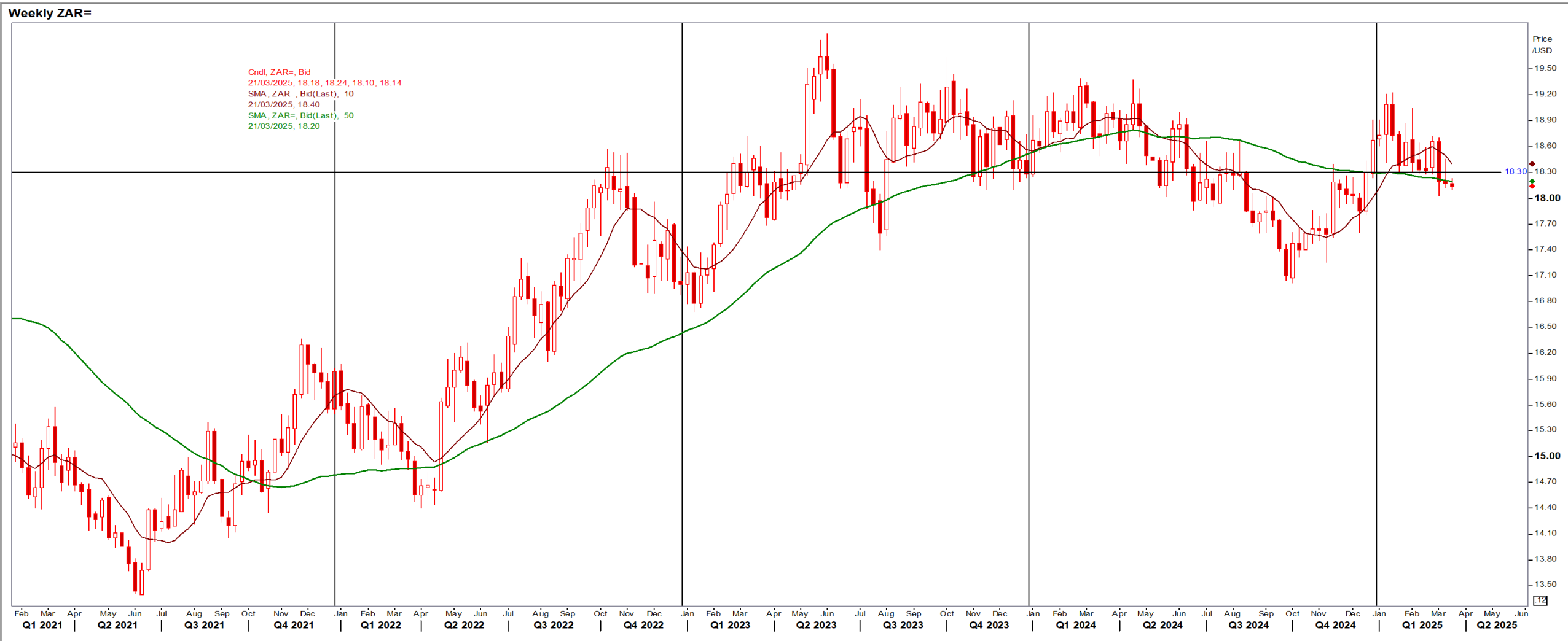


# Parity Movements (implied price moves)

USA Movement (Overnight)	Cents	Currencies	18-Mar-25	07:59:07
<b>CORN CBOT (Jul25)</b>	468.00	-3.75	R/\$ last	R 18.0984 -0.0488
<b>SOY CBOT (May25)</b>	1,014.75	-2.00	Euro=	\$ 1.0907 0.0009
<b>W1 CBOT (May25)</b>	569.75	0.25	<b>GOLD</b>	\$ 3,012 15.9300
<b>W2 KCBT (May25)</b>	608.75	5.25	<b>BRENT</b>	\$ 71.41 0.20
<b>BlackSea Wheat (Near)</b>	215.00	0.00		
<b>Index Change</b>				
<b>Maize (Jul25)</b>	3,335	R -35.78	<b>Wheat CBOT (May25)</b>	3,789 R -8.55
<b>Soya (May25)</b>	6,747	R -31.53	<b>Wheat Kansas (May25)</b>	4,048 R 24.09
<b>BlackSea Wheat Near</b>	3,891	R -10.49	<b>RAND EFFECT ON WHEAT PARITY</b>	4,013 -R 10.82

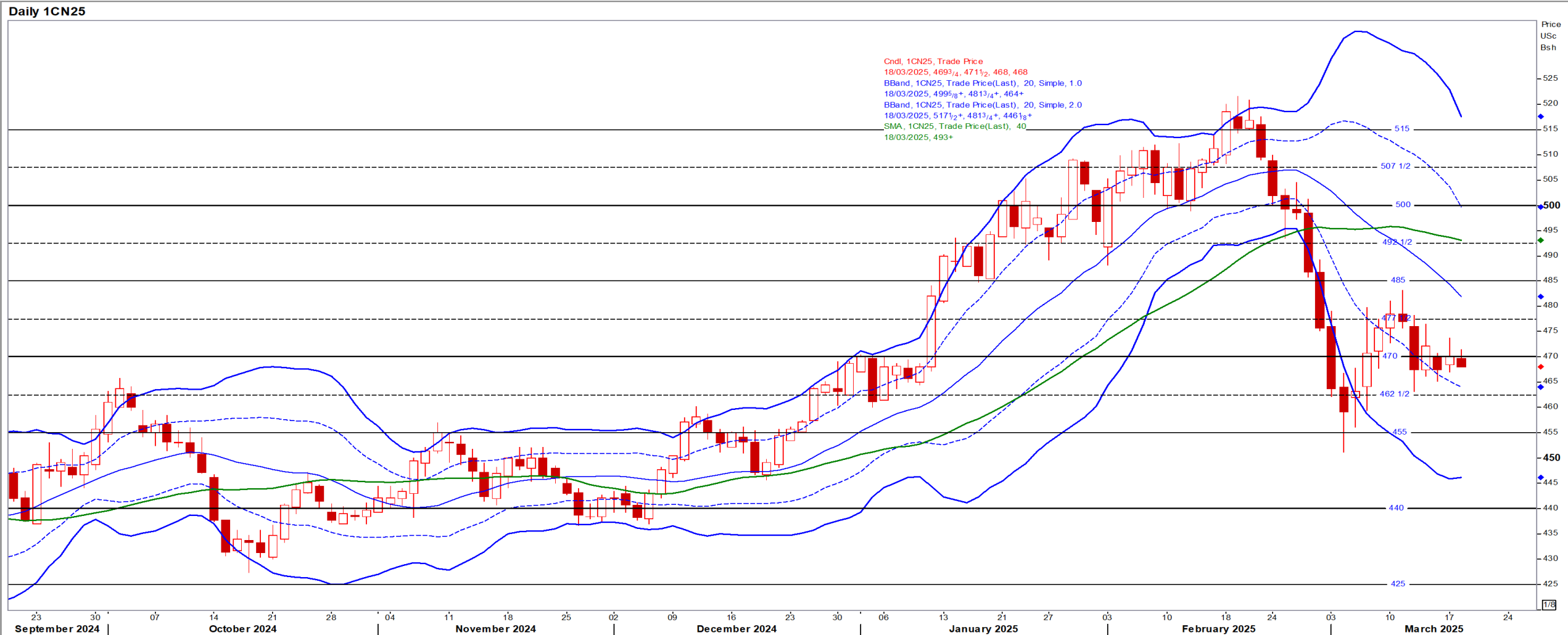
# South African Rand (ZAR)

USD/ZAR Weekly: Medium-term ZAR bullish < R18.30



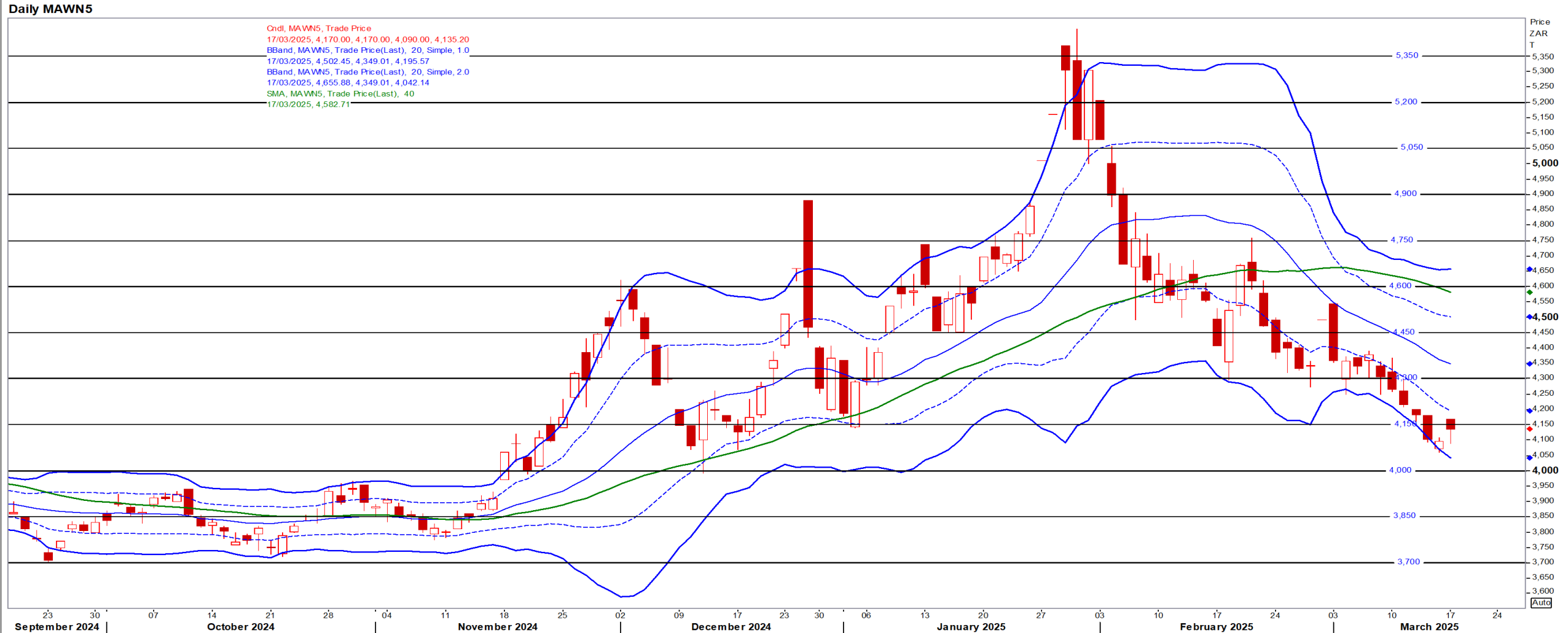
# USA Corn

Jul25 Daily: Contract status bearish < \$4.70



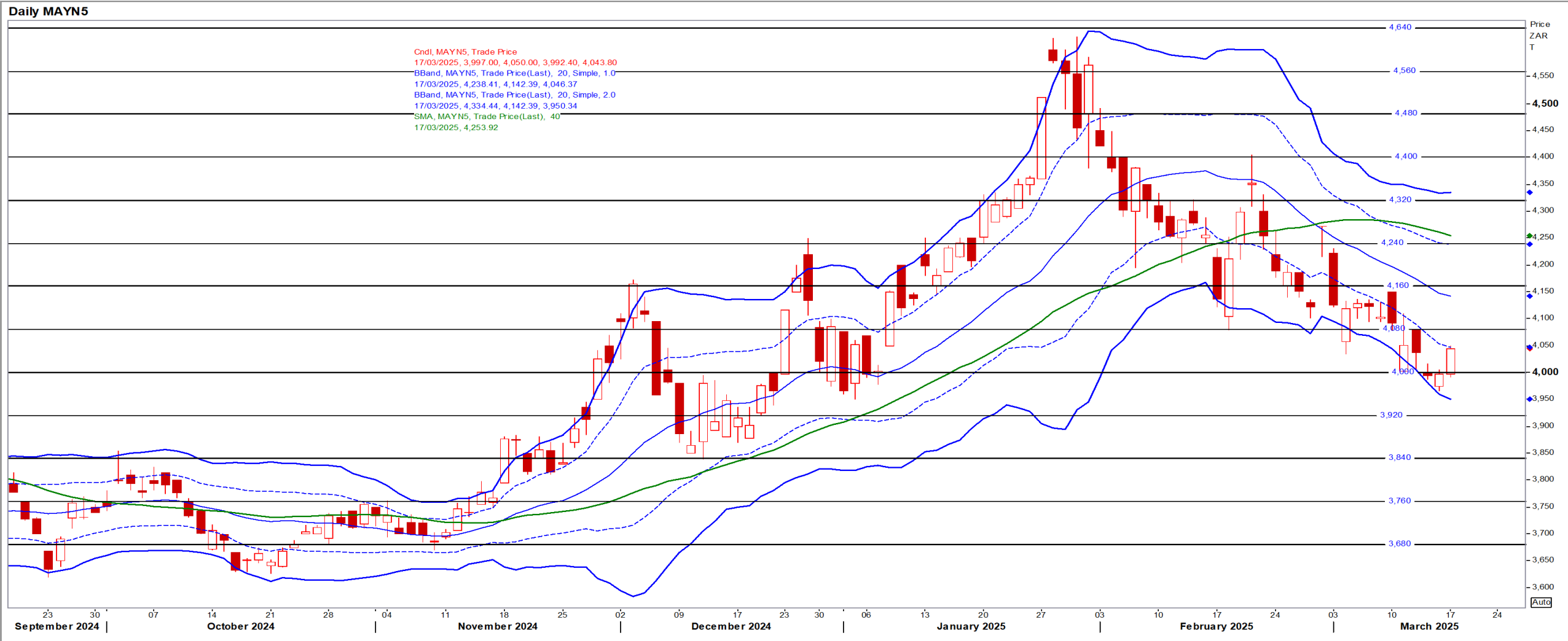
# White Maize

Jul25 Daily: Contract status bearish < R4600



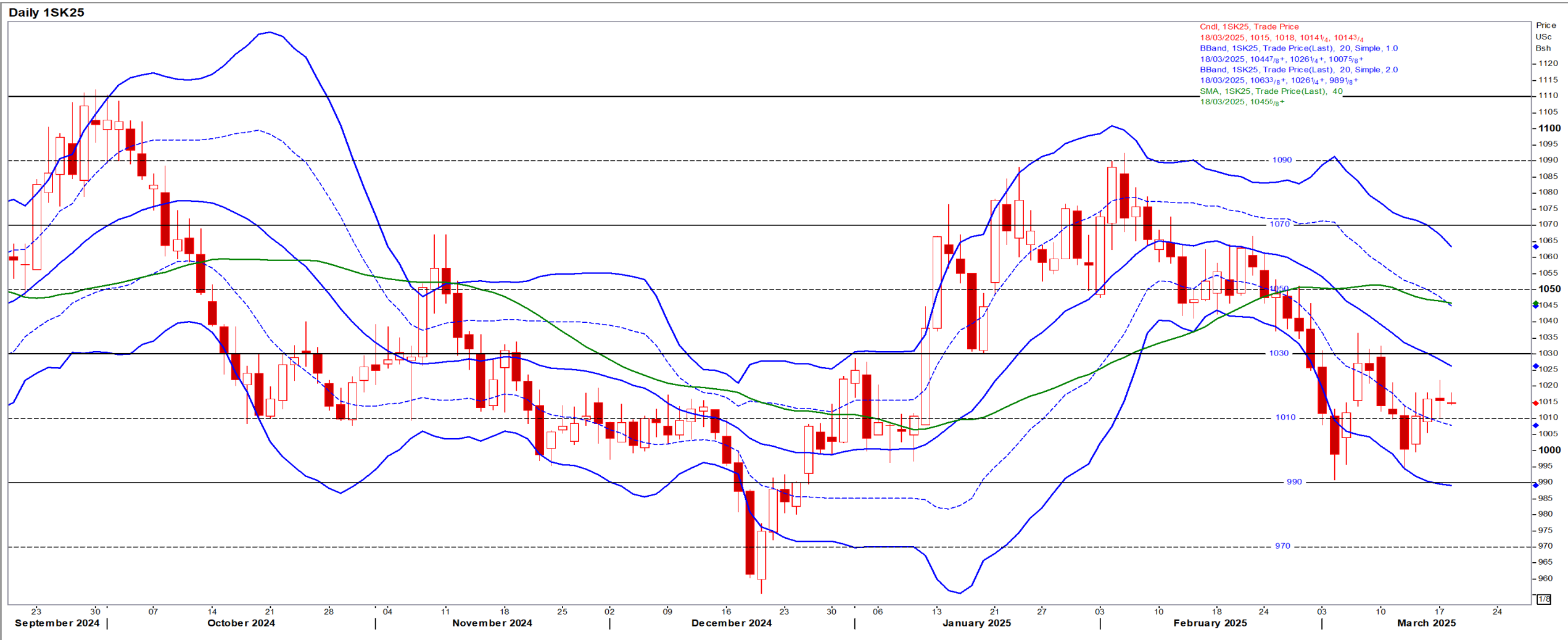
# Yellow Maize

Jul25 Daily: Contract status bearish < R4160



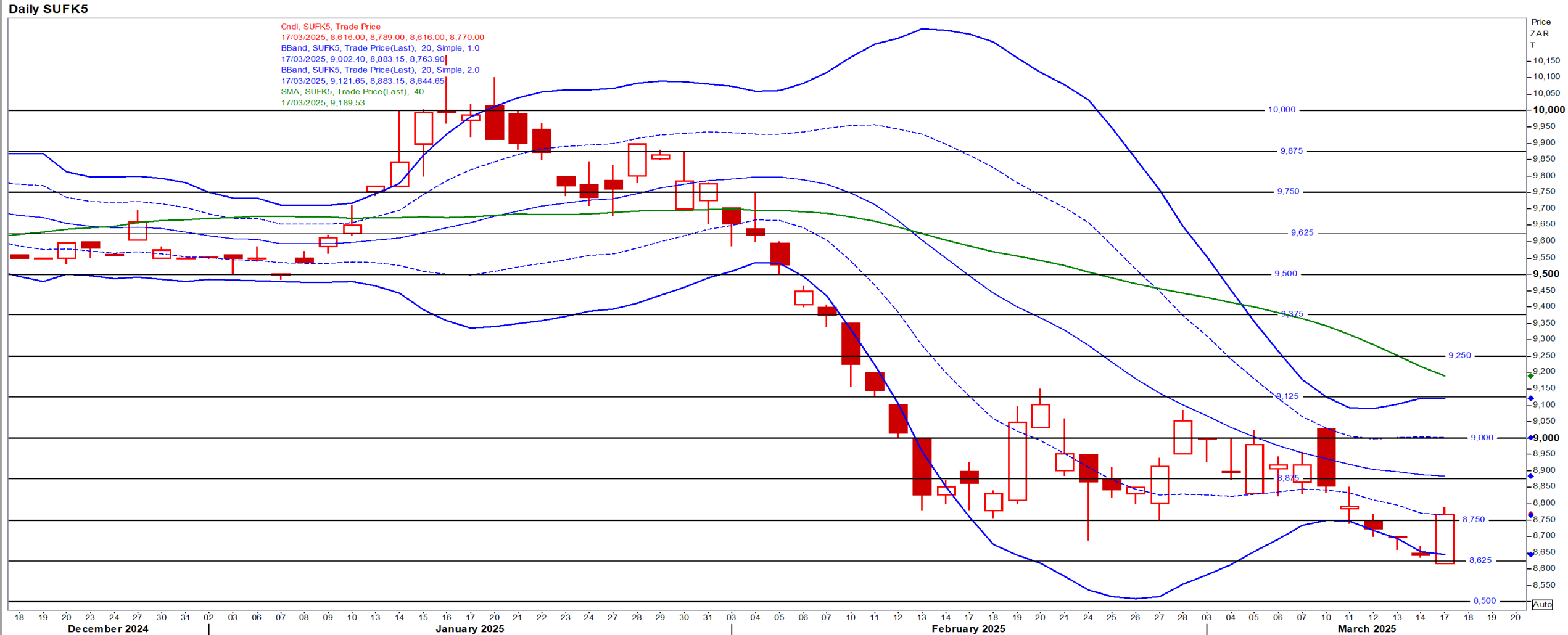
# USA Soya

May25 Daily: Contract status bearish < \$10.30



# Suns

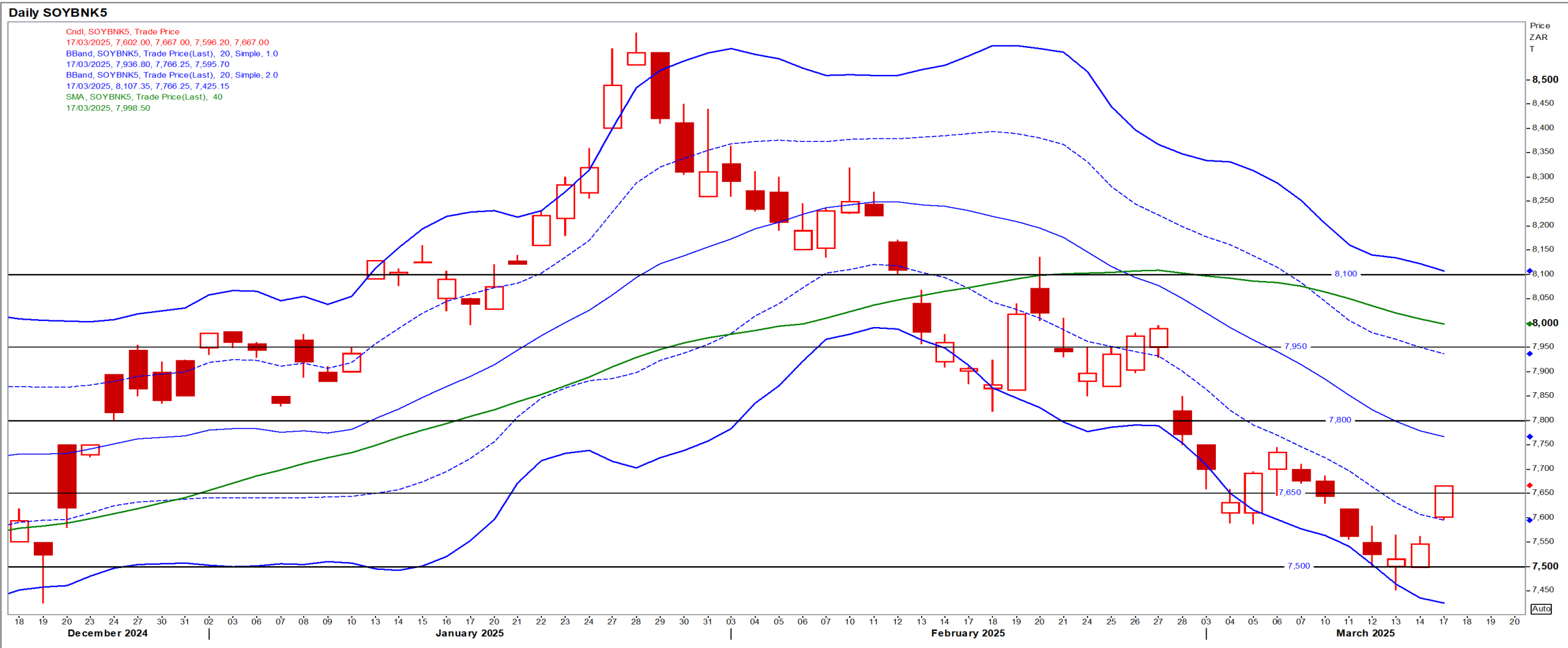
May25 Daily: Contract status very bearish < R9500





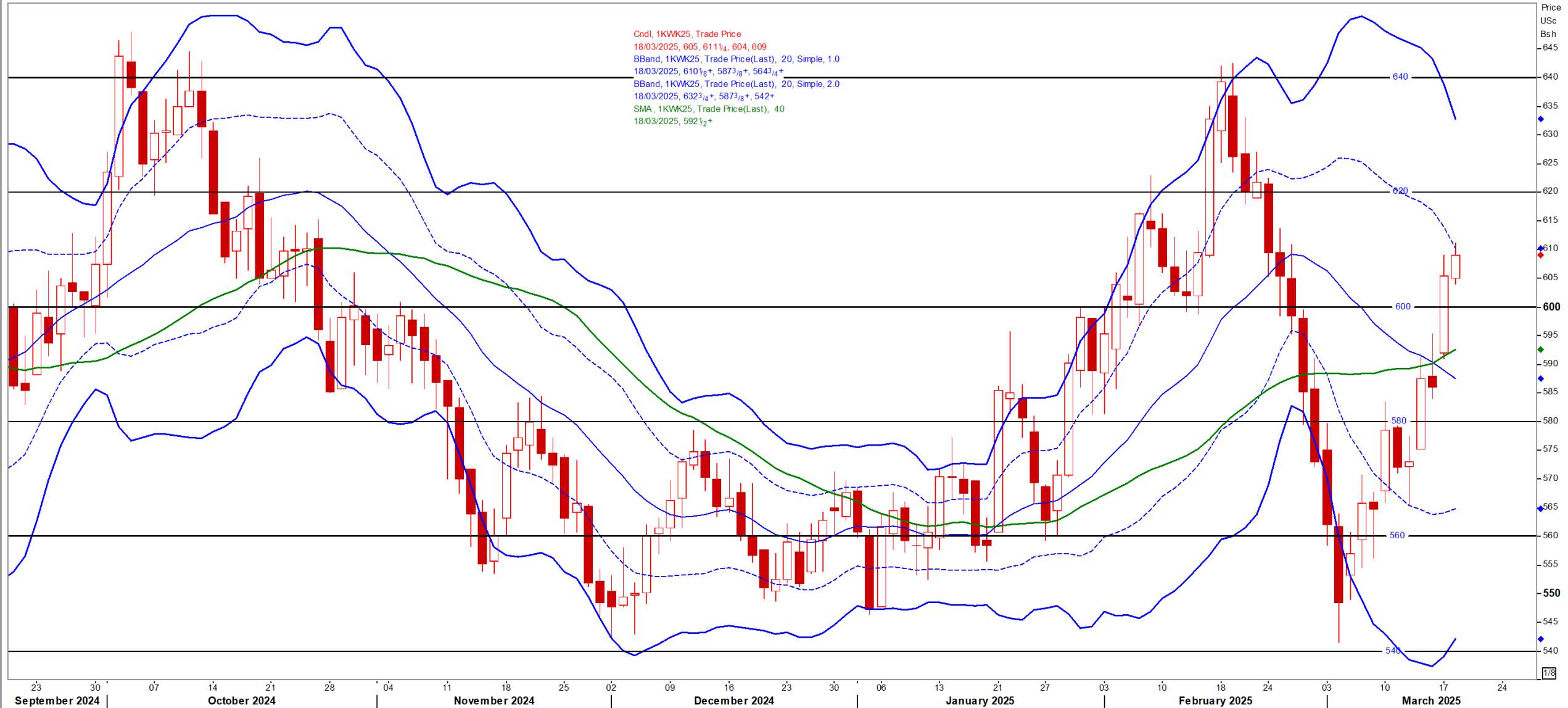
# SA Soya

May25 Daily: Contract status very bearish < R7800



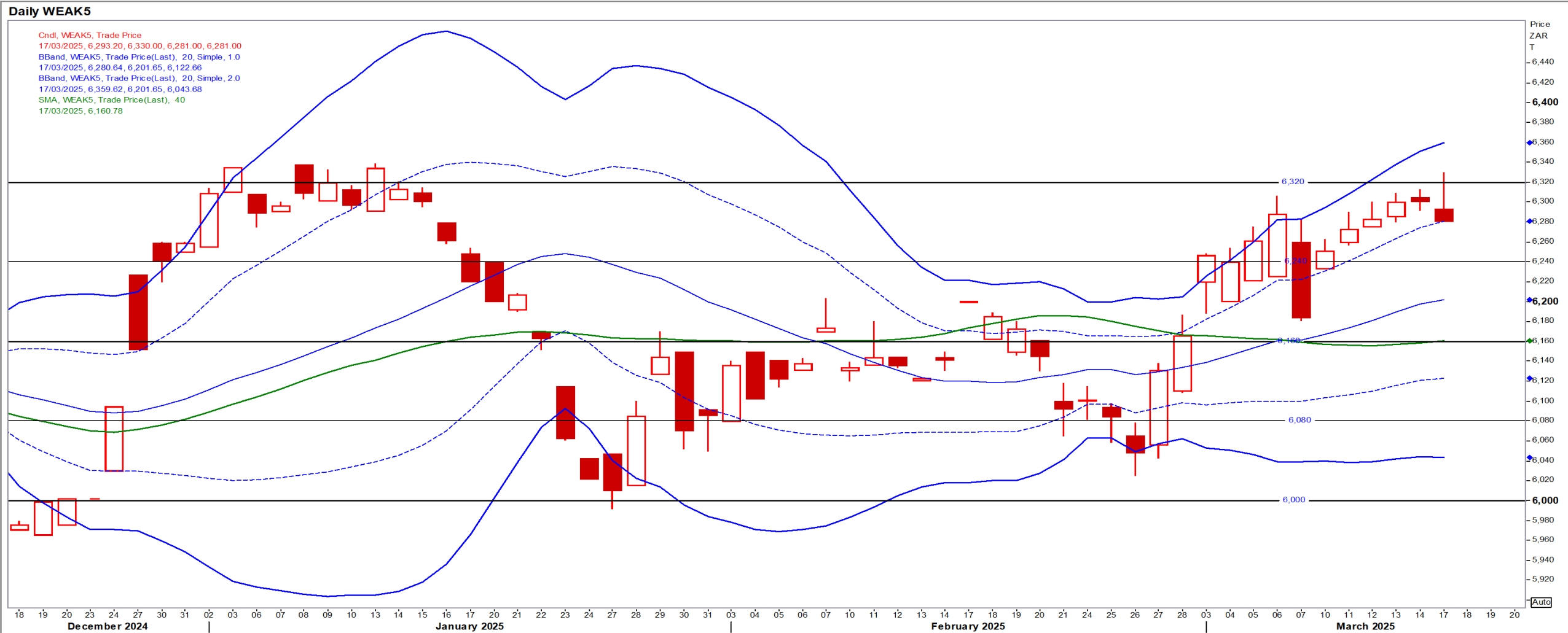
# US KANSAS Wheat

Daily 1KWK25



# SA Wheat

May25 Daily: Contract status very bullish > R6160

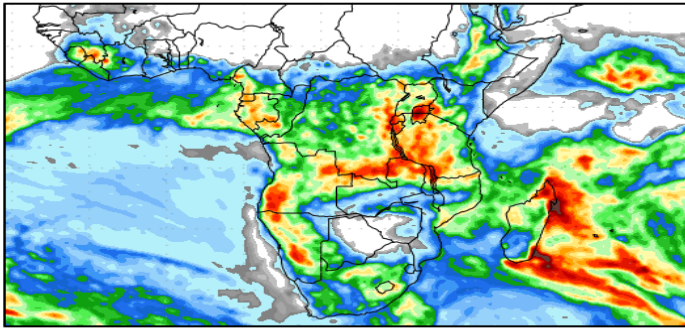
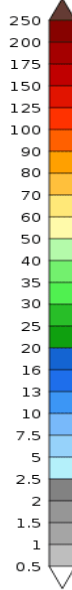


# Weather

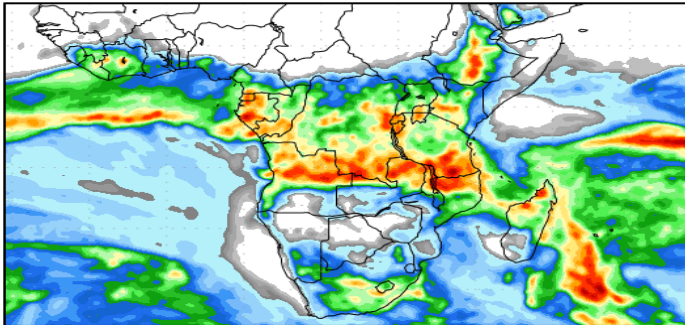
## SA Medium-term Precipitation Forecasts

### Precipitation Forecasts

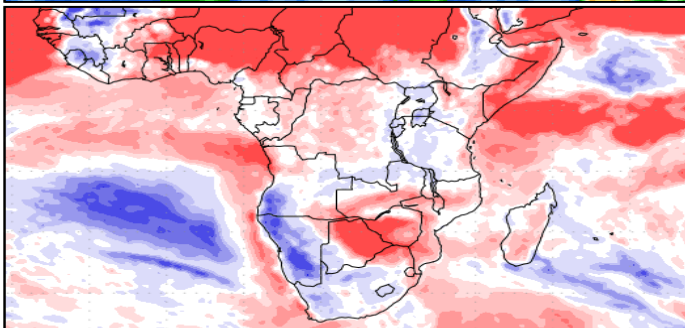
Precipitation (mm)  
during the period:



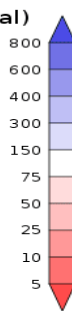
Sat, 15 MAR 2025 at 00Z  
-to-  
Sun, 23 MAR 2025 at 00Z



Sun, 23 MAR 2025 at 00Z  
-to-  
Mon, 31 MAR 2025 at 00Z



Precipitation (% of normal)  
during the first period:

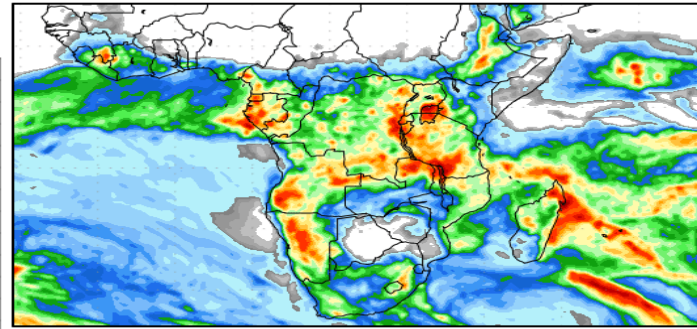
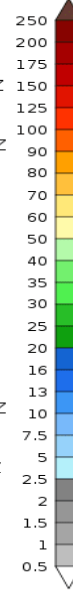


Sat, 15 MAR 2025 at 00Z  
-to-  
Sun, 23 MAR 2025 at 00Z

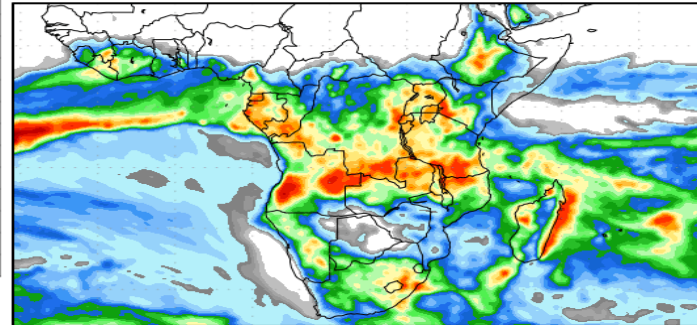
Precipitation forecasts from the National Centers for Environmental Prediction.  
Normal rainfall derived from Xie-Arkin (CMAP) Monthly Climatology for 1979-2003.  
Forecast Initialization Time: 00Z15MAR2025

### Precipitation Forecasts

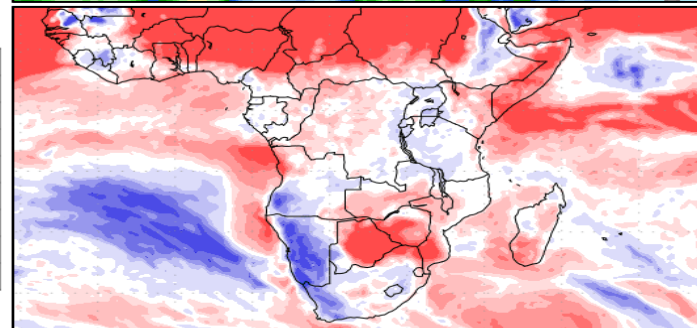
Precipitation (mm)  
during the period:



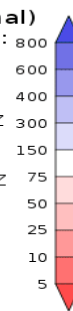
Sun, 16 MAR 2025 at 00Z  
-to-  
Mon, 24 MAR 2025 at 00Z



Mon, 24 MAR 2025 at 00Z  
-to-  
Tue, 01 APR 2025 at 00Z



Precipitation (% of normal)  
during the first period:



Sun, 16 MAR 2025 at 00Z  
-to-  
Mon, 24 MAR 2025 at 00Z

Precipitation forecasts from the National Centers for Environmental Prediction.  
Normal rainfall derived from Xie-Arkin (CMAP) Monthly Climatology for 1979-2003.  
Forecast Initialization Time: 00Z16MAR2025