

Daily market
Report
20 Mar 25



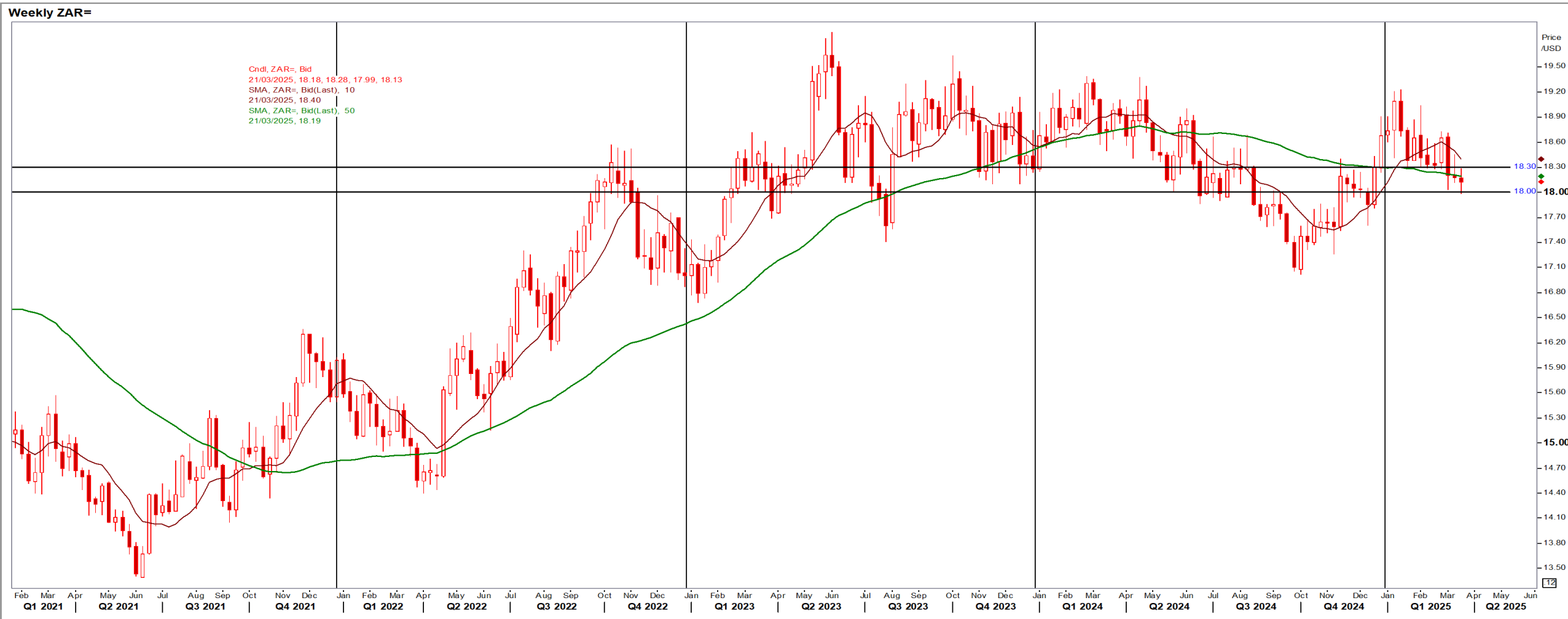
Parity Movements (implied price moves)

USA Movement (Overnight)		Cents	Currencies	20-Mar-25	08:02:04
CORN CBOT (Jul25)	472.00	5.25	R/\$ last	R 18.1146	-0.1094
SOY CBOT (May25)	1,007.75	-5.50	Euro=	\$ 1.0894	-0.0008
W1 CBOT (May25)	566.25	1.25	GOLD	\$ 3,046	15.6800
W2 KCBT (May25)	596.25	-4.75	BRENT	\$ 71.16	1.09
BlackSea Wheat (Near)	215.00	0.00			
Index Change					
Maize (Jul25)	3,366	R 17.34	Wheat CBOT (May25)	3,769	R -14.39
Soya (May25)	6,707	R -77.33	Wheat Kansas (May25)	3,969	R -55.77
BlackSea Wheat Near	3,895	R -23.52	RAND EFFECT ON WHEAT PARITY	4,000	-R 24.16

South African Rand (ZAR)

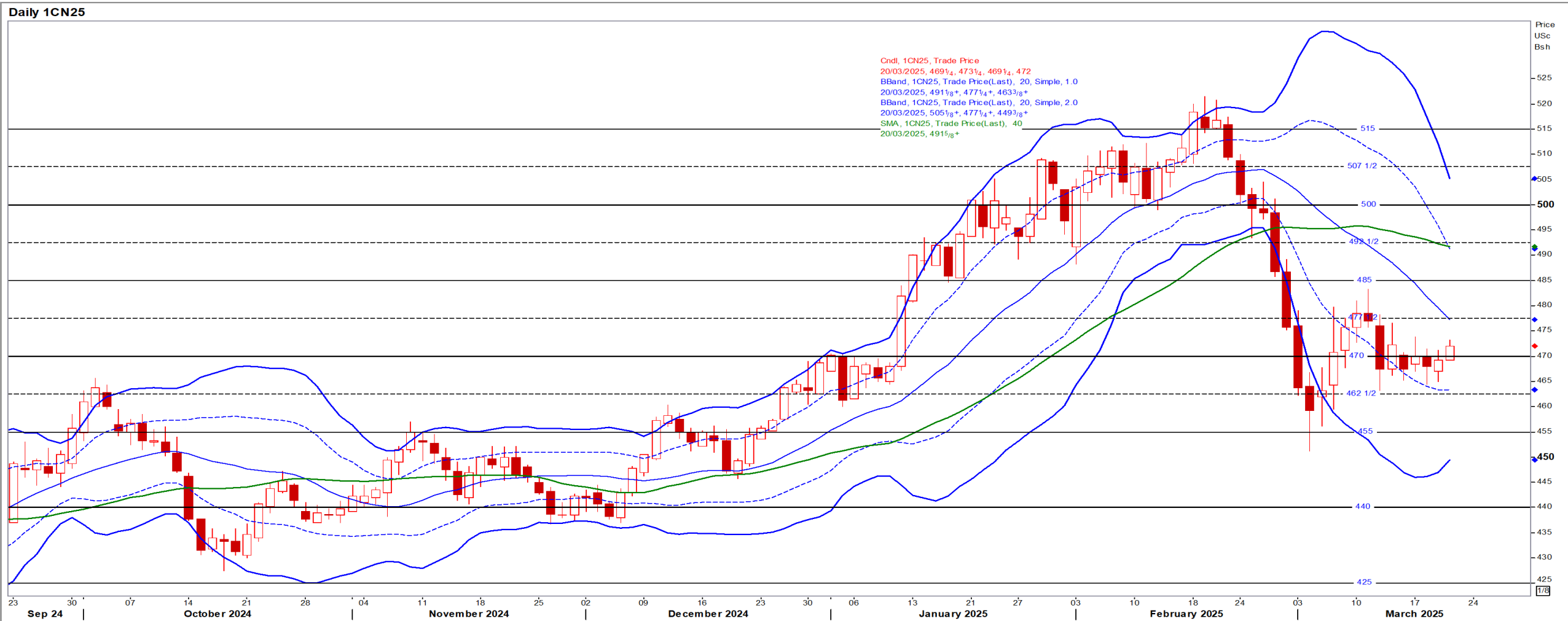
USD/ZAR Weekly: Medium-term ZAR bullish < R18.30

- ZAR softened on local inflation data [steady @ 3.1% vs 3.3% poll] and an interest rate decision by the US Fed [] – Reuters



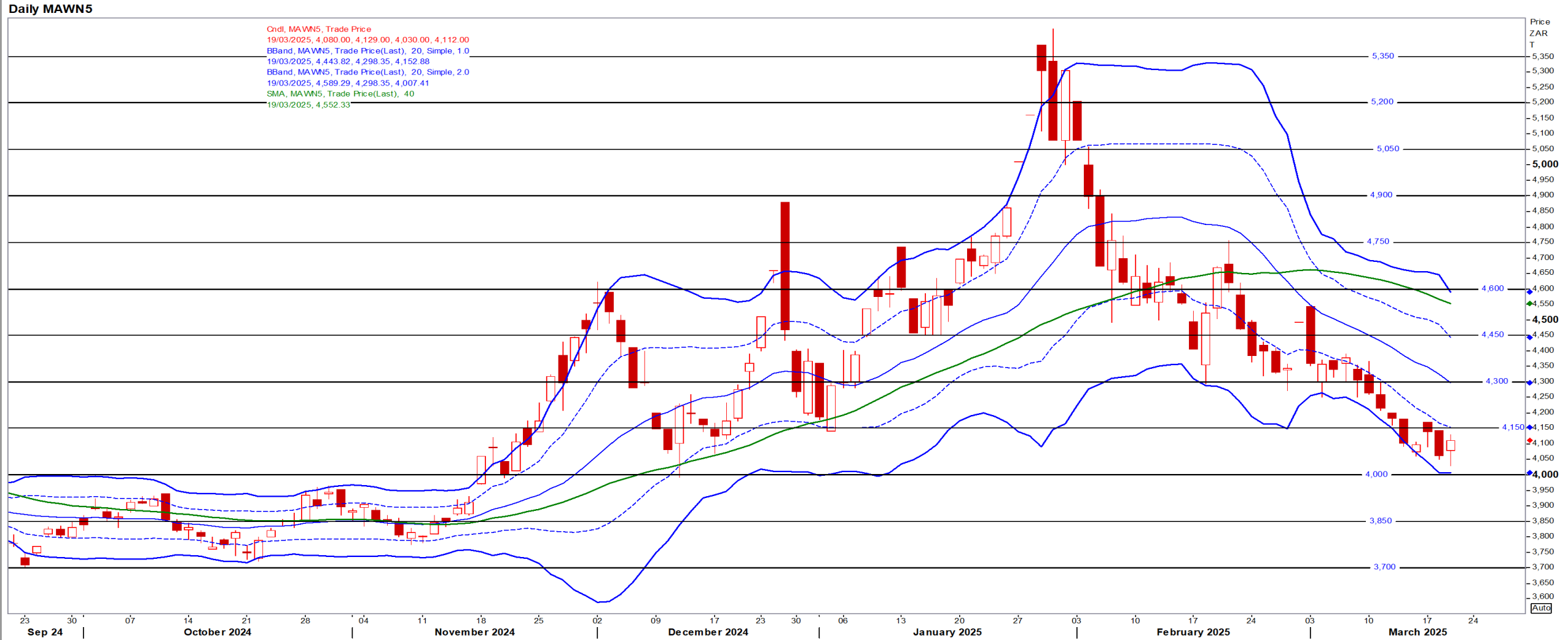
USA Corn

Jul25 Daily: Contract status bullish > \$4.70



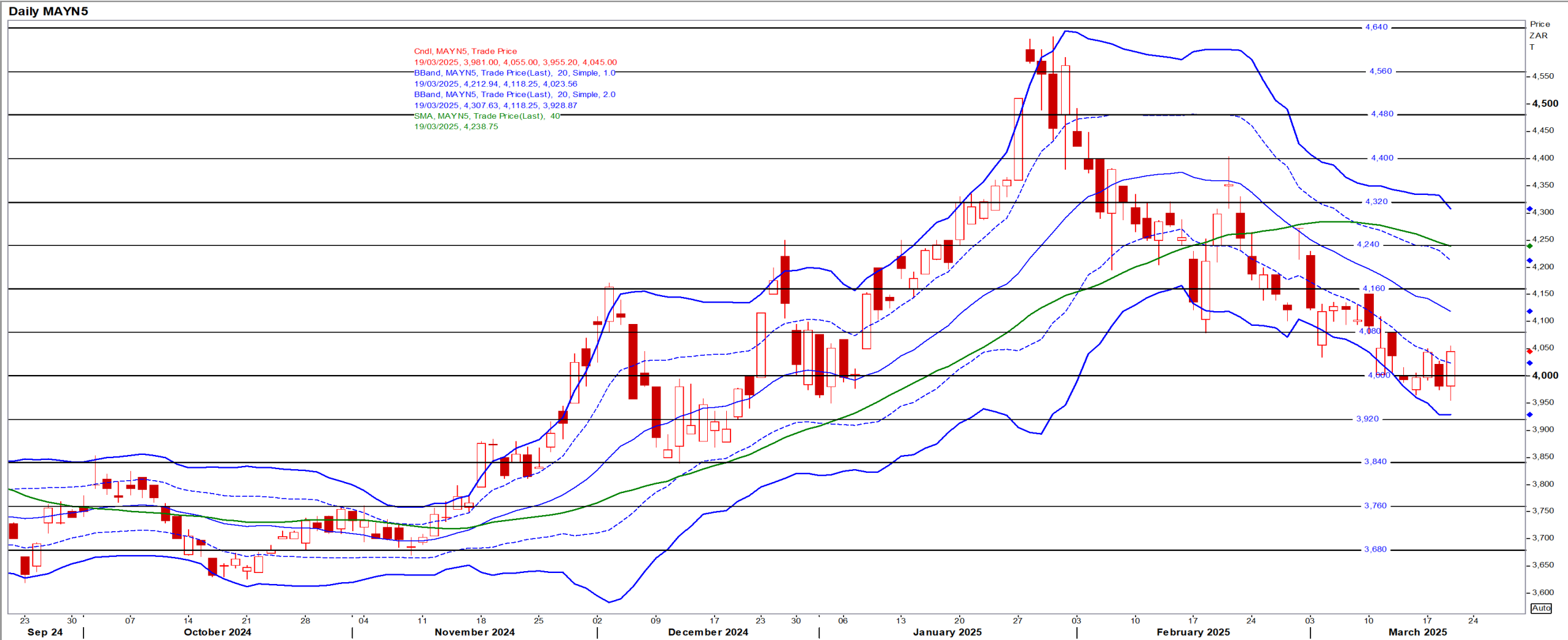
White Maize

Jul25 Daily: Contract status bearish < R4600



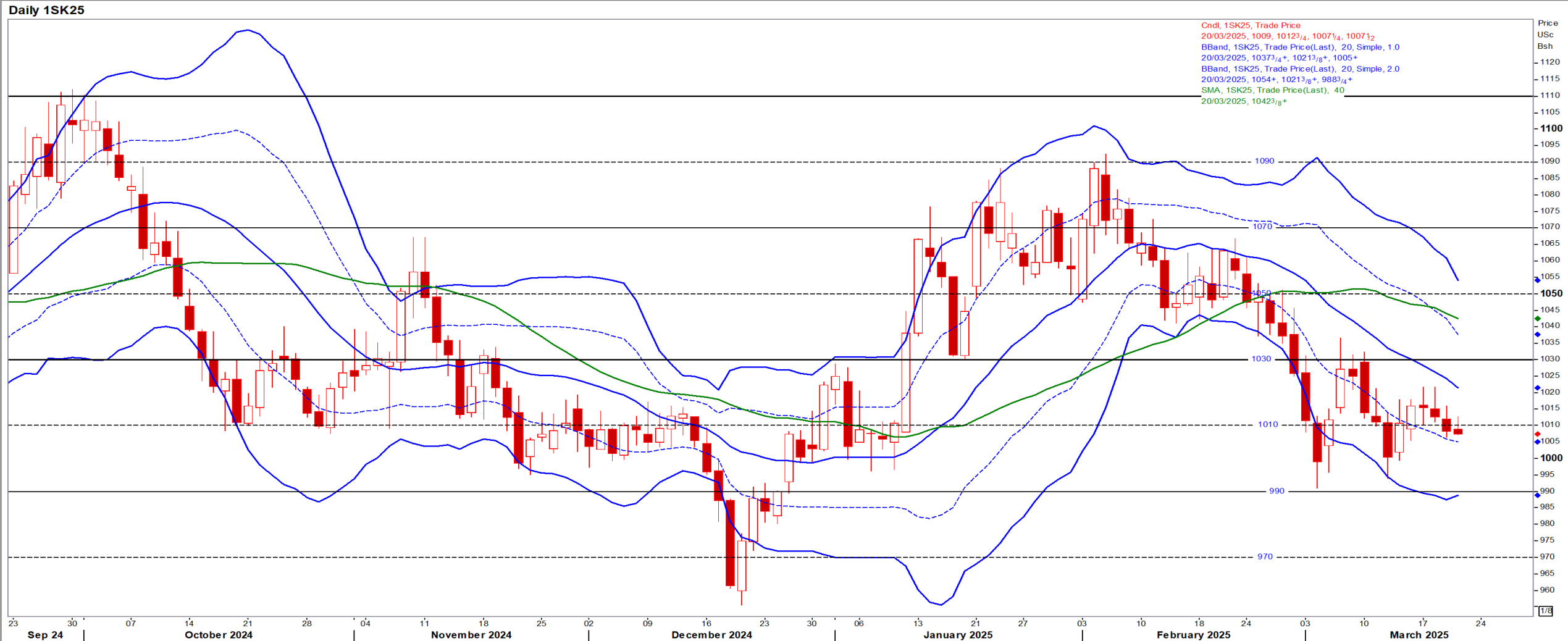
Yellow Maize

Jul25 Daily: Contract status bearish < R4160



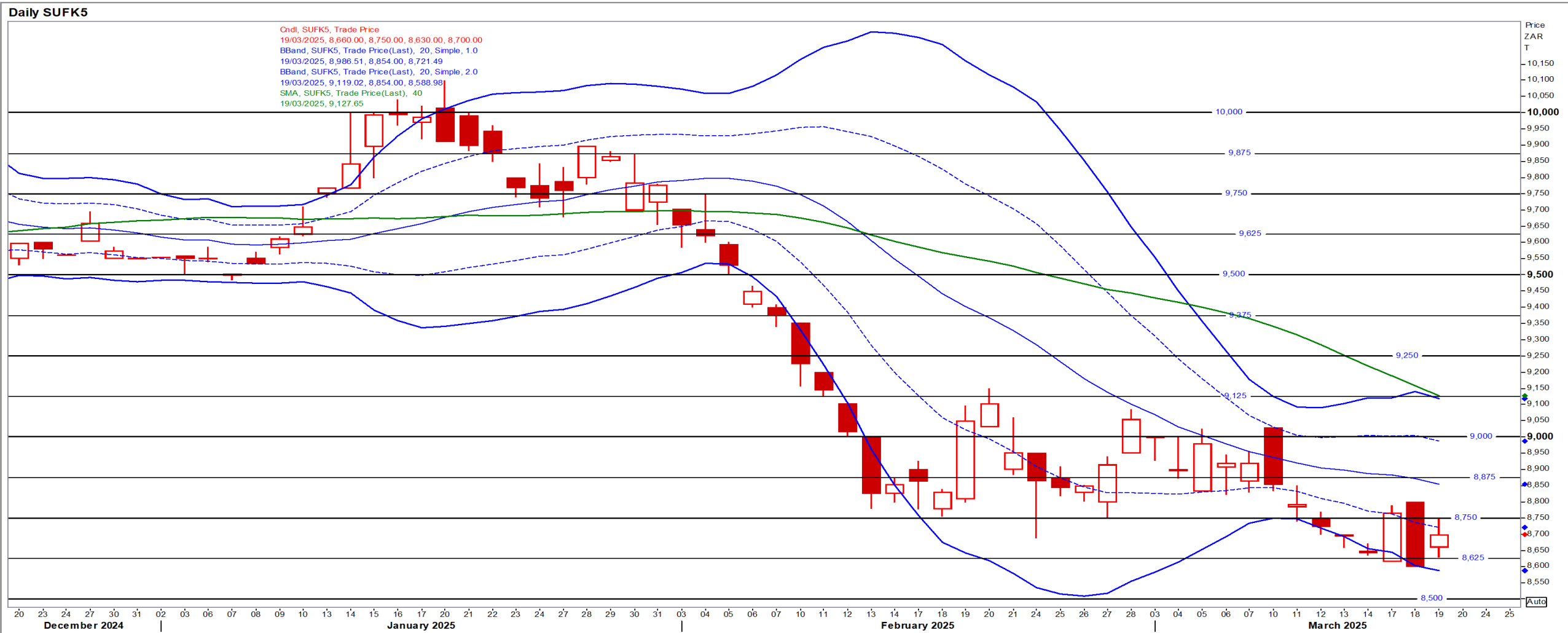
USA Soya

May25 Daily: Contract status bearish < \$10.30



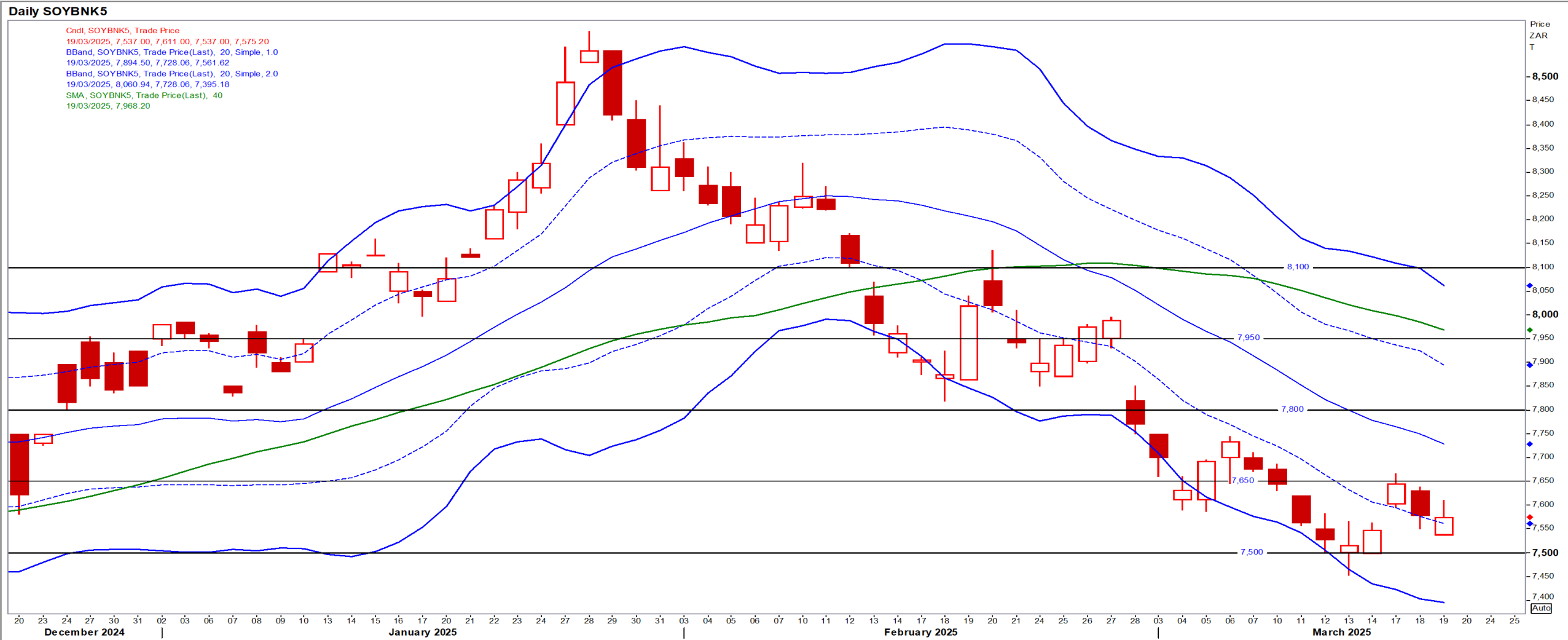
Suns

May25 Daily: Contract status very bearish < R9500



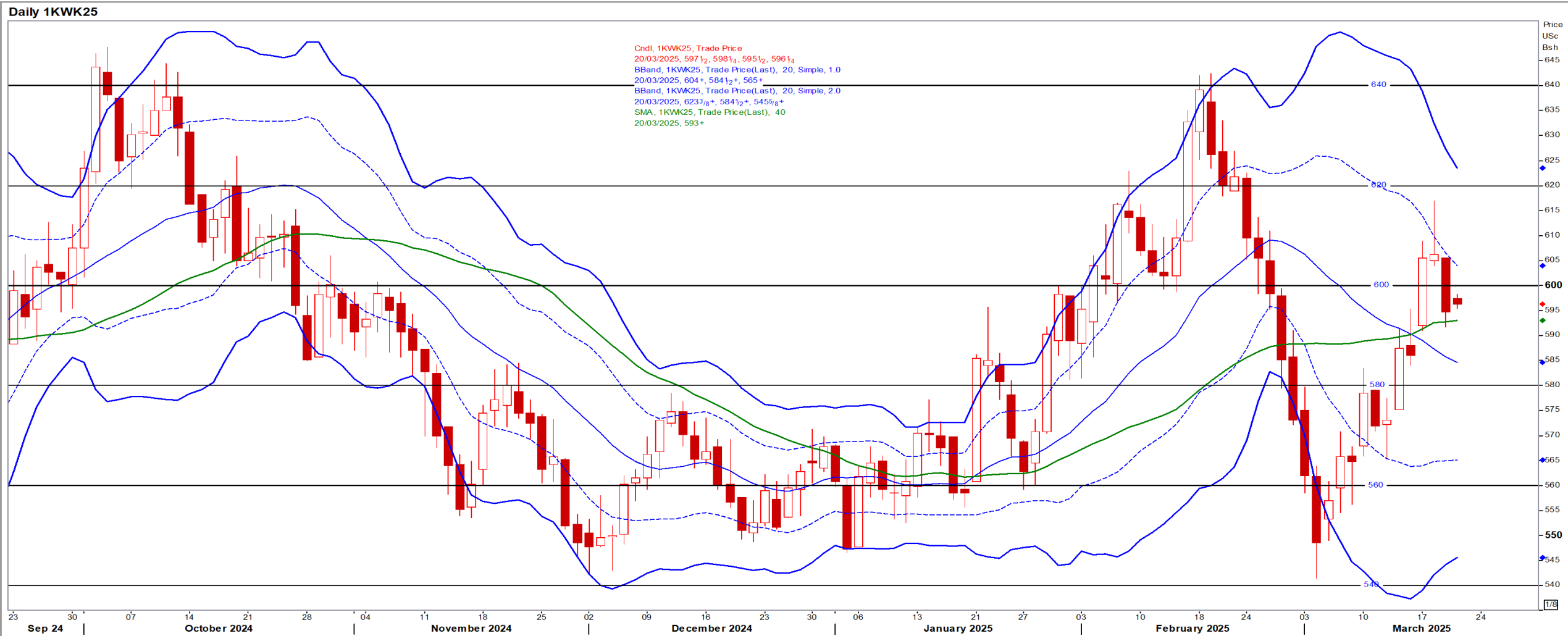
SA Soya

May25 Daily: Contract status very bearish < R7800



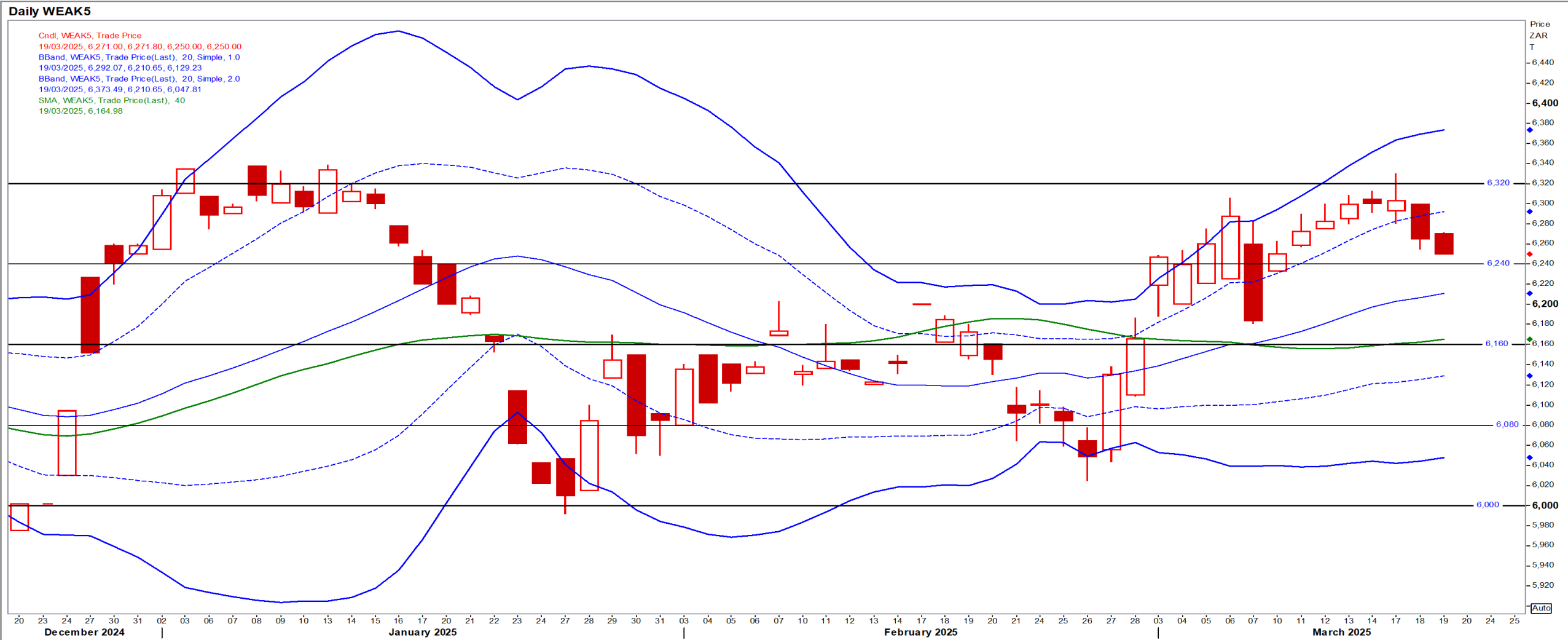
US KANSAS Wheat

May25 Daily: Contract bearish < \$6.00



SA Wheat

May25 Daily: Contract status very bullish > R6160

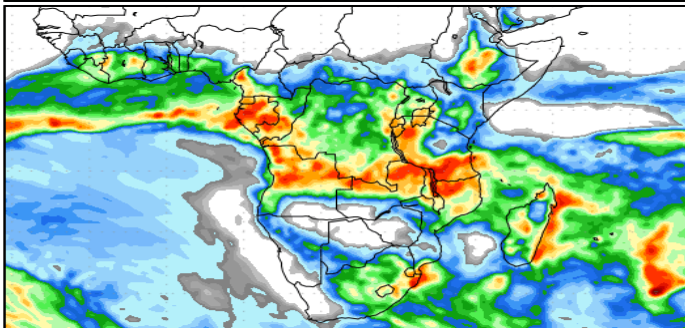
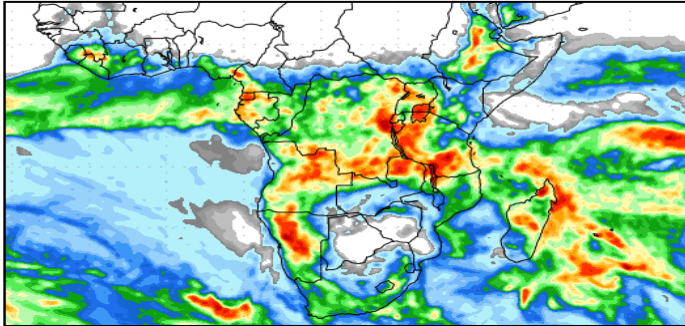
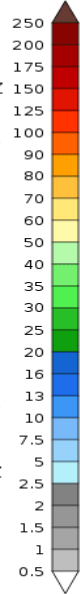


Weather

SA Medium-term Precipitation Forecasts

Precipitation Forecasts

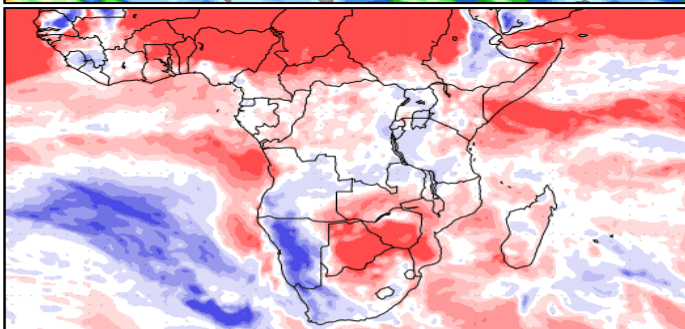
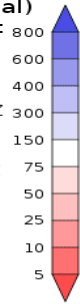
Precipitation (mm)
during the period:



Mon, 17 MAR 2025 at 00Z
-to-
Tue, 25 MAR 2025 at 00Z

Tue, 25 MAR 2025 at 00Z
-to-
Wed, 02 APR 2025 at 00Z

Precipitation (% of normal)
during the first period:



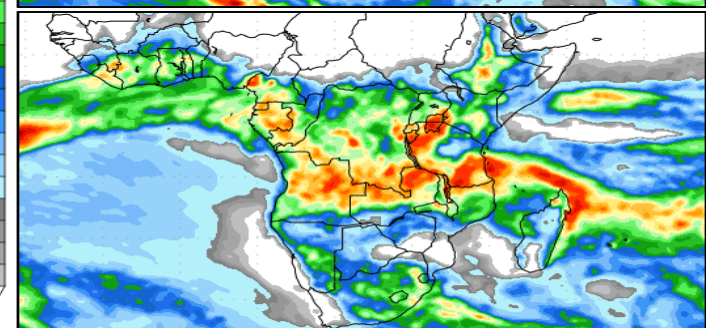
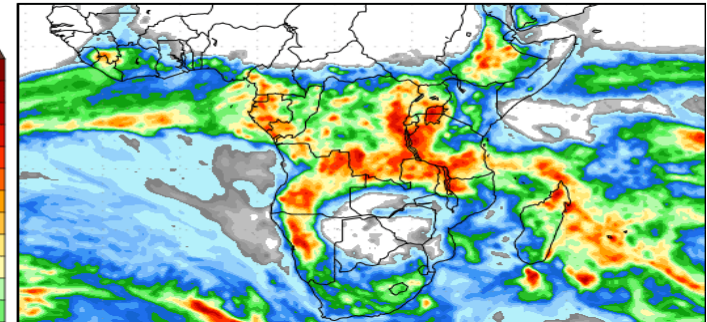
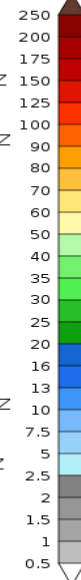
Mon, 17 MAR 2025 at 00Z
-to-
Tue, 25 MAR 2025 at 00Z

Precipitation forecasts from the National Centers for Environmental Prediction.
Normal rainfall derived from Xie-Arkin (CMAP) Monthly Climatology for 1979-2003.
Forecast Initialization Time: 00Z17MAR2025

GrADS/COLA

Precipitation Forecasts

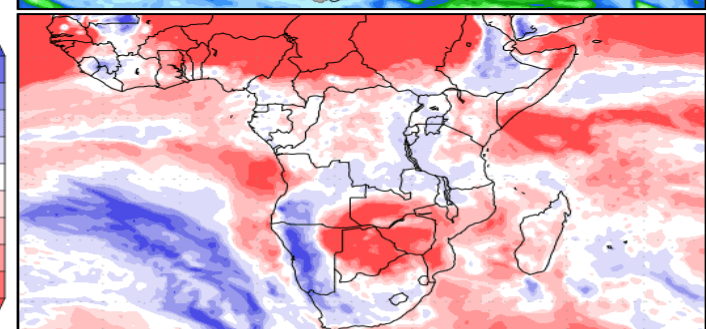
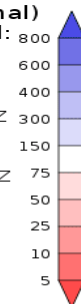
Precipitation (mm)
during the period:



Tue, 18 MAR 2025 at 00Z
-to-
Wed, 26 MAR 2025 at 00Z

Wed, 26 MAR 2025 at 00Z
-to-
Thu, 03 APR 2025 at 00Z

Precipitation (% of normal)
during the first period:



Tue, 18 MAR 2025 at 00Z
-to-
Wed, 26 MAR 2025 at 00Z

Precipitation forecasts from the National Centers for Environmental Prediction.
Normal rainfall derived from Xie-Arkin (CMAP) Monthly Climatology for 1979-2003.
Forecast Initialization Time: 00Z18MAR2025

GrADS/COLA

GrADS/COLA