

Daily market
Report
24 Mar 25



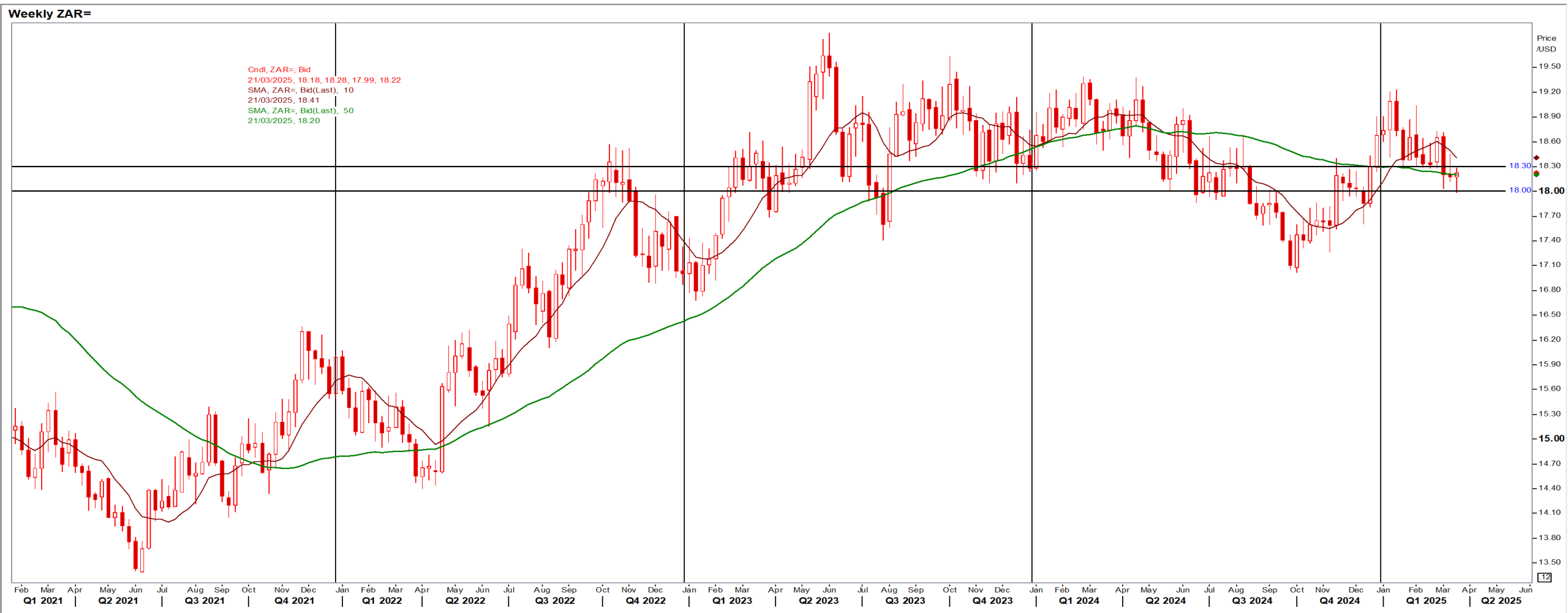
Parity Movements (implied price moves)

USA Movement (Overnight)	Cents	Currencies	24-Mar-25	07:54:18
CORN CBOT (Jul25)	471.25	0.00 R/\$ last	R 18.2161	-0.0029
SOY CBOT (May25)	1,007.75	3.25 Euro=	\$ 1.0825	-0.0025
W1 CBOT (May25)	557.75	-2.75 GOLD	\$ 3,021	-20.3800
W2 KCBT (May25)	590.00	-0.75 BRENT	\$ 71.99	0.99
BlackSea Wheat (Near)	227.00	12.00		
Index Change				
Maize (Jul25)	3,380	R -0.54	Wheat CBOT (May25)	3,733 R -19.00
Soya (May25)	6,744	R 20.68	Wheat Kansas (May25)	3,949 R -5.65
BlackSea Wheat Near	4,135	R 217.97	RAND EFFECT ON WHEAT PARITY	3,954 -R 0.63

South African Rand (ZAR)

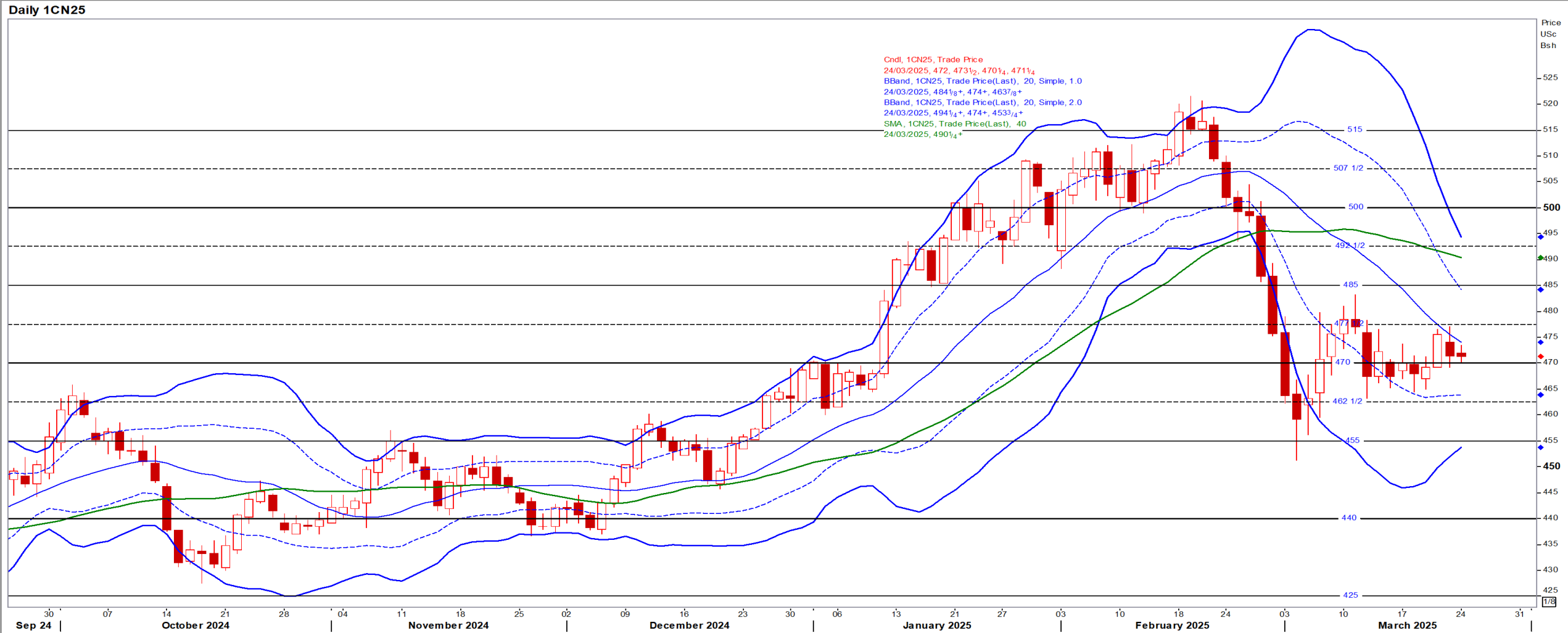
USD/ZAR Weekly: Medium-term ZAR bullish < R18.30

- ZAR weaker ahead of the anticipated interest rate decision by the SARB with the Reuters poll suggesting unchanged rates [unchanged 7.5%] – Reuters



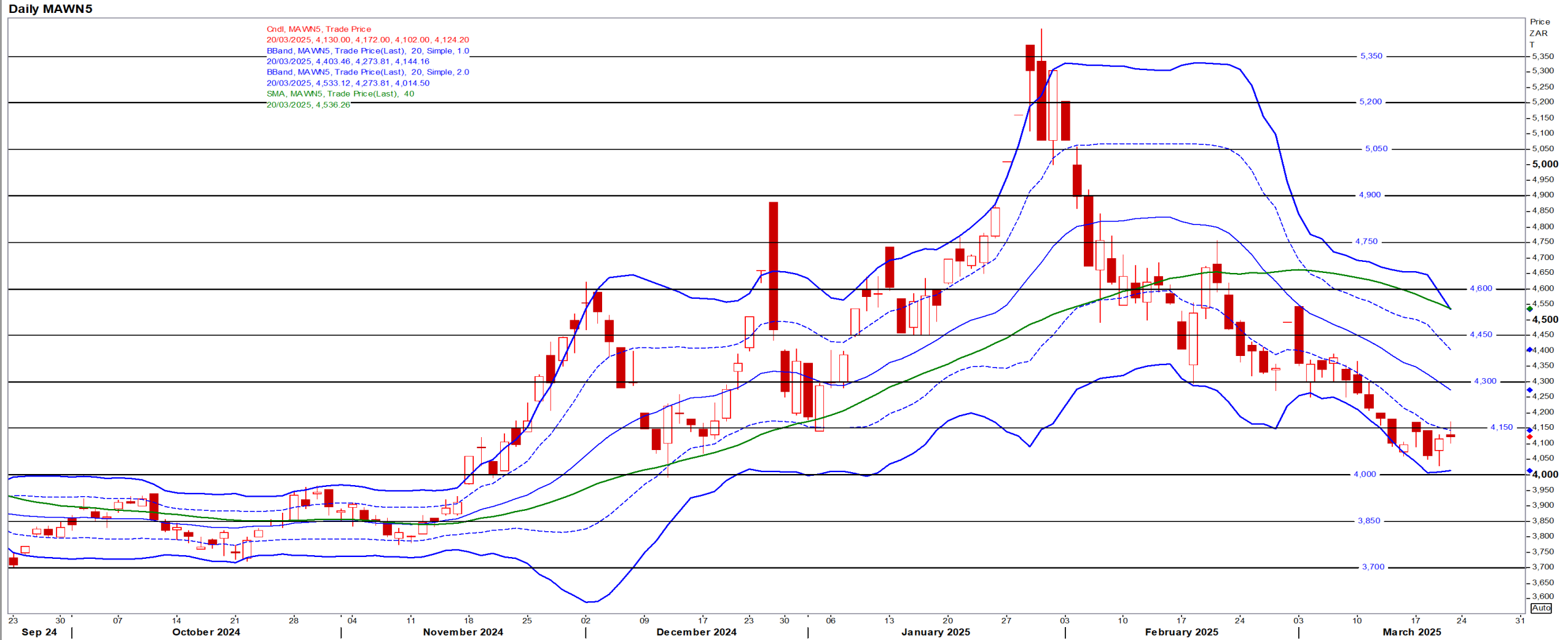
USA Corn

Jul25 Daily: Contract status bullish > \$4.70



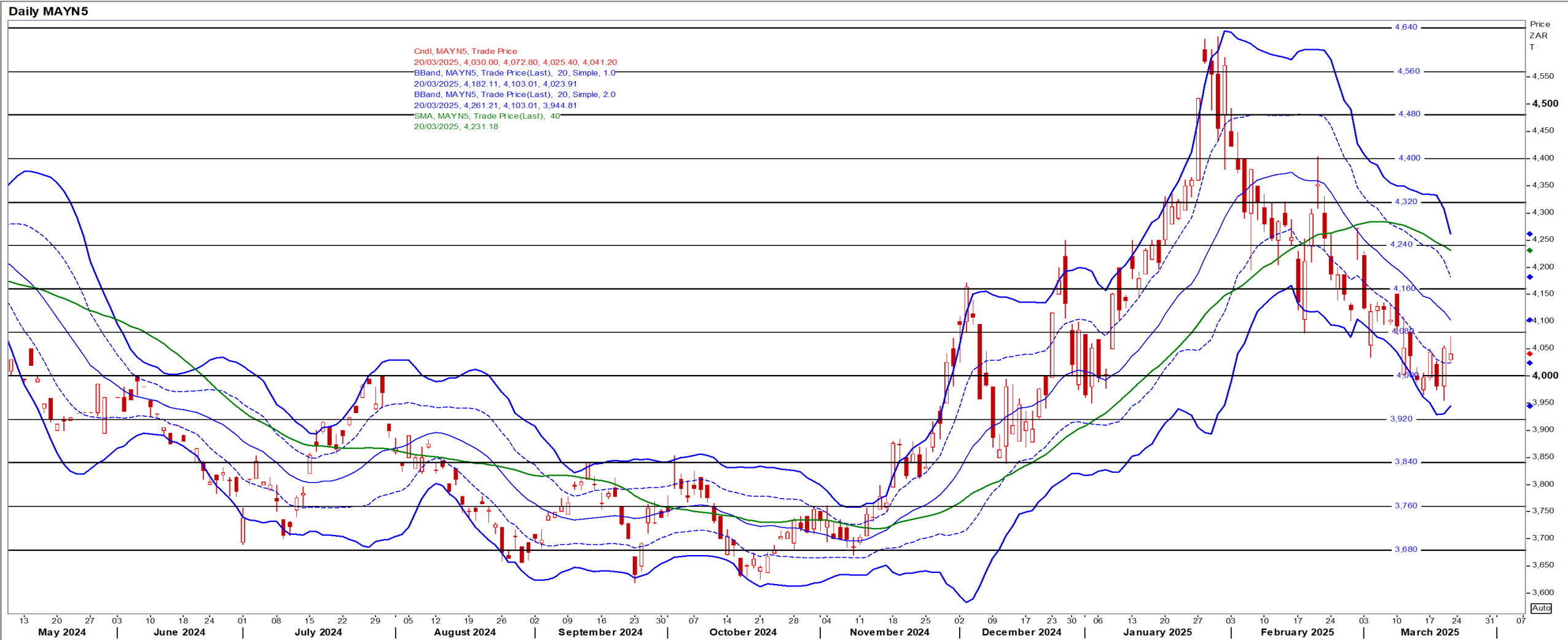
White Maize

Jul25 Daily: Contract status bearish < R4600



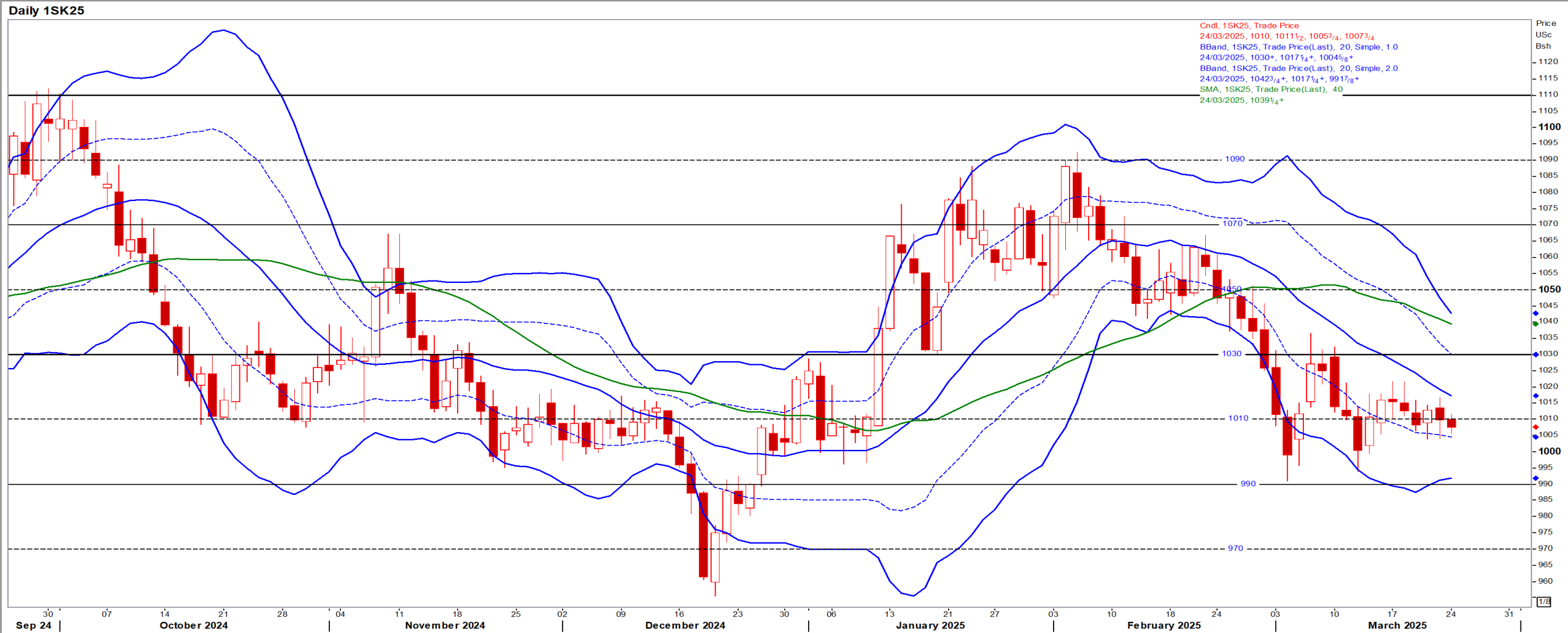
Yellow Maize

Jul25 Daily: Contract status bearish < R4160



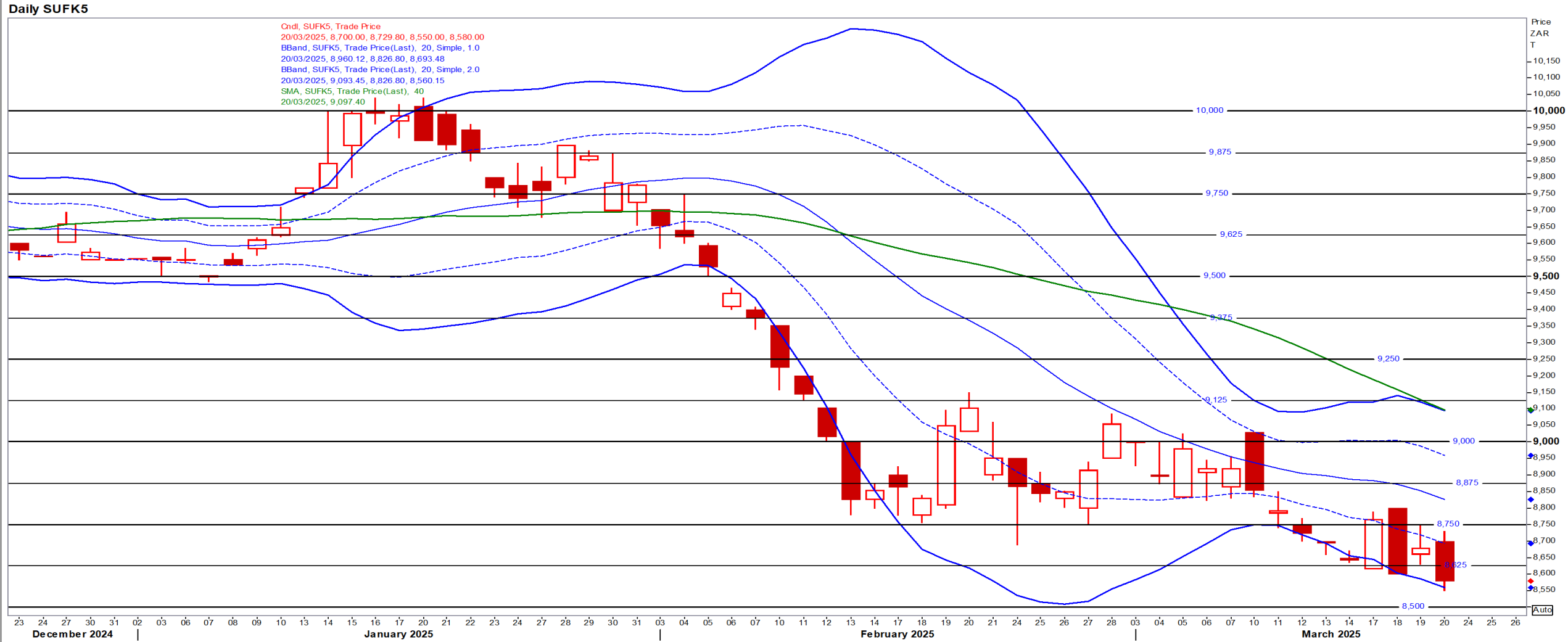
USA Soya

May25 Daily: Contract status bearish < \$10.30



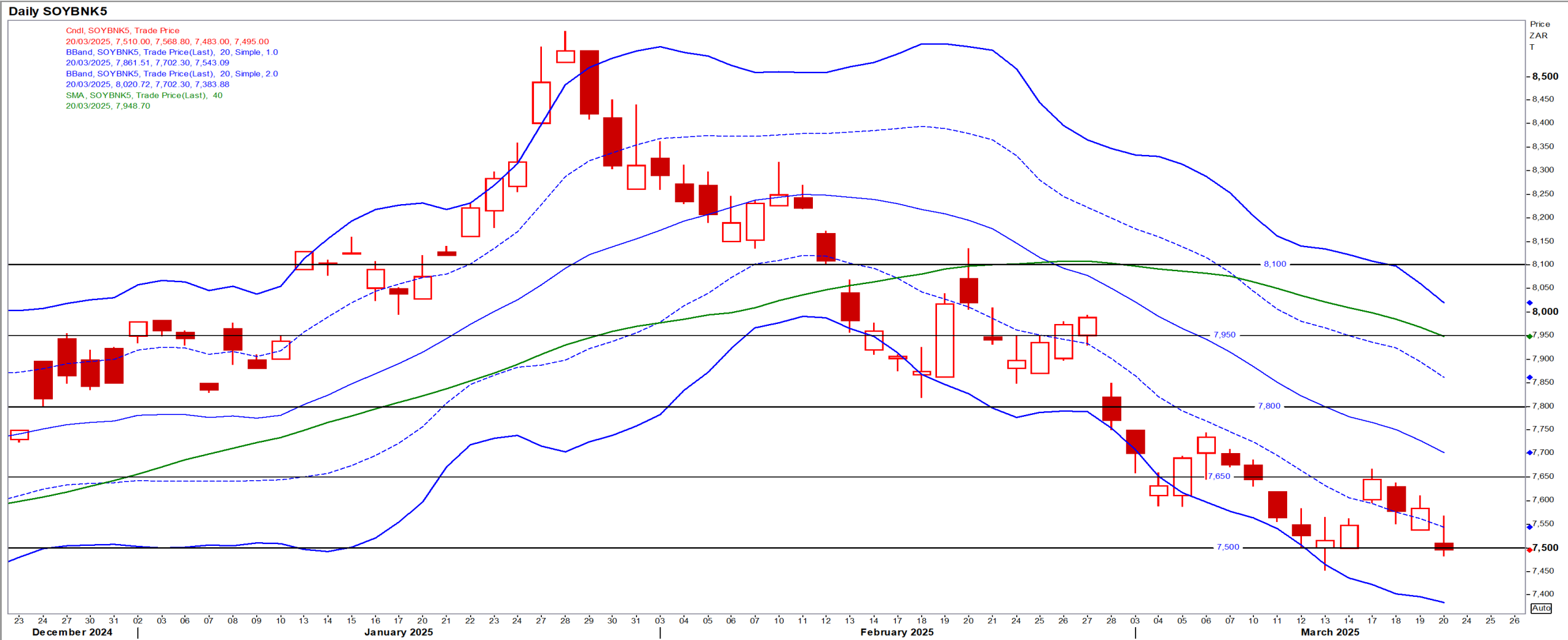
Suns

May25 Daily: Contract status bearish < R9000



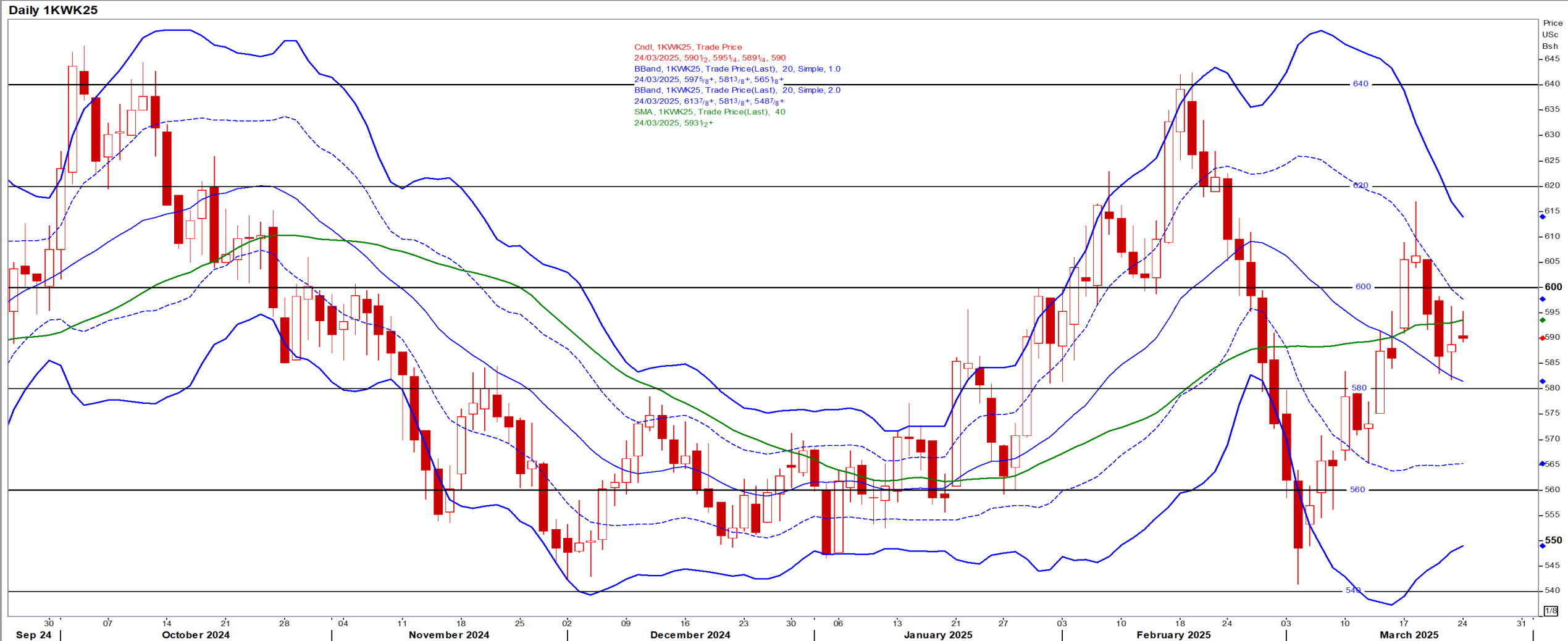
SA Soya

May25 Daily: Contract status very bearish < R7800



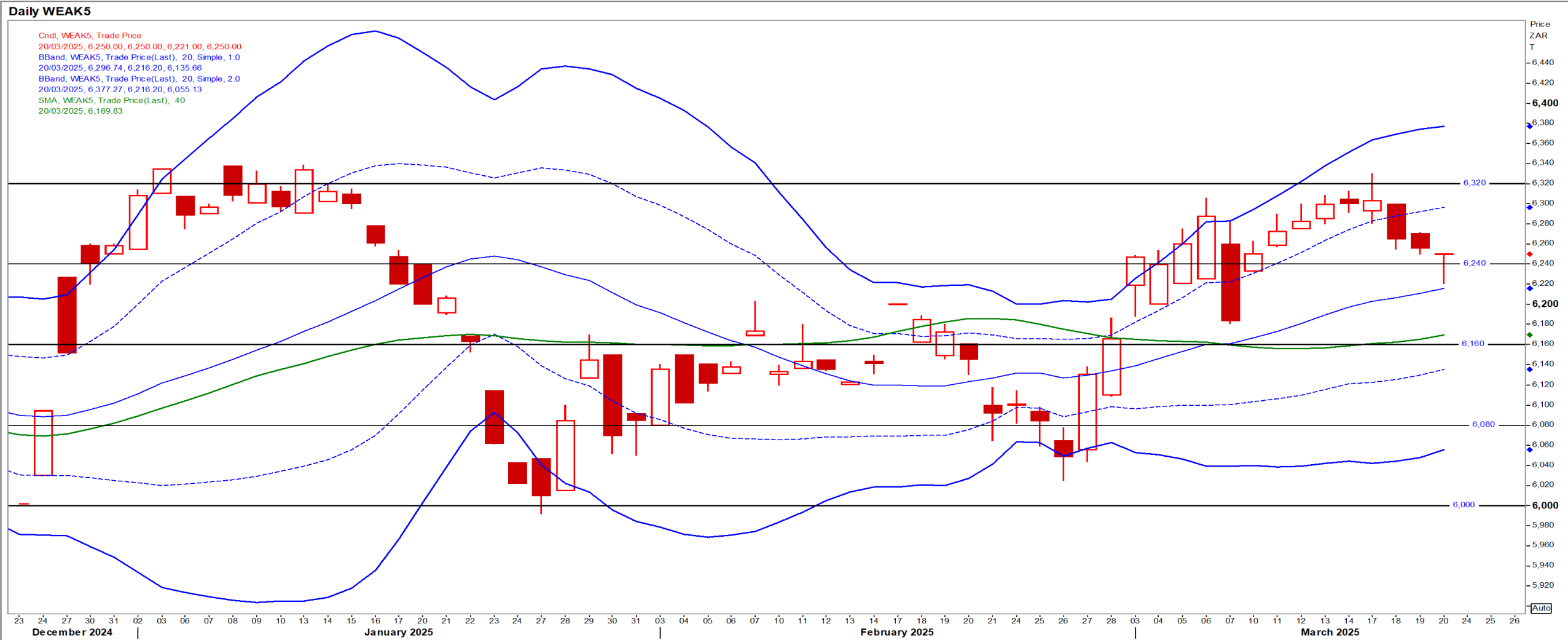
US KANSAS Wheat

May25 Daily: Contract bearish < \$6.00



SA Wheat

May25 Daily: Contract status very bullish > R6160

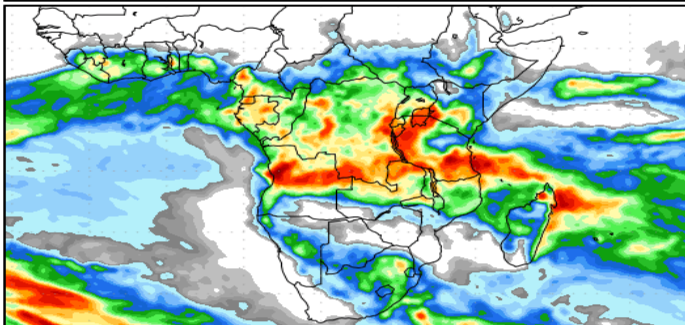
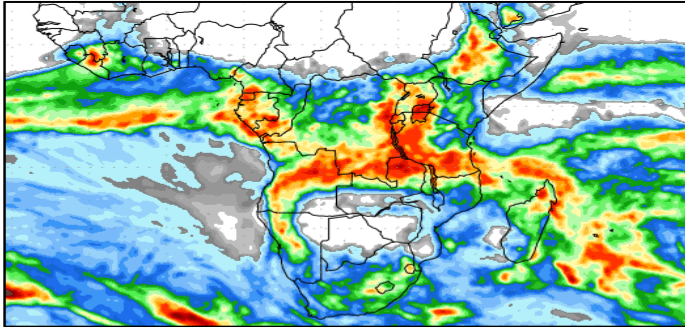
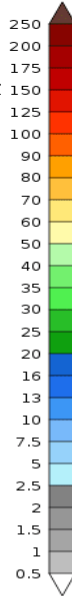


Weather

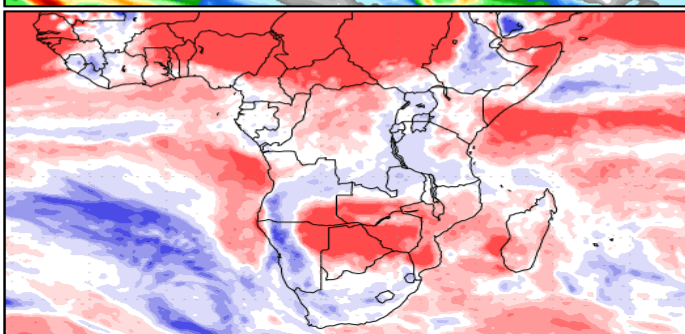
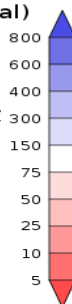
SA Medium-term Precipitation Forecasts

Precipitation Forecasts

Precipitation (mm)
during the period:



Precipitation (% of normal)
during the first period:



Precipitation forecasts from the National Centers for Environmental Prediction.
Normal rainfall derived from Xie-Arkin (CMAP) Monthly Climatology for 1979-2003.
Forecast Initialization Time: 00Z19MAR2025