

Daily market
Report
02 Apr 25



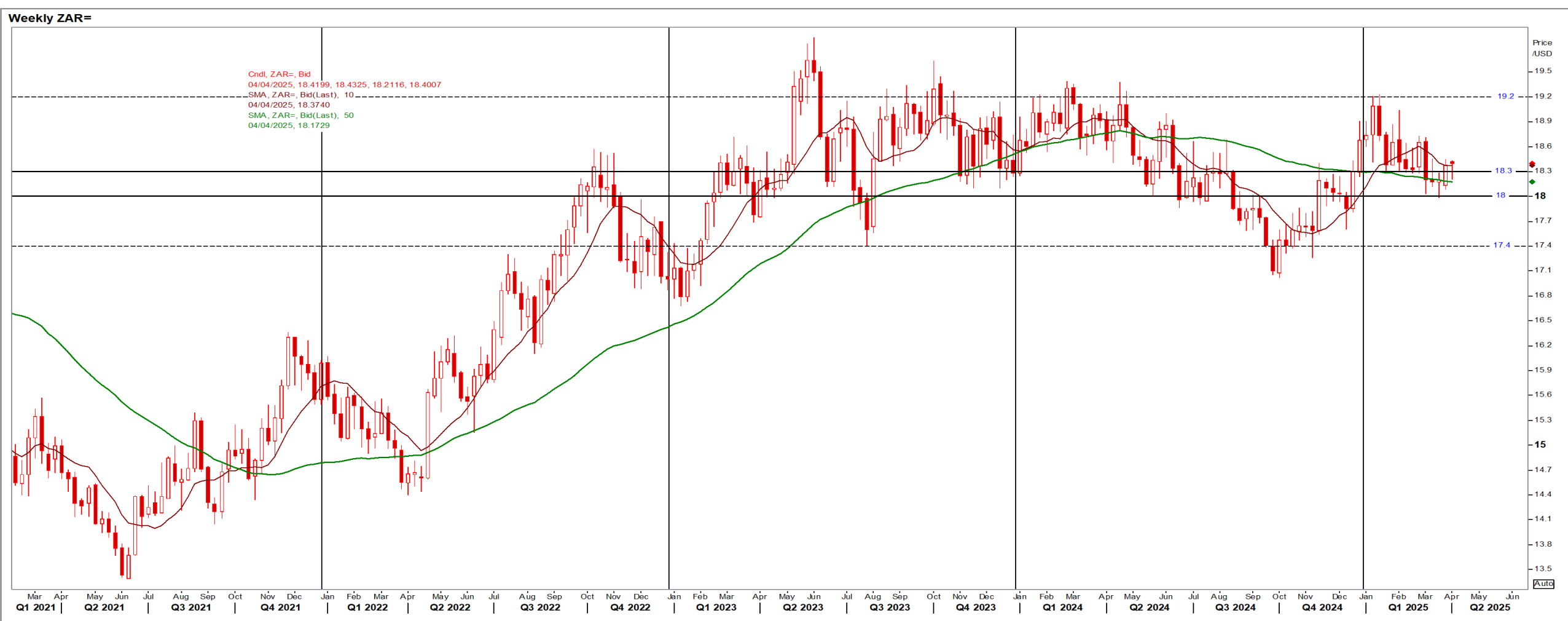
Parity Movements (implied price moves)

USA Movement (Overnight)	Cents	Currencies	02-Apr-25	07:58:06	
CORN CBOT (Jul25)	463.75	-2.00	R/\$ last	R 18.5423	0.2012
SOY CBOT (May25)	1,030.50	13.50	Euro=	\$ 1.0790	-0.0027
W1 CBOT (May25)	538.50	0.00	GOLD	\$ 3,117	-14.8500
W2 KCBT (May25)	565.25	10.25	BRENT	\$ 74.45	-0.50
BlackSea Wheat (Near)	220.00	0.00			
Index Change					
Maize (Jul25)	3,385	R 22.29	Wheat CBOT (May25)	3,669	R 39.81
Soya (May25)	7,020	R 167.15	Wheat Kansas (May25)	3,851	R 110.86
BlackSea Wheat Near	4,079	R 44.26	RAND EFFECT ON WHEAT PARITY	3,781	R 41.03

South African Rand (ZAR)

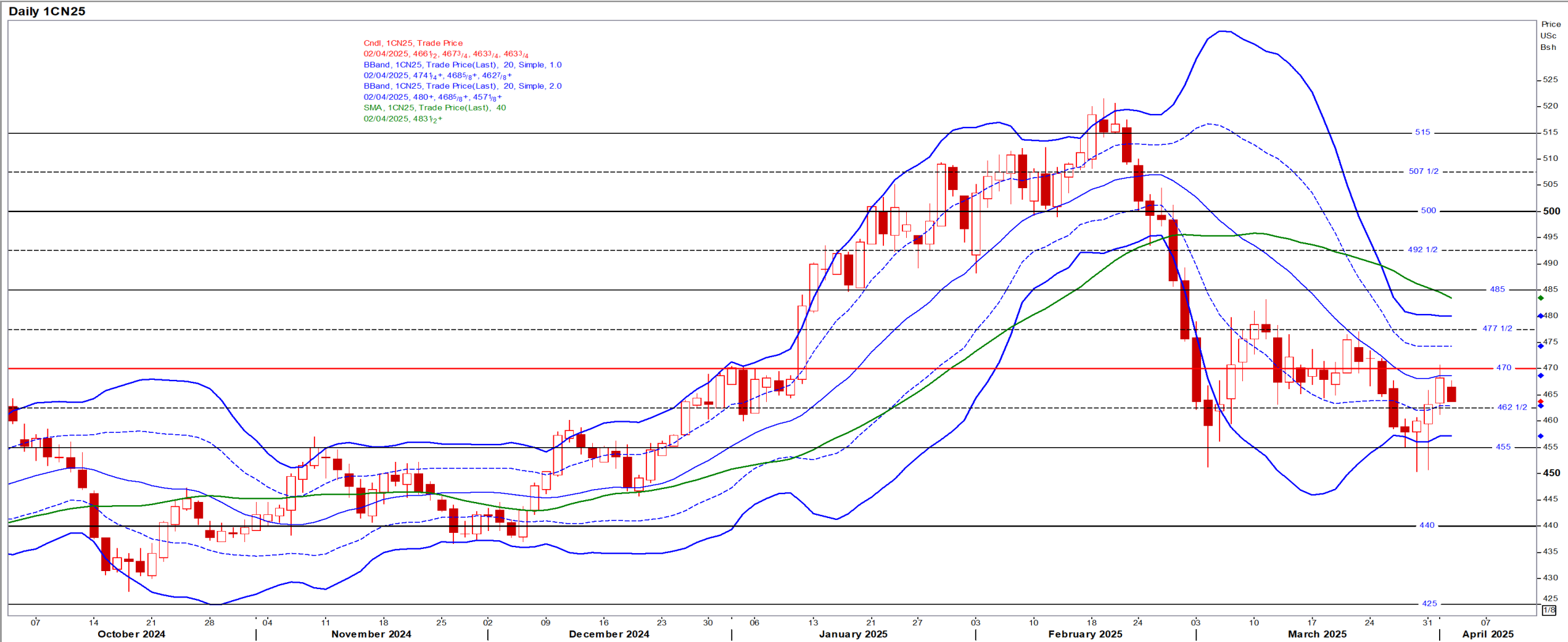
USD/ZAR Weekly: Medium-term ZAR bearish > R18.30

- ZAR weakened as negotiations in the GNU over the deadlocked budget dragged on hours before a parliamentary committee was to debate it – Reuters



USA Corn

Jul25 Daily: Contract status bearish < \$4.70

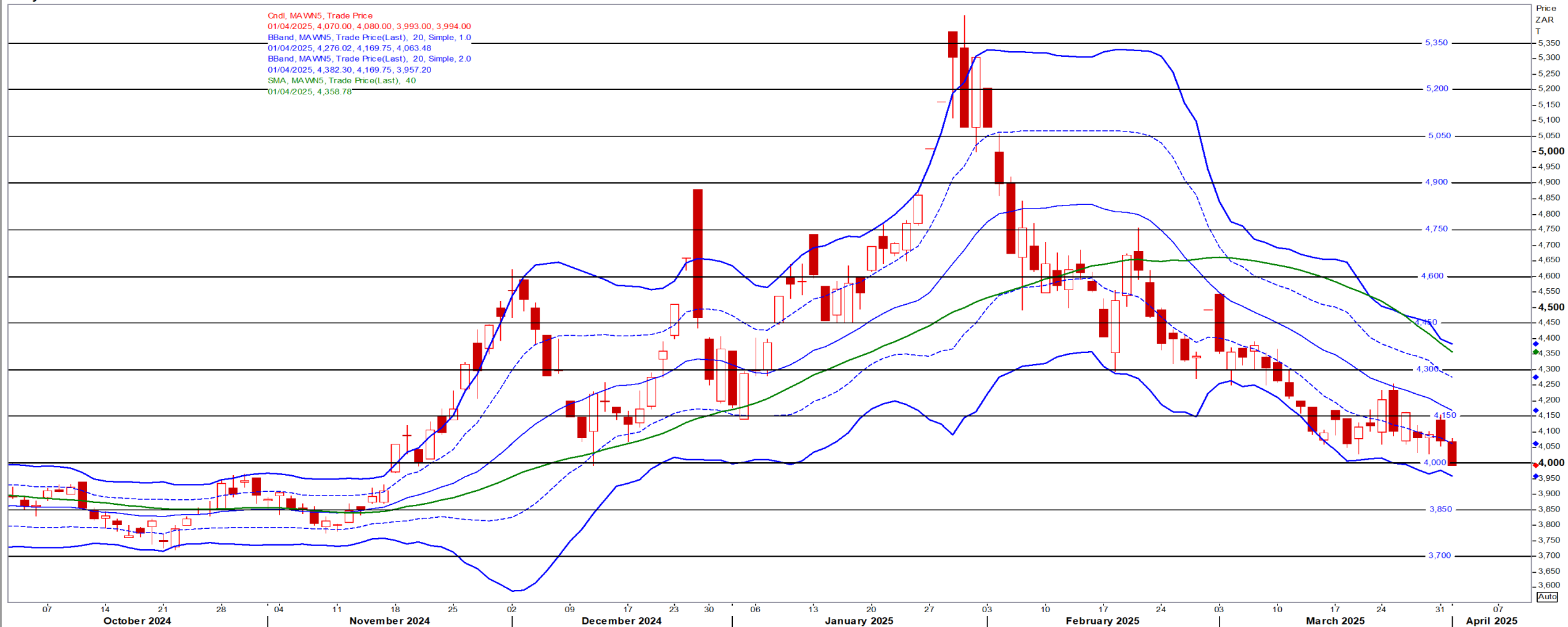


White Maize

Jul25 Daily: Contract status bearish < R4600

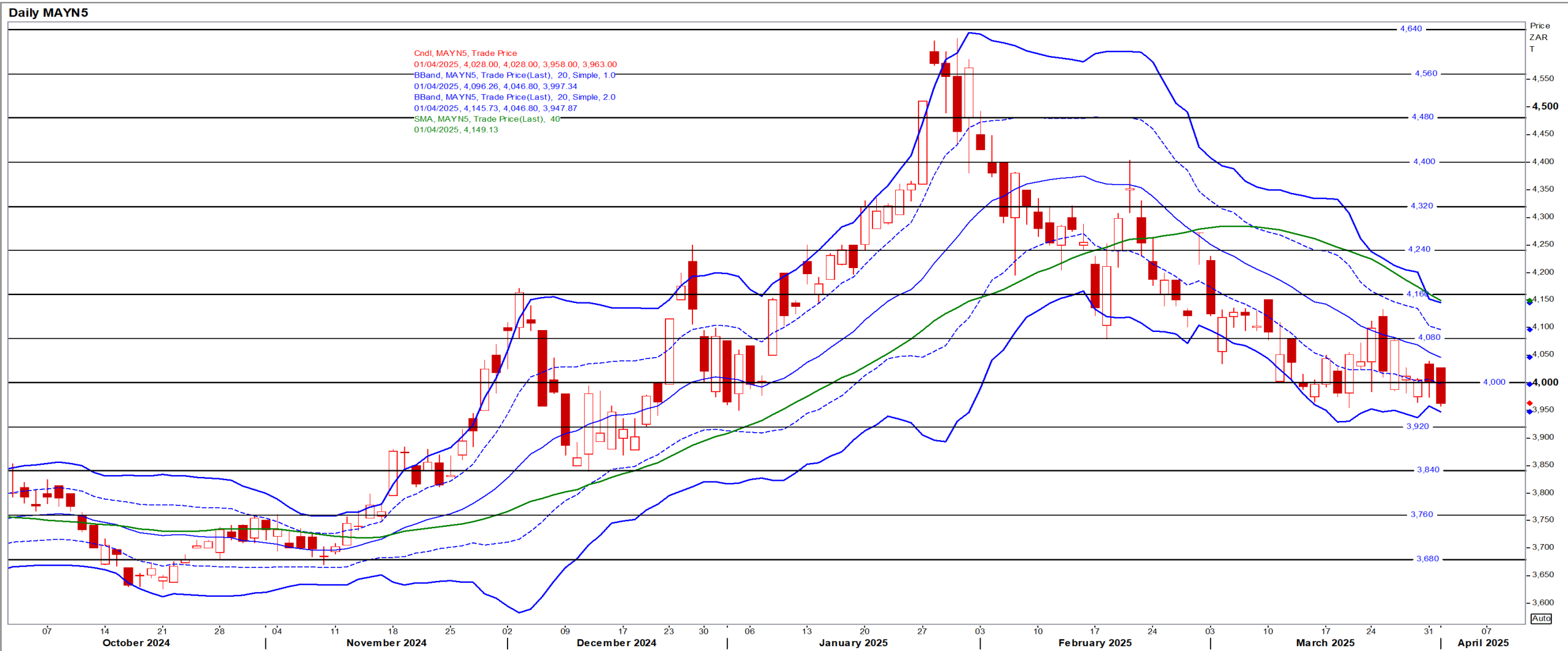
Daily MAWN5

CndL, MAWN5, Trade Price
01/04/2025, 4,070.00, 4,080.00, 3,993.00, 3,994.00
BBand, MAWN5, Trade Price(Last), 20, Simple, 1.0
01/04/2025, 4,276.02, 4,169.75, 4,063.48
BBand, MAWN5, Trade Price(Last), 20, Simple, 2.0
01/04/2025, 4,382.30, 4,169.75, 3,957.20
SMA, MAWN5, Trade Price(Last), 40
01/04/2025, 4,358.78



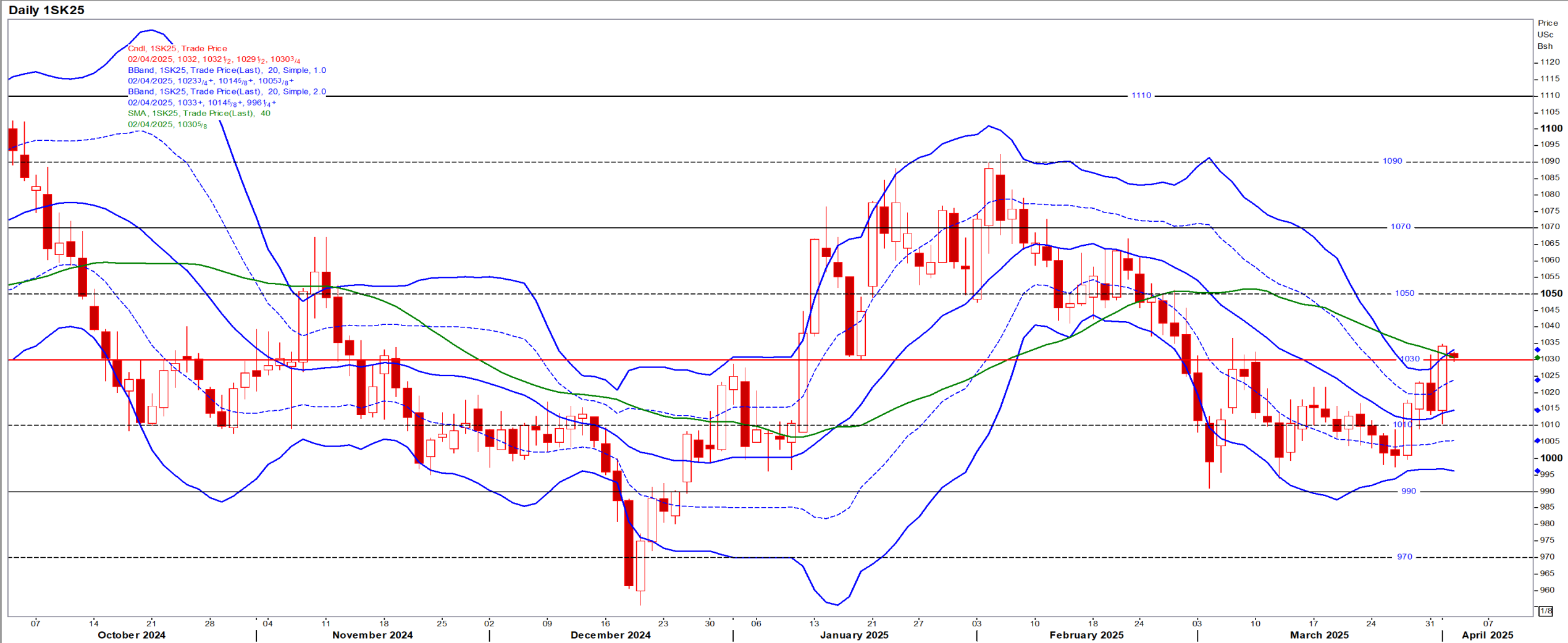
Yellow Maize

Jul25 Daily: Contract status bearish < R4160



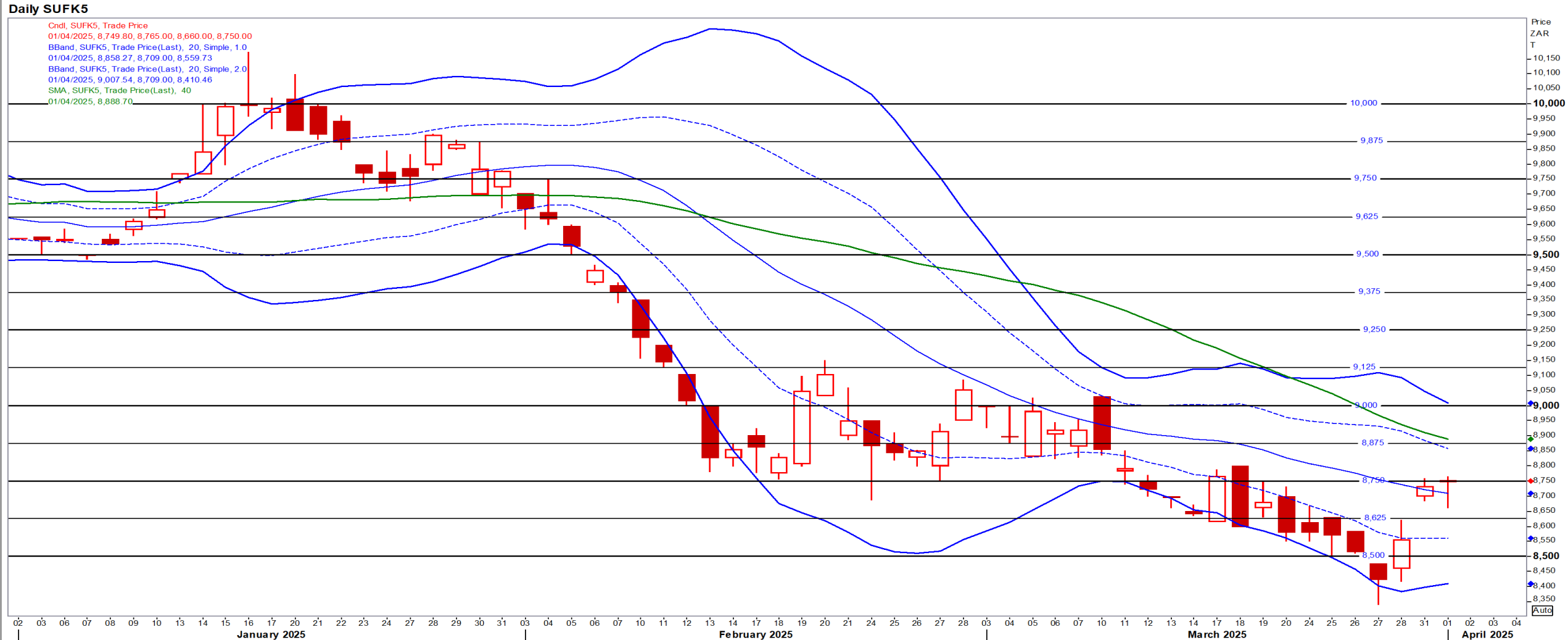
USA Soya

May25 Daily: Contract status bullish > \$10.30



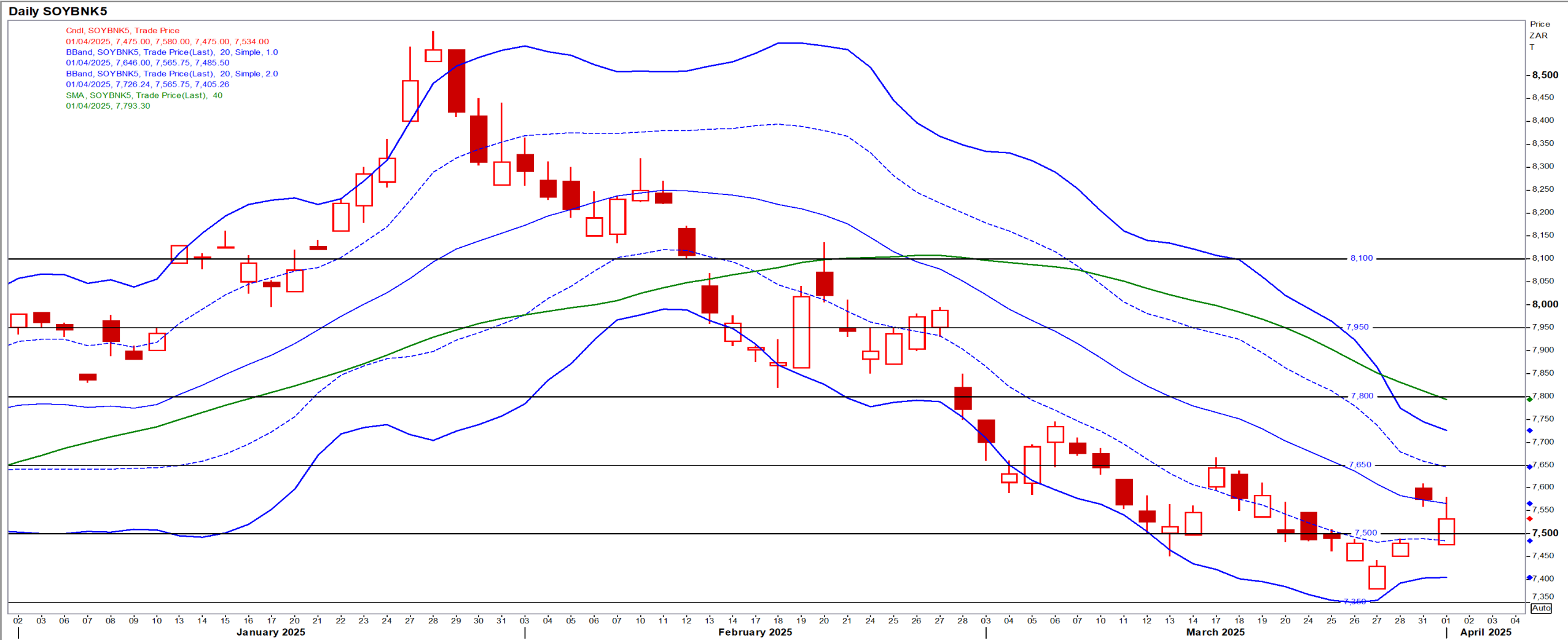
Suns

May25 Daily: Contract status very bearish < R9000



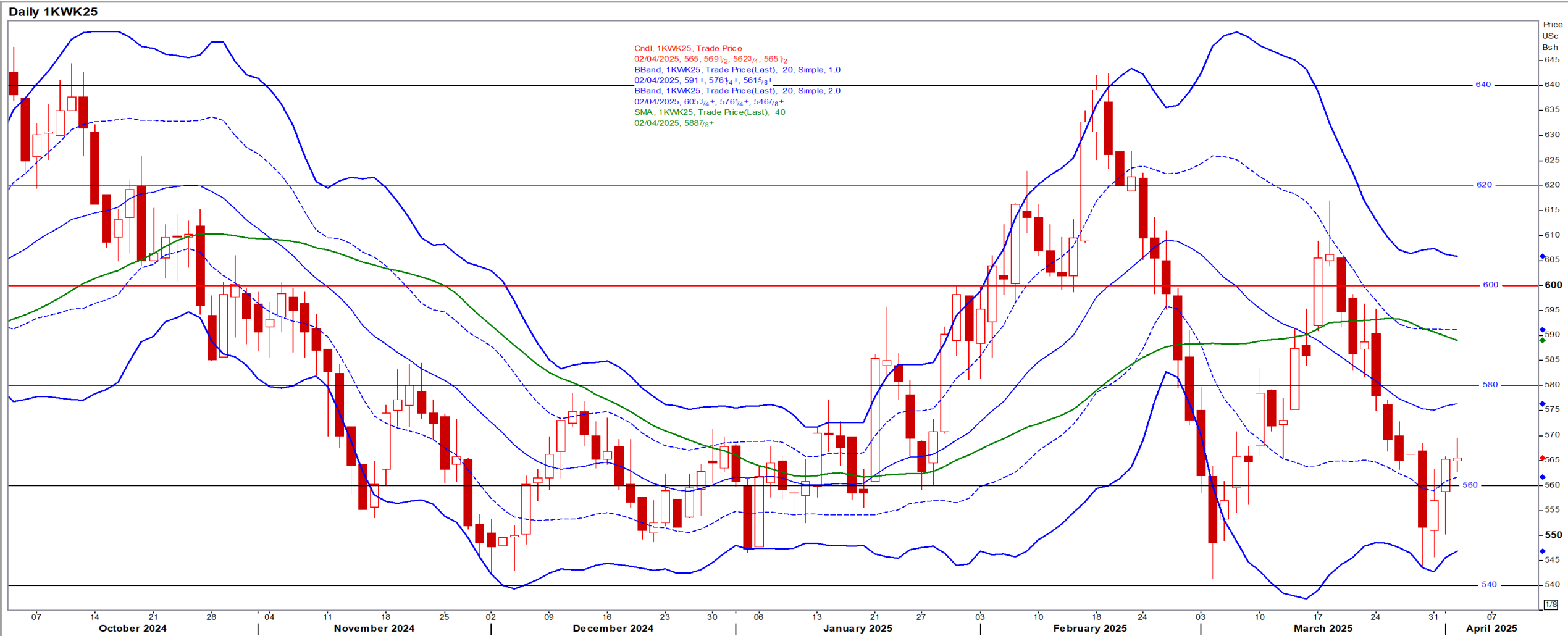
SA Soya

May25 Daily: Contract status very bearish < R7800



US KANSAS Wheat

May25 Daily: Contract bearish < \$6.00



SA Wheat

May25 Daily: Contract status bearish < R6160

