

Daily market  
Report  
03 Apr 25



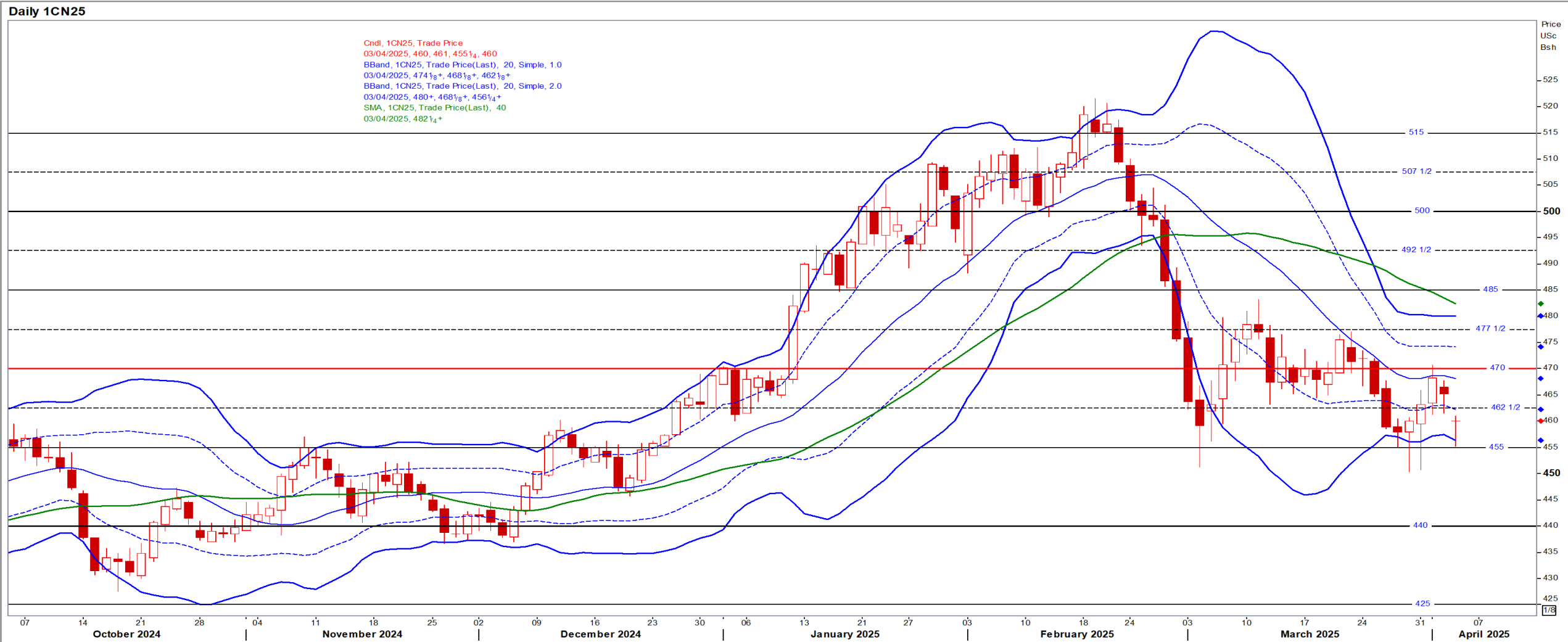
# Parity Movements (implied price moves)

USA Movement (Overnight)		Cents	Currencies	03-Apr-25	07:57:44
CORN CBOT (Jul25)	460.00	-1.75	R/\$ last	R 18.9651	0.3580
SOY CBOT (May25)	1,015.00	-13.00	Euro=	\$ 1.0944	0.0138
W1 CBOT (May25)	532.75	-2.75	GOLD	\$ 3,132	0.6100
W2 KCBT (May25)	562.00	0.75	BRENT	\$ 73.14	-1.26
BlackSea Wheat (Near)	220.00	0.00			
<b>Index Change</b>					
Maize (Jul25)	3,434	R 52.01	Wheat CBOT (May25)	3,712	R 51.28
Soya (May25)	7,072	R 44.63	Wheat Kansas (May25)	3,916	R 79.05
BlackSea Wheat Near	4,172	R 78.76	RAND EFFECT ON WHEAT PARITY	3,911	R 73.83



# USA Corn

Jul25 Daily: Contract status bearish < \$4.70

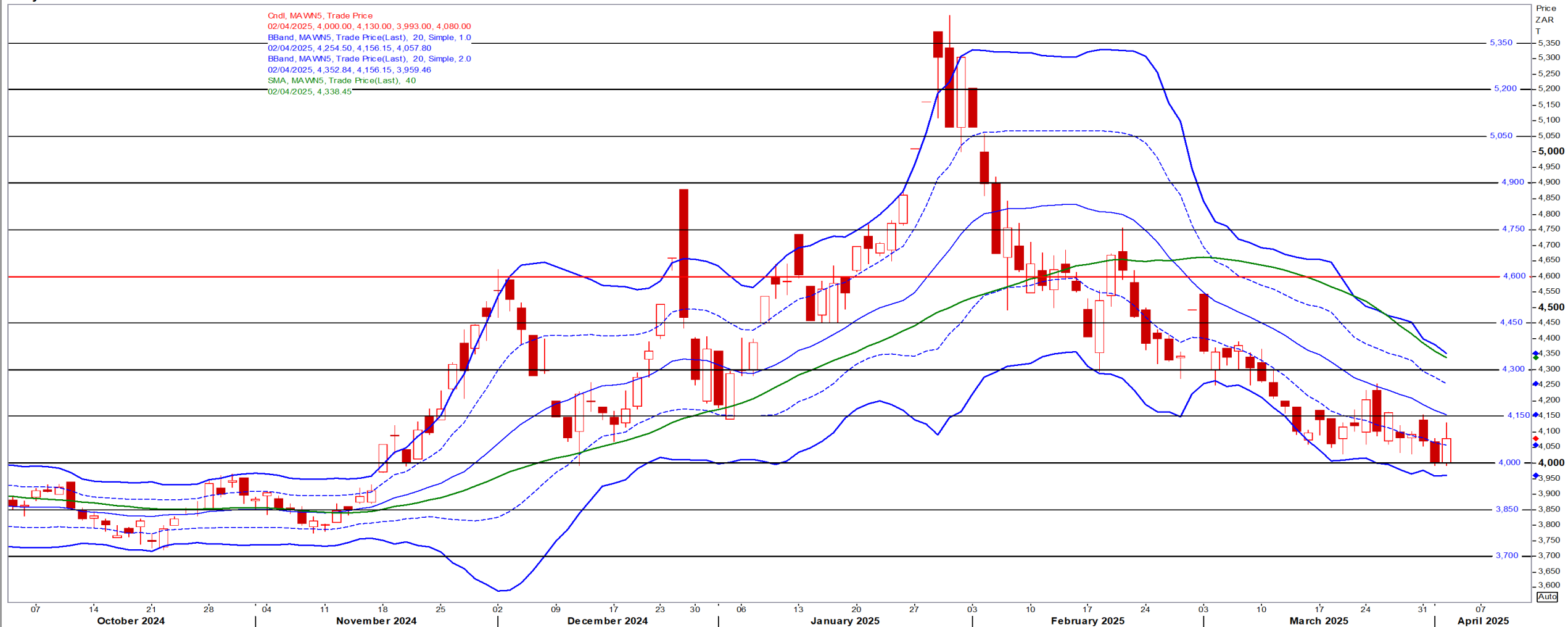


# White Maize

Jul25 Daily: Contract status bearish < R4600

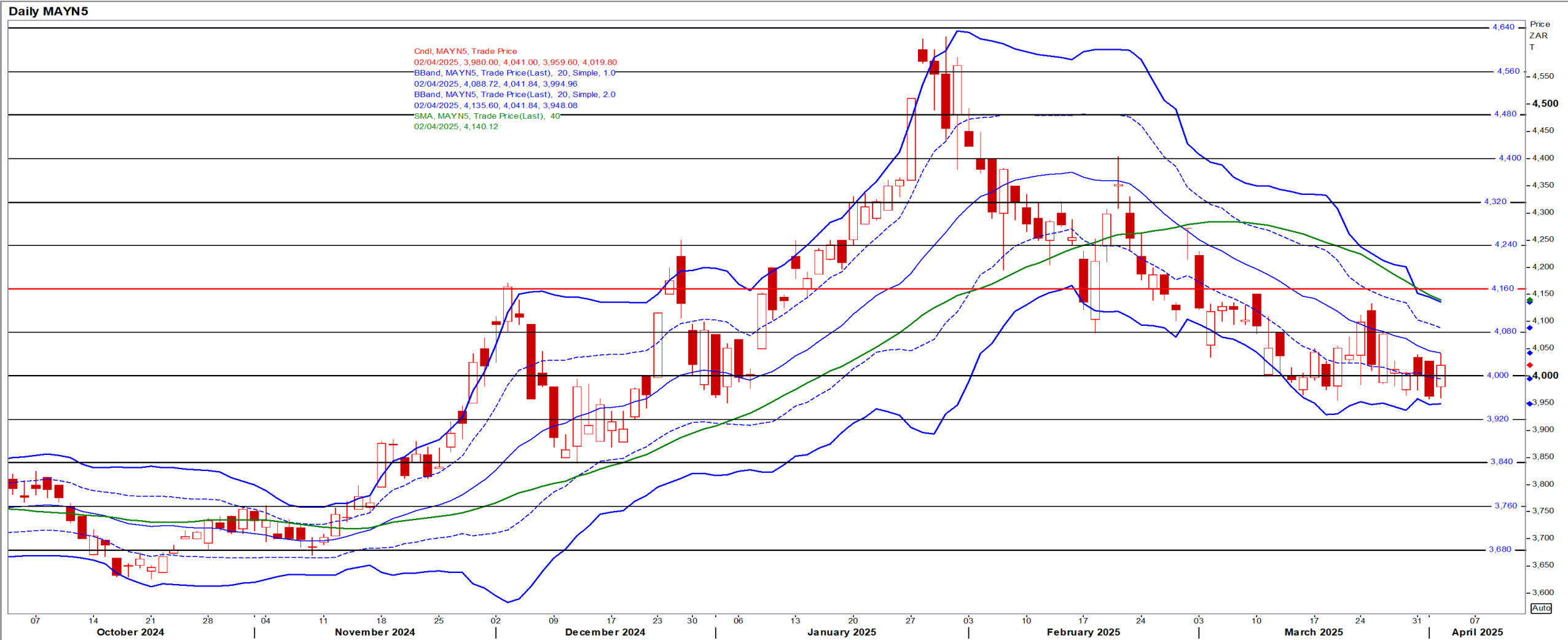
Daily MAWN5

CndL, MAWN5, Trade Price  
02/04/2025, 4,000.00, 4,130.00, 3,993.00, 4,080.00  
BBand, MAWN5, Trade Price(Last), 20, Simple, 1.0  
02/04/2025, 4,254.50, 4,156.15, 4,057.80  
BBand, MAWN5, Trade Price(Last), 20, Simple, 2.0  
02/04/2025, 4,352.84, 4,156.15, 3,959.46  
SMA, MAWN5, Trade Price(Last), 40  
02/04/2025, 4,338.45



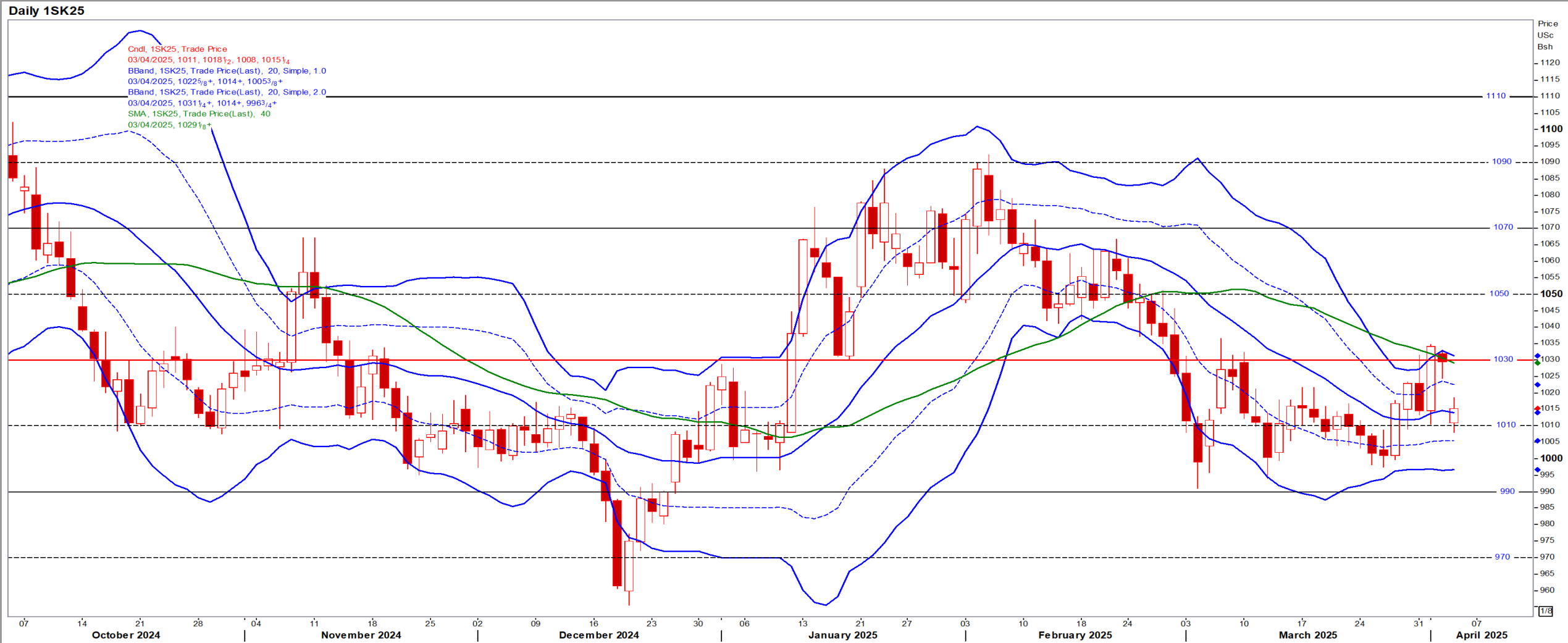
# Yellow Maize

Jul25 Daily: Contract status bearish < R4160



# USA Soya

May25 Daily: Contract status bearish < \$10.30



# Suns

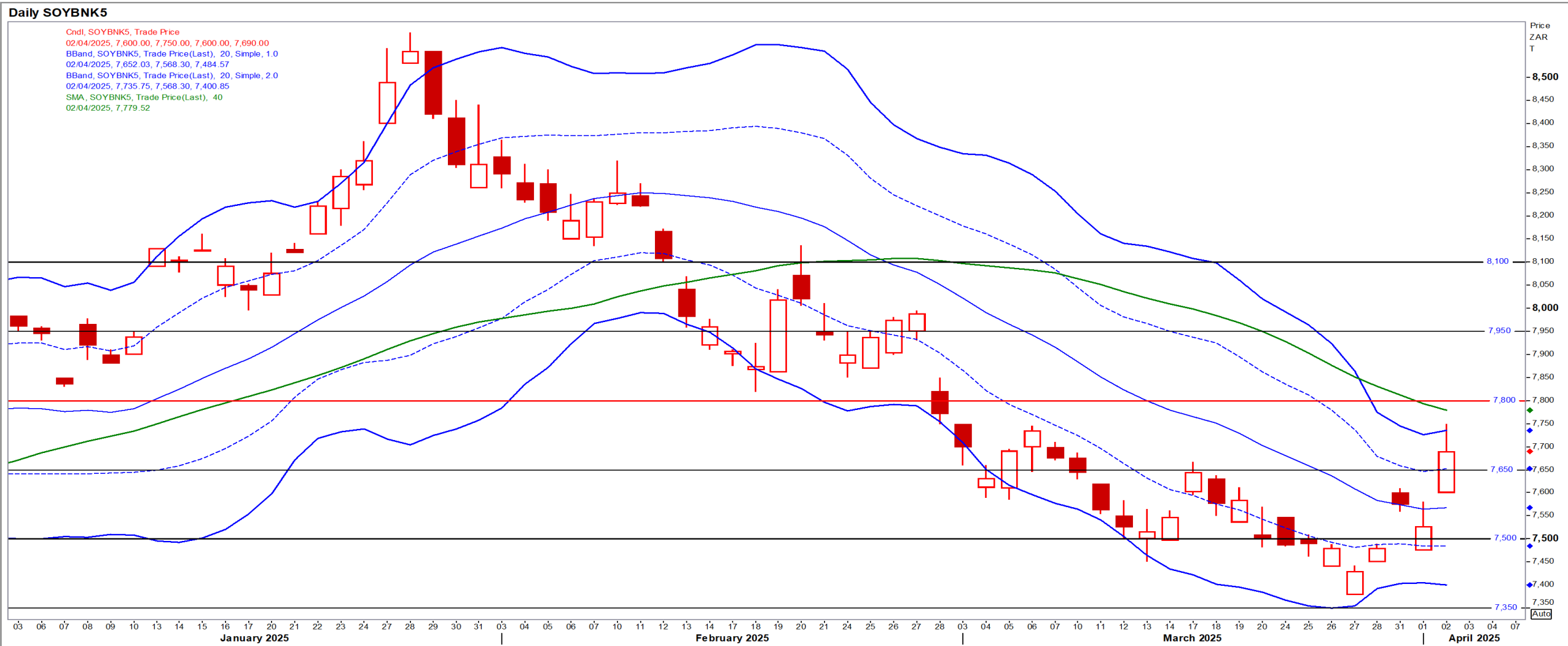
May25 Daily: Contract status very bearish < R9000





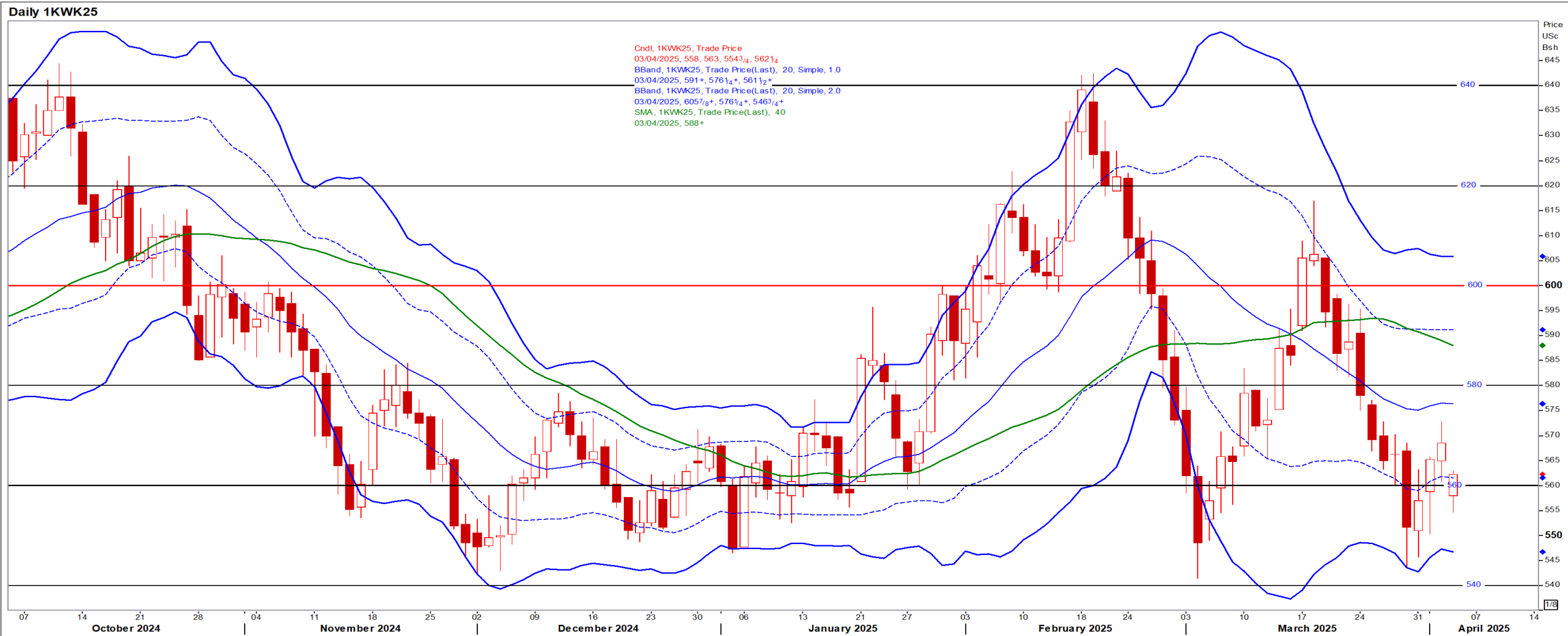
# SA Soya

May25 Daily: Contract status very bearish < R7800



# US KANSAS Wheat

May25 Daily: Contract bearish < \$6.00



# SA Wheat

May25 Daily: Contract status bullish > R6160

