

Daily market
Report
07 Apr 25



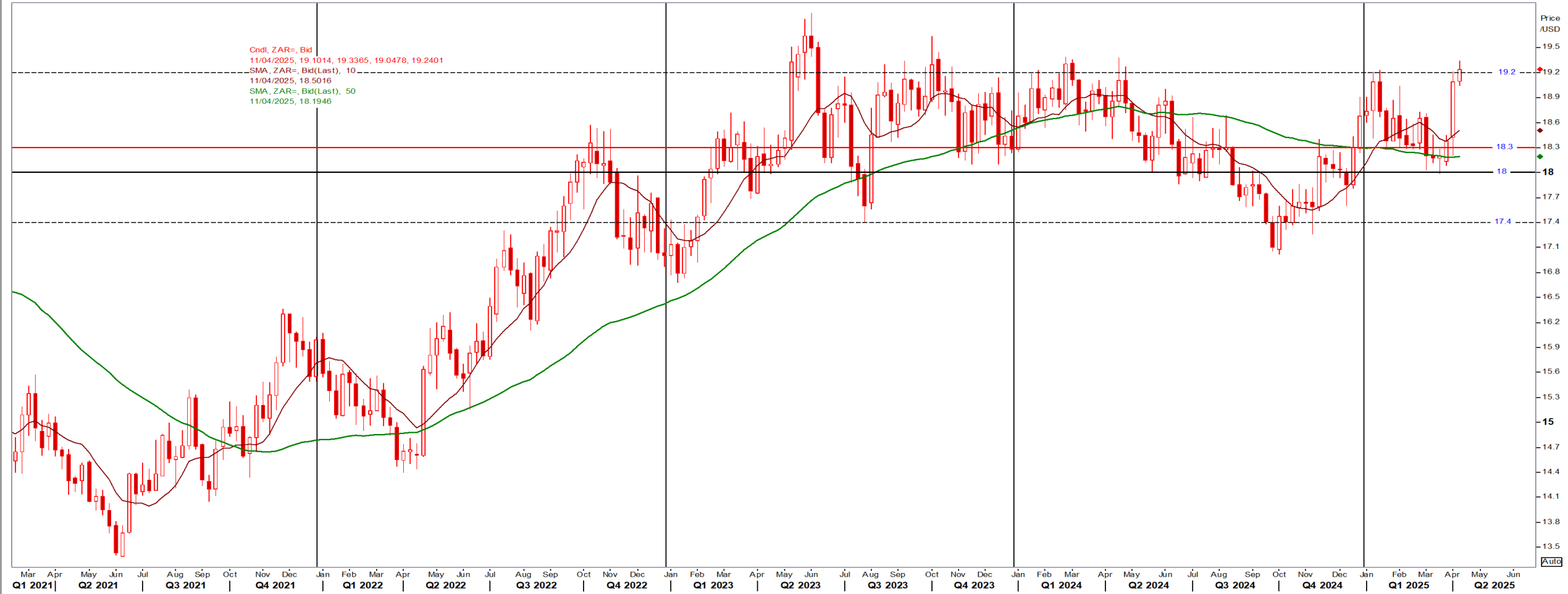
Parity Movements (implied price moves)

USA Movement (Overnight)		Cents	Currencies	07-Apr-25	07:57:39
CORN CBOT (Jul25)	468.00	1.00	R/\$ last	R 19.2230	0.2478
SOY CBOT (May25)	981.25	-26.75	Euro=	\$ 1.1011	0.0026
W1 CBOT (May25)	534.50	-0.25	GOLD	\$ 3,034	-56.9000
W2 KCBT (May25)	567.50	0.75	BRENT	\$ 63.79	-3.96
BlackSea Wheat (Near)	224.00	0.00			
Index Change					
Maize (Jul25)	3,542	R 53.13	Wheat CBOT (May25)	3,775	R 46.92
Soya (May25)	6,930	R -97.15	Wheat Kansas (May25)	4,008	R 56.90
BlackSea Wheat Near	4,306	R 55.51	RAND EFFECT ON WHEAT PARITY	4,003	R 51.60

USD/ZAR Weekly: Medium-term ZAR very bearish > R19.20

- Risky currencies like the ZAR dumped and safe assets (bonds/gold) sought in fear of a global trade war leading to global economic slowdown – Reuters

Weekly ZAR=

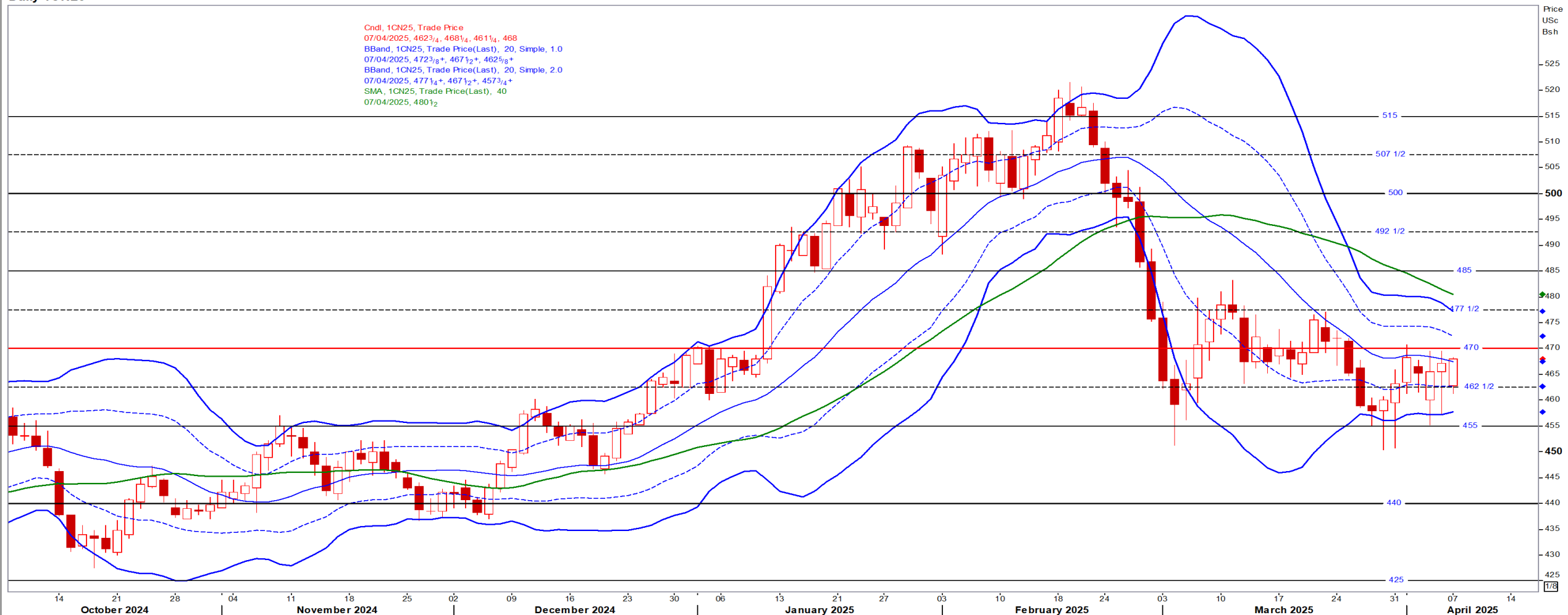


USA Corn

Jul25 Daily: Contract status bearish < \$4.70

Daily 1CN25

Cndl, 1CN25, Trade Price
07/04/2025, 462 3/4, 468 1/4, 461 1/4, 468
BBand, 1CN25, Trade Price(Last), 20, Simple, 1.0
07/04/2025, 472 3/8+, 467 1/2+, 462 5/8+
BBand, 1CN25, Trade Price(Last), 20, Simple, 2.0
07/04/2025, 477 1/4+, 467 1/2+, 457 3/4+
SMA, 1CN25, Trade Price(Last), 40
07/04/2025, 480 1/2

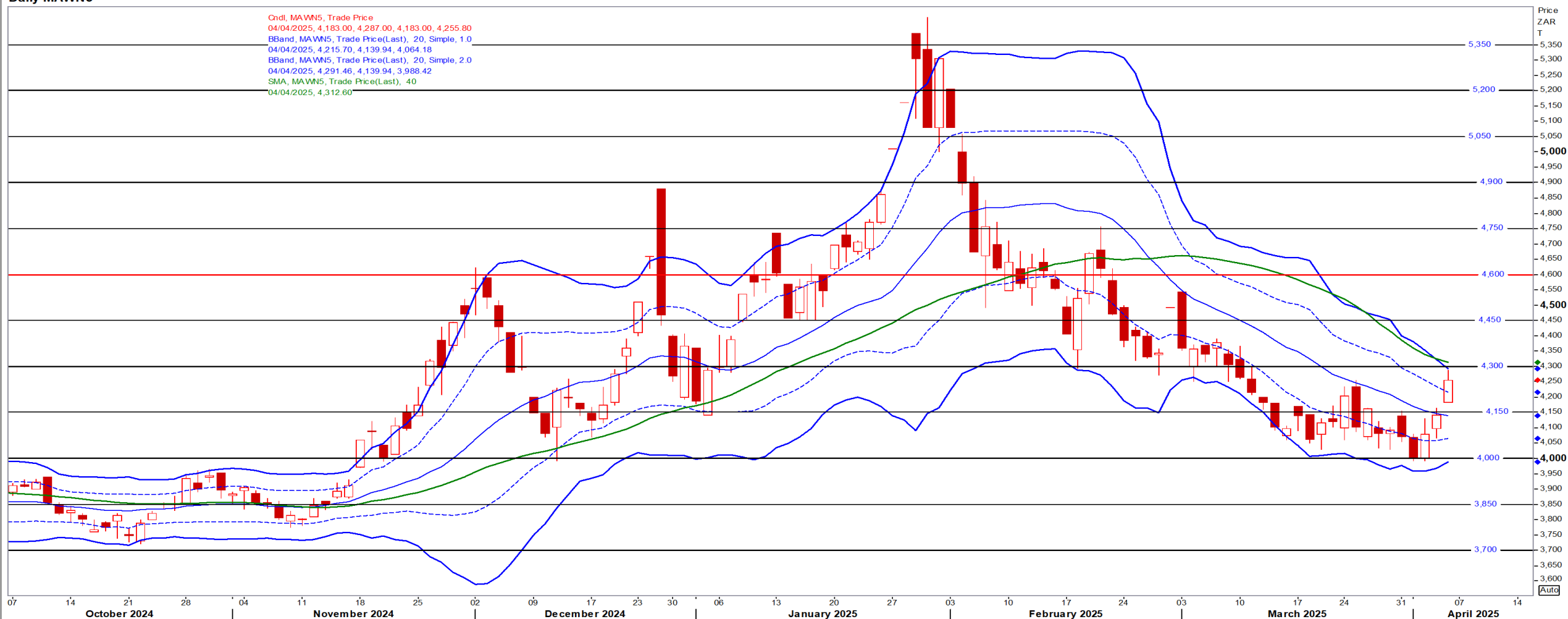


White Maize

Jul25 Daily: Contract status bearish < R4600

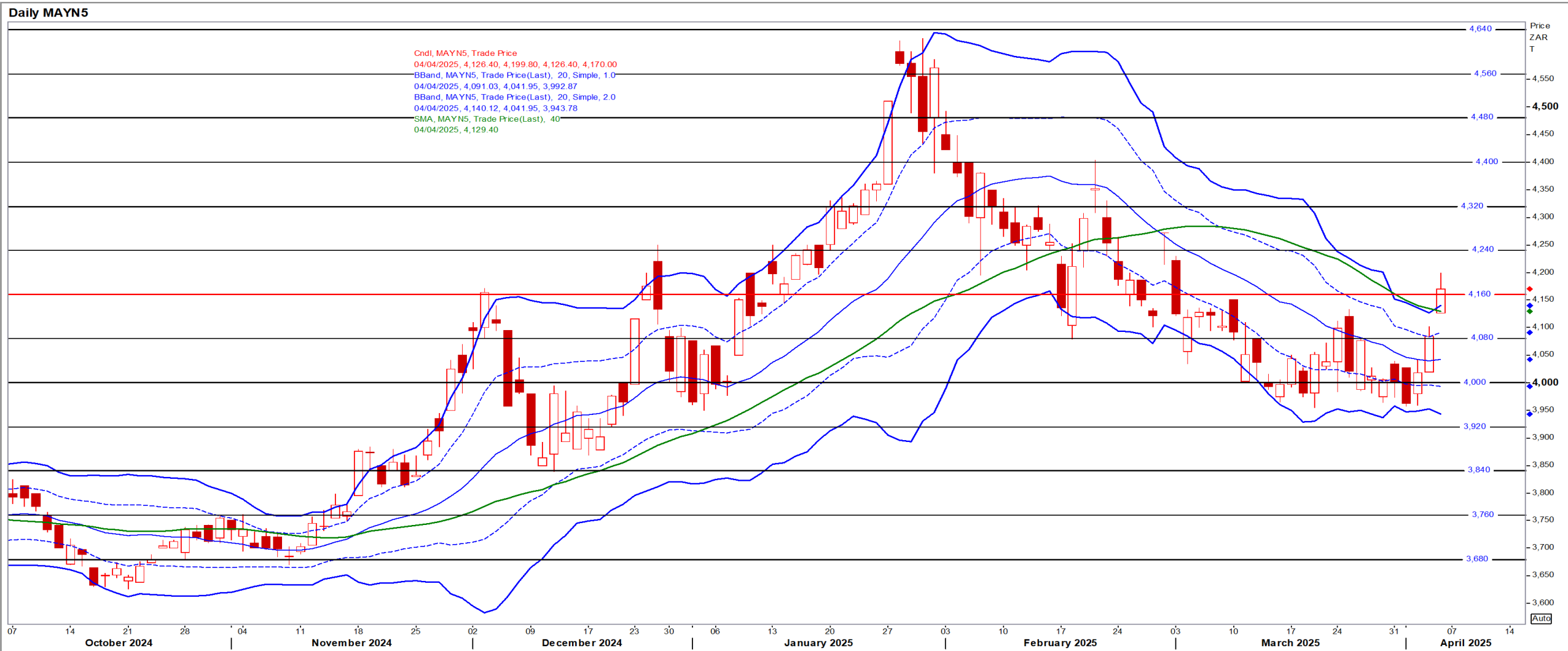
Daily MAWN5

Onl, MAWN5, Trade Price
04/04/2025, 4,183.00, 4,287.00, 4,183.00, 4,255.80
BBand, MAWN5, Trade Price(Last), 20, Simple, 1.0
04/04/2025, 4,215.70, 4,139.94, 4,064.18
BBand, MAWN5, Trade Price(Last), 20, Simple, 2.0
04/04/2025, 4,291.46, 4,139.94, 3,988.42
SMA, MAWN5, Trade Price(Last), 40
04/04/2025, 4,312.60



Yellow Maize

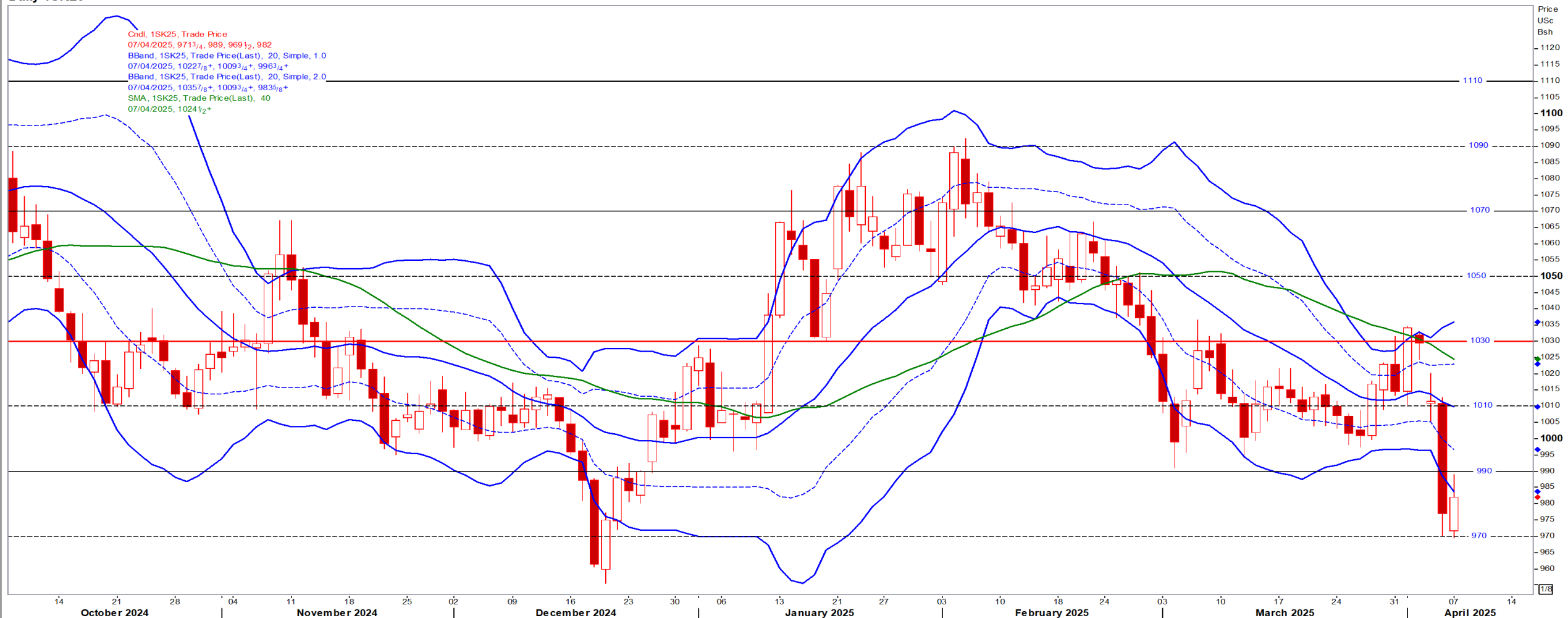
Jul25 Daily: Contract status bullish > R4160



USA Soya

May25 Daily: Contract status bearish < \$10.30

Daily 1SK25



Suns

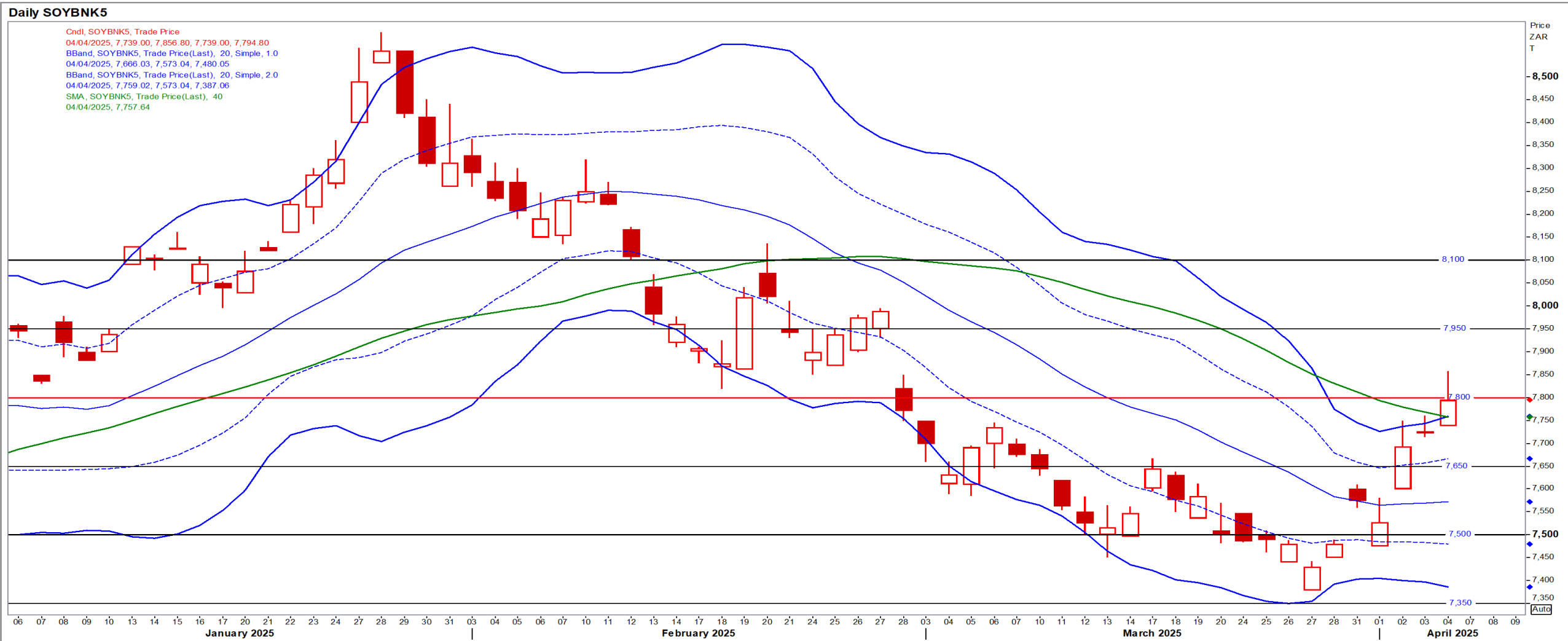
May25 Daily: Contract status very bearish < R9000

Daily SUFK5



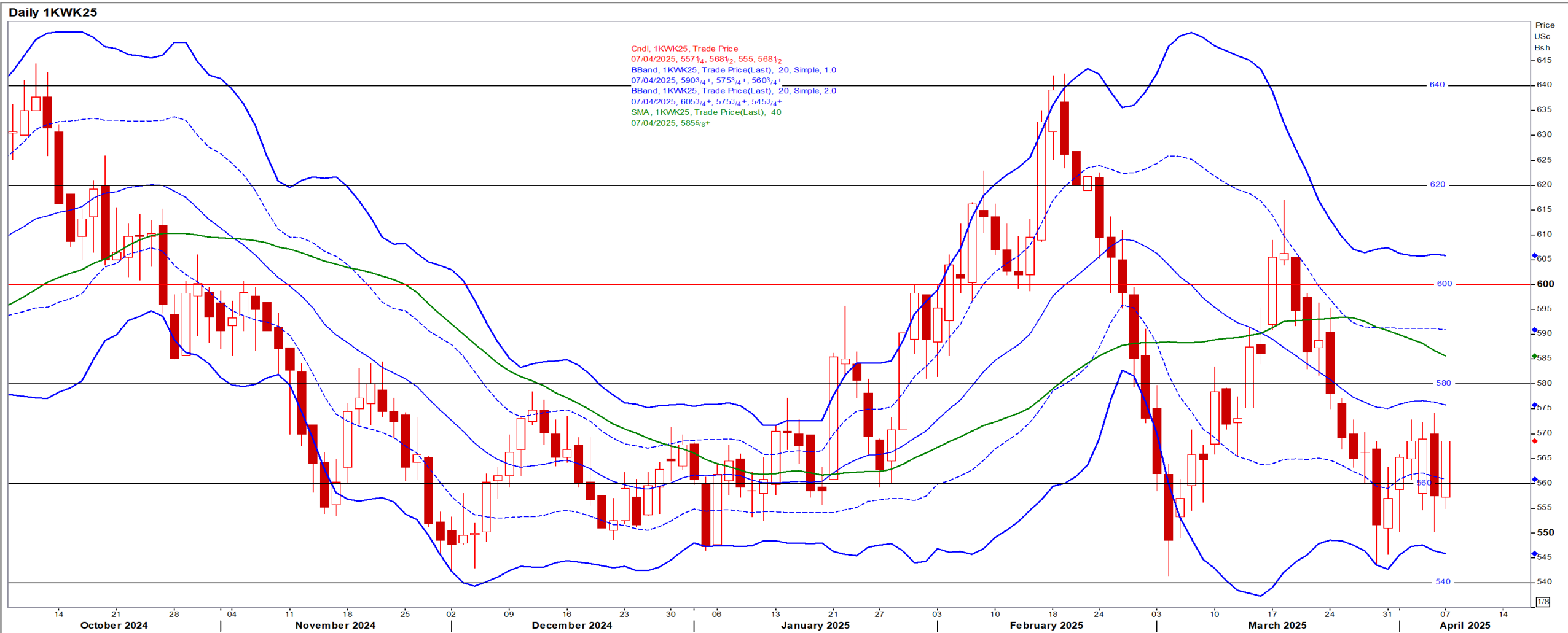
SA Soya

May25 Daily: Contract status bearish < R7800



US KANSAS Wheat

May25 Daily: Contract bearish < \$6.00



SA Wheat

May25 Daily: Contract status bullish > R6160

