

Daily market
Report
14 Apr 25

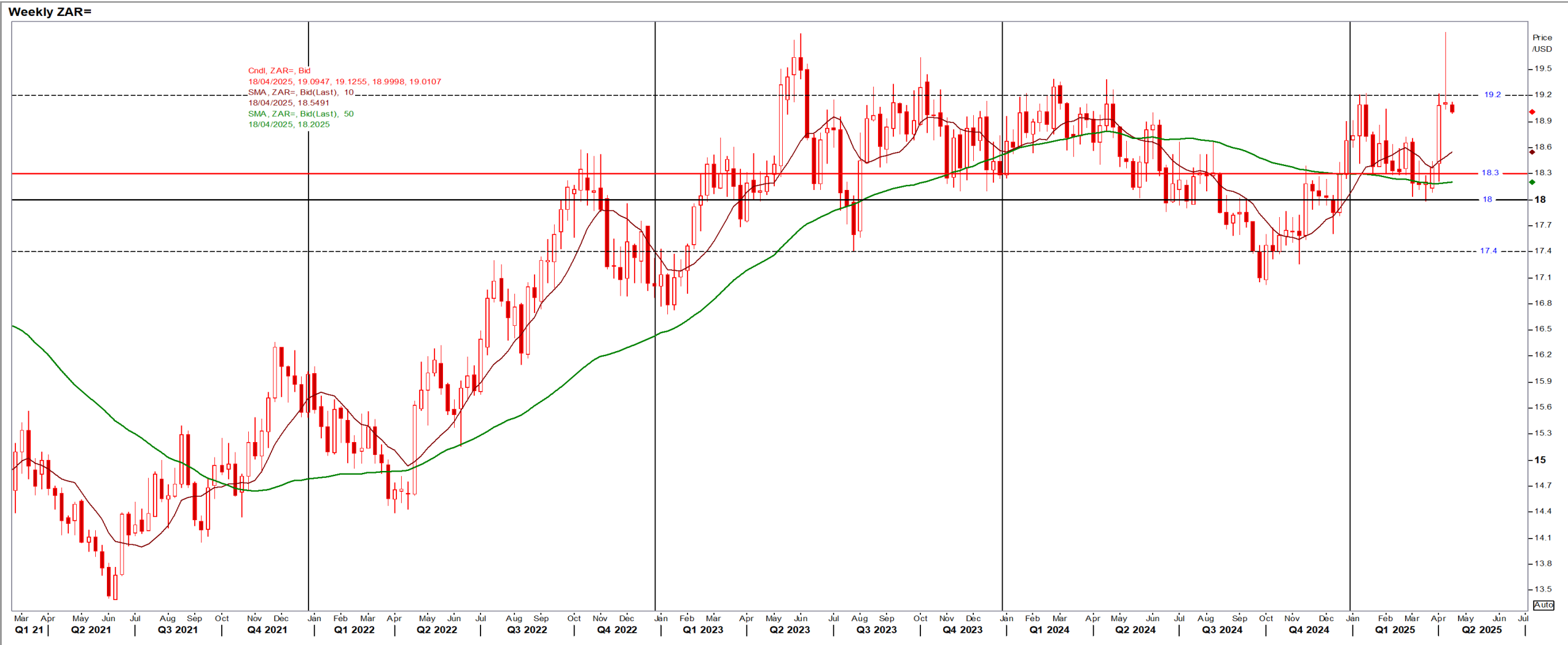


Parity Movements (implied price moves)

USA Movement (Overnight)		Cents	Currencies	14-Apr-25	08:07:44
CORN CBOT (Jul25)	494.00	3.00	R/\$ last	R 18.9933	-0.2507
SOY CBOT (May25)	1,039.25	7.45	Euro=	\$ 1.1393	0.0348
W1 CBOT (May25)	549.00	-16.50	GOLD	\$ 3,232	187.3042
W2 KCBT (May25)	556.25	-9.25	BRENT	\$ 64.88	4.50
BlackSea Wheat (Near)	224.00	-2.00			
Index Change					
Maize (Jul25)	3,694	R 22.43	Wheat CBOT (May25)	3,831	R -115.15
Soya (May25)	7,252	R 51.99	Wheat Kansas (May25)	3,882	R -64.55

South African Rand (ZAR)

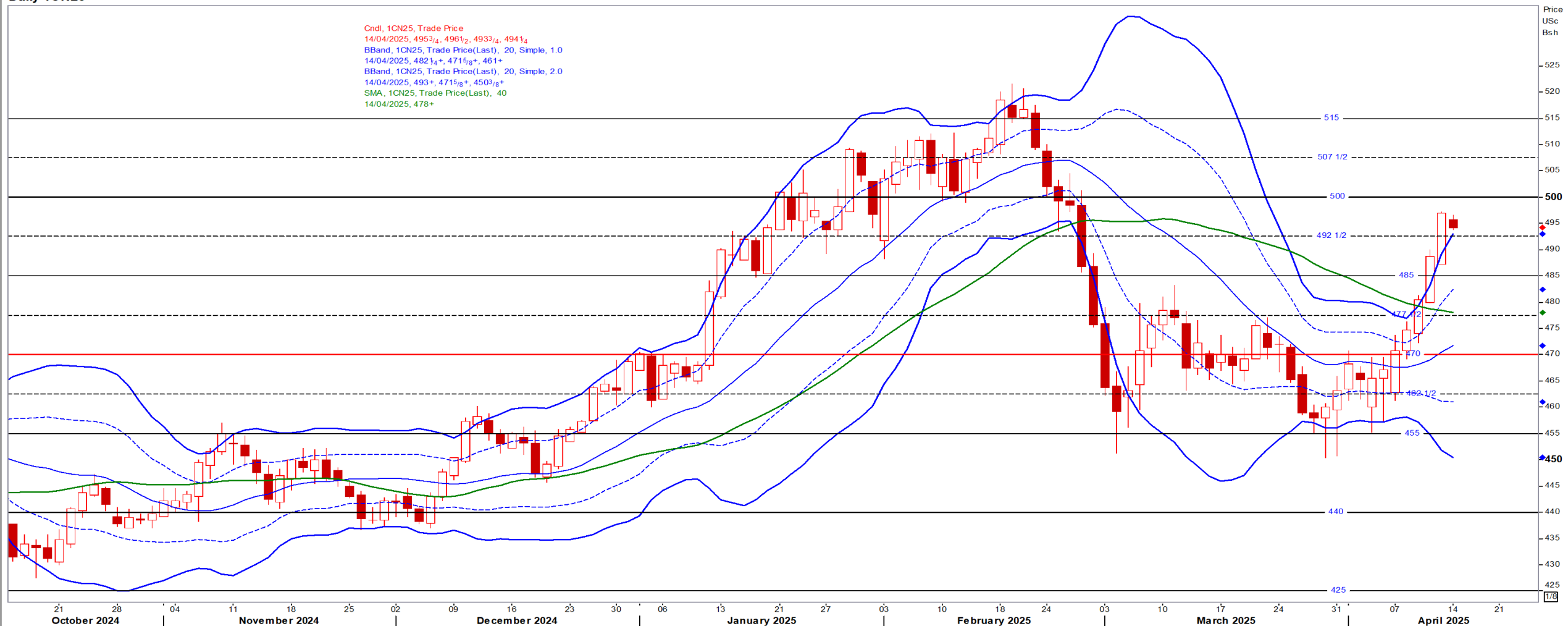
USD/ZAR Weekly: Medium-term ZAR very bearish > R18.30



USA Corn

Jul25 Daily: Contract status bullish > \$4.70

Daily 1CN25



White Maize

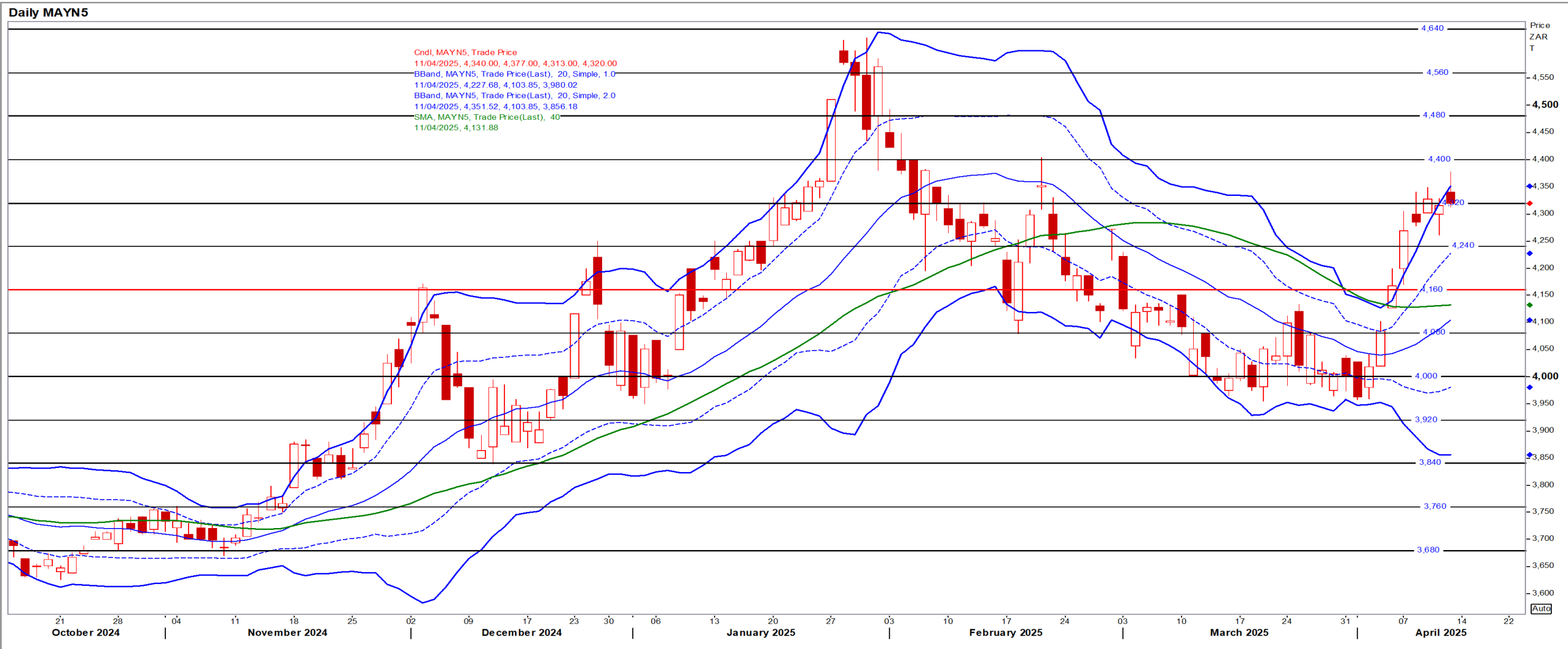
Jul25 Daily: Contract status bearish < R4600

Daily MAWN5



Yellow Maize

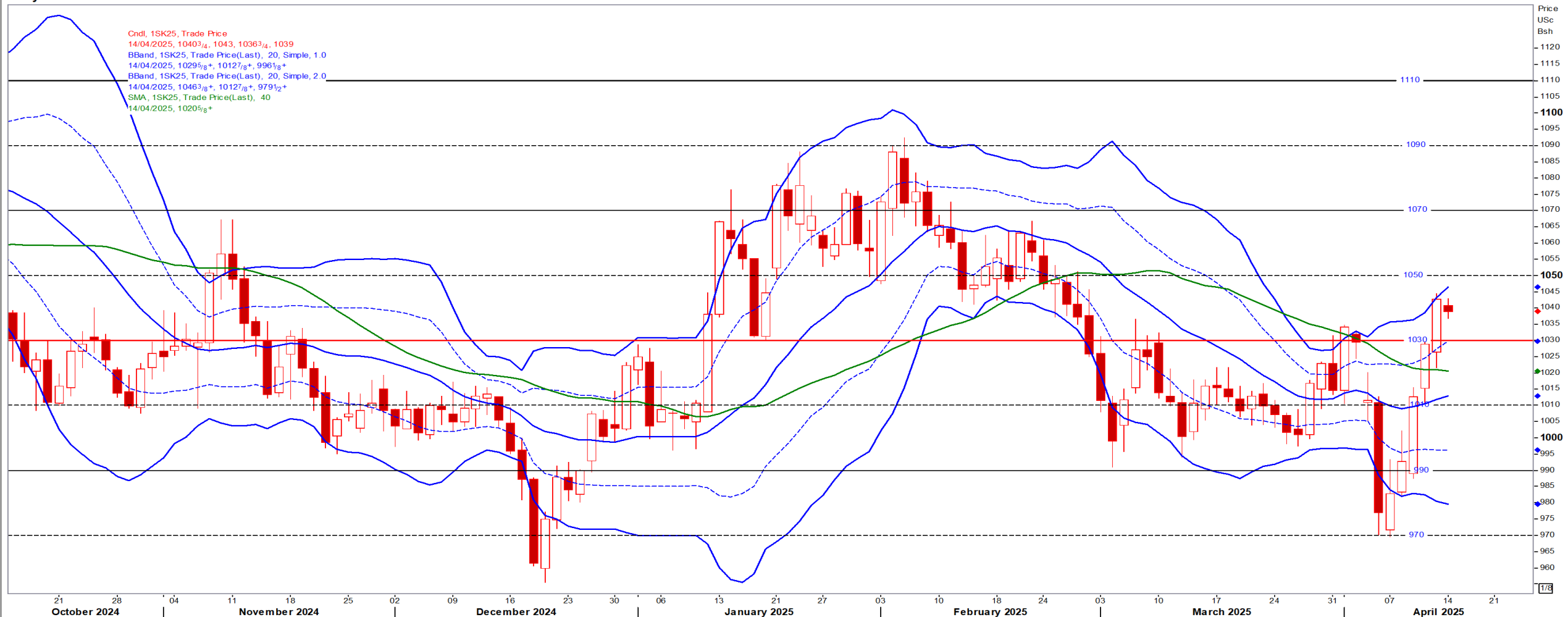
Jul25 Daily: Contract status bullish > R4160



USA Soya

May25 Daily: Contract status bullish > \$10.30

Daily 1SK25



Suns

May25 Daily: Contract status very bullish > R9000



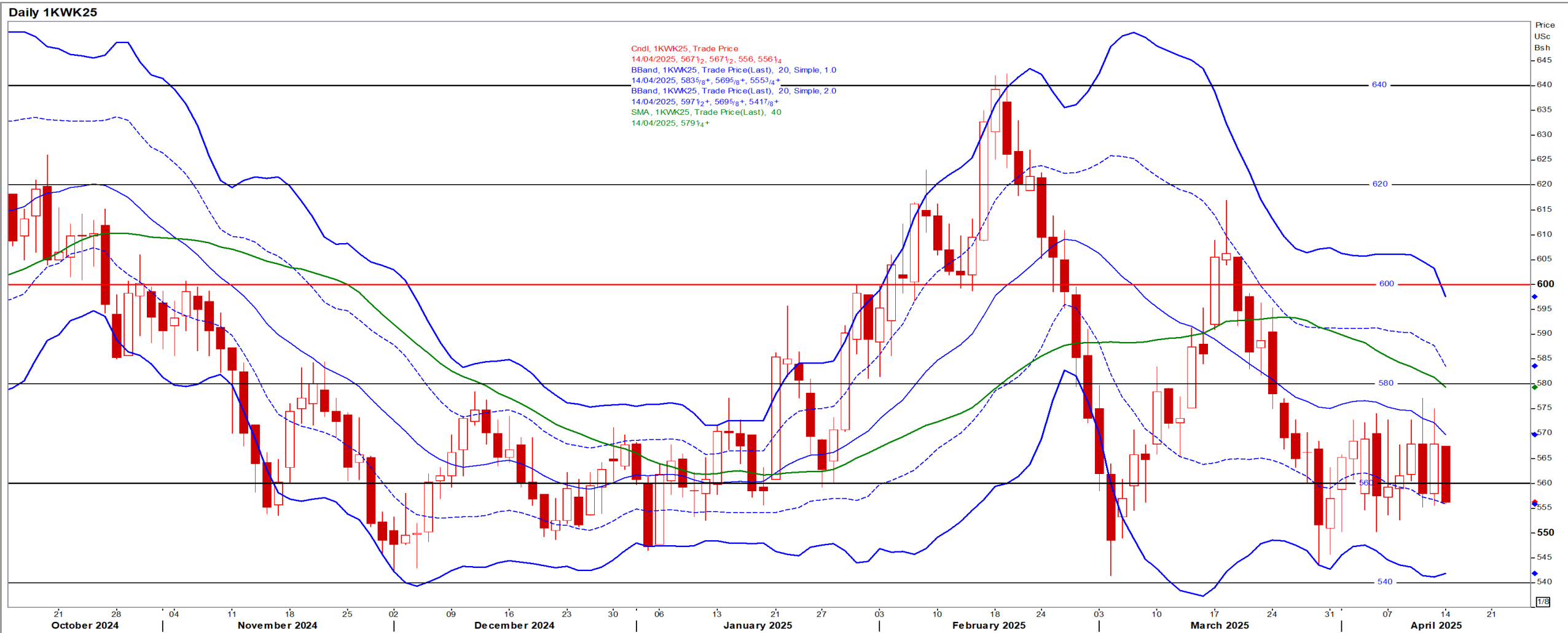
SA Soya

May25 Daily: Contract status bullish > R7800



US KANSAS Wheat

May25 Daily: Contract bearish < \$6.00



SA Wheat

May25 Daily: Contract status bullish > R6160

